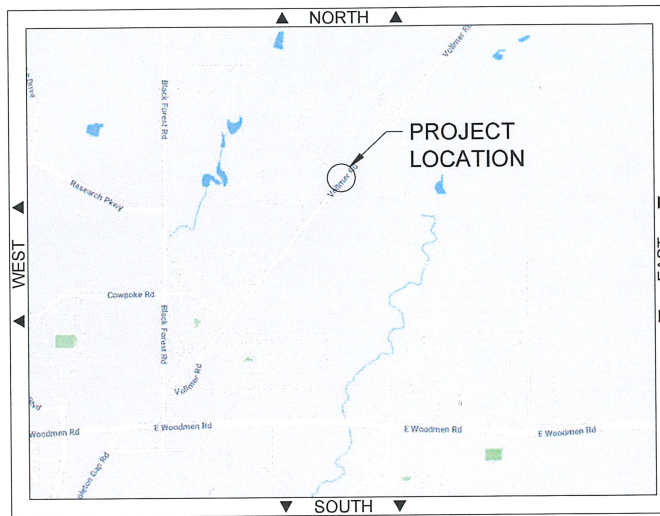


Please reference the attached document for required items on a site development plan.



COLORADO SPRINGS UTILITIES

CONSTRUCTION PLANS FOR IMPROVEMENTS TO McCLINTOCK GATE STATION VOLLMER ROAD



Please add "PCD File No. PPR-22-015" to the bottom right hand corner.

ISSUED FOR CONSTRUCTION
APRIL 26, 2021

ENGINEERS STATEMENT

THESE DETAILED PLANS AND SPECIFICATIONS WERE PREPARED UNDER MY DIRECTION AND SUPERVISION.

Theodore E. Christensen
THEODORE E. CHRISTENSEN, P.E.

05-10-2021
DATE



NOTICE:
THIS DOCUMENT CONTAINS PROPRIETARY INFORMATION AND IT SHALL NOT BE USED OR REPRODUCED OR ITS CONTENTS DISCLOSED, IN WHOLE OR IN PART, WITHOUT THE PRIOR WRITTEN CONSENT OF MEARS.

NO	DATE	REVISION DESCRIPTION	BY	CKD	APP
3	4/26/21	ISSUED FOR CONSTRUCTION	MHJ	JJS	TEC
2	3/16/21	RELEASED AS ENTIRE PACKAGE; REV. IDX-002, PPL-202, 205, 206	MHJ	JJS	TEC
1	3/15/21	CIVIL, PIPING, INST. & ELEC. RELEASED AS SEPARATE PACKAGES	MHJ	JJS	TEC



METER & REGULATOR INSTALLATION
MCCLINTOCK GATE STATION
VOLLMER ROAD
EL PASO COUNTY, COLORADO

JOB NUMBER: 2007
DRAWING NUMBER: 2007-TTL-001
APPROVED BY: TEC

SCALE: (11"x17")	NA
DATE: (ORIG)	04-26-2021
DRAWN:	MHJ
CHECKED:	JJS

DRAWING INDEX

Please revise drawing index to show only submitted sheets or identify which sheets have been submitted.

SHEET NO.	DWG NO.	DESCRIPTION	SHEET NO.	DWG NO.	DESCRIPTION	SHEET NO.	DWG NO.	DESCRIPTION
1	2007-TTL-001	Title Sheet			ELECTRICAL DRAWINGS - CONDUIT			ELECTRICAL DRAWINGS - CONTINUED
2	2007-IDX-002	Drawing Index	37	2007-SFZ-250	Class/Division Safety Zones	73	2007-ELU-411	Building Conduit Entry
3	2007-CVR-003	General Notes	38	2007-ELC-251	Conduit Layout - West	74	2007-ELU-412	Overhead Mounted Gas Detector
		CIVIL DRAWINGS	39	2007-ELC-252	Conduit Layout - East	75	2007-ELU-413	Wall Mount Light
4	2007-CSP-001	Site Plan	40	2007-ELC-255	Conduit & Cable Schedule	76	2007-ELU-415	Moisture Analyzer Details
5	2007-CSP-002	Site Plan Expanded	41	2007-ELC-256	Conduit & Cable Schedule	77	2007-ELU-416	Reg Bldg Lighting Profile
6	2007-CSP-002A	Grading Plan	42	2007-ELC-257	Conduit & Cable Schedule	78	2007-ELU-417	Reg Bldg Conduit/Fitting Details
7	2007-CSP-002B	Grading Plan - SKETCH (FOR REFERENCE ONLY)	43	2007-ELC-258	Conduit & Cable Schedule	79	2007-ECT-501	RACK 1 Slot 5 RS485 Input
8	2007-FLP-002	Foundation Location Plan Meter Setting & Moisture Bldg	44	2007-ELC-259	Conduit & Cable Schedule	80	2007-ECT-502	ROC Analog Input 1, Slot 12
9	2007-FLP-003	Foundation Location Plan Regulator Building	45	2007-ELC-260	Conduit & Cable Schedule	81	2007-ECT-503	ROC Analog Input 2, Slot 13
10	2007-FLP-003A	Foundation Location Plan Control Shelter	46	2007-ELC-261	Conduit & Cable Schedule	82	2007-ECT-504	ROC Analog Input 3, Slot 14
11	2007-FLP-004	Foundation Location Plan Regulator Building			ELECTRICAL DRAWINGS - GROUNDING	83	2007-ECT-505	ROC Analog Input Slot 10, Regulator Run 3 (future)
12	2007-FLP-006	Regulator Building Foundation Rebar	47	2007-BOM-301	Electric & Panel Bill of Materials	84	2007-ECT-506	ROC Analog Input 4, Slot 7
		PROCESS & INSTRUMENTATION DIAGRAM	48	2007-ELG-302	Grounding Layout	85	2007-ECT-507	ROC Digital Input 1, Slot 6
13	2007-PID-101	P & ID Legends Part 1	49	2007-ELG-303	Grounding Details - Inverted Bathtub Type	86	2007-ECT-508	ROC Digital Input 2, Slot 9
14	2007-PID-102	P & ID Legends Part 2	50	2007-ELG-304	Grounding Detail for Building or Equipment Column	87	2007-ECT-509	ROC Digital Output 1
15	2007-PID-103	P & ID Legends Part 3	51	2007-ELG-305	Grounding Details for Ground Level Junction Box	88	2007-ECT-510	Spare Cables - Measurement
16	2007-PID-104	P & ID Legends Part 4	52	2007-ELG-306	Grounding Detail - Ground Level Test Cell	89	2007-ECT-511	ROC800 Remote Operations Controller Details
17	2007-PID-105	P & ID Legends Part 5	53	2007-ELG-307	Ground Rod Detail	90	2007-ECT-512	Odorant ROC Analog Input 1, Slot 6
18	2007-PID-106	Piping & Instrumentation Diagram	54	2007-ELG-308	Grounding Detail - Irreversible Mechanical Crimp	91	2007-ECT-513	Odorant ROC Analog Input 2, Slot 7
		MECHANICAL DRAWINGS	55	2007-ELG-309	Ground Rod Test Well Detail	92	2007-ECT-514	Odorant ROC Digital Input 1, Slot 8
19	2007-BOM-201	Piping Bill of Materials	56	2007-ELG-310	Building Skid Ground Detail	93	2007-ECT-515	Odorant ROC Digital Output 1, Slot 10
20	2007-PPL-202	Meter Station to Kinder-Morgan Tie-in Plan & Profile	57	2007-ELG-311	Building Ground Penetration Detail	94	2007-ECT-516	Odorant ROC800 Remote Operations Controller Details
21	2007-PPL-203	Meter Station Plan View			ELECTRICAL DRAWINGS	95	2007-ECT-520	Panel Details
22	2007-PPL-204	Meter Station Profiles - Meter Runs	58	2007-ELM-351	Regulator Bldg Elec Fixture & Equipment Plan	96	2007-ECT-521	JB-7 to JB-9 Panel Details
23	2007-PPL-205	Meter Station Profiles - Inlet & Outlet	59	2007-ELU-401	120 VAC Heat & Light Diagram - Regulator Building	97	2007-ECT-522	JB-22 Panel Details
24	2007-PPL-205A	Meter Station to Regulator Station	60	2007-ELU-402	24 VDC Controls/Sensor Diagram - Regulator Building	98	2007-ECT-531	Controls
25	2007-PPL-206	Regulator Station Plan	61	2007-ELU-403	One-Line Diagram - Main Power Feed	99	2007-ECT-532	Controls
26	2007-PPL-207	Regulator Station Profile - East & West Views	62	2007-ELU-405	Interior/Exterior Light Support Details	100	2007-ECT-551	Control Shelter Plan
27	2007-PPL-208	Regulator Station Profile - Inlet & Outlet Views	63	2007-ELU-406A	Bruest Heater #1 Wiring Diagram, JB-22	101	2007-ECP-601	CP Test Station Layout
28	2007-PPL-209	Regulator Station to Kinder-Morgan Tie-in	64	2007-ELU-406B	Bruest Heater #2 Wiring Diagram, JB-22	102	2007-ECP-602	AC Mitigation Details
29	2007-TYP-212	Typical Above Grade Pipe Support Details	65	2007-ELU-406C	Bruest Heater Wiring Diagram, REG101 & REG102			
30	2007-TYP-213	Flange Details	66	2007-ELU-406D	Bruest Heater Wiring Diagram, REG201 & REG202			
		INSTRUMENTATION	67	2007-ELU-406E	Bruest Heater Wiring Diagram, FUTURE			
31	2007-PTB-221	Std Automated Block Valve Connection Detail Ortho	68	2007-ELU-407	Electric Service Details			
32	2007-PTB-222	Regulator Station Control Details - Freeze-Fiter	69	2007-ELU-408	Regulator Building South Wall Profile			
33	2007-PTB-223	Regulator Station Control Details - Area Heater	70	2007-ELU-409	Emergency Power Panel			
34	2007-PTB-224	3051 Pressure Transmitter	71	2007-ELU-409A	Commercial Power Lighting Panel			
35	2007-PTB-225	Standard Pressure Transmitter	72	2007-ELU-410	Hazardous Building Conduit Entry			
36	2007-PTB-226	3144 Temperature Transmitter						

ISSUED FOR
CONSTRUCTION
APRIL 26, 2021

C:\Projects\099 - Mears Projects\2020-07-15 - Colorado Springs Utilities\2020-12-28 - Revisions by MHJ\2007-05-10.dwg PLOTTED BY: JOHNSON, MATT @ 9/10/2021 10:14 AM



NOTICE:
THIS DOCUMENT CONTAINS PROPRIETARY INFORMATION AND IT SHALL NOT BE USED OR REPRODUCED OR ITS CONTENTS DISCLOSED, IN WHOLE OR IN PART, WITHOUT THE PRIOR WRITTEN CONSENT OF MEARS.

NO	DATE	REVISION DESCRIPTION	BY	CKD	APP
3	4/26/21	ISSUED FOR CONSTRUCTION	MHJ	JJS	TEC
2	3/16/21	RELEASED AS ENTIRE PACKAGE; REV. IDX-002, PPL-202, 205, 206	MHJ	JJS	TEC
1	3/15/21	CIVIL, PIPING, INST. & ELEC. RELEASED AS SEPARATE PACKAGES	MHJ	JJS	TEC

PREPARED BY:

METER & REGULATOR INSTALLATION
MCCLINTOCK GATE STATION
VOLLMER ROAD
EL PASO COUNTY, COLORADO

JOB NUMBER: 2007 DRAWING NUMBER: 2007-IDX-002 APPROVED BY: TEC

SCALE: (11"x17")	NA
DATE: (ORIG)	04-26-2021
DRAWN:	MHJ
CHECKED:	TEC

GENERAL REQUIREMENTS:

1. ALL PIPELINE AND FACILITY CONSTRUCTION INCLUDING CONCRETE WORK, EXCAVATING, GRADING, EARTHWORK, ROADWAYS, FENCING, CULVERTS AND STRUCTURAL STEEL SHALL BE DONE IN ACCORDANCE WITH CONTRACT DOCUMENTS AND AS INDICATED ON THE DRAWINGS AND RELATED PERMITS. ALL FIELD MODIFICATIONS MUST BE APPROVED BY THE CSU PROJECT MANAGER OR THE PROJECT TEAM MEMBER PRIOR TO PROCEEDING.
2. ALL PIPELINE WELDS ARE TO BE NON-DESTRUCTIVELY TESTED (100% NDT).
3. ALL DIMENSIONS SHOWN ARE US FEET AND SHALL BE FIELD VERIFIED AND RECORDED ON AS-BUILT DRAWINGS
4. CONTRACTOR SHALL COMPLY WITH THE REQUIREMENT SPECIFIED IN THE DETAIL DRAWINGS, TYPICAL DRAWINGS, CONSTRUCTION LINE LIST, CONSTRUCTION SPECIFICATIONS AND ALL OTHER PROJECT DOCUMENTS.
5. CONTRACTOR SHALL REVIEW TYPICAL CONSTRUCTION DRAWINGS AND IMPLEMENT METHODS WHERE REQUIRED.
6. THE CONTRACTOR IS RESPONSIBLE FOR THE PROTECTION AND RESTORATION OF ALL UNDERGROUND STRUCTURES, UTILITIES, PIPELINES AND DRAIN TILES ENCOUNTERED DURING CONSTRUCTION OF THE PROJECT. THE CONTRACTOR IS RESPONSIBLE FOR LOCATING AND IDENTIFYING ALL UNDERGROUND STRUCTURES, UTILITIES AND PIPELINES WITHIN ALL WORK AREAS. THE CONTRACTOR IS TO CONTACT THE COLORADO ONE-CALL CENTER AND USE ITS SERVICES TO LOCATE AND IDENTIFY THESE UNDERGROUND STRUCTURES, UTILITIES AND PIPELINES. PRIOR TO CONSTRUCTION, CONTRACTOR IS TO COMPLY WITH ALL PERMIT DOCUMENTS AND TO CONTACT THE OWNERS AND OPERATORS OF THE IDENTIFIED UNDERGROUND STRUCTURES, UTILITIES AND PIPELINES AS NOTED IN THE PERMIT DOCUMENTS AND INFORM THE OWNERS AND OPERATORS OF THE PENDING CONSTRUCTION PLANS, ACTIVITIES AND SCHEDULE; THE CONTRACTOR IS TO THEN FIELD VERIFY LOCATION AND DEPTHS OF THE AFFECTED UNDERGROUND STRUCTURES, UTILITIES AND PIPELINES.

7. EXISTING UTILITIES AS SHOWN ON THESE DRAWINGS ARE FROM THE BEST AVAILABLE INFORMATION. THE CONTRACTOR IS RESPONSIBLE FOR VERIFYING THE LOCATION OF ALL UTILITIES THAT MAY BE AFFECTED BY THE PROJECT.
8. THE INFORMATION SHOWN IN THESE DRAWINGS CONCERNING THE TYPE AND LOCATION OF UNDERGROUND AND OTHER UTILITIES IS NOT GUARANTEED TO BE ACCURATE OR ALL INCLUSIVE. THE CONTRACTOR IS RESPONSIBLE FOR MAKING ALL DETERMINATIONS AS TO THE TYPE AND LOCATION OF UNDERGROUND AND OTHER UTILITIES AS MAY BE NECESSARY TO AVOID DAMAGE.
9. CONTRACTOR SHALL PERFORM FIELD CHECKS FOR COORDINATES, ELEVATIONS, AND DIMENSIONAL VERIFICATION OF DRAWINGS PRIOR TO FABRICATING PIPING SYSTEMS AND POURING OF CONCRETE FOUNDATIONS.
10. WORK MATS OR OTHER APPROVED PROTECTION ARE TO BE INSTALLED OVER FOREIGN LINES AS REQUIRED BY PERMIT AND TYPICAL DRAWINGS. OWNERS OF FOREIGN PIPELINES SHALL BE NOTIFIED AS REQUIRED IN PERMIT DOCUMENTS AND TYPICAL DRAWINGS, PRIOR TO BEGINNING WORK.
11. THE OCCUPATIONAL SAFETY AND HEALTH ADMINISTRATION (OSHA) SAFETY AND HEALTH STANDARDS (29 CFR PART 1926) REQUIRE THAT EXCAVATIONS BE CONSTRUCTED IN ACCORDANCE WITH THE CURRENT OSHA GUIDELINES. THE CONTRACTOR IS SOLELY RESPONSIBLE FOR DESIGNING AND CONSTRUCTING STABLE TEMPORARY EXCAVATIONS AND SHOULD SHORE, SLOPE, OR BENCH THE SIDES OF THE EXCAVATIONS AS REQUIRED TO MAINTAIN STABILITY OF BOTH THE EXCAVATION SIDES AND BOTTOM. THE CONTRACTOR'S "RESPONSIBLE PERSON", AS DEFINED IN 29 CFR PART 1926, SHOULD EVALUATE THE SOIL EXPOSED IN THE EXCAVATIONS AS PART OF THE CONTRACTOR'S SAFETY PROCEDURES. IN NO CASE SHOULD THE SLOPE HEIGHT, SLOPE INCLINATION, OR EXCAVATION DEPTH, INCLUDING UTILITY TRENCH EXCAVATION DEPTH, EXCEED THOSE SPECIFIED IN LOCAL, STATE AND FEDERAL SAFETY REGULATIONS.

CATHODIC PROTECTION:

ISSUED FOR
CONSTRUCTION
APRIL 26, 2021

12. CATHODIC PROTECTION TEST LEADS SHALL BE INSTALLED AS SHOWN ON DRAWINGS AND/OR AS DIRECTED BY THE CSU PROJECT MANAGER OR THE PROJECT TEAM MEMBER. TEST STATIONS TO BE INSTALLED NEAR PROPERTY LINES OR FENCES.

CONSTRUCTION WORK SPACE:

13. CONSTRUCTION WORKSPACE AND WORK AREAS ARE WITHIN THE FENCED BOUNDARIES OF THE McCLINTOCK GATE STATION AS PERMITTED BY COLORADO SPRINGS UTILITIES AND KINDER MORGAN. IN NO EVENT SHALL THE WORK AREA EXCEED THE DESCRIPTION UNLESS SPECIFICALLY AUTHORIZED BY THE CSU PROJECT MANAGER OR THE PROJECT TEAM MEMBER.
14. CONSTRUCTION WORKSPACE CONFIGURATION SHALL BE AS SHOWN ON CONSTRUCTION TYPICALS, UNLESS OTHERWISE DIRECTED OR APPROVED BY THE CSU PROJECT MANAGER OR THE PROJECT TEAM MEMBER.
15. MINIMUM LINE PIPE COVER IS 36-INCHES UNLESS OTHERWISE NOTED.

SEPARATION FROM OTHER STRUCTURES:

16. THE MINIMUM CLEARANCE BETWEEN THE PROPOSED PIPELINE AT FOREIGN PIPELINE CROSSINGS SHALL BE 24 INCHES UNLESS OTHERWISE NOTED ON THE DRAWING. PIPELINE PARALLEL TO ANY OTHER UNDERGROUND FACILITY MUST BE INSTALLED WITH AT LEAST 5 FEET OF SEPARATION FROM ANY OTHER UNDERGROUND STRUCTURE/UTILITY NOT ASSOCIATED WITH THE PIPELINE UNLESS NOTED ON THE DRAWINGS.

RESTORATION AND CLEAN UP:

17. CONTRACTOR SHALL REFERENCE CONSTRUCTION SPECIFICATIONS FOR RESTORATION TECHNIQUES.

HYDROSTATIC TEST REQUIREMENTS:

18. HYDROSTATIC TEST SHALL MEET THE REQUIREMENTS OF 49CFR, §192 SUBPART J AND SHALL BE CONDUCTED IN ACCORDANCE WITH THE PROJECT HYDRO-TEST PLAN.

PAINTING AND COATING REQUIREMENTS:

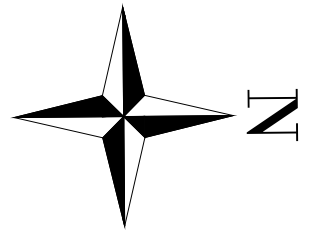
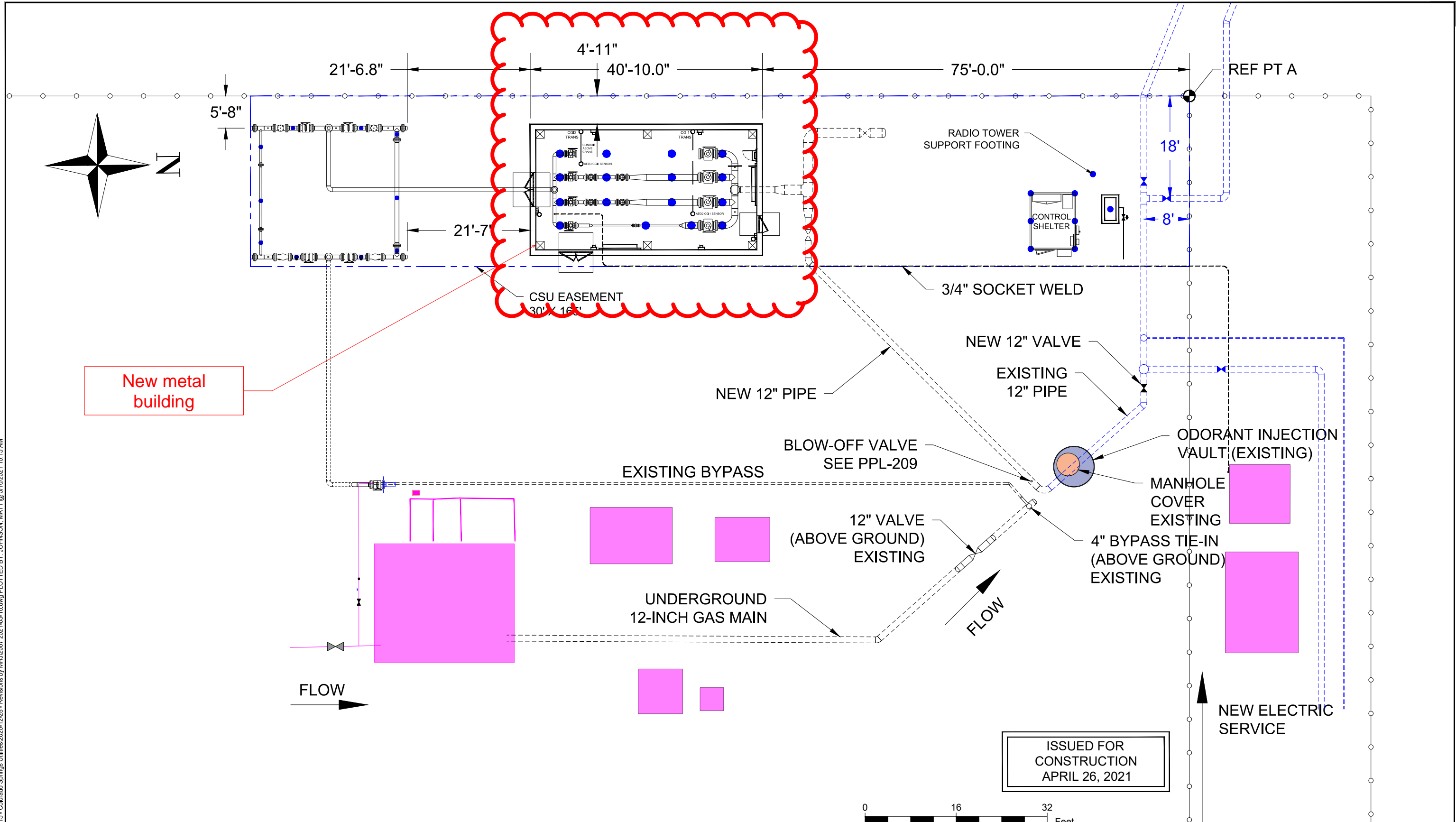
19. FIELD COATING OF LINE PIPE IS TO BE IN COMPLIANCE WITH CONSTRUCTION SPECIFICATIONS.

C:\Projects\099 - Mears Projects\2020-07-15 - Colorado Springs Utilities\2020-12-28 - Revisions by MHJ\2007-2021-05-10.dwg PLOTTED BY: JOHNSON, MATT @ 5/10/2021 10:14 AM

NOTICE: THIS DOCUMENT CONTAINS PROPRIETARY INFORMATION AND IT SHALL NOT BE USED OR REPRODUCED OR ITS CONTENTS DISCLOSED, IN WHOLE OR IN PART, WITHOUT THE PRIOR WRITTEN CONSENT OF MEARS						
3	4/26/21	ISSUED FOR CONSTRUCTION	MHJ	JJS	TEC	
2	3/16/21	RELEASED AS ENTIRE PACKAGE; REV. IDX-002, PPL-202, 205, 206	MHJ	JJS	TEC	
1	3/15/21	CIVIL, PIPING, INST. & ELEC. RELEASED AS SEPARATE PACKAGES	MHJ	JJS	TEC	
NO	DATE	REVISION DESCRIPTION	BY	CKD	APP	

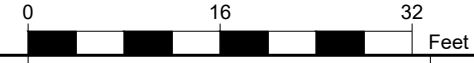
 Colorado Springs Utilities <i>It's how we're all connected</i>	 mears <small>A QUANTA SERVICES COMPANY</small>	GENERAL NOTES MCCLINTOCK GATE STATION VOLLMER ROAD EL PASO COUNTY, COLORADO			SCALE: (11"x17") NA
		JOB NUMBER: 2007	DRAWING NUMBER: 2007-CVR-003	APPROVED BY: TEC	DATE: (ORIG) 04-26-2021
				DRAWN: BMW	CHECKED: TEC

C:\Projects\099 - Mears Projects\2020-07-15 - Colorado Springs Utilities\2020-12-28 - Revisions by MHJ\2007 2021-05-10.dwg PLOTTED BY: JOHNSON, MATT @ 5/10/2021 10:15 AM



New metal building

ISSUED FOR
CONSTRUCTION
APRIL 26, 2021

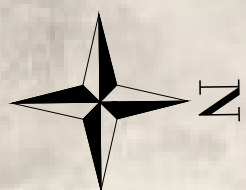


NO	DATE	REVISION DESCRIPTION	BY	CKD	APP
3	4/26/21	ISSUED FOR CONSTRUCTION	MHJ	JJS	TEC
2	3/16/21	RELEASED AS ENTIRE PACKAGE; REV. IDX-002, PPL-202, 205, 206	MHJ	JJS	TEC
1	3/15/21	CIVIL, PIPING, INST. & ELEC. RELEASED AS SEPARATE PACKAGES	MHJ	JJS	TEC



SITE PLAN McCLINTOCK STATION		
JOB NUMBER: 2007	DRAWING NUMBER: 2007-CSP-001	APPROVED BY: TEC
SCALE: (11"x17") 1" = 16'		DATE: (ORIG) 04-26-2021
DRAWN: BMW		CHECKED: TEC

Please identify all property lines, right-of-ways, all existing and proposed easements, and provide a legend.



- Please show and label the dimensions of the proposed building.
- Please label the setbacks from the proposed building to the property lines.

Please label the height of the fence.

New metal building

157'

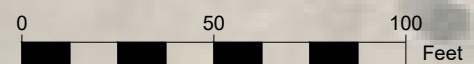
Please label 60' ROW for Vollmer Rd.

VOLLMER RD

Aerial view identifies this areas belonging to a different parcel. Please show and label property lines. Please identify easement to access different parcel.

Please label existing driveway and provide access width dimensions. Applicant will be required to apply for a commercial driveway access permit.

ISSUED FOR CONSTRUCTION
APRIL 26, 2021



C:\Projects\099 - Mears Projects\2020-07-15 - Colorado Springs Utilities\2020-12-28 - Revisions by MHJ\2007 2021-05-10.dwg PLOTTED BY: JOHNSON, MATT @ 5/10/2021 10:15 AM

NOTICE:
THIS DOCUMENT CONTAINS PROPRIETARY INFORMATION AND IT SHALL NOT BE USED OR REPRODUCED OR ITS CONTENTS DISCLOSED, IN WHOLE OR IN PART, WITHOUT THE PRIOR WRITTEN CONSENT OF MEARS

NO	DATE	REVISION DESCRIPTION	BY	CKD	APP
3	4/26/21	ISSUED FOR CONSTRUCTION	MHJ	JJS	TEC
2	3/16/21	RELEASED AS ENTIRE PACKAGE; REV. IDX-002, PPL-202, 205, 206	MHJ	JJS	TEC
1	3/15/21	CIVIL, PIPING, INST. & ELEC. RELEASED AS SEPARATE PACKAGES	MHJ	JJS	TEC

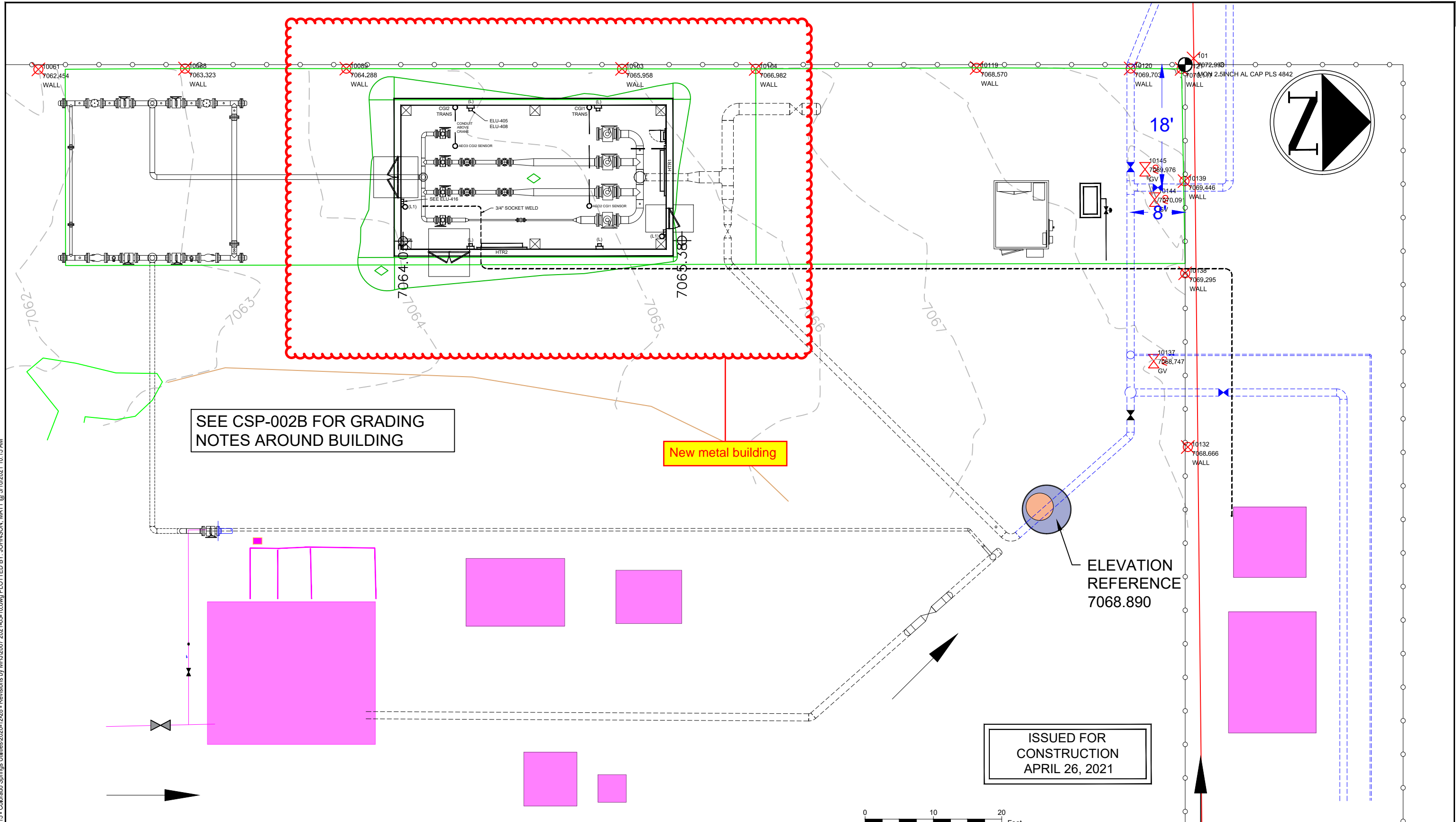


McCLINTOCK STATION
SITE PLAN

JOB NUMBER: 2007 DRAWING NUMBER: CSP-002 APPROVED BY: TEC

SCALE: (11"x17")
AS SHOWN
DATE: 04-26-2021 (ORIG)
DRAWN: BMW
CHECKED: TEC

C:\Projects\099 - Mears Projects\2020-07-15 - Colorado Springs Utilities\2020-12-28 - Revisions by MHJ\2007 2021-05-10.dwg PLOTTED BY: JOHNSON, MATT @ 5/10/2021 10:15 AM



SEE CSP-002B FOR GRADING NOTES AROUND BUILDING

New metal building

ELEVATION REFERENCE 7068.890

ISSUED FOR CONSTRUCTION APRIL 26, 2021

NOTICE:
THIS DOCUMENT CONTAINS PROPRIETARY INFORMATION AND IT SHALL NOT BE USED OR REPRODUCED OR ITS CONTENTS DISCLOSED, IN WHOLE OR IN PART, WITHOUT THE PRIOR WRITTEN CONSENT OF MEARS

NO	DATE	REVISION DESCRIPTION	BY	CKD	APP
3	4/26/21	ISSUED FOR CONSTRUCTION	MHJ	JJS	TEC
2	3/16/21	RELEASED AS ENTIRE PACKAGE; REV. IDX-002, PPL-202, 205, 206	MHJ	JJS	TEC
1	3/15/21	CIVIL, PIPING, INST. & ELEC. RELEASED AS SEPARATE PACKAGES	MHJ	JJS	TEC



<p>SCALE: (11"x17") AS SHOWN</p>		
<p>DATE: (ORIG) 04-26-2021</p>		
<p>DRAWN: BMW</p>		
<p>CHECKED: TEC</p>		
<p>JOB NUMBER: 2007</p>	<p>DRAWING NUMBER: 2007-CSP-002A</p>	<p>APPROVED BY: TEC</p>