

## **White Cottage Farm Fire Protection Report**

The subject property is located at 16910 Thompson Road, Colorado Springs, Colorado and pending official inclusion into the district will be within the boundary of the Black Forest Fire/Rescue Protection District (BFFR) response area 2. The BFF board has approved the property's inclusion, which will be final upon El Paso County District Court approval.

BFFR is a title 32 Special Fire District providing 24/7 fire protection services to include fire suppression – both structural and wildland, Emergency Medical Services to include advanced life support and transport, hazardous material response and rescue. Due to its robust response plan and water carrying capabilities, Black Forest Fire/Rescue has an ISO rating of 5 throughout the district.

The property is considered to be Moderate-High risk according to El Paso County Fire Hazard Maps, a copy of which is included in this report.

Once the subject property has been included in the District, the Black Forest Fire/Rescue Protection District will provide fire and emergency services to this proposed subdivision. The BFF is a participating member of a regional coalition of fire departments called the North Group. This entity was designed to provide enhanced response capabilities to all hazard incidents, including structure fires, using automatic and mutual aid agreements. The North Group membership includes Black Forest Fire/Rescue, Falcon Fire Protection District, Donald Westcott Fire, Tri-Lakes/Monument Fire, Air Force Academy Fire, Colorado Springs Fire, Larkspur Fire and Palmer Lake Fire. The automatic and mutual aid agreements have been formalized through an intergovernmental agreement that has been entered into by each of these entities.

The primary response station due to proximity would be BFFR Station 2, opened in 2009, which is located at 16465 Ridge Run Drive, approximately 1.5 miles from the station with a response time of approximately 3 minutes. (Station 1 at 11445 Teachout Road opened in 2003.) Each facility houses an Engine, Water Tender, Brush Truck and Ambulance. BFFR is primarily a career department with two stations in service 24 hours per day, 7 days per week. Daily staffing is 6 personnel per day with 3 command staff and 3 staff members at each station. The local departments providing automatic mutual aid are also career departments, which can provide approximately 12-20 additional personnel for any significant incident requiring further support.

Any initial response to a structure fire on the subject property will be from BFFR and would include three pieces of equipment: a type 1 engine carrying 500 gallons of water, a type 1 engine carrying 750 gallons of water and a tender/pumper carrying 1,800 gallons of water. This would produce an initial fire flow of 240 GPM for the first 9.5 minutes. Additional apparatus would be called as needed from

District Station 1 and from surrounding fire department partners, as required. This additional equipment would increase fire flow to 240 GPM for 31 minutes. BFFR's initial personnel response would be 7-9 personnel on the initial alarm with an additional 7-9 personnel from mutual aid partners. Additional command staff and firefighters to assist with command-and-control activities can be made available, if required, as the incident progresses.

The proposed uses on this site will be evaluated by the BFFR Fire Marshall and the Colorado Springs Fire Department to determine whether alternative fire suppression like fire cisterns, sprinkling or dry hydrants might be required.

**The information provided in this report was based on a meeting and subsequent correspondence with Deputy Chief/Fire Marshall Jim Rebitski of the Black Forest Fire/ Rescue Protection District as well as other reliable sources.**



# COLORADO WILDFIRE RISK

Understanding the wildland-urban interface risk index



## EL PASO COUNTY

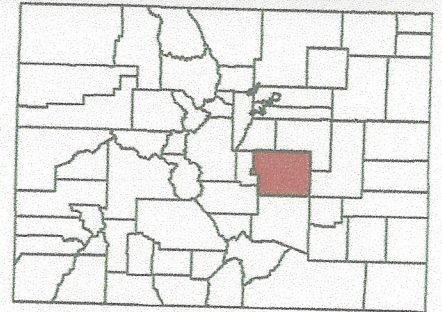
### Adapt, Prepare by Knowing Fire Risk

Each county in Colorado is unique, with a character shaped by individual history, land, climate, people and resources. However, something every county in the state shares is the potential to be negatively affected by wildfires.

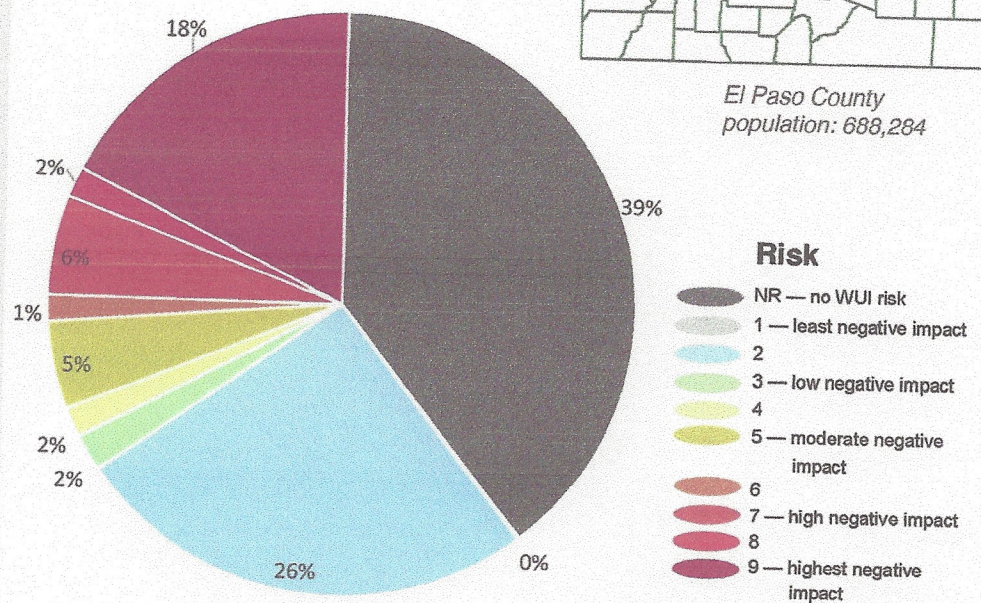
In order to effectively prepare for the impact of wildfires, residents, leaders and community planners must be aware of the wildfire risk associated with living in the wildland-urban interface and recognize actions that can be taken to reduce this risk. Connecting with wildfire resources — like those listed below — can help guide wildfire adaptation efforts from a personal to a community-wide level.

### WUI Risk

This chart shows the portion of El Paso County's residents who live within the wildland-urban interface classified by level of wildfire impact on lives and property.



El Paso County population: 688,284



**THE DATA:** The Wildland-Urban Interface Risk Index, created by the Colorado State Forest Service, is a rating of the potential impact of a wildfire on people and their homes. It is created using housing density combined with modeled fire behavior to determine where the greatest potential impact to people and homes is likely to occur. The index is calculated consistently for each Colorado county, available in the Colorado Forest Atlas at [coloradoforestatlas.org](http://coloradoforestatlas.org).

### WUI

The wildland-urban interface (WUI) is an area where structures or other human developments meet or intermingle with wildland vegetation or fuels.

Approximately half of Colorado's population lives in the WUI. As of 2018, 2.9 million of the state's 5.7 million residents live in these vulnerable areas.



### Wildfire Impact

Wildfires are a natural part of every ecosystem in Colorado. However, wildfire can also harm human improvements and health.

The impact a fire can have in any WUI location is determined primarily by ignitability of structures, natural vegetation (fuel) present, and the proximity of fuels to human improvements.

### What Can Be Done?

There are many actions that can reduce wildfire risk. From homeowners establishing defensible space and hardening structures, to community-wide mitigation efforts and fire department risk assessments, to county-wide building code and regulation adoption. Programs exist to guide efforts to adapt to living with wildfire in Colorado.

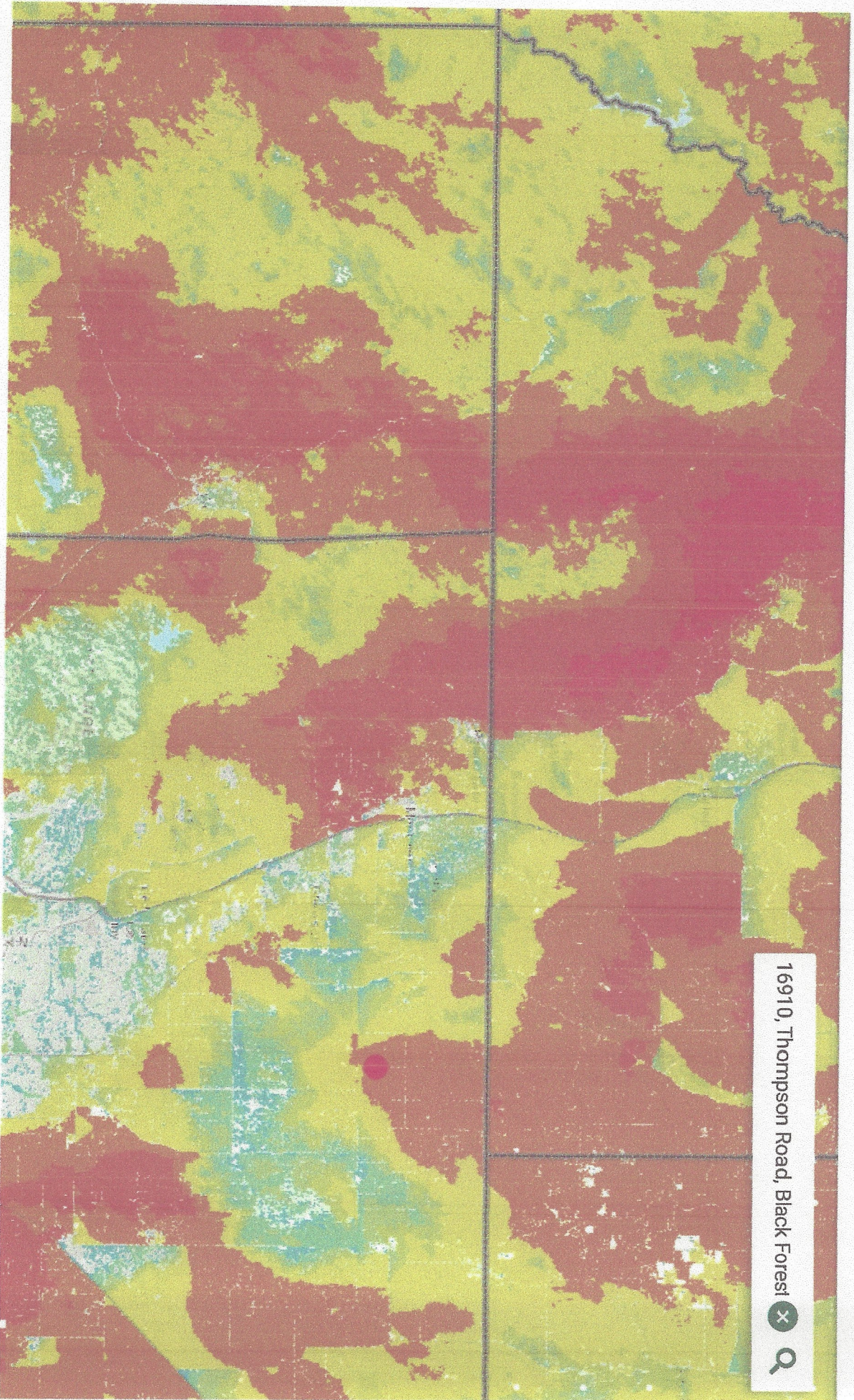
#### Learn more

The Colorado State Forest Service offers more about wildfire mitigation at [csfs.colostate.edu/wildfire-mitigation](http://csfs.colostate.edu/wildfire-mitigation).





# WILDFIRE RISK PUBLIC VIEWER



16910, Thompson Road, Black Forest X 🔍





# Legend

<https://co-pub.coloradoforeststas.org>


## Burn Probability

---

- Non-Burnable
- Very Low
- Very Low-Low
- Low
- Low-Moderate
- Moderate
- Moderate-High
- High
- High-Very High
- Very High

## County Boundaries

---

 < 1:1,500,000



## STAGE I BURN BAN IN EFFECT for the Black Forest Fire Rescue Protection District as of 1200 pm Today March 1st, 2021

Dismiss

Effective March 1st, 2021 Black Forest Fire Rescue has instituted a stage 1 burn ban until further notice. Please go to the Fire Marshal page for more information and links to valuable information or click on this bar for information regarding stage 1 ban.

(/stage-1-burn-ban-now-in-effect)



(<https://www.bffire.org/>)

Contact Us (/contact-us)

Search...	Go!
-----------	-----

### ABOUT US

(/DEMOGRAPHICS)

DEMOGRAPHICS

(/DEMOGRAPHICS)

STATIONS/APPARATUS

(/STATIONS-

APPARATUS)

RECRUITMENT

(/RECRUITMENT)

STAFF (/STAFF)

GALLERY (/GALLERY)

## Demographics

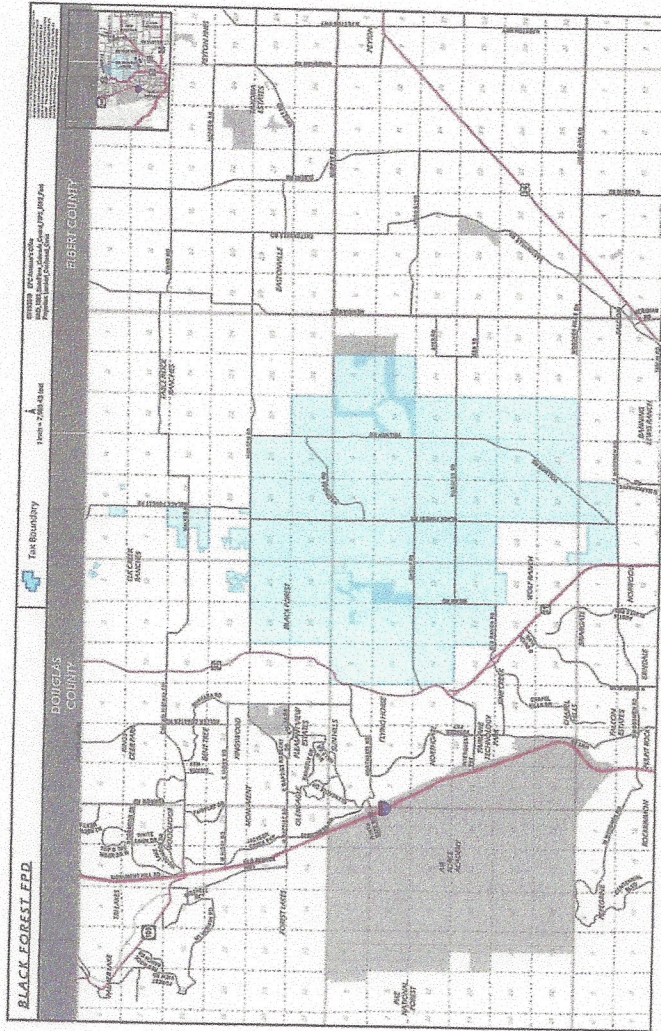
Black Forest Fire/Rescue Protection District covers approximately 50 square miles and provides service to approximately 10,000 friends and neighbors. The district is mostly a residential community with some small businesses and light commercial. The district protects approximately 5,000 structures with an assessed value of approximately \$1.4 billion.

Black Forest Fire/Rescue is a combination Department comprised of 22 career Firefighters, part-time firefighter paramedics, an Administrative Officer, and a Volunteer EMS program with 11 personnel. The District provides Advanced Life Support emergency transport for both in-district residents/visitors and as a mutual aid partner to El Paso County Fire Departments.

Black Forest Fire Rescue is also a strong community partner providing fire mitigation assessments, public education and awareness which include CPR and First Aid classes. We started the high-visibility address post program to assist homeowners in addressing their residence to make it easier to locate them in an emergency.

[Click here for Black Forest Fire's District Map. \(https://streamline.imgix.net/95d8d585-fd66-442c-8605-89d81d27a380/0f25de0f-a3fe-4cb2-ac9d-bcf90d609989/District%20Map%20of%20BFFR%205-20.pdf?ixlib=rb-1.1.0&w=200&h=200&fit=fill&fill=solid&bg=%23dfe2e2&or=180&s=deb2d0bdb1afc62cfa9e7e01fbefe2a1\)](https://streamline.imgix.net/95d8d585-fd66-442c-8605-89d81d27a380/0f25de0f-a3fe-4cb2-ac9d-bcf90d609989/District%20Map%20of%20BFFR%205-20.pdf?ixlib=rb-1.1.0&w=200&h=200&fit=fill&fill=solid&bg=%23dfe2e2&or=180&s=deb2d0bdb1afc62cfa9e7e01fbefe2a1)





COPYRIGHT © 2021 BLACK FOREST FIRE RESCUE  
11445 TEACHOUT ROAD, COLORADO SPRINGS CO 80908  
TELEPHONE (719) 495-4300

[PRIVACY POLICY \(/PRIVACY-POLICY\)](#)

POWERED BY STREAMLINE ([HTTP://WWW.GETSTREAMLINE.COM/](http://www.getstreamline.com/)) | SIGN IN  
([HTTPS://WWW.BFFIRE.ORG/USERS/SIGN\\_IN?DESTINATION=%2FDEMOGRAPHICS](https://www.bffire.org/users/sign_in?destination=%2Fdemographics))



### STAGE I BURN BAN IN EFFECT for the Black Forest Fire Rescue Protection District as of 1200 pm Today March 1st, 2021

Dismiss

Effective March 1st, 2021 Black Forest Fire Rescue has instituted a stage 1 burn ban until further notice. Please go to the Fire Marshal page for more information and links to valuable information or click on this bar for information regarding stage 1 ban.

[\(/stage-1-burn-ban-now-in-effect\)](#)



[\(https://www.bffire.org/\)](https://www.bffire.org/)

[Contact Us \(/contact-us\)](#)

Search...	Go!
-----------	-----

#### ABOUT US

[\(/DEMOGRAPHICS\)](#)

DEMOGRAPHICS

[\(/DEMOGRAPHICS\)](#)

STATIONS/APPARATUS

[\(/STATIONS-](#)

[APPARATUS\)](#)

RECRUITMENT

[\(/RECRUITMENT\)](#)

STAFF [\(/STAFF\)](#)

GALLERY [\(/GALLERY\)](#)

## Stations/Apparatus

STATION 1 11445 Teachout Road CSC 80908

Station 1 houses our administrative offices.

The station was opened in 2003.

Apparatus at Station 1 include:

- Engine 711 (Type 1)
- Engine 741 (Type 6)
- Engine 743 (Type 6)
- Tender 761 (Water hauler)
- Reserve Amabulance
- Command vehicles



BFFR Fire Engine

STATION 2 16465 Ridge Run Drive CSC 80908

The station was opened in 2009.

Apparatus at Station 2 include:

- Engine 712
- Brush Truck 742 (Type 6)
- Tender 762 (Water hauler)
- Ambulance 782 (Advanced Life Support)



BFFR Fire Engine

The District also has a small reserve fleet consisting of an engine, a tender, and an ambulance.







## STAGE I BURN BAN IN EFFECT for the Black Forest Fire Rescue Protection District as of 1200 pm Today March 1st, 2021

[Dismiss](#)

Effective March 1st, 2021 Black Forest Fire Rescue has instituted a stage 1 burn ban until further notice. Please go to the Fire Marshal page for more information and links to valuable information or click on this bar for information regarding stage 1 ban.

[\(/stage-1-burn-ban-now-in-effect\)](#)



[\(https://www.bffire.org/\)](https://www.bffire.org/)

[Contact Us \(/contact-us\)](#)

Search...	Go!
-----------	-----

**ABOUT US**

[\(/DEMOGRAPHICS\)](#)

DEMOGRAPHICS

[\(/DEMOGRAPHICS\)](#)

STATIONS/APPARATUS

[\(/STATIONS-APPARATUS\)](#)

RECRUITMENT

[\(/RECRUITMENT\)](#)

STAFF [\(/STAFF\)](#)

[GALLERY \(/GALLERY\)](#)

## Staff

Our staff is dedicated to protecting the life and property of our community.

A-Shift	B-Shift	C-Shift
Lt. Ky Emmons (Acting)	Lt. Jamal Davis	Lt. Ben Rackl
Lt. Brandon Jones (Acting)	Lt. Erik Beckstrom (Acting)	Lt. Cody Poole (Acting)
Firefighter Jason Higdon	Fire Medic Garrett Miller	Firefighter Dustin Courter
Firefighter Marina Fine	Firefighter Heather Heath	Firefighter Luke Morrone
Firefighter Tim McCormick	Firefighter Michael Alvarado	Firefighter Kevin Holbrook
Firefighter John Singsheim	Firefighter Andrew Hladik	Firefighter Lana Trezza

Volunteer EMT's	Part-Time	Support Services
Madison North	Fire Medic Bre Migoya	Chaplain Bill Lighty
Ariel Preble	Fire Medic David Haley	Chaplain Brad Noonan
Andrew Wills		Lisa Montijo
Robert Ralston		Jon Strupp
Matthew Priddy		
Ryan Peck		

### PJ Langmaid

**Position:** Fire Chief

**Phone:** 719-495-4300

**Email Address:** [firechief@bffire.org](mailto:firechief@bffire.org)

[READ MORE »](#)

[\(/pj-langmaid\)](#)





---

**James Rebitski**

**Position:** Deputy Fire Chief

**Phone:** 719-495-4300

**Email Address:** deputychief@bffire.org

READ MORE »  
(/james-rebitski)



---

**Chris Piepenburg**

**Position:** Captain/Training Officer

**Phone:** 719-495-4300

**Email Address:** training@bffire.org

READ MORE »  
(/chris-piepenburg)



---

**Rachel Dunn**

**Position:** Administrative Officer

**Phone:** 719-495-4300

**Email Address:** admin@bffire.org

READ MORE »  
(/rachel-dunn)

