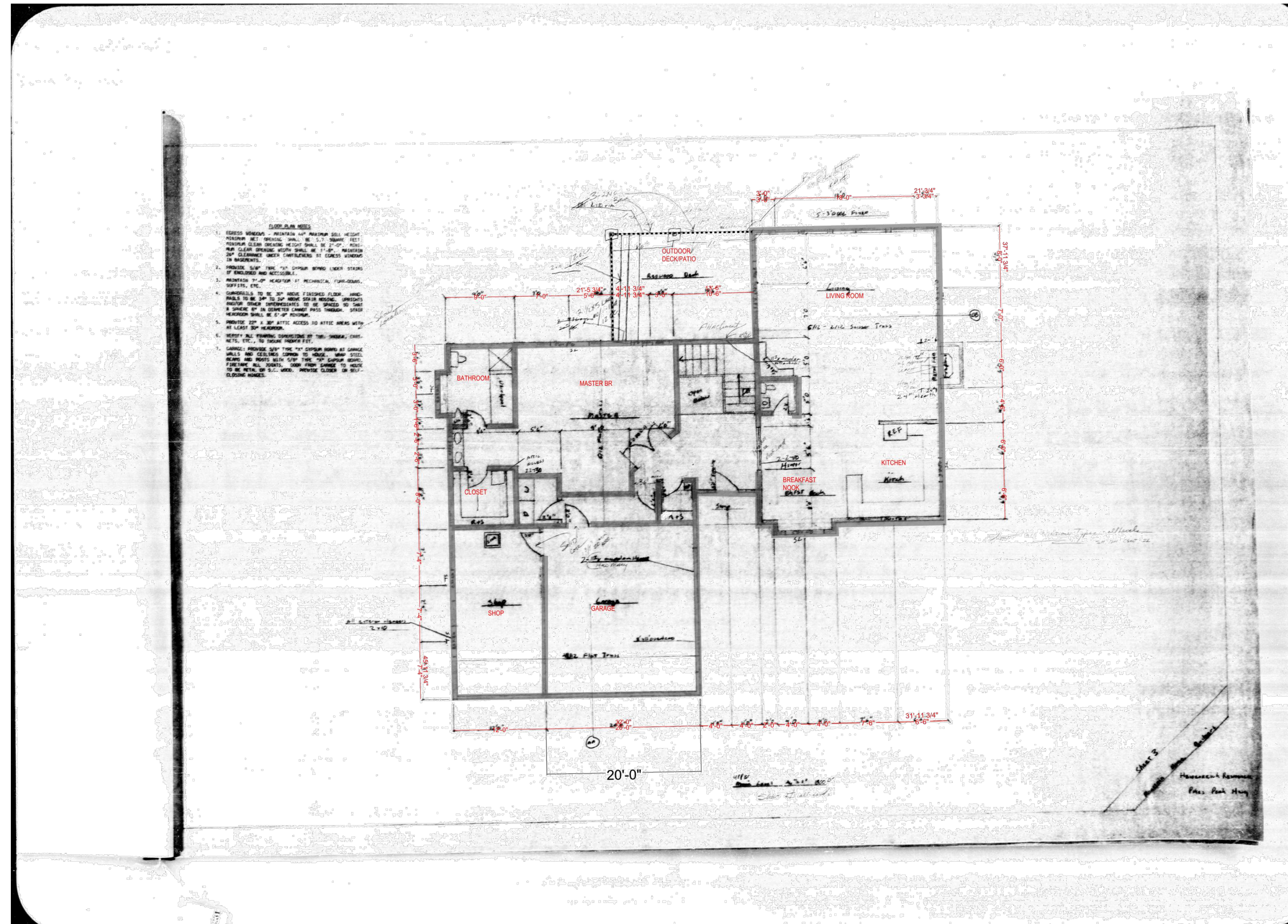


# SANDSTONE CARE DEVELOPMENT PLAN

SITUATED IN SECTION 22, TOWNSHIP 13 SOUTH, RANGE 68 WEST OF THE 6TH P.M.,  
CITY OF COLORADO SPRINGS, COUNTY OF EL PASO, STATE OF COLORADO



NOT TO SCALE

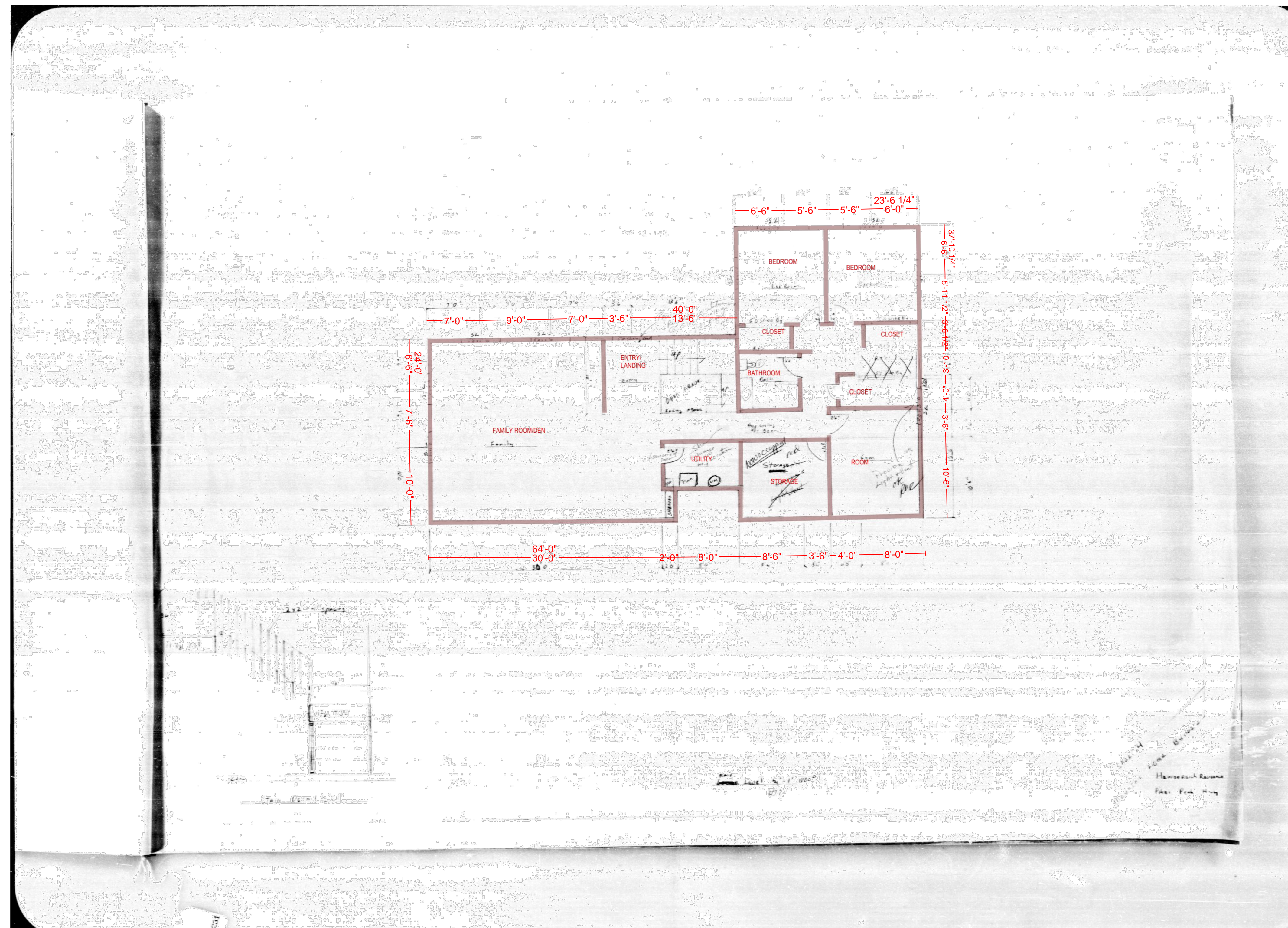
NOTE: BUILDING CONSTRUCTED 1993

**Kimley»Horn**

© 2020 KIMLEY-HORN AND ASSOCIATES, INC.  
2 NORTH NEVADA AVENUE, SUITE 300  
COLORADO SPRINGS, COLORADO 80903 (719) 453-0180



SITUATED IN SECTION 22, TOWNSHIP 13 SOUTH, RANGE 68 WEST OF THE 6TH P.M.,  
CITY OF COLORADO SPRINGS, COUNTY OF EL PASO, STATE OF COLORADO



NOTE: BUILDING CONSTRUCTED 1993