

# BEN LOMAND MOUNTAIN VILLAGE

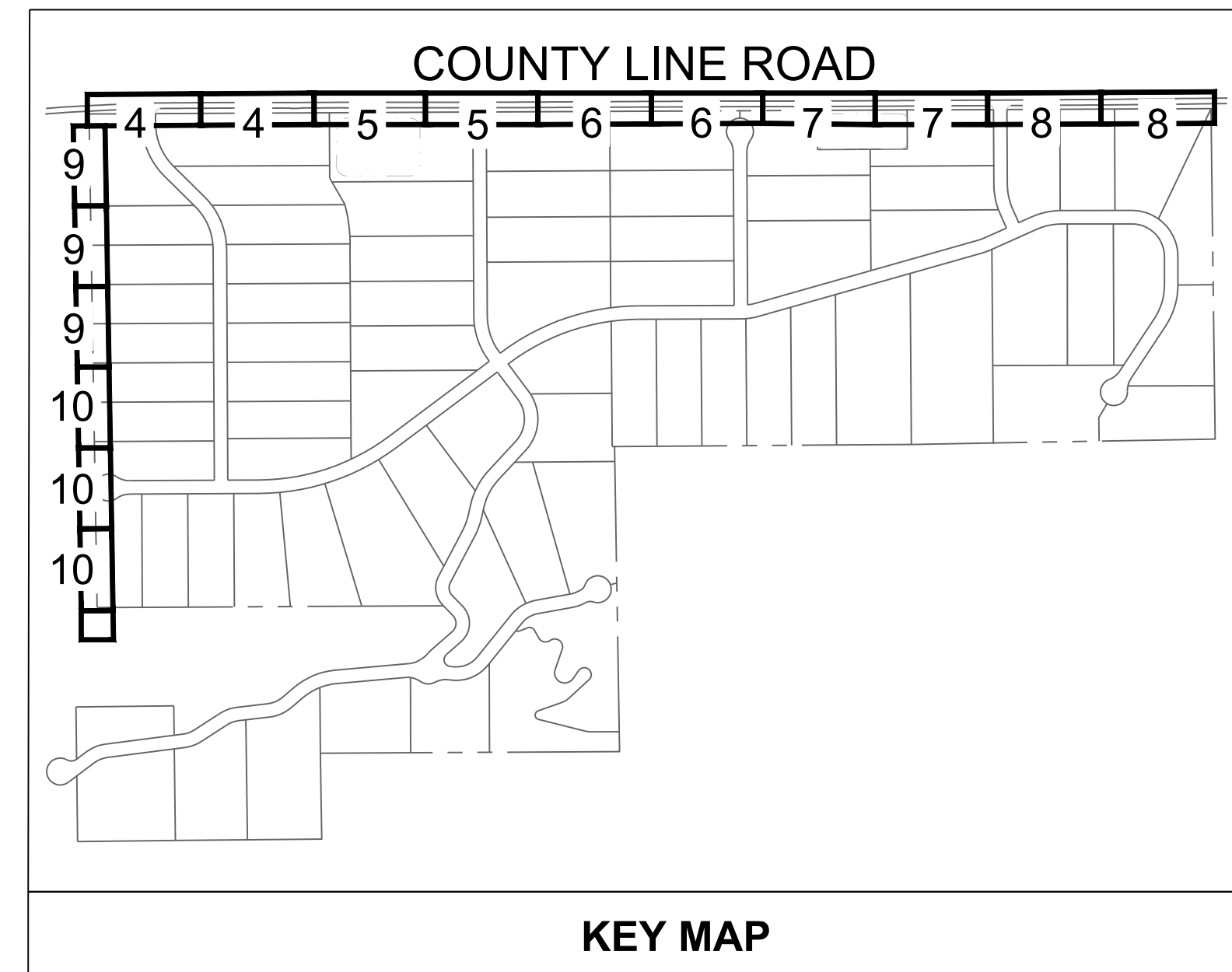
## LANDSCAPE SITE PLAN

### LANDSCAPE NOTES

1. ALL PRESERVATION AREAS CONTAINING VEGETATION DESIGNATED TO BE PRESERVED, SHALL BE FENCED OFF DURING CONSTRUCTION TO MINIMIZE DISTURBANCE IN THESE AREAS. ALL FENCING SHALL BE INSTALLED AROUND PRESERVED VEGETATION PRIOR TO ANY GRADING ON THE PROPERTY. A 4-FOOT, ORANGE CONSTRUCTION SAFETY FENCE SHALL BE USED IN THIS APPLICATION.
2. SOIL AMENDMENT - INCORPORATE 3 CUBIC YARDS/1000 SF AREA OF "PREMIUM 3 ORGANIC COMPOST", OR APPROVED EQUAL, ON BLUEGRASS TURF AREAS. INCORPORATE 2 CUBIC YARDS/1000 SF AREA OF ORGANIC COMPOST (DECOMPOSED MANURE) TO ALL NATIVE SEED AREAS. TILL INTO TOP 8" OF SOIL. FOR PLANTING PIT AMENDMENTS, SEE LANDSCAPE DETAILS. FERTILIZER REQUIREMENTS BELOW ARE BASED ON SOIL ANALYSIS.
 

|                   |               |
|-------------------|---------------|
| NITROGEN          | 0 LBS/1000 SF |
| PHOSPHORUS (P205) | 0 LBS/1000 SF |
| POTASSIUM (K20)   | 0 LBS/1000 SF |
| SULFUR (SO4-S)    | 0 LBS/1000 SF |
| LIME              | -OR-          |

RECOMMENDED SOIL AMENDMENT:  
TRI-MIX III AS SUPPLIED BY C&C SAND  
-TO BE APPLIED AS BACKFILL IN PLANTING PITS
3. CONTRACTOR TO APPLY EROSION CONTROL BLANKET TO ALL SEED AREAS WITH GREATER THAN 3:1 SLOPES.
4. FOR ALL SEED AREAS REFER TO SEED MIXES SPECIFIED ON PLANT SCHEDULE AND SEED MIX SHEET.
5. ALL NATIVE AREAS SHALL HAVE A TEMPORARY ABOVE GROUND IRRIGATION SYSTEM UTILIZED UNTIL SEED IS ESTABLISHED, AND ALL TREES AND SHRUBS WITHIN NATIVE SEED AREAS SHALL HAVE A PERMANENT DRIP IRRIGATION SYSTEM.
6. A FULLY AUTOMATED SPRINKLER IRRIGATION SYSTEM WILL DRIP ALL TREE, SHRUB, AND GROUND COVER PLANTINGS, AND SPRAY ALL TALL FESCUE SOD AND LOW ALTERNATIVE TURF AREAS. AN IRRIGATION PLAN WILL BE PREPARED AT A LATER DATE AND WILL INCLUDE AN IRRIGATION SCHEDULE THAT NOTES APPLICATION RATES BASED ON TURF TYPE, RATES FOR NEWLY INSTALLED PLANTS VS. ESTABLISHED PLANTS, AND GENERAL RECOMMENDATIONS REGARDING SEASONAL ADJUSTMENTS.
7. SOD TO BE TALL FESCUE BLEND.
8. NO SOD SHALL BE PLATED ON SLOPES IN EXCESS OF 6:1 GRADIENT
9. CONTRACTOR TO UTILIZE STOCKPILE TOPSOIL FROM GRADING OPERATION AS AVAILABLE. TILL INTO TOP 6" OF SOIL.
10. FOR GRADES REFER TO CIVIL ENGINEERING DRAWINGS.
11. NO TREES AND NOT PLANTS OVER 2-FEET TALL SHALL BE INSTALLED WITHIN 5-FEET OF ANY FIRE HYDRANTS
12. FOR TREES NOT IN PLANTING BEDS, ALLOW A 6'-0" DIAMETER BED (TREE RING) WITHOUT SOD AROUND ROOT COLLAR. APPLY SPECIFIC WOOD MULCH & DEPTH AROUND COLLAR FOLLOWING SOD INSTALLATION. NO FABRIC OR STEEL EDGER IS NECESSARY WITHIN TREE RINGS IN NATIVE AREAS. TREES IN PLANTING BEDS SHALL NOT HAVE WEED BARRIER INSTALLED WITHIN 6' OF THEIR TRUNKS.
13. ROCK: 3/4"-2" ANGULAR ROCK MULCH, TAN, AT A 3-4" DEPTH. INSTALL GEOTEXTILE FABRIC UNDER ALL ROCK AREAS.
14. ALL SHRUB BEDS TO BE ENCLOSED BY SOLID STEEL EDGING, AS A SEPARATOR FROM SOD, SEED, AND ALTERNATIVE TURF. SEPARATION BETWEEN SEED AND SEED AND BETWEEN ALTERNATIVE TURF AND SEED SHALL BE A MOWED STRIP, WITHOUT STEEL EDGING.
15. SE: SOLID STEEL EDGING TO BE: "DURAEDGE" (1/8" THICK x 4" WIDE) STEEL LANDSCAPE EDGING, WITH ROLLED EDGE AND STEEL STAKES. USE SOLID STEEL EDGING EXCEPT WHERE NOTED ON THE PLANS.
16. PSE: PERFORATED STEEL EDGING TO BE: ACME (14 GA. x 4" WIDE) GALVANIZED STEEL EDGING, WITH ROLLED EDGE AND GALVANIZED STAKES. COLOR TO BE DARK GREEN. USE PERFORATED STEEL EDGING AT BREEZE GRAVEL TRAILS ONLY. SEE PLAN FOR TRAIL LOCATIONS.
17. ALL PLANTS NOT LABELED AS FULFILLING A COUNTY LANDSCAPE REQUIREMENT ARE "EXTRA" PER COUNTY STANDARDS, AND WILL BE INSTALLED AT THE OWNER'S DISCRETION.
18. AND FIELD CHANGES OR DEVIATIONS TO THESE PLANS WITHOUT PRIOR COUNTY APPROVAL OF AN AMENDED SITE DEVELOPMENT PLAN MAY RESULT IN A DELAY OF SINAL APPROVAL AND ISSUANCE OF A CERTIFICATE OF OCCUPANCY.
19. THESE PLANS ARE FOR COUNTY APPROVALS ONLY AND ARE NOT TO BE UTILIZED FOR CONSTRUCTION
20. ALL TREES TO BE STAKED FOR A MINIMUM OF 18 MONTHS. REMOVE STAKING MATERIALS ONCE TREE IS ESTABLISHED, WHICH MAY DEPEND ON TREE SPECIES, MATURITY AND SITE CONDITIONS.
21. TREES SHALL NOT BE LOCATED IN DRAINAGE SWALES, AREAS OR UTILITY EASEMENTS. CONTACT LANDSCAPE ARCHITECT FOR RELOCATION OF PLANTS IN QUESTIONABLE AREAS PRIOR TO INSTALLATION.
22. TREES PLANTED WITHIN THE SIGHT TRIANGLE, BRANCHES MUST BE TRIMMED UP TO 8 FEET. SHRUBS, GRASSES AND OTHER VEGETATION OVER 2 FEET ARE NOT PERMITTED IN THE SIGHT TRIANGLE.



KEY MAP

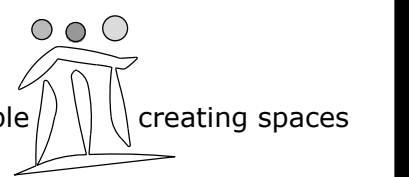
0 200' 400' 800'  
SCALE: 1"=400'-0"  
NORTH

### LANDSCAPE SHEET INDEX

|        |                                  |
|--------|----------------------------------|
| 1      | COVER SHEET                      |
| 2      | FENCING & OVERALL LANDSCAPE PLAN |
| 3      | PLANT SCHEDULE & SEED MIXES      |
| 4 - 10 | LANDSCAPE PLAN                   |
| 11     | LANDSCAPE DETAILS                |

Prepared For  
BEN LOMAND  
MARY SUNG  
3275 COUNTY LINE ROAD  
MONUMENT, CO 80123  
719-332-2607

Land Planning



pcs group inc. www.pcsgroupco.com  
200 kalamath st. denver co 80223  
1.303.531.4905

Engineering

ATWELL LLC

7200 E Orchard Rd., Suite 125  
Greenwood Village, CO 80111  
(866) 708.0500

BEN LOMAND MOUNTAIN VILLAGE  
 Landscape Plans  
 El Paso County, Colorado

Drawn by: PCS Staff  
Checked by: PCS Staff  
Issue Date: 02.09.2026  
Revisions:

Sheet Name

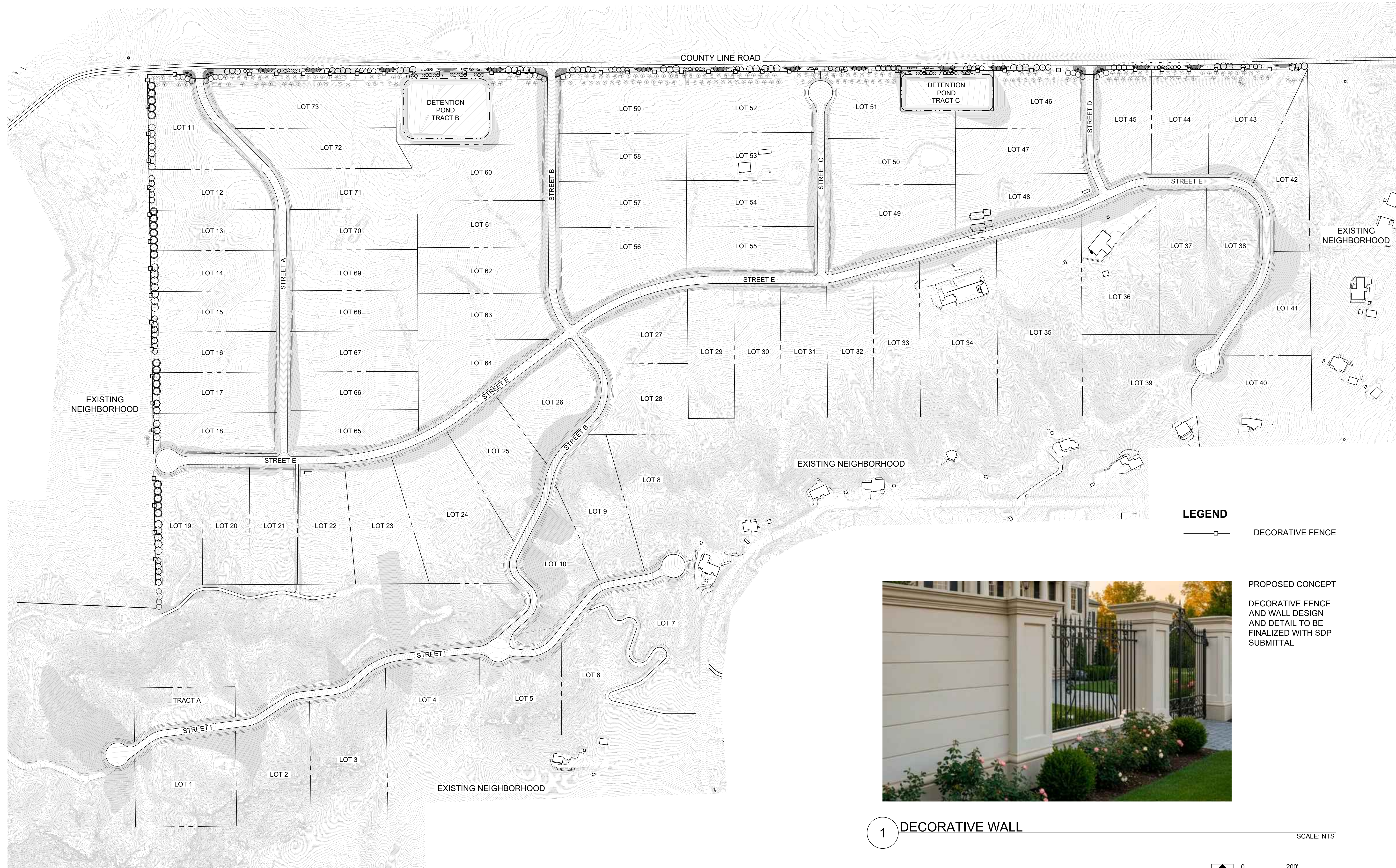
COVER SHEET

Sheet Number

1

# BEN LOMAND MOUNTAIN VILLAGE

## LANDSCAPE SITE PLAN



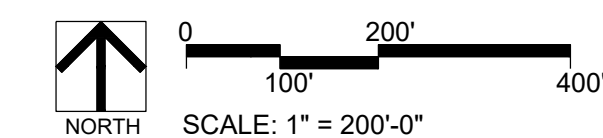
**LEGEND**  
 DECORATIVE FENCE



**PROPOSED CONCEPT**  
 DECORATIVE FENCE AND WALL DESIGN AND DETAIL TO BE FINALIZED WITH SDP SUBMITTAL

1 DECORATIVE WALL

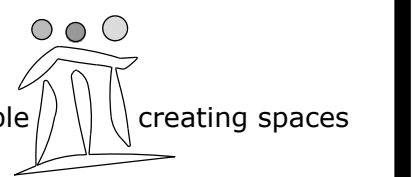
SCALE: NTS



OVERALL LANDSCAPE PLAN

Prepared For  
 BEN LOMAND  
 MARY SUNG  
 3275 COUNTY LINE ROAD  
 MONUMENT, CO 80123  
 719-332-2607

Land Planning



pcs group inc. www.pcsgroupco.com  
 200 kalamath st. denver co 80223  
 1.303.531.4905

Engineering

**ATWELL LLC**

7200 E Orchard Rd., Suite 125  
 Greenwood Village, CO 80111  
 (866) 708.0500

**BEN LOMAND MOUNTAIN VILLAGE**  
 Landscape Plans  
 El Paso County, Colorado

Drawn by: PCS Staff  
 Checked by: PCS Staff  
 Issue Date: 02.09.2026  
 Revisions:

Sheet Name

FENCING & OVERALL  
 LANDSCAPE PLAN

Sheet Number

2

# BEN LOMAND MOUNTAIN VILLAGE

## LANDSCAPE SITE PLAN

### PLANT SCHEDULE

SYMBOL CODE QTY BOTANICAL NAME COMMON NAME ROOT CALIPER/HT. HEIGHT WIDTH IRR ZONE

#### EVERGREEN TREE

|  |     |    |                                       |                                     |       |        |           |         |
|--|-----|----|---------------------------------------|-------------------------------------|-------|--------|-----------|---------|
|  | JSM | 37 | JUNIPERUS SCOPULORUM 'MOONGLOW'       | MOONGLOW JUNIPER                    | B & B | 6' HT. | 20' X 8'  | LOW     |
|  | PIA | 12 | PICEA ABIES                           | NORWAY SPRUCE                       | B & B | 6' HT. | 60' X 40' | LOW-MED |
|  | PPB | 26 | PICEA PUNGENS 'BABY BLUE EYES'        | BABY BLUE EYES COLORADO BLUE SPRUCE | B & B | 6' HT. | 25' X 15' | LOW     |
|  | PIF | 53 | PINUS FLEXILIS 'VANDERWOLF'S PYRAMID' | VANDERWOLF'S PYRAMID LIMBER PINE    | B & B | 6' HT. | 25' X 15' | LOW-MED |
|  | PIH | 22 | PINUS HELDREICHII                     | BOSNIAN PINE                        | B & B | 6' HT. | 60' X 40' | LOW-MED |
|  | PIP | 17 | PINUS PONDEROSA                       | PONDEROSA PINE                      | B & B | 6' HT. | 50'X25'   | LOW     |
|  | PIS | 13 | PINUS SYLVESTRIS                      | SCOTCH PINE                         | B & B | 6' HT. | 40' X 30' | LOW-MED |

#### ORNAMENTAL TREE

|  |     |    |                             |                        |       |          |           |         |
|--|-----|----|-----------------------------|------------------------|-------|----------|-----------|---------|
|  | ACG | 24 | ACER GRANDIDENTATUM         | BIGTOOTH MAPLE         | B & B | 1.5" CAL | 25' X 25' | LOW-MED |
|  | AMA | 34 | AMELANCHIER ALNIFOLIA       | SERVICEBERRY           | B & B | 1.5" CAL | 25' X 10' | LOW-MED |
|  | KOP | 25 | KOELERUTERIA PANICULATA     | GOLDEN RAIN TREE       | B & B | 1.5" CAL | 30' X 30' | LOW     |
|  | PCN | 28 | PRUNUS CERASIFERA 'NEWPORT' | NEWPORT FLOWERING PLUM | B & B | 1.5" CAL | 20' X 20' | LOW-MED |

SYMBOL CODE QTY BOTANICAL NAME COMMON NAME SIZE HEIGHT/WIDTH IRR ZONE SIGNATURE

#### DECIDUOUS SHRUBS

|  |     |     |  |                           |       |           |  |                   |
|--|-----|-----|--|---------------------------|-------|-----------|--|-------------------|
|  | CCD | 105 | CARYOPTERIS X CLANDONENSIS 'DARK KNIGHT' | DARK KNIGHT BLUEBEARD     | 5 GAL | 3' X 3'   |  | LOW               |
|  | CHM | 67  | CHAMAEBATIARIA MILLEFOLIUM               | FERNBUSH                  | 5 GAL | 5' X 5'   |  | LOW F/P SUN       |
|  | CHN | 35  | CHRYSOTHAMNUS NAUSEOSUS                  | RABBITBRUSH               | 5 GAL | 5' X 5'   |  | LOW FULL SUN      |
|  | ENS | 130 | ERICAMERIA NAUSEOSA SPECIOSA             | DWARF BLUE RABBITBRUSH    | 5 GAL | 2' X 2'   |  | LOW               |
|  | FIA | 96  | FORSYTHIA X INTERMEDIA 'ARNOLD'S DWARF'  | DWARF FORSYTHIA           | 5 GAL | 3' X 6'   |  | LOW F/P SUN       |
|  | PBP | 45  | PRUNUS BESSEYI 'P011S' TM                | PAWNEE BUTTES SAND CHERRY | 5 GAL | 1' X 6'   |  | LOW               |
|  | RAG | 42  | RHUS AROMATICA 'GRO-LOW'                 | GRO-LOW FRAGRANT SUMAC    | 5 GAL | 2' X 8'   |  | LOW-MOD SHADE-SUN |
|  | RTA | 44  | RHUS TRILOBATA 'AUTUMN AMBER'            | AUTUMN AMBER SUMAC        | 5 GAL | 1.5' X 6' |  | LOW FULL SUN      |
|  | SBT | 60  | SPIRAEA BETULIFOLIA 'TOR'                | BIRCHLEAF SPIREA          | 5 GAL | 2' X 3'   |  | LOW-MOD FULL SUN  |

#### EVERGREEN SHRUBS

|  |     |     |                                    |                         |       |           |  |              |
|--|-----|-----|------------------------------------|-------------------------|-------|-----------|--|--------------|
|  | ARC | 85  | ARCTOSTAPHYLOS X COLORADOENSIS     | PANCHITO MANZANITA      | 5 GAL | 2' X 3'   |  | LOW F/P SUN  |
|  | ARL | 82  | ARTEMISIA ABROTANUM 'LEPRECHAUN'   | LEPRECHAUN SOUTHERNWOOD | 5 GAL | 3' X 2.5' |  | LOW F/P SUN  |
|  | ATC | 48  | ATRIPLEX CANESCENS                 | FOURWING SALT BUSH      | 5 GAL | 4' X 5'   |  | LOW FULL SUN |
|  | EEQ | 35  | EPHEDRA EQUISETINA                 | BLUESTEM JOINT FIR      | 5 GAL | 5' X 6'   |  | LOW F/P SUN  |
|  | JHB | 66  | JUNIPERUS HORIZONTALIS 'BLUE CHIP' | BLUE CHIP JUNIPER       | 5 GAL | 8" X 7"   |  | LOW FULL SUN |
|  | PMB | 191 | PINUS MONOPHYLLA 'BLUE JAZZ'       | BLUE JAZZ PINE          | 5 GAL | 2' X 2'   |  | LOW F/P SUN  |

#### ORNAMENTAL GRASSES

|  |     |     |                                      |                            |       |         |  |              |
|--|-----|-----|--------------------------------------|----------------------------|-------|---------|--|--------------|
|  | CAO | 80  | CALAMAGROSTIS X ACUTIFLORA 'OVERDAM' | OVERDAM FEATHER REED GRASS | 1 GAL | 3' X 2' |  | LOW          |
|  | PAH | 84  | PANICUM VIRGATUM 'HEAVY METAL'       | BLUE SWITCH GRASS          | 1 GAL | 3' X 2' |  | LOW FULL SUN |
|  | PAS | 167 | PANICUM VIRGATUM 'SHENENDOAH'        | BURGUNDY SWITCH GRASS      | 1 GAL | 3' X 2' |  | LOW FULL SUN |

#### PERENNIALS / GROUNDCOVERS

|  |     |    |                                       |                            |       |         |  |              |
|--|-----|----|---------------------------------------|----------------------------|-------|---------|--|--------------|
|  | SDM | 72 | SALVIA DARCYI X MICROPHYLLA 'PWIN03S' | WINDWALKER® ROYAL RED SAGE | 5 GAL | 4' X 3' |  | LOW FULL SUN |
|--|-----|----|---------------------------------------|----------------------------|-------|---------|--|--------------|

SYMBOL QTY BOTANICAL NAME COMMON NAME

#### GROUND COVERS

|  |           |             |                             |
|--|-----------|-------------|-----------------------------|
|  | 20,918 SF | MULCH, ROCK | TAN 3/4" ANGULAR ROCK MULCH |
|  | 75,495 SF | SEED        | MID GRASS W/ WILDFLOWERS    |

### SEED MIXES

#### NATIVE SEED MIX (NSM) ARKANSAS VALLEY SEED - LOW GROW MIX

| BOTANIC                   | COMMON                       | PERCENT MIX | (LBS / ACRE)<br>PURE LIVE SEED |
|---------------------------|------------------------------|-------------|--------------------------------|
| AGROPYRON CRISTATUM       | CRESTED WHEATGRASS (EPHRAIM) | 30%         | -                              |
| FESTUCA OVINA             | SHEEP FESCUE                 | 25%         | -                              |
| LOLIUM PERENNE            | PERENNIAL RYEGRASS           | 20%         | -                              |
| FESTUCA RUBRA 'COMMUTATA' | CHEWINGS FESCUE              | 15%         | -                              |
| POA COMPRESSA             | CANADA BLUEGRASS (CANNON)    | 10%         | -                              |
| <b>TOTAL PLS</b>          |                              | <b>100%</b> |                                |

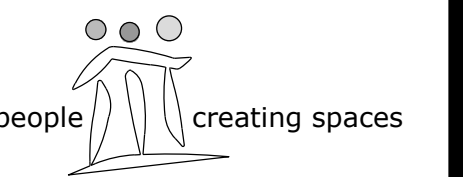
### LANDSCAPE REQUIREMENTS

| STREET NAME      | STREET CLASSIFICATION | LANDSCAPE WIDTH REQ. | LINEAR FOOTAGE | TREE REQ. (1 TREE / 25 LF) | TOTAL TREES PROVIDED | EVERGREEN REQ. (30%) | EVERGREEN PROVIDED |
|------------------|-----------------------|----------------------|----------------|----------------------------|----------------------|----------------------|--------------------|
| COUNTY LINE ROAD | MINOR ARTERIAL        | 20'                  | 4,820 LF       | 193 TREES                  | 193 TREES*           | 58 TREES             | 82 TREES           |

\*DUE TO SIGHT TRIANGLES, UTILITY LOCATIONS AND THE VARIOUS LANDSCAPE WIDTH, SOME OF THE REQUIRED TREES ARE LOCATED BEHIND THE FENCE LINE

Prepared For  
BEN LOMAND  
MARY SUNG  
3275 COUNTY LINE ROAD  
MONUMENT, CO 80123  
719-332-2607

Land Planning



pcs group inc. www.pcsgroupco.com  
200 kalamath st. denver co 80223  
1.303.531.4905

Engineering

ATWELL LLC

7200 E Orchard Rd., Suite 125  
Greenwood Village, CO 80111  
(866) 708.0500

BEN LOMAND MOUNTAIN VILLAGE

Landscape Plans  
El Paso County, Colorado

Drawn by: PCS Staff  
Checked by: PCS Staff  
Issue Date: 02.09.2026  
Revisions:

Sheet Name

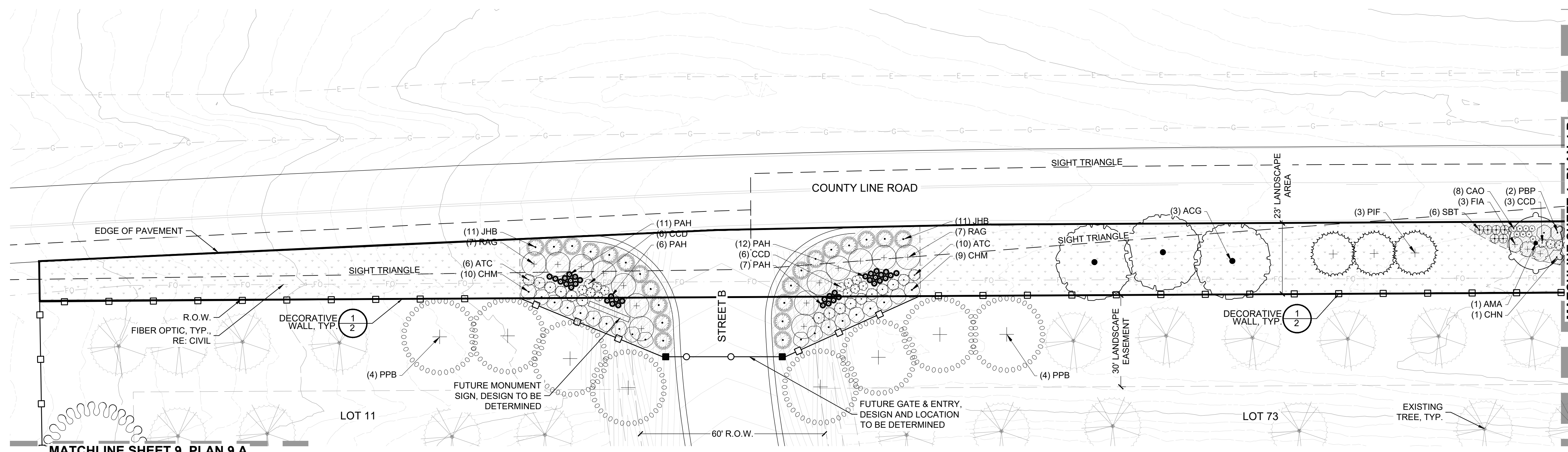
PLANT SCHEDULE &  
SEED MIXES

Sheet Number

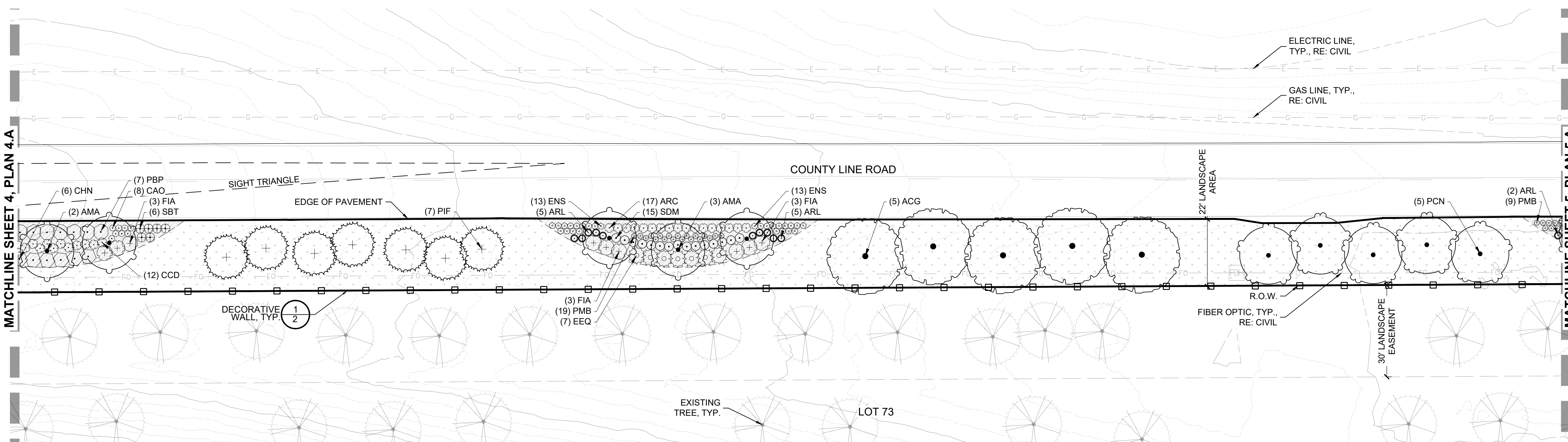
3

# BEN LOMAND MOUNTAIN VILLAGE

## LANDSCAPE SITE PLAN



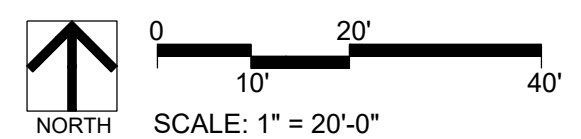
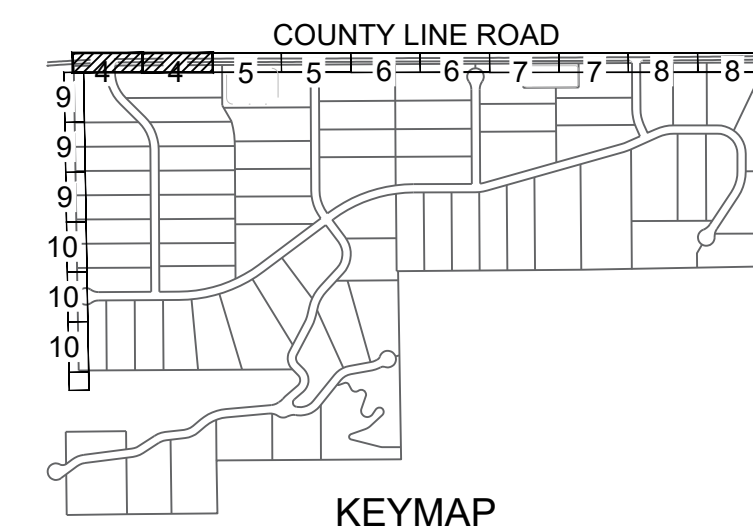
LANDSCAPE PLAN 4.A



LANDSCAPE PLAN 4.B

### PLANT LEGEND

| SYMBOL                           | CODE | COMMON NAME                         |
|----------------------------------|------|-------------------------------------|
| (Circle with cross)              |      | EXISTING TREE                       |
| <b>EVERGREEN TREE</b>            |      |                                     |
| (Circle with dot)                | PPB  | BABY BLUE EYES COLORADO BLUE SPRUCE |
| (Circle with vertical lines)     | PIH  | BOSNIAN PINE                        |
| (Circle with horizontal lines)   | JSM  | MOONGLOW JUNIPER                    |
| (Circle with diagonal lines)     | PIA  | NORWAY SPRUCE                       |
| (Circle with wavy lines)         | PIP  | PONDEROSA PINE                      |
| (Circle with starburst)          | PIS  | SCOTCH PINE                         |
| (Circle with cross-hatch)        | PIF  | VANDERWOLF'S PYRAMID LIMBER PINE    |
| <b>ORNAMENTAL TREE</b>           |      |                                     |
| (Circle with vertical lines)     | ACG  | BIGTOOTH MAPLE                      |
| (Circle with horizontal lines)   | KOP  | GOLDEN RAIN TREE                    |
| (Circle with diagonal lines)     | PCN  | NEWPORT FLOWERING PLUM              |
| (Circle with wavy lines)         | AMA  | SERVICEBERRY                        |
| (Circle with cross-hatch)        | AMA  | (1) CHN                             |
| <b>DECIDUOUS SHRUBS</b>          |      |                                     |
| (Circle with dot)                | RTA  | AUTUMN AMBER SUMAC                  |
| (Circle with vertical lines)     | SBT  | BIRCHLEAF SPIREA                    |
| (Circle with horizontal lines)   | CCD  | DARK KNIGHT BLUEBEARD               |
| (Circle with diagonal lines)     | ENS  | DWARF BLUE RABBITBRUSH              |
| (Circle with wavy lines)         | FIA  | DWARF FORSYTHIA                     |
| (Circle with cross-hatch)        | CHM  | FERNBUSH                            |
| (Circle with starburst)          | RAG  | GRO-LOW FRAGRANT SUMAC              |
| (Circle with cross)              | PBP  | PAWNEE BUTTES SAND CHERRY           |
| (Circle with wavy lines)         | CHN  | RABBITBRUSH                         |
| <b>EVERGREEN SHRUBS</b>          |      |                                     |
| (Circle with dot)                | JHB  | BLUE CHIP JUNIPER                   |
| (Circle with vertical lines)     | PMB  | BLUE JAZZ PINON PINE                |
| (Circle with horizontal lines)   | EEQ  | BLUESTEM JOINT FIR                  |
| (Circle with diagonal lines)     | ATC  | FOURWING SALTBRUSH                  |
| (Circle with wavy lines)         | ARL  | LEPRECHAUN SOUTHERNWOOD             |
| (Circle with cross-hatch)        | ARC  | PANCHITO MANZANITA                  |
| <b>ORNAMENTAL GRASSES</b>        |      |                                     |
| (Circle with vertical lines)     | PAH  | BLUE SWITCH GRASS                   |
| (Circle with horizontal lines)   | PAS  | BURGUNDY SWITCH GRASS               |
| (Circle with diagonal lines)     | CAO  | OVERDAM FEATHER REED GRASS          |
| <b>PERENNIALS / GROUNDCOVERS</b> |      |                                     |
| (Circle with wavy lines)         | SDM  | WINDWALKER® ROYAL RED SAGE          |
| <b>GROUND COVERS</b>             |      |                                     |
| (Stippled pattern)               |      | MID GRASS W/ WILDFLOWERS            |
| (Cross-hatch pattern)            |      | TAN 3/4" ANGULAR ROCK MULCH         |
| (Dashed line)                    |      | EDGER                               |



Prepared For  
**BEN LOMAND**  
 MARY SUNG  
 3275 COUNTY LINE ROAD  
 MONUMENT, CO 80123  
 719-332-2607

Land Planning  
  
 people creating spaces  
 pcs group inc. www.pcsgroupco.com  
 200 kalamath st. denver co 80223  
 1.303.531.4905

Engineering  
**ATWELL LLC**  
 7200 E Orchard Rd., Suite 125  
 Greenwood Village, CO 80111  
 (866) 708.0500

**BEN LOMAND MOUNTAIN VILLAGE**  
 Landscape Plans  
 El Paso County, Colorado

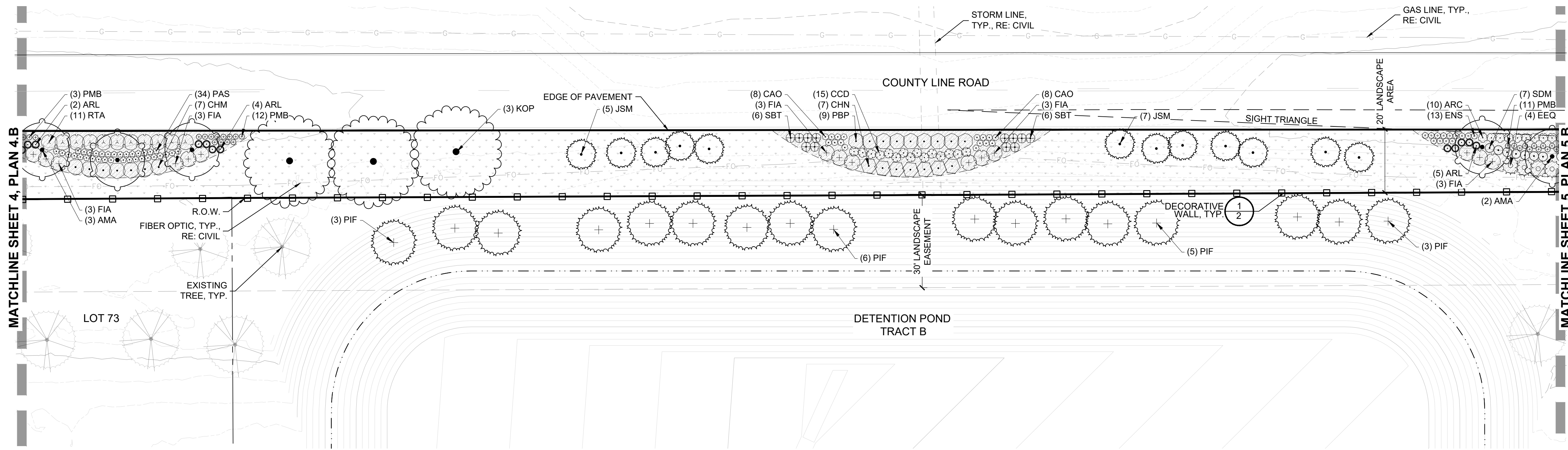
Drawn by: **PCS Staff**  
 Checked by: **PCS Staff**  
 Issue Date: **02.09.2026**  
 Revisions:

Sheet Name  
**LANDSCAPE PLAN**

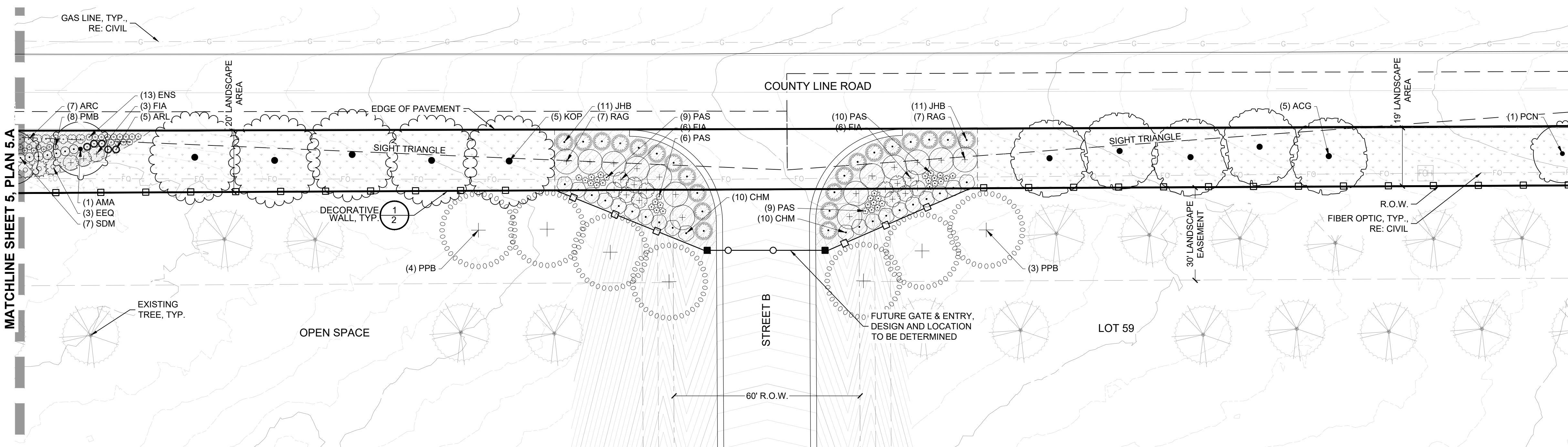
Sheet Number  
**4**

# BEN LOMAND MOUNTAIN VILLAGE

## LANDSCAPE SITE PLAN



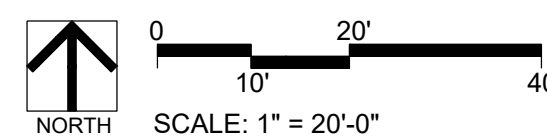
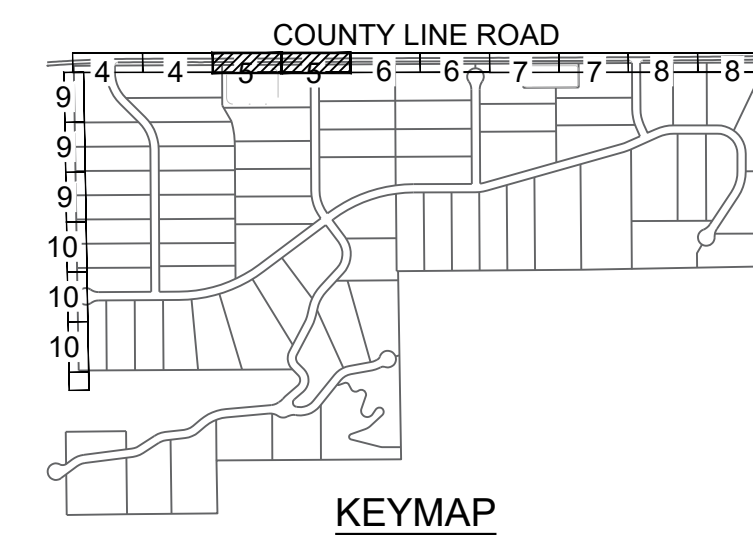
LANDSCAPE PLAN 5.A



LANDSCAPE PLAN 5.B

### PLANT LEGEND

| SYMBOL                           | CODE | COMMON NAME                         |
|----------------------------------|------|-------------------------------------|
| (Circle with dot)                |      | EXISTING TREE                       |
| <b>EVERGREEN TREE</b>            |      |                                     |
| (Square)                         | PPB  | BABY BLUE EYES COLORADO BLUE SPRUCE |
| (Circle with vertical lines)     | PIH  | BOSNIAN PINE                        |
| (Circle with horizontal lines)   | JSM  | MOONGLOW JUNIPER                    |
| (Circle with diagonal lines)     | PIA  | NORWAY SPRUCE                       |
| (Circle with cross)              | PIP  | PONDEROSA PINE                      |
| (Circle with dots)               | PIS  | SCOTCH PINE                         |
| (Circle with triangle)           | PIF  | VANDERWOLF'S PYRAMID LIMBER PINE    |
| <b>ORNAMENTAL TREE</b>           |      |                                     |
| (Circle with horizontal lines)   | ACG  | BIGTOOTH MAPLE                      |
| (Circle with vertical lines)     | KOP  | GOLDEN RAIN TREE                    |
| (Circle with diagonal lines)     | PCN  | NEWPORT FLOWERING PLUM              |
| (Circle with cross)              | AMA  | SERVICEBERRY                        |
| <b>DECIDUOUS SHRUBS</b>          |      |                                     |
| (Circle with dot)                | RTA  | AUTUMN AMBER SUMAC                  |
| (Circle with vertical lines)     | SBT  | BIRCHLEAF SPIREA                    |
| (Circle with horizontal lines)   | CCD  | DARK KNIGHT BLUEBEARD               |
| (Circle with diagonal lines)     | ENS  | DWARF BLUE RABBITBRUSH              |
| (Circle with cross)              | FIA  | DWARF FORSYTHIA                     |
| (Circle with dots)               | CHM  | FERNBUSH                            |
| (Circle with triangle)           | RAG  | GRO-LOW FRAGRANT SUMAC              |
| (Circle with square)             | PBP  | PAWNEE BUTTES SAND CHERRY           |
| (Circle with circle)             | CHN  | RABBITBRUSH                         |
| <b>EVERGREEN SHRUBS</b>          |      |                                     |
| (Circle with dot)                | JHB  | BLUE CHIP JUNIPER                   |
| (Circle with vertical lines)     | PMB  | BLUE JAZZ PINON PINE                |
| (Circle with horizontal lines)   | EEQ  | BLUESTEM JOINT FIR                  |
| (Circle with diagonal lines)     | ATC  | FOURWING SALTBUSH                   |
| (Circle with cross)              | ARL  | LEPRECHAUN SOUTHERNWOOD             |
| (Circle with dots)               | ARC  | PANCHITO MANZANITA                  |
| <b>ORNAMENTAL GRASSES</b>        |      |                                     |
| (Circle with vertical lines)     | PAH  | BLUE SWITCH GRASS                   |
| (Circle with horizontal lines)   | PAS  | BURGUNDY SWITCH GRASS               |
| (Circle with diagonal lines)     | CAO  | OVERDAM FEATHER REED GRASS          |
| <b>PERENNIALS / GROUNDCOVERS</b> |      |                                     |
| (Circle with dot)                | SDM  | WINDWALKER® ROYAL RED SAGE          |
| <b>GROUND COVERS</b>             |      |                                     |
| (Stippled pattern)               |      | MID GRASS W/ WILDFLOWERS            |
| (Cross-hatched pattern)          |      | TAN 3/4" ANGULAR ROCK MULCH         |
| (Dashed line)                    |      | EDGER                               |



Prepared For  
**BEN LOMAND**  
 MARY SUNG  
 3275 COUNTY LINE ROAD  
 MONUMENT, CO 80123  
 719-332-2607

Land Planning  
  
 pcs group inc. www.pcsgroupco.com  
 200 kalamath st. denver co 80223  
 1.303.531.4905

Engineering  
**ATWELL LLC**  
 7200 E Orchard Rd., Suite 125  
 Greenwood Village, CO 80111  
 (866) 708.0500

**BEN LOMAND MOUNTAIN VILLAGE**  
 Landscape Plans  
 El Paso County, Colorado

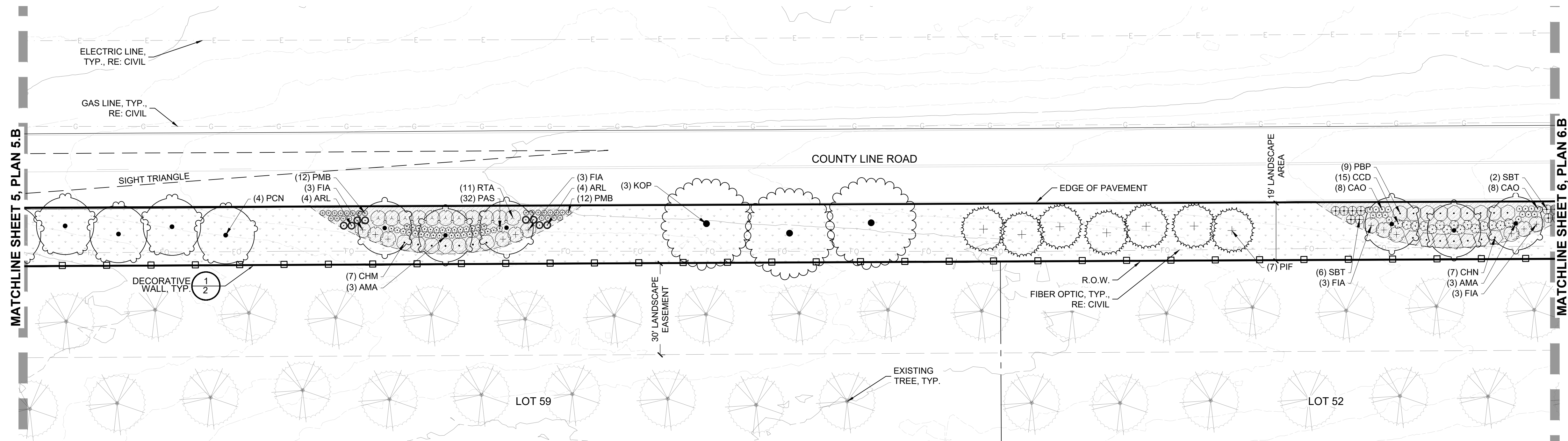
Drawn by: **PCS Staff**  
 Checked by: **PCS Staff**  
 Issue Date: **02.09.2026**  
 Revisions:

Sheet Name  
**LANDSCAPE PLAN**

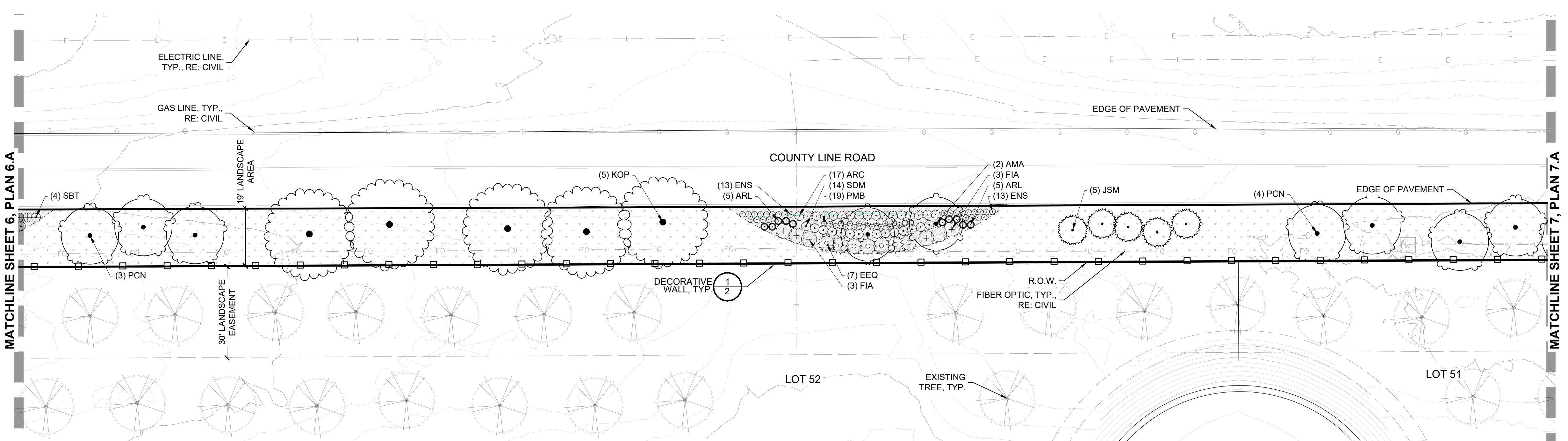
Sheet Number  
**5**

# BEN LOMAND MOUNTAIN VILLAGE

## LANDSCAPE SITE PLAN



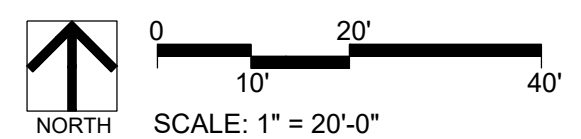
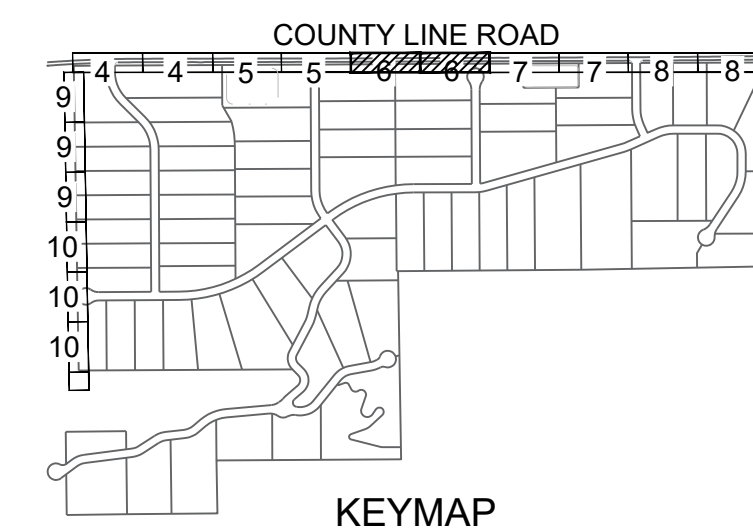
LANDSCAPE PLAN 6.A



LANDSCAPE PLAN 6.B

### PLANT LEGEND

| SYMBOL                           | CODE | COMMON NAME                         |
|----------------------------------|------|-------------------------------------|
| (Circle with dot)                |      | EXISTING TREE                       |
| <b>EVERGREEN TREE</b>            |      |                                     |
| (Square)                         | PPB  | BABY BLUE EYES COLORADO BLUE SPRUCE |
| (Circle with vertical lines)     | PIH  | BOSNIAN PINE                        |
| (Circle with horizontal lines)   | JSM  | MOONGLOW JUNIPER                    |
| (Circle with diagonal lines)     | PIA  | NORWAY SPRUCE                       |
| (Circle with cross-hatch)        | PIP  | PONDEROSA PINE                      |
| (Circle with wavy lines)         | PIS  | SCOTCH PINE                         |
| (Circle with concentric circles) | PIF  | VANDERWOLF'S PYRAMID LIMBER PINE    |
| <b>ORNAMENTAL TREE</b>           |      |                                     |
| (Circle with radiating lines)    | ACG  | BIGTOOTH MAPLE                      |
| (Circle with vertical lines)     | KOP  | GOLDEN RAIN TREE                    |
| (Circle with horizontal lines)   | PCN  | NEWPORT FLOWERING PLUM              |
| (Circle with diagonal lines)     | AMA  | SERVICEBERRY                        |
| <b>DECIDUOUS SHRUBS</b>          |      |                                     |
| (Circle with radiating lines)    | RTA  | AUTUMN AMBER SUMAC                  |
| (Circle with vertical lines)     | SBT  | BIRCHLEAF SPIREA                    |
| (Circle with horizontal lines)   | CCD  | DARK KNIGHT BLUEBEARD               |
| (Circle with diagonal lines)     | ENS  | DWARF BLUE RABBITBRUSH              |
| (Circle with cross-hatch)        | FIA  | DWARF FORSYTHIA                     |
| (Circle with wavy lines)         | CHM  | FERNBUSH                            |
| (Circle with concentric circles) | RAG  | GRO-LOW FRAGRANT SUMAC              |
| (Circle with radiating lines)    | PBP  | PAWNEE BUTTES SAND CHERRY           |
| (Circle with vertical lines)     | CHN  | RABBITBRUSH                         |
| <b>EVERGREEN SHRUBS</b>          |      |                                     |
| (Circle with radiating lines)    | JHB  | BLUE CHIP JUNIPER                   |
| (Circle with vertical lines)     | PMB  | BLUE JAZZ PINON PINE                |
| (Circle with horizontal lines)   | EEQ  | BLUESTEM JOINT FIR                  |
| (Circle with diagonal lines)     | ATC  | FOURWING SALTBUCH                   |
| (Circle with cross-hatch)        | ARL  | LEPRECHAUN SOUTHERNWOOD             |
| (Circle with wavy lines)         | ARC  | PANCHITO MANZANITA                  |
| <b>ORNAMENTAL GRASSES</b>        |      |                                     |
| (Circle with radiating lines)    | PAH  | BLUE SWITCH GRASS                   |
| (Circle with vertical lines)     | PAS  | BURGUNDY SWITCH GRASS               |
| (Circle with horizontal lines)   | CAO  | OVERDAM FEATHER REED GRASS          |
| <b>PERENNIALS / GROUNDCOVERS</b> |      |                                     |
| (Circle with radiating lines)    | SDM  | WINDWALKER® ROYAL RED SAGE          |
| <b>GROUND COVERS</b>             |      |                                     |
| (Stippled pattern)               |      | MID GRASS W/ WILDFLOWERS            |
| (Cross-hatch pattern)            |      | TAN 3/4" ANGULAR ROCK MULCH         |
| (Dashed line)                    |      | EDGER                               |



Prepared For  
**BEN LOMAND**  
 MARY SUNG  
 3275 COUNTY LINE ROAD  
 MONUMENT, CO 80123  
 719-332-2607

Land Planning  
  
 pcs group inc. www.pcsgroupco.com  
 200 katamoh st. denver co 80223  
 1.303.531.4905

Engineering  
**ATWELL LLC**  
 7200 E Orchard Rd., Suite 125  
 Greenwood Village, CO 80111  
 (866) 708.0500

**BEN LOMAND MOUNTAIN VILLAGE**  
 Landscape Plans  
 El Paso County, Colorado

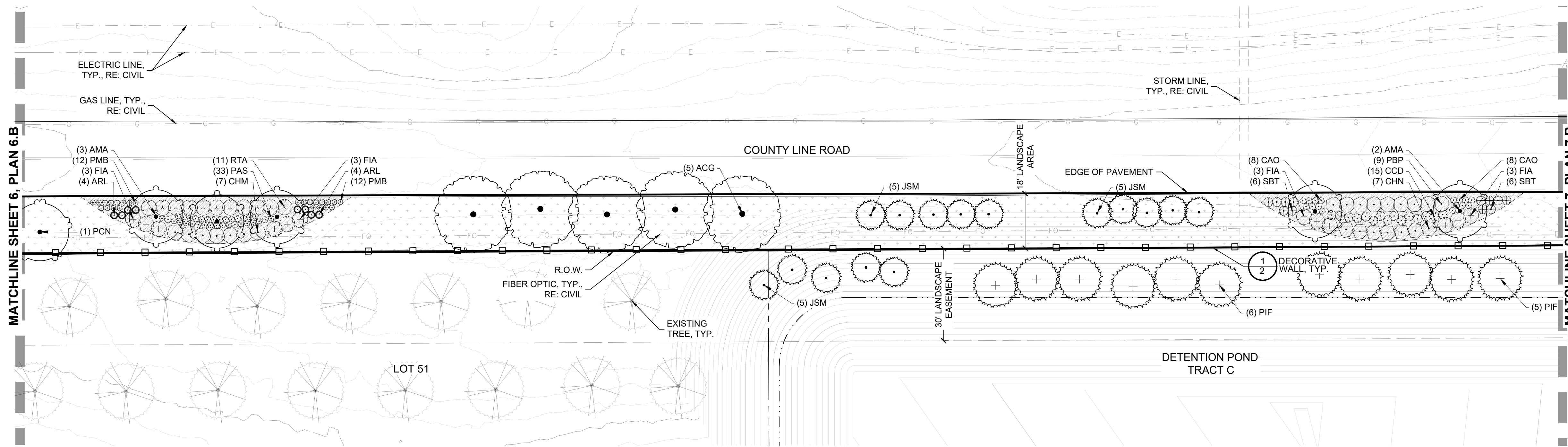
Drawn by: **PCS Staff**  
 Checked by: **PCS Staff**  
 Issue Date: **02.09.2026**  
 Revisions:

Sheet Name  
**LANDSCAPE PLAN**

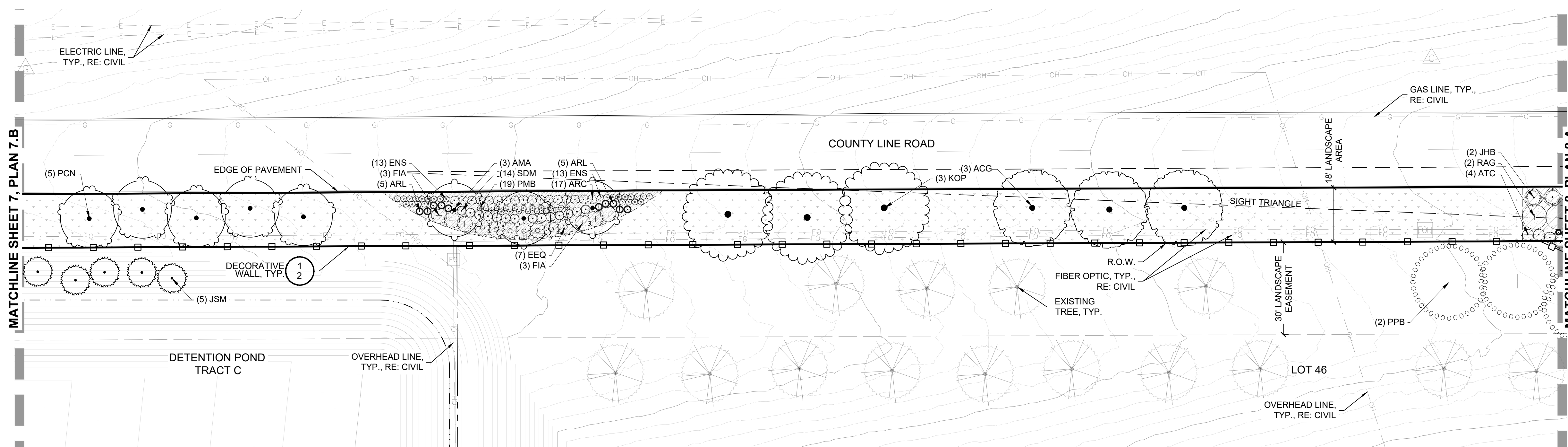
Sheet Number  
**6**

# BEN LOMAND MOUNTAIN VILLAGE

## LANDSCAPE SITE PLAN



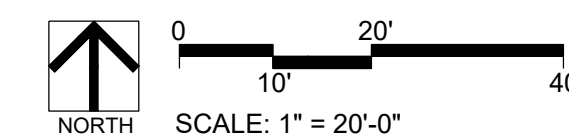
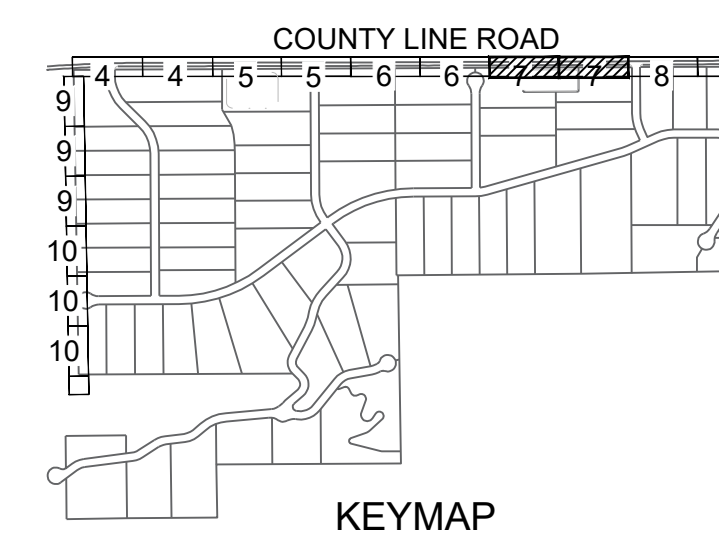
LANDSCAPE PLAN 7.A



LANDSCAPE PLAN 7.B

### PLANT LEGEND

| SYMBOL                                 | CODE | COMMON NAME                         |
|--|------|-------------------------------------|
| (Circle with dot)                      |      | EXISTING TREE                       |
| <b>EVERGREEN TREE</b>                  |      |                                     |
| (Square)                               | PPB  | BABY BLUE EYES COLORADO BLUE SPRUCE |
| (Circle with vertical lines)           | PIH  | BOSNIAN PINE                        |
| (Circle with horizontal lines)         | JSM  | MOONGLOW JUNIPER                    |
| (Circle with diagonal lines)           | PIA  | NORWAY SPRUCE                       |
| (Circle with cross-hatch)              | PIP  | PONDEROSA PINE                      |
| (Circle with wavy lines)               | PIS  | SCOTCH PINE                         |
| (Circle with vertical lines and dot)   | PIF  | VANDERWOLF'S PYRAMID LIMBER PINE    |
| <b>ORNAMENTAL TREE</b>                 |      |                                     |
| (Circle with horizontal lines and dot) | ACG  | BIGTOOTH MAPLE                      |
| (Circle with vertical lines and dot)   | KOP  | GOLDEN RAIN TREE                    |
| (Circle with diagonal lines and dot)   | PCN  | NEWPORT FLOWERING PLUM              |
| (Circle with wavy lines and dot)       | AMA  | SERVICEBERRY                        |
| <b>DECIDUOUS SHRUBS</b>                |      |                                     |
| (Circle with horizontal lines)         | RTA  | AUTUMN AMBER SUMAC                  |
| (Circle with vertical lines)           | SBT  | BIRCHLEAF SPIREA                    |
| (Circle with diagonal lines)           | CCD  | DARK KNIGHT BLUEBEARD               |
| (Circle with cross-hatch)              | ENS  | DWARF BLUE RABBITBRUSH              |
| (Circle with wavy lines)               | FIA  | DWARF FORSYTHIA                     |
| (Circle with vertical lines)           | CHM  | FERNBUSH                            |
| (Circle with diagonal lines)           | RAG  | GRO-LOW FRAGRANT SUMAC              |
| (Circle with wavy lines)               | PBP  | PAWNEE BUTTES SAND CHERRY           |
| (Circle with vertical lines)           | CHN  | RABBITBRUSH                         |
| <b>EVERGREEN SHRUBS</b>                |      |                                     |
| (Circle with horizontal lines)         | JHB  | BLUE CHIP JUNIPER                   |
| (Circle with vertical lines)           | PMB  | BLUE JAZZ PINON PINE                |
| (Circle with diagonal lines)           | EEQ  | BLUESTEM JOINT FIR                  |
| (Circle with cross-hatch)              | ATC  | FOURWING SALTBRUSH                  |
| (Circle with wavy lines)               | ARL  | LEPRECHAUN SOUTHERNWOOD             |
| (Circle with vertical lines)           | ARC  | PANCHITO MANZANITA                  |
| <b>ORNAMENTAL GRASSES</b>              |      |                                     |
| (Circle with horizontal lines)         | PAH  | BLUE SWITCH GRASS                   |
| (Circle with vertical lines)           | PAS  | BURGUNDY SWITCH GRASS               |
| (Circle with diagonal lines)           | CAO  | OVERDAM FEATHER REED GRASS          |
| <b>PERENNIALS / GROUNDCOVERS</b>       |      |                                     |
| (Circle with horizontal lines)         | SDM  | WINDWALKER® ROYAL RED SAGE          |
| <b>GROUND COVERS</b>                   |      |                                     |
| (Stippled pattern)                     |      | MID GRASS W/ WILDFLOWERS            |
| (Cross-hatch pattern)                  |      | TAN 3/4" ANGULAR ROCK MULCH         |
| (Dotted pattern)                       |      | EDGER                               |



Prepared For  
BEN LOMAND  
MARY SUNG  
3275 COUNTY LINE ROAD  
MONUMENT, CO 80123  
719-332-2607

Land Planning  
people creating spaces  
pcs group inc. www.pcsgroupco.com  
200 katamoh st. denver co 80223  
1.303.531.4905

Engineering  
**ATWELL LLC**  
7200 E Orchard Rd., Suite 125  
Greenwood Village, CO 80111  
(866) 708.0500

**BEN LOMAND MOUNTAIN VILLAGE**  
Landscape Plans  
El Paso County, Colorado

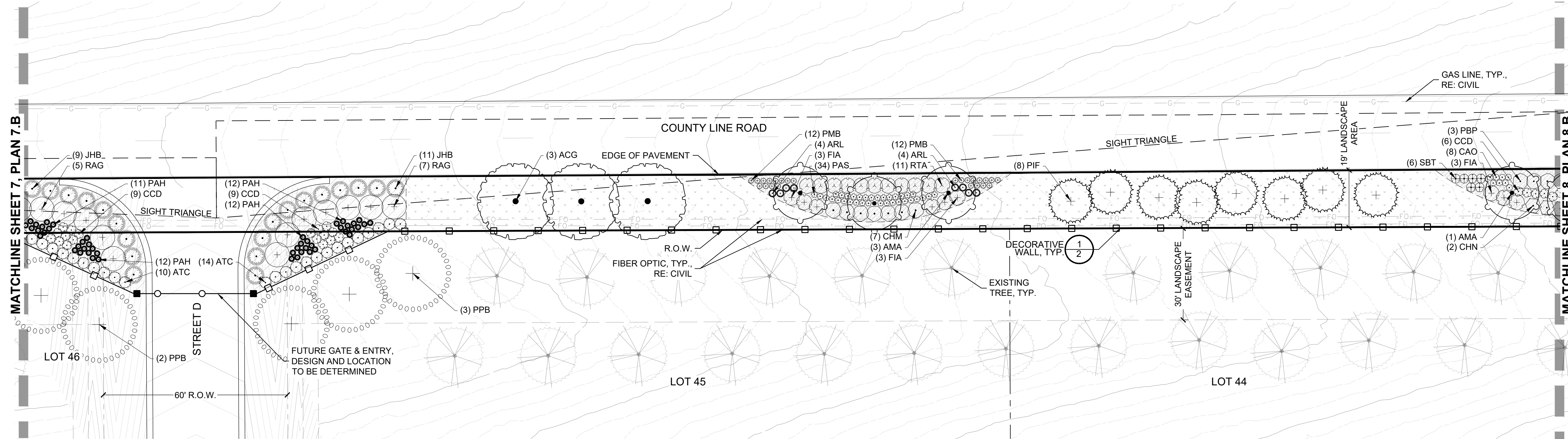
Drawn by: PCS Staff  
Checked by: PCS Staff  
Issue Date: 02.09.2026  
Revisions:

Sheet Name  
**LANDSCAPE PLAN**

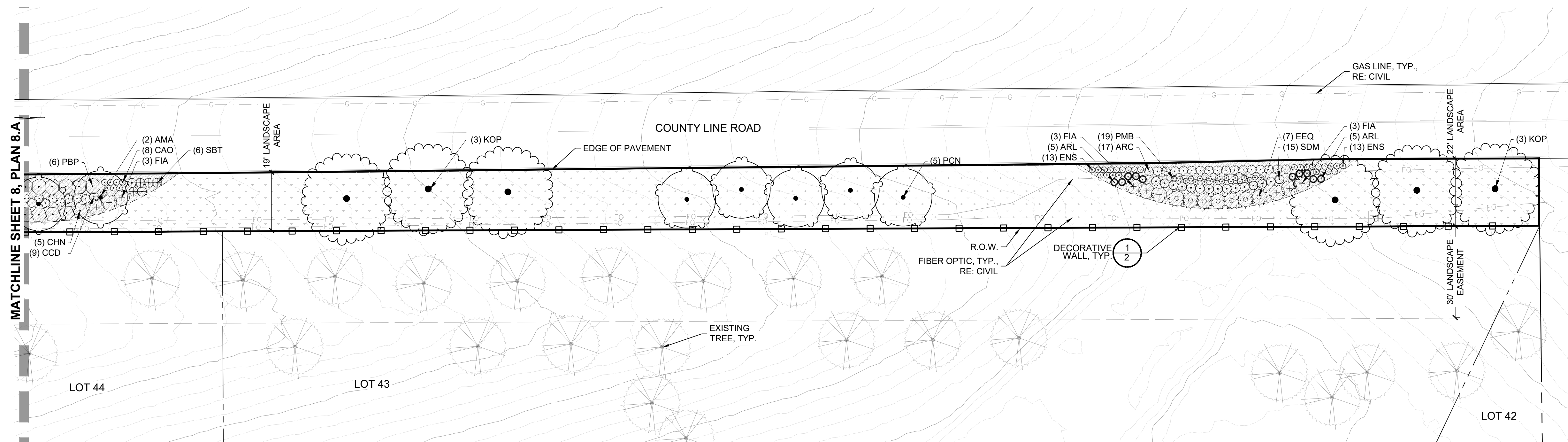
Sheet Number  
**7**

# BEN LOMAND MOUNTAIN VILLAGE

## LANDSCAPE SITE PLAN



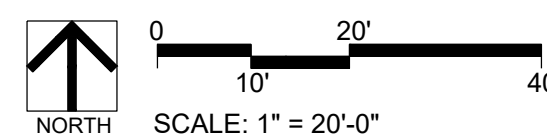
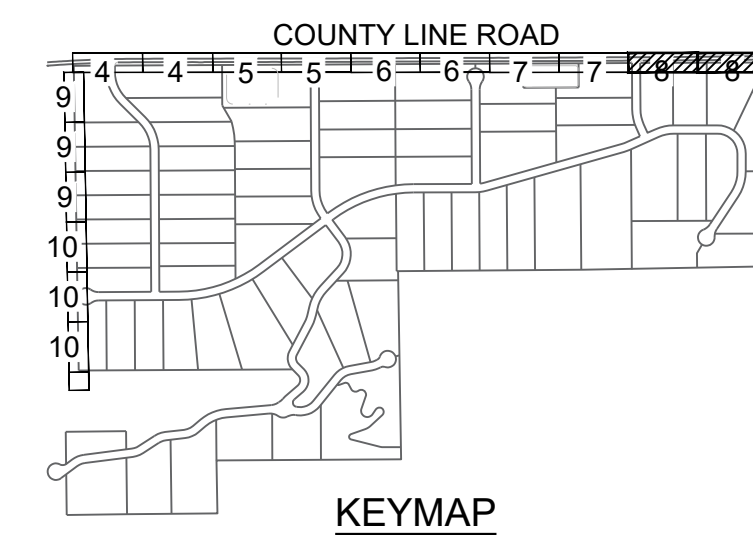
LANDSCAPE PLAN 8.A



LANDSCAPE PLAN 8.B

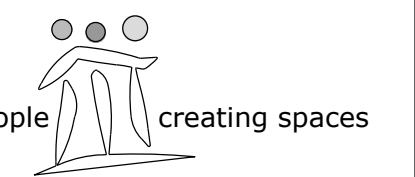
### PLANT LEGEND

| SYMBOL                           | CODE | COMMON NAME                         |
|----------------------------------|------|-------------------------------------|
| (Circle with cross)              |      | EXISTING TREE                       |
| <b>EVERGREEN TREE</b>            |      |                                     |
| (Circle with dot)                | PPB  | BABY BLUE EYES COLORADO BLUE SPRUCE |
| (Circle with vertical lines)     | PIH  | BOSNIAN PINE                        |
| (Circle with horizontal lines)   | JSM  | MOONGLOW JUNIPER                    |
| (Circle with diagonal lines)     | PIA  | NORWAY SPRUCE                       |
| (Circle with wavy lines)         | PIP  | PONDEROSA PINE                      |
| (Circle with zigzag lines)       | PIS  | SCOTCH PINE                         |
| (Circle with concentric circles) | PIF  | VANDERWOLF'S PYRAMID LIMBER PINE    |
| <b>ORNAMENTAL TREE</b>           |      |                                     |
| (Circle with vertical lines)     | ACG  | BIGTOOTH MAPLE                      |
| (Circle with horizontal lines)   | KOP  | GOLDEN RAIN TREE                    |
| (Circle with diagonal lines)     | PCN  | NEWPORT FLOWERING PLUM              |
| (Circle with wavy lines)         | AMA  | SERVICEBERRY                        |
| <b>DECIDUOUS SHRUBS</b>          |      |                                     |
| (Circle with cross)              | RTA  | AUTUMN AMBER SUMAC                  |
| (Circle with dot)                | SBT  | BIRCHLEAF SPIREA                    |
| (Circle with vertical lines)     | CCD  | DARK KNIGHT BLUEBEARD               |
| (Circle with horizontal lines)   | ENS  | DWARF BLUE RABBITBRUSH              |
| (Circle with diagonal lines)     | FIA  | DWARF FORSYTHIA                     |
| (Circle with wavy lines)         | CHM  | FERNBUSH                            |
| (Circle with zigzag lines)       | RAG  | GRO-LOW FRAGRANT SUMAC              |
| (Circle with concentric circles) | PBP  | PAWNEE BUTTES SAND CHERRY           |
| (Circle with cross)              | CHN  | RABBITBRUSH                         |
| <b>EVERGREEN SHRUBS</b>          |      |                                     |
| (Circle with dot)                | JHB  | BLUE CHIP JUNIPER                   |
| (Circle with vertical lines)     | PMB  | BLUE JAZZ PINON PINE                |
| (Circle with horizontal lines)   | EEQ  | BLUESTEM JOINT FIR                  |
| (Circle with diagonal lines)     | ATC  | FOURWING SALTBRUSH                  |
| (Circle with wavy lines)         | ARL  | LEPRECHAUN SOUTHERNWOOD             |
| (Circle with zigzag lines)       | ARC  | PANCHITO MANZANITA                  |
| <b>ORNAMENTAL GRASSES</b>        |      |                                     |
| (Circle with cross)              | PAH  | BLUE SWITCH GRASS                   |
| (Circle with dot)                | PAS  | BURGUNDY SWITCH GRASS               |
| (Circle with vertical lines)     | CAO  | OVERDAM FEATHER REED GRASS          |
| <b>PERENNIALS / GROUNDCOVERS</b> |      |                                     |
| (Circle with horizontal lines)   | SDM  | WINDWALKER® ROYAL RED SAGE          |
| <b>GROUND COVERS</b>             |      |                                     |
| (Stippled pattern)               |      | MID GRASS W/ WILDFLOWERS            |
| (Cross-hatched pattern)          |      | TAN 3/4" ANGULAR ROCK MULCH         |
| (Dashed line)                    |      | EDGER                               |



Prepared For  
 BEN LOMAND  
 MARY SUNG  
 3275 COUNTY LINE ROAD  
 MONUMENT, CO 80123  
 719-332-2607

Land Planning



pcs group inc. www.pcsgroupco.com  
 200 kalamath st. denver co 80223  
 1.303.531.4905

Engineering

ATWELL LLC

7200 E Orchard Rd., Suite 125  
 Greenwood Village, CO 80111  
 (866) 708.0500

BEN LOMAND MOUNTAIN VILLAGE  
 Landscape Plans  
 El Paso County, Colorado

Drawn by: PCS Staff  
 Checked by: PCS Staff  
 Issue Date: 02.09.2026  
 Revisions:

Sheet Name

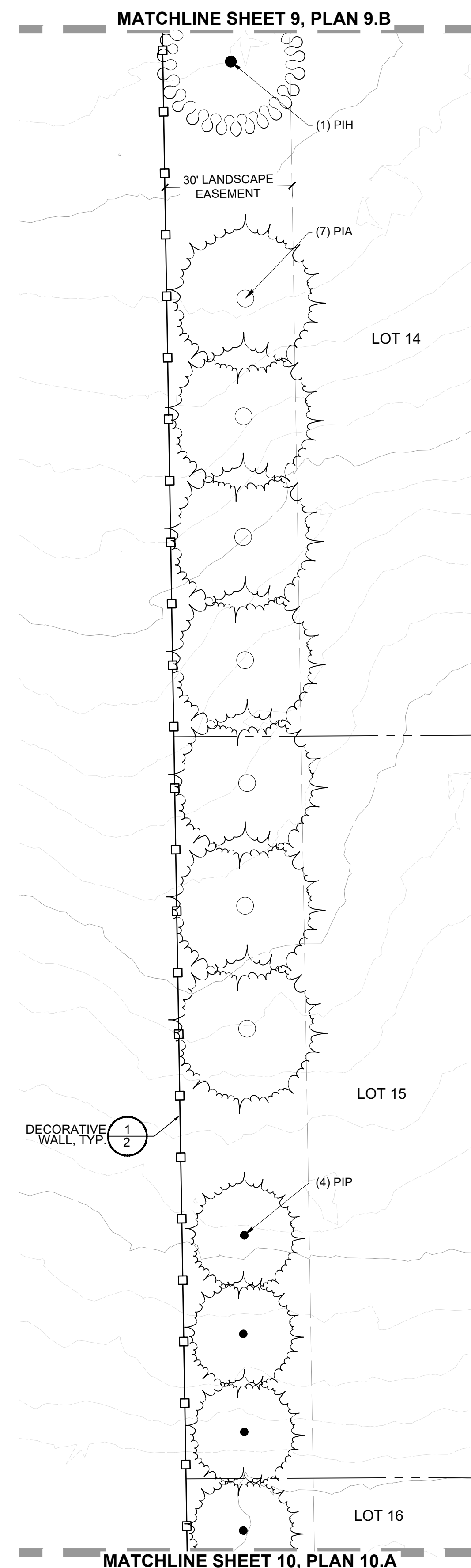
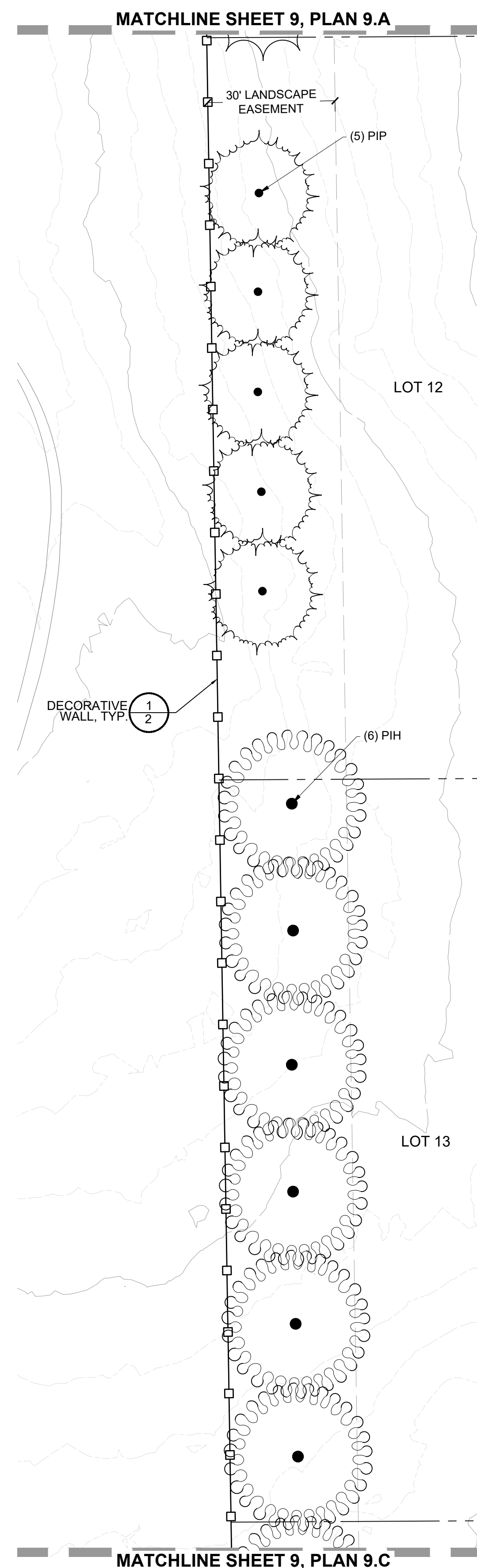
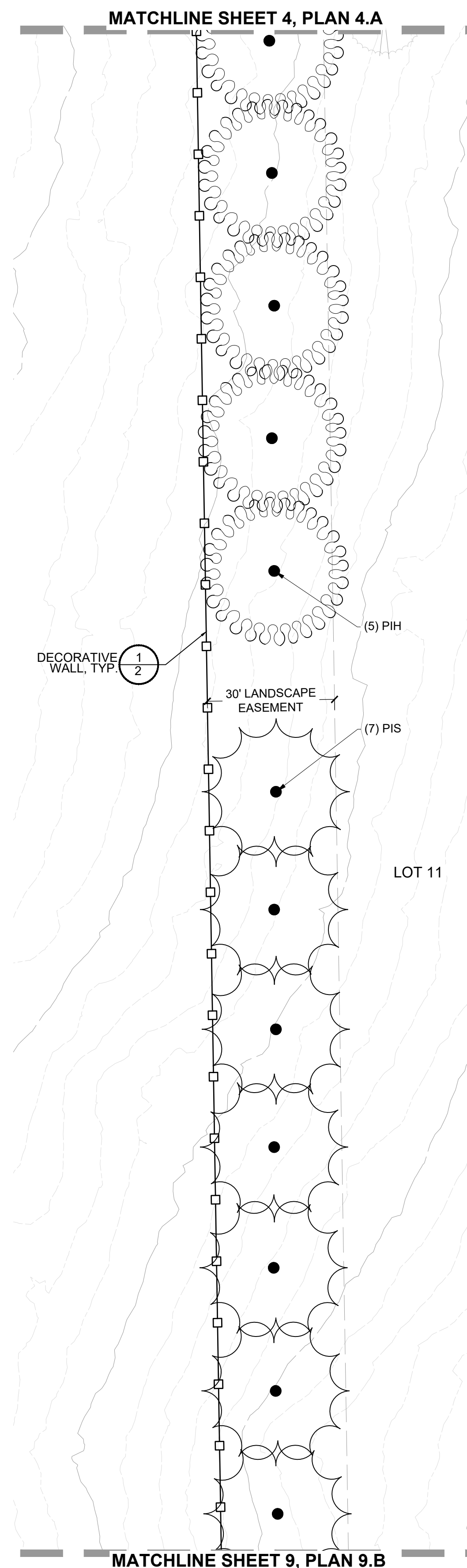
LANDSCAPE PLAN

Sheet Number

8

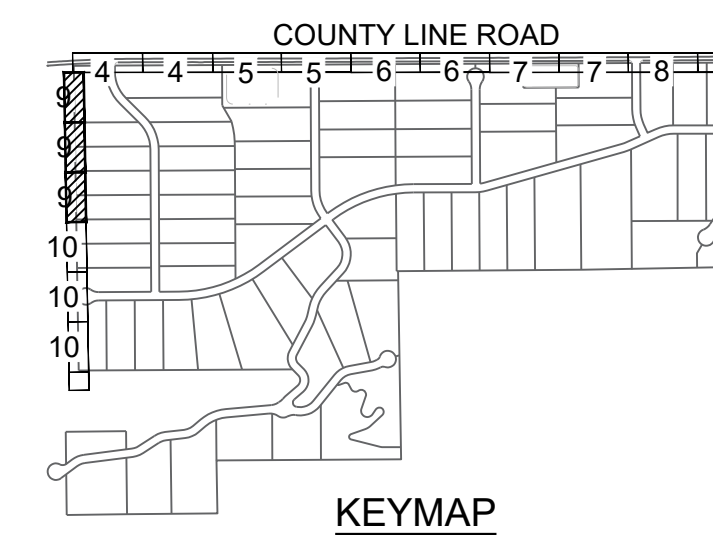
# BEN LOMAND MOUNTAIN VILLAGE

## LANDSCAPE SITE PLAN



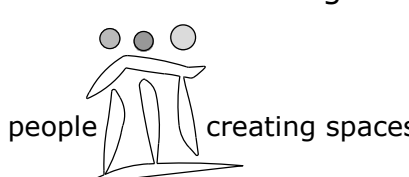
### PLANT LEGEND

| SYMBOL                           | CODE | COMMON NAME                         |
|----------------------------------|------|-------------------------------------|
| (Circle with dot)                |      | EXISTING TREE                       |
| <b>EVERGREEN TREE</b>            |      |                                     |
| (Square)                         | PPB  | BABY BLUE EYES COLORADO BLUE SPRUCE |
| (Circle with dot)                | PIH  | BOSNIAN PINE                        |
| (Circle with dot)                | JSM  | MOONGLOW JUNIPER                    |
| (Circle with dot)                | PIA  | NORWAY SPRUCE                       |
| (Circle with dot)                | PIP  | PONDEROSA PINE                      |
| (Circle with dot)                | PIS  | SCOTCH PINE                         |
| (Circle with dot)                | PIF  | VANDERWOLFS PYRAMID LIMBER PINE     |
| <b>ORNAMENTAL TREE</b>           |      |                                     |
| (Circle with dot)                | ACG  | BIGTOOTH MAPLE                      |
| (Circle with dot)                | KOP  | GOLDEN RAIN TREE                    |
| (Circle with dot)                | PCN  | NEWPORT FLOWERING PLUM              |
| (Circle with dot)                | AMA  | SERVICEBERRY                        |
| <b>DECIDUOUS SHRUBS</b>          |      |                                     |
| (Circle with dot)                | RTA  | AUTUMN AMBER SUMAC                  |
| (Circle with dot)                | SBT  | BIRCHLEAF SPIREA                    |
| (Circle with dot)                | CCD  | DARK KNIGHT BLUEBEARD               |
| (Circle with dot)                | ENS  | DWARF BLUE RABBITBRUSH              |
| (Circle with dot)                | FIA  | DWARF FORSYTHIA                     |
| (Circle with dot)                | CHM  | FERNBUSH                            |
| (Circle with dot)                | RAG  | GRO-LOW FRAGRANT SUMAC              |
| (Circle with dot)                | PBP  | PAWNEE BUTTES SAND CHERRY           |
| (Circle with dot)                | CHN  | RABBITBRUSH                         |
| <b>EVERGREEN SHRUBS</b>          |      |                                     |
| (Circle with dot)                | JHB  | BLUE CHIP JUNIPER                   |
| (Circle with dot)                | PMB  | BLUE JAZZ PINON PINE                |
| (Circle with dot)                | EEQ  | BLUESTEM JOINT FIR                  |
| (Circle with dot)                | ATC  | FOURWING SALTBRUSH                  |
| (Circle with dot)                | ARL  | LEPRECHAUN SOUTHERNWOOD             |
| (Circle with dot)                | ARC  | PANCHITO MANZANITA                  |
| <b>ORNAMENTAL GRASSES</b>        |      |                                     |
| (Circle with dot)                | PAH  | BLUE SWITCH GRASS                   |
| (Circle with dot)                | PAS  | BURGUNDY SWITCH GRASS               |
| (Circle with dot)                | CAO  | OVERDAM FEATHER REED GRASS          |
| <b>PERENNIALS / GROUNDCOVERS</b> |      |                                     |
| (Circle with dot)                | SDM  | WINDWALKER® ROYAL RED SAGE          |
| <b>GROUND COVERS</b>             |      |                                     |
| (Stippled pattern)               |      | MID GRASS W/ WILDFLOWERS            |
| (Cross-hatched pattern)          |      | TAN 3/4" ANGULAR ROCK MULCH         |
| (Dashed line)                    |      | EDGER                               |



Prepared For  
BEN LOMAND  
MARY SUNG  
3275 COUNTY LINE ROAD  
MONUMENT, CO 80123  
719-332-2607

Land Planning



pcs group inc. www.pcsgroupco.com  
200 kalamath st. denver co 80223  
1.303.531.4905

Engineering

**ATWELL LLC**

7200 E Orchard Rd., Suite 125  
Greenwood Village, CO 80111  
(866) 708.0500

BEN LOMAND MOUNTAIN VILLAGE  
Landscape Plans  
El Paso County, Colorado

Drawn by: PCS Staff  
Checked by: PCS Staff  
Issue Date: 02.09.2026  
Revisions:

Sheet Name

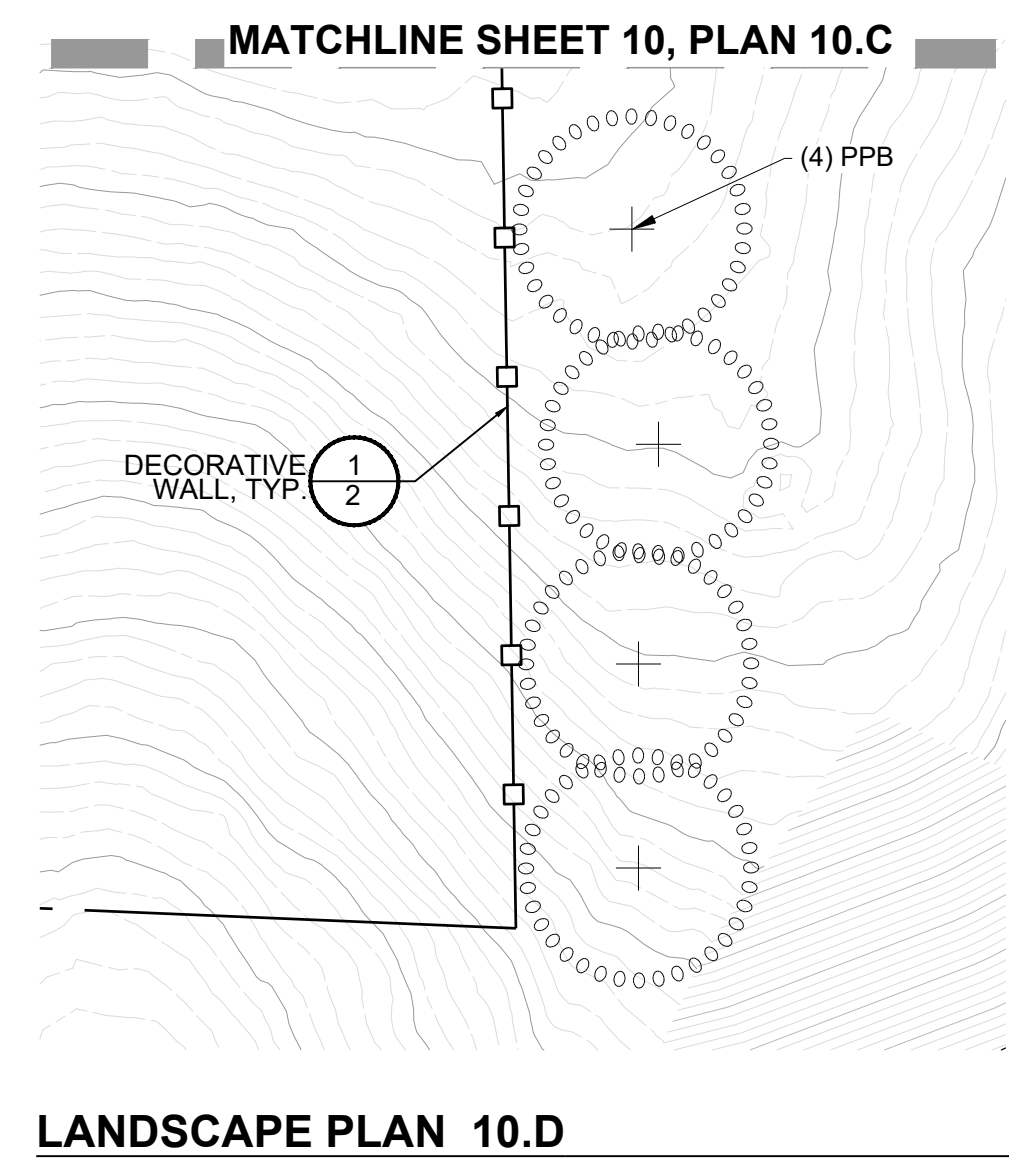
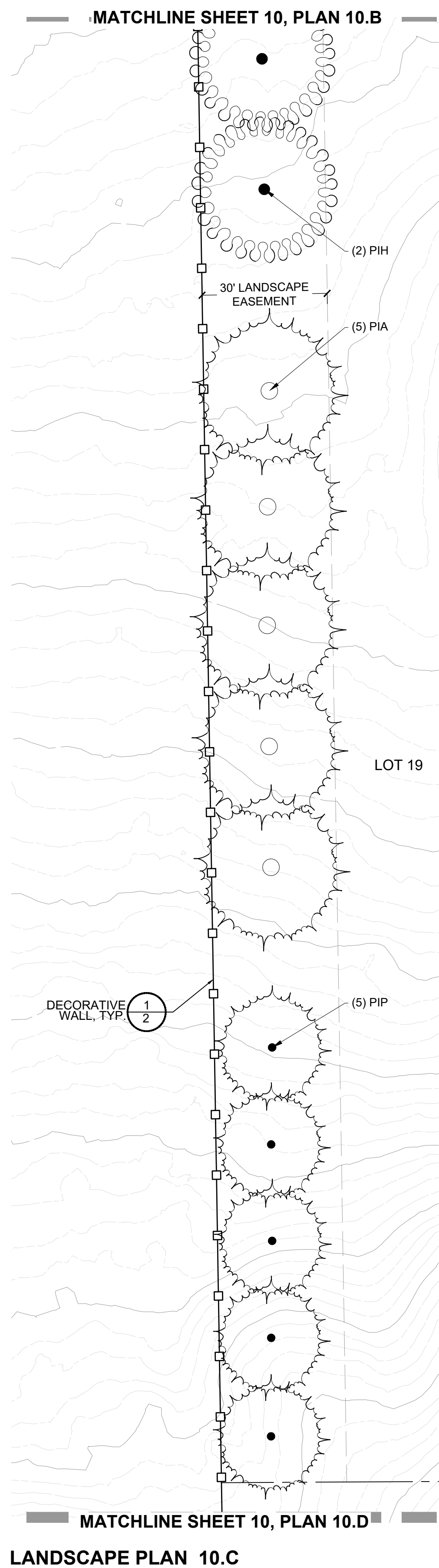
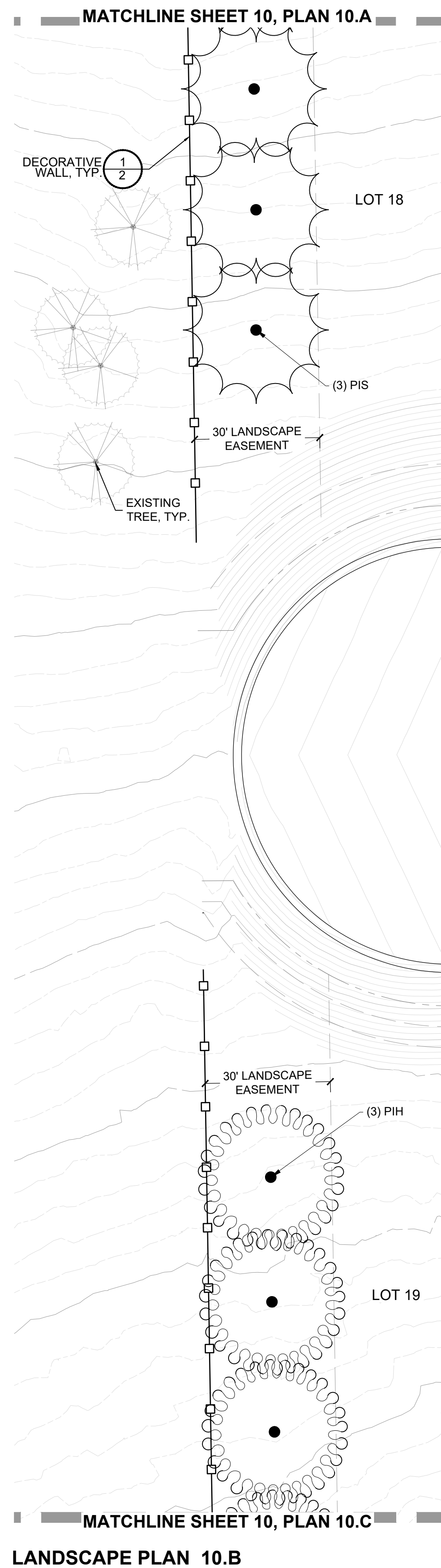
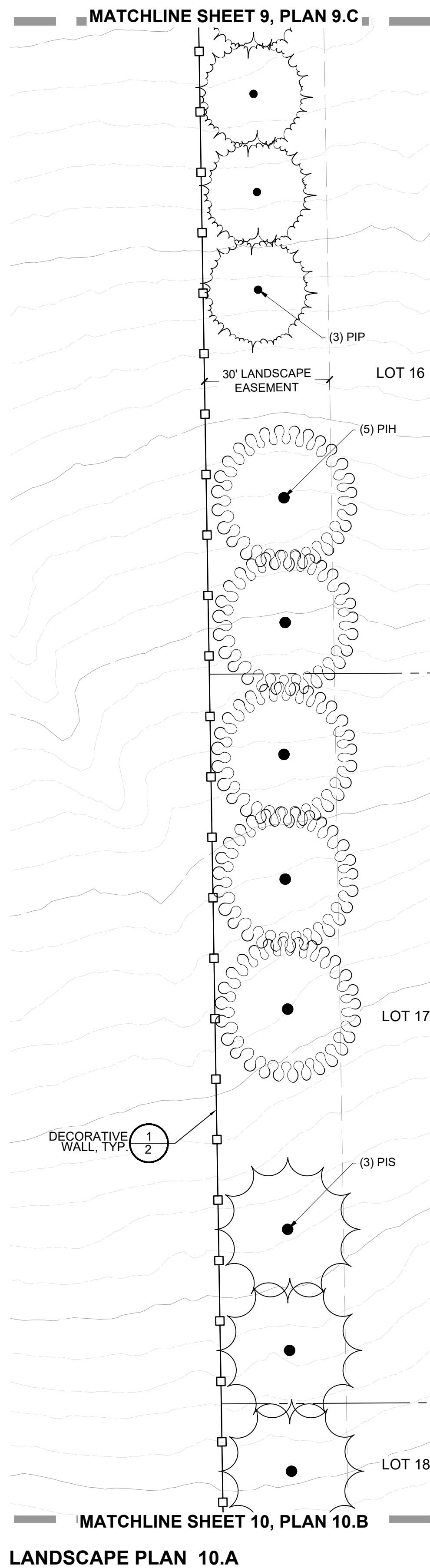
LANDSCAPE PLAN

Sheet Number

9

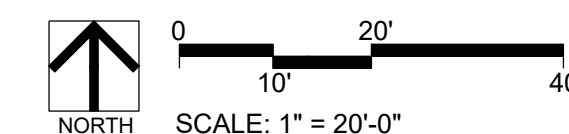
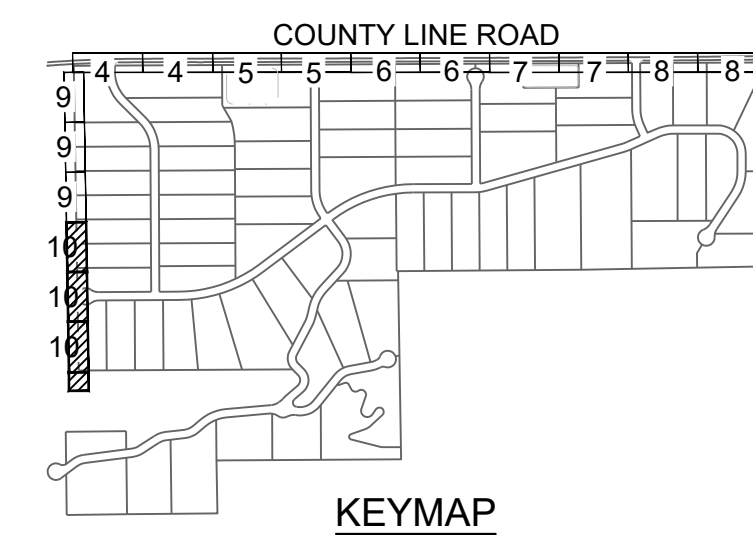
# BEN LOMAND MOUNTAIN VILLAGE

## LANDSCAPE SITE PLAN



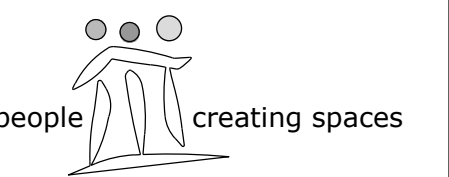
### PLANT LEGEND

| SYMBOL                           | CODE | COMMON NAME                         |
|----------------------------------|------|-------------------------------------|
| (Circle with cross)              |      | EXISTING TREE                       |
| <b>EVERGREEN TREE</b>            |      |                                     |
| (Square)                         | PPB  | BABY BLUE EYES COLORADO BLUE SPRUCE |
| (Circle with dot)                | PIH  | BOSNIAN PINE                        |
| (Circle with cross)              | JSM  | MOONGLOW JUNIPER                    |
| (Circle with dot)                | PIA  | NORWAY SPRUCE                       |
| (Circle with cross)              | PIP  | PONDEROSA PINE                      |
| (Circle with dot)                | PIS  | SCOTCH PINE                         |
| (Circle with cross)              | PIF  | VANDERWOLFS PYRAMID LIMBER PINE     |
| <b>ORNAMENTAL TREE</b>           |      |                                     |
| (Circle with dot)                | ACG  | BIGTOOTH MAPLE                      |
| (Circle with cross)              | KOP  | GOLDEN RAIN TREE                    |
| (Circle with dot)                | PCN  | NEWPORT FLOWERING PLUM              |
| (Circle with cross)              | AMA  | SERVICEBERRY                        |
| <b>DECIDUOUS SHRUBS</b>          |      |                                     |
| (Circle with cross)              | RTA  | AUTUMN AMBER SUMAC                  |
| (Circle with dot)                | SBT  | BIRCHLEAF SPIREA                    |
| (Circle with cross)              | CCD  | DARK KNIGHT BLUEBEARD               |
| (Circle with dot)                | ENS  | DWARF BLUE RABBITBRUSH              |
| (Circle with cross)              | FIA  | DWARF FORSYTHIA                     |
| (Circle with dot)                | CHM  | FERNBUSH                            |
| (Circle with cross)              | RAG  | GRO-LOW FRAGRANT SUMAC              |
| (Circle with dot)                | PBP  | PAWNEE BUTTES SAND CHERRY           |
| (Circle with cross)              | CHN  | RABBITBRUSH                         |
| <b>EVERGREEN SHRUBS</b>          |      |                                     |
| (Circle with cross)              | JHB  | BLUE CHIP JUNIPER                   |
| (Circle with dot)                | PMB  | BLUE JAZZ PINON PINE                |
| (Circle with cross)              | EEQ  | BLUESTEM JOINT FIR                  |
| (Circle with dot)                | ATC  | FOURWING SALTBUUSH                  |
| (Circle with cross)              | ARL  | LEPRECHAUN SOUTHERNWOOD             |
| (Circle with dot)                | ARC  | PANCHITO MANZANITA                  |
| <b>ORNAMENTAL GRASSES</b>        |      |                                     |
| (Circle with cross)              | PAH  | BLUE SWITCH GRASS                   |
| (Circle with dot)                | PAS  | BURGUNDY SWITCH GRASS               |
| (Circle with cross)              | CAO  | OVERDAM FEATHER REED GRASS          |
| <b>PERENNIALS / GROUNDCOVERS</b> |      |                                     |
| (Circle with cross)              | SDM  | WINDWALKER® ROYAL RED SAGE          |
| <b>GROUND COVERS</b>             |      |                                     |
| (Dotted pattern)                 |      | MID GRASS W/ WILDFLOWERS            |
| (Cross-hatched pattern)          |      | TAN 3/4" ANGULAR ROCK MULCH         |
| (Dashed line)                    |      | EDGER                               |



Prepared For:  
**BEN LOMAND**  
 MARY SUNG  
 3275 COUNTY LINE ROAD  
 MONUMENT, CO 80123  
 719-332-2607

Land Planning



pcs group inc. www.pcsgroupco.com  
 200 katamoh st. denver co 80223  
 1.303.531.4905

Engineering

**ATWELL LLC**  
 7200 E Orchard Rd., Suite 125  
 Greenwood Village, CO 80111  
 (866) 708.0500

**BEN LOMAND MOUNTAIN VILLAGE**  
 Landscape Plans  
 El Paso County, Colorado

Drawn by: PCS Staff  
 Checked by: PCS Staff  
 Issue Date: 02.09.2026  
 Revisions:

Sheet Name

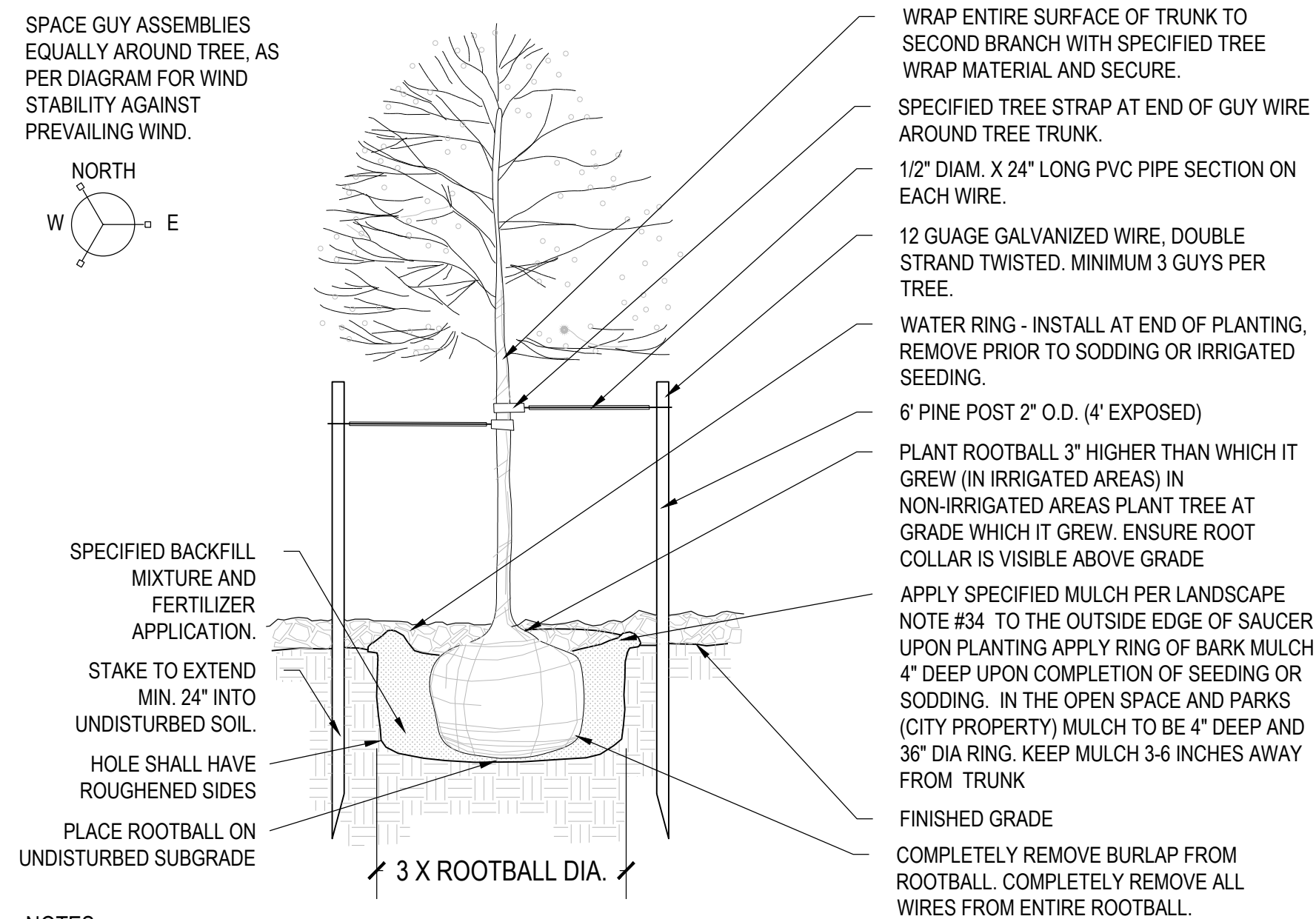
LANDSCAPE PLAN

Sheet Number

10

# BEN LOMAND MOUNTAIN VILLAGE

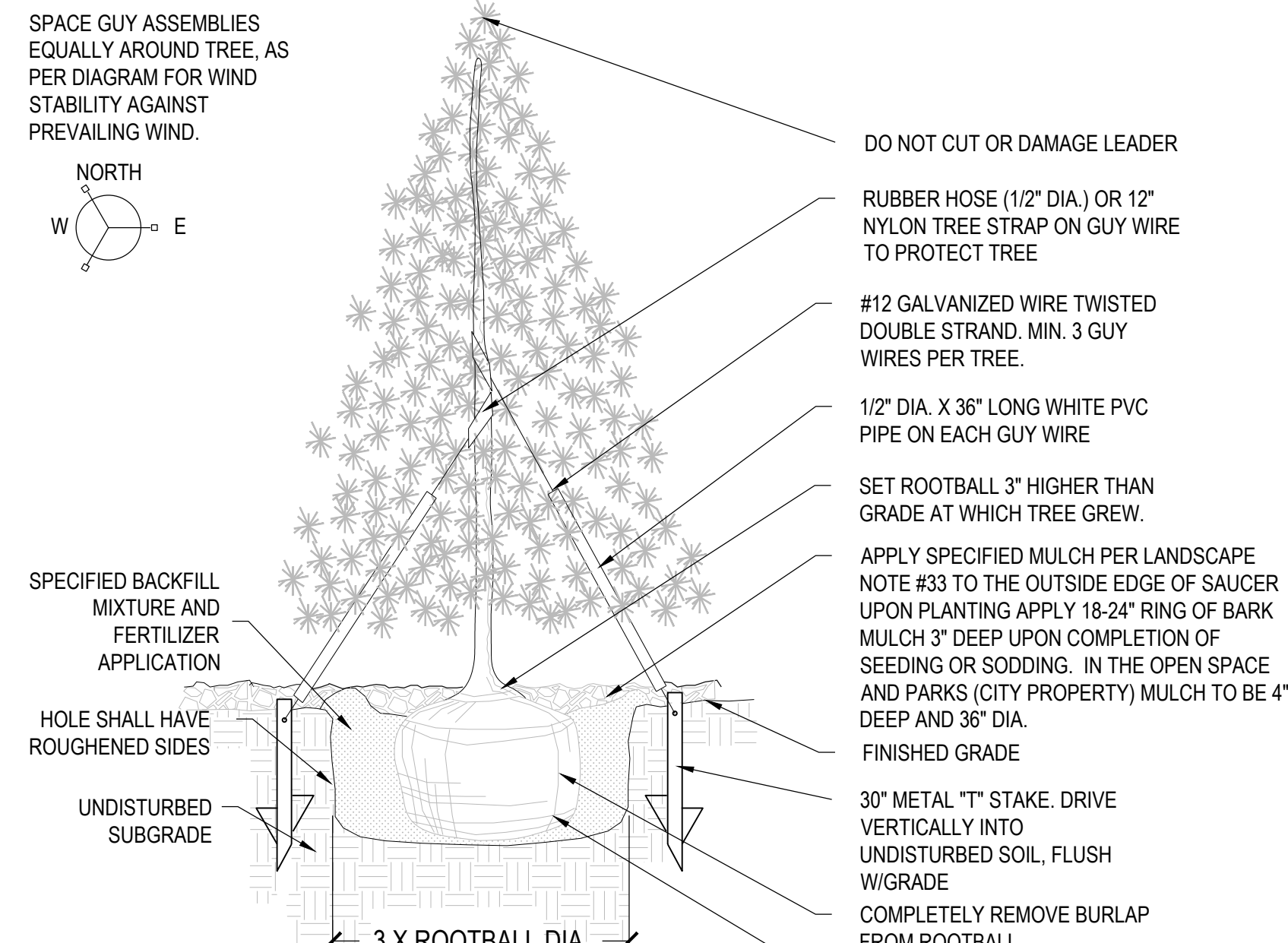
## LANDSCAPE SITE PLAN



- NOTES:
1. ANY BROKEN OR CRUMBLING ROOTBALLS WILL BE REJECTED.
  2. REMOVING THE CONTAINERS WILL NOT BE AN EXCUSE FOR DAMAGED ROOTBALLS.
  3. TREES PLANTED WITHIN DRAIN STRIP OR SCREE AREA SHALL HAVE 3'-0" DIAMETER RING OF MULCH 5" DEEP AT THE BASE OF EACH TREE
  4. PLANT TREES AND APPLY MULCH PRIOR TO PLACING SCREE MATERIAL
  5. STREET TREES ARE TO BE LIMBED UP TO 8'. PRUNING SHALL OCCUR IN THE APPROPRIATE MANNER AT THE NURSERY. SUBSTANTIAL PRUNING WILL NOT BE ALLOWED ON-SITE.
  6. DEEP WATER ALL PLANTS AT THE TIME OF PLANTING

### 1 DECIDUOUS TREE PLANTING

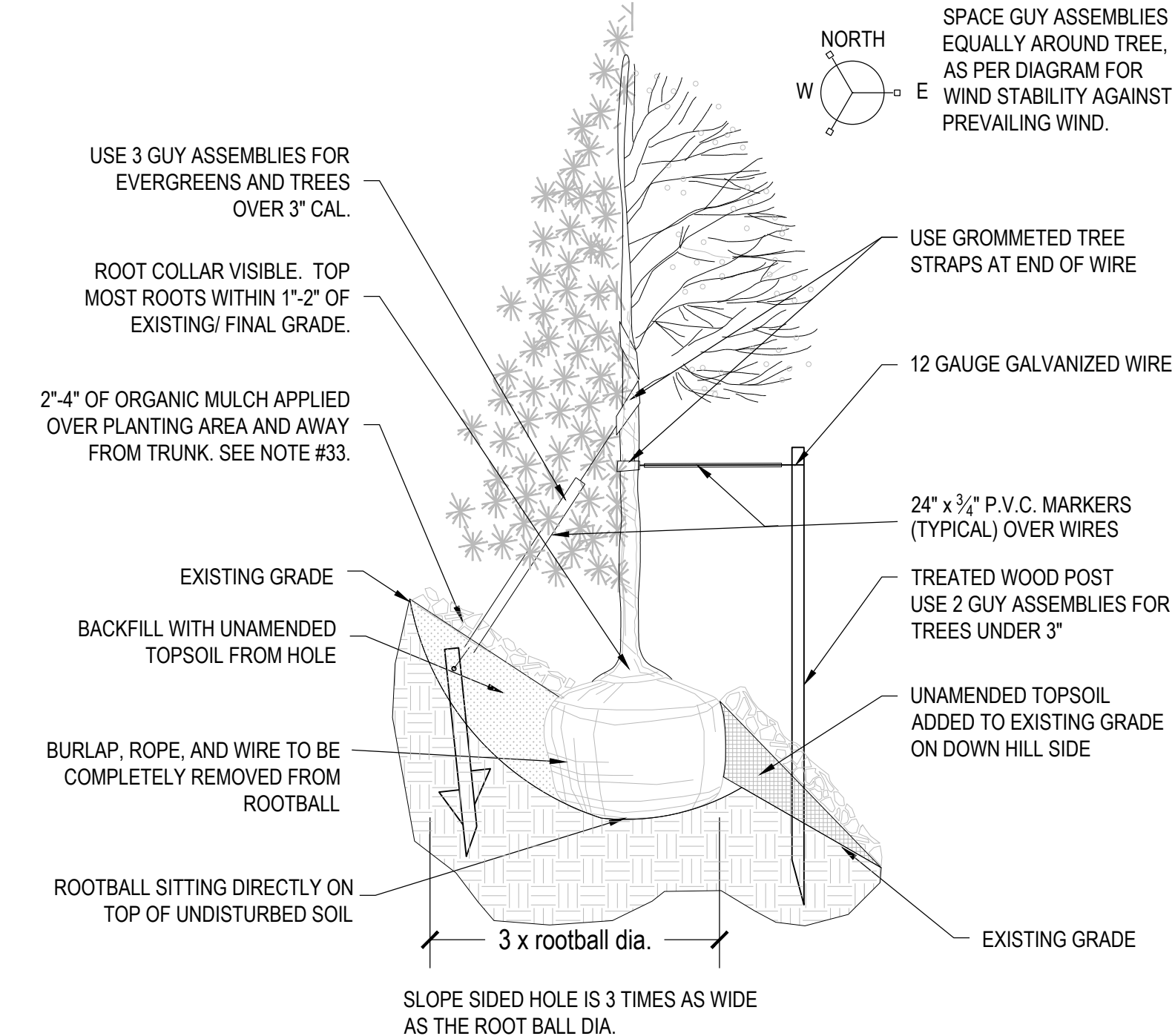
SCALE: NTS



- NOTES:
1. ANY BROKEN OR CRUMBLING ROOTBALLS WILL BE REJECTED. REMOVING THE CONTAINERS WILL NOT BE AN EXCUSE FOR DAMAGED ROOTBALLS.
  2. TREES PLANTED WITHIN DRAIN STRIP OR SCREE AREA SHALL HAVE 3'-0" DIAMETER RING OF MULCH 5" DEEP AT THE BASE OF EACH TREE.
  3. PLANT TREES AND APPLY MULCH PRIOR TO PLACING SCREE MATERIAL
  4. DEEP WATER ALL PLANTS AT TIME OF PLANTING

### 2 EVERGREEN TREE PLANTING

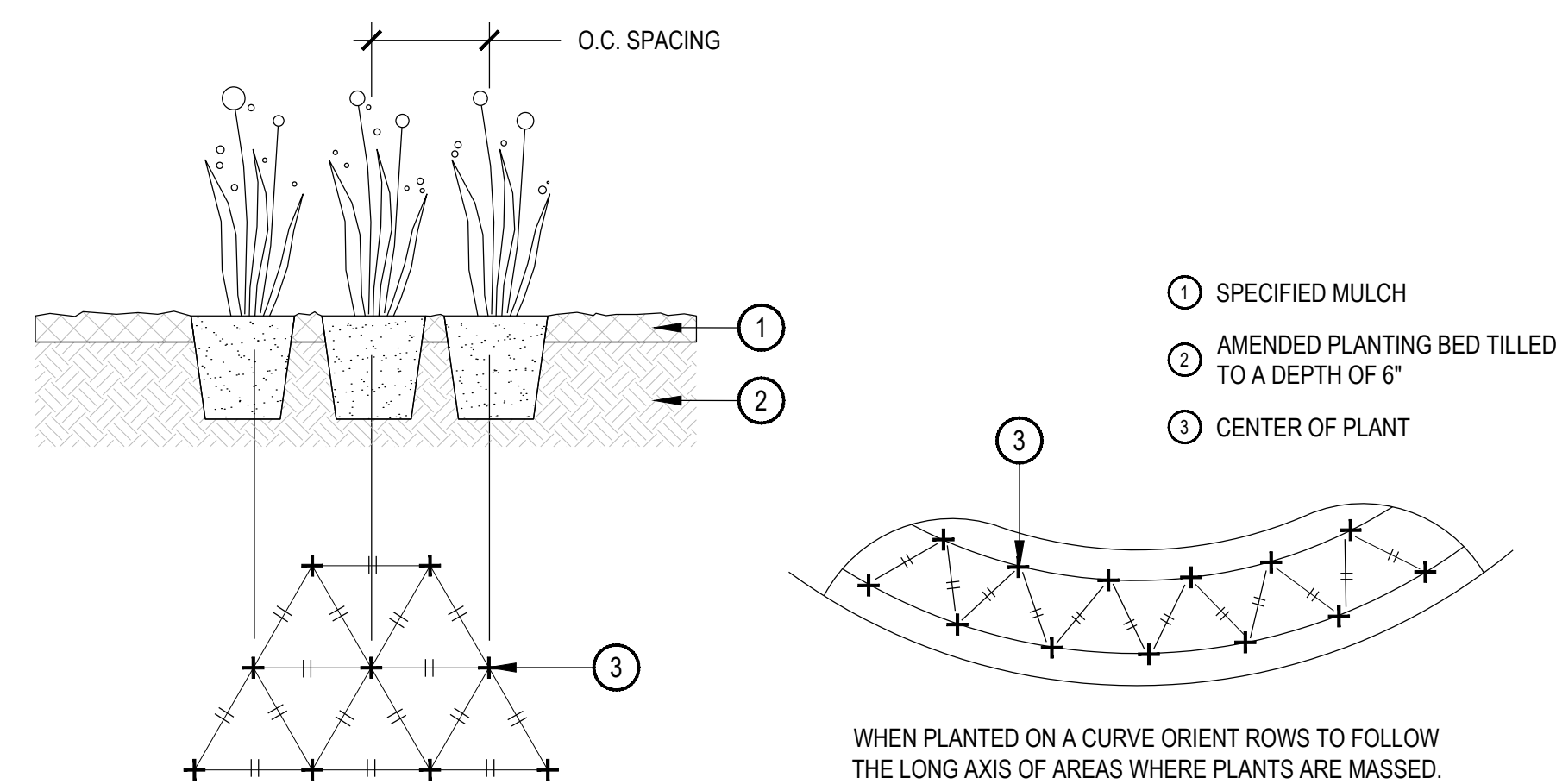
SCALE: NTS



- NOTES:
1. BROKEN OR CRUMBLING ROOTBALLS WILL BE REJECTED. REMOVING THE CONTAINERS WILL NOT BE AN EXCUSE FOR DAMAGED ROOTBALLS.
  2. PRUNE ALL DEAD OR DAMAGED WOOD AFTER PLANTING.

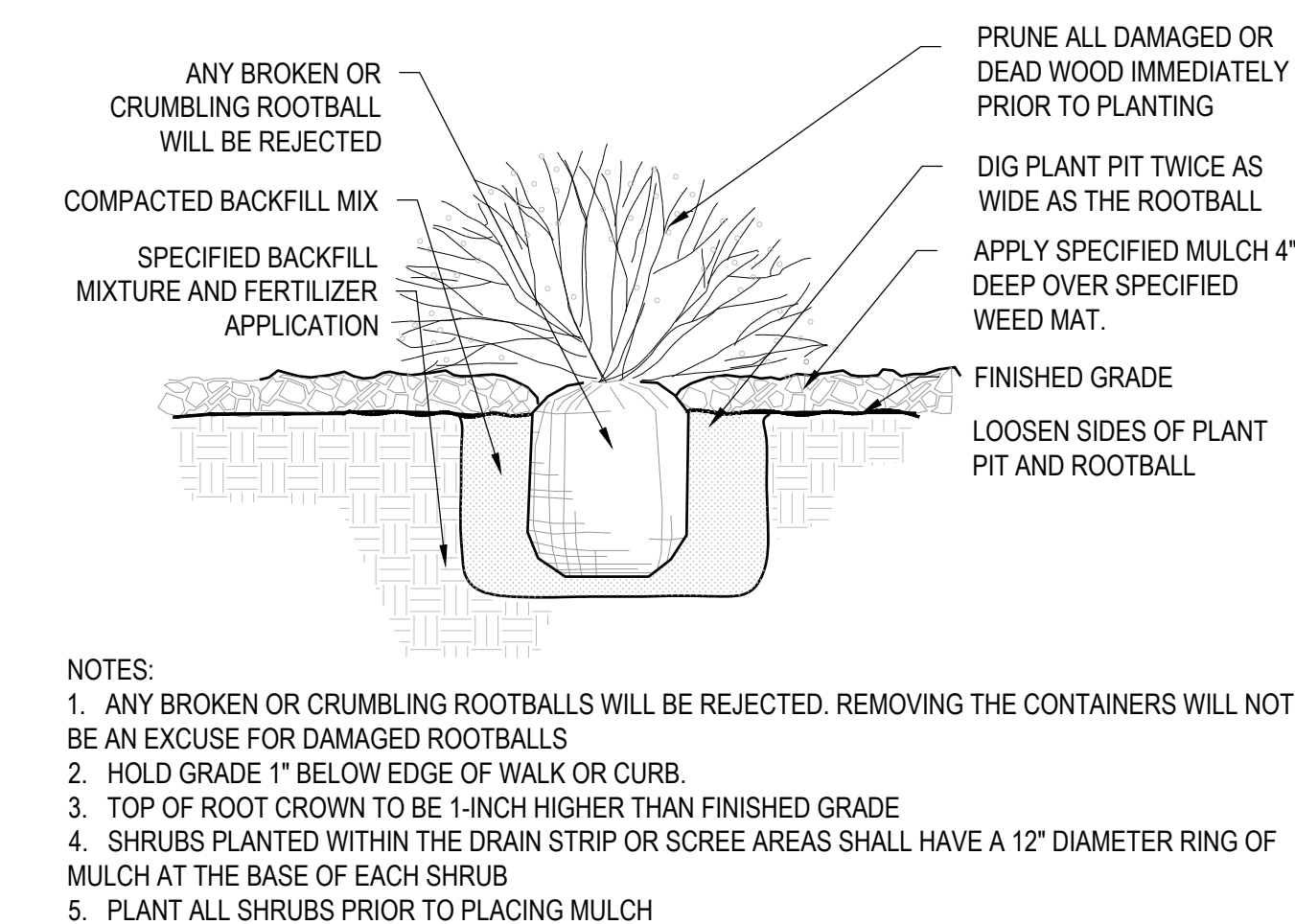
### 3 TREE PLANTING ON SLOPE

SCALE: NTS



### 4 PLANT BED & SPACING

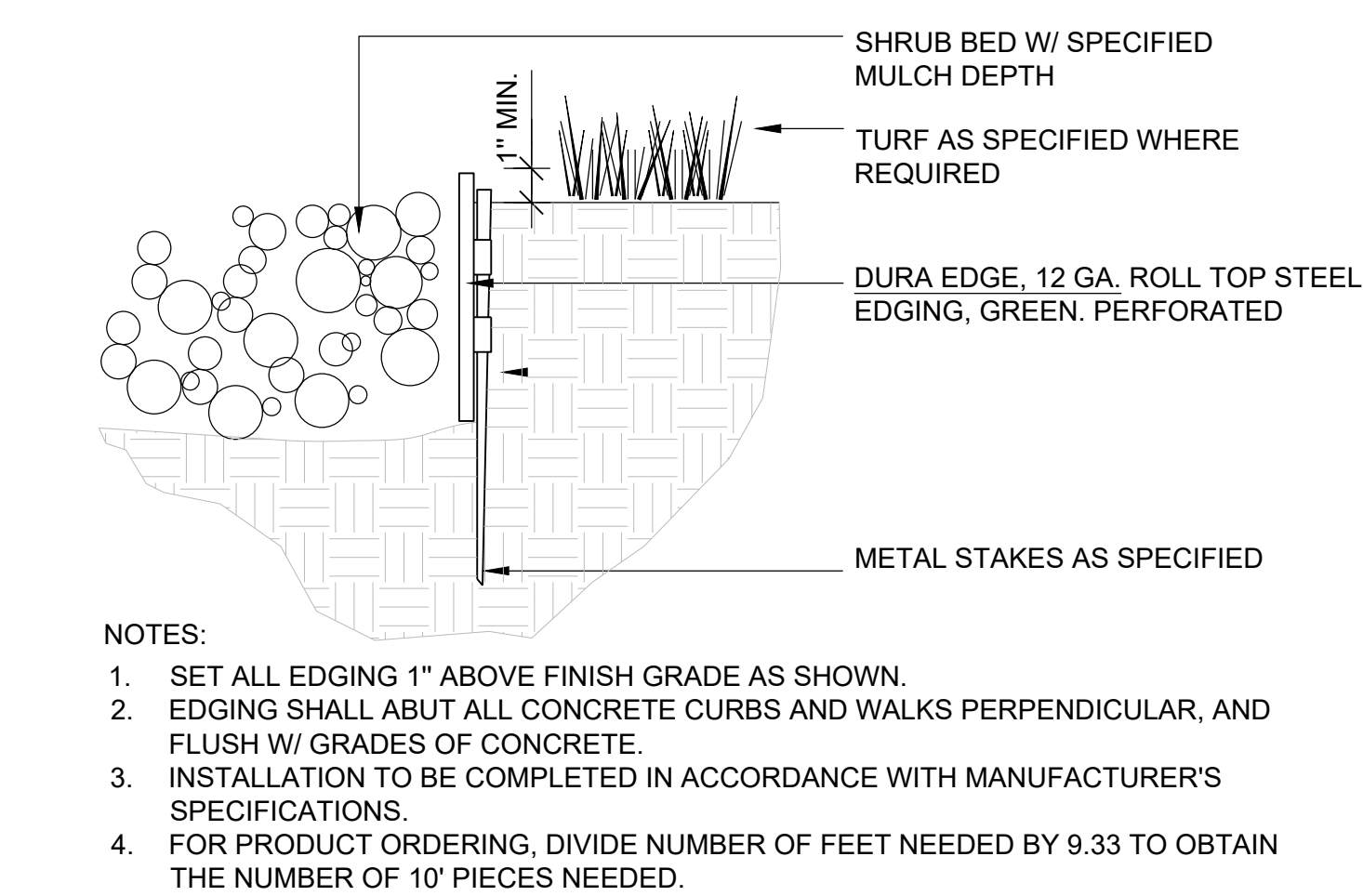
SCALE: NTS



- NOTES:
1. ANY BROKEN OR CRUMBLING ROOTBALLS WILL BE REJECTED. REMOVING THE CONTAINERS WILL NOT BE AN EXCUSE FOR DAMAGED ROOTBALLS.
  2. HOLD GRADE 1" BELOW EDGE OF WALK OR CURB.
  3. TOP OF ROOT CROWN TO BE 1-INCH HIGHER THAN FINISHED GRADE
  4. SHRUBS PLANTED WITHIN THE DRAIN STRIP OR SCREE AREAS SHALL HAVE A 12" DIAMETER RING OF MULCH AT THE BASE OF EACH SHRUB
  5. PLANT ALL SHRUBS PRIOR TO PLACING MULCH

### 5 PERENNIAL OR GRASS PLANTING

SCALE: NTS



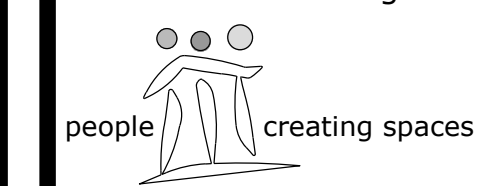
- NOTES:
1. SET ALL EDGING 1" ABOVE FINISH GRADE AS SHOWN.
  2. EDGING SHALL ABUT ALL CONCRETE CURBS AND WALKS PERPENDICULAR, AND FLUSH W/ GRADES OF CONCRETE.
  3. INSTALLATION TO BE COMPLETED IN ACCORDANCE WITH MANUFACTURER'S SPECIFICATIONS.
  4. FOR PRODUCT ORDERING, DIVIDE NUMBER OF FEET NEEDED BY 9.33 TO OBTAIN THE NUMBER OF 10' PIECES NEEDED.

### 6 STEEL EDGER

SCALE: NTS

Prepared For:  
BEN LOMAND  
MARY SUNG  
3275 COUNTY LINE ROAD  
MONUMENT, CO 80123  
719-332-2607

Land Planning



pcs group inc. www.pcsgroupco.com  
200 kalamath st. denver co 80223  
1.303.531.4905

Engineering

ATWELL LLC  
7200 E Orchard Rd., Suite 125  
Greenwood Village, CO 80111  
(866) 708.0500

BEN LOMAND MOUNTAIN VILLAGE  
Landscape Plans  
El Paso County, Colorado

Drawn by: PCS Staff  
Checked by: PCS Staff  
Issue Date: 02.09.2026  
Revisions:

Sheet Name

LANDSCAPE DETAILS

Sheet Number