

ELECTRIAL SITE DEVELOPMENT PLAN
SCALE: 1" = 30'-0"

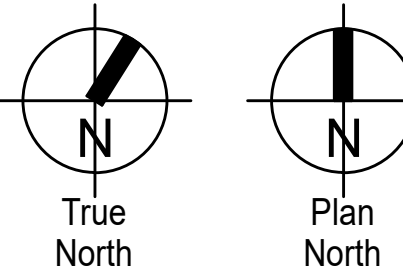
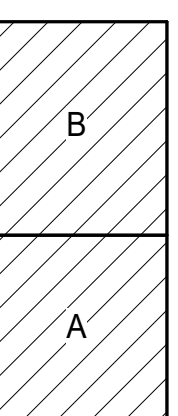
LUMINAIRE SCHEDULE - SITE											
MARK	MANUFACTURER	CATALOG NUMBER	QTY/TYP	LAMP			FINISH	MOUNTING	WATTAGE	VOLTAGE	DESCRIPTION
				CCT	LUMENS						
C1	E-LUMINAIRE OR APPROVED EQUAL	RCS1-DP-25-40K8-MV-WH-FSP-211	LED	4000K	3300		WHITE	RECESSED	22 VA	277V	18" SIDE SQUARE LOW GLARE RECESSED CANOPY FIXTURE WITH HIGH DURABILITY ALUMINUM HOUSING, TYPE 5 DISTRIBUTION, -40 DEG. C TO 60 DEG. C, SUITABLE FOR WET LOCATIONS COVERED CANOPY, 0-10V DIMMING DRIVER, OUTDOOR PHOTO MOTION SENSOR, 5 YEAR WARRANTY.
C1EM	E-LUMINAIRE OR APPROVED EQUAL	RCS1-DP-25-40K8-MV-WH-FSP-211-RBB	LED	4000K	3300		WHITE	RECESSED	22 VA	277V	SAME AS ABOVE BUT PROVIDED WITH A REMOTE BATTERY BACK-UP FOR EMERGENCY LIGHTING.
G1	LUMENPULSE OR APPROVED EQUAL	LBIL-DO-120-27-40K-NS-CL-NO-FLH-SSB-RBO-ASL-HRS-JUL	LED	4000K	4375		STAINLESS	IN-GRADE	60 VA	277V	10-1/4" DIA. X 12-5/8" IN-GROUND LED UPLIGHT, HIGH PERFORMANCE FIXTURE, DRIE OVER COMPLIANT, NARROW SPOT DISTRIBUTION, CLEAR LENS, NO DIMMING, -40 DEG. F TO 122 DEG. F, IP66, IK8 RATED, -3 DEG. TO +15 DEG. TILT, 360 DEG. ROTATION, 5 YEAR LIMITED WARRANTY.
PL3	LITHONIA LIGHTING OR APPROVED EQUAL	DSX1 LED-P2-40K-70CRI-T3M-MVOLT-SP A-NLTAIR2 PIRIN-DOBXD POLE.SSA-17-6-4C-DM19AS-DOBXD	LED	4000K	9762		DARK BRONZE	POLE ON 2.5' BASE	68 VA	277V	32 7/16" X 14 26/64" LED POLE LIGHT, SINGLE HEAD, DIE-CAST ALUMINUM HOUSING, TYPE 3 MEDIUM DISTRIBUTION, RATED FOR -40 DEG. C FOR WET LOCATIONS, IP66 RATED, WIRELESS ENABLED BI-LEVEL MOTION AMBIENT SENSOR, 5 YEAR LIMITED WARRANTY.
PL4	LITHONIA LIGHTING OR APPROVED EQUAL	DSX1 LED-P2-40K-70CRI-TFM-MVOLT-S A-NLTAIR2 PIRIN-DOBXD POLE.SSA-17-6-4C-DM19AS-DOBXD	LED	4000K	9976		DARK BRONZE	POLE ON 2.5' BASE	68 VA	277V	SAME AS ABOVE BUT TYPE FORWARD THROW MEDIUM DISTRIBUTION.
PL5	LITHONIA LIGHTING OR APPROVED EQUAL	DSX1 LED-P2-40K-70CRI-T5W-MVOLT-SP A-NLTAIR2 PIRIN-DOBXD POLE.SSA-17-6-4C-DM19AS-DOBXD	LED	4000K	9976		DARK BRONZE	POLE ON 2.5' BASE	68 VA	277V	SAME AS ABOVE BUT DOUBLE HEAD FIXTURE WITH TYPE 5 WIDE DISTRIBUTION.
W1	LITHONIA LIGHTING OR APPROVED EQUAL	WDGE3 LED-P2-40K-70CRI-R4-MVOLT-SR M-NLTAIR2 PIR-DOBXD	LED	4000K	8779		DARK BRONZE	WALL	60 VA	120V	9 1/4" X 18 1/2" WALL MOUNT LED FIXTURE, DIE-CAST ALUMINUM HOUSING ZERO UPLIGHT TYPE DISTRIBUTION, -40 DEG. C MINIMUM AMBIENT, IP65, WIRELESS ENABLED BI-LEVEL MOTION AMBIENT SENSOR, 5 YEAR LIMITED WARRANTY.
W1EM	LITHONIA LIGHTING OR APPROVED EQUAL	WDGE3 LED-P2-40K-70CRI-R4-MVOLT-SR M-E20WC-NLTAIR2 PIR-DOBXD	LED	4000K	8779		DARK BRONZE	WALL	60 VA	120V	SAME AS ABOVE BUT EQUIPPED WITH AN EMERGENCY BATTERY BACK-UP FOR EMERGENCY LIGHTING.

KEYED NOTES

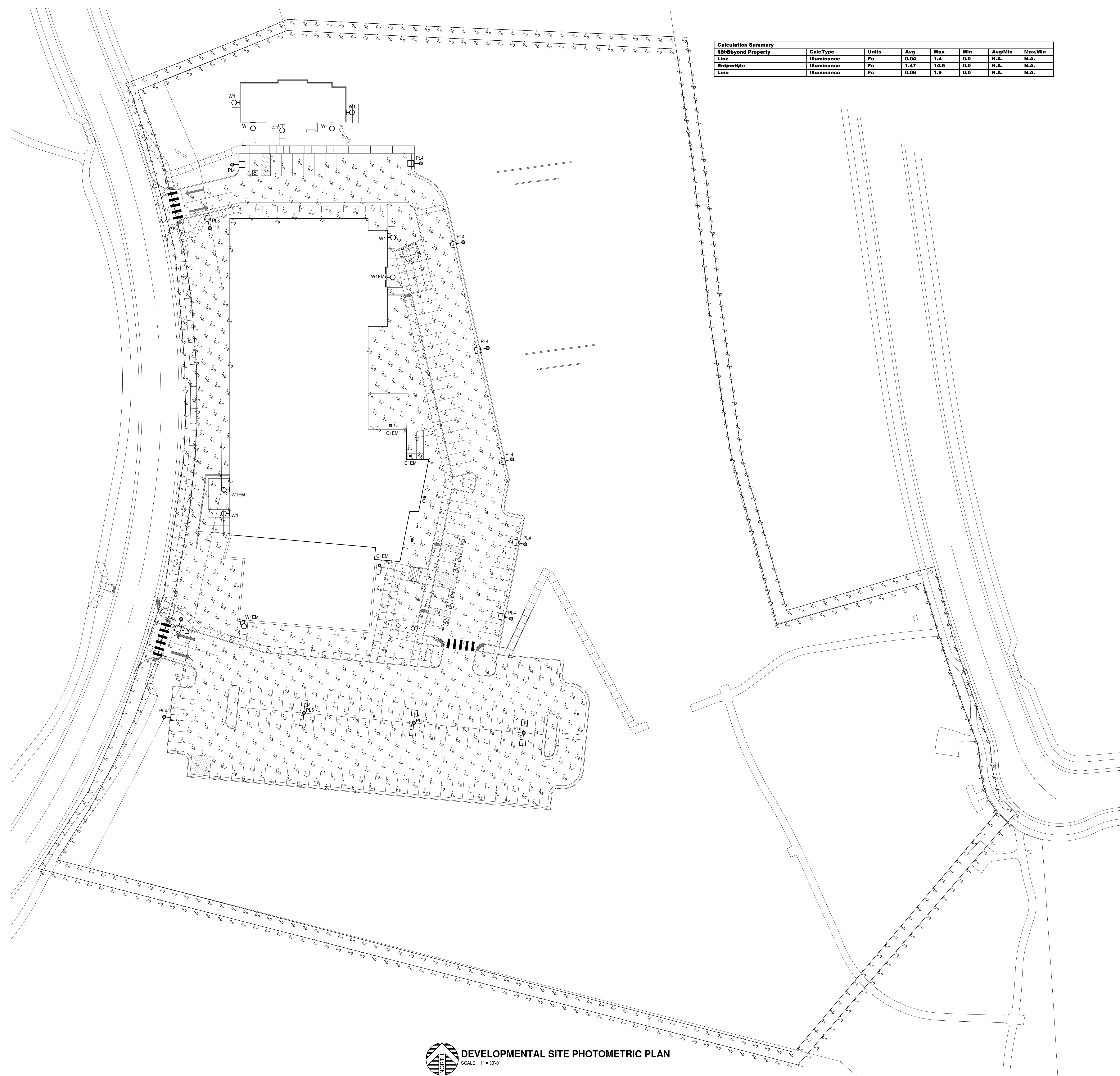
- 1 PROVIDE TWO CONDUITS: ONE (1) 1-1/4" CONDUIT WITH 2#3,4#6 FROM THE ELECTRICAL ROOM PANEL MRL1, AND ONE (1) 1" CONDUIT WITH THE APPROPRIATE DATA CABLE FROM THE MDF ROOM TO THE SIGN JUNCTION BOX. COORDINATE EXACT DATA CABLE REQUIREMENTS WITH THE SIGN MANUFACTURER PRIOR TO ROUGH-IN.
- 2 PROVIDE AN IN-GRADE POWER JUNCTION/PULL BOX, QUATIZE OR EQUAL WITH PENTAHEAD BOLTS FOR SECURITY.
- 3 PROVIDE AN EMPTY 4" CONDUIT WITH PULLSTRING FROM THE ELECTRICAL ROOM TO JUNCTION BOX FOR FUTURE USE.
- 4 PROVIDE AN EMPTY 3" CONDUIT WITH PULLSTRING FROM TELECOM DEMARCATION TO MDF ROOM. COORDINATE WITH TELECOM TRADE PRIOR TO ROUGH-IN.

DPE - SHEET INDEX

SHEET	TITLE
DPE1	ELECTRICAL SITE DEVELOPMENT PLAN
DPE2	DEVELOPMENTAL SITE PHOTOMETRIC PLAN
DPE3	CUT SHEETS



2/20/2024 5:34:40 PM



Calculation Property	Calc Type	Units	Avg	Max	Min	Avg/Min	Max/Min
Line	Illuminance	Fc	0.04	1.4	0.0	N.A.	N.A.
Envelope	Illuminance	Fc	1.47	14.5	0.0	N.A.	N.A.
Line	Illuminance	Fc	0.06	1.9	0.0	N.A.	N.A.

DEVELOPMENTAL SITE PHOTOMETRIC PLAN
SCALE: 1" = 30'-0"

L K A PARTNERS
INCORPORATED
A Professional Corporation for Architecture and Planning
430 North Tejon Street, Suite 208
Colorado Springs, Colorado 80903
Tel: 719.473.8846 Fax: 719.473.8848
web: www.lkapartners.com

PLANT
ENGINEERING CONSULTANTS
1818 S. W. 10th St., Suite 100
Pompano Beach, FL 33062
Tel: 954.781.1100 Fax: 954.781.1101
www.plantinc.com

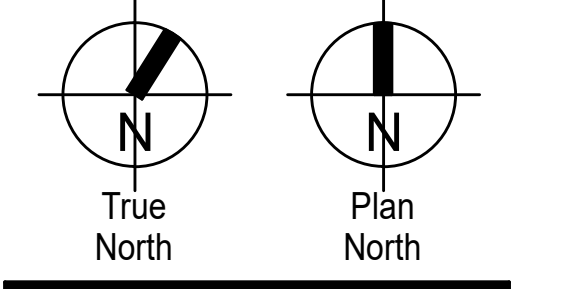
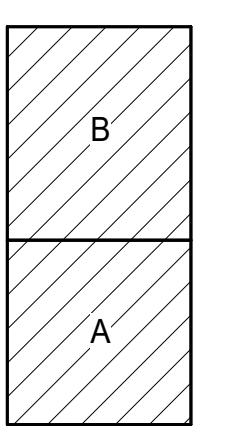
© Copyright 2023 The LKA Partners, Inc. This document and the information contained herein may not be reproduced or transmitted in any form or by any means, electronic or mechanical, including photocopying, recording, or by any information storage and retrieval system, without the express written permission of The LKA Partners, Inc. Unauthorized copying, disclosure or construction use are prohibited by copyright law.

Meridian Ranch Fieldhouse
Rainbow Bridge Dr
Peyton, CO 80831
Meridian Service Metro District

Design Development
Not for Construction

Drawn: CAO/JDH
Checked: MPP
Issued: 20 February 2024
Revised:

Area Key Plan



DEVELOPMENTAL SITE PHOTOMETRIC PLAN

DPE2
Project No. 23-012
The LKA Partners Incorporated

