

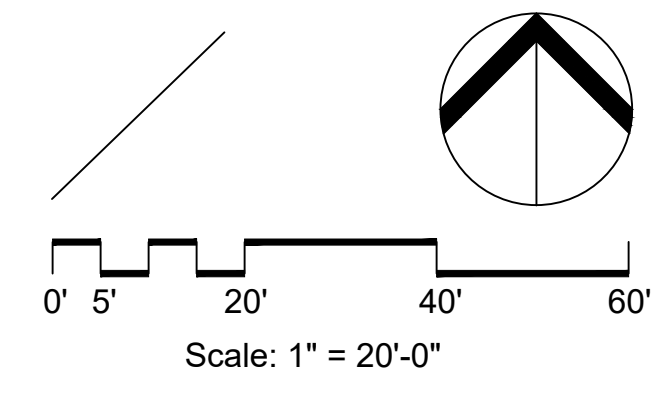
- AGGREGATE TYPE 2 (TYP.)
- STEEL MAINTENANCE EDGE (TYP.)
- BUR OAK (Quercus macrocarpa) 10 ea. 2.0" cal.
- AGGREGATE TYPE 1 (TYP.)
- SIDE OATS GRAMA GRASS (Bouteloua curtipendula) 29 ea. #1

**LKA PARTNERS**  
INCORPORATED  
A Professional Corporation for Architecture and Planning  
430 North Tejon Street Suite 208  
Colorado Springs Colorado 80903  
tele: 719.473.8446 fax: 719.473.8448  
web: www.lkpartners.com

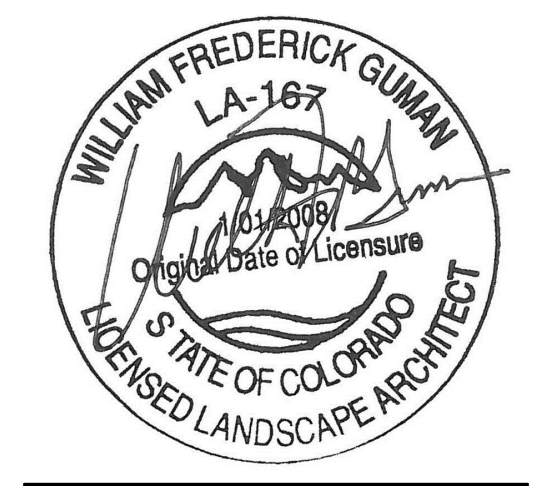
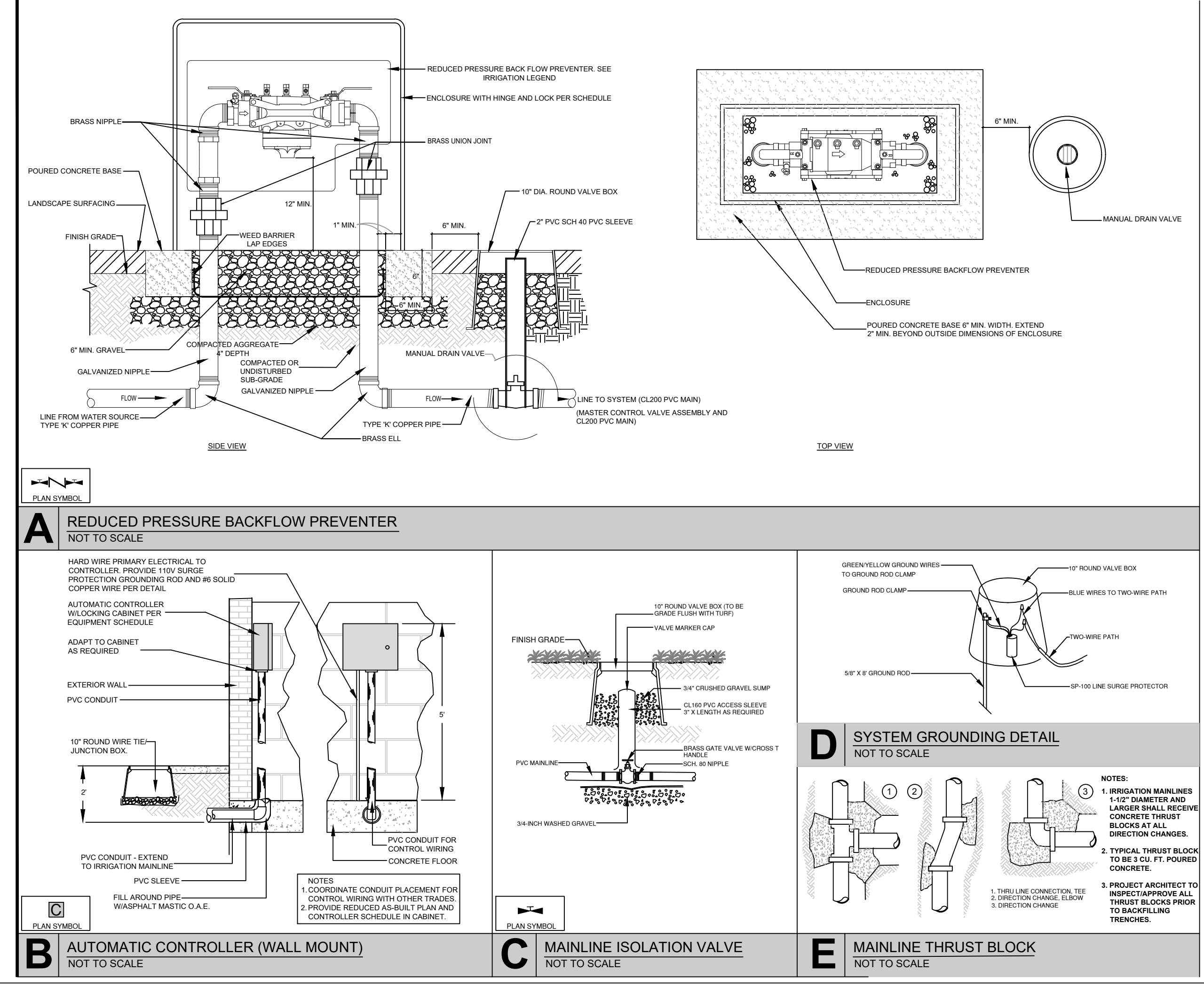


© Copyright 2024 The LKA Partners, Inc. This document and the information contained herein may not be reproduced or excerpted from without the express written permission of The LKA Partners, Inc. Unauthorized copying, disclosure or construction use are prohibited by copyright law.

**Meridian Ranch Fieldhouse**  
Rainbow Bridge Dr  
Peyton, CO 80831  
Meridian Service Metro District  
11886 Stapleton Drive  
Falcon, CO 80831



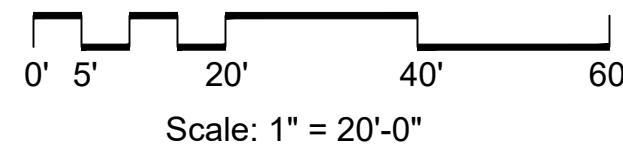
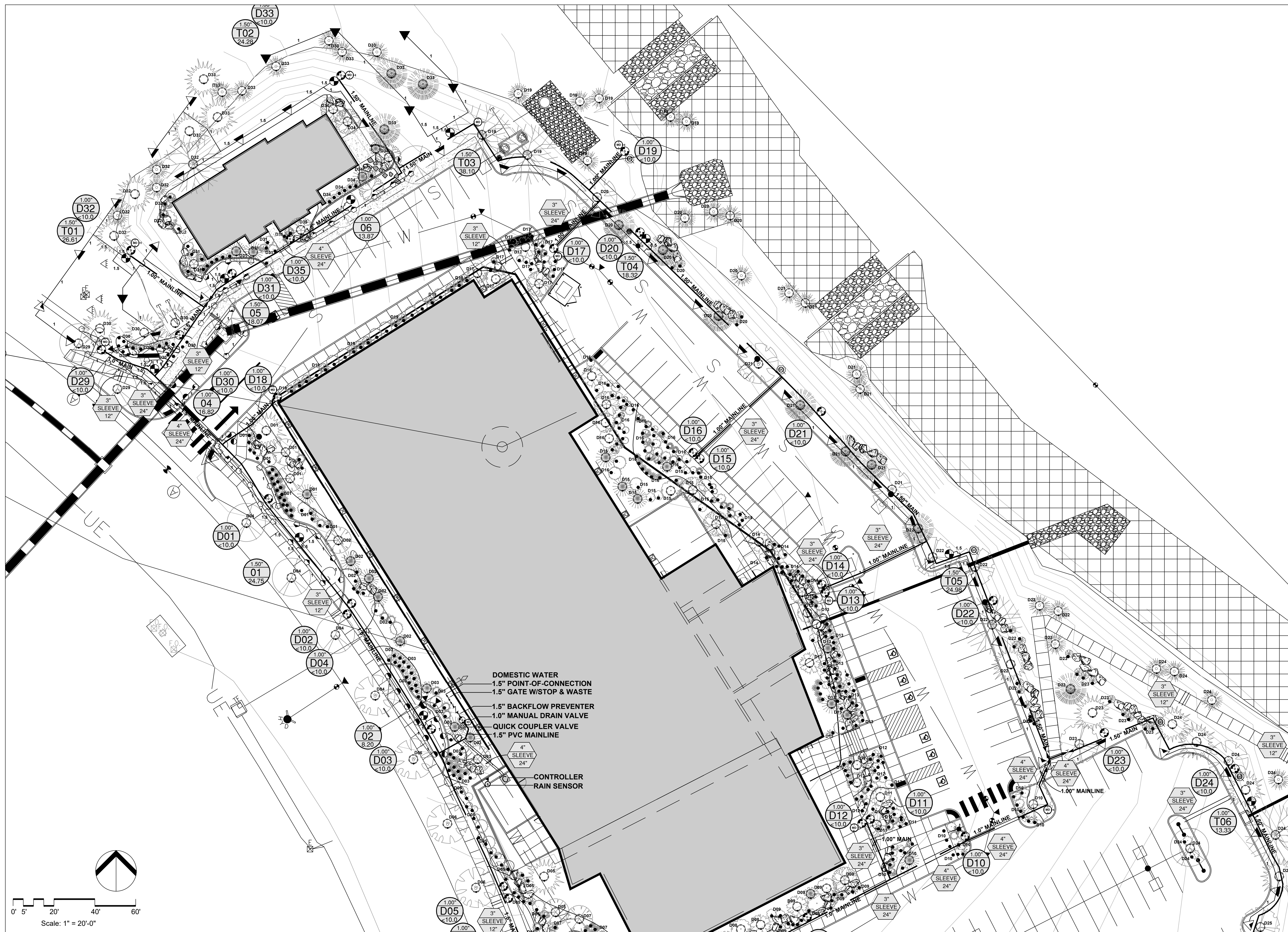
(SPACE INTENTIONALLY BLANK)



El Paso County  
Major Commercial Site  
Development Plan

Drawn: WFG GEM  
Checked: GEM  
Issued: 20 February 2024  
Revised:  
Revised:  
Final:

Landscape Plan  
**LS-2**



**LKA PARTNERS**  
 INCORPORATED  
 A Professional Corporation for Architecture and Planning  
 430 North Tejon Street Suite 208  
 Colorado Springs Colorado 80903  
 tele: 719.473.8446 fax: 719.473.8448  
 web: www.lkpartners.com



© Copyright 2024 The LKA Partners, Inc. This document and the information contained herein may not be reproduced or excerpted from without the express written permission of The LKA Partners, Inc. Unauthorized copying, disclosure or construction use are prohibited by copyright law.

**Meridian Ranch Fieldhouse**  
 Rainbow Bridge Dr  
 Peyton, CO 80831  
 Meridian Service Metro District  
 11886 Stapleton Drive  
 Falcon, CO 80831



El Paso County  
 Major Commercial Site  
 Development Plan

Drawn: WFG GEM  
 Checked: GEM  
 Issued: 20 February 2024  
 Revised:  
 Revised:  
 Final:

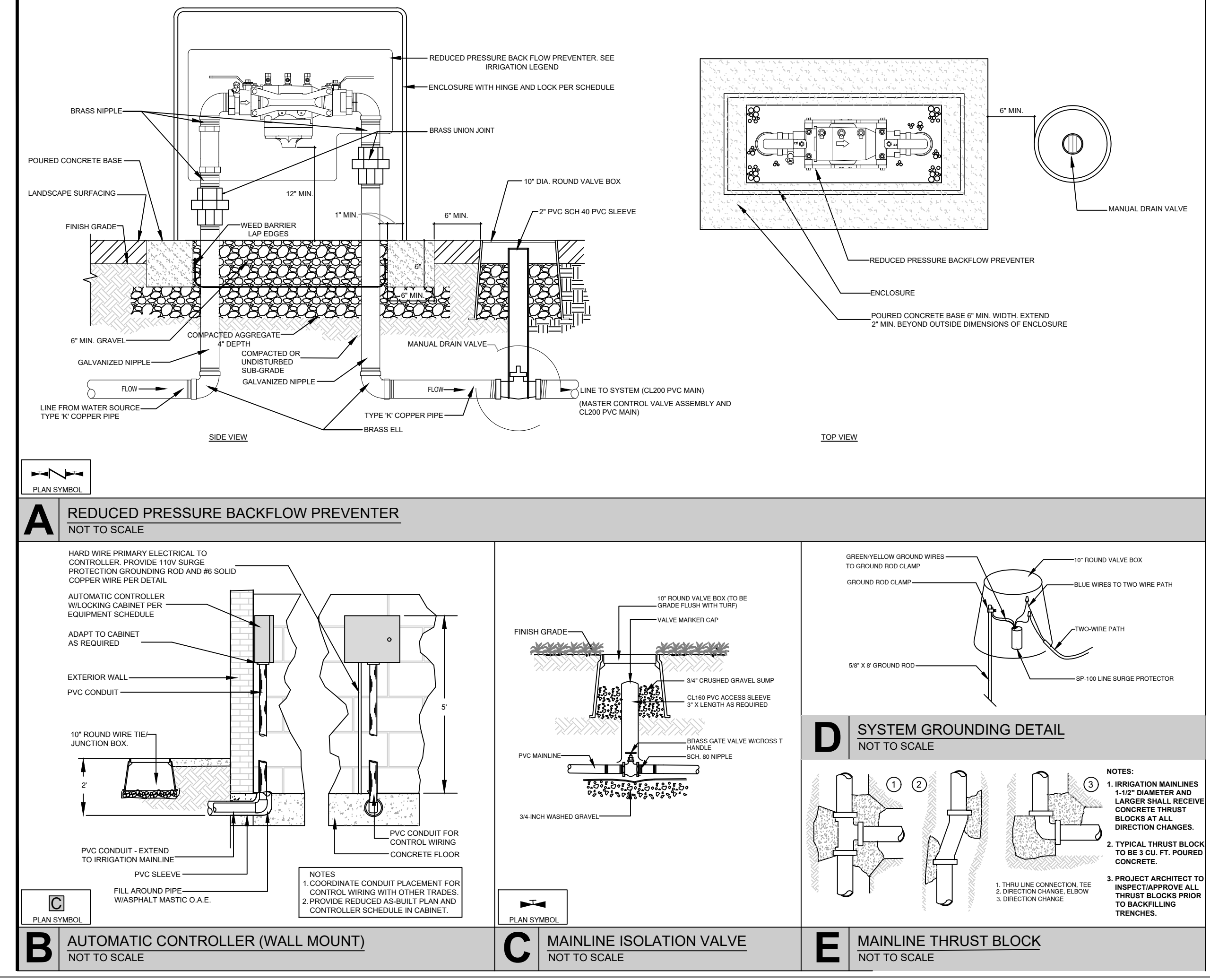
Irrigation Plan

**LS-3**

Project No. 23.012  
 The LKA Partners Incorporated



(SPACE INTENTIONALLY BLANK)



**LKA PARTNERS**  
INCORPORATED  
A Professional Corporation for Architecture and Planning  
430 North Tejon Street Suite 208  
Colorado Springs Colorado 80903  
tele: 719.473.8446 fax: 719.473.8448  
web: www.lkpartners.com

**William Guman**  
& Associates, L.P.  
LANDSCAPE ARCHITECTURE  
771 North Tejon Street  
Colorado Springs, CO 80903  
(719) 539-9700  
www.gumanltd.com  
bill@gumanltd.com

© Copyright 2024 The LKA Partners, Inc. This document and the information contained herein may not be reproduced or excerpted from without the express written permission of The LKA Partners, Inc. Unauthorized copying, disclosure or construction use are prohibited by copyright law.

**Meridian Ranch Fieldhouse**  
Rainbow Bridge Dr  
Peyton, CO 80831  
Meridian Service Metro District  
11886 Stapleton Drive  
Falcon, CO 80831



El Paso County  
Major Commercial Site  
Development Plan

Drawn: WFG GEM  
Checked: GEM  
Issued: 20 February 2024  
Revised:  
Revised:  
Final:

Irrigation Plan  
**LS-4**  
Project No. 23.012  
The LKA Partners Incorporated

