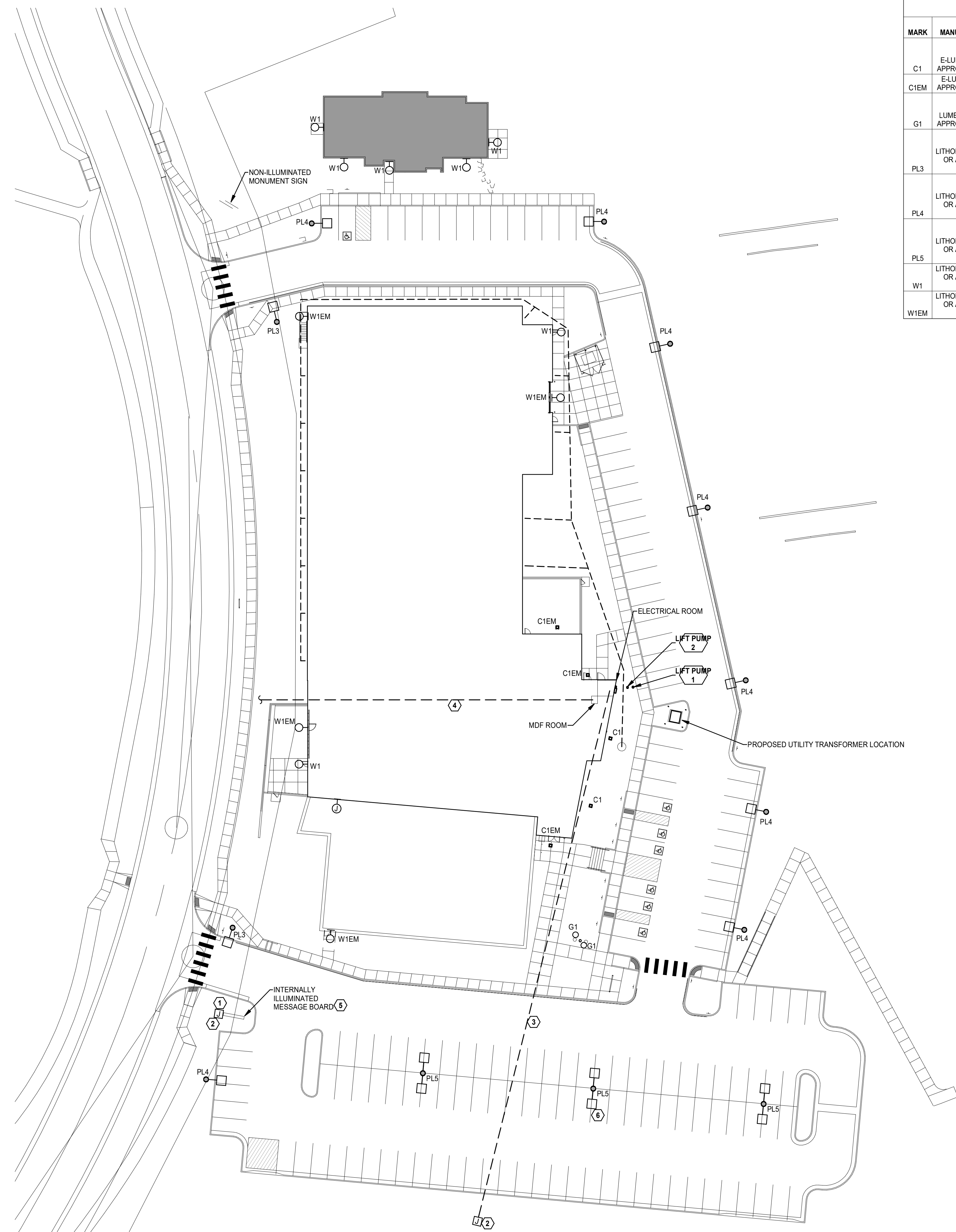


5/10/2024 10:38:29 AM



**ELECTRIAL SITE DEVELOPMENT PLAN**  
SCALE: 1" = 30'-0"

LUMINAIRE SCHEDULE - SITE										
MARK	MANUFACTURER	CATALOG NUMBER	LAMP			FINISH	MOUNTING	WATTAGE	VOLTAGE	DESCRIPTION
			QTY/TYP	CCT	LUMENS					
C1	E-LUMINAIRE OR APPROVED EQUAL	RCS1-DP-25-40K8-MV-WH-FSP-211	LED	4000K	3300	WHITE	RECESSED	22 VA	277V	16" SIDE SQUARE LOW GLARE RECESSED CANOPY FIXTURE WITH HIGH DURABILITY ALUMINUM HOUSING, TYPE 5 DISTRIBUTION, -40 DEG. C TO 60 DEG. C, SUITABLE FOR WET LOCATIONS COVERED CANOPY, 0-10V DIMMING DRIVER, OUTDOOR PHOTO MOTION SENSOR, 5 YEAR WARRANTY.
C1EM	E-LUMINAIRE OR APPROVED EQUAL	RCS1-DP-25-40K8-MV-WH-FSP-211-RBB	LED	4000K	3300	WHITE	RECESSED	22 VA	277V	SAME AS ABOVE, BUT PROVIDED WITH A REMOTE BATTERY BACK-UP FOR EMERGENCY LIGHTING.
G1	LUMENPULSE OR APPROVED EQUAL	LBIL-DO-120/277-40K-NS-CL-NO-FLH-SSB-RBO-ASL-HRS-UL	LED	4000K	4375	STAINLESS	IN-GRADE	60 VA	277V	10-1/4" DIA. X 12-5/8" IN-GROUND LED UPLIGHT, HIGH PERFORMANCE FIXTURE, DRIE OVER COMPLIANT, NARROW SPOT DISTRIBUTION, CLEAR LENS, NO DIMMING, -40 DEG. F TO 122 DEG. F, IP66, IK10 RATED, -3 DEG. TO +15 DEG. TILT, 360 DEG. ROTATION, 5 YEAR LIMITED WARRANTY.
PL3	LITHONIA LIGHTING OR APPROVED EQUAL	LED-P2-40K-70CRI-T3M-MVOLT-SP-A-NLTAIR2-PIRHN-DDBXD	LED	4000K	9762	DARK BRONZE	POLE ON 2.5' BASE	68 VA	277V	32.71" L X 14.26" W LED POLE LIGHT, SINGLE HEAD, DIE-CAST ALUMINUM HOUSING, TYPE 3 MEDIUM DISTRIBUTION, -40 DEG. C FOR WET LOCATIONS, IP66 RATED, WIRELESS ENABLED BI-LEVEL MOTION/AMBIENT SENSOR, 5 YEAR LIMITED WARRANTY.
PL4	LITHONIA LIGHTING OR APPROVED EQUAL	LED-P2-40K-70CRI-TFTM-MVOLT-S-PA-NLTAIR2-PIRHN-DDBXD	LED	4000K	9976	DARK BRONZE	POLE ON 2.5' BASE	68 VA	277V	SAME AS ABOVE BUT TYPE FORWARD THROW MEDIUM DISTRIBUTION.
PL5	LITHONIA LIGHTING OR APPROVED EQUAL	LED-P2-40K-70CRI-T5W-MVOLT-SP-A-NLTAIR2-PIRHN-DDBXD	LED	4000K	9976	DARK BRONZE	POLE ON 2.5' BASE	136 VA	277V	SAME AS ABOVE BUT DOUBLE HEAD FIXTURE WITH TYPE 5 WIDE DISTRIBUTION.
W1	LITHONIA LIGHTING OR APPROVED EQUAL	WDGE3	LED	4000K	8779	DARK BRONZE	WALL	60 VA	277	9" X 18" WALL MOUNT LED FIXTURE, DIE-CAST ALUMINUM HOUSING ZERO UPLIGHT TYPE DISTRIBUTION, -40 DEG. C MINIMUM AMBIENT, IP66, WIRELESS ENABLED BI-LEVEL MOTION/AMBIENT SENSOR, 5 YEAR LIMITED WARRANTY.
W1EM	LITHONIA LIGHTING OR APPROVED EQUAL	LED-P2-40K-70CRI-R4-MVOLT-SR-M-NLTAIR2-PIR-DDBXD	LED	4000K	8779	DARK BRONZE	WALL	60 VA	277	SAME AS ABOVE BUT EQUIPPED WITH AN EMERGENCY BATTERY BACK-UP FOR EMERGENCY LIGHTING.

**KEYED NOTES**

- 1 PROVIDE TWO CONDUITS: ONE (1) 1" CONDUIT WITH 2#4-#4G FROM THE ELECTRICAL ROOM PANEL MRL1, AND ONE (1) 1" CONDUIT WITH THE APPROPRIATE DATA CABLE FROM THE MDF ROOM TO THE SIGN JUNCTION BOX. COORDINATE EXACT DATA CABLE REQUIREMENTS WITH THE SIGN MANUFACTURER PRIOR TO ROUGH-IN. PROVIDE HORSE RATED SWITCH FOR DISCONNECT.
- 2 PROVIDE AN IN-GRADE POWER JUNCTION/PULL BOX, QUAZITE OR EQUAL WITH PENTAHEAD BOLTS FOR SECURITY. LABEL AS "ELECTRIC".
- 3 PROVIDE AN EMPTY 4" CONDUIT WITH PULLSTRING FROM THE ELECTRICAL ROOM TO JUNCTION BOX FOR FUTURE USE.
- 4 PROVIDE AN EMPTY 3" CONDUIT WITH PULLSTRING FROM TELECOM DEMARCATION TO MDF ROOM. COORDINATE WITH TELECOM TRADE PRIOR TO ROUGH-IN.
- 5 DAKTRONIKS DOUBLE SIDED ELECTRONIC MESSAGE CENTER. PROVIDE PHOTOCELL AND DIMMER SWITCH FOR CONTROL AND TIE TO LIGHTING CONTROL PANEL.
- 6 MOVE FIXTURE 5' WEST TO AVOID EXISTING UTILITY EASEMENT WHEN NECESSARY.

**DPE - SHEET INDEX**

SHEET	TITLE
DPE1	ELECTRICAL SITE DEVELOPMENT PLAN
DPE2	DEVELOPMENTAL SITE PHOTOMETRIC PLAN
DPE3	CUT SHEETS

**Meridian Ranch Fieldhouse**

Tax Parcel Schedule Number(s)- 4220303009 & 4220303093  
Phase 1 - Fieldhouse, 10559 Rainbow Bridge Dr  
Phase 2 - Office Building, 10575 Rainbow Bridge Dr  
Peyton, CO 80831  
Meridian Service Metro District  
11886 Stapleton Drive  
Falcon, CO 80831

**LKA PARTNERS**  
INCORPORATED  
A Professional Corporation for Architecture and Planning  
**PLANT**  
ENGINEERING CONSULTANTS  
300 WEST FALCON BLVD. SUITE 1000 FALCON, COLORADO 80804  
430 North Tejon Street Suite 208  
Colorado Springs Colorado 80903  
tele: 719.473.8446 fax: 719.473.8448  
web: www.lkpartners.com

**El Paso County**  
Major Commercial Site  
Development Plan

Drawn: CAO/JDH  
Checked: MPP  
Issued: 05/10/2024  
Revised:

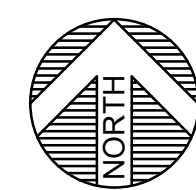
**ELECTRICAL SITE  
DEVELOPMENT PLAN**

**DPE1**  
Project No. 23085  
The LKA Partners Incorporated

© Copyright 2024 The LKA Partners, Inc. This document and the information contained herein may not be reproduced or excerpted from without the express written permission of The LKA Partners, Inc. Unauthorized copying, disclosure or construction use are prohibited by copyright law.

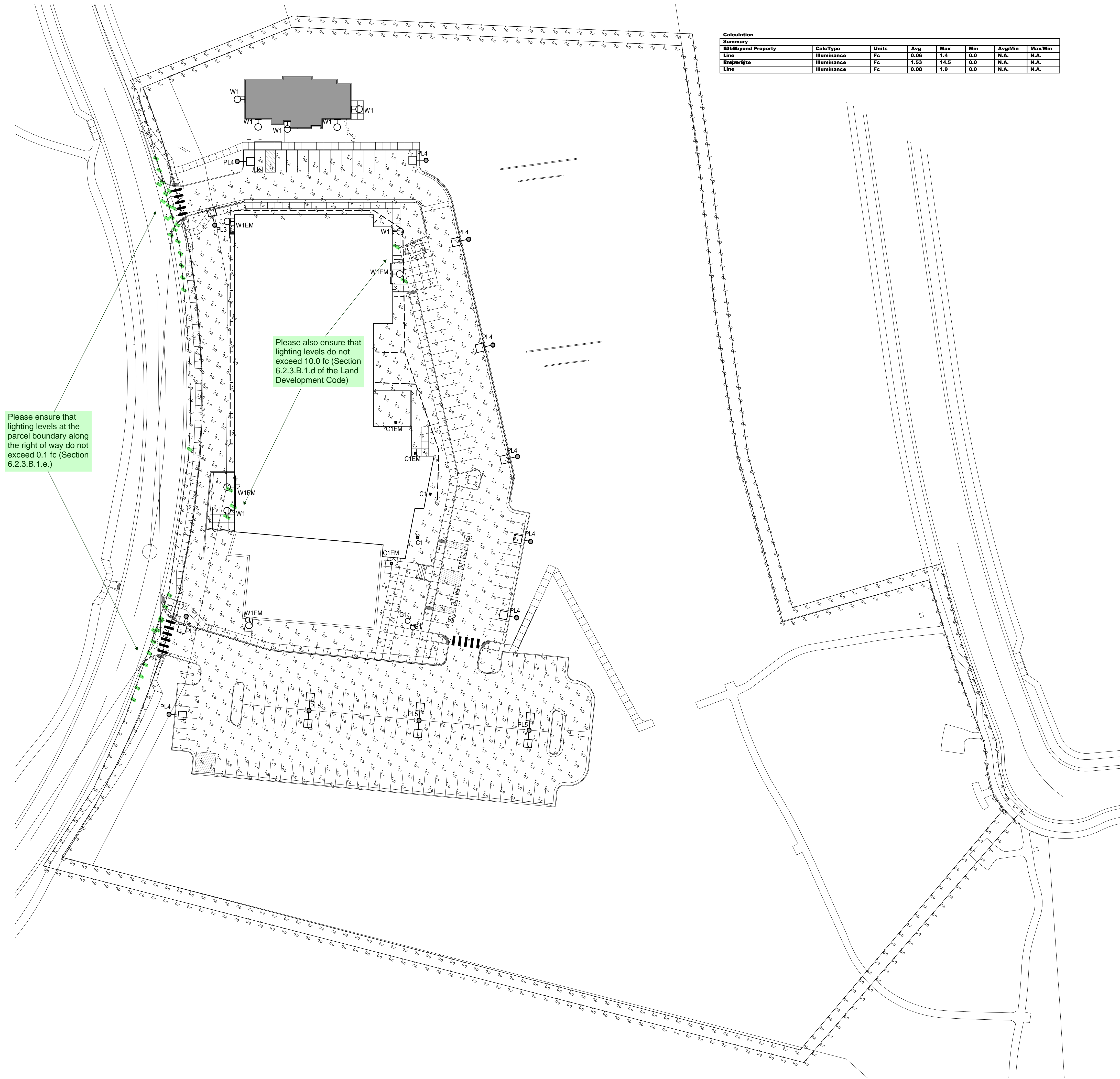


5/10/2024 10:38:29 AM



### DEVELOPMENTAL SITE PHOTOMETRIC PLAN

SCALE: 1" = 40'-0"



Calculation Summary							
Beyond Property	Calc Type	Units	Avg	Max	Min	Avg/Min	Max/Min
Line	Illuminance	Fc	0.96	1.4	0.0	N.A.	N.A.
Endp/Byte	Illuminance	Fc	1.53	14.5	0.0	N.A.	N.A.
Line	Illuminance	Fc	0.98	1.9	0.0	N.A.	N.A.

## Meridian Ranch Fieldhouse

Tax Parcel Schedule Number(s)- 4220303009 & 4220303093  
 Phase 1 - Fieldhouse, 10559 Rainbow Bridge Dr  
 Phase 2 - Office Building, 10575 Rainbow Bridge Dr  
 Peyton, CO 80831  
 Meridian Service Metro District  
 11886 Stapleton Drive  
 Falcon, CO 80831

### El Paso County Major Commercial Site Development Plan

Drawn: CAO/JDH  
 Checked: MPP  
 Issued: 05/10/2024  
 Revised:

### DEVELOPMENTAL SITE PHOTOMETRIC PLAN

# DPE2

Project No. 23085  
 The LKA Partners Incorporated

**LKA PARTNERS**  
 INCORPORATED  
 A Professional Corporation for Architecture and Planning

**PLANT**  
 ENGINEERING CONSULTANTS  
300 WEST FALCON STREET, COLORADO SPRINGS CO 80903

430 North Tejon Street Suite 208  
 Colorado Springs Colorado 80903  
 tele: 719.473.8446 fax: 719.473.8448  
 web: www.lkpartners.com

© Copyright 2024 The LKA Partners, Inc. This document and the information contained herein may not be reproduced or excerpted from without the express written permission of The LKA Partners, Inc. Unauthorized copying, disclosure or construction use are prohibited by copyright law.



TYPES C1,C1EM

Technical Specifications

Date: \_\_\_\_\_ Location: \_\_\_\_\_  
 Type: \_\_\_\_\_ Project: \_\_\_\_\_  
 Catalog # \_\_\_\_\_

**CENTURY DP Series**  
Low Glare Recessed Canopy

**Product Description**  
The CENTURY DP Series LED Luminaire has a form factor designed to exceed standards for all recessed canopy applications. The CENTURY DP protrudes only 1.27" from the surface when recessed into a soffit. The CENTURY DP Series features low glare optics delivering between 2,800 to 8,200 lumens while only consuming 21 to 53 watts. Delivering up to 150 lumens per watt, it's the ideal canopy luminaire.

**Applications:** Recessed canopy soffits, Low-mid bay general lighting

- Product Performance**
- Wattage Range: 21W-53W
  - Input Voltage: 120-277V or 277-480V
  - CCT: 3000K, 4000K or 5000K (Amber and custom CCT available)
  - CRI: Minimum 80 CRI standard (custom CRI available)
  - UL1598 Compliant
  - 10kV Surge Suppression available
  - 0-10V Dimmable Power Supply
  - Available Sensor: Wattsense FSP 211
  - Custom sizes available, consult factory
  - 5 year Warranty

Key Data	
Lumen Range	2,800-8,200
Wattage Range	21-53
Efficacy Range	Up to 157 LPW
Fixture Life	L70@25°C > 100,000 hours
Dimensions	16.0" x 16.0" x 1.27"
Weight	8.0-9.75 lbs.

**Ordering Guide**

Example: RCSI-OP2500K-MV-WH

Series	Distribution	Output Type	CCT Color	Voltage	Fixture color
RCSI	DP - Diffused Canopy	25 - 3,300 Lumens, 21W	300K - 3000K, 80 CRI	NV - 120-277V	WH - White
		45 - 4,100 Lumens, 27W	40K - 4000K, 80 CRI	BV - Bronze	
		60 - 6,800 Lumens, 44W	50K - 5000K, 80 CRI	HV - 277-480V	SV - Silver
		80 - 8,200 Lumens, 53W	AMR - Amber, Special Order		BL - Black
					RAL - Custom Color (Specify RAL)

**Options**

OC1 - Integrated Occupancy Sensor (120-277VAC), Wattsense FSP211

OC2 - Sensor FSP-L2 Lens, 300°, 48" Dia. Coverage at 8' Height or 72" Dia. Coverage at 12' Height

OC3 - Sensor FSP-L3 Lens, 300°, 48" Dia. Coverage at 20' Height

OC4 - Sensor FSP-L7 Lens, 300°, 100" Dia. Coverage at 40' Height

OC5 - 277V, 10kV Surge Suppression

OC6 - 480V, 10kV Surge Suppression

OC7 - See [Link] spec for Remote Battery Backup Int'l

Custom factory for DLC listings

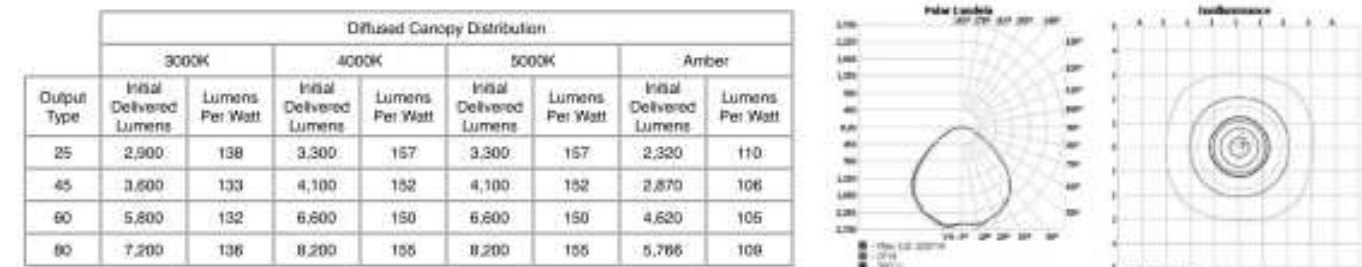
Technical Specifications

**CENTURY DP Series**

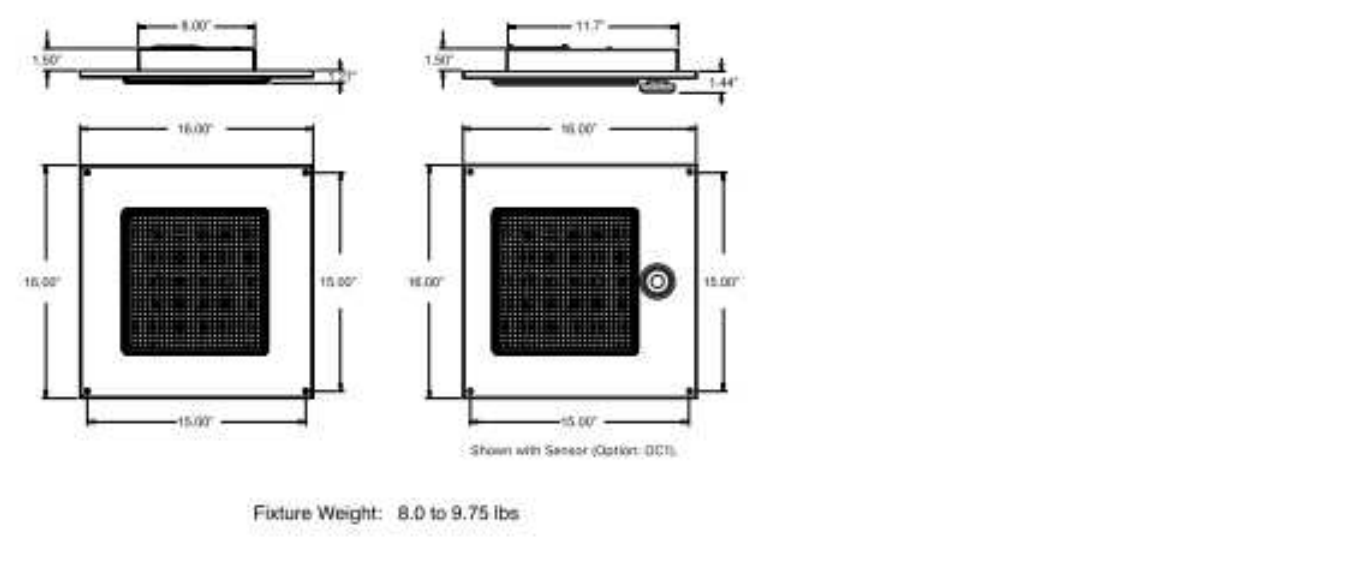
- Product Specifications**
- Construction & Materials
    - Aluminum housing with multi stage pre-treatment and high durability
    - TGIC powder coat finish
    - UV Stabilized single PMMA Lens - Tamper resistant
    - Robust low profile design
    - Recessed mount covered canopy only
  - Testing & Certifications
    - e-ETL listed
    - UL1598, CSA STD 22.2 compliant
    - Suitable for Wet Locations Covered Canopy
    - RoHS Compliant
    - Driver complies with FCC Part 15 Class B/EN55015, EN1000-3-2 Class C, EN61000-3-3
    - Can meet AFRA Buy America requirements as required
  - Optical System
    - DP Lens - Type V Low Glare Medium Canopy Lens
  - Electrical System
    - Input Voltage: 120-277V or 277-480V
    - Power Factor: > 0.9
    - Total Harmonic Distortion: <20%
    - Operating Temperature Range: -40°C to 60°C

**Photometry**

All published photometric testing data is performed to IESNA LM79-08 standards by a NVLAP accredited laboratory. To obtain an IES file specific to your project contact sales@luminaire.com.



The information in this document is subject to change without notice.



TYPES PL3, PL4, PL5



- Specifications**
- EPA: 0.02 ft<sup>2</sup> (0.003 m<sup>2</sup>)
  - Length: 32.71" (831mm)
  - Width: 14.26" (362mm)
  - Height H1: 7.88" (200mm)
  - Height H2: 2.73" (69mm)
  - Weight: 34 lbs (15.4kg)

**Introduction**

The modern styling of the D-Series features a highly refined aesthetic that blends seamlessly with its environment. The D-Series offers the benefits of the latest in LED technology into a high performance, high efficacy, long-life luminaire.

The photometric performance results in sites with excellent uniformity, greater pole spacing and lower power density. D-Series outstanding photometry aids in reducing the number of poles required in area lighting applications with typical energy savings of 65% and expected service life of over 100,000 hours.

**Ordering Information** EXAMPLE: DSX1 LED P7 40K 70CRI T3M MVOLT SPA NLTAR2 PIRNH DBXB

Series	LED	Color Temperature	Color Rendering Index	Architecture	Voltage	Mounting
DSX1 LED	Forward optics	(See section 7.0 for details)	70CRI	AMR - Automotive lens only	T3M - Type 3 medium	MVOLT (120V-277V)
	P1	30K	3000K	70CRI	T1S - Spot 1/2	SPK - Square pole mounting (48" dia)
	P2	40K	4000K	70CRI	T3M - Type 3 medium	SPK - Square pole mounting (48" dia)
	P3	50K	5000K	70CRI	T3M - Type 3 medium	SPK - Square pole mounting (48" dia)
	P4	50K	5000K	70CRI	T3M - Type 3 medium	SPK - Square pole mounting (48" dia)
	P5	50K	5000K	70CRI	T3M - Type 3 medium	SPK - Square pole mounting (48" dia)
	P6	50K	5000K	70CRI	T3M - Type 3 medium	SPK - Square pole mounting (48" dia)
	P7	40K	4000K	70CRI	T3M - Type 3 medium	SPK - Square pole mounting (48" dia)
	P8	40K	4000K	70CRI	T3M - Type 3 medium	SPK - Square pole mounting (48" dia)
	P9	40K	4000K	70CRI	T3M - Type 3 medium	SPK - Square pole mounting (48" dia)
	P10	40K	4000K	70CRI	T3M - Type 3 medium	SPK - Square pole mounting (48" dia)
	P11	40K	4000K	70CRI	T3M - Type 3 medium	SPK - Square pole mounting (48" dia)
	P12	40K	4000K	70CRI	T3M - Type 3 medium	SPK - Square pole mounting (48" dia)
	P13	40K	4000K	70CRI	T3M - Type 3 medium	SPK - Square pole mounting (48" dia)
	P14	40K	4000K	70CRI	T3M - Type 3 medium	SPK - Square pole mounting (48" dia)
	P15	40K	4000K	70CRI	T3M - Type 3 medium	SPK - Square pole mounting (48" dia)
	P16	40K	4000K	70CRI	T3M - Type 3 medium	SPK - Square pole mounting (48" dia)
	P17	40K	4000K	70CRI	T3M - Type 3 medium	SPK - Square pole mounting (48" dia)
	P18	40K	4000K	70CRI	T3M - Type 3 medium	SPK - Square pole mounting (48" dia)
	P19	40K	4000K	70CRI	T3M - Type 3 medium	SPK - Square pole mounting (48" dia)
	P20	40K	4000K	70CRI	T3M - Type 3 medium	SPK - Square pole mounting (48" dia)
	P21	40K	4000K	70CRI	T3M - Type 3 medium	SPK - Square pole mounting (48" dia)
	P22	40K	4000K	70CRI	T3M - Type 3 medium	SPK - Square pole mounting (48" dia)
	P23	40K	4000K	70CRI	T3M - Type 3 medium	SPK - Square pole mounting (48" dia)
	P24	40K	4000K	70CRI	T3M - Type 3 medium	SPK - Square pole mounting (48" dia)
	P25	40K	4000K	70CRI	T3M - Type 3 medium	SPK - Square pole mounting (48" dia)
	P26	40K	4000K	70CRI	T3M - Type 3 medium	SPK - Square pole mounting (48" dia)
	P27	40K	4000K	70CRI	T3M - Type 3 medium	SPK - Square pole mounting (48" dia)
	P28	40K	4000K	70CRI	T3M - Type 3 medium	SPK - Square pole mounting (48" dia)
	P29	40K	4000K	70CRI	T3M - Type 3 medium	SPK - Square pole mounting (48" dia)
	P30	40K	4000K	70CRI	T3M - Type 3 medium	SPK - Square pole mounting (48" dia)
	P31	40K	4000K	70CRI	T3M - Type 3 medium	SPK - Square pole mounting (48" dia)
	P32	40K	4000K	70CRI	T3M - Type 3 medium	SPK - Square pole mounting (48" dia)
	P33	40K	4000K	70CRI	T3M - Type 3 medium	SPK - Square pole mounting (48" dia)
	P34	40K	4000K	70CRI	T3M - Type 3 medium	SPK - Square pole mounting (48" dia)
	P35	40K	4000K	70CRI	T3M - Type 3 medium	SPK - Square pole mounting (48" dia)
	P36	40K	4000K	70CRI	T3M - Type 3 medium	SPK - Square pole mounting (48" dia)
	P37	40K	4000K	70CRI	T3M - Type 3 medium	SPK - Square pole mounting (48" dia)
	P38	40K	4000K	70CRI	T3M - Type 3 medium	SPK - Square pole mounting (48" dia)
	P39	40K	4000K	70CRI	T3M - Type 3 medium	SPK - Square pole mounting (48" dia)
	P40	40K	4000K	70CRI	T3M - Type 3 medium	SPK - Square pole mounting (48" dia)
	P41	40K	4000K	70CRI	T3M - Type 3 medium	SPK - Square pole mounting (48" dia)
	P42	40K	4000K	70CRI	T3M - Type 3 medium	SPK - Square pole mounting (48" dia)
	P43	40K	4000K	70CRI	T3M - Type 3 medium	SPK - Square pole mounting (48" dia)
	P44	40K	4000K	70CRI	T3M - Type 3 medium	SPK - Square pole mounting (48" dia)
	P45	40K	4000K	70CRI	T3M - Type 3 medium	SPK - Square pole mounting (48" dia)
	P46	40K	4000K	70CRI	T3M - Type 3 medium	SPK - Square pole mounting (48" dia)
	P47	40K	4000K	70CRI	T3M - Type 3 medium	SPK - Square pole mounting (48" dia)
	P48	40K	4000K	70CRI	T3M - Type 3 medium	SPK - Square pole mounting (48" dia)
	P49	40K	4000K	70CRI	T3M - Type 3 medium	SPK - Square pole mounting (48" dia)
	P50	40K	4000K	70CRI	T3M - Type 3 medium	SPK - Square pole mounting (48" dia)
	P51	40K	4000K	70CRI	T3M - Type 3 medium	SPK - Square pole mounting (48" dia)
	P52	40K	4000K	70CRI	T3M - Type 3 medium	SPK - Square pole mounting (48" dia)
	P53	40K	4000K	70CRI	T3M - Type 3 medium	SPK - Square pole mounting (48" dia)
	P54	40K	4000K	70CRI	T3M - Type 3 medium	SPK - Square pole mounting (48" dia)
	P55	40K	4000K	70CRI	T3M - Type 3 medium	SPK - Square pole mounting (48" dia)
	P56	40K	4000K	70CRI	T3M - Type 3 medium	SPK - Square pole mounting (48" dia)
	P57	40K	4000K	70CRI	T3M - Type 3 medium	SPK - Square pole mounting (48" dia)
	P58	40K	4000K	70CRI	T3M - Type 3 medium	SPK - Square pole mounting (48" dia)
	P59	40K	4000K	70CRI	T3M - Type 3 medium	SPK - Square pole mounting (48" dia)
	P60	40K	4000K	70CRI	T3M - Type 3 medium	SPK - Square pole mounting (48" dia)
	P61	40K	4000K	70CRI	T3M - Type 3 medium	SPK - Square pole mounting (48" dia)
	P62	40K	4000K	70CRI	T3M - Type 3 medium	SPK - Square pole mounting (48" dia)
	P63	40K	4000K	70CRI	T3M - Type 3 medium	SPK - Square pole mounting (48" dia)
	P64	40K	4000K	70CRI	T3M - Type 3 medium	SPK - Square pole mounting (48" dia)
	P65	40K	4000K	70CRI	T3M - Type 3 medium	SPK - Square pole mounting (48" dia)
	P66	40K	4000K	70CRI	T3M - Type 3 medium	SPK - Square pole mounting (48" dia)
	P67	40K	4000K	70CRI	T3M - Type 3 medium	SPK - Square pole mounting (48" dia)
	P68	40K	4000K	70CRI	T3M - Type 3 medium	SPK - Square pole mounting (48" dia)
	P69	40K	4000K	70CRI	T3M - Type 3 medium	SPK - Square pole mounting (48" dia)
	P70	40K	4000K	70CRI	T3M - Type 3 medium	SPK - Square pole mounting (48" dia)
	P71	40K	4000K	70CRI	T3M - Type 3 medium	SPK - Square pole mounting (48" dia)
	P72	40K	4000K	70CRI	T3M - Type 3 medium	SPK - Square pole mounting (48" dia)
	P73	40K	4000K	70CRI	T3M - Type 3 medium	SPK - Square pole mounting (48" dia)
	P74	40K	4000K	70CRI	T3M - Type 3 medium	SPK - Square pole mounting (48" dia)
	P75	40K	4000K	70CRI	T3M - Type 3 medium	SPK - Square pole mounting (48" dia)
	P76	40K	4000K	70CRI	T3M - Type 3 medium	SPK - Square pole mounting (48" dia)
	P77	40K	4000K	70CRI	T3M - Type 3 medium	SPK - Square pole mounting (48" dia)
	P78	40K	4000K	70CRI	T3M - Type 3 medium	SPK - Square pole mounting (48" dia)
	P79	40K	4000K	70CRI	T3M - Type 3 medium	SPK - Square pole mounting (48" dia)
	P80	40K	4000K	70CRI	T3M - Type 3 medium	SPK - Square pole mounting (48" dia)
	P81	40K	4000K	70CRI	T3M - Type 3 medium	SPK - Square pole mounting (48" dia)
	P82	40K	4000K	70CRI	T3M - Type 3 medium	SPK - Square pole mounting (48" dia)
	P83	40K	4000K	70CRI	T3M - Type 3 medium	SPK - Square pole mounting (48" dia)
	P84	40K	4000K	70CRI	T3M - Type 3 medium	SPK - Square pole mounting (48" dia)
	P85	40K	4000K	70CRI	T3M - Type 3 medium	SPK - Square pole mounting (48" dia)
	P86	40K	4000K	70CRI	T3M - Type 3 medium	SPK - Square pole mounting (48" dia)
	P87	40K	4000K	70CRI	T3M - Type 3 medium	SPK - Square pole mounting (48" dia)
	P88	40K	4000K	70CRI	T3M - Type 3 medium	SPK - Square pole mounting (48" dia)
	P89	40K	4000K	70CRI	T3M - Type 3 medium	SPK - Square pole mounting (48" dia)
	P90	40K	4000K	70CRI	T3M - Type 3 medium	SPK - Square pole mounting (48" dia)
	P91	40K	4000K	70CRI	T3M - Type 3 medium	SPK - Square pole mounting (48" dia)
	P92	40K	4000K	70CRI	T3M - Type 3 medium	SPK - Square pole mounting (48" dia)
	P93	40K	4000K	70CRI	T3M - Type 3 medium	SPK - Square pole mounting (48" dia)
	P94	40K	4000K	70CRI	T3M - Type 3 medium	SPK - Square pole mounting (48" dia)
	P95	40K	4000K	70CRI	T3M - Type 3 medium	SPK - Square pole mounting (48" dia)
	P96	40K	4000K	70CRI	T3M - Type 3 medium	SPK - Square pole mounting (48" dia)
	P97	40K	4000K	70CRI	T3M - Type 3 medium	SPK - Square pole mounting (48" dia)
	P98	40K	4000K	70CRI	T3M - Type 3 medium	SPK - Square pole mounting (48" dia)
	P99	40K	4000K	70CRI	T3M - Type 3 medium	SPK - Square pole mounting (48" dia)
	P100	40K	4000K	70CRI	T3M - Type 3 medium	SPK - Square pole mounting (48" dia)

Control options	Other options	Stock mount
<b>Shipped installed</b>	<b>Shipped separately</b>	<b>Shipped separately</b>
OC1 - Integrated Occupancy Sensor (120-277VAC), Wattsense FSP211	OC2 - Sensor FSP-L2 Lens, 300°, 48" Dia. Coverage at 8' Height or 72" Dia. Coverage at 12' Height	OC3 - Sensor FSP-L3 Lens, 300°, 48" Dia. Coverage at 20' Height
OC4 - Sensor FSP-L7 Lens, 300°, 100" Dia. Coverage at 40' Height	OC5 - 277V, 10kV Surge Suppression	OC6 - 480V, 10kV Surge Suppression
OC7 - See [Link] spec for Remote Battery Backup Int'l		

TYPE G1

Specification Sheet

**lumenbeam**  
Inground Large LBL

WHITE AND STATIC COLORS

Project Name: \_\_\_\_\_ City: \_\_\_\_\_

Type: \_\_\_\_\_ Catalog / Part Number: \_\_\_\_\_

**Photometric Summary**

Beam Angle	Delivered output (lm)	Intensity (peak cd)	Power (W)
6°x6°	1695	83,330	30 W
9°x9°	4371	63,336	60 W
15°x15°	6929	21,162	60 W
25°x25°	10,611	10,611	60 W
35°x35°	14,157	6,099	60 W

**Description**

The lumenbeam Inground Large is a high performance, ground recessed LED projector designed to solve a range of inground lighting challenges with a choice of optics, trim, lenses and control options. The plug and play design simplifies installation, protecting the system from water infiltration and ensuring long-lasting performance. Built with robust, high-quality materials that are resistant to harsh environments, the