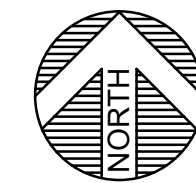
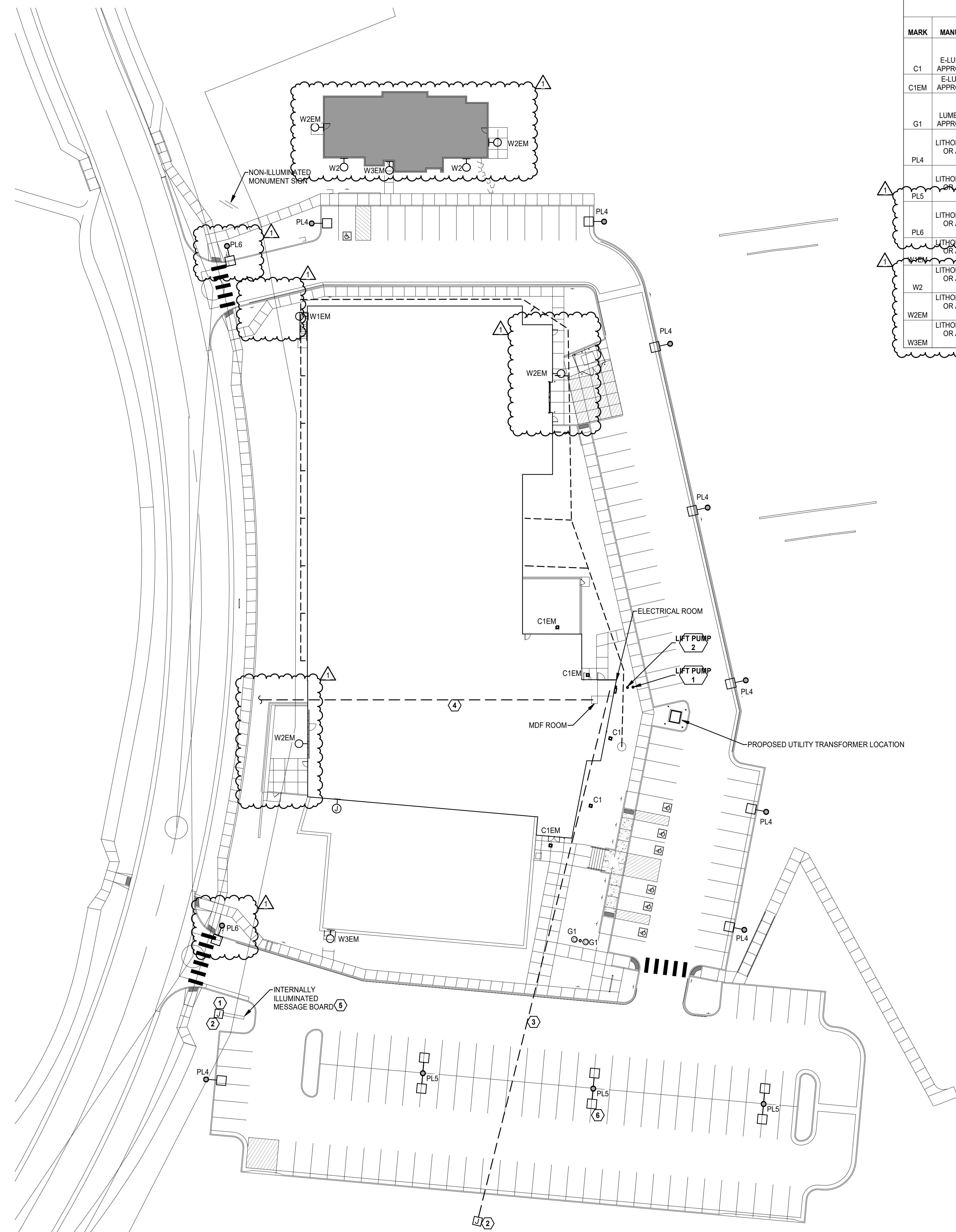


6/18/2024 5:22:25 PM



**ELECTRIAL SITE DEVELOPMENT PLAN**

SCALE: 1" = 30'-0"



LUMINAIRE SCHEDULE - SITE										
MARK	MANUFACTURER	CATALOG NUMBER	QTY/TYPE	LAMP CCT	LUMENS	FINISH	MOUNTING	WATTAGE	VOLTAGE	DESCRIPTION
C1	E-LUMINAIRE OR APPROVED EQUAL	RCS1-DP-25-40K8-MV-WH-FSP-211	LED	4000K	3300	WHITE	RECESSED	22 VA	277V	16" SIDE SQUARE LOW GLARE RECESSED CANOPY FIXTURE WITH HIGH DURABILITY ALUMINUM HOUSING, TYPE 5 DISTRIBUTION, -40 DEG. C TO 60 DEG. C, SUITABLE FOR WET LOCATIONS COVERED CANOPY, 0-10V DIMMING DRIVER, OUTDOOR PHOTO MOTION SENSOR, 5 YEAR WARRANTY.
C1EM	E-LUMINAIRE OR APPROVED EQUAL	RCS1-DP-25-40K8-MV-WH-FSP-211-RBB	LED	4000K	3300	WHITE	RECESSED	22 VA	277V	SAME AS ABOVE, BUT PROVIDED WITH A REMOTE BATTERY BACK-UP FOR EMERGENCY LIGHTING.
G1	LUMENPULSE OR APPROVED EQUAL	LBIL-DO-120/277-40K-NS-CL-NO-FLH-SSB-RBO-ASL-HRS-UL	LED	4000K	4375	STAINLESS	IN-GRADE	60 VA	277V	10-1/4" DIA. X 12-5/8" H IN-GROUND LED UPLIGHT, HIGH PERFORMANCE FIXTURE, DRIE OVER COMPLIANT, NARROW SPOT DISTRIBUTION, CLEAR LENS, NO DIMMING, -40 DEG. F TO 122 DEG. F, IP66, IK10 RATED, -3 DEG. TO +15 DEG. TILT, 360 DEG. ROTATION, 5 YEAR LIMITED WARRANTY.
PL4	LITHONIA LIGHTING OR APPROVED EQUAL	LED-P2-40K-70CRI-TFTM-MVOLT-S-PA-NLTAIR2-PIRHN-DOBXD-POLE-SSS-18-4C-DM19AS-DOBXD	LED	4000K	9976	DARK BRONZE	POLE ON 2" BASE	68 VA	277V	32.71" L X 14.26" W X 2.73" H DECORATIVE AREA LUMINAIRE, 0-10V DIMMING, TYPE FORWARD THROW MEDIUM DISTRIBUTION, NLIGHT PHOTOCELL WIRELESS CONTROLS, ZERO UPLIGHT, IP66 AND WET LOCATION LISTED, 5 YEAR WARRANTY.
PL5	LITHONIA LIGHTING OR APPROVED EQUAL	LED-P2-40K-70CRI-T5W-MVOLT-SP-PA-NLTAIR2-PIRHN-DOBXD-POLE-SSS-18-4C-DM28AS-DOBXD	LED	4000K	19,952	DARK BRONZE	POLE ON 2" BASE	136 VA	277V	SAME AS ABOVE BUT DOUBLE HEAD FIXTURE WITH TYPE 5 WIDE DISTRIBUTION.
PL6	LITHONIA LIGHTING OR APPROVED EQUAL	LED-P2-40K-70CRI-RCCO-MVOLT-SPA-NLTAIR2-PIRHN-DOBXD-POLE-SSS-18-4C-DM19AS-DOBXD	LED	4000K	4,352	DARK BRONZE	POLE ON 2" BASE	45 VA	277V	26.18" L X 14.06" W X 2.26" H DECORATIVE AREA LUMINAIRE, 0-10V DIMMING, TYPE RIGHT CORNER CUTOFF DISTRIBUTION, NLIGHT PHOTOCELL WIRELESS CONTROLS, ZERO UPLIGHT, IP66 AND WET LOCATION LISTED, 5 YEAR WARRANTY.
W2EM	LITHONIA LIGHTING OR APPROVED EQUAL	LED-P4-40K-70CRI-T2M-MVOLT-SR-M-NLTAIR2-PIR-DOBXD	LED	4000K	7,569	DARK BRONZE	WALL	68 VA	277V	9" X 18" W WALL MOUNT LED FIXTURE, ZERO UPLIGHT TYPE 2 DISTRIBUTION, -40 DEG. C MINIMUM AMBIENT, IP66, WIRELESS ENABLED BI-LEVEL MOTION/AMBIENT SENSOR, 5 YEAR LIMITED WARRANTY.
W2	LITHONIA LIGHTING OR APPROVED EQUAL	LED-P4-40K-70CRI-T2M-MVOLT-SR-M-NLTAIR2-PIR-DOBXD	LED	4000K	3,881	DARK BRONZE	WALL	47 VA	277V	9" X 11.5" W WALL MOUNT LED FIXTURE, ZERO UPLIGHT TYPE 2 MEDIUM DISTRIBUTION, -40 DEG. C MINIMUM AMBIENT, IP66, WIRELESS ENABLED BI-LEVEL MOTION/AMBIENT SENSOR, 5 YEAR LIMITED WARRANTY.
W2EM	LITHONIA LIGHTING OR APPROVED EQUAL	LED-P4-40K-70CRI-T2M-MVOLT-SR-M-E20WC-NLTAIR2-PIR-DOBXD	LED	4000K	3,881	DARK BRONZE	WALL	47 VA	277V	SAME AS ABOVE BUT EQUIPPED WITH AN EMERGENCY BATTERY BACK-UP FOR EMERGENCY LIGHTING.
W3EM	LITHONIA LIGHTING OR APPROVED EQUAL	LED-P4-40K-70CRI-T4M-MVOLT-SR-M-E20WC-NLTAIR2-PIR-DOBXD	LED	4000K	3,799	DARK BRONZE	WALL	47 VA	277V	SAME AS ABOVE BUT TYPE 4 MEDIUM DISTRIBUTION AND EQUIPPED WITH AN EMERGENCY BATTERY BACK-UP FOR EMERGENCY LIGHTING.

**KEYED NOTES**

- 1 PROVIDE TWO CONDUITS: ONE (1) 1" CONDUIT WITH 2#4-#4G FROM THE ELECTRICAL ROOM PANEL MRL1, AND ONE (1) 1" CONDUIT WITH THE APPROPRIATE DATA CABLE FROM THE MDF ROOM TO THE SIGN JUNCTION BOX. COORDINATE EXACT DATA CABLE REQUIREMENTS WITH THE SIGN MANUFACTURER PRIOR TO ROUGH-IN. PROVIDE HORSE RATED SWITCH FOR DISCONNECT.
- 2 PROVIDE AN IN-GRADE POWER JUNCTION/PULL BOX, QUAZITE OR EQUAL WITH PENTAHEAD BOLTS FOR SECURITY. LABEL AS "ELECTRIC".
- 3 PROVIDE AN EMPTY 4" CONDUIT WITH PULLSTRING FROM THE ELECTRICAL ROOM TO JUNCTION BOX FOR FUTURE USE.
- 4 PROVIDE AN EMPTY 3" CONDUIT WITH PULLSTRING FROM TELECOM DEMARCATION TO MDF ROOM. COORDINATE WITH TELECOM TRADE PRIOR TO ROUGH-IN.
- 5 DAKTRONIKS DOUBLE SIDED ELECTRONIC MESSAGE CENTER. PROVIDE PHOTOCELL AND DIMMER SWITCH FOR CONTROL AND TIE TO LIGHTING CONTROL PANEL.
- 6 MOVE FIXTURE 5' WEST TO AVOID EXISTING UTILITY EASEMENT WHEN NECESSARY.

**DPE - SHEET INDEX**

SHEET	TITLE
DPE1	ELECTRICAL SITE DEVELOPMENT PLAN
DPE2	DEVELOPMENTAL SITE PHOTOMETRIC PLAN
DPE3	CUT SHEETS

**Meridian Ranch Fieldhouse**

Tax Parcel Schedule Number(s)- 4220303009 & 4220303093  
 Phase 1 - Fieldhouse, 10559 Rainbow Bridge Dr  
 Phase 2 - Office Building, 10575 Rainbow Bridge Dr  
 Peyton, CO 80831  
 Meridian Service Metro District  
 11866 Stapleton Drive  
 Falcon, CO 80831

**LKA PARTNERS**  
 INCORPORATED

A Professional Corporation for Architecture and Planning  
**PLANT**  
 ENGINEERING CONSULTANTS  
 300 WEST FALCON BLVD SUITE 1000  
 COLORADO SPRINGS, CO 80903  
 719.473.8448  
 www.lkapartners.com

**El Paso County**  
 Major Commercial Site  
 Development Plan

Drawn: CAO/JDH  
 Checked: MPP  
 Issued: 05/10/2024  
 Revised: DELTA 1 COMMENTS 06/18/2024

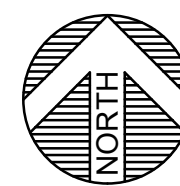
**ELECTRICAL SITE DEVELOPMENT PLAN**

**DPE1**

Project No. 23085  
 The LKA Partners Incorporated

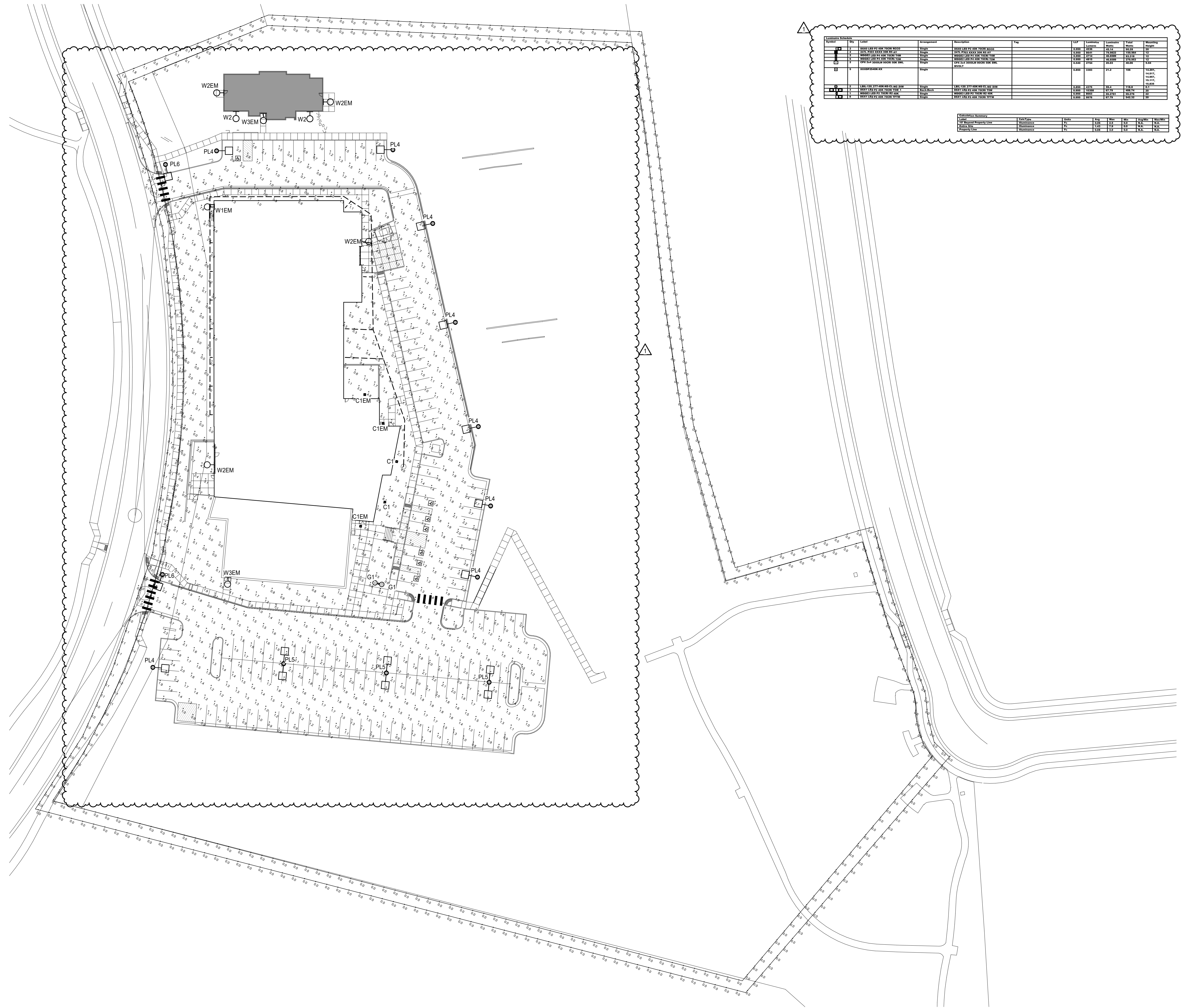
© Copyright 2024 The LKA Partners, Inc. This document and the information contained herein may not be reproduced or excerpted from without the express written permission of The LKA Partners, Inc. Unauthorized copying, disclosure or construction use are prohibited by copyright law.

6/18/2024 5:22:25 PM



# DEVELOPMENTAL SITE PHOTOMETRIC PLAN

SCALE: 1" = 40'-0"



Item	Code	Description	Quantity	Unit	Value	Material
1	1	100' x 100' ASPHALT DRIVE	1	SQ. FT.	10000	ASPH.
2	2	100' x 100' ASPHALT DRIVE	1	SQ. FT.	10000	ASPH.
3	3	100' x 100' ASPHALT DRIVE	1	SQ. FT.	10000	ASPH.
4	4	100' x 100' ASPHALT DRIVE	1	SQ. FT.	10000	ASPH.
5	5	100' x 100' ASPHALT DRIVE	1	SQ. FT.	10000	ASPH.
6	6	100' x 100' ASPHALT DRIVE	1	SQ. FT.	10000	ASPH.
7	7	100' x 100' ASPHALT DRIVE	1	SQ. FT.	10000	ASPH.
8	8	100' x 100' ASPHALT DRIVE	1	SQ. FT.	10000	ASPH.
9	9	100' x 100' ASPHALT DRIVE	1	SQ. FT.	10000	ASPH.
10	10	100' x 100' ASPHALT DRIVE	1	SQ. FT.	10000	ASPH.
11	11	100' x 100' ASPHALT DRIVE	1	SQ. FT.	10000	ASPH.
12	12	100' x 100' ASPHALT DRIVE	1	SQ. FT.	10000	ASPH.

## Meridian Ranch Fieldhouse

Tax Parcel Schedule Number(s)- 4220303009 & 4220303093  
 Phase 1 - Fieldhouse, 10559 Rainbow Bridge Dr  
 Phase 2 - Office Building, 10575 Rainbow Bridge Dr  
 Peyton, CO 80831  
 Meridian Service Metro District  
 11886 Stapleton Drive  
 Falcon, CO 80831

### El Paso County Major Commercial Site Development Plan

Drawn: CAO/JDH  
 Checked: MPP  
 Issued: 05/10/2024  
 Revised: DELTA 1 COMMENTS 06/18/2024

### DEVELOPMENTAL SITE PHOTOMETRIC PLAN

# DPE2

Project No. 23085  
The LKA Partners Incorporated

**LKA PARTNERS**  
 INCORPORATED  
 A Professional Corporation for Architecture and Planning  
**PLANT**  
 ENGINEERING CONSULTANTS  
 300 WEST FALCON BLVD. SUITE 1000  
 FALCON, CO 80831  
 430 North Tejon Street, Suite 208  
 Colorado Springs, Colorado 80903  
 tele: 719.473.8446 fax: 719.473.8448  
 web: www.lkpartners.com

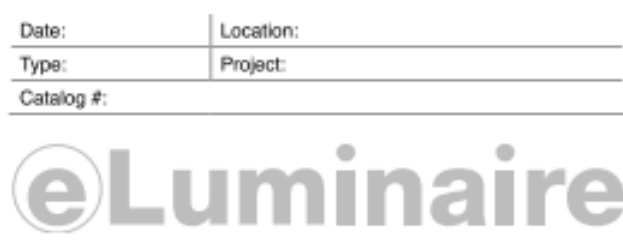
© Copyright 2024 The LKA Partners, Inc. This document and the information contained herein may not be reproduced or excerpted from without the express written permission of The LKA Partners, Inc. Unauthorized copying, disclosure or construction use are prohibited by copyright law.

Technical Specifications

CENTURY DP Series Low Glare Recessed Canopy

Product Description The CENTURY DP Series LED Luminaire has a form factor designed to exceed standards for all recessed canopy and soffit applications.

- Product Performance
• Wattage Range: 21W-53W
• Input Voltage: 120-277V or 277-480V
• CCT: 3000K, 4000K or 5000K (Amber and custom CCT available)



Key Data table with columns for Lumens Range, Wattage Range, Efficacy Range, Feature Life, Dimensions, Weight.

Ordering Guide

Ordering Guide table with columns for Series, Distribution, Output Type, CCT Code, Voltage, Fixture color, Options, Custom Size.

TYPES C1,C1EM

Technical Specifications

CENTURY DP Series

Product Specifications

- Construction & Materials
• Aluminum housing with multi stage pre-treatment and high-durability TGIC powder coat finish
• UV Stabilized single PMMA Lens - Temper resistant
• Robust low profile design
• Recessed mount covered canopy only

Photometry

All published photometric testing data is performed to IESNA LM79-08 standards by a NVLAP accredited laboratory.

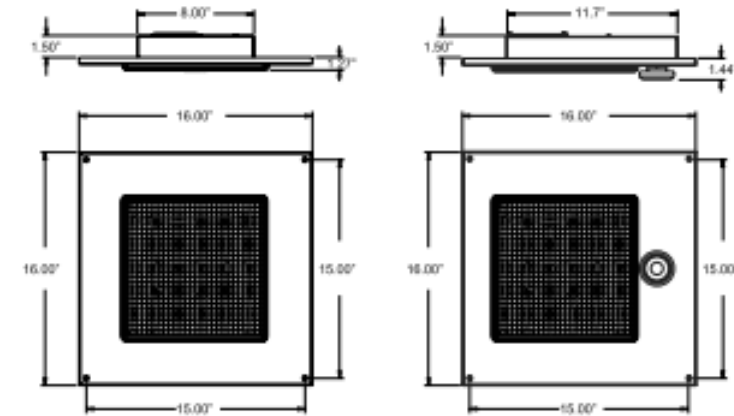
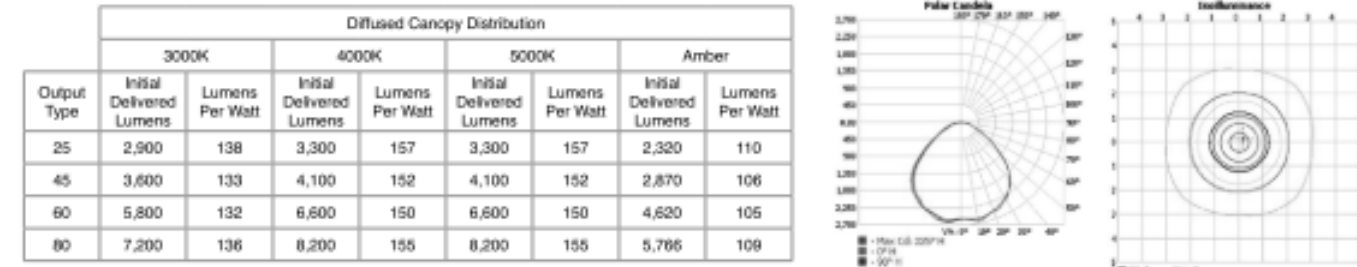


Figure Weight: 8.0 to 9.75 lbs

eLuminaire



- Specifications
EPA: 0.02 ft (6.1mm)
Length: 32.71" (831mm)
Width: 14.26" (362mm)
Height H1: 7.88" (200mm)
Height H2: 2.73" (69mm)
Weight: 34 lbs (15 kg)

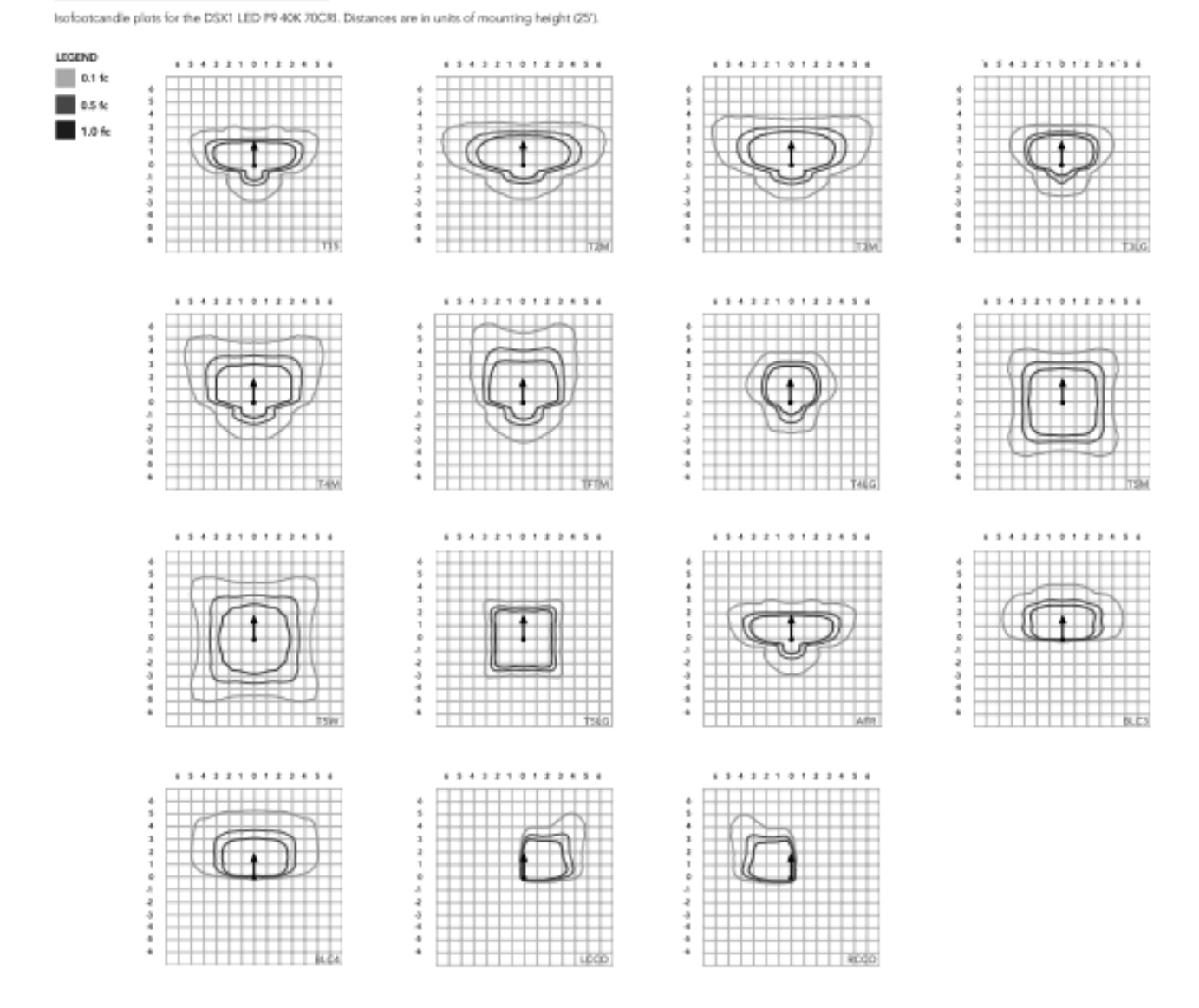
Ordering Information

Ordering Information table with columns for Series, LED, Color Temperature, Color Rendering Index, Distribution, Voltage, Mounting.

Control options and Shipped installed table with columns for Control options, Shipped installed, Shipped separately.

TYPES PL4, PL5

Photometric Diagrams



Ordering Information table for PL4 and PL5 types with columns for Series, LED, Color Temperature, Color Rendering Index, Distribution, Voltage, Mounting.

L K A PARTNERS INCORPORATED A Professional Corporation for Architecture and Planning

PLANT ENGINEERING CONSULTANTS 300 WEST FALCON BLVD. SUITE 1000 FALCON, CO 80831

© Copyright 2024 The LKA Partners, Inc. This document and the information contained herein may not be reproduced or exceeded from without the express written permission of The LKA Partners, Inc.

Meridian Ranch Fieldhouse Tax Parcel Schedule Number(s)- 4220303009 & 4220303093 Phase 1 - Fieldhouse, 10559 Rainbow Bridge Dr Phase 2 - Office Building, 10575 Rainbow Bridge Dr Peyton, CO 80831 Meridian Service Metro District 11886 Stapleton Drive Falcon, CO 80831

TYPE PL6



- Specifications
EPA: 0.44 ft (6.1mm)
Length: 26.18" (665mm)
Width: 14.06" (357mm)
Height H1: 2.26" (57mm)
Height H2: 7.46" (190mm)
Weight: 23 lbs (10 kg)

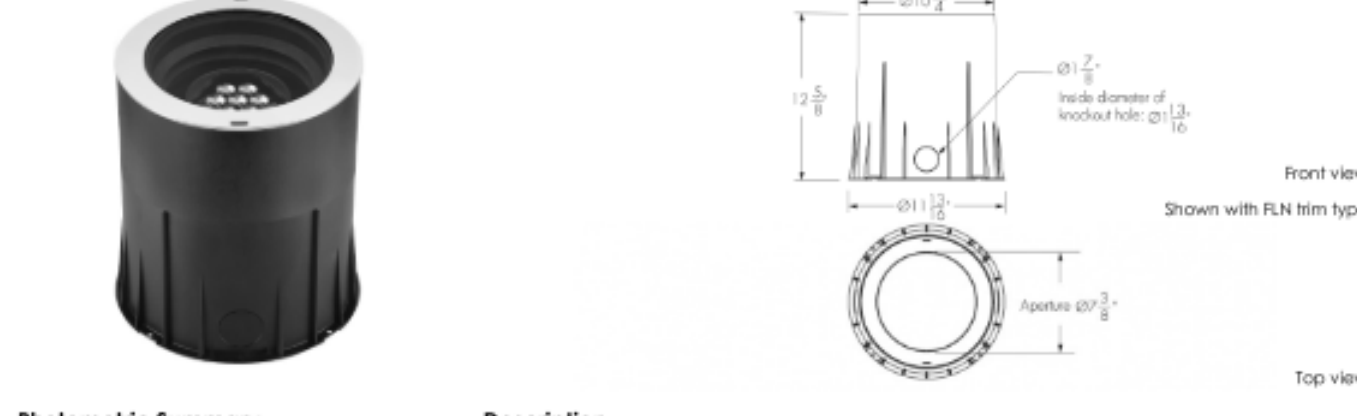
Introduction The modern styling of the D-Series features a highly refined aesthetic that blends seamlessly with its environment.

Ordering Information

Ordering Information table with columns for Series, LED, Color Temperature, Color Rendering Index, Distribution, Voltage, Mounting.

Control options and Shipped installed table with columns for Control options, Shipped installed, Shipped separately.

TYPE G1



Photometric Summary

Photometric Summary table with columns for Symmetric, Asymmetric, Delivered output (lm), Intensity (peak cd), Power (120V) [W].

Construction, Color and Color Temperature, Optics (nominal distribution), Lenses, Optical Option (factory installed), Beam Type, Mounting, Adjustment, Power Consumption, Warranty.

TYPE W1EM



- Specifications
Depth (D1): 8"
Depth (D2): 1.5"
Height: 9"
Width: 18"
Weight: 19.5 lbs

WDGE LED Family Overview

WDGE LED Family Overview table with columns for Luminaire, Standard EM, CCT, Sensor, P1, P2, P3, P4, P5, P6.

Ordering Information

Ordering Information table with columns for Series, Package, Color Temperature, CCT, Distribution, Voltage, Mounting.

Control options and Shipped installed table with columns for Control options, Shipped installed, Shipped separately.

TYPES W2/W2EM/W3EM



- Specifications
Depth (D1): 7"
Depth (D2): 1.5"
Height: 9"
Width: 11.5"
Weight: 13.5 lbs

WDGE LED Family Overview

WDGE LED Family Overview table with columns for Luminaire, Optics, Standard EM, CCT, Sensor, P1, P2, P3, P4, P5, P6.

Ordering Information

Ordering Information table with columns for Series, Package, Color Temperature, CCT, Distribution, Voltage, Mounting.

Control options and Shipped installed table with columns for Control options, Shipped installed, Shipped separately.

El Paso County Major Commercial Site Development Plan

Drawn: CAO/JDH Checked: MPP Issued: 05/10/2024 Revised: DELTA 1 COMMENTS 06/18/2024

CUT SHEETS

DPE3 The LKA Partners Incorporated 23085