

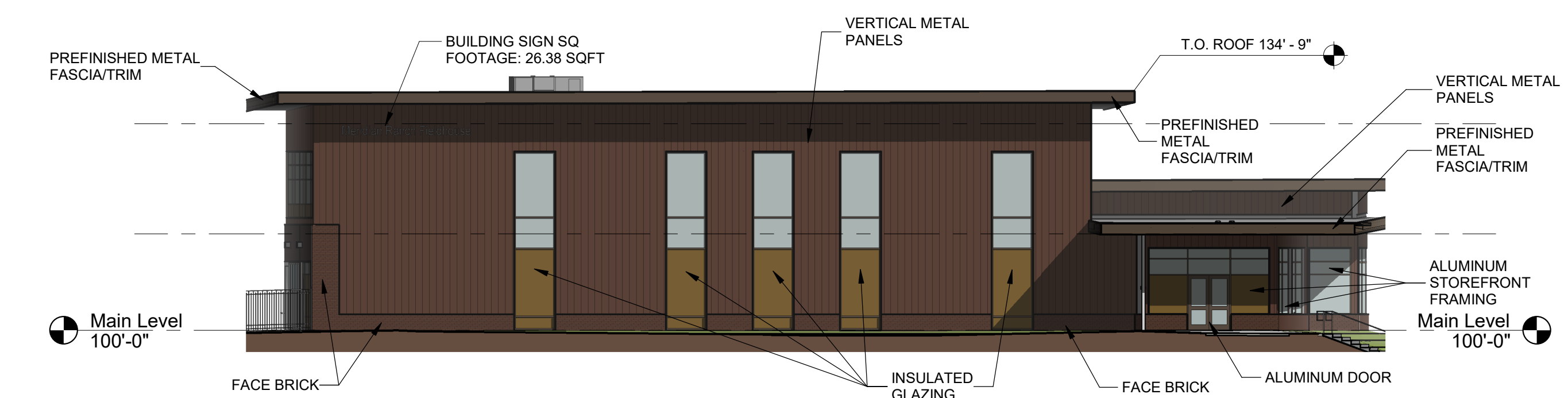
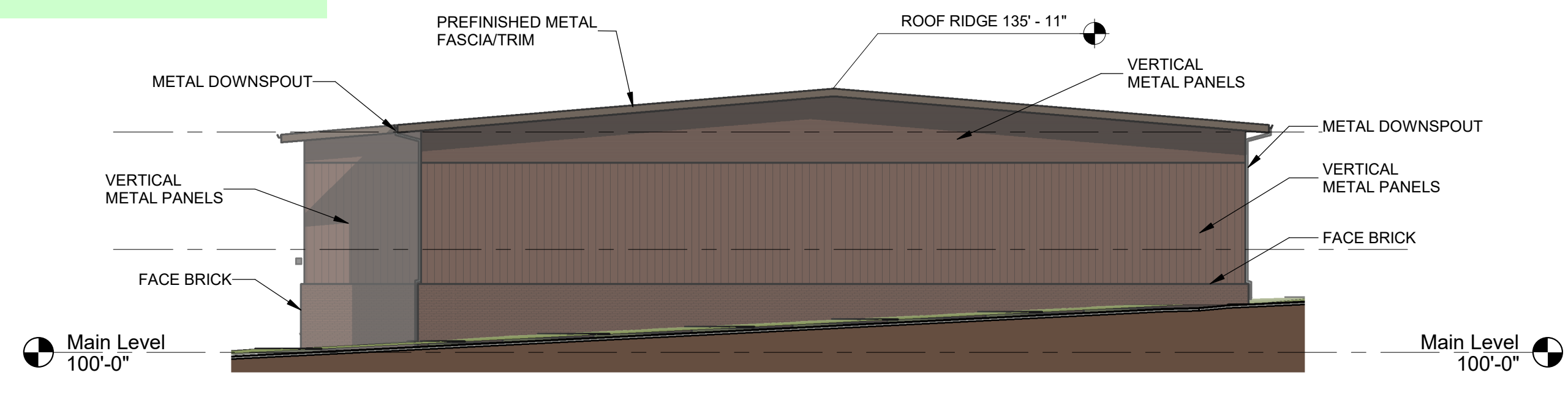
5 Monument Sign East Elevation
 Scale: 1/4" = 1'-0"

6 Monument Sign West Elevation
 Scale: 1/4" = 1'-0"

7 Monument Sign South Elevation
 Scale: 1/4" = 1'-0"

8 Monument Sign North Elevation
 Scale: 1/4" = 1'-0"

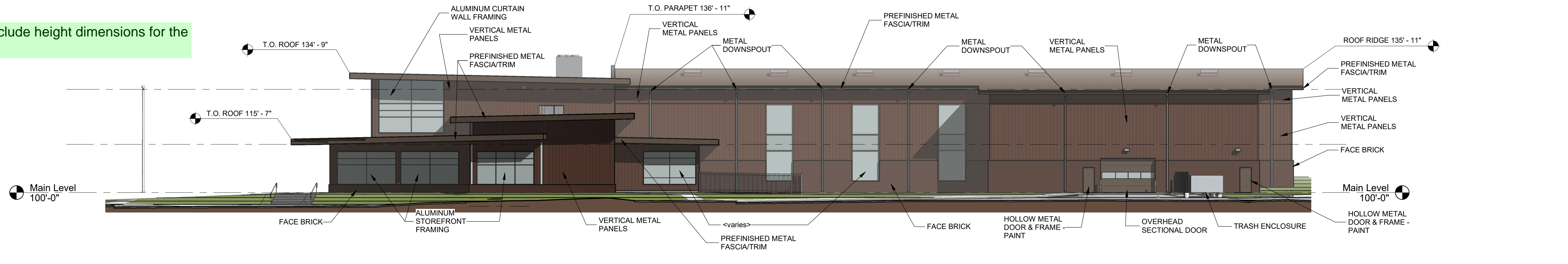
Please include height dimensions for the building



3 DP North Elevation
 Scale: 1/16" = 1'-0"

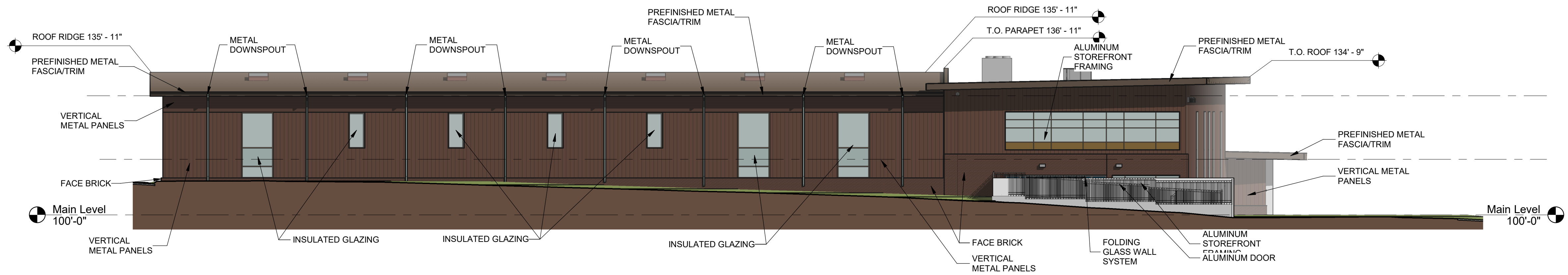
4 DP South Elevation
 Scale: 1/16" = 1'-0"

Please include height dimensions for the building



2 DP East Elevation
 Scale: 1/16" = 1'-0"

Please include height dimensions for the building



1 DP West Elevation
 Scale: 1/16" = 1'-0"

© Copyright 2024 The LKA Partners, Inc. This document and the information contained herein may not be reproduced or excerpted from without the express written permission of The LKA Partners, Inc. Unauthorized copying, disclosure or construction use are prohibited by copyright law.

Meridian Ranch Fieldhouse
 Meridian Service Metro District
 Rainbow Bridge Dr
 Peyton, CO 80831

El Paso County
 Major Commercial Site
 Development Plan

Drawn: TAH
 Checked: DKO
 Issued: 20 February 2024
 Revised:

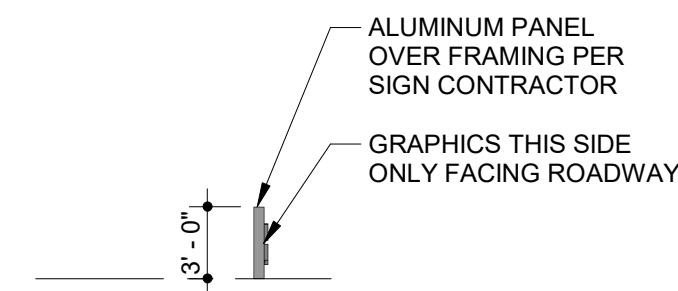
Exterior Elevations and
 Monument Sign
 Elevations

DP3.1
 Project No. 23-012
 The LKA Partners Incorporated

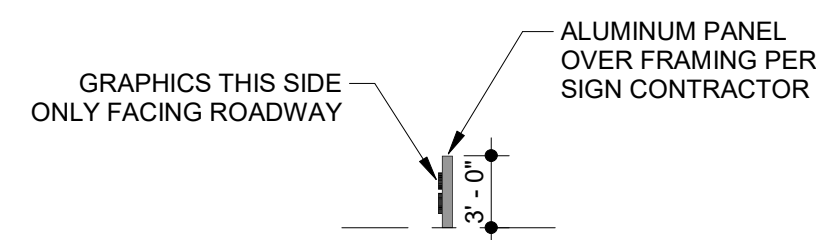
2/20/2024 5:22:04 PM

Meridian Service Metropolitan District Offices

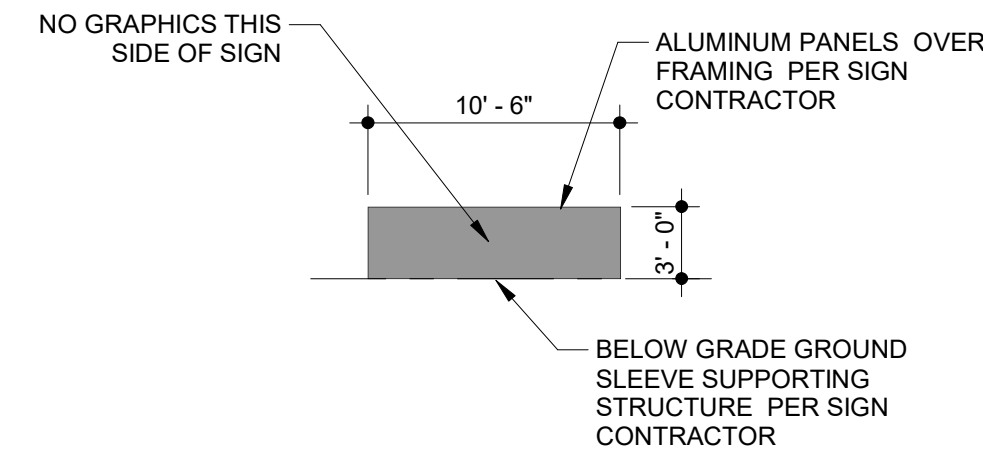
Meridian Service Metro District
 Rainbow Bridge Dr
 Peyton, CO 80831



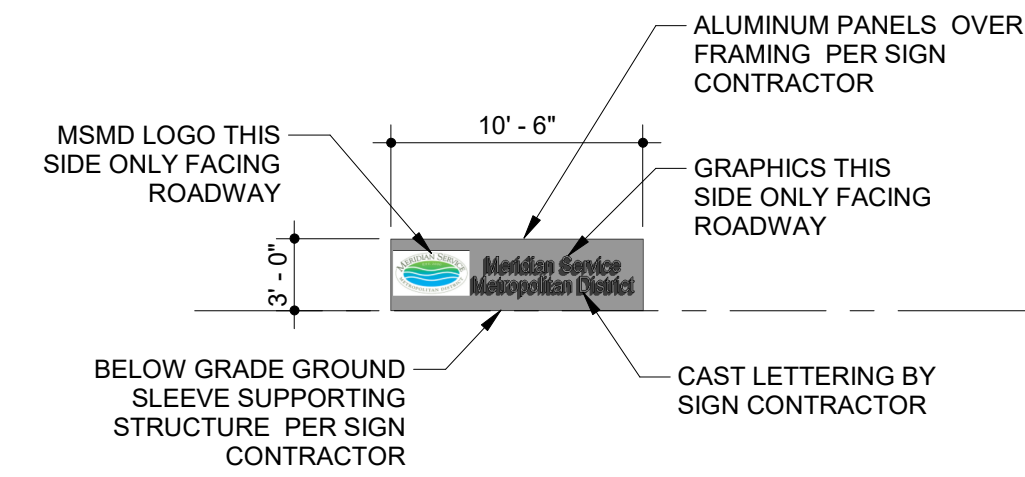
5 DP Sign West Elevation
 Scale: 1/8" = 1'-0"



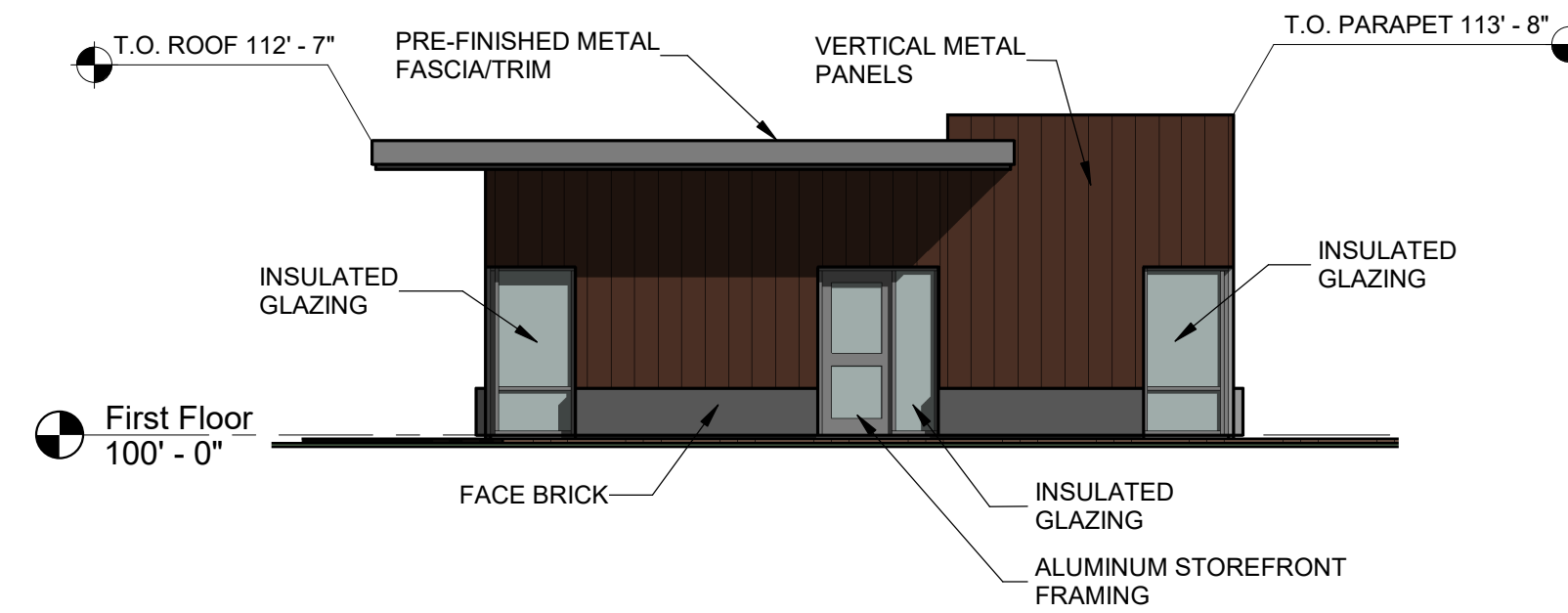
6 DP Sign East Elevation
 Scale: 1/8" = 1'-0"



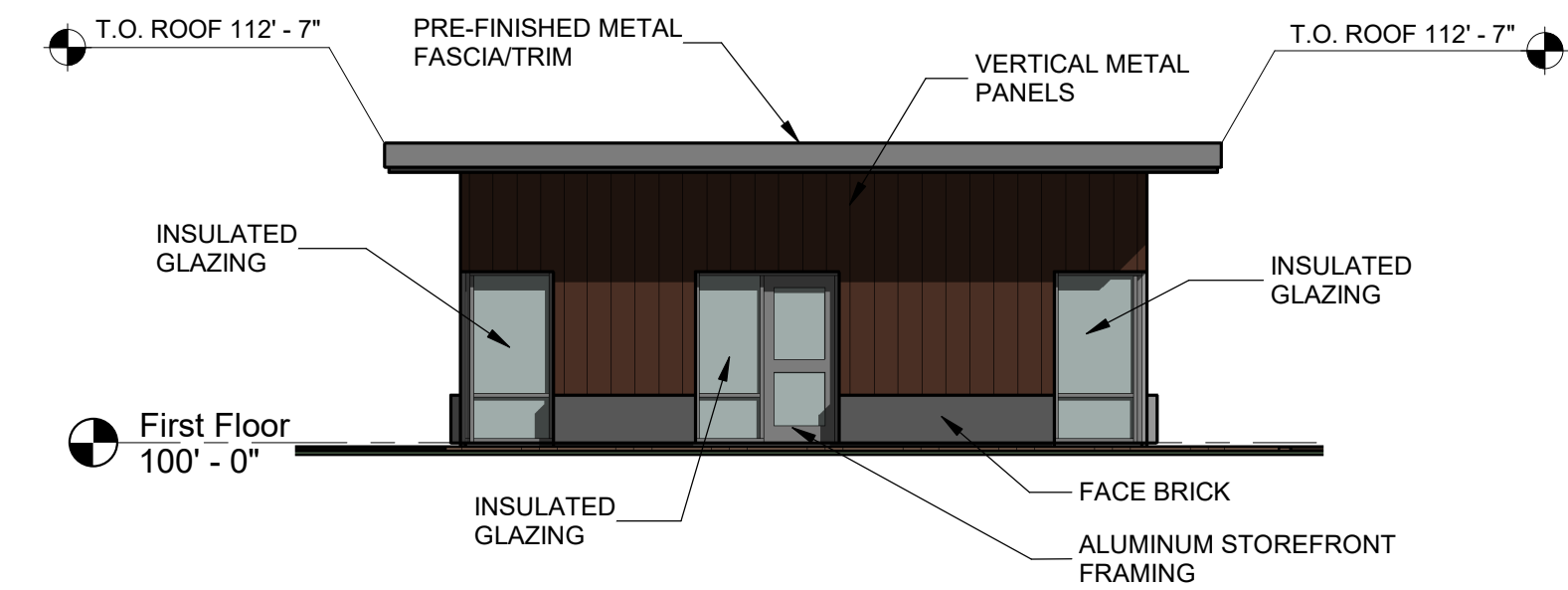
7 DP Sign North Elevation
 Scale: 1/8" = 1'-0"



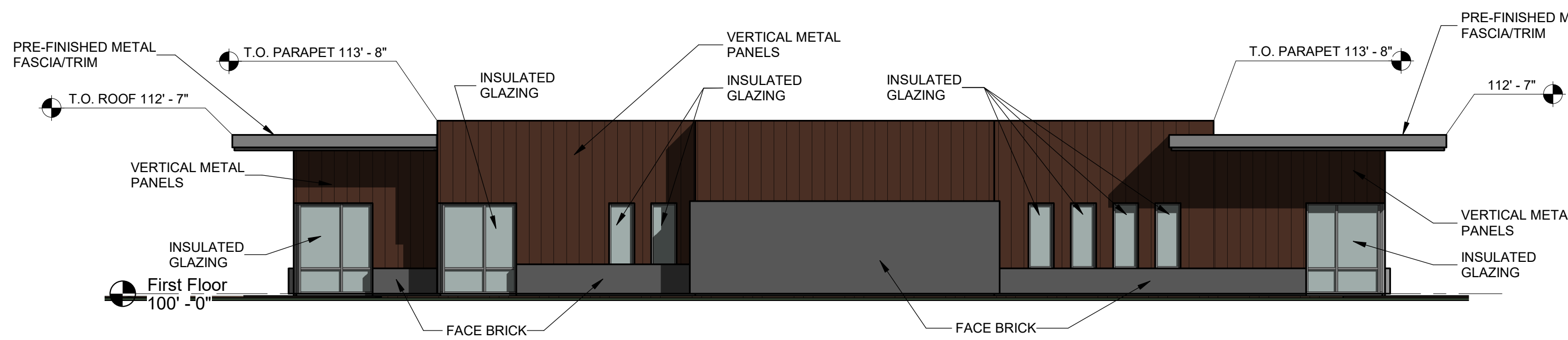
8 DP Sign South Elevation
 Scale: 1/8" = 1'-0"



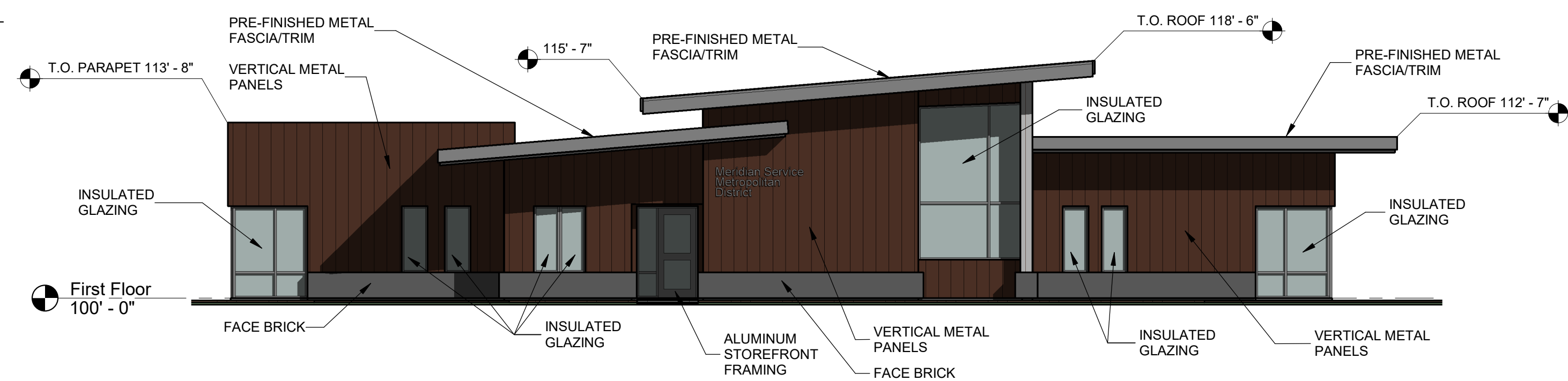
3 DP West Elevation
 Scale: 1/8" = 1'-0"



4 DP East Elevation
 Scale: 1/8" = 1'-0"



2 DP North Elevation
 Scale: 1/8" = 1'-0"



1 DP South Elevation
 Scale: 1/8" = 1'-0"

El Paso County Major Commercial Site Development Plan

Drawn: TAH
 Checked: DKO
 Issued: 20 February 2024
 Revised:

Exterior Elevations

DP3.2

Project No. 23-014
 The LKA Partners Incorporated