

UTILITY LINES ARE SHOWN ON THE GEC SHEETS

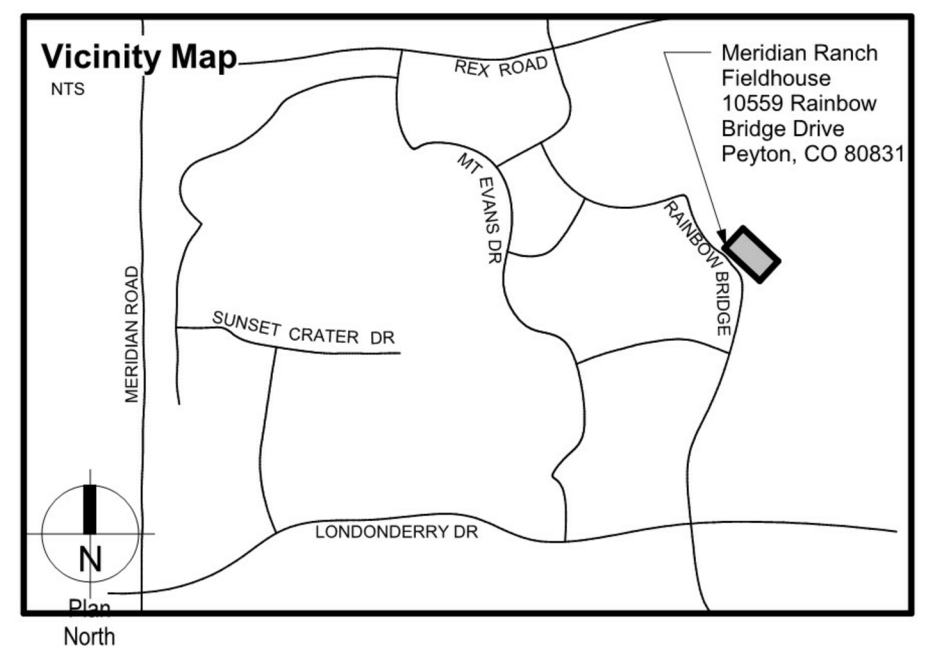
| AREA TABLE | | |
|---------------------|----------------|-------------|
| TYPE OF AREA | AREA (SQFT) | AREA (%) |
| BUILDING | 45,792 | 5% |
| OPEN SPACE | 641,612 | 77% |
| LANDSCAPING | 68,415 | 8% |
| IMPERMEABLE SURFACE | 81,456 | 10% |
| TOTAL | 837,274 | 100% |

The Owner agrees on behalf of him/herself and any developer or builder successors and assigns that the Subdivider and/or said successors and assigns shall be required to pay traffic impact fees in accordance with the El Paso County Road Impact Fee Program Resolution (Resolution No. 19-471), or any amendments thereto, at or prior to the time of building permit submittals. The fee obligation, if not paid at final plat recording, shall be documented on all sales documents and on plat notes to ensure that a title search would find the fee obligation before sale of the property.

SITE PLAN LEGEND

- PROPERTY BOUNDARY (REFER TO SURVEY)
- ⊕^{FH} FIRE HYDRANT
- S-1 TRAFFIC SIGN AND TYPE
- ⊕^{CO} LIGHT POLE CONCRETE BASE
- ♿ ACCESSIBLE PARKING SPACE SYMBOL PROVIDE "VAN" WHERE INDICATED
- ⊕^B FIXED STEEL PIPE BOLLARD
- X-X-X- CHAINLINK FENCE
- o-o-o- ORNAMENTAL FENCE
- ADA PATHWAY
- ▨ CONCRETE PEDESTRIAN WALKS W/ SCORE OR CONSTRUCTION JOINTS AS SHOWN.
- ▩ REINFORCED CONCRETE PAVING W/ SCORE OR CONSTRUCTION JOINTS AS SHOWN.
- 1 ASPHALT PAVING TYPE 1, AUTOMOBILE PARKING AND DRIVES.
- 2 ASPHALT PAVING TYPE 2, TRUCK ACCESS DRIVES.

SIGNS:
 S-1 STOP
 S-2 HC PARKING
 S-3 VAN



Approved
 By: *Justin Kilgore*
 Planning Manager
 Date: 08/13/2024
 El Paso County Planning & Community Development

L K A PARTNERS
 INCORPORATED
 A Professional Corporation for Architecture and Planning
 430 North Tejon Street Suite 208
 Colorado Springs Colorado 80903
 tele: 719.473.8446 fax: 719.473.8448
 web: www.lkapartners.com

Meridian Ranch Fieldhouse
 Tax Parcel Schedule Number(s)- 4220303009 & 4220303093
 Phase 1 - Fieldhouse, 10559 Rainbow Bridge Dr
 Phase 2 - Office Building, 10575 Rainbow Bridge Dr
 Peyton, CO 80831
 Meridian Service Metro District
 11886 Stapleton Drive
 Falcon, CO 80831

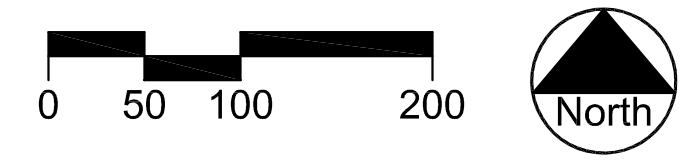
El Paso County
 Major Commercial Site
 Development Plan

Drawn: _____ TAH
 Checked: _____ DKO
 Issued: _____ 20 February 2024
 Revised: _____ 10 May 2024
 Revised: _____
 Final: _____

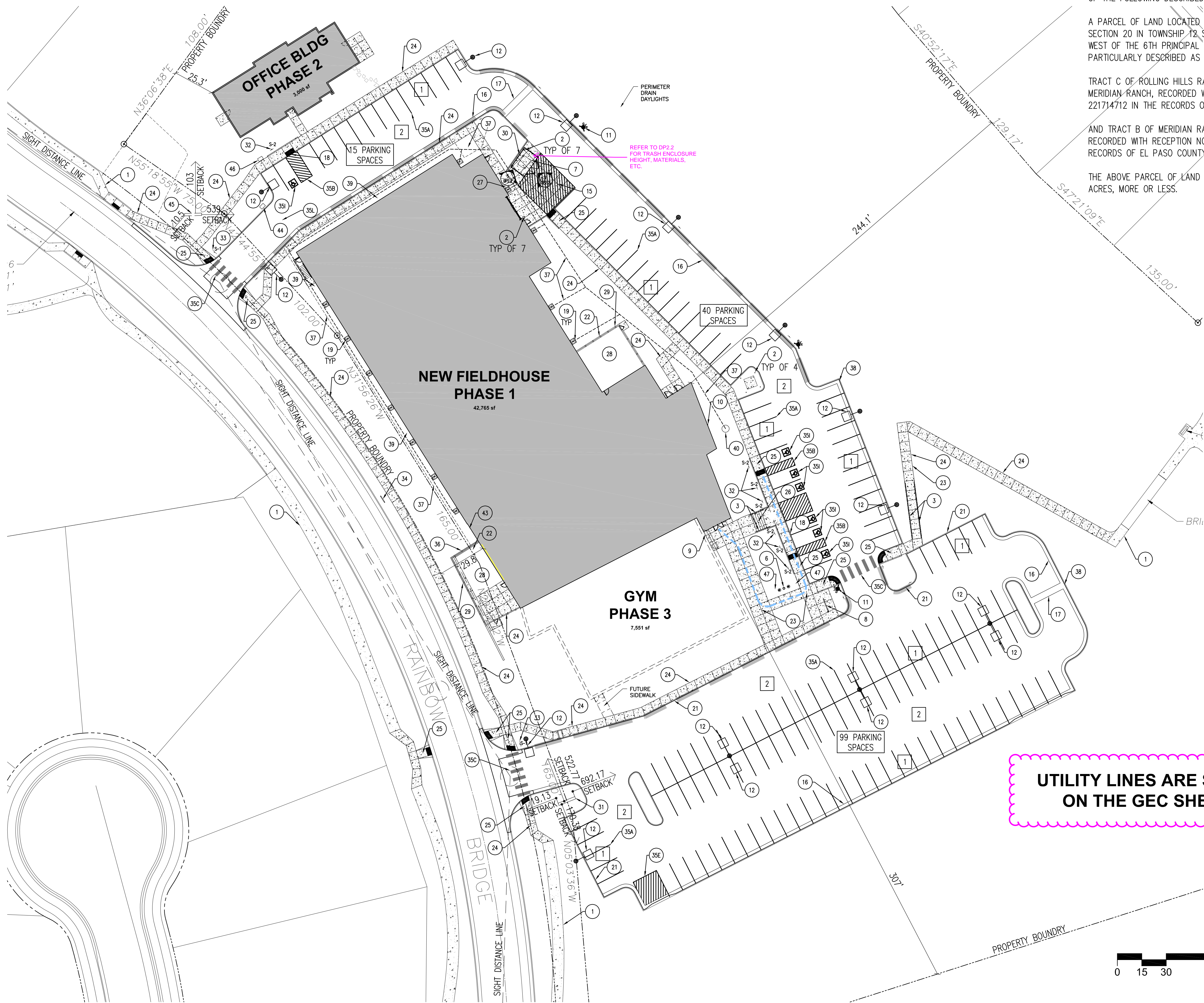
Overall Site Plan

DP1.1

Project No. _____ 23.012
 The LKA Partners Incorporated



Overall Site Plan
Scale: 1"=100'



LEGAL DESCRIPTION:
 KNOW ALL MEN BY THESE PRESENTS: THAT MERIDIAN SERVICE METROPOLITAN DISTRICT BEING THE OWNERS OF THE FOLLOWING DESCRIBED TRACTS OF LAND:

A PARCEL OF LAND LOCATED IN A PORTIONS OF SECTION 20 IN TOWNSHIP 12 SOUTH, RANGE 64 WEST OF THE 6TH PRINCIPAL MERIDIAN, MORE PARTICULARLY DESCRIBED AS FOLLOWS:

TRACT C OF ROLLING HILLS RANCH FILING 1 AT MERIDIAN RANCH, RECORDED WITH RECEPTION NO. 221714712 IN THE RECORDS OF EL PASO COUNTY.

AND TRACT B OF MERIDIAN RANCH FILING 8, RECORDED WITH RECEPTION NO. 215713635 IN THE RECORDS OF EL PASO COUNTY

THE ABOVE PARCEL OF LAND CONTAINS 19.226 ACRES, MORE OR LESS.

SITE PLAN SPECIFIC NOTES

1. EXISTING CONCRETE SIDEWALK
2. STEEL PIPE BOLLARD.
3. STEEL HAND RAILING.
4. NOT USED.
5. NOT USED.
6. 30' FLAGPOLE.
7. TRASH DUMPSTER BY OWNER.
8. BICYCLE RACK.
9. LITTER AND RECYCLING RECEPTACLE.
10. FIRE DEPARTMENT CONNECTION.
11. FIRE HYDRANT. SEE CIVIL.
12. ALUMINUM LIGHT POLE AND FIXTURE WITH CONCRETE BASE. SEE ELECTRICAL.
13. NOT USED.
14. NOT USED.
15. CONCRETE PAVING. SEE CIVIL.
16. CONCRETE CURB AND GUTTER. SEE CIVIL.
17. CONCRETE DRIVE CROSS PAN. SEE CIVIL.
18. CONCRETE FLUSH CURB. SEE CIVIL.
19. CONCRETE CATCH BASIN.
20. NOT USED.
21. CONCRETE CURB. SEE CIVIL.
22. CONCRETE CURB 6" WIDE 12" DEEP AT EDGE OF ARTIFICIAL TURF. SEE CIVIL.
23. CONCRETE WALK, SLOPE NOT TO EXCEED 1:12.
24. CONCRETE SIDEWALK WITH ISOLATION, EXPANSION AND CONTRACTION JOINTS AS SHOWN (1/4" PER FOOT MAXIMUM CROSS SLOPE. SEE CIVIL.
25. HANDICAPPED CURB RAMP. SEE CIVIL.
26. CONCRETE STAIR. SEE CIVIL.
27. SIDEWALK CATCH BASIN. SEE CIVIL.
28. ARTIFICIAL TURF.
29. ORNAMENTAL FENCE (6'-0" HIGH).
30. TRASH ENCLOSURE. CHAIN LINK WALLS AT SIDES WITH CHAIN LINK SWINGING GATES.
31. NEW MONUMENT SIGN. SEE SD3.2.
32. HANDICAP SIGN. SEE CIVIL.
33. TRAFFIC SIGN. SEE CIVIL.
34. TEMPORARY PROJECT SIGN.
35. TRAFFIC CONTROL AND PARKING STRIPING.
- A-AUTO PARKING STALL LINES: 4" WIDE, SOLID WHITE. TYP 9' WIDE x 18' LONG.
- B-HANDICAP / DISABLED PARKING STALL PARKING STRIPING AND LOADING AREA LINES: 4" WIDE, SOLID WHITE PERIMETER AND 24" APART AT CROSS HATCH.
- C-PEDESTRIAN CROSS WALK: 2' X 8' SOLID WHITE BARS, 3' APART.
- D-STOP BARS: 24" WIDE, 8' LONG.
- E-NEW PAVEMENT MARKING STRIPING: 4" WIDE, SOLID WHITE PERIMETER AND 24" APART AT CROSS HATCH.
- F-NOT USED.
- G-NOT USED.
- H-NOT USED.
- I-PAINTED HC PARKING STALL GRAPHIC.
- J-NOT USED.
- K-NOT USED.
- L-LANE LINES: 4" WIDE SOLID WHITE, 40' LONG.
- M-PAINTED TRAFFIC ARROW GRAPHICS.
36. NEW CAST IN PLACE CONCRETE RETAINING WALL SYSTEM.
37. STORM DRAIN.
38. CURB INLET. SEE CIVIL.
39. PERIMETER DRAINS.
40. MANHOLE. SEE CIVIL.
41. NOT USED.
42. NOT USED.
43. GAS METER. SEE MECHANICAL.
44. USPS MAILBOXES.
45. NEW OFFICE SIGN. SEE SD3.3.
46. PAYMENT DROP BOX.
47. SITE LIGHTING. SEE ELECTRICAL.

Refer to the Letter of Intent for proposed alternative parking space computation.

UTILITY LINES ARE SHOWN ON THE GEC SHEETS



Overall Site Plan

Scale: 1"=30'

SITE PLAN LEGEND

- PROPERTY BOUNDARY (REFER TO SURVEY)
- ⊕ FH FIRE HYDRANT
- S-1 TRAFFIC SIGN AND TYPE
- LP LIGHT POLE CONCRETE BASE
- ♿ ACCESSIBLE PARKING SPACE SYMBOL PROVIDE "VAN" WHERE INDICATED
- ⊕ FB FIXED STEEL PIPE BOLLARD
- x-x-x- CHAINLINK FENCE
- o-o-o- ORNAMENTAL FENCE
- ▬ ADA PATHWAY
- ▨ CONCRETE PEDESTRIAN WALKS W/ SCORE OR CONSTRUCTION JOINTS AS SHOWN.
- ▩ REINFORCED CONCRETE PAVING W/ SCORE OR CONSTRUCTION JOINTS AS SHOWN.
- 1 ASPHALT PAVING TYPE 1, AUTOMOBILE PARKING AND DRIVES.
- 2 ASPHALT PAVING TYPE 2, TRUCK ACCESS DRIVES.

- SIGNS:
 S-1 STOP
 S-2 HC PARKING
 S-3 VAN

LKA PARTNERS
 INCORPORATED
 A Professional Corporation for Architecture and Planning
 430 North Tejon Street Suite 208
 Colorado Springs Colorado 80903
 tele: 719.473.8446 fax: 719.473.8448
 web: www.lkpartners.com

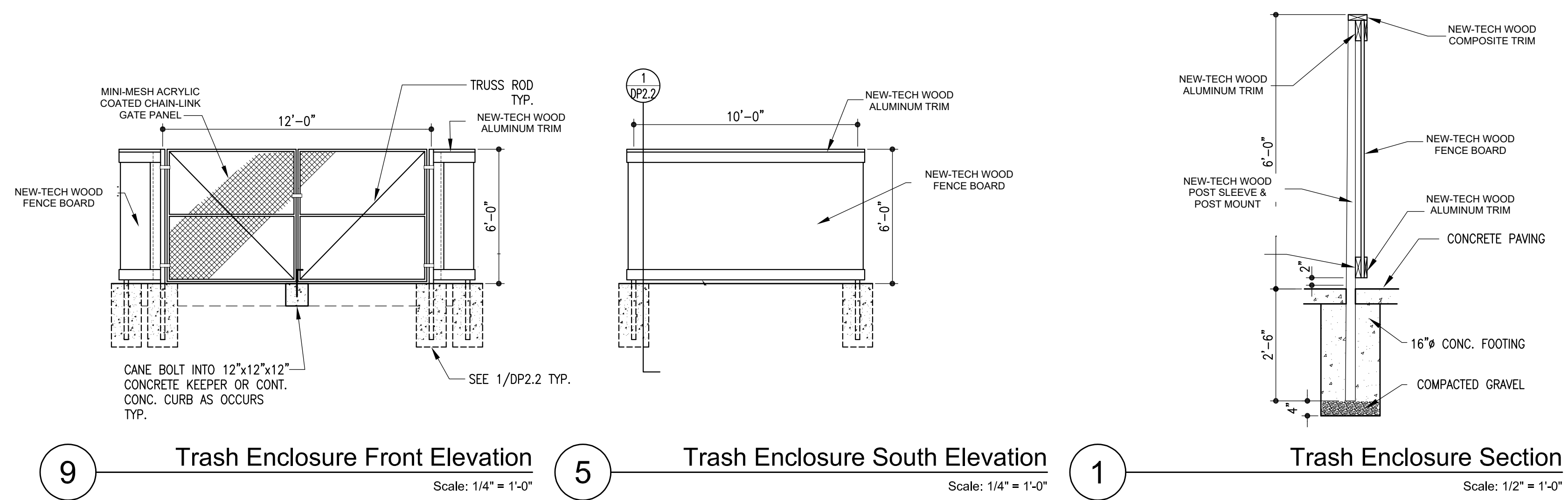
Meridian Ranch Fieldhouse
 Tax Parcel Schedule Number(s)- 4220303009 & 4220303093
 Phase 1 - Fieldhouse, 10559 Rainbow Bridge Dr
 Phase 2 - Office Building, 10575 Rainbow Bridge Dr
 Peyton, CO 80831
 Meridian Service Metro District
 11886 Stapleton Drive
 Falcon, CO 80831

El Paso County
 Major Commercial Site
 Development Plan

Drawn: _____ TAH
 Checked: _____ DKO
 Issued: _____ 20 February 2024
 Revised: _____ 10 May 2024
 Revised: _____
 Final: _____

Site Plan

DP2.1
 Project No. _____ 23.012
 The LKA Partners Incorporated



© Copyright 2024 The LKA Partners, Inc. This document and the information contained herein may not be reproduced or excerpted from without the express written permission of The LKA Partners, Inc. Unauthorized copying, disclosure or construction use are prohibited by copyright law.

Meridian Ranch Fieldhouse
 Tax Parcel Schedule Number(s)- 4220303009 & 4220303093
 Phase 1 - Fieldhouse, 10559 Rainbow Bridge Dr
 Phase 2 - Office Building, 10575 Rainbow Bridge Dr
 Peyton, CO 80831

Meridian Service Metro District
 11886 Stapleton Drive
 Falcon, CO 80831

El Paso County
Major Commercial Site
Development Plan

| | |
|----------|------------------|
| Drawn: | TAH |
| Checked: | DKO |
| Issued: | 20 February 2024 |
| Revised: | 10 May 2024 |
| Revised: | |
| Final: | |

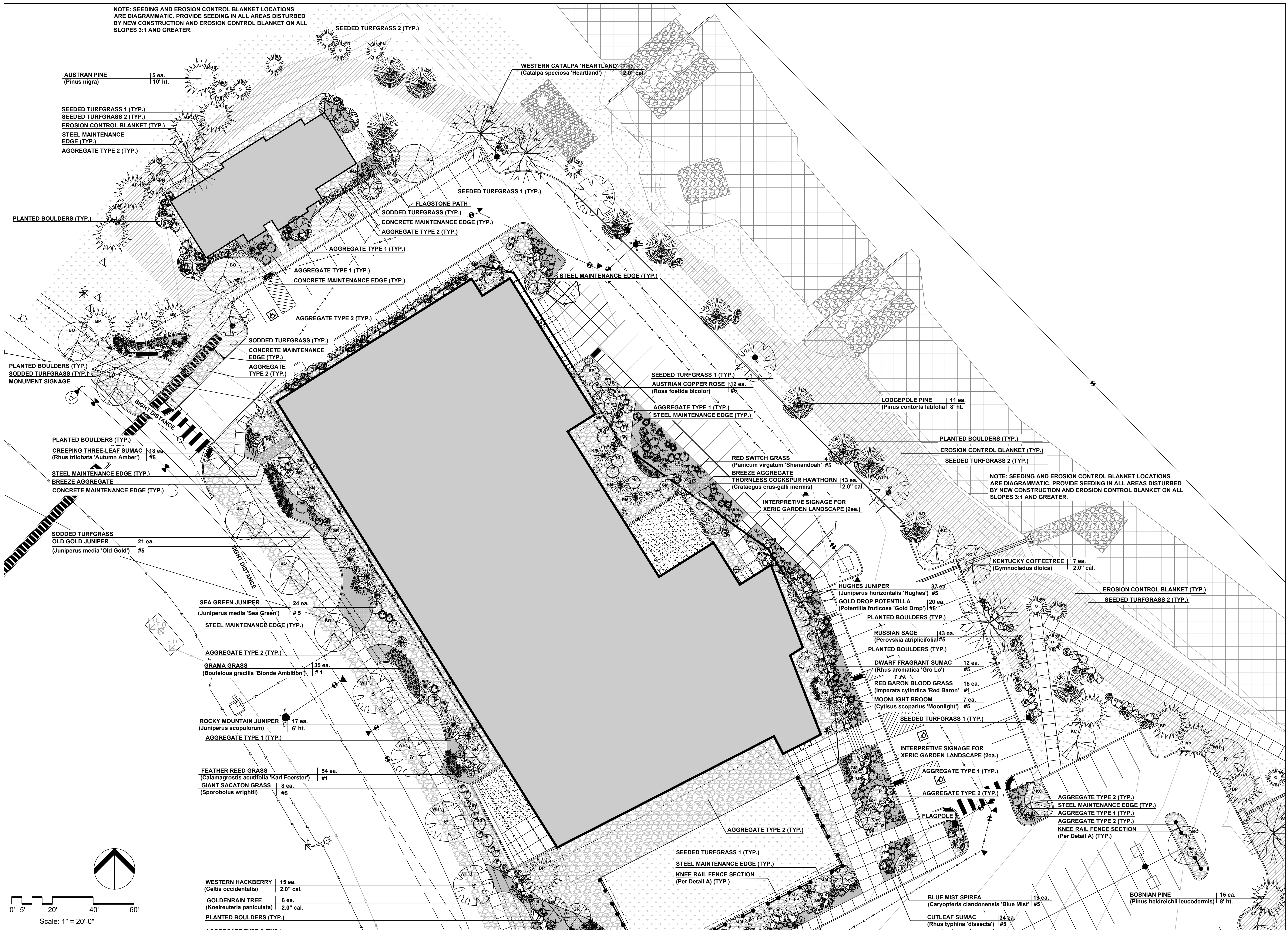
Site Details

DP2.2
 Project No. 23.012
 The LKA Partners Incorporated

L K A P A R T N E R S
 I N C O R P O R A T E D
 A Professional Corporation for Architecture and Planning

430 North Tejon Street Suite 208
 Colorado Springs Colorado 80903
 tele: 719.473.8446 fax: 719.473.8448
 web: www.lkpartners.com

NOTE: SEEDING AND EROSION CONTROL BLANKET LOCATIONS ARE DIAGRAMMATIC. PROVIDE SEEDING IN ALL AREAS DISTURBED BY NEW CONSTRUCTION AND EROSION CONTROL BLANKET ON ALL SLOPES 3:1 AND GREATER.



AUSTRAN PINE (Pinus nigra) 5 ea. 10' ht.

SEEDED TURFGRASS 1 (TYP.)
SEEDED TURFGRASS 2 (TYP.)
EROSION CONTROL BLANKET (TYP.)
STEEL MAINTENANCE EDGE (TYP.)
AGGREGATE TYPE 2 (TYP.)

PLANTED BOULDERS (TYP.)

PLANTED BOULDERS (TYP.)
SODDED TURFGRASS (TYP.)
MONUMENT SIGNAGE

PLANTED BOULDERS (TYP.)
CREEPING THREE-LEAF SUMAC (Rhus trilobata 'Autumn Amber') 18 ea. #5

STEEL MAINTENANCE EDGE (TYP.)
BREEZE AGGREGATE
CONCRETE MAINTENANCE EDGE (TYP.)

SODDED TURFGRASS
OLD GOLD JUNIPER (Juniperus media 'Old Gold') 21 ea. #5

SEA GREEN JUNIPER (Juniperus media 'Sea Green') 24 ea. #5
STEEL MAINTENANCE EDGE (TYP.)

AGGREGATE TYPE 2 (TYP.)
GRAMA GRASS (Bouteloua gracilis 'Blonde Ambition') 35 ea. #1

ROCKY MOUNTAIN JUNIPER (Juniperus scopulorum) 17 ea. 6' ht.
AGGREGATE TYPE 1 (TYP.)

FEATHER REED GRASS (Calamagrostis acutifolia 'Karl Foerster') 54 ea. #1
GIANT SACATON GRASS (Sporobolus wrightii) 8 ea. #5

WESTERN HACKBERRY (Celtis occidentalis) 15 ea. 2.0" cal.
GOLDENRAIN TREE (Koeleria paniculata) 6 ea. 2.0" cal.

PLANTED BOULDERS (TYP.)
AGGREGATE TYPE 2 (TYP.)

WESTERN CATALPA 'HEARTLAND' (Catalpa speciosa 'Heartland') 17 ea. 2.0" cal.

SEEDED TURFGRASS 1 (TYP.)
FLAGSTONE PATH
SODDED TURFGRASS (TYP.)
CONCRETE MAINTENANCE EDGE (TYP.)
AGGREGATE TYPE 2 (TYP.)

AGGREGATE TYPE 1 (TYP.)
AGGREGATE TYPE 1 (TYP.)
CONCRETE MAINTENANCE EDGE (TYP.)

SODDED TURFGRASS (TYP.)
CONCRETE MAINTENANCE EDGE (TYP.)
AGGREGATE TYPE 2 (TYP.)

SEEDED TURFGRASS 1 (TYP.)
AUSTRIAN COPPER ROSE (Rosa foetida bicolor) 12 ea. #5
AGGREGATE TYPE 1 (TYP.)
STEEL MAINTENANCE EDGE (TYP.)

LODGEPOLE PINE (Pinus contorta latifolia) 11 ea. 8' ht.

PLANTED BOULDERS (TYP.)
EROSION CONTROL BLANKET (TYP.)
SEEDED TURFGRASS 2 (TYP.)

RED SWITCH GRASS (Panicum virgatum 'Shenandoah') 4 ea. #5
BREEZE AGGREGATE
THORNLESS COCKSPUR HAWTHORN (Crataegus crus-galli inermis) 13 ea. 2.0" cal.

INTERPRETIVE SIGNAGE FOR XERIC GARDEN LANDSCAPE (2ea.)

NOTE: SEEDING AND EROSION CONTROL BLANKET LOCATIONS ARE DIAGRAMMATIC. PROVIDE SEEDING IN ALL AREAS DISTURBED BY NEW CONSTRUCTION AND EROSION CONTROL BLANKET ON ALL SLOPES 3:1 AND GREATER.

KENTUCKY COFFEETREE (Gymnocladus dioica) 7 ea. 2.0" cal.

EROSION CONTROL BLANKET (TYP.)
SEEDED TURFGRASS 2 (TYP.)

HUGHES JUNIPER (Juniperus horizontalis 'Hughes') 37 ea. #5
GOLD DROP POTENTILLA (Potentilla fruticosa 'Gold Drop') 20 ea. #5
PLANTED BOULDERS (TYP.)

RUSSIAN SAGE (Perovskia atriplicifolia) 43 ea. #5
PLANTED BOULDERS (TYP.)

DWARF FRAGRANT SUMAC (Rhus aromatica 'Gro Lo') 12 ea. #5
RED BARON BLOOD GRASS (Imperata cylindrica 'Red Baron') 15 ea. #1
MOONLIGHT BROOM (Cytisus scoparius 'Moonlight') 7 ea. #5

SEEDED TURFGRASS 1 (TYP.)
INTERPRETIVE SIGNAGE FOR XERIC GARDEN LANDSCAPE (2ea.)
AGGREGATE TYPE 1 (TYP.)

AGGREGATE TYPE 2 (TYP.)
AGGREGATE TYPE 2 (TYP.)

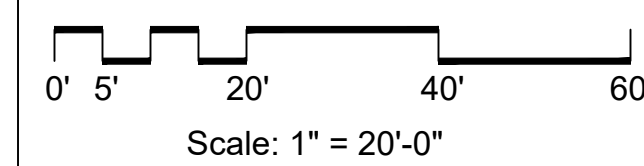
AGGREGATE TYPE 2 (TYP.)
STEEL MAINTENANCE EDGE (TYP.)
AGGREGATE TYPE 1 (TYP.)
AGGREGATE TYPE 2 (TYP.)
KNEE RAIL FENCE SECTION (Per Detail A) (TYP.)

AGGREGATE TYPE 2 (TYP.)
STEEL MAINTENANCE EDGE (TYP.)
AGGREGATE TYPE 1 (TYP.)
AGGREGATE TYPE 2 (TYP.)
KNEE RAIL FENCE SECTION (Per Detail A) (TYP.)

SEEDED TURFGRASS 1 (TYP.)
STEEL MAINTENANCE EDGE (TYP.)
KNEE RAIL FENCE SECTION (Per Detail A) (TYP.)

BLUE MIST SPIREA (Caryopteris clandonensis 'Blue Mist') 19 ea. #5
CUTLEAF SUMAC (Rhus typhina 'dissecta') 34 ea. #5

BOSNIAN PINE (Pinus heldreichii leucodermis) 15 ea. 8' ht.

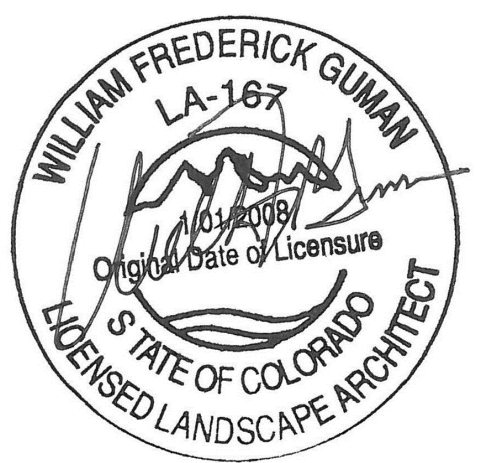


LKA PARTNERS
INCORPORATED
A Professional Corporation for Architecture and Planning
430 North Tejon Street Suite 208
Colorado Springs Colorado 80903
tel: 719.473.8446 fax: 719.473.8448
web: www.lkpartners.com



© Copyright 2024 The LKA Partners, Inc. This document and the information contained herein may not be reproduced or excerpted from without the express written permission of The LKA Partners, Inc. Unauthorized copying, disclosure or construction use are prohibited by copyright law.

Meridian Ranch Fieldhouse
Tax Parcel Schedule Number(s)- 4220303009 & 4220303093
Phase 1 -Fieldhouse, 10559 Rainbow Bridge Dr
Phase 2 - Office Building, 10575 Rainbow Bridge Dr
Peyton, CO 80831
Meridian Service Metro District
11886 Stapleton Drive
Falcon, CO 80831



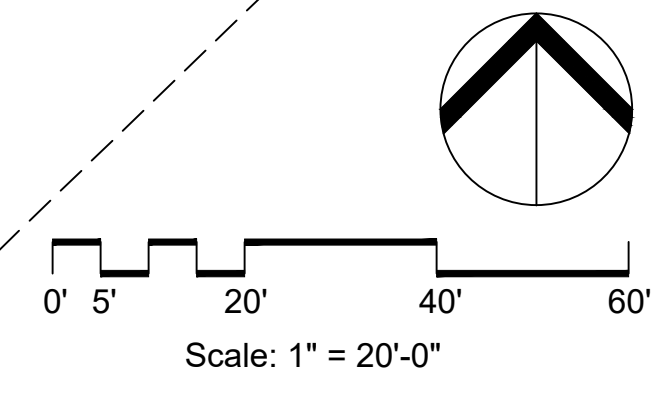
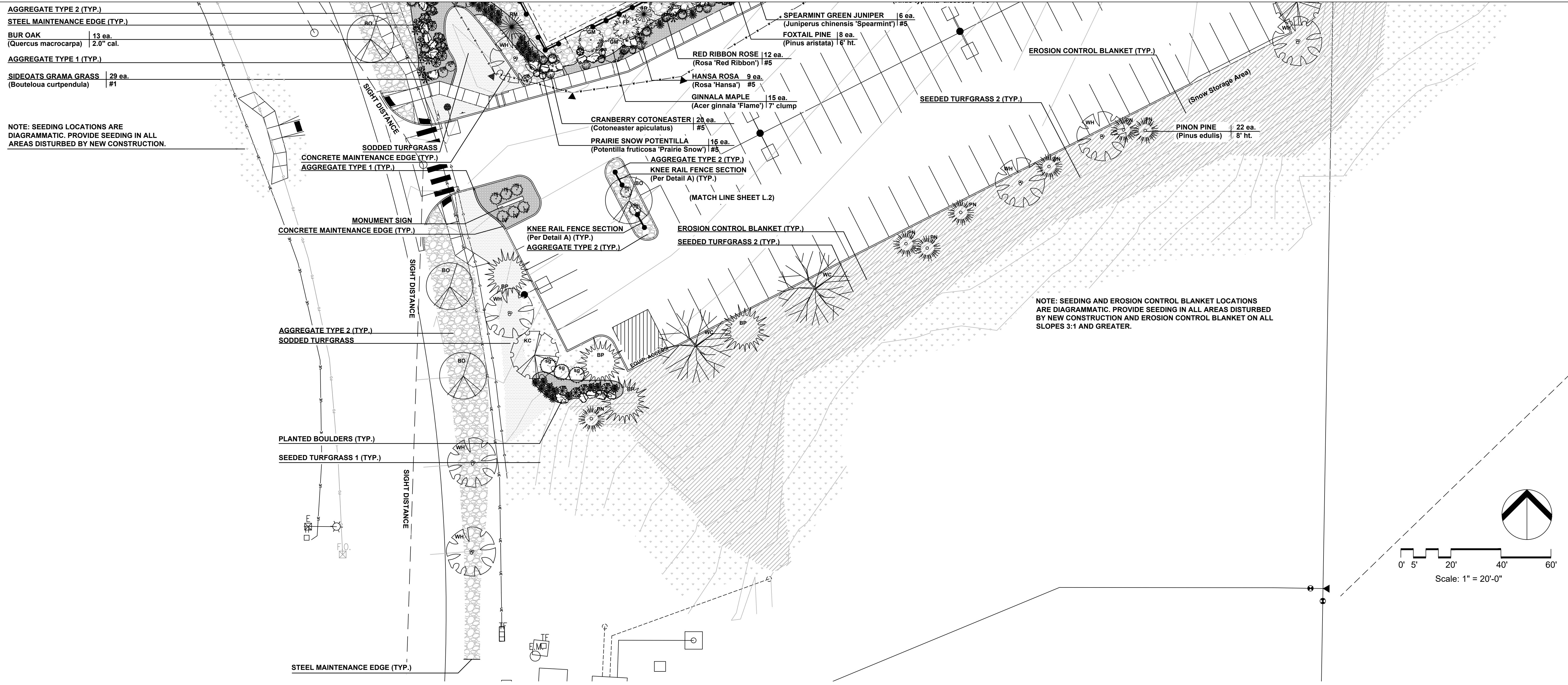
El Paso County
Major Commercial Site
Development Plan

Drawn: WFG, GEM
Checked: GEM
Issued: 20 February 2024
Revised: 28 March 2024
Revised:
Final:

Landscape Plan

LS-1

Project No. 23.012
The LKA Partners Incorporated

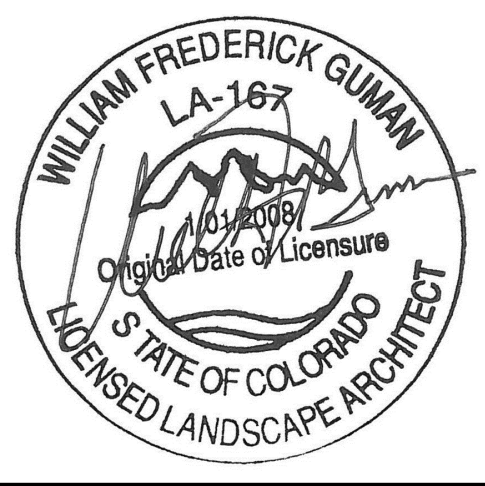


LKA PARTNERS
 INCORPORATED
 A Professional Corporation for Architecture and Planning
 430 North Tejon Street Suite 208
 Colorado Springs Colorado 80903
 tele: 719.473.8446 fax: 719.473.8448
 web: www.lkpartners.com



© Copyright 2024 The LKA Partners, Inc. This document and the information contained herein may not be reproduced or excerpted from without the express written permission of The LKA Partners, Inc. Unauthorized copying, disclosure or construction use are prohibited by copyright law.

Meridian Ranch Fieldhouse
 Tax Parcel Schedule Number(s)- 4220303009 & 4220303093
 Phase 1 -Fieldhouse, 10559 Rainbow Bridge Dr
 Phase 2 - Office Building, 10575 Rainbow Bridge Dr
 Peyton, CO 80831
 Meridian Service Metro District
 11886 Stapleton Drive
 Falcon, CO 80831

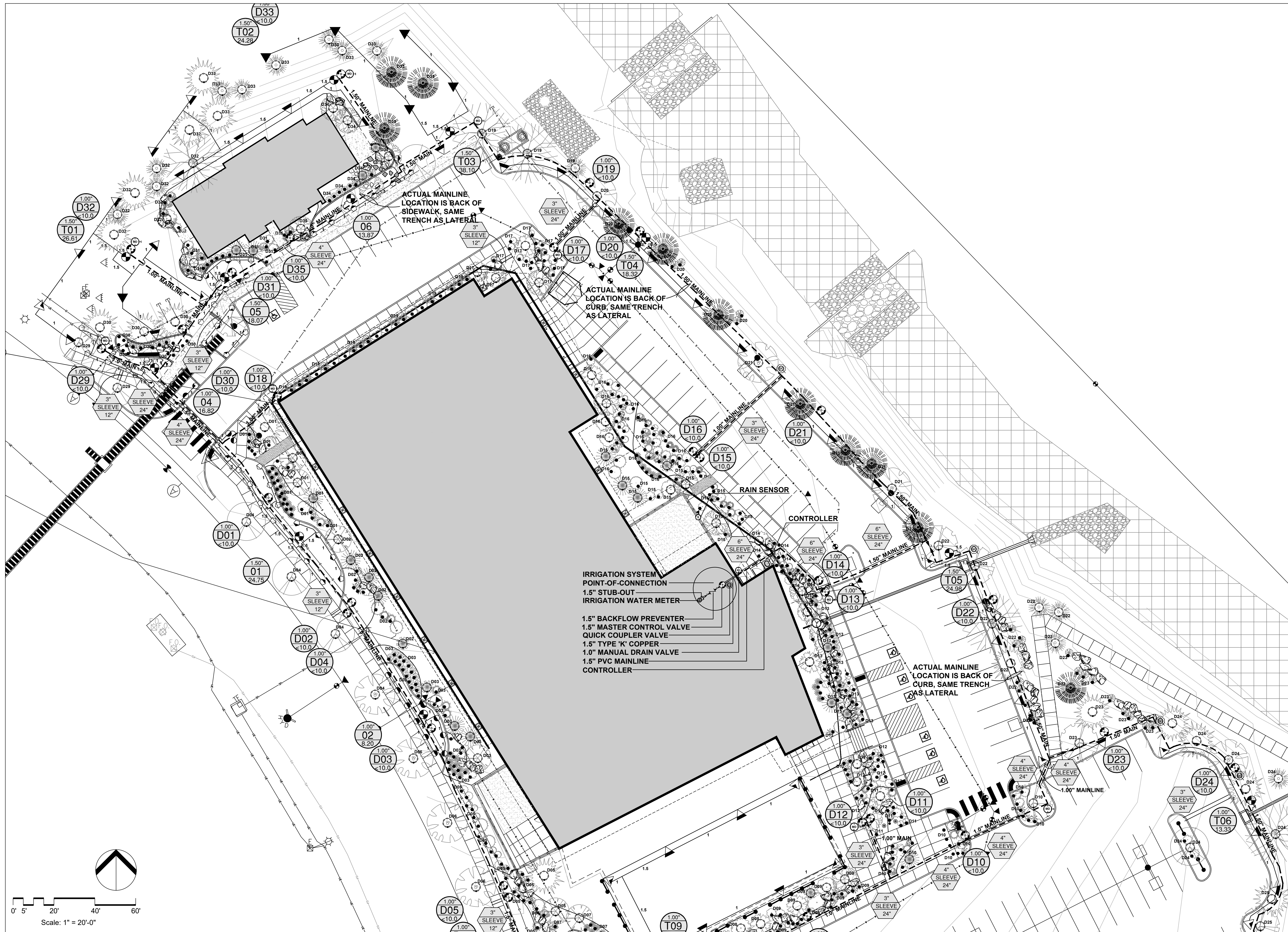


El Paso County
 Major Commercial Site
 Development Plan

| | |
|----------|------------------|
| Drawn: | WFG GEM |
| Checked: | GEM |
| Issued: | 20 February 2024 |
| Revised: | 28 March 2024 |
| Final: | |

Landscape Plan

LS-2



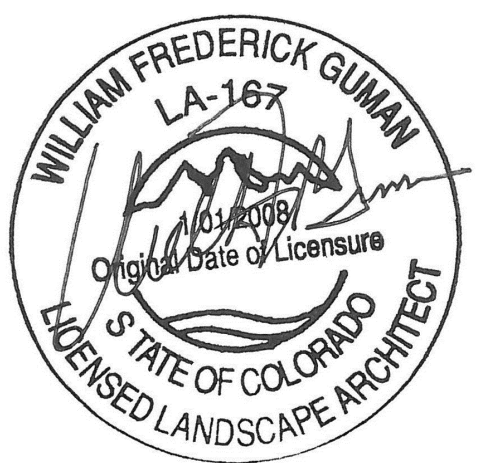
Scale: 1" = 20'-0"

LKA PARTNERS
 INCORPORATED
 A Professional Corporation for Architecture and Planning
 430 North Tejon Street Suite 208
 Colorado Springs Colorado 80903
 tele: 719.473.8446 fax: 719.473.8448
 web: www.lkpartners.com



© Copyright 2024 The LKA Partners, Inc. This document and the information contained herein may not be reproduced or excerpted from without the express written permission of The LKA Partners, Inc. Unauthorized copying, disclosure or construction use are prohibited by copyright law.

Meridian Ranch Fieldhouse
 Tax Parcel Schedule Number(s)- 4220303009 & 4220303093
 Phase 1 -Fieldhouse, 10559 Rainbow Bridge Dr
 Phase 2 - Office Building, 10575 Rainbow Bridge Dr
 Peyton, CO 80831
 Meridian Service Metro District
 11886 Stapleton Drive
 Falcon, CO 80831



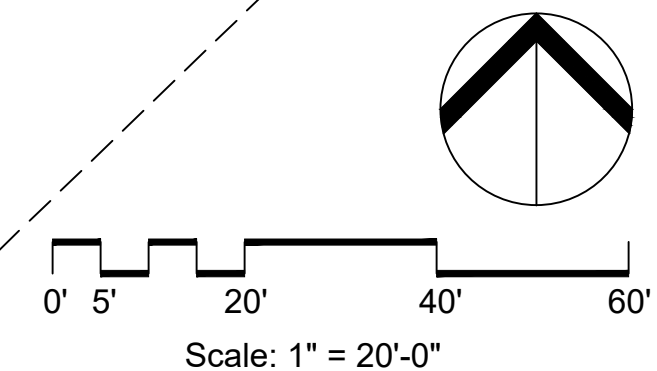
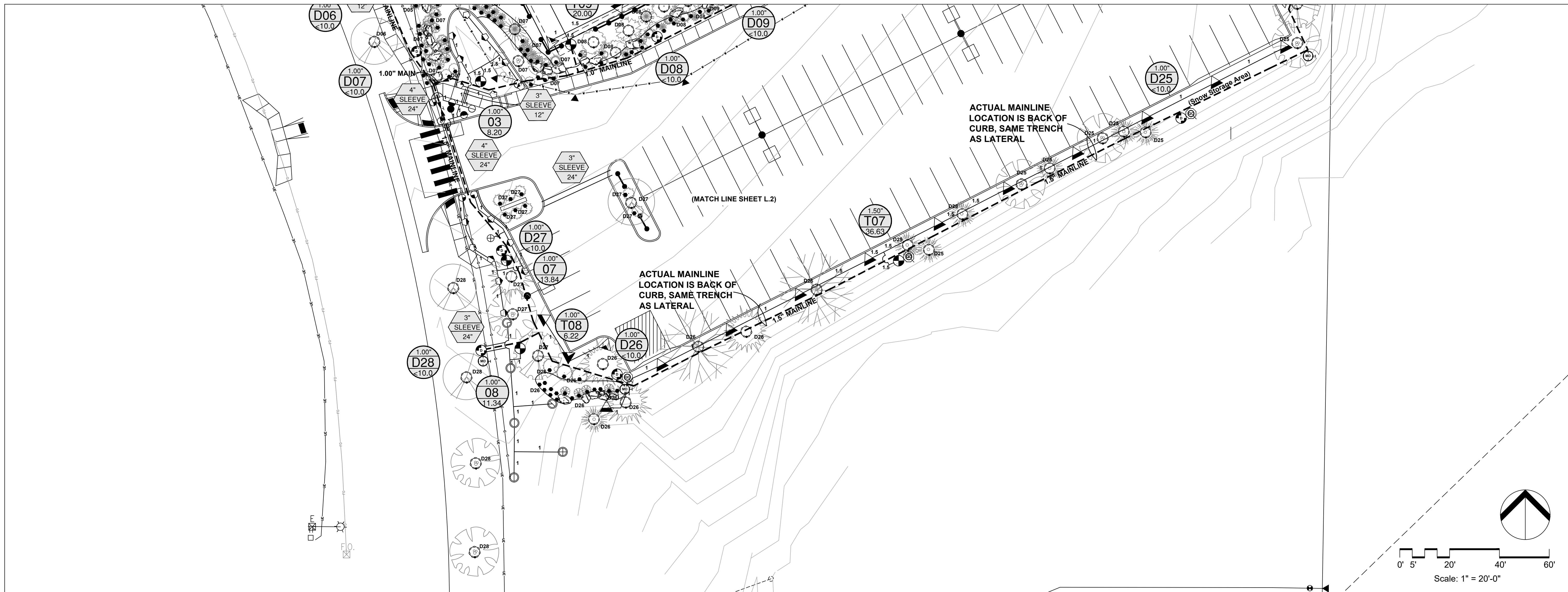
El Paso County
 Major Commercial Site
 Development Plan

Drawn: WFG GEM
 Checked: GEM
 Issued: 20 February 2024
 Revised: 28 March 2024
 Revised:
 Final:

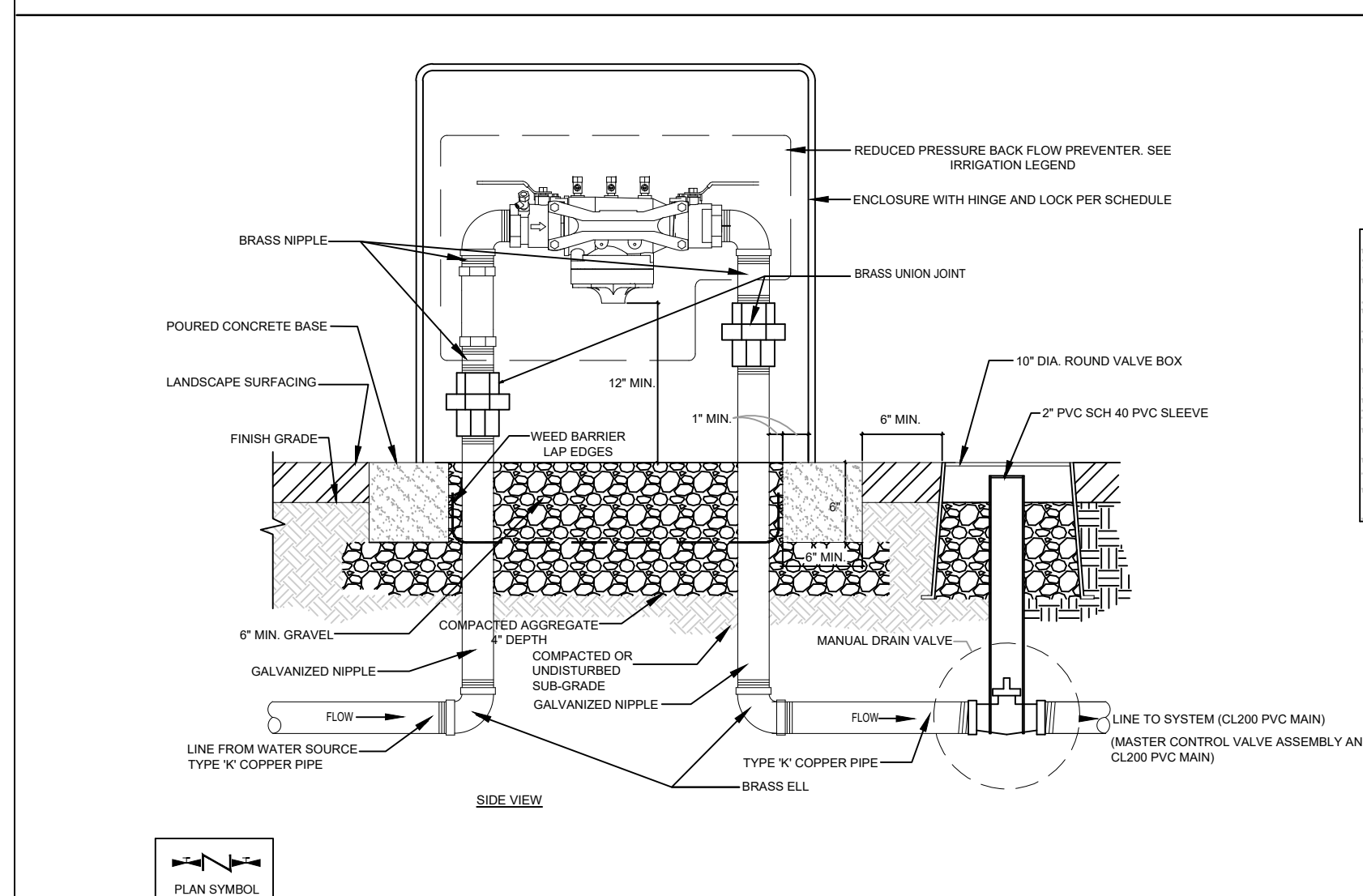
Irrigation Plan

LS-3

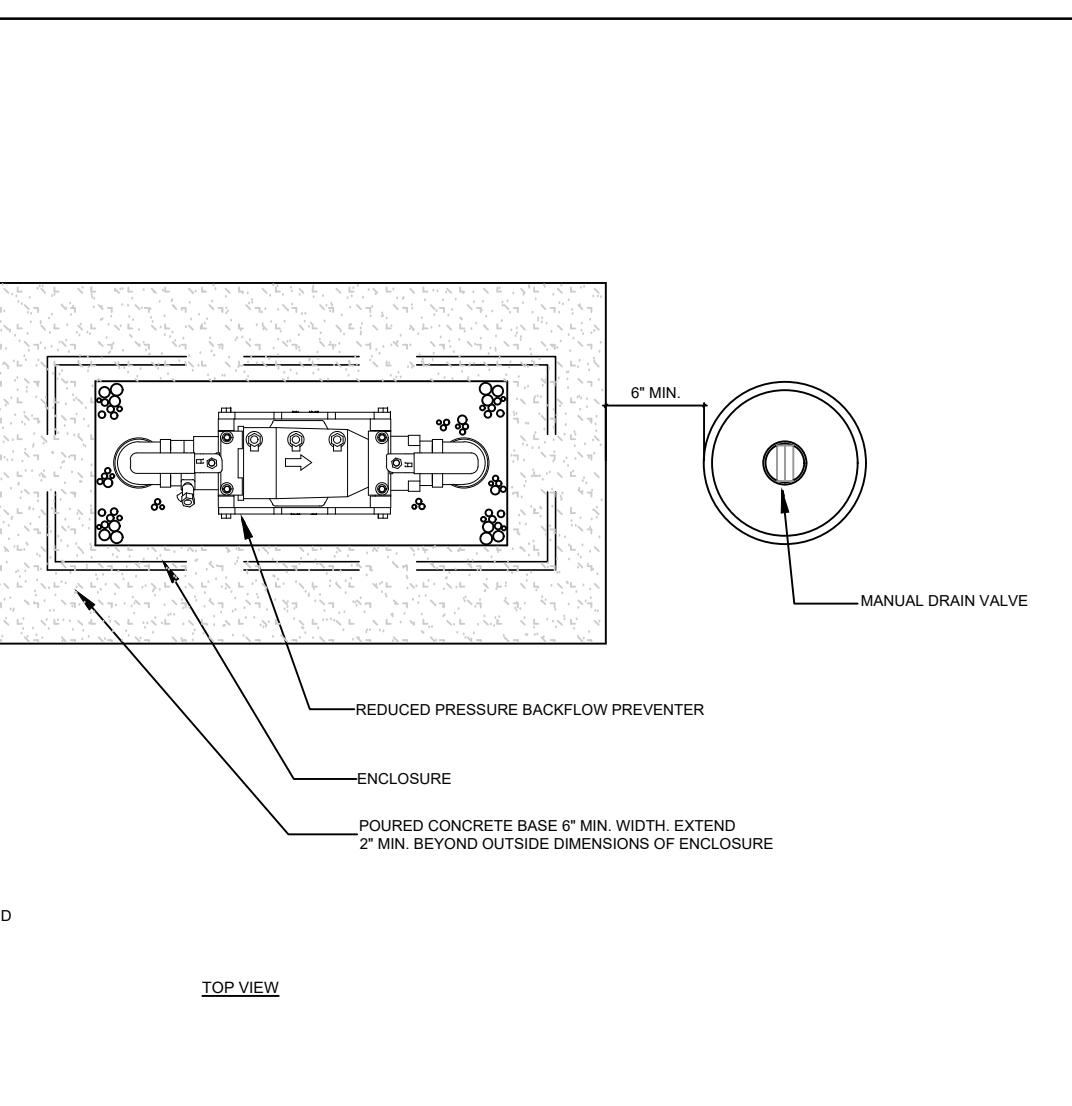
Project No. 23.012
 The LKA Partners Incorporated



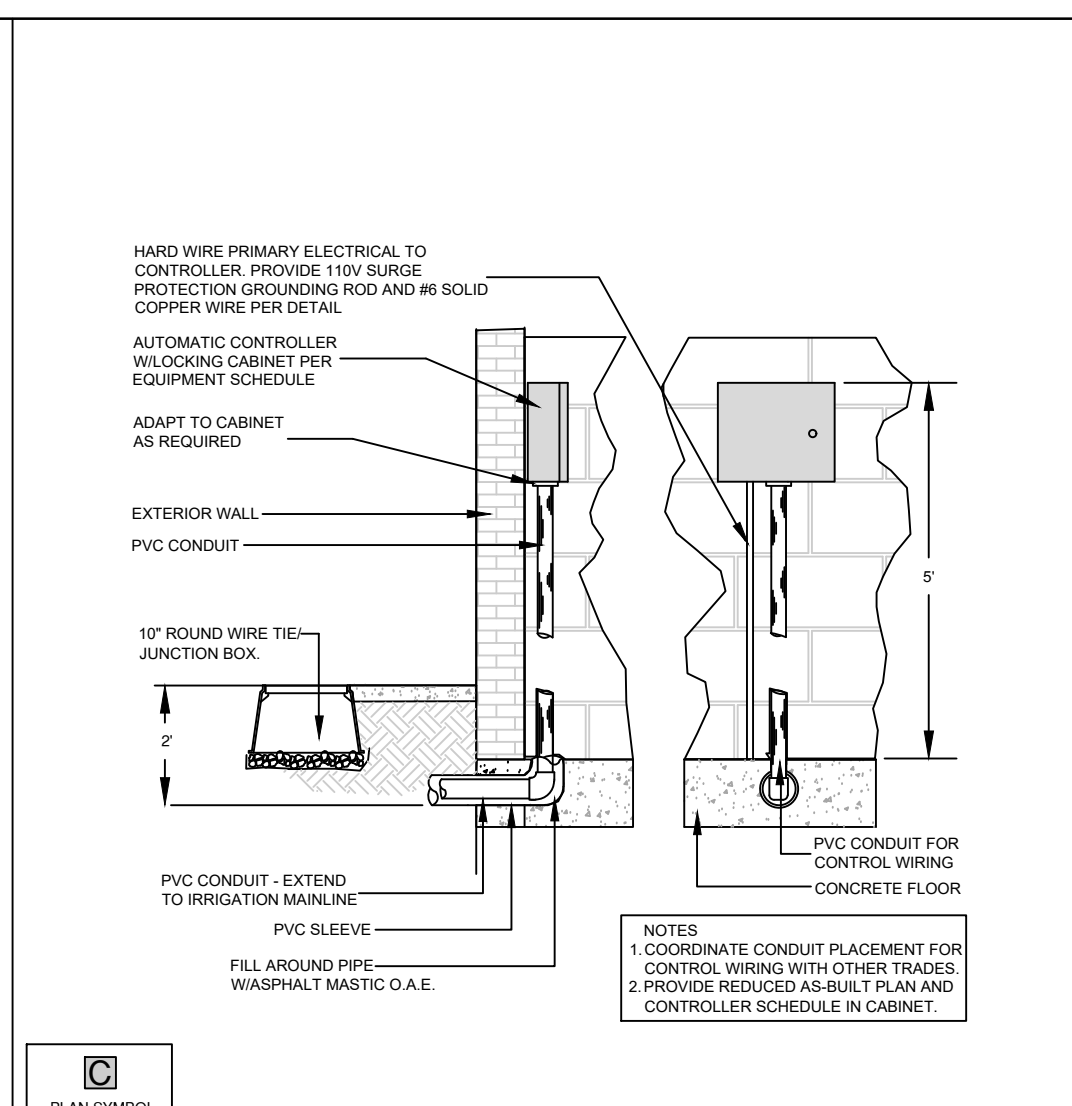
(SPACE INTENTIONALLY BLANK)



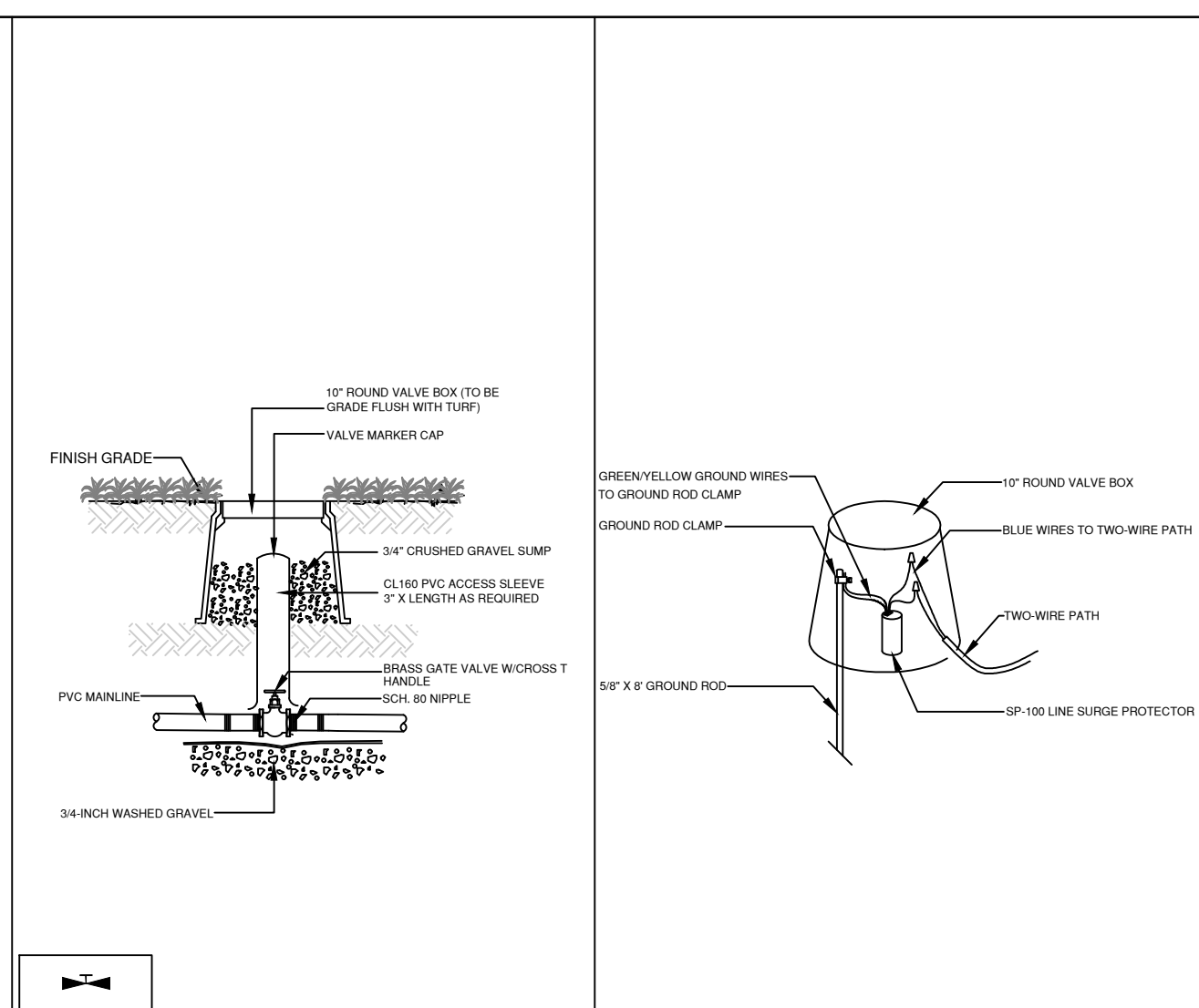
A REDUCED PRESSURE BACKFLOW PREVENTER
NOT TO SCALE



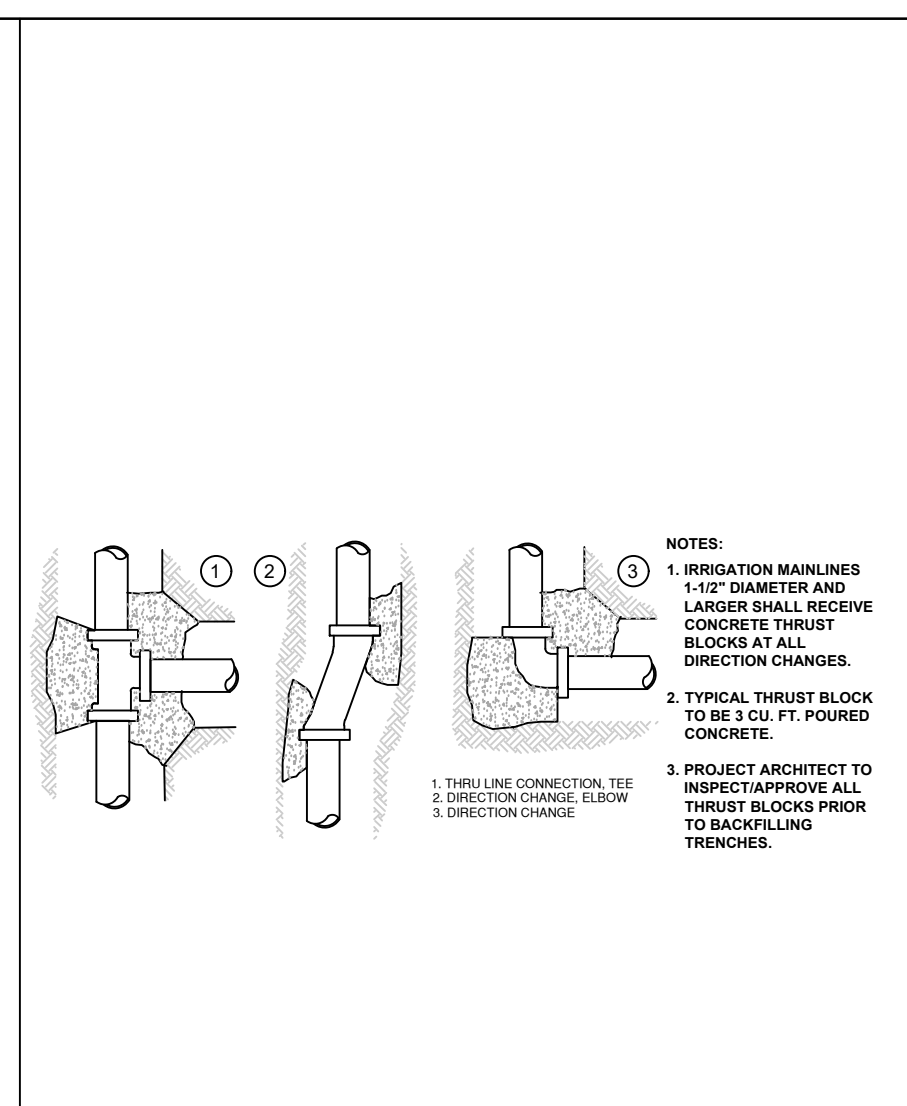
B AUTOMATIC CONTROLLER (WALL MOUNT)
NOT TO SCALE



C MAINLINE ISOLATION VALVE
NOT TO SCALE



D SYSTEM GROUNDING DETAIL
NOT TO SCALE



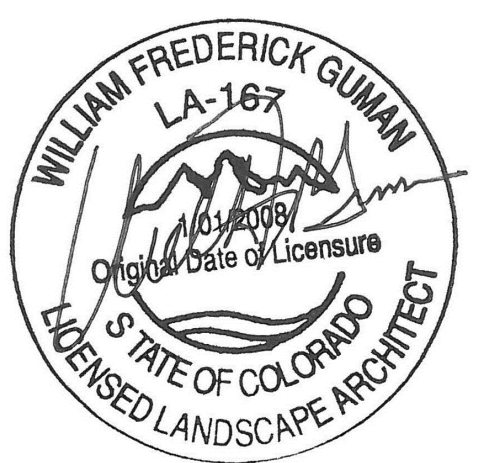
E MAINLINE THRUST BLOCK
NOT TO SCALE

LKA PARTNERS
INCORPORATED
A Professional Corporation for Architecture and Planning
430 North Tejon Street Suite 208
Colorado Springs Colorado 80903
tele: 719.473.8446 fax: 719.473.8448
web: www.lkpartners.com



© Copyright 2024 The LKA Partners, Inc. This document and the information contained herein may not be reproduced or excerpted from without the express written permission of The LKA Partners, Inc. Unauthorized copying, disclosure or construction use are prohibited by copyright law.

Meridian Ranch Fieldhouse
Tax Parcel Schedule Number(s)- 4220303009 & 4220303093
Phase 1 -Fieldhouse, 10559 Rainbow Bridge Dr
Phase 2 - Office Building, 10575 Rainbow Bridge Dr
Peyton, CO 80831
Meridian Service Metro District
11886 Stapleton Drive
Falcon, CO 80831



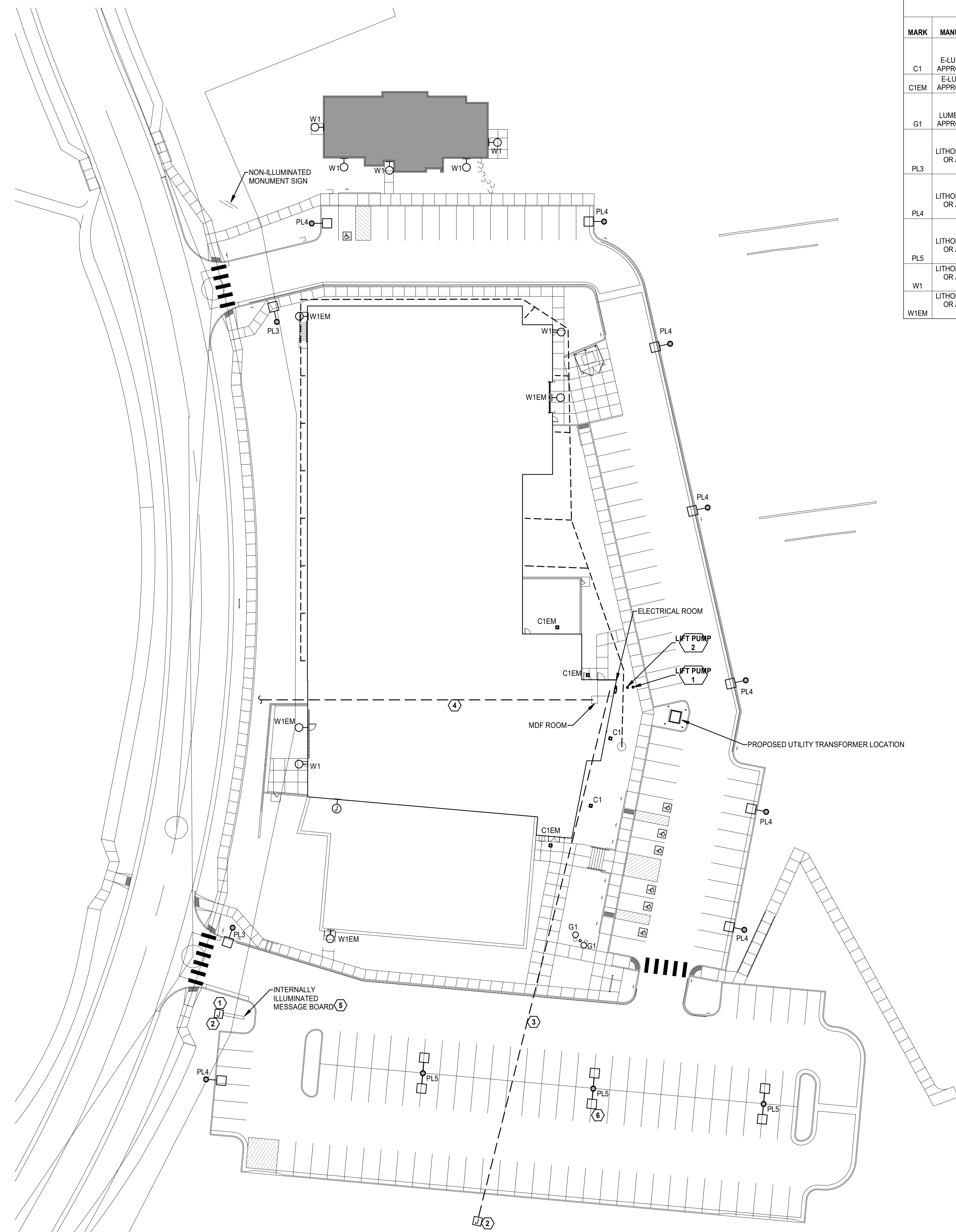
El Paso County
Major Commercial Site
Development Plan

Drawn: WFG GEM
Checked: GEM
Issued: 20 February 2024
Revised: 28 March 2024
Revised:
Final:

Irrigation Plan
LS-4

Project No. 23.012
The LKA Partners Incorporated

5/10/2024 10:38:29 AM



ELECTRIAL SITE DEVELOPMENT PLAN
SCALE: 1" = 30'-0"

LUMINAIRE SCHEDULE - SITE

| MARK | MANUFACTURER | CATALOG NUMBER | LAMP | | | FINISH | MOUNTING | WATTAGE | VOLTAGE | DESCRIPTION |
|------|-------------------------------------|--|---------|-------|--------|-------------|-------------------|---------|---------|--|
| | | | QTY/TYP | CCT | LUMENS | | | | | |
| C1 | E-LUMINAIRE OR APPROVED EQUAL | RCS1-DP-25-40K8-MV-WH-FSP-211 | LED | 4000K | 3300 | WHITE | RECESSED | 22 VA | 277V | 16" SIDE SQUARE LOW GLARE RECESSED CANOPY FIXTURE WITH HIGH DURABILITY ALUMINUM HOUSING, TYPE 5 DISTRIBUTION, -40 DEG. C TO 60 DEG. C, SUITABLE FOR WET LOCATIONS COVERED CANOPY, 0-10V DIMMING DRIVER, OUTDOOR PHOTO MOTION SENSOR, 5 YEAR WARRANTY. |
| C1EM | E-LUMINAIRE OR APPROVED EQUAL | RCS1-DP-25-40K8-MV-WH-FSP-211-RBB | LED | 4000K | 3300 | WHITE | RECESSED | 22 VA | 277V | SAME AS ABOVE, BUT PROVIDED WITH A REMOTE BATTERY BACK-UP FOR EMERGENCY LIGHTING. |
| G1 | LUMENPULSE OR APPROVED EQUAL | LBIL-DO-120/277-40K-NS-CL-NO-FLH-SSB-RBO-ASL-HRS-UL | LED | 4000K | 4375 | STAINLESS | IN-GRADE | 60 VA | 277V | 10-1/4" DIA. X 12-5/8" H IN-GROUND LED UPLIGHT, HIGH PERFORMANCE FIXTURE, DRIE OVER COMPLIANT, NARROW SPOT DISTRIBUTION, CLEAR LENS, NO DIMMING, -40 DEG. F TO 122 DEG. F, IP66, IK10 RATED, -3 DEG. TO +15 DEG. TILT, 360 DEG. ROTATION, 5 YEAR LIMITED WARRANTY. |
| PL3 | LITHONIA LIGHTING OR APPROVED EQUAL | LED-P2-40K-70CRI-T3M-MVOLT-SP-A-NLTAIR2-PIRHN-DOBXD | LED | 4000K | 9762 | DARK BRONZE | POLE ON 2.5' BASE | 68 VA | 277V | 32.71" L X 14.26" W LED POLE LIGHT, SINGLE HEAD, DIE-CAST ALUMINUM HOUSING, TYPE 3 MEDIUM DISTRIBUTION, -40 DEG. C FOR WET LOCATIONS, IP66 RATED, WIRELESS ENABLED BI-LEVEL MOTION/AMBIENT SENSOR, 5 YEAR LIMITED WARRANTY. |
| PL4 | LITHONIA LIGHTING OR APPROVED EQUAL | LED-P2-40K-70CRI-TFTM-MVOLT-S-PA-NLTAIR2-PIRHN-DOBXD | LED | 4000K | 9976 | DARK BRONZE | POLE ON 2.5' BASE | 68 VA | 277V | SAME AS ABOVE BUT TYPE FORWARD THROW MEDIUM DISTRIBUTION. |
| PL5 | LITHONIA LIGHTING OR APPROVED EQUAL | LED-P2-40K-70CRI-T5W-MVOLT-SP-A-NLTAIR2-PIRHN-DOBXD | LED | 4000K | 9976 | DARK BRONZE | POLE ON 2.5' BASE | 136 VA | 277V | SAME AS ABOVE BUT DOUBLE HEAD FIXTURE WITH TYPE 5 WIDE DISTRIBUTION. |
| W1 | LITHONIA LIGHTING OR APPROVED EQUAL | WDGE3-LED-P2-40K-70CRI-R4-MVOLT-SR-M-NLTAIR2-PIR-DOBXD | LED | 4000K | 8779 | DARK BRONZE | WALL | 60 VA | 277 | 9" X 18" WALL MOUNT LED FIXTURE, DIE-CAST ALUMINUM HOUSING ZERO UPLIGHT TYPE DISTRIBUTION, -40 DEG. C MINIMUM AMBIENT, IP66, WIRELESS ENABLED BI-LEVEL MOTION/AMBIENT SENSOR, 5 YEAR LIMITED WARRANTY. |
| W1EM | LITHONIA LIGHTING OR APPROVED EQUAL | WDGE3-LED-P2-40K-70CRI-R4-MVOLT-SR-M-E20WC-NLTAIR2-PIR-DOBXD | LED | 4000K | 8779 | DARK BRONZE | WALL | 60 VA | 277 | SAME AS ABOVE BUT EQUIPPED WITH AN EMERGENCY BATTERY BACK-UP FOR EMERGENCY LIGHTING. |

KEYED NOTES

- 1 PROVIDE TWO CONDUITS: ONE (1) 1" CONDUIT WITH 2#4-#4G FROM THE ELECTRICAL ROOM PANEL MRL1, AND ONE (1) 1" CONDUIT WITH THE APPROPRIATE DATA CABLE FROM THE MDF ROOM TO THE SIGN JUNCTION BOX. COORDINATE EXACT DATA CABLE REQUIREMENTS WITH THE SIGN MANUFACTURER PRIOR TO ROUGH-IN. PROVIDE HORSE RATED SWITCH FOR DISCONNECT.
- 2 PROVIDE AN IN-GRADE POWER JUNCTION/PULL BOX, QUAZITE OR EQUAL WITH PENTAHEAD BOLTS FOR SECURITY. LABEL AS "ELECTRIC".
- 3 PROVIDE AN EMPTY 4" CONDUIT WITH PULLSTRING FROM THE ELECTRICAL ROOM TO JUNCTION BOX FOR FUTURE USE.
- 4 PROVIDE AN EMPTY 3" CONDUIT WITH PULLSTRING FROM TELECOM DEMARCATION TO MDF ROOM. COORDINATE WITH TELECOM TRADE PRIOR TO ROUGH-IN.
- 5 DAKTRONIKS DOUBLE SIDED ELECTRONIC MESSAGE CENTER. PROVIDE PHOTOCELL AND DIMMER SWITCH FOR CONTROL AND TIE TO LIGHTING CONTROL PANEL.
- 6 MOVE FIXTURE 5' WEST TO AVOID EXISTING UTILITY EASEMENT WHEN NECESSARY.

DPE - SHEET INDEX

| SHEET | TITLE |
|-------|-------------------------------------|
| DPE1 | ELECTRICAL SITE DEVELOPMENT PLAN |
| DPE2 | DEVELOPMENTAL SITE PHOTOMETRIC PLAN |
| DPE3 | CUT SHEETS |

Meridian Ranch Fieldhouse

Tax Parcel Schedule Number(s)- 4220303009 & 4220303093
Phase 1 - Fieldhouse, 10559 Rainbow Bridge Dr
Phase 2 - Office Building, 10575 Rainbow Bridge Dr
Peyton, CO 80831
Meridian Service Metro District
11886 Stapleton Drive
Falcon, CO 80831

LKA PARTNERS
INCORPORATED
A Professional Corporation for Architecture and Planning
PLANT
ENGINEERING CONSULTANTS
300 WEST FALCON BLVD. SUITE 1000 FALCON, COLORADO 80804
430 North Tejon Street Suite 208
Colorado Springs Colorado 80903
tele: 719.473.8446 fax: 719.473.8448
web: www.lkapartners.com

© Copyright 2024 The LKA Partners, Inc. This document and the information contained herein may not be reproduced or excerpted from without the express written permission of The LKA Partners, Inc. Unauthorized copying, disclosure or construction use are prohibited by copyright law.

El Paso County
Major Commercial Site
Development Plan

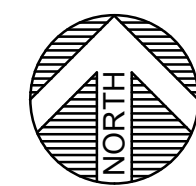
Drawn: CAO/JDH
Checked: MPP
Issued: 05/10/2024
Revised:

ELECTRICAL SITE DEVELOPMENT PLAN

DPE1

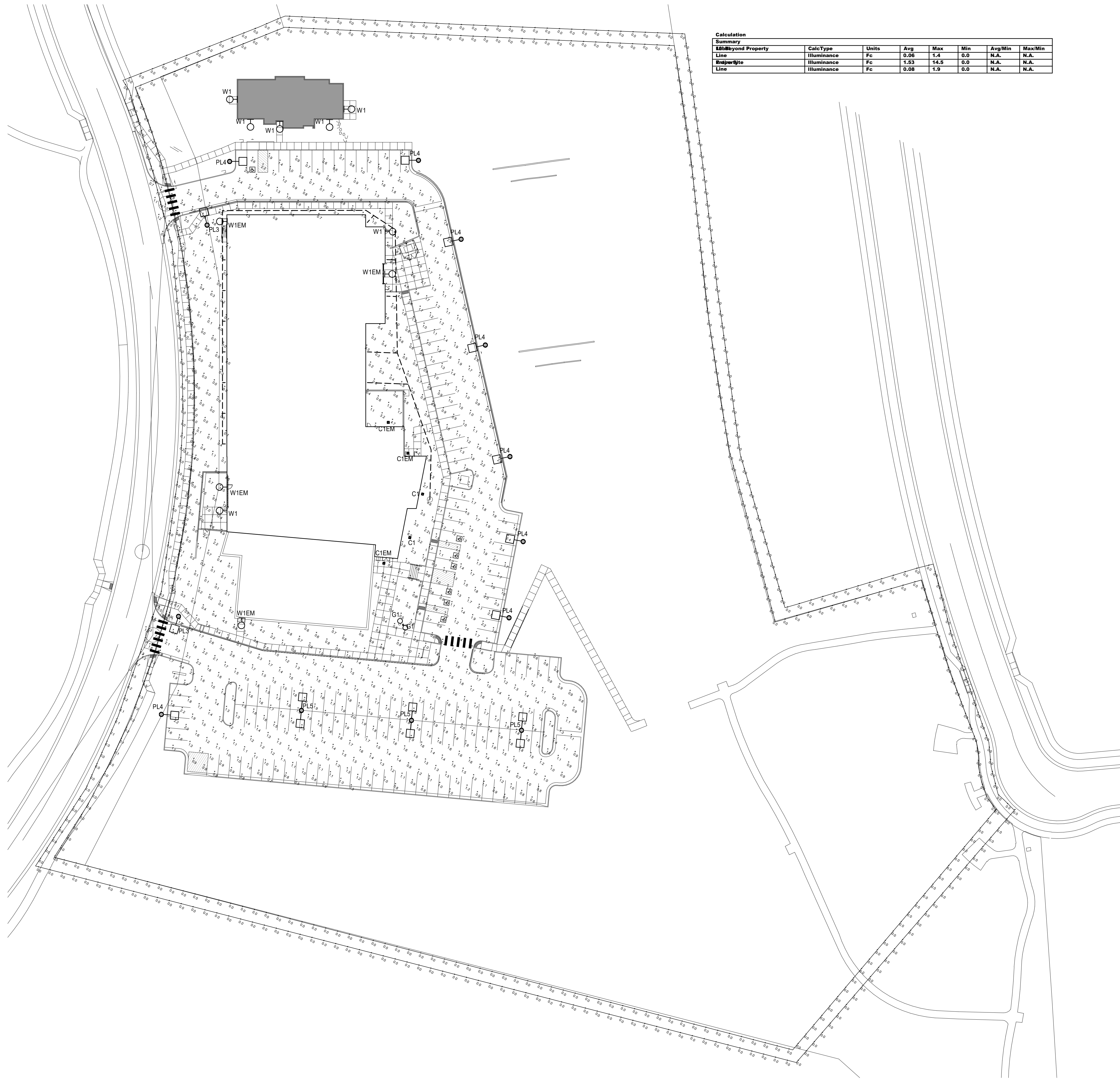
Project No. 23085
The LKA Partners Incorporated

5/10/2024 10:38:29 AM



DEVELOPMENTAL SITE PHOTOMETRIC PLAN

SCALE: 1" = 40'-0"



Meridian Ranch Fieldhouse

Tax Parcel Schedule Number(s)- 4220303009 & 4220303093
 Phase 1 - Fieldhouse, 10559 Rainbow Bridge Dr
 Phase 2 - Office Building, 10575 Rainbow Bridge Dr

Peyton, CO 80831
 Meridian Service Metro District
 11886 Stapleton Drive
 Falcon, CO 80831

El Paso County
 Major Commercial Site
 Development Plan

Drawn: CAO/JDH
 Checked: MPP
 Issued: 05/10/2024
 Revised:

DEVELOPMENTAL SITE
 PHOTOMETRIC PLAN

DPE2

Project No. 23085
 The LKA Partners Incorporated

© Copyright 2024 The LKA Partners, Inc. This document and the information contained herein may not be reproduced or excerpted from without the express written permission of The LKA Partners, Inc. Unauthorized copying, disclosure or construction use are prohibited by copyright law.



LKA PARTNERS
 INCORPORATED

A Professional Corporation for Architecture and Planning

430 North Tejon Street Suite 208
 Colorado Springs Colorado 80903
 tele: 719.473.8446 fax: 719.473.8448
 web: www.lkpartners.com

Technical Specifications

CENTURY DP Series Low Glare Recessed Canopy

Product Description
The CENTURY DP Series LED Luminaire has a form factor designed to exceed standards for all recessed canopy applications.

- Product Performance
- Wattage Range: 21W-53W
- Input Voltage: 120-277V or 277-480V
- CCT: 3000K, 4000K or 5000K (Amber and custom CCT available)

eLuminaire logo
Date: Location:
Type: Project:
Catalog #:

Ordering Guide

Table with columns: Series, Distribution, Output Type, CCT Color, Voltage, Fixture color, Options, Custom Size.

Page 1 of 3 | www.luminaire.com | designed and engineered in the USA | contact sales@luminaire.com

TYPES C1,C1EM

Technical Specifications

CENTURY DP Series

Product Specifications

- Construction & Materials
- Aluminum housing with multi stage pre-treatment and high-durability
- TGIC powder coat finish
- UV Stabilized single PMMA Lens - Tamper resistant

Photometry

All published photometric testing data is performed to IESNA LM79-08 standards by a NVLAP accredited laboratory.

Table with columns: Output Type, Initial Delivered Lumens, Initial Delivered Lumens, Initial Delivered Lumens, Initial Delivered Lumens, Initial Delivered Lumens, Initial Delivered Lumens.

The information in this document is subject to change without notice.

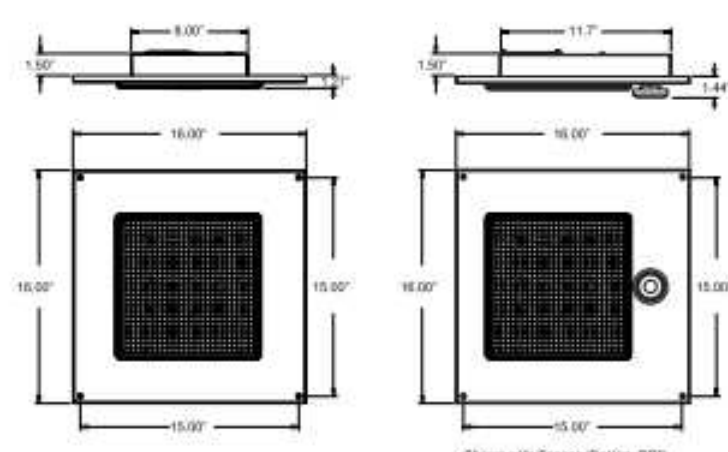


Figure Weight: 8.0 to 9.75 lbs

Page 2 of 3 | www.luminaire.com | designed and engineered in the USA | contact sales@luminaire.com

eLuminaire

D-Series Size 1 LED Area Luminaire
d'series logo
Specifications
EPA: 0.62 ft
Length: 32.71"
Width: 14.26"
Height H1: 7.88"
Height H2: 2.73"
Weight: 34 lbs

Ordering Information

EXAMPLE: DSX1 LED P7 40K 70CRI T3M MVOLT SPA NLTAIR2 PIRHN DBXB

Table with columns: Series, LED, Color Temperature, Color Rendering Index, Distribution, Voltage, Mounting, Shipped included.

Table with columns: Shipped installed, Other options, Shipped separately, Other options.

One Lithonia Way • Corning, Georgia 30012 • Phone: 1-800-765-SEEV (5378) | www.lithonia.com | DSX1 LED Rev. 06/25/23 Page 1 of 10

TYPES PL3, PL4, PL5

Photometric Diagrams

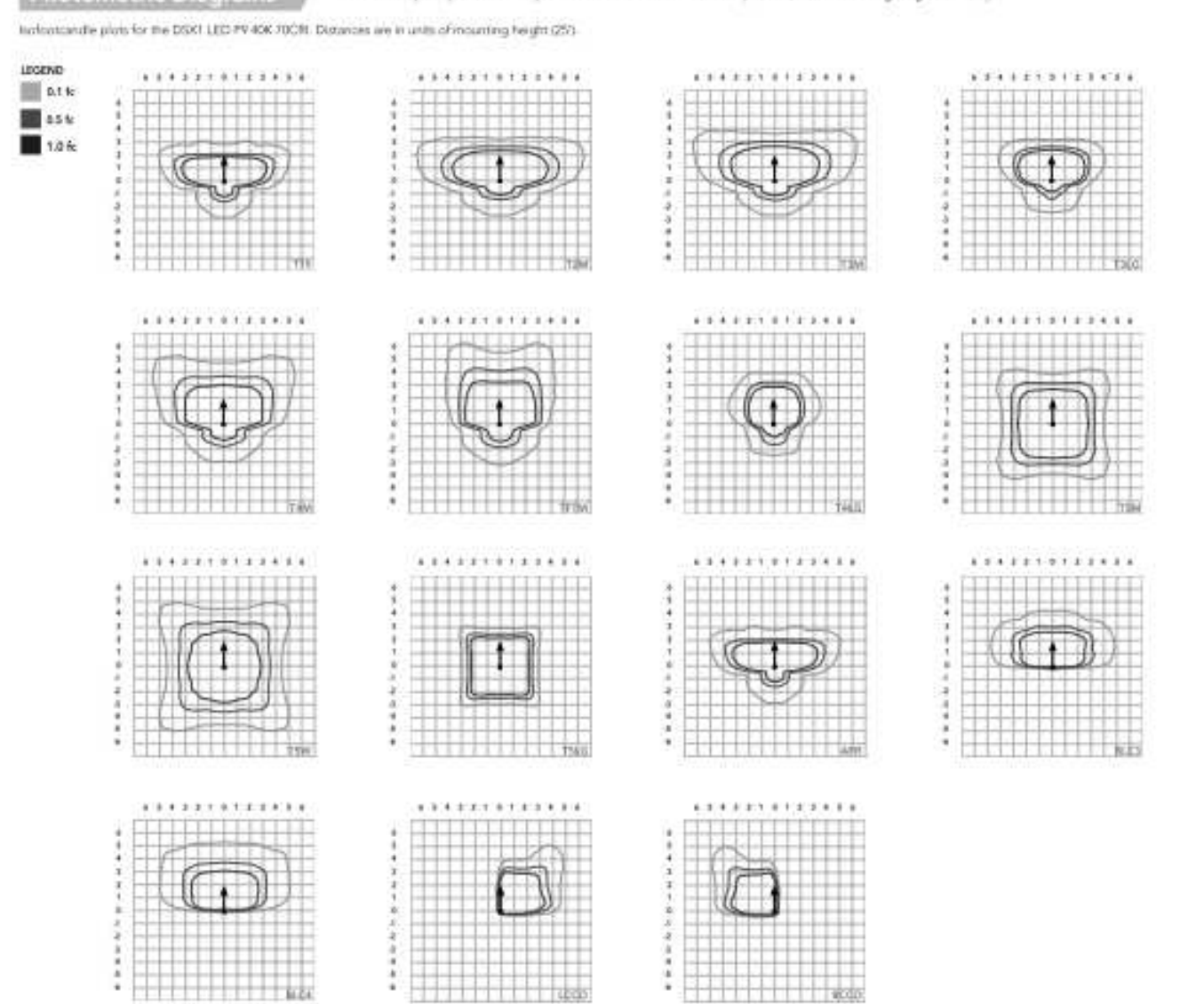


Table with columns: Series, LED, Color Temperature, Color Rendering Index, Distribution, Voltage, Mounting, Shipped included.

One Lithonia Way • Corning, Georgia 30012 • Phone: 1-800-765-SEEV (5378) | www.lithonia.com | DSX1 LED Rev. 06/25/23 Page 2 of 10

TYPE G1

Specification Sheet

Project Name: Qty:
Type: Catalog / Part Number:
Front view:
Top view:
Description: The lumenbeam Inground Large is a high performance, ground recessed LED projector designed to solve a range of industrial lighting challenges...

Table with columns: Symmetric, Asymmetric, Delivered output (lm), Intensity (peak cd), Power (120V) (W).

lumenpulse
1220 Marlowe Way • Corning, Georgia 30012 • Phone: 1-877-591-8833 | 514.937.3822 | 514.937.4289

Specification Sheet

Optics
Performance
Physical
Blockout Material: Fiberglass reinforced polymer
Lens Material: Tempered glass
Hardware Material: Stainless steel
Trim Finish: Brushed stainless steel, Polished stainless steel

Table with columns: Color and Color Temperatures, Controls, Construction, Trim Finishes, Installation, Accessories (order separately), Control Boxes.

lumenpulse
1220 Marlowe Way • Corning, Georgia 30012 • Phone: 1-877-591-8833 | 514.937.3822 | 514.937.4289

WEDGE3 LED Architectural Wall Sconce
Specifications
Depth (D1): 6"
Depth (D2): 1.5"
Height: 9"
Width: 18"
Weight: 19.5 lbs

Table with columns: Luminaire, Standard DMR, P1, Color, P1, P2, P3, P4, P5, P6.

Table with columns: Luminaire, Standard DMR, P1, Color, P1, P2, P3, P4, P5, P6.

Table with columns: Series, Package, Color Temperature, CRI, Distribution, Voltage, Mounting, Shipped included.

Table with columns: System, Standalone Sensors/Controls, Networked Sensors/Controls, Accessories, Control Boxes.

LITHONIA LIGHTING
COMMERCIAL OUTDOOR
One Lithonia Way • Corning, Georgia 30012 • Phone: 1-800-765-SEEV (5378) | www.lithonia.com | WEDGE3 LED Rev. 05/11/23

TYPES W1/W1EM

Control / Sensor Options

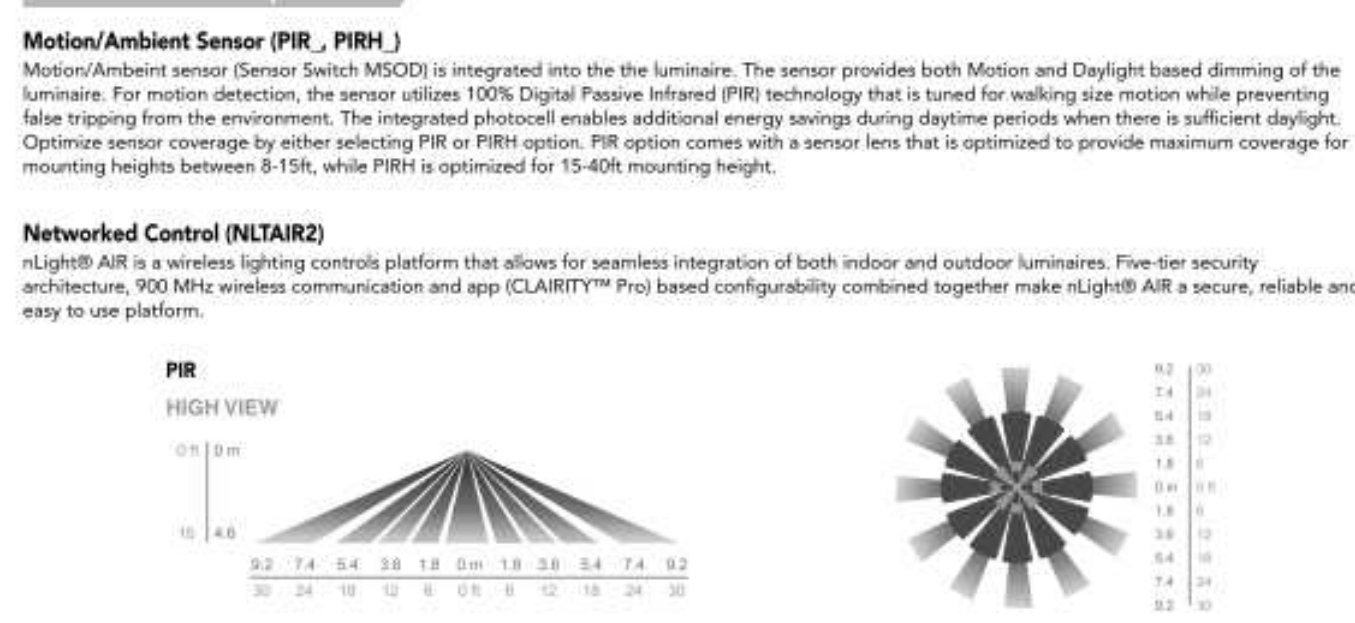


Table with columns: Motion/Ambient Sensor (PIR, PIRH), Network Control (NLTAIR2), Motion/Ambient Sensor Default Settings.

LITHONIA LIGHTING
COMMERCIAL OUTDOOR
One Lithonia Way • Corning, Georgia 30012 • Phone: 1-800-765-SEEV (5378) | www.lithonia.com | WEDGE3 LED Rev. 05/11/23

L K A P A R T N E R S INCORPORATED
A Professional Corporation for Architecture and Planning

PLANT ENGINEERING CONSULTANTS
330 WEST FALCON BLVD. SUITE 200
PEYTON, CO 80831

© Copyright 2024 The LKA Partners, Inc. This document and the information contained herein may not be reproduced or exceeded from without the express written permission of the LKA Partners, Inc. Unauthorized copying, disclosure or construction use are prohibited by copyright law.

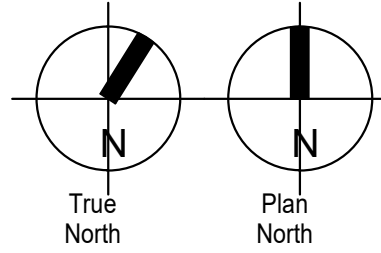
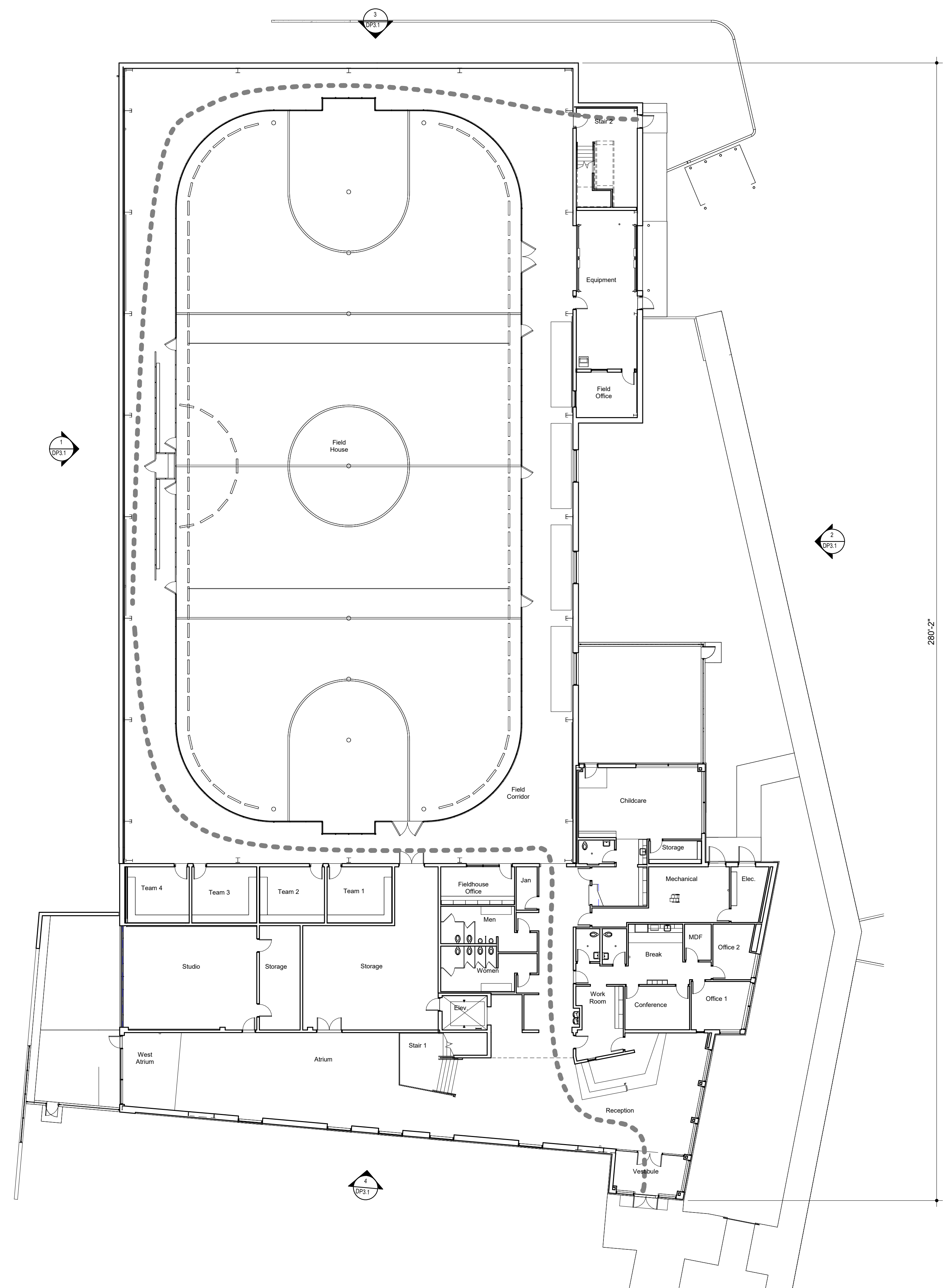
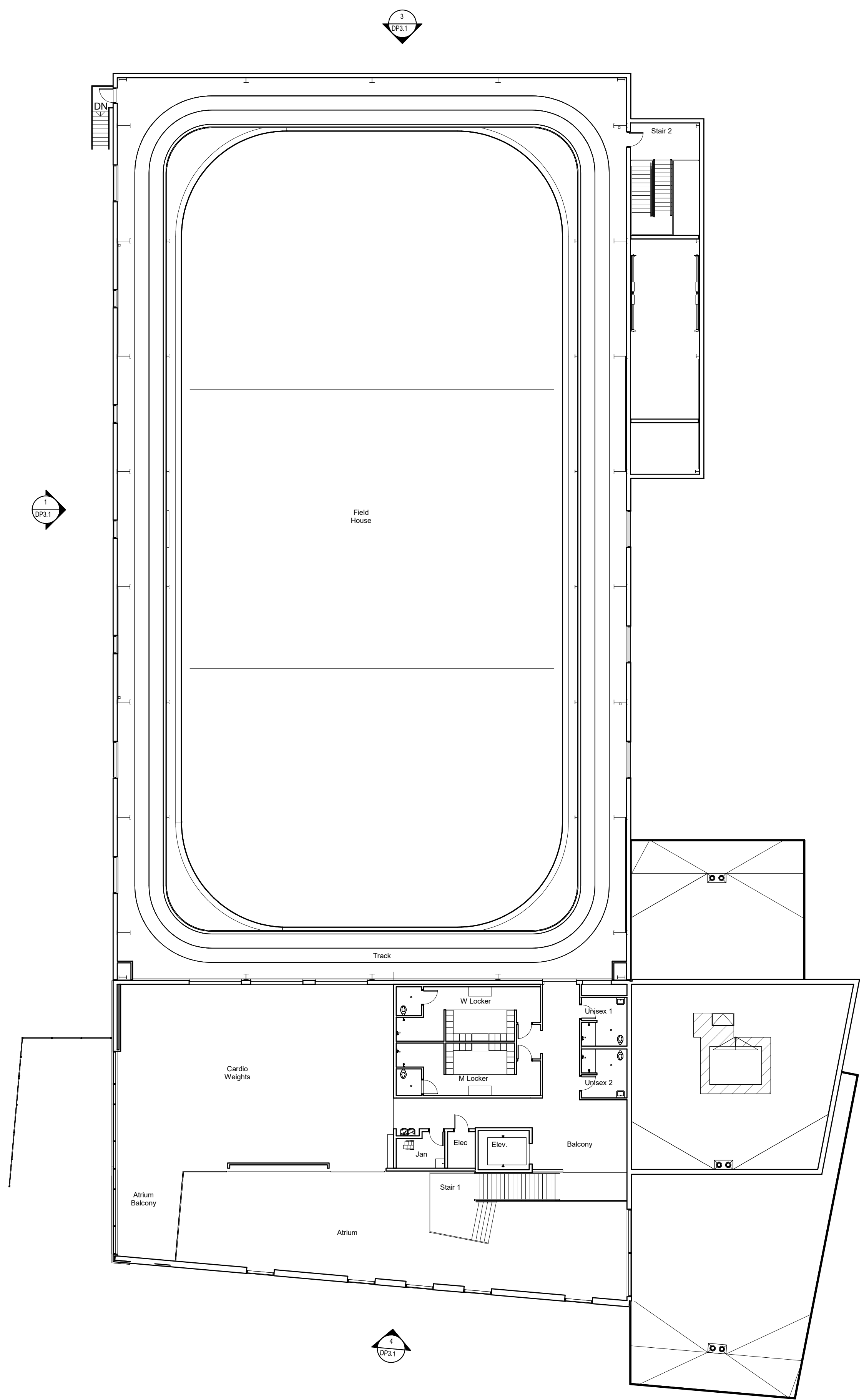
Meridian Ranch Fieldhouse
Tax Parcel Schedule Number(s) - 4220303009 & 4220303093
Phase 1 - Fieldhouse, 10559 Rainbow Bridge Dr
Phase 2 - Office Building, 10575 Rainbow Bridge Dr
Peyton, CO 80831
Meridian Service Metro District
11886 Stapleton Drive
Falcon, CO 80831

EI Paso County Major Commercial Site Development Plan

Drawn: CAO/JDH
Checked: MPP
Issued: 05/10/2024
Revised:

CUT SHEETS

DPE3
Project No. 23085
The LKA Partners Incorporated



DP2.2

Project No. 23-012
The LKA Partners Incorporated

Floor Plans

| | |
|----------|----------|
| Drawn: | SLH |
| Checked: | DKO |
| Issued: | 02/21/24 |
| Revised: | |

El Paso County
Major Commercial Site
Development Plan

Meridian Ranch Fieldhouse

Tax Parcel Schedule Number(s) - 4220303009 & 4220303093
Phase 1 - Fieldhouse, 10559 Rainbow Bridge Dr
Phase 2 - Office Building, 10575 Rainbow Bridge Dr
Peyton, CO 80831

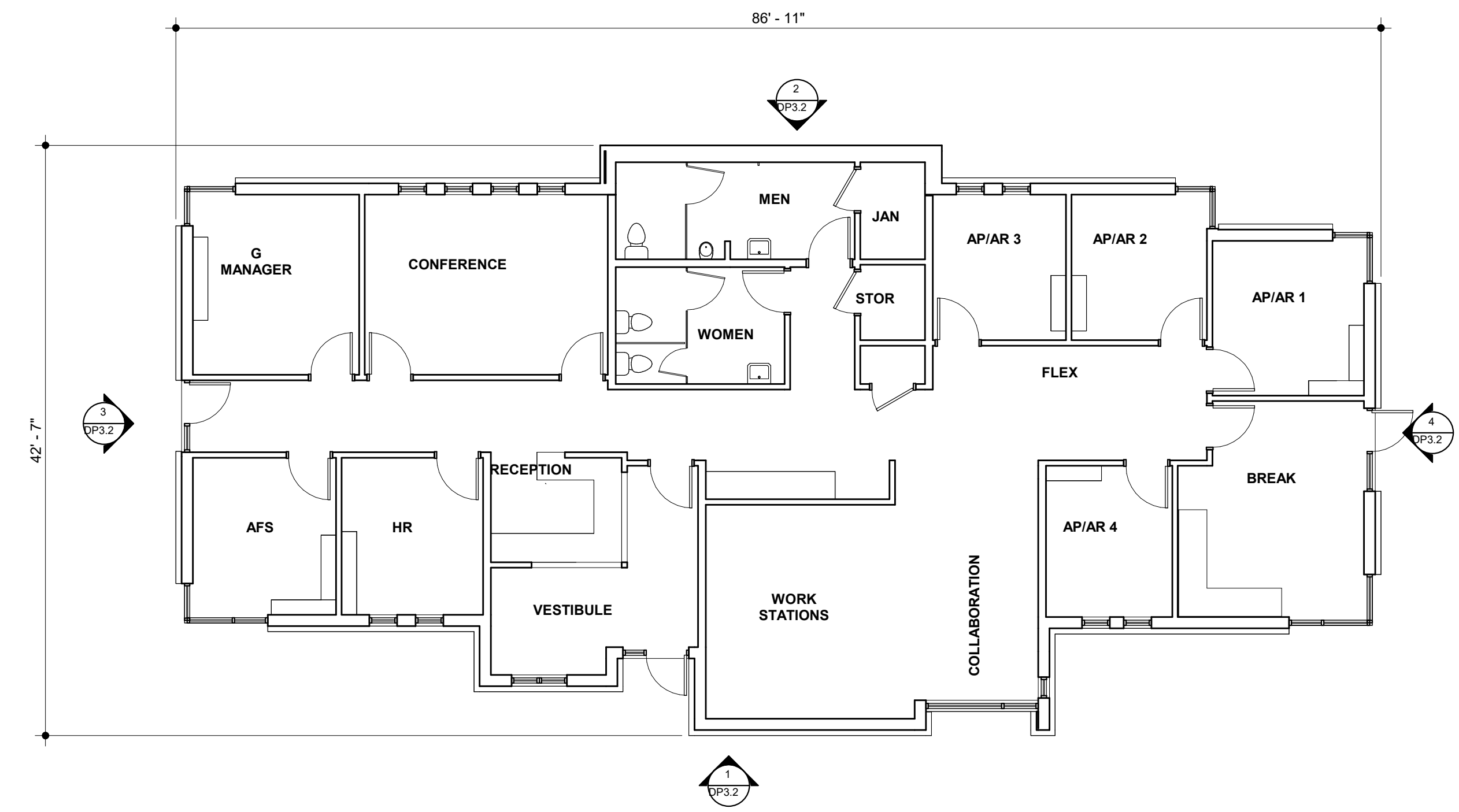
Meridian Service Metro District
11886 Stapleton Drive
Falcon, CO 80831

© Copyright 2024 The LKA Partners, Inc. This document and the information contained herein may not be reproduced or excerpted from without the express written permission of The LKA Partners, Inc. Unauthorized copying, disclosure or distribution is prohibited by copyright law.

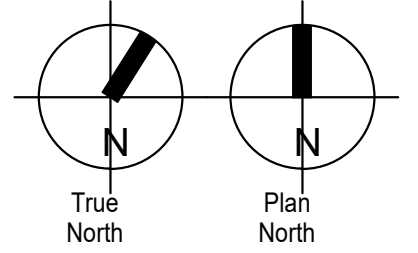
LKA PARTNERS
INCORPORATED

A Professional Corporation for Architecture and Planning

430 North Tejon Street, Suite 208
Colorado Springs, Colorado 80903
Tel: 719.473.8448 Fax: 719.473.8448
Web: www.lkpartners.com



1 Floor Plan
Scale: 1/8" = 1'-0"



© Copyright 2024 The LKA Partners, Inc. This document and the information contained herein may not be reproduced or excerpted from without the express written permission of The LKA Partners, Inc. Unauthorized copying, disclosure or construction use is prohibited by copyright law.

Meridian Service Metropolitan District Offices
Tax Parcel Schedule Number(s) - 10559 Rainbow Bridge Dr
Phase 1 - Fieldhouse, 10559 Rainbow Bridge Dr
Phase 2 - Office Building, 10575 Rainbow Bridge Dr
Peyton, CO 80831

Meridian Service Metro District
11886 Stapleton Drive
Falcon, CO 80831

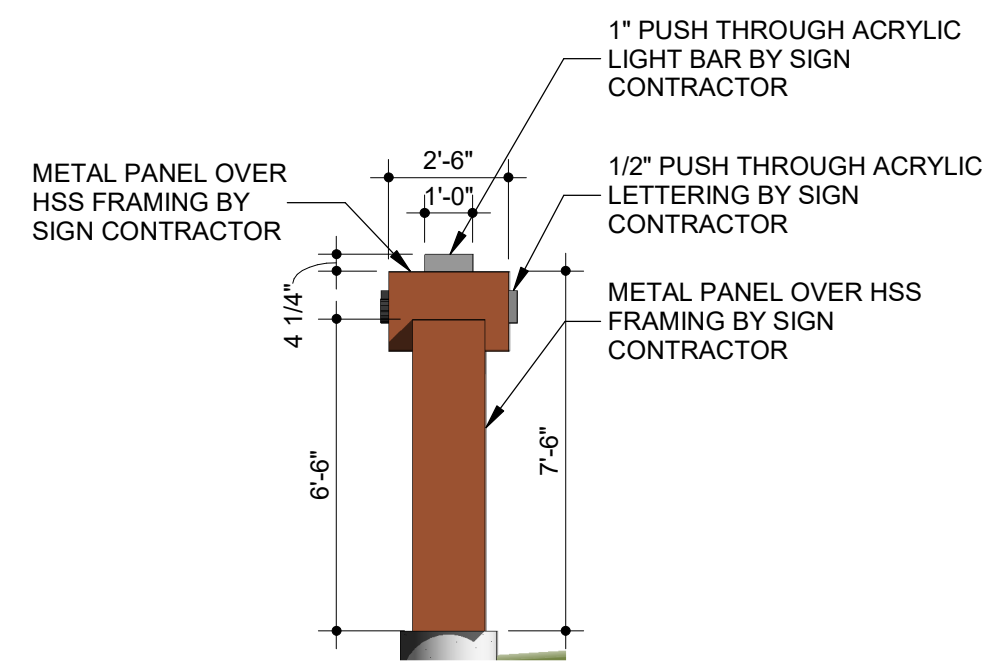
El Paso County
Major Commercial Site
Development Plan

Drawn: SLH
Checked: DKO
Issued: 12/31/19
Revised:

Office Building Plan

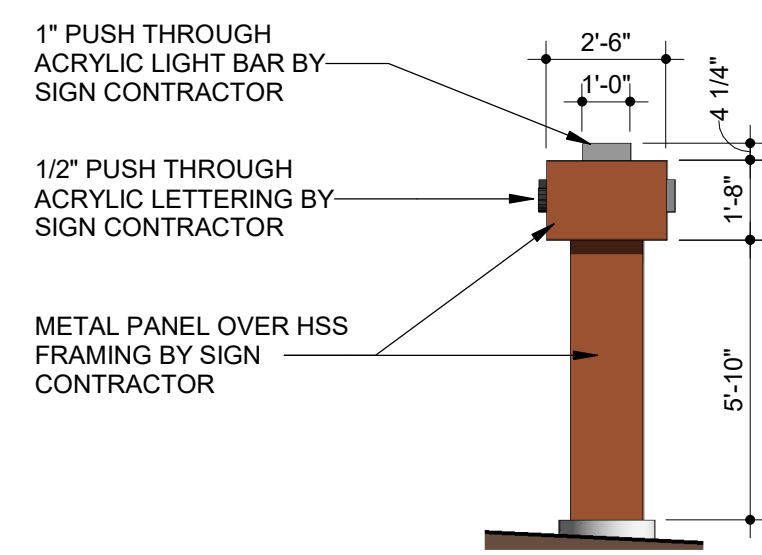
DP2.3

Project No. 23-014
The LKA Partners Incorporated



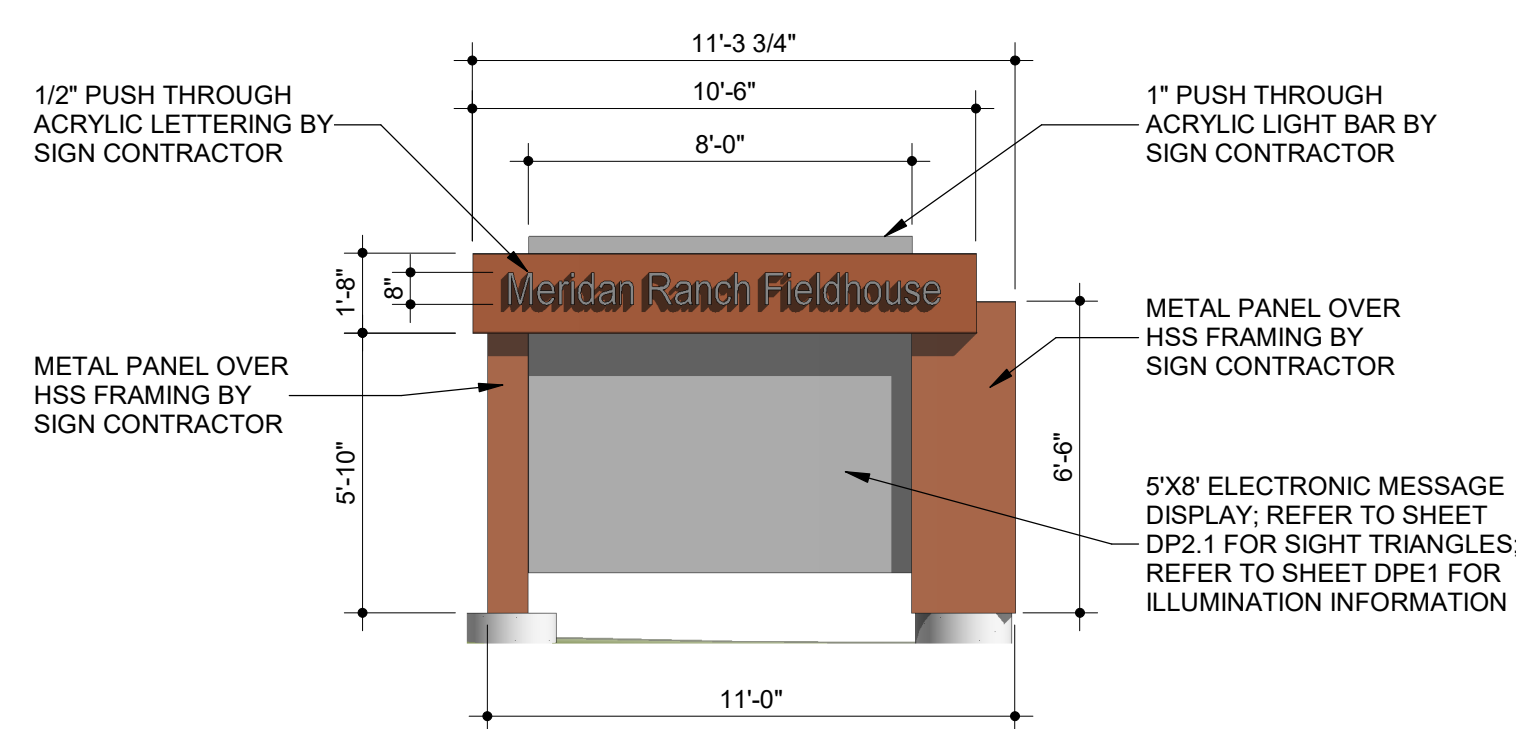
5 Monument Sign East Elevation

Scale: 1/4" = 1'-0"



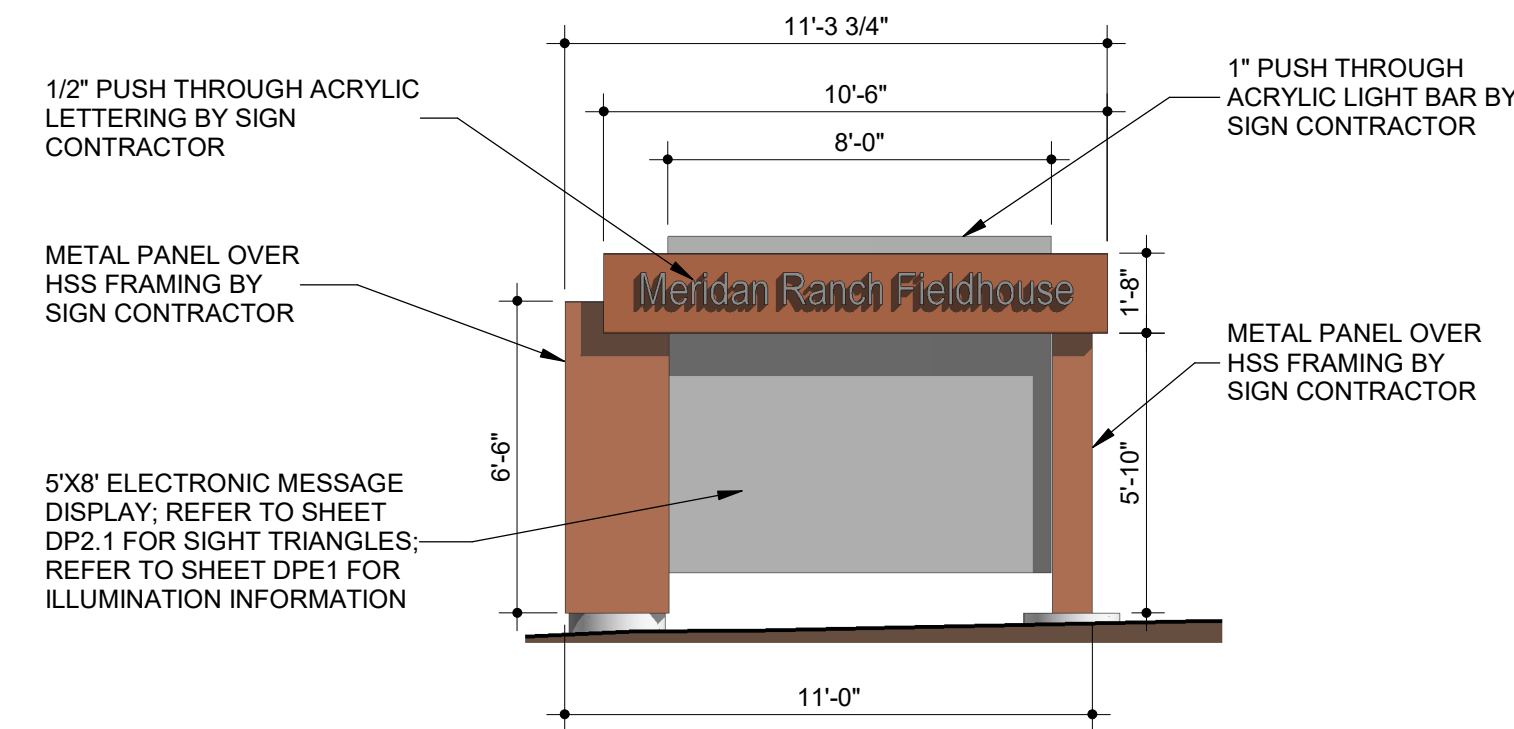
6 Monument Sign West Elevation

Scale: 1/4" = 1'-0"



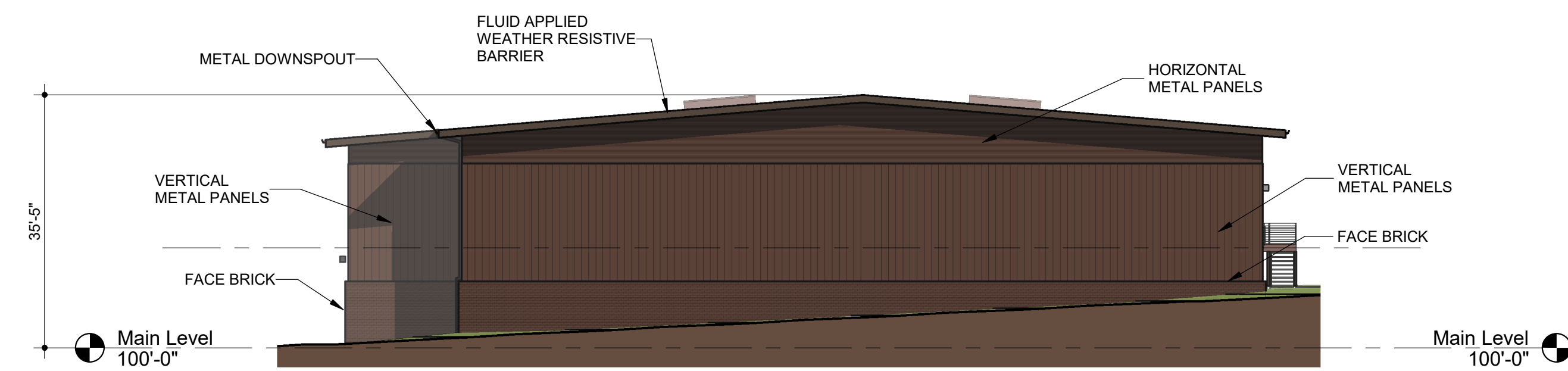
7 Monument Sign South Elevation

Scale: 1/4" = 1'-0"



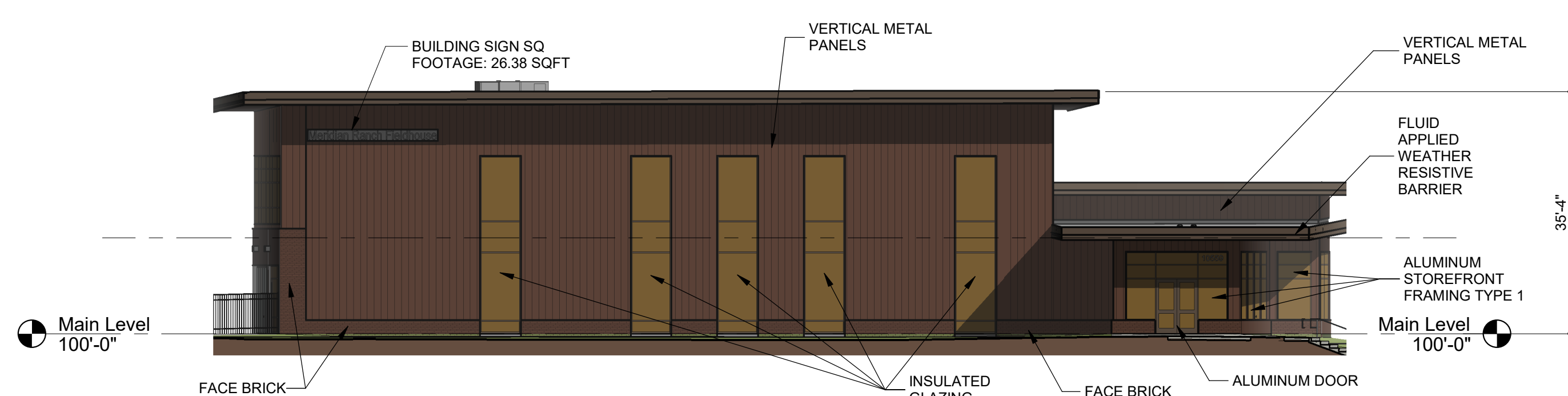
8 Monument Sign North Elevation

Scale: 1/4" = 1'-0"



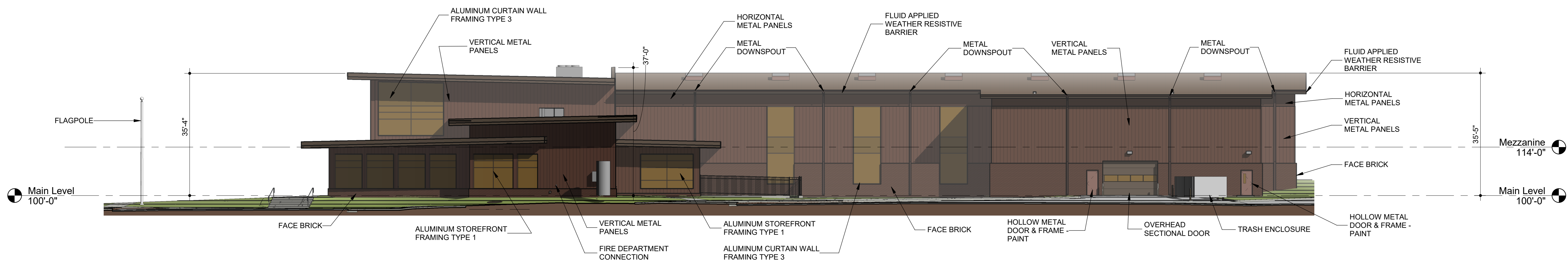
3 DP North Elevation

Scale: 1/16" = 1'-0"



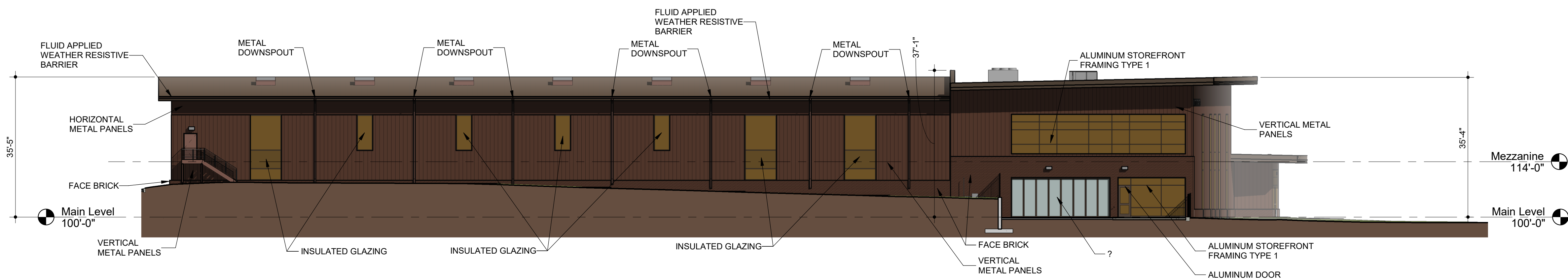
4 DP South Elevation

Scale: 1/16" = 1'-0"



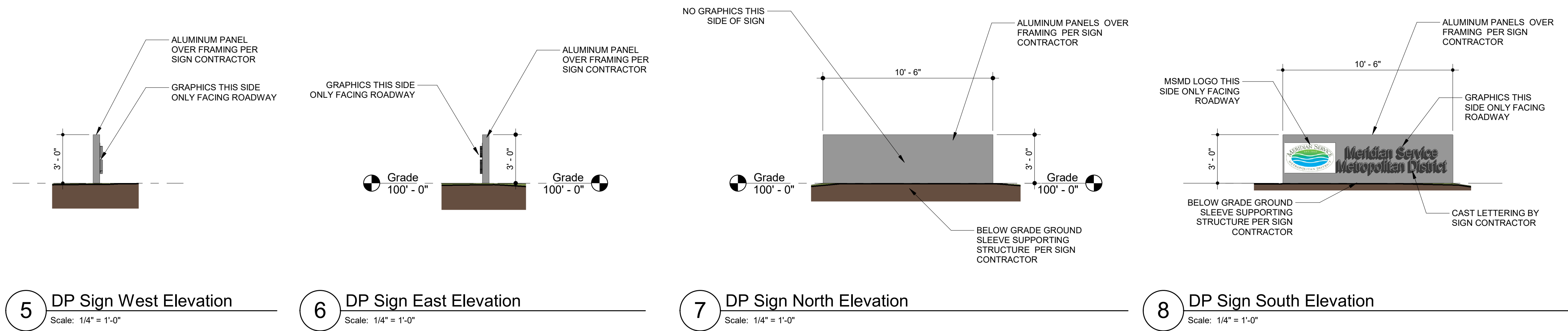
2 DP East Elevation

Scale: 1/16" = 1'-0"



1 DP West Elevation

Scale: 1/16" = 1'-0"

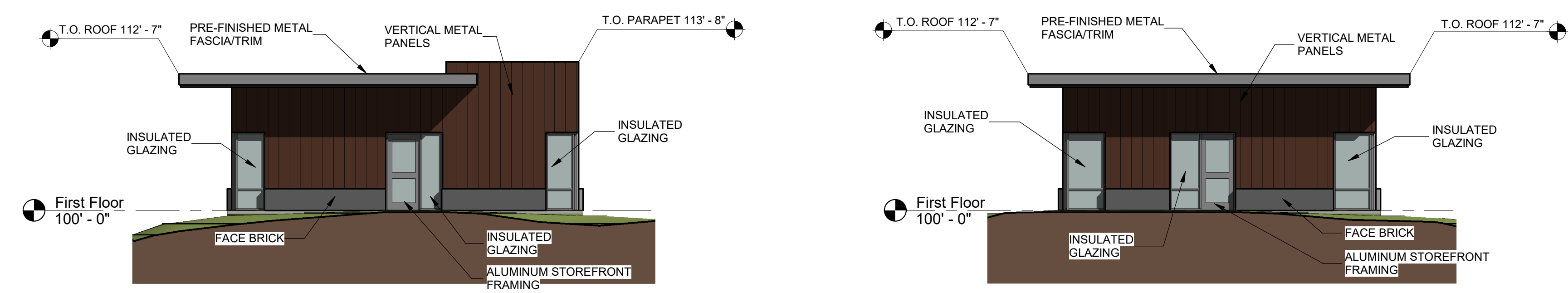


5 DP Sign West Elevation
 Scale: 1/4" = 1'-0"

6 DP Sign East Elevation
 Scale: 1/4" = 1'-0"

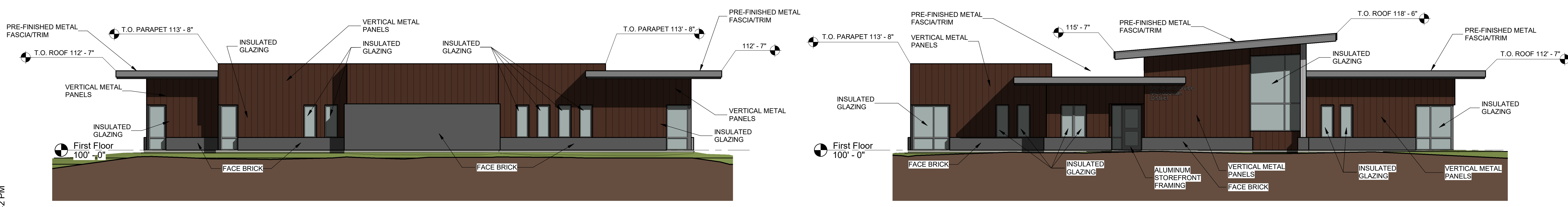
7 DP Sign North Elevation
 Scale: 1/4" = 1'-0"

8 DP Sign South Elevation
 Scale: 1/4" = 1'-0"



3 DP West Elevation
 Scale: 1/8" = 1'-0"

4 DP East Elevation
 Scale: 1/8" = 1'-0"



2 DP North Elevation
 Scale: 1/8" = 1'-0"

1 DP South Elevation
 Scale: 1/8" = 1'-0"

5/13/2024 3:08:42 PM