

A	11/09/17	CONCEPT	IMR
B	01/11/18	ZD REVIEW	IMR
C	02/19/18	LL COMMENTS	IMR

1st REVIEW KMS 2nd REVIEW ERR

**CHARLES
STECKLY**

ARCHITECTURE

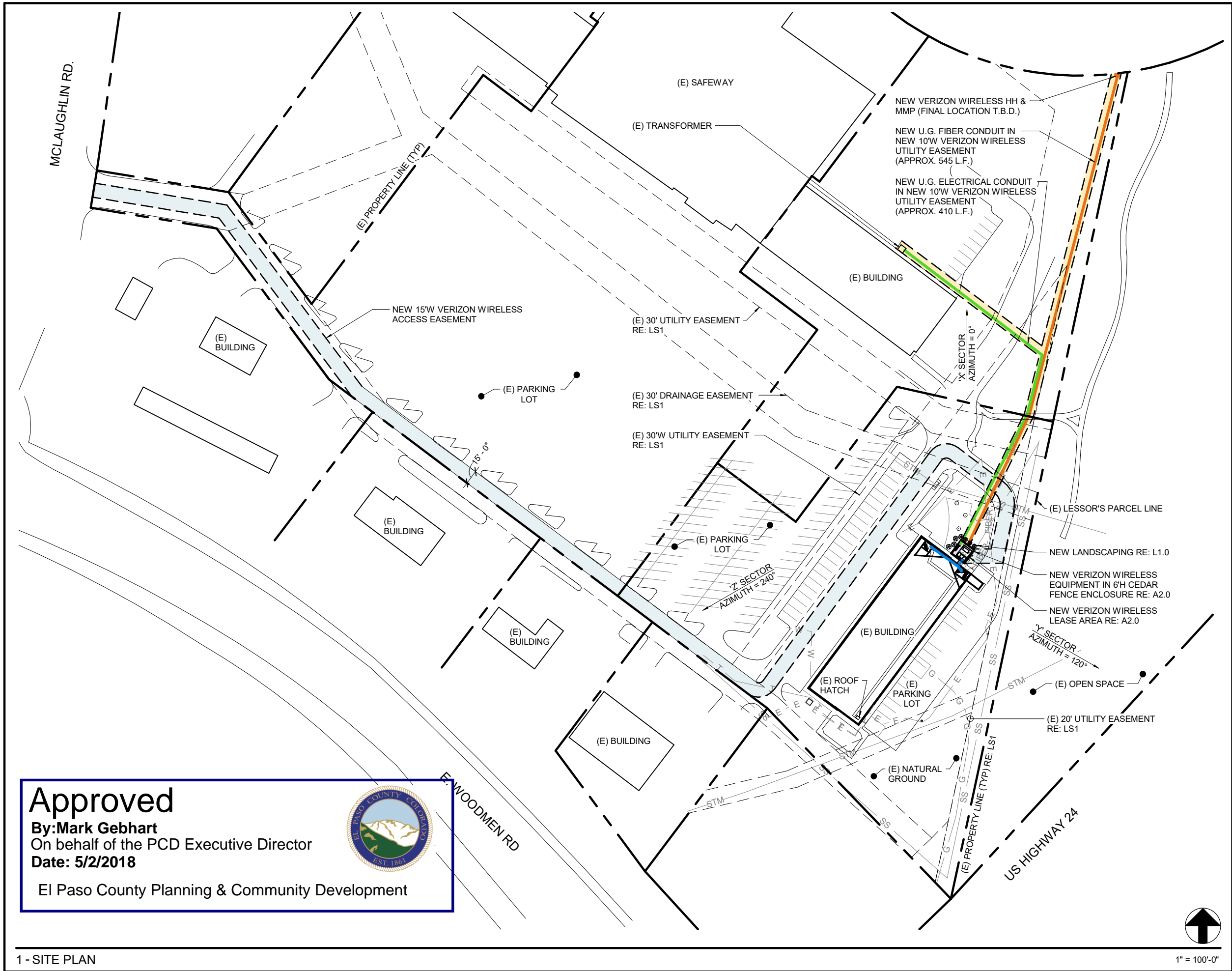
5935 SOUTH ZANG STREET, SUITE 280
LITTLETON, COLORADO 80127
OFFICE: 303.932.9974

**NOT FOR
CONSTRUCTION**

SITE PLAN

A1.0

- BBU/RRH HYBRID & COAX CABLES
- MW/FIBER EQ. FIBER
- OV/PELEC. EQ. POWER/GROUNDING
- ACCESS/UTILITY EASEMENT GEN. CONST. UTILITY EASEMENT
- LEASE AREA EXISTING EASEMENT
- ANTENNAS
- PENETRATIONS



Approved
By: Mark Gebhart
On behalf of the PCD Executive Director
Date: 5/2/2018
El Paso County Planning & Community Development



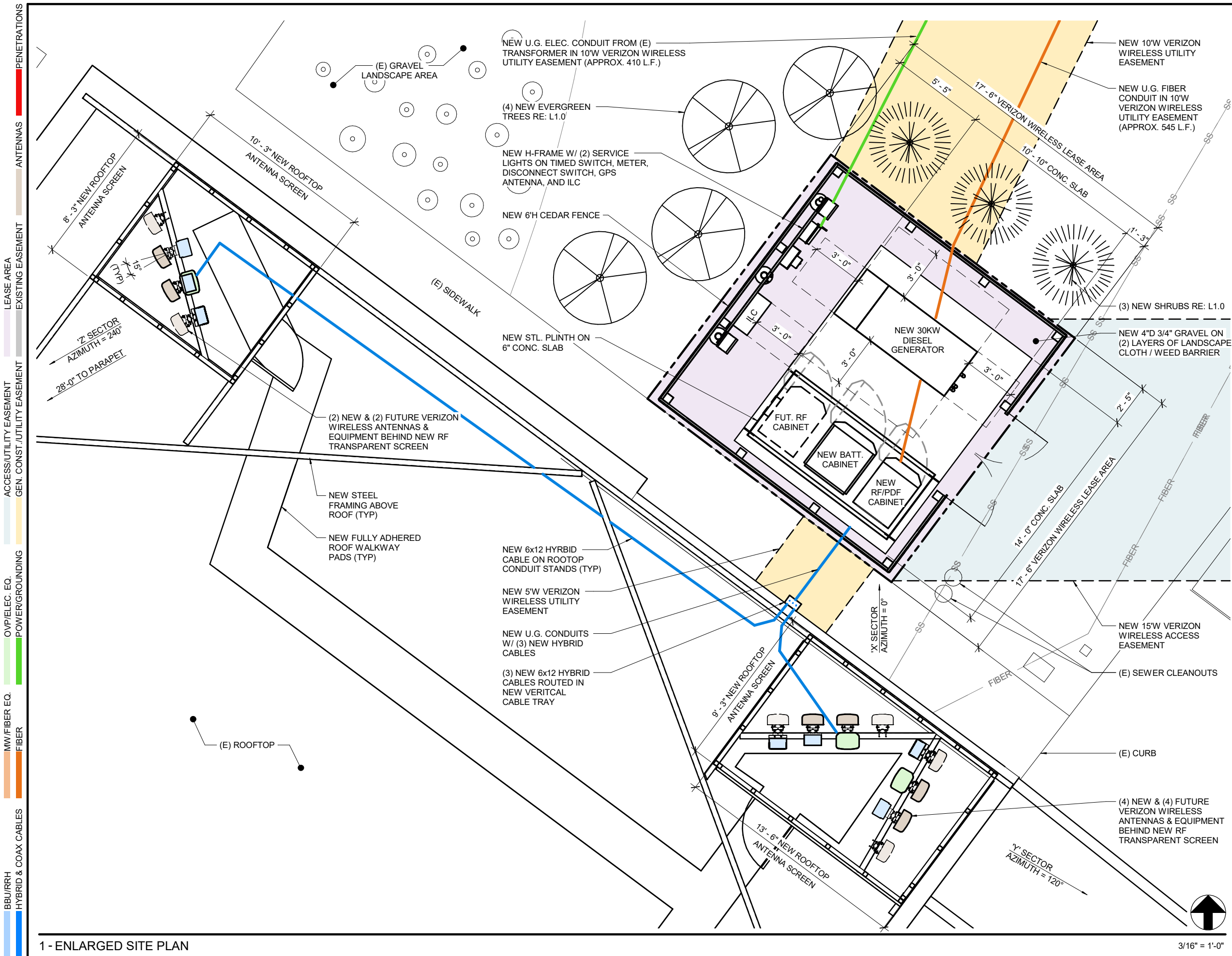
A	11/09/17	CONCEPT	IMR
B	01/11/18	ZD REVIEW	IMR
C	02/19/18	LL COMMENTS	IMR

1st REVIEW KMS 2nd REVIEW ERR

**NOT FOR
CONSTRUCTION**

ENLARGED SITE PLAN

A2.0



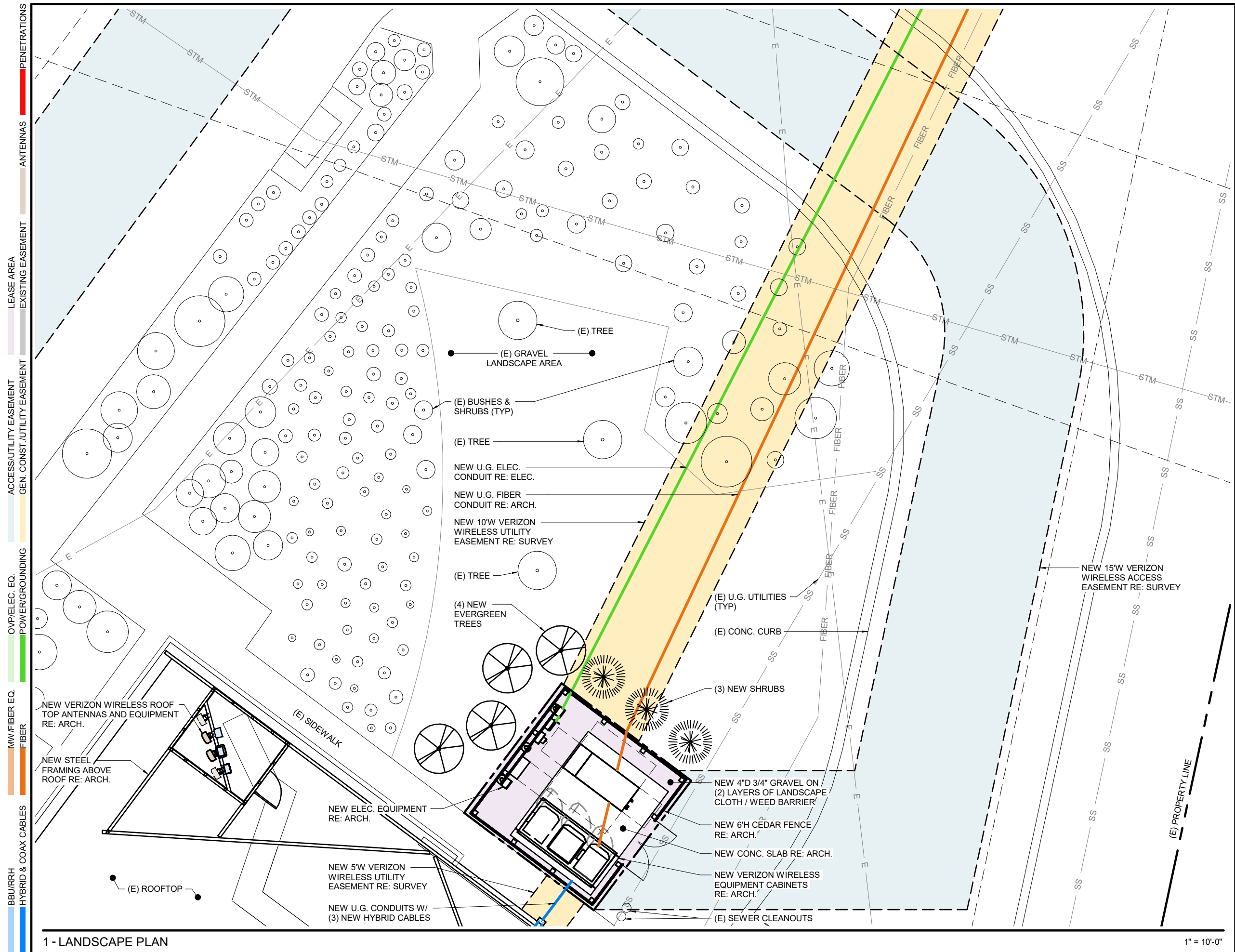
1 - ENLARGED SITE PLAN

3/16" = 1'-0"

A	11/09/17	CONCEPT	IMR
B	01/11/18	ZD REVIEW	IMR
C	02/19/18	LL COMMENTS	IMR

1st REVIEW KMS 2nd REVIEW ERR

**NOT FOR
CONSTRUCTION**



1 - LANDSCAPE PLAN

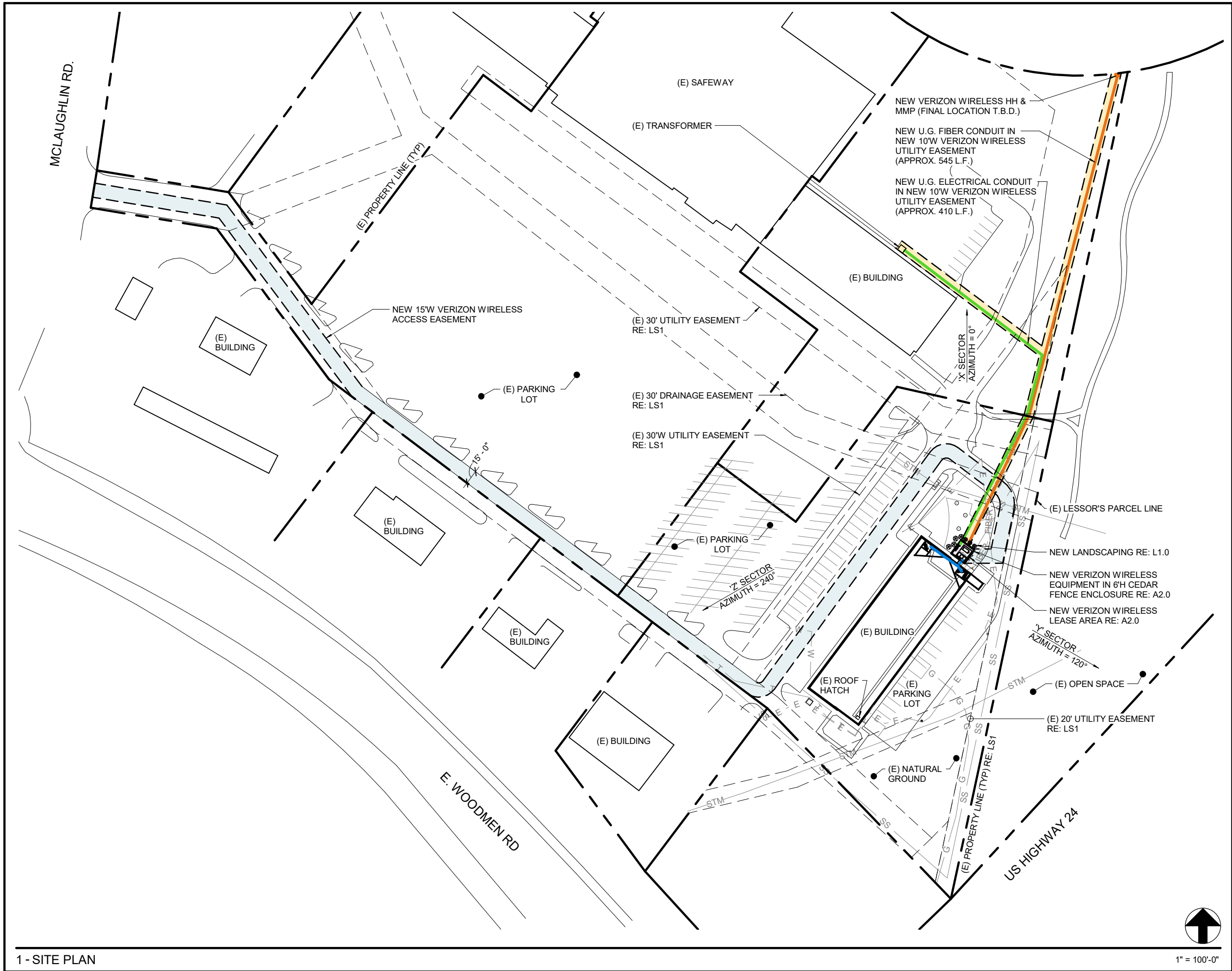
1" = 10'-0"

A	11/09/17	CONCEPT	IMR
B	01/11/18	ZD REVIEW	IMR
C	02/19/18	LL COMMENTS	IMR

1st REVIEW KMS 2nd REVIEW ERR

**NOT FOR
CONSTRUCTION**

- BBU/RRH HYBRID & COAX CABLES
- MW/FIBER EQ. FIBER
- OV/PELEC. EQ. POWER/GROUNDING
- ACCESS/UTILITY EASEMENT GEN. CONST. UTILITY EASEMENT
- LEASE AREA EXISTING EASEMENT
- ANTENNAS
- PENETRATIONS



1 - SITE PLAN



1" = 100'-0"

A	11/09/17	CONCEPT	IMR
B	01/11/18	ZD REVIEW	IMR
C	02/19/18	LL COMMENTS	IMR

1st REVIEW KMS 2nd REVIEW ERR

**CHARLES
STECKLY**
ARCHITECTURE

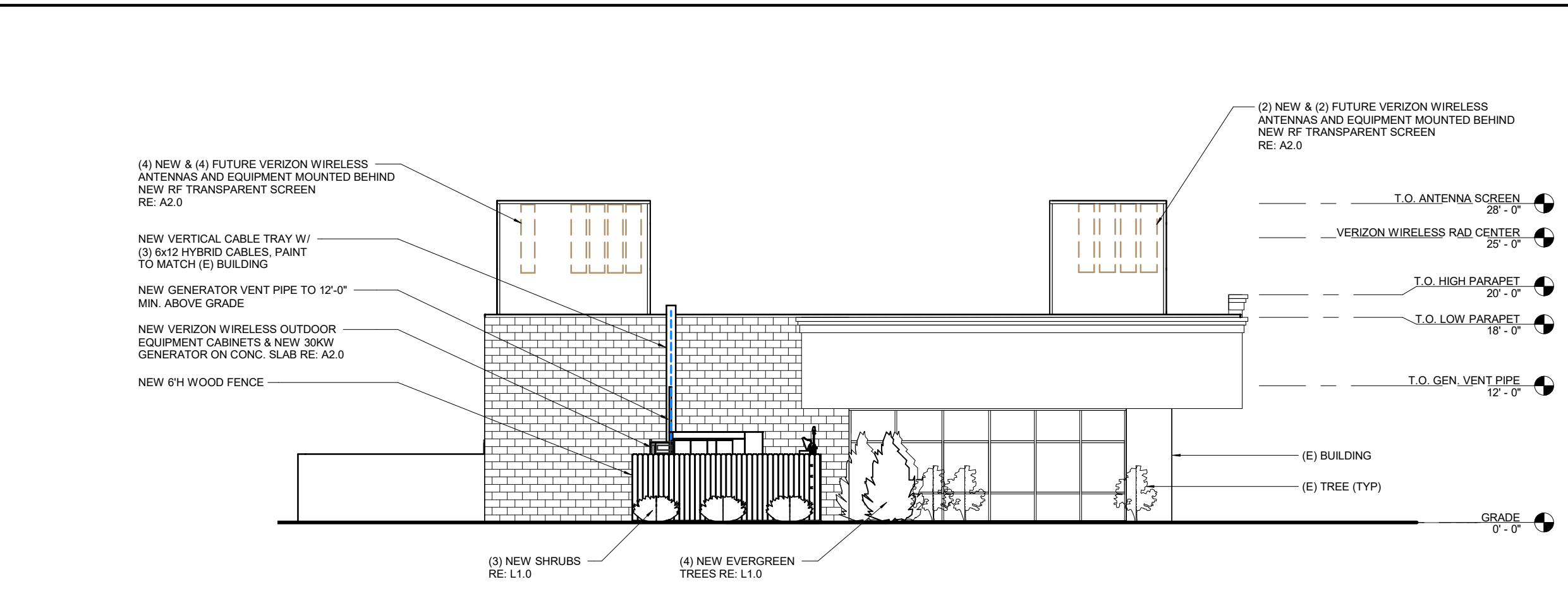
5935 SOUTH ZANG STREET, SUITE 280
LITTLETON, COLORADO 80127
OFFICE: 303.932.9974

**NOT FOR
CONSTRUCTION**

ELEVATIONS

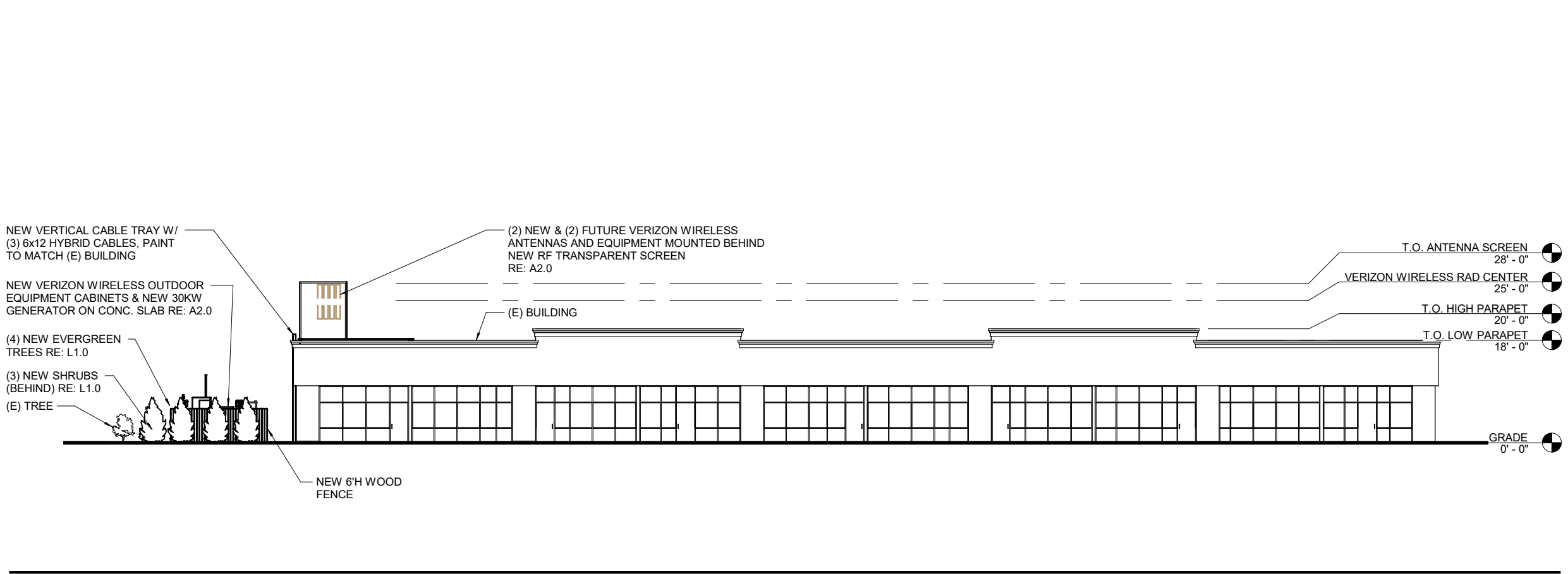
A3.0

PENETRATIONS
 ANTENNAS
 LEASE AREA
 EXISTING EASEMENT
 ACCESS/UTILITY EASEMENT
 GEN. CONST./UTILITY EASEMENT
 O/P/ELEC. EQ.
 POWER/GROUNDING
 MW/FIBER EQ.
 FIBER
 BB/RRH
 HYBRID & COAX CABLES



2 - NORTHEAST ELEVATION

3/32" = 1'-0"



1 - NORTHWEST ELEVATION

3/64" = 1'-0"