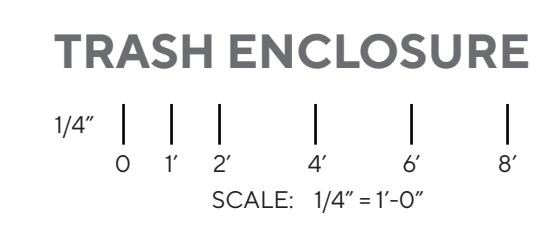
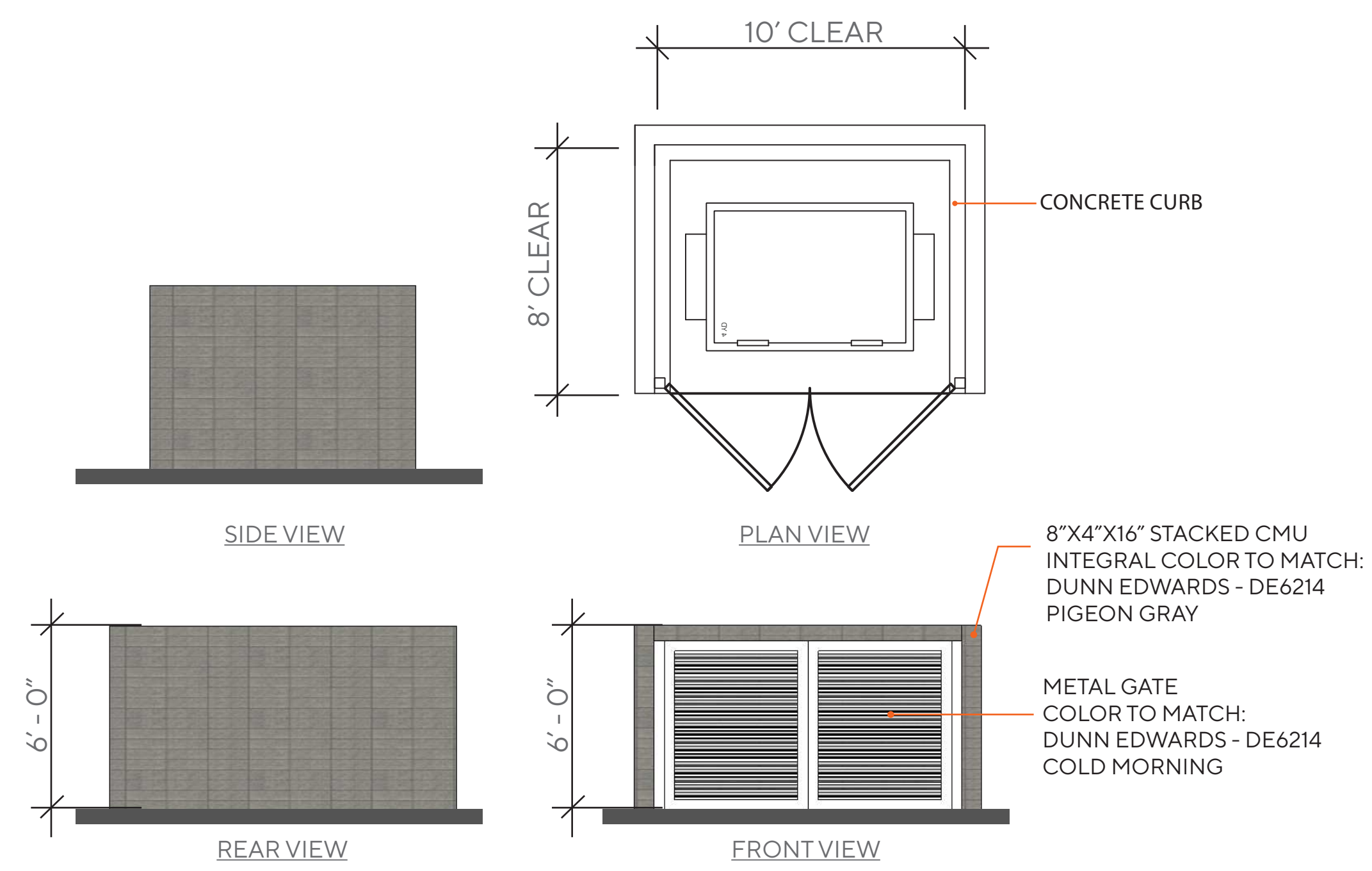
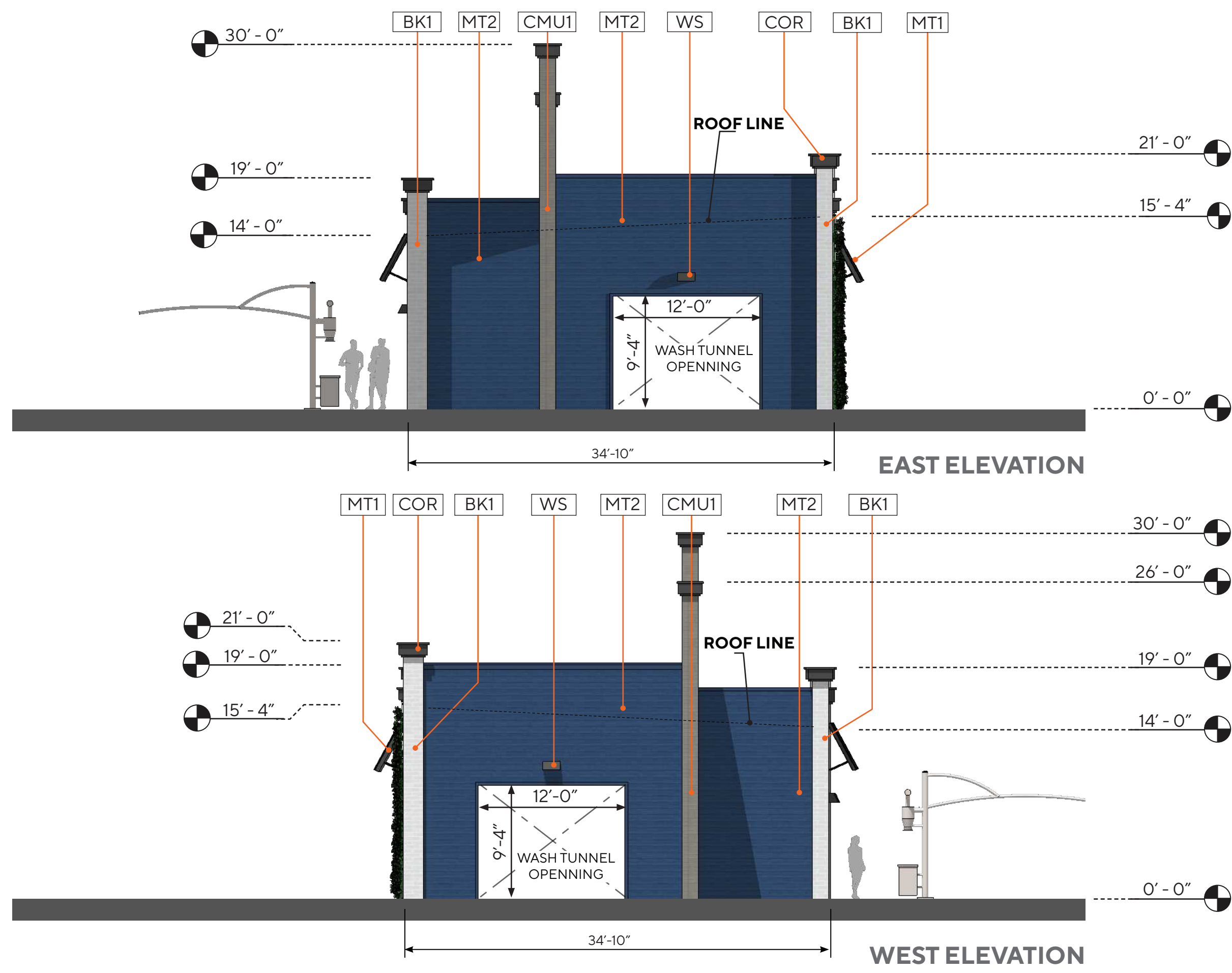




| KEY | DESCRIPTION |
|----------------|---|
| MASONRY | |
| BK-1 | 8" X 4" X 16" - MANUFACTURE: SUPERLITE TYPE: STANDARD BLOCK - PATTERN: RUNNING BOND INTEGRAL COLOR TO MATCH PT-1 |
| CMU-1 | 8" X 4" X 16" - MANUFACTURE: SUPERLITE TYPE: STANDARD BLOCK - PATTERN: STACK BOND INTEGRAL COLOR TO MATCH PT-2 |
| CMU-2 | 10" X 8" X 16" - MANUFACTURE: SUPERLITE TYPE: VERTICAL SINGLE SCORE BLOCK - PATTERN: STACK BOND INTEGRAL COLOR TO MATCH PT-2 |
| METAL | |
| MT-1 | METAL AWNING - COLOR TO MATCH PT-4 |
| MT-2 | ALUMABOARD METAL PANEL, MANU: ROLLFAB, COLOR TO MATCH: REGAL BLUE |
| MISC | |
| COR | CORNICE TRIM - COLOR TO MATCH PT-4 |
| CT | CANOPY TUBE - ARCHES AND COLUMNS COLOR TO MATCH PT-3 |
| HM | HOLLOW METAL DOORS / FRAMES PAINTED COLOR TO MATCH PT-1 |
| WS | ARCHITECTURAL WALL SCONCE LITHONIA LIGHTING - WST LED |
| STUCCO | |
| STU-1 | STUCCO 30/30 FINE TEXTURE OVER STANDARD CMU BLOCK - COLOR TO MATCH PT-3 |
| PAINT | |
| PT-1 | DUNN EDWARDS - COLD MORNING - DE6365 |
| PT-2 | DUNN EDWARDS - PIGEON GRAY - DE6214 |
| PT-3 | DUNN EDWARDS - THICK FOG - DE6058 |
| PT-4 | DUNN EDWARDS - DARK ENGINE - DE6350 |

NOTE:
ALL EXTERIOR SIGNAGE UNDER A SEPARATE PERMIT



MEADOWBROOK & MARKSHEFFEL
COLORADO SPRINGS | CO 80915

EXTERIOR ELEVATIONS

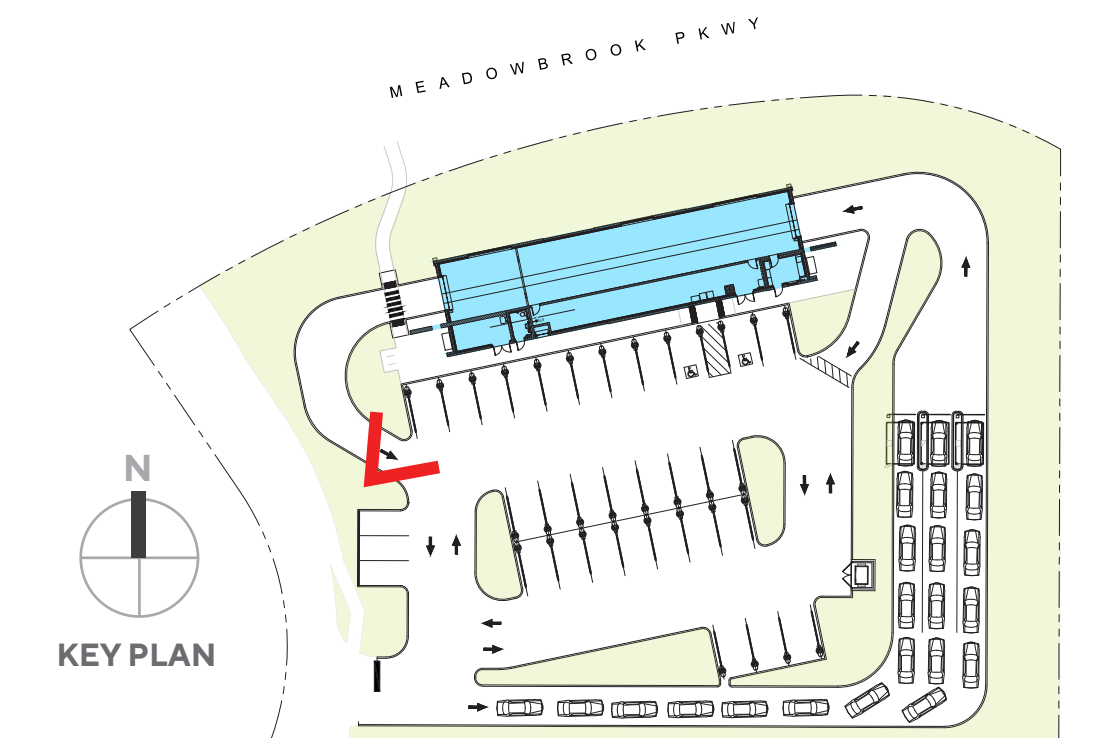


A2.0

Scale: 1/8" = 1'-0"
Job No. 2022-626
Date 2022-02-14



*NOTE: ALL EXTERIOR SIGNAGE UNDER A SEPARATE PERMIT
 LANDSCAPING DEPICTED IS FOR ILLUSTRATIVE PURPOSES ONLY; REFER TO LANDSCAPE PLAN.



MEADOWBROOK & MARKSHEFFEL
 COLORADO SPRINGS | CO 80915

PERSPECTIVE 1

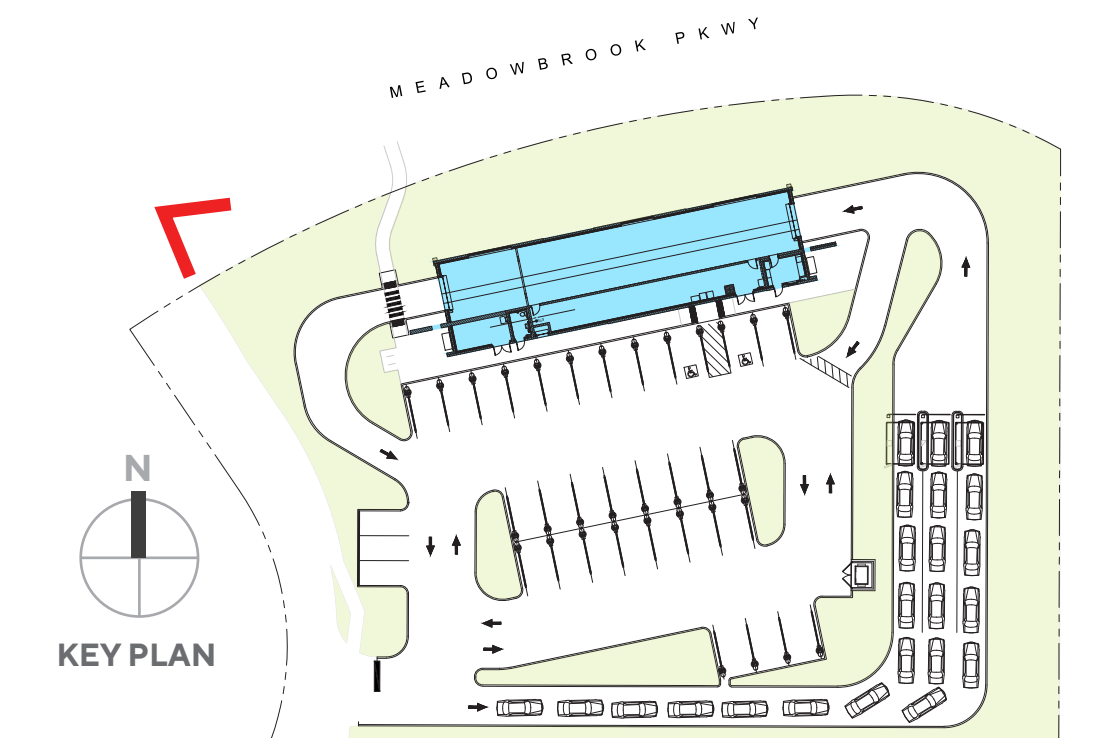


A3.0

Scale
 Job No. 2022-626
 Date 2022-02-14



*NOTE: ALL EXTERIOR SIGNAGE UNDER A SEPARATE PERMIT
 LANDSCAPING DEPICTED IS FOR ILLUSTRATIVE PURPOSES ONLY; REFER TO LANDSCAPE PLAN.



MEADOWBROOK & MARKSHEFFEL
 COLORADO SPRINGS | CO 80915

PERSPECTIVE 2

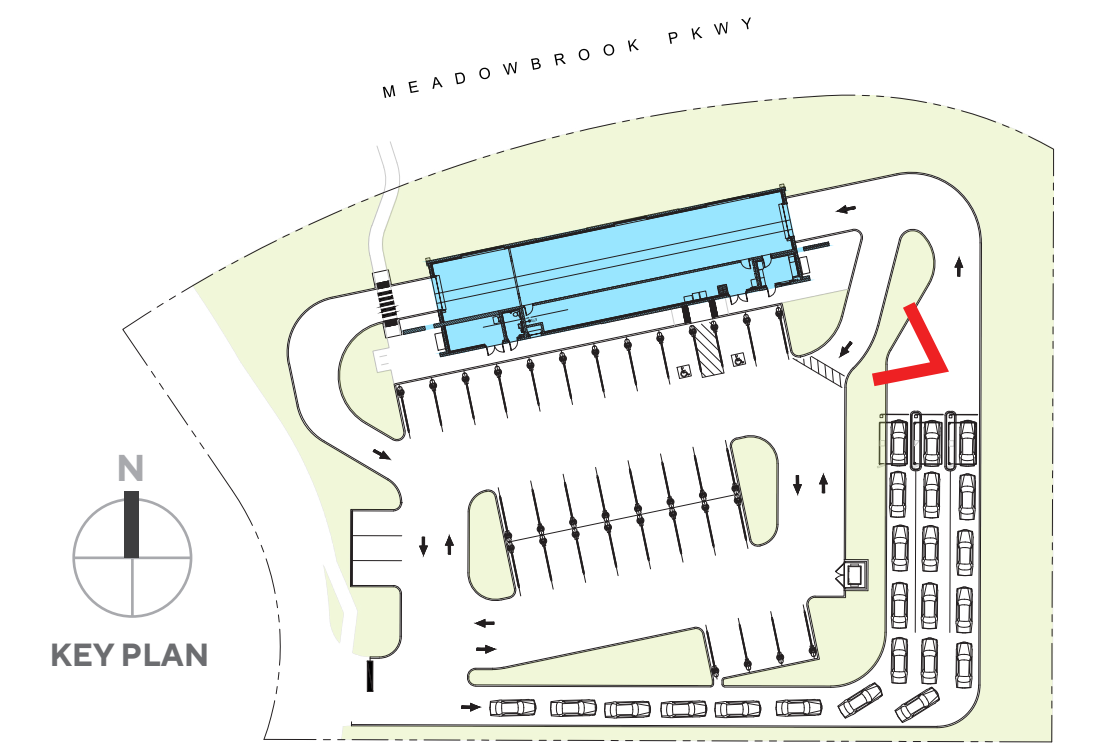


A4.0

Scale
 Job No. 2022-626
 Date 2022-02-14



*NOTE: ALL EXTERIOR SIGNAGE UNDER A SEPARATE PERMIT
 LANDSCAPING DEPICTED IS FOR ILLUSTRATIVE PURPOSES ONLY; REFER TO LANDSCAPE PLAN.



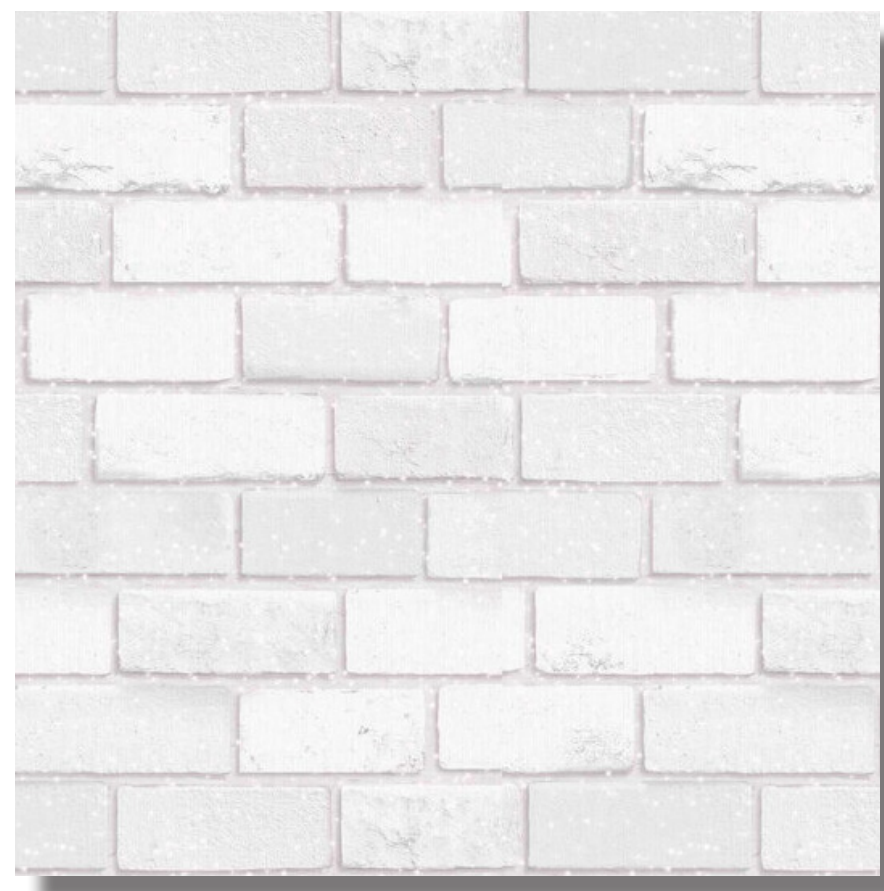
MEADOWBROOK & MARKSHEFFEL
 COLORADO SPRINGS | CO 80915

PERSPECTIVE 3



A5.0

Scale
 Job No. 2022-626
 Date 2022-02-14



BK-1



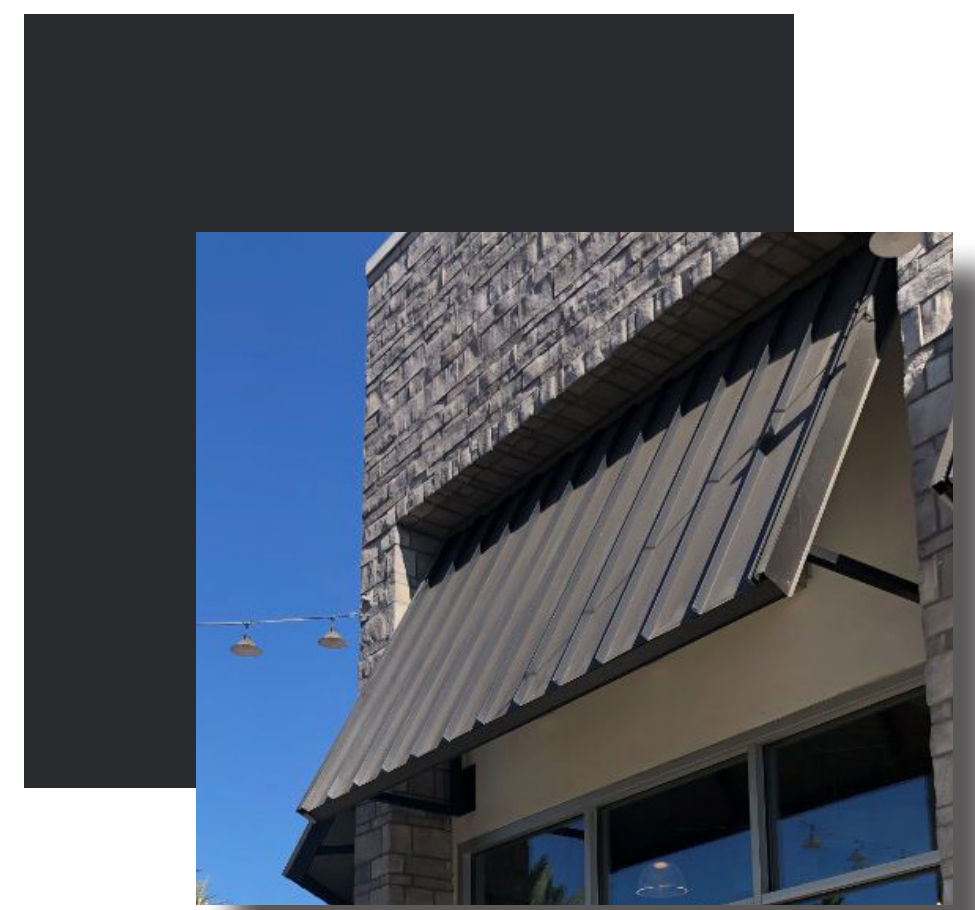
CMU-1



CMU-2



STU-1



MT1



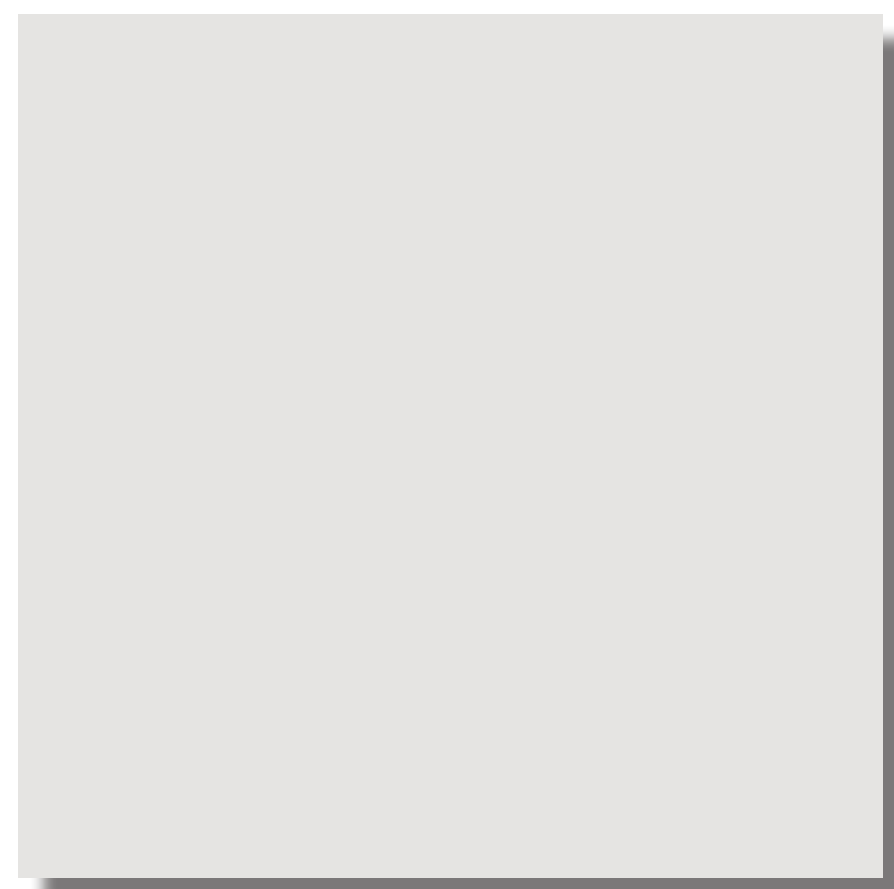
MT2



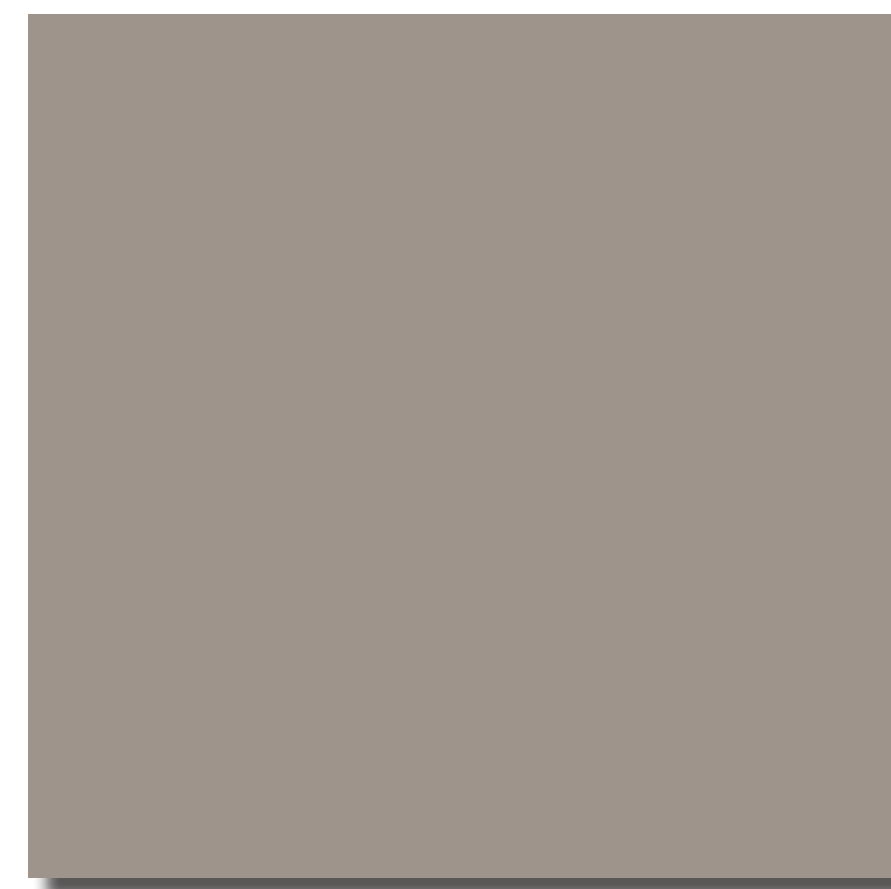
CT



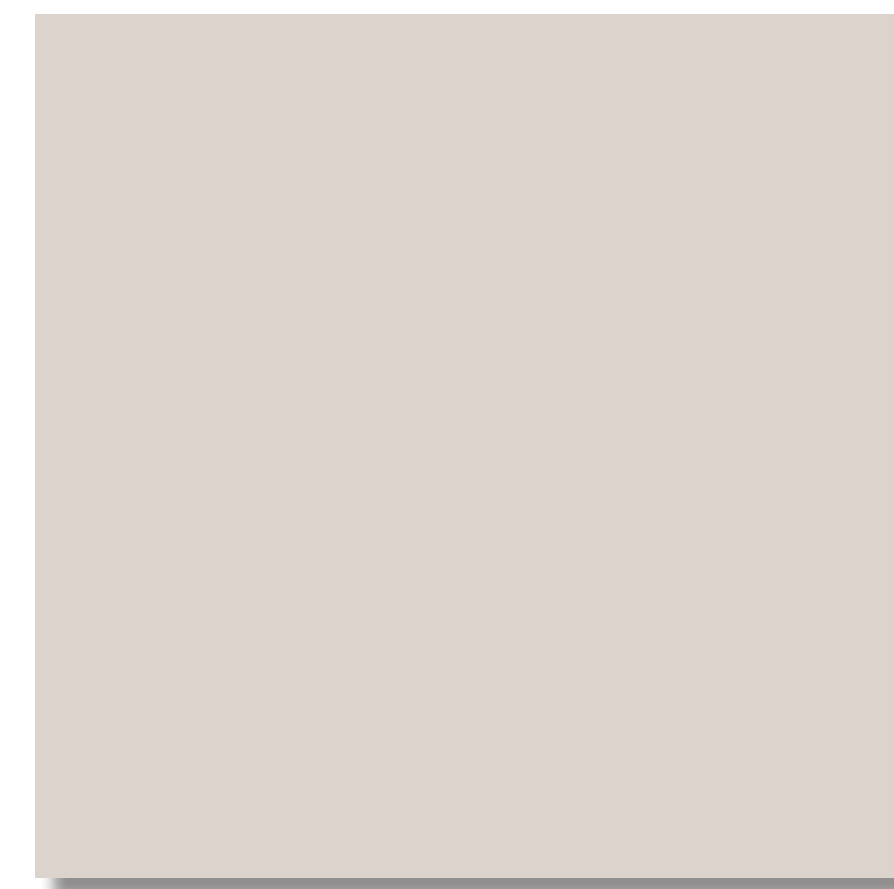
G



PT1



PT2



PT3



PT4

| KEY | DESCRIPTION |
|----------------|---|
| MASONRY | |
| BK-1 | 8" X 4" X 16" - MANUFACTURE: SUPERLITE TYPE: STANDARD BLOCK - PATTERN: RUNNING BOND INTEGRAL COLOR TO MATCH PT-1 |
| CMU-1 | 8" X 4" X 16" - MANUFACTURE: SUPERLITE TYPE: STANDARD BLOCK - PATTERN: STACK BOND INTEGRAL COLOR TO MATCH PT-2 |
| CMU-2 | 10" X 8" X 16" - MANUFACTURE: SUPERLITE TYPE: VERTICAL SINGLE SCORE BLOCK - PATTERN: STACK BOND INTEGRAL COLOR TO MATCH PT-2 |
| METAL | |
| MT-1 | METAL AWNING - COLOR TO MATCH PT-4 |
| MT-2 | ALUMABOARD METAL PANEL, MANU: ROLLFAB, COLOR TO MATCH: REGAL BLUE |
| MISCO | |
| COR | CORNICE TRIM - COLOR TO MATCH PT-4 |
| CT | CANOPY TUBE - ARCHES AND COLUMNS COLOR TO MATCH PT-3 |
| HM | HOLLOW METAL DOORS / FRAMES PAINTED COLOR TO MATCH PT-1 |
| WS | ARCHITECTURAL WALL SCENCE LITHONIA LIGHTING - WST LED |
| STUCCO | |
| STU-1 | STUCCO 30/30 FINE TEXTURE OVER STANDARD CMU BLOCK - COLOR TO MATCH PT-3 |
| PAINT | |
| PT-1 | DUNN EDWARDS - COLD MORNING - DE6365 |
| PT-2 | DUNN EDWARDS - PIGEON GRAY - DE6214 |
| PT-3 | DUNN EDWARDS - THICK FOG - DE6058 |
| PT-4 | DUNN EDWARDS - DARK ENGINE - DE6350 |

NOTE:
ALL EXTERIOR SIGNAGE UNDER A SEPARATE PERMIT



MEADOWBROOK & MARKSHEFFEL
COLORADO SPRINGS | CO 80915

COLORS & MATERIALS



A6.0

Scale
Job No. 2022-626
Date 2022-02-14