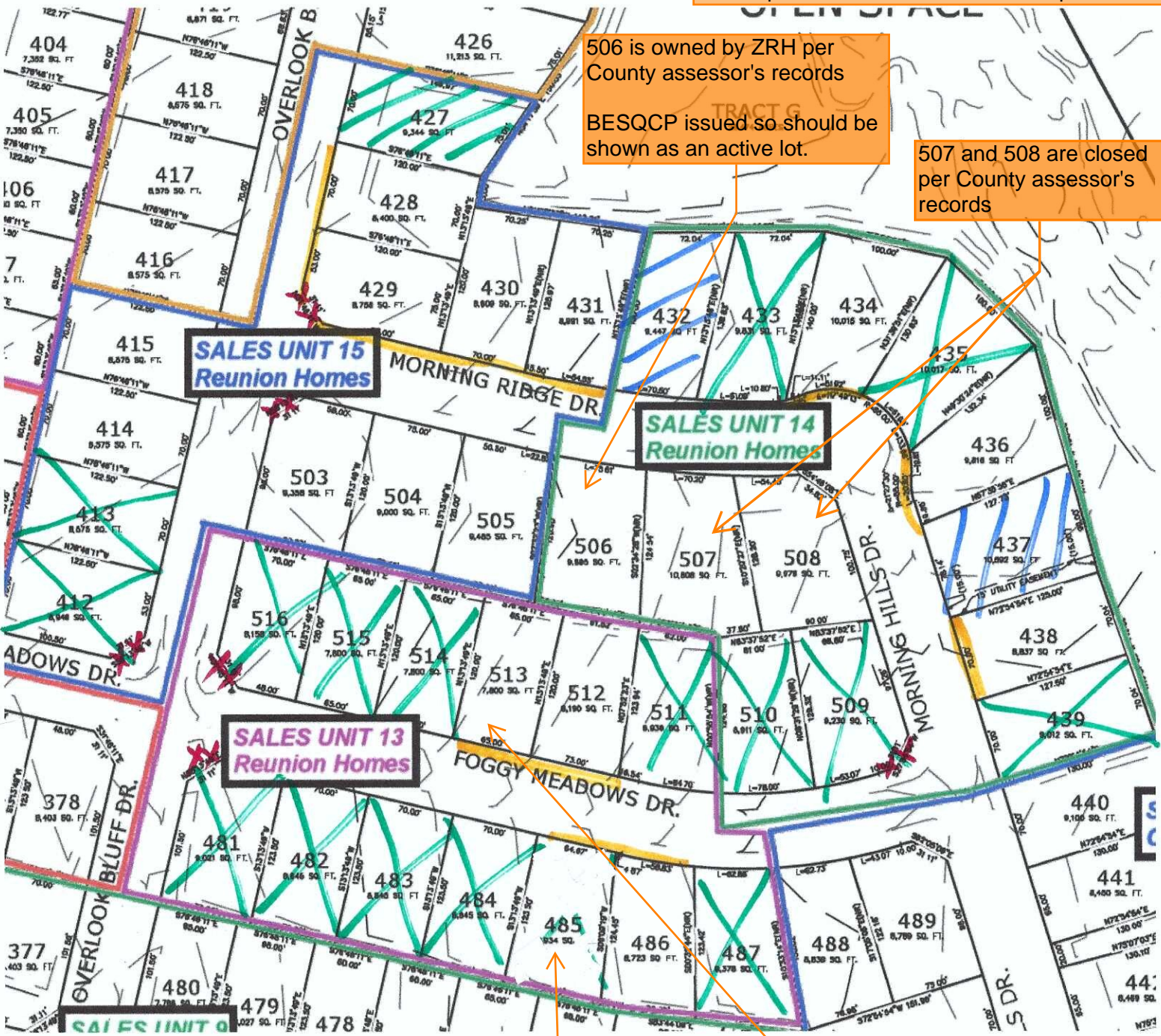


*Rolling Hills 2016
File # 2*

At a minimum, the GEC Plans should clearly show the limits of construction (i.e., the permitted area), specific control measure types, and general direction of flow.

Refer to the example GEC plan sent via email/uploaded to this submission request.



506 is owned by ZRH per County assessor's records
BESQCP issued so should be shown as an active lot.

507 and 508 are closed per County assessor's records

SALES UNIT 15
Reunion Homes

SALES UNIT 14
Reunion Homes

SALES UNIT 13
Reunion Homes

- Inlet protection
- under construction
- closed homes
- BHO's

485 is owned by ZRH per County assessor's records

BESQCP issued so should be shown as an active lot.

513 & 512 are owned by ZRH per County assessor's records so should be shown as an active lot.