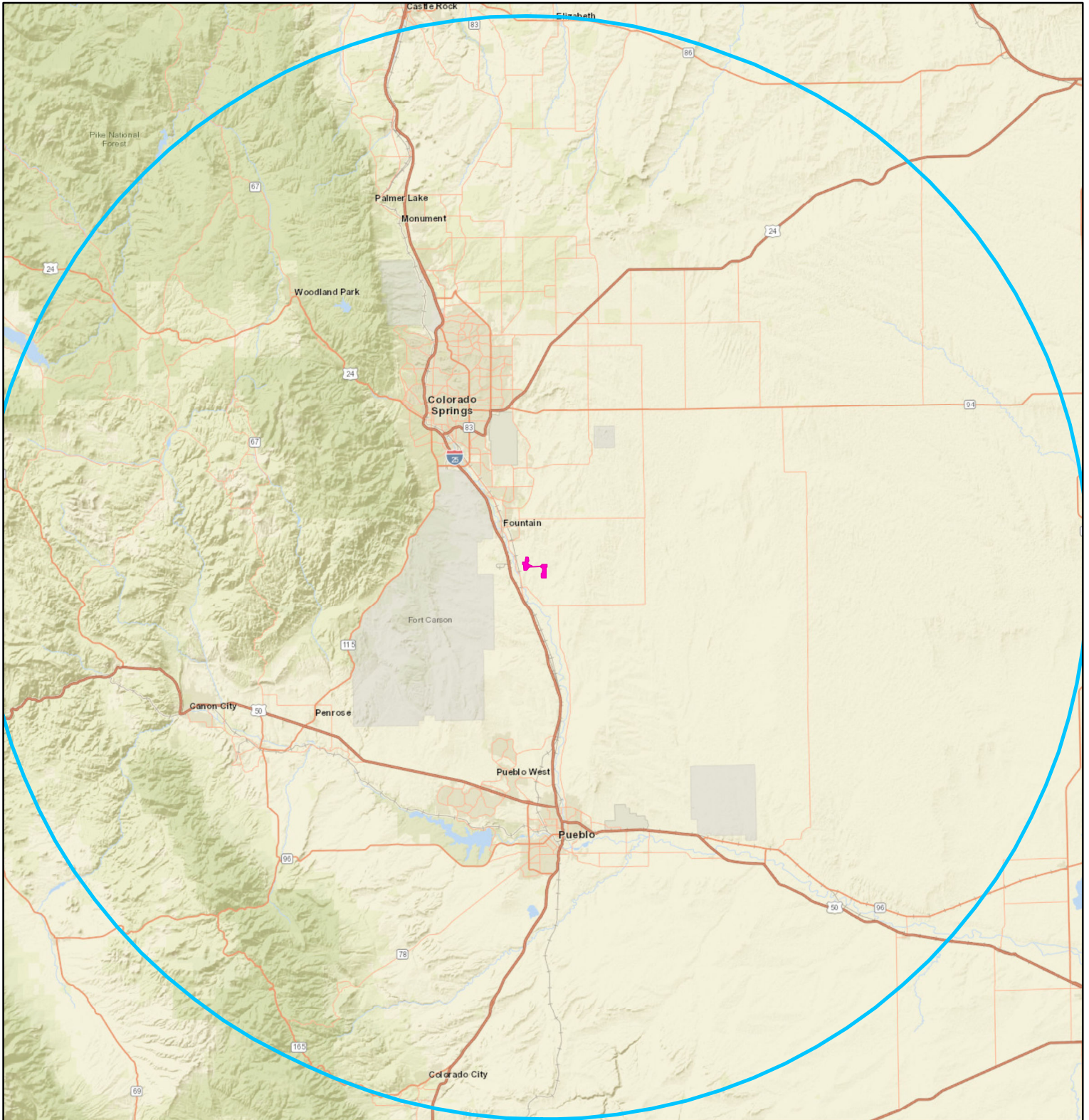






1041 Maps

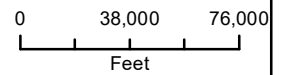
- Vicinity Map
- Transmission Line Map with Clear Spring Ranch location
- Colorado Springs Utilities Service Territory
- Public Lands Map
- Existing Use Map

Vicinity Map
50 Mile buffer

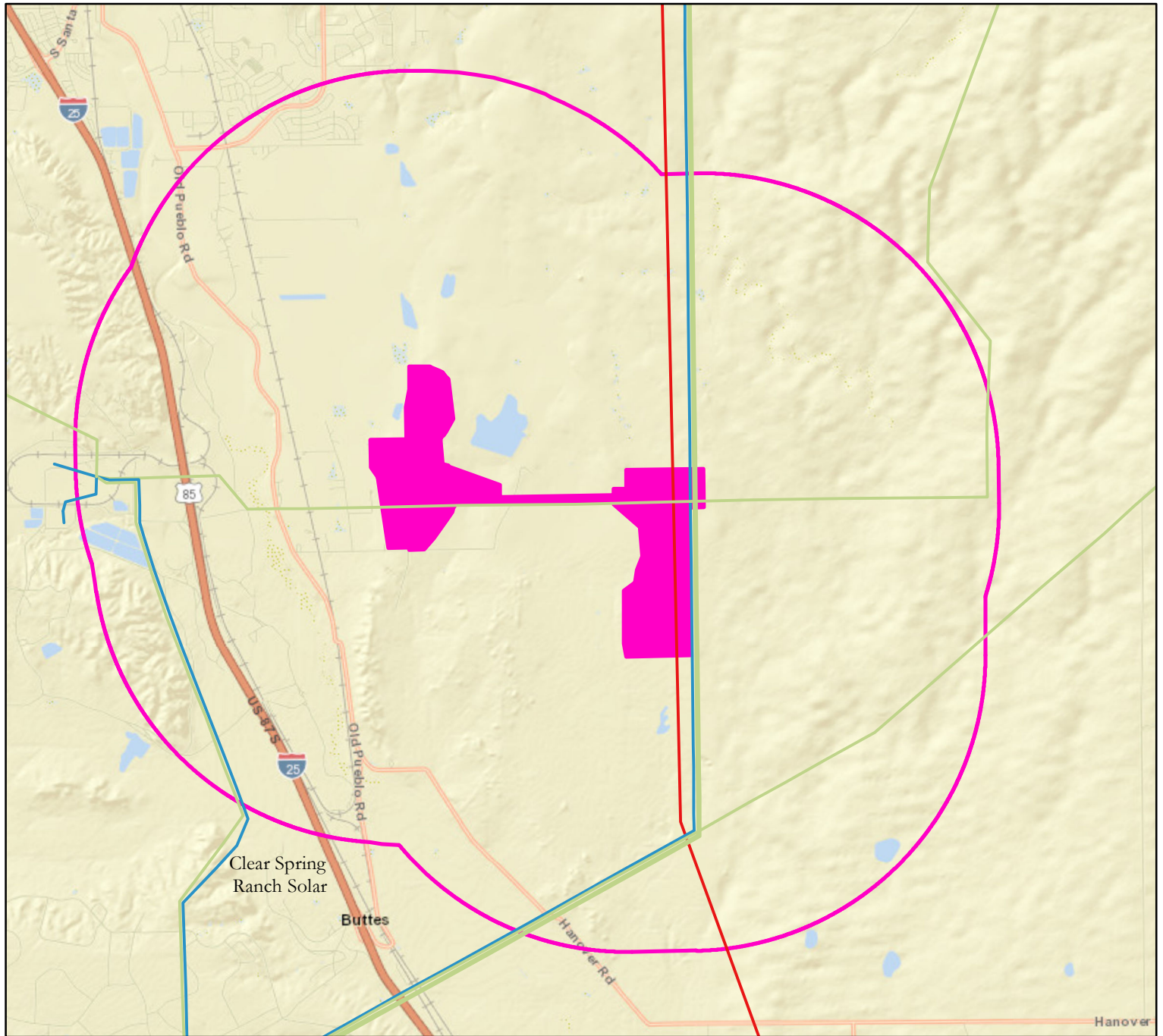


Legend

-  Palmer-Williams Creek WSEO
-  50 Mile Buffer









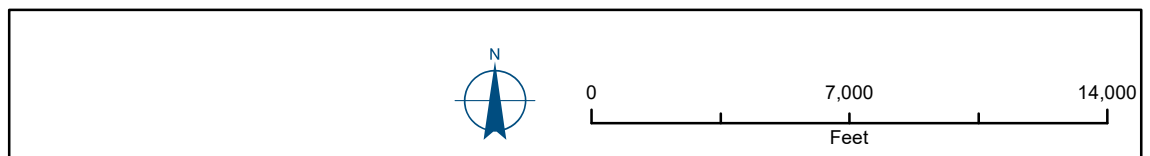
Existing Transmission Lines
Within 2 Mile Buffer &
Location of Clear Spring
Ranch Solar Project (CSU)



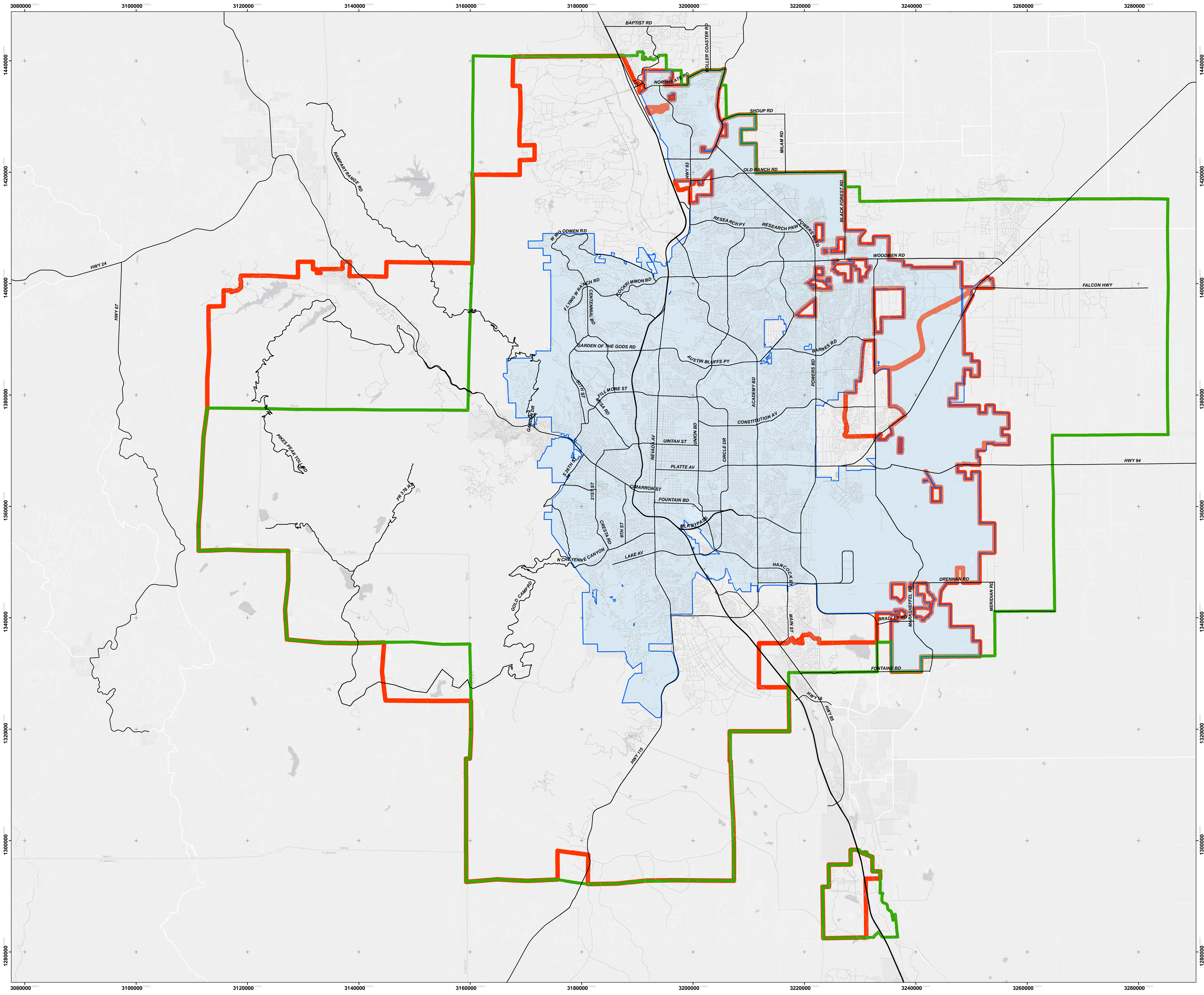
Legend

Line Voltage

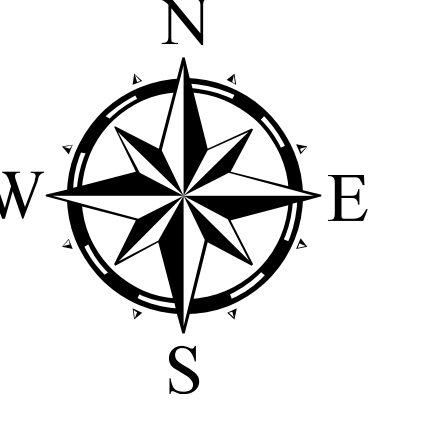
-  0-138
-  139 - 230
-  231 - 320
-  321 - 765
-  2 Mile Buffer
-  Palmer-Williams Creek WSEO



Colorado Springs Utilities - Utility Service Boundaries



Copyright © 2013 City of Colorado Springs on behalf of the Colorado Springs Utilities. All rights reserved. This work, and/or the data contained herein, may not be reproduced, modified, distributed, republished, used to prepare derivative works, publicly displayed or commercially exploited in any manner without the prior express written consent of the City of Colorado Springs and Colorado Springs Utilities. This work was prepared using the best data available at the time of print the creation date and is intended for internal use only. Neither the City of Colorado Springs, the Colorado Springs Utilities, nor any of their employees makes any warranty, express or implied, or assumes any legal liability or responsibility for accuracy, completeness, or usefulness of any data contained herein. The City of Colorado Springs, Colorado Springs Utilities and their employees explicitly disclaim any responsibility for the data contained herein.



1 inch = 5,711 feet

- Major Streets
- Centerlines/Master
- Water / Wastewater Service
- Gas Service
- Electric Service

Narrative

This map depicts the utility service boundaries for Colorado Springs Utilities. It should be noted that CSU may provide some services outside these boundaries (contracted areas are not shown on this map).

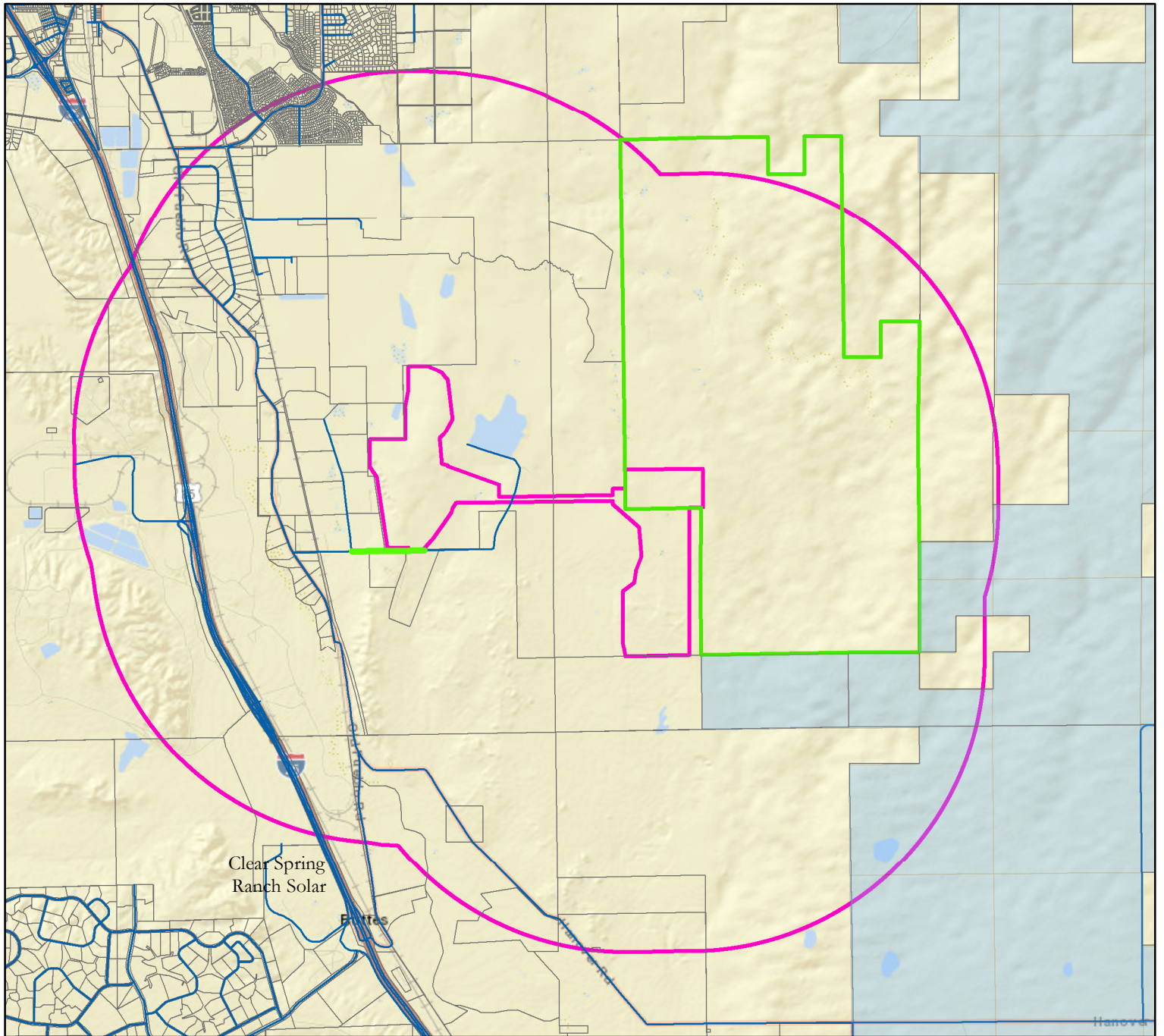
This map was produced by the Utility Data Management team as part of the Asset Management group of Colorado Springs Utilities.

For information about this map or for additional requests, please contact us at 719.668.8779 or 719.668.4405.








Author: Tim Thomas
Date: 12/12/2013

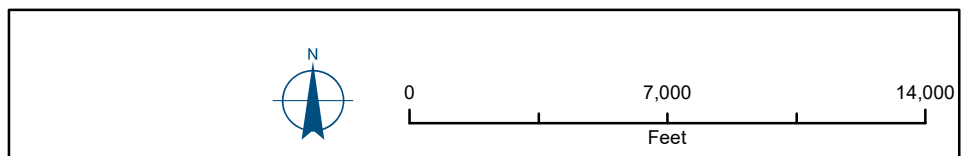


**Affected Public Land
Boundaries (County and City)
Identified in Green**



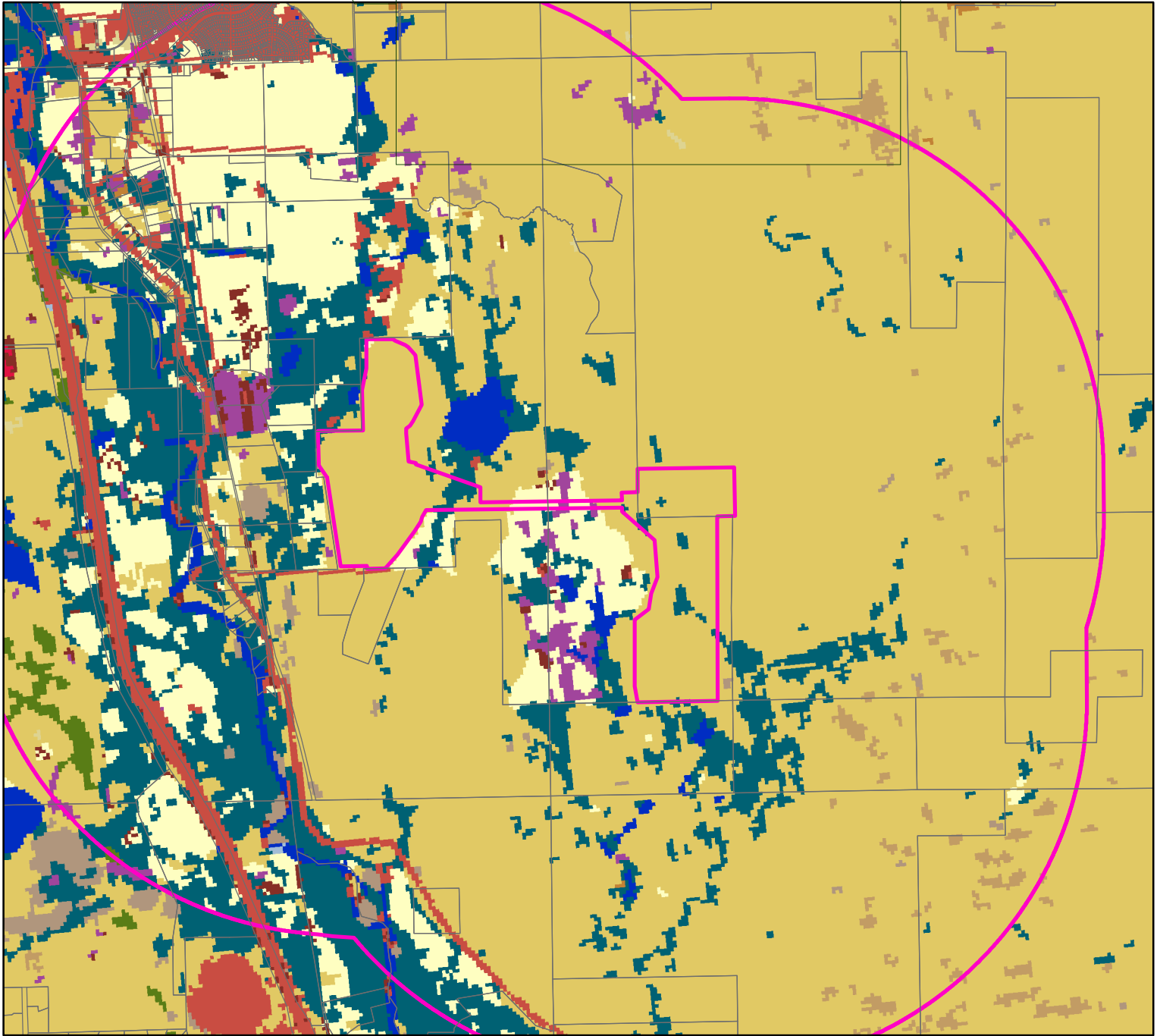
Legend

-  CO State Land Board
-  City of Colorado Springs
-  El Paso County Road
-  Road Centerlines
-  El Paso County Parcel lines
-  2 Mile Buffer
-  Palmer-Williams Creek WSEO



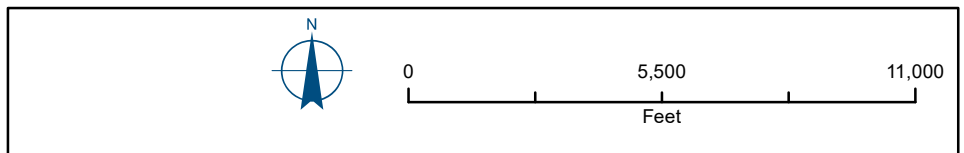
Site Map - Existing Use
See WSEO Map for
Properties and Easements

These are not a 1041 map- they are specific maps that need there own appendix- correct throughout applications, Provide a 1041 map (sheet 6 of wse-o is prime for labeling 1041 map) and uploading.



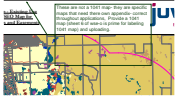
Legend

- | | | | | |
|--|--|---|--|--|
| El Paso County Parcel lines | 326 - Western Great Plains Foothill and Piedmont Grassland | 485 - Inter-Mountain Basins Mixed Salt Desert Scrub | 561 - Introduced Upland Vegetation - Shrub | 580 - Quarries, Mines, Gravel Pits and Oil Wells |
| 2 Mile Buffer | 329 - Western Great Plains Sandhill Steppe | 498 - Inter-Mountain Basins Semi-Desert Shrub Steppe | 562 - Introduced Riparian and Wetland Vegetation | 581 - Developed, Open Space |
| Palmer-Williams Creek WSEO | 331 - Western Great Plains Shortgrass Prairie | 556 - Cultivated Cropland | 572 - Recently burned shrubland | 582 - Developed, Low Intensity |
| 189 - Southern Rocky Mountain Pinyon-Juniper Woodland | 457 - Inter-Mountain Basins Greasewood Flat | 557 - Pasture/Hay | 574 - Disturbed/Successional - Grass/Forb Regeneration | 583 - Developed, Medium Intensity |
| 192 - Western Great Plains Floodplain | 458 - Inter-Mountain Basins Playa | 558 - Introduced Upland Vegetation - Annual Grassland | 575 - Disturbed/Successional - Shrub Regeneration | 584 - Developed, High Intensity |
| 194 - Western Great Plains Riparian Woodland and Shrubland | 484 - Inter-Mountain Basins Mat Saltbush Shrubland | 559 - Introduced Upland Vegetation - Perennial Grassland and Forbland | 579 - Open Water (Fresh) | |



Markup Summary

dsdparsons (1)



Subject: Callout
Page Label: 6
Author: dsdparsons
Date: 1/9/2019 11:18:36 AM
Color: ■

These are not a 1041 map- they are specific maps that need there own appendix- correct throughout applications, Provide a 1041 map (sheet 6 of wse-o is prime for labeling 1041 map) and uploading.