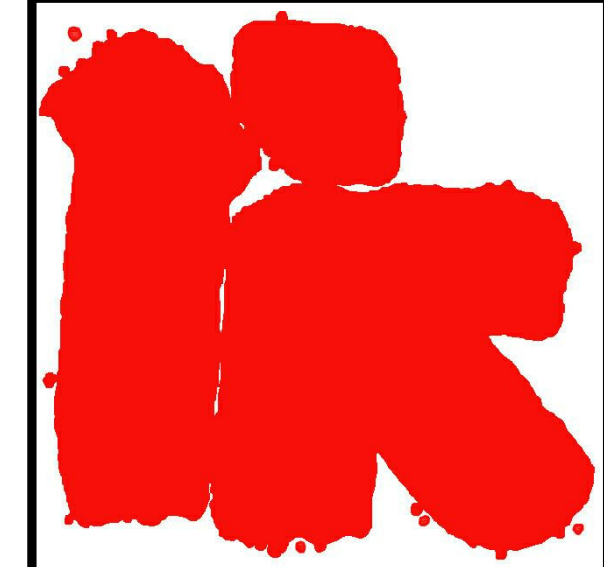


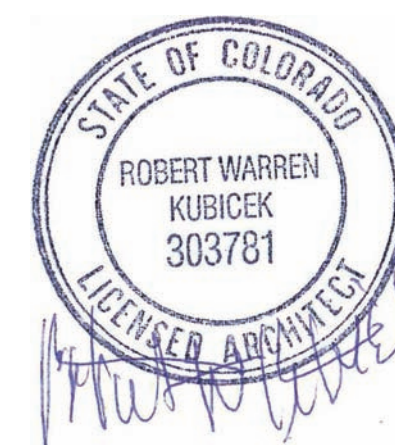
1 OVERALL FIRST FLOOR PLAN  
A1.3 1/16" = 1'-0"

LIBERTY TREE  
ACADEMY



ROBERT KUBICEK  
Architects And Associates, Inc.

2233 East Thomas Road  
Phoenix, Arizona 85016  
(602) 955-3900 RKAA.com



carhuff+cueva  
architects, llc

3149 e prince rd #151  
tucson, arizona 85716  
phone 520.577.4560  
www.cca-az.com  
© carhuff + cueva architects, llc 2015 all rights reserved

NEW SCHOOL CAMPUS FOR:

LIBERTY TREE ACADEMY

8579 EASTONVILLE RD,  
PEYTON, CO 80831

CONSTRUCTION DOCUMENTS

REVISION	DATE	DESCRIPTION	BY

PROJECT NO. P18-8579

DATE MAY 8, 2018

SCALE 1/16" = 1'-0" DRAWN BY PD

DRAWING TITLE OVERALL FLOOR PLAN

DRAWING NUMBER A1.3

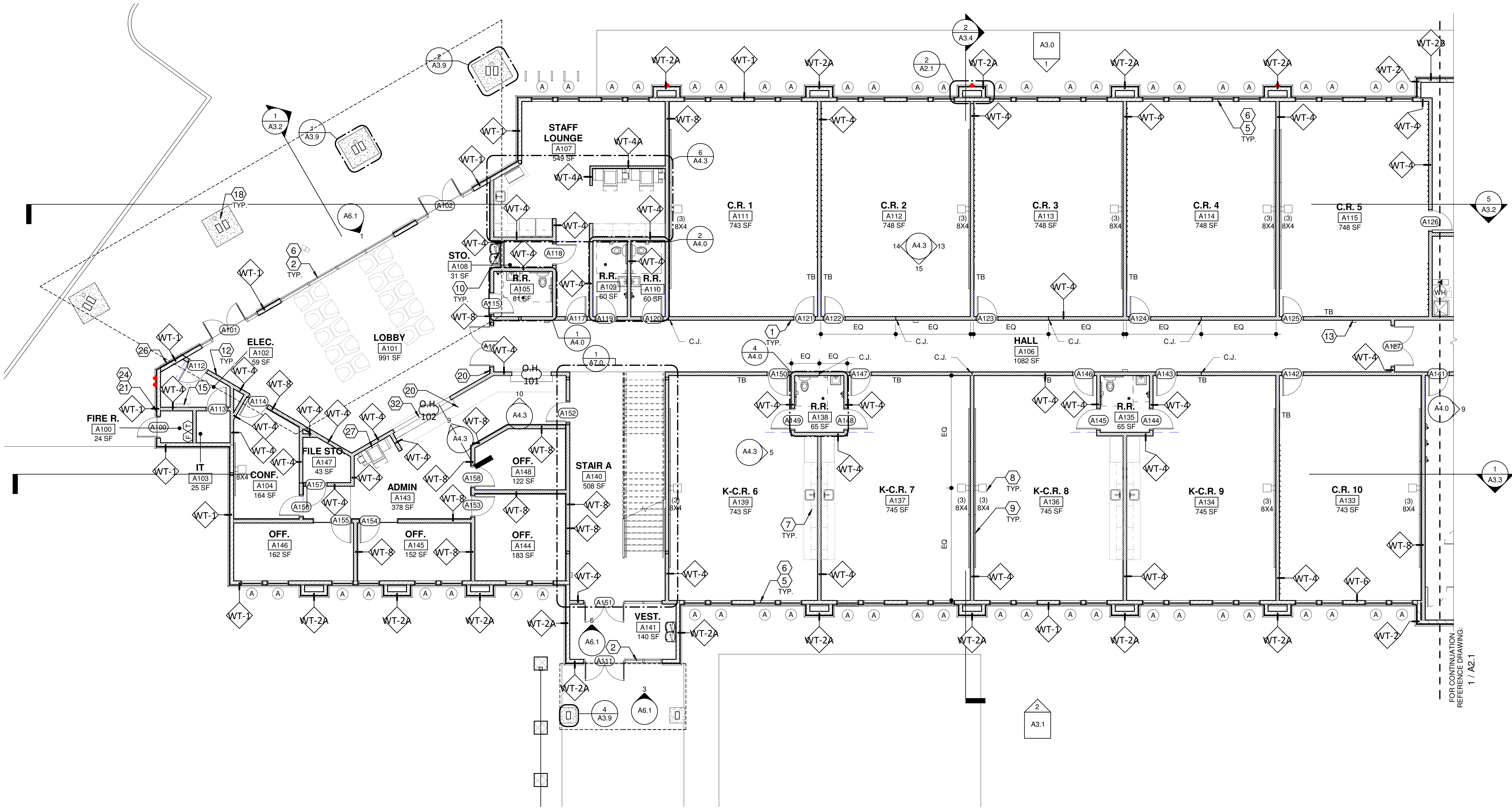


GENERAL NOTES:

1. GENERAL CONTRACTOR IS RESPONSIBLE FOR THE SUPPLY AND COORDINATION OF INSTALLATION FOR ALL BUILDING MATERIAL.
2. PROVIDE BACKING AT ALL DOOR BUMPERS.
3. PROVIDE DRYWALL CONTROL JOINTS FULL HEIGHT NO MORE THAN 30 FEET APART PER DRYWALL MFR. RECOMMENDATIONS.
4. ALL DOORS IN FRAMED WALLS SHALL BE 4" FROM ADJACENT WALL U.N.O.
5. PROVIDE VINYL CORNER GUARDS AT ALL HALLWAY CORNERS. MECHANICALLY FASTENED. REFERENCE FINISH PLANS.
6. KEYNOTES NOT REFERENCED ON THIS SHEET MAY BE REFERENCED ON ANOTHER SHEET.
7. OWNER TO APPROVE ALL PAINT COLORS, FLOORING, FONTS, GRAPHICS AND FINISHES.
8. PULL DOWN SHADES AT ALL EXTERIOR & INTERIOR WINDOWS.
9. PROVIDE WALL MOUNTED SIGNAGE WITH INSERTS OUTSIDE EACH CLASSROOM PER DETAIL. VERIFY WITH OWNER BEFORE ORDERING.
10. PROVIDE BAG HOOKS TO ALL CLASSROOMS, EXCEPT K-CLASSROOMS WITH CUBBIES PER DETAIL 11/A4.3. COORDINATE LOCATIONS WITH OWNER.

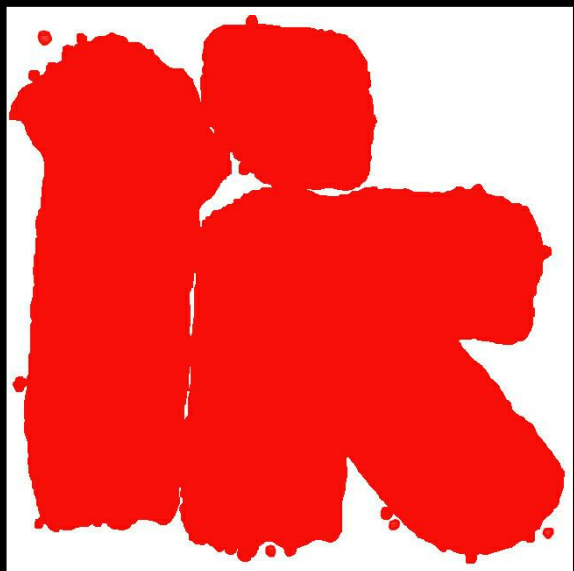
FLOOR PLAN KEYNOTES:

1. WOOD STUD PARTITION PER WALL SCHEDULE.
2. STOREFRONT SYSTEM WITH, CLR ANODIZED ALUMINUM MULLIONS AND DOUBLE PANEL INSULATED CLEAR GLASS. 2" x 10" DEEP MULLIONS AT EXTERIOR & 2" x 4 1/2" DEEP MULLIONS AT INTERIOR.
3. KITCHEN EQUIPMENT AND FIXTURES PER PLUMBING AND ELECTRICAL SHEETS.
4. LAMINATE CMU WALL WITH 5/8" GYP. BD. TEXTURED AND PAINTED.
5. ANODIZED ALUMINUM WINDOW PER SCHEDULE.
6. INTERIOR ROLLER SHADES AT ALL WINDOWS AND STOREFRONT - TYP.
7. MILLWORK PER DETAILS AND FURNITURE BY G.C.
8. WALL MOUNTED PROJECTOR INSTALLED PER MFG. SPECIFICATIONS.
9. 8'-0" OR 6'-0" WIDE X 4'-0" HIGH WHITE BOARD MOUNTED AT +3'-0" ABOVE FINISH FLOOR - TYP. PER LABELS.
10. WALL MOUNTED HI-LOW DRINKING FOUNTAIN, SEE PLUMBING DRAWINGS. PROVIDE CERAMIC TILE AND 5'-0" WAINSCOT.
11. ELECTRIC HOT WATER HEATER, SEE PLUMBING DRAWINGS FOR EXACT SIZE AND REQUIREMENTS - TYP
12. PROVIDE FIRE ALARM CONTROL PANEL (FACP) BY G.C. AND BUILDING SECURITY KEYPAD BY OWNER.
13. 2A:10BC FIRE EXTINGUISHER IN SEMI-RECESSED FIRE EXTINGUISHER CABINET - TYPICAL (SEE SPECIFICATIONS). PROVIDE MINIMUM OF (1) PER 3000 SF OF BUILDING AREA. MAX TRAVEL DISTANCE TO AN FE SHALL NOT EXCEED 75'.
14. ROOF ACCESS LADDER. PROVIDE LOCKABLE ROOF SCUTTLE.
15. ELECTRIC PANELS. PROVIDE CLEAR SPACE IN FRONT OF PANELS PER N.E.C. CODE.
16. EXTERIOR LIGHTING CONTROLS PER ELECTRICAL DRAWINGS.
17. LANDSCAPE TIMER CONTROL PER LANDSCAPE DRAWINGS.
18. ACCENT UP LIGHTING PER ELECTRICAL DRAWINGS.
19. SCHOOL LOGO PAINTED OR INTEGRAL IN FLOORING.
20. PROVIDE JUNCTION BOX FOR POWERED LATCH SYSTEM.
21. FIRE RISER ROOM AND FACP SIGN PER LOCAL FIRE RESCUE.
22. SIGN POSING MAXIMUM OCCUPANCY PER LIFE SAFETY PLAN.
23. PROVIDE ROOF ACCESS SIGN.
24. FDC LOCATION. PROVIDE SIGNAGE PER LOCAL FIRE RESCUE.
25. ELECTRICAL SERVICE ENTRANCE PER ELECTRIC PLANS.
26. PROVIDE FLUSH-MOUNTED KNOX BOX, MODEL NO. 3200 SERIES @ +6'-0" A.F.F. ORDER AND INSTALL PER FIRE DISTRICT REQUIREMENTS.
27. COPY MACHINE.
28. HYDRAULIC ELEVATOR LIKE THYSSEN KRUPP ENDURA HMRL PER SPECIFICATIONS, OR EQ.
29. 1-1/2" DIAMETER STEEL PIPE HANDRAIL - PAINTED. MOUNT RAILING AT +2'-10" ABOVE STAIR - TYP.
30. WHEEL CHAIR LIFT SHALL CONFORM TO ANSI 410 AND FIGURE 410.2.1 TYP. CONTROLS TO COMPLY WITH ANSI 410 SECTION 309. MINIMUM CLEAR FLOOR WIDTH OF 36" AND DEPTH OF 48"
31. RETRACTABLE GYM DIVIDER.
32. ROLL UP COUNTER SHUTTER



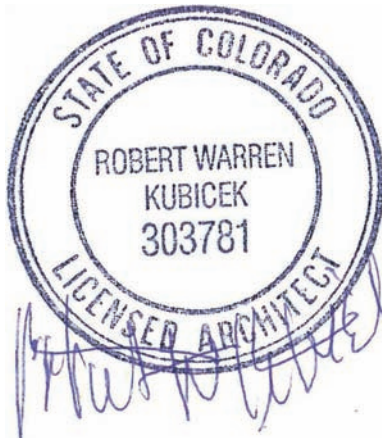
1 PROPOSED FLOOR PLAN LEVEL 1  
A2.0 1/8" = 1'-0"

LIBERTY TREE  
ACADEMY



ROBERT WARREN  
KUBICEK  
Architects And Associates, Inc.

2233 East Thomas Road  
Phoenix, Arizona 85016  
(602) 955-3900 RKAA.com



carhuff+cueva  
architects, llc

3149 e prince rd #151  
tucson, arizona 85716  
phone 520.577.4560  
www.cca-az.com  
© carhuff + cueva architects, llc 2015 all rights reserved

NEW SCHOOL CAMPUS FOR:

LIBERTY TREE ACADEMY

8579 EASTONVILLE RD,  
PEYTON, CO 80831

CONSTRUCTION DOCUMENTS

REVISION	DATE	DESCRIPTION	BY

PROJECT NO. P18-8579

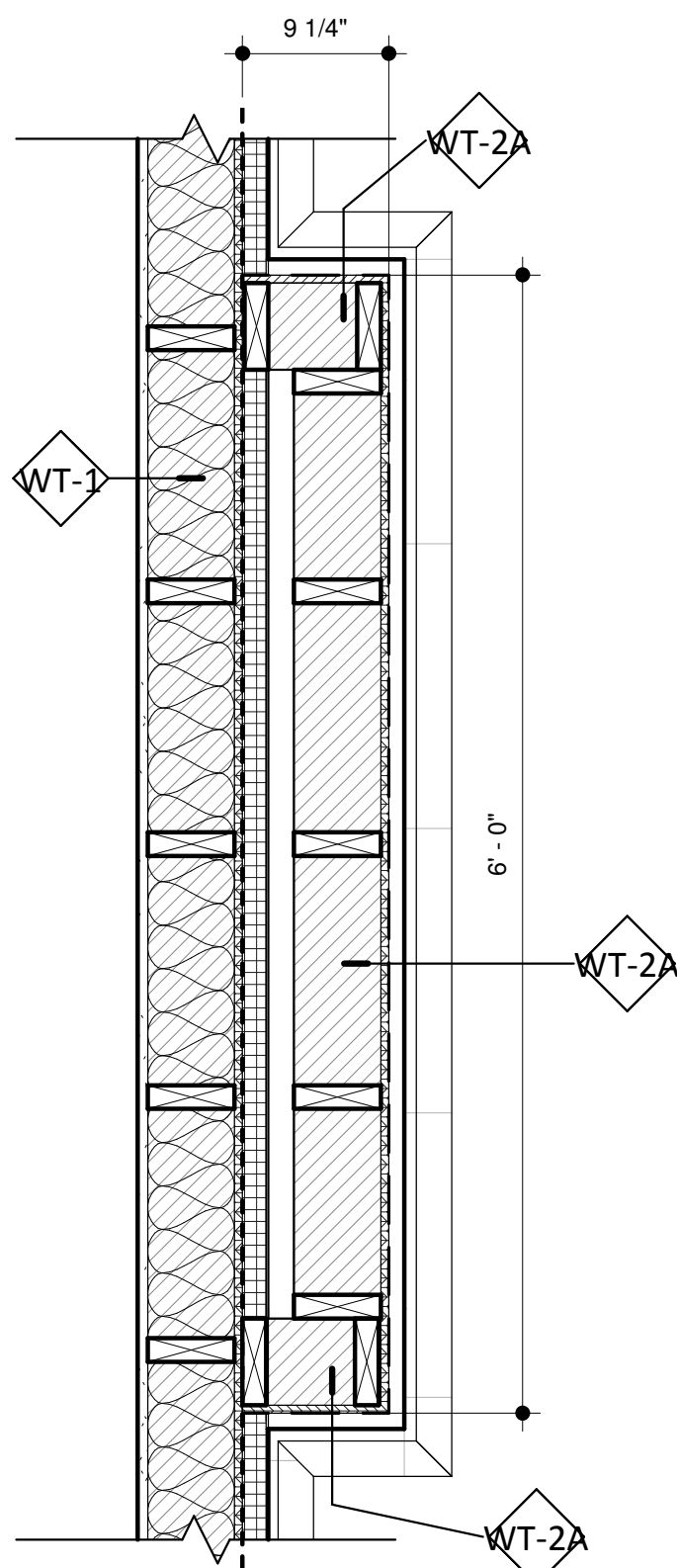
DATE MAY 8, 2018

SCALE As indicated DRAWN BY PD

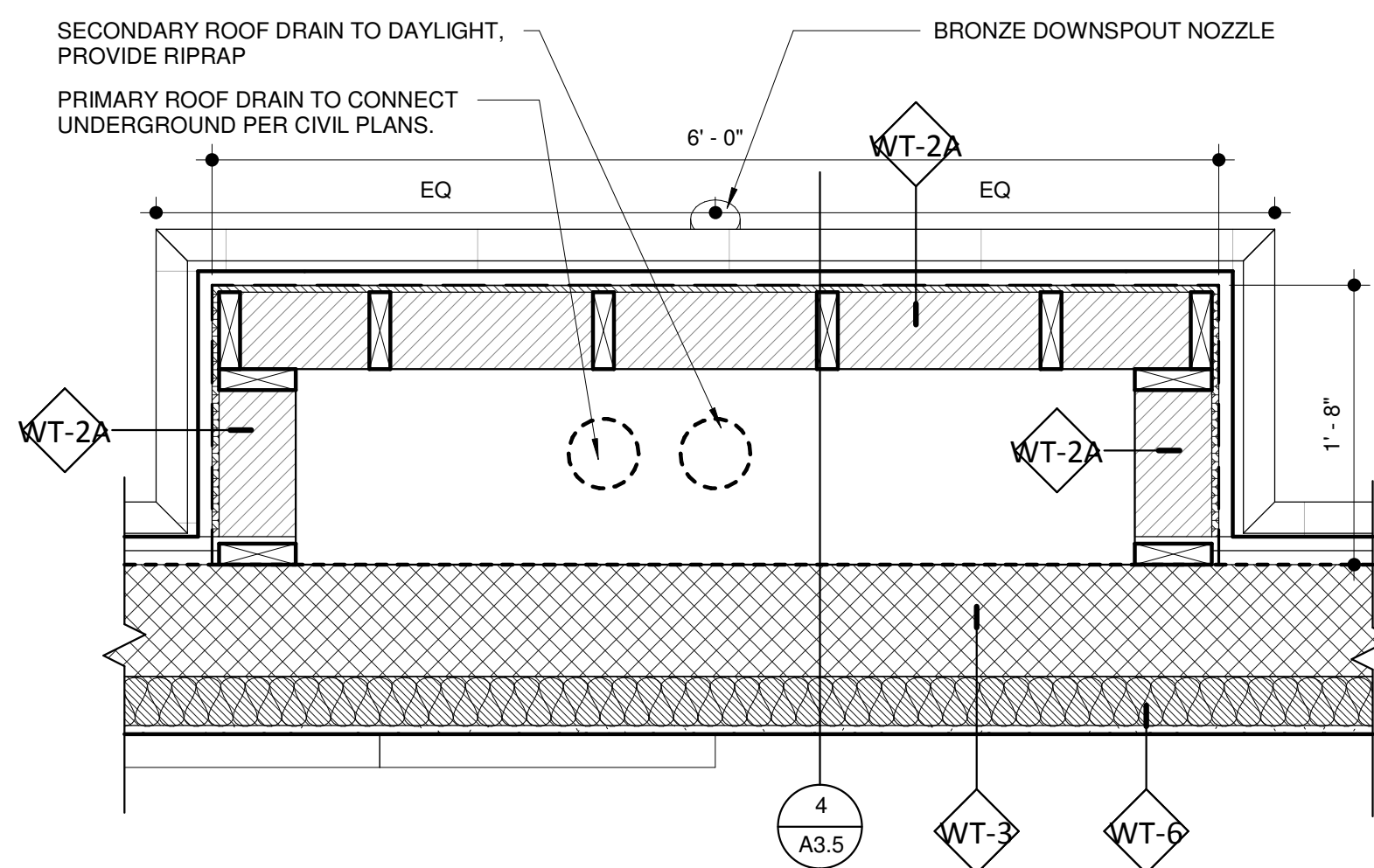
DRAWING TITLE PROPOSED FLOOR PLAN LEVEL 1

DRAWING NUMBER A2.0

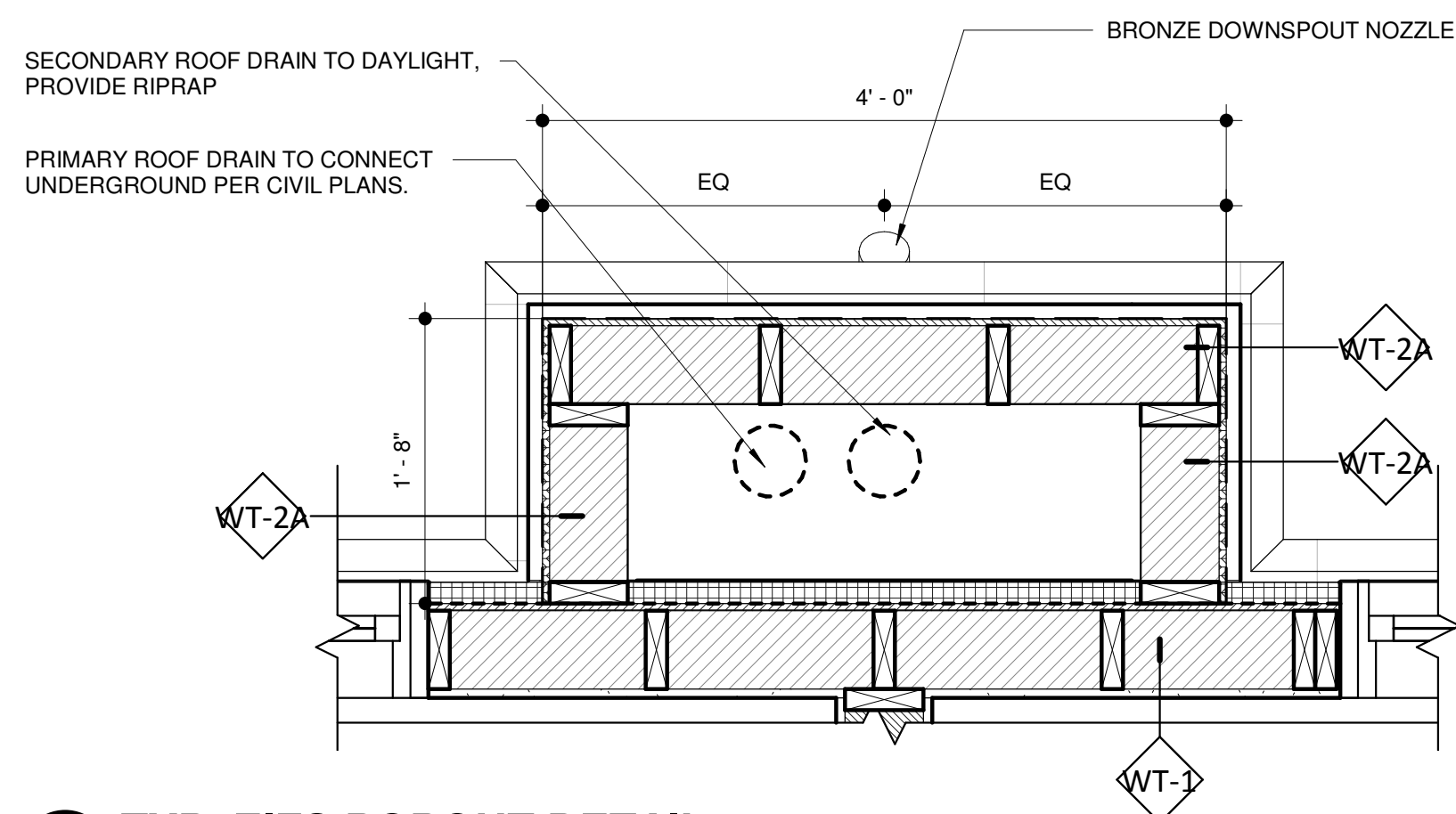




4 TYP. METAL POPOUT @ PLATFORM  
A2.1 1" = 1'-0"



3 TYP. METAL PANEL POPOUT AT GYM  
A2.1 1" = 1'-0"



2 TYP. EIFS POPOUT DETAIL  
A2.1 1" = 1'-0"

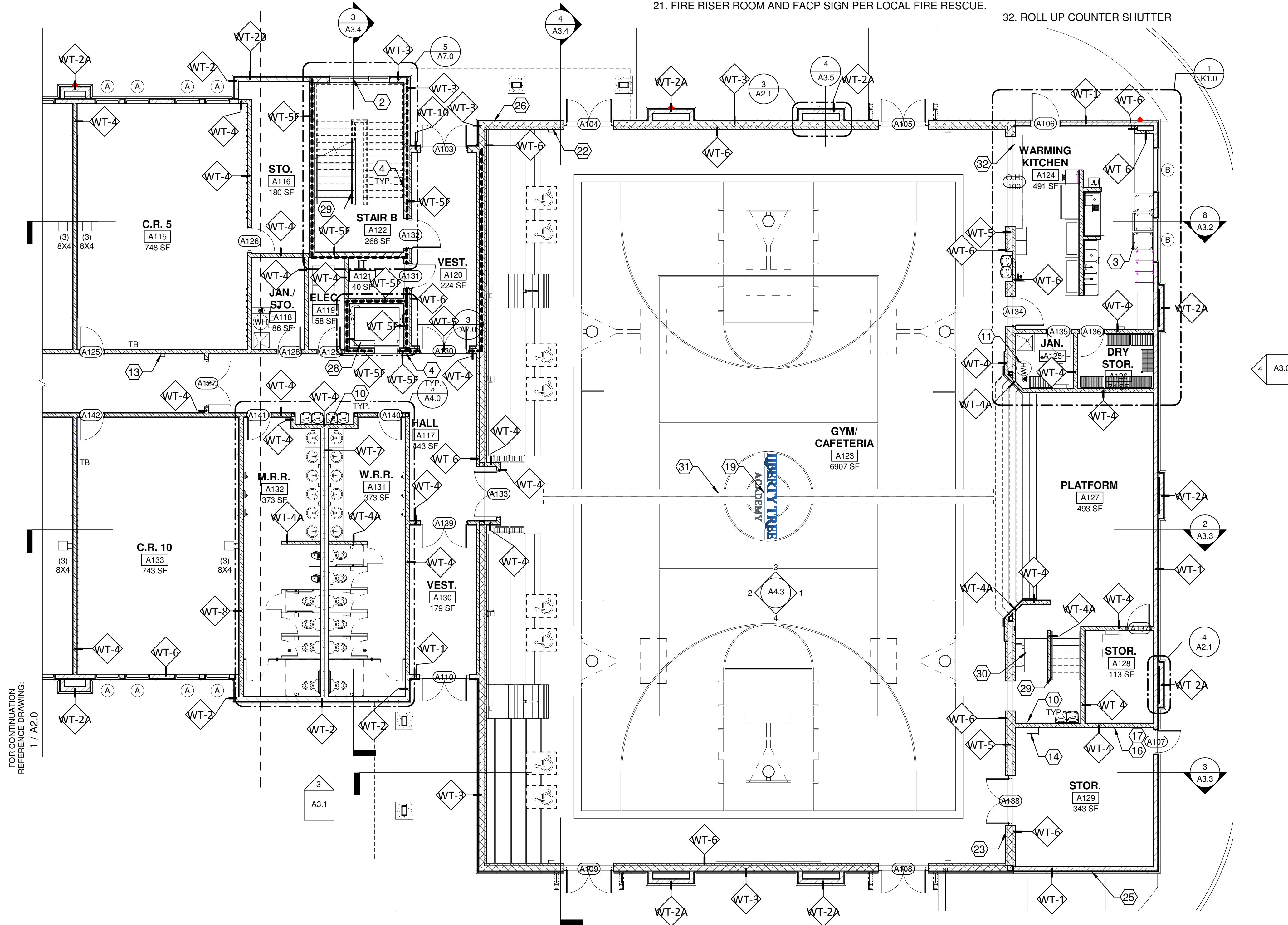
## GENERAL NOTES:

- GENERAL CONTRACTOR IS RESPONSIBLE FOR THE SUPPLY AND COORDINATION OF INSTALLATION FOR ALL BUILDING MATERIAL.
- PROVIDE BACKING AT ALL DOOR BUMPERS.
- PROVIDE DRYWALL CONTROL JOINTS FULL HEIGHT NO MORE THAN 30 FEET APART PER DRYWALL MFR. RECOMMENDATIONS.
- ALL DOORS IN FRAMED WALLS SHALL BE 4" FROM ADJACENT WALL U.N.O.
- PROVIDE VINYL CORNER GUARDS AT ALL HALLWAY CORNERS. MECHANICALLY FASTENED. REFERENCE FINISH PLANS.
- KEYNOTES NOT REFERENCED ON THIS SHEET MAY BE REFERENCED ON ANOTHER SHEET.
- OWNER TO APPROVE ALL PAINT COLORS, FLOORING, FONTS, GRAPHICS AND FINISHES.
- PULL DOWN SHADES AT ALL EXTERIOR & INTERIOR WINDOWS.
- PROVIDE WALL MOUNTED SIGNAGE WITH INSERTS OUTSIDE EACH CLASSROOM PER DETAIL. VERIFY WITH OWNER BEFORE ORDERING.
- PROVIDE BAG HOOKS TO ALL CLASSROOMS, EXCEPT K-CLASSROOMS WITH CUBBIES PER DETAIL 11/A4.3. COORDINATE LOCATIONS WITH OWNER.

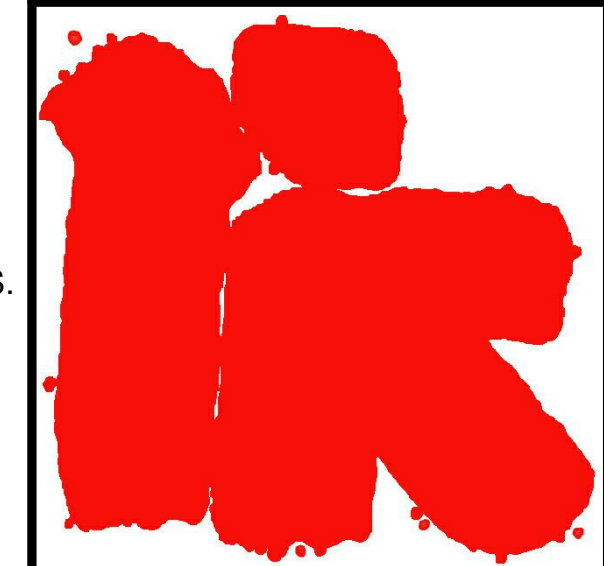
## FLOOR PLAN KEYNOTES:

- WOOD STUD PARTITION PER WALL SCHEDULE.
- STOREFRONT SYSTEM WITH, CLR ANODIZED ALUMINUM MULLIONS AND DOUBLE PANEL INSULATED CLEAR GLASS. 2" x 10" DEEP MULLIONS AT EXTERIOR & 2" x 4 1/2" DEEP MULLIONS AT INTERIOR.
- KITCHEN EQUIPMENT AND FIXTURES PER PLUMBING AND ELECTRICAL SHEETS.
- LAMINATE CMU WALL WITH 5/8" GYP. BD. TEXTURED AND PAINTED.
- ANODIZED ALUMINUM WINDOW PER SCHEDULE.
- INTERIOR ROLLER SHADES AT ALL WINDOWS AND STOREFRONT - TYP.
- MILLWORK PER DETAILS AND FURNITURE BY G.C.
- WALL MOUNTED PROJECTOR INSTALLED PER MFG. SPECIFICATIONS.
- 8'-0" OR 6'-0" WIDE X 4'-0" HIGH WHITE BOARD MOUNTED AT +3'-0" ABOVE FINISH FLOOR - TYP. PER LABELS.
- WALL MOUNTED HI-LOW DRINKING FOUNTAIN, SEE PLUMBING DRAWINGS. PROVIDE CERAMIC TILE AND 5'-0" WAINSCOT.
- ELECTRIC HOT WATER HEATER, SEE PLUMBING DRAWINGS FOR EXACT SIZE AND REQUIREMENTS - TYP.
- PROVIDE FIRE ALARM CONTROL PANEL (FACP) BY G.C. AND BUILDING SECURITY KEYPAD BY OWNER.
- 2A:10BC FIRE EXTINGUISHER IN SEMI-RECESSED FIRE EXTINGUISHER CABINET - TYPICAL (SEE SPECIFICATIONS). PROVIDE MINIMUM OF (1) PER 3000 SF OF BUILDING AREA. MAX TRAVEL DISTANCE TO AN FE SHALL NOT EXCEED 75'.
- ROOF ACCESS LADDER. PROVIDE LOCKABLE ROOF SCUTTLE.
- ELECTRIC PANELS. PROVIDE CLEAR SPACE IN FRONT OF PANELS PER N.E.C. CODE.
- EXTERIOR LIGHTING CONTROLS PER ELECTRICAL DRAWINGS.
- LANDSCAPE TIMER CONTROL PER LANDSCAPE DRAWINGS.
- ACCENT UP LIGHTING PER ELECTRICAL DRAWINGS.
- SCHOOL LOGO PAINTED OR INTEGRAL IN FLOORING.
- PROVIDE JUNCTION BOX FOR POWERED LATCH SYSTEM.
- FIRE RISER ROOM AND FACP SIGN PER LOCAL FIRE RESCUE.

- SIGN POSING MAXIMUM OCCUPANCY PER LIFE SAFETY PLAN.
- PROVIDE ROOF ACCESS SIGN.
- FDC LOCATION. PROVIDE SIGNAGE PER LOCAL FIRE RESCUE.
- ELECTRICAL SERVICE ENTRANCE PER ELECTRIC PLANS.
- PROVIDE FLUSH-MOUNTED KNOX BOX, MODEL NO. 3200 SERIES @ +6'-0" A.F.F. ORDER AND INSTALL PER FIRE DISTRICT REQUIREMENTS.
- COPY MACHINE.
- HYDRAULIC ELEVATOR LIKE THYSEN KRUPP ENDURA HMRL PER SPECIFICATIONS, OR EQ.
- 1-1/2" DIAMETER STEEL PIPE HANDRAIL - PAINTED. MOUNT RAILING AT +2'-10" ABOVE STAIR - TYP.
- WHEEL CHAIR LIFT SHALL CONFORM TO ANSI 410 AND FIGURE 410.2.1 TYP. CONTROLS TO COMPLY WITH ANSI 410 SECTION 309. MINIMUM CLEAR FLOOR WIDTH OF 36" AND DEPTH OF 48"
- RETRACTABLE GYM DIVIDER.
- ROLL UP COUNTER SHUTTER

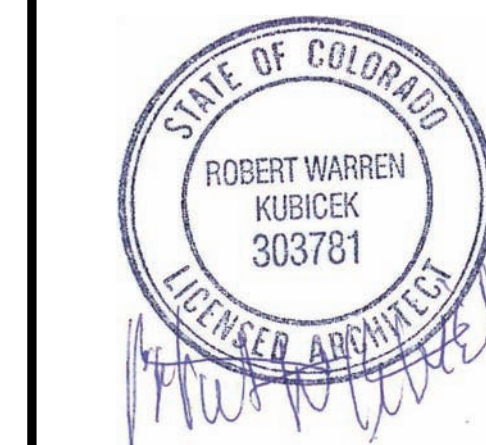


1 PROPOSED FLOOR PLAN LEVEL 1 CONT.  
A2.1 1/8" = 1'-0"



ROBERT WARREN  
KUBICEK  
Architects And Associates, Inc.

2233 East Thomas Road  
Phoenix, Arizona 85016  
(602) 955-3900 RKAA.com



carhuff+cueva  
architects, llc

3149 e prince rd #151  
tucson, arizona 85716  
phone 520.577.4560  
www.cca-az.com  
© carhuff + cueva architects, llc 2015 all rights reserved

NEW SCHOOL CAMPUS FOR:

LIBERTY TREE ACADEMY

8579 EASTONVILLE RD,  
PEYTON, CO 80831

CONSTRUCTION DOCUMENTS

REVISION DATE DESCRIPTION BY

REVISION	DATE	DESCRIPTION	BY

PROJECT NO. P18-8579

DATE MAY 8, 2018

SCALE As indicated DRAWN BY PD

DRAWING TITLE  
PROPOSED FLOOR PLAN LEVEL 1  
CONT.

DRAWING NUMBER  
A2.1

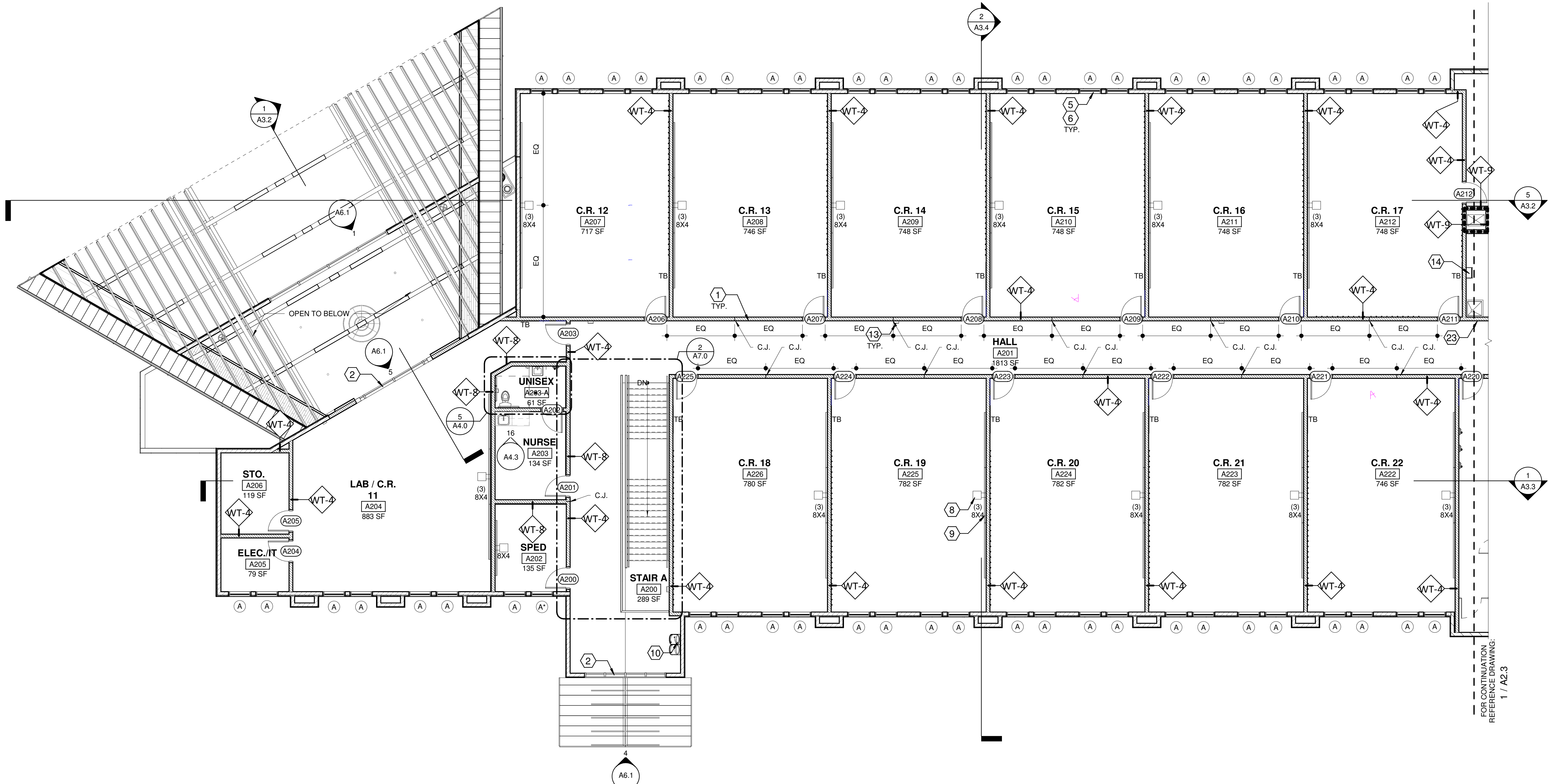


GENERAL NOTES:

1. GENERAL CONTRACTOR IS RESPONSIBLE FOR THE SUPPLY AND COORDINATION OF INSTALLATION FOR ALL BUILDING MATERIAL.
2. PROVIDE BACKING AT ALL DOOR BUMPERS.
3. PROVIDE DRYWALL CONTROL JOINTS FULL HEIGHT NO MORE THAN 30 FEET APART PER DRYWALL MFR. RECOMMENDATIONS.
4. ALL DOORS IN FRAMED WALLS SHALL BE 4" FROM ADJACENT WALL U.N.O.
5. PROVIDE VINYL CORNER GUARDS AT ALL HALLWAY CORNERS. MECHANICALLY FASTENED. REFERENCE FINISH PLANS.
6. KEYNOTES NOT REFERENCED ON THIS SHEET MAY BE REFERENCED ON ANOTHER SHEET.
7. OWNER TO APPROVE ALL PAINT COLORS, FLOORING, FONTS, GRAPHICS AND FINISHES.
8. PULL DOWN SHADES AT ALL EXTERIOR & INTERIOR WINDOWS.
9. PROVIDE WALL MOUNTED SIGNAGE WITH INSERTS OUTSIDE EACH CLASSROOM PER DETAIL. VERIFY WITH OWNER BEFORE ORDERING.
10. PROVIDE BAG HOOKS TO ALL CLASSROOMS, EXCEPT K-CLASSROOMS WITH CUBBIES PER DETAIL 11/A4.3. COORDINATE LOCATIONS WITH OWNER.

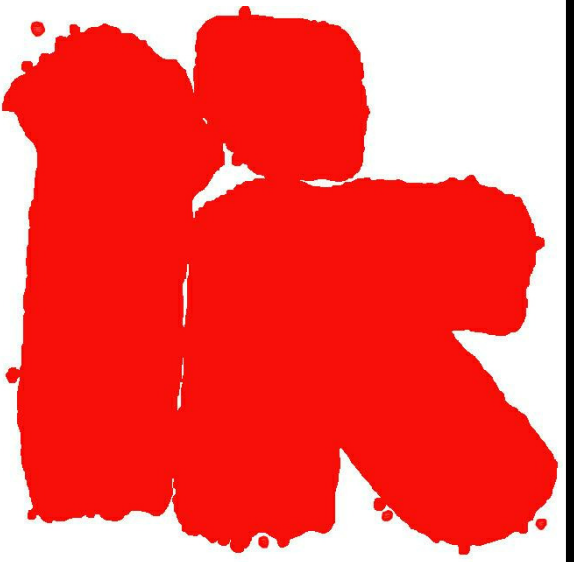
FLOOR PLAN KEYNOTES:

1. WOOD STUD PARTITION PER WALL SCHEDULE.
2. STOREFRONT SYSTEM WITH, CLR ANODIZED ALUMINUM MULLIONS AND DOUBLE PANEL INSULATED CLEAR GLASS. 2" x 10" DEEP MULLIONS AT EXTERIOR & 2" x 4 1/2" DEEP MULLIONS AT INTERIOR.
3. KITCHEN EQUIPMENT AND FIXTURES PER PLUMBING AND ELECTRICAL SHEETS.
4. LAMINATE CMU WALL WITH 5/8" GYP. BD. TEXTURED AND PAINTED.
5. ANODIZED ALUMINUM WINDOW PER SCHEDULE.
6. INTERIOR ROLLER SHADES AT ALL WINDOWS AND STOREFRONT - TYP.
7. MILLWORK PER DETAILS AND FURNITURE BY G.C.
8. WALL MOUNTED PROJECTOR INSTALLED PER MFG. SPECIFICATIONS.
9. 8'-0" OR 6'-0" WIDE X 4'-0" HIGH WHITE BOARD MOUNTED AT +3'-0" ABOVE FINISH FLOOR - TYP. PER LABELS.
10. WALL MOUNTED HI-LOW DRINKING FOUNTAIN, SEE PLUMBING DRAWINGS. PROVIDE CERAMIC TILE AND 5'-0" WAINSCOT.
11. ELECTRIC HOT WATER HEATER, SEE PLUMBING DRAWINGS FOR EXACT SIZE AND REQUIREMENTS - TYP
12. PROVIDE FIRE ALARM CONTROL PANEL (FACP) BY G.C. AND BUILDING SECURITY KEYPAD BY OWNER.
13. 2A:10BC FIRE EXTINGUISHER IN SEMI-RECESSED FIRE EXTINGUISHER CABINET - TYPICAL (SEE SPECIFICATIONS). PROVIDE MINIMUM OF (1) PER 3000 SF OF BUILDING AREA. MAX TRAVEL DISTANCE TO AN FE SHALL NOT EXCEED 75'.
14. ROOF ACCESS LADDER. PROVIDE LOCKABLE ROOF SCUTTLE.
15. ELECTRIC PANELS. PROVIDE CLEAR SPACE IN FRONT OF PANELS PER N.E.C. CODE.
16. EXTERIOR LIGHTING CONTROLS PER ELECTRICAL DRAWINGS.
17. LANDSCAPE TIMER CONTROL PER LANDSCAPE DRAWINGS.
18. ACCENT UP LIGHTING PER ELECTRICAL DRAWINGS.
19. SCHOOL LOGO PAINTED OR INTEGRAL IN FLOORING.
20. PROVIDE JUNCTION BOX FOR POWERED LATCH SYSTEM.
21. FIRE RISER ROOM AND FACP SIGN PER LOCAL FIRE RESCUE.
22. SIGN POSING MAXIMUM OCCUPANCY PER LIFE SAFETY PLAN.
23. PROVIDE ROOF ACCESS SIGN.
24. FDC LOCATION. PROVIDE SIGNAGE PER LOCAL FIRE RESCUE.
25. ELECTRICAL SERVICE ENTRANCE PER ELECTRIC PLANS.
26. PROVIDE FLUSH-MOUNTED KNOX BOX, MODEL NO. 3200 SERIES @ +6'-0" A.F.F. ORDER AND INSTALL PER FIRE DISTRICT REQUIREMENTS.
27. COPY MACHINE.
28. HYDRAULIC ELEVATOR LIKE THYSSEN KRUPP ENDURA HMRL PER SPECIFICATIONS, OR EQ.
29. 1-1/2" DIAMETER STEEL PIPE HANDRAIL - PAINTED. MOUNT RAILING AT +2'-10" ABOVE STAIR - TYP.
30. WHEEL CHAIR LIFT SHALL CONFORM TO ANSI 410 AND FIGURE 410.2.1 TYP. CONTROLS TO COMPLY WITH ANSI 410 SECTION 309. MINIMUM CLEAR FLOOR WIDTH OF 36" AND DEPTH OF 48"
31. RETRACTABLE GYM DIVIDER.
32. ROLL UP COUNTER SHUTTER



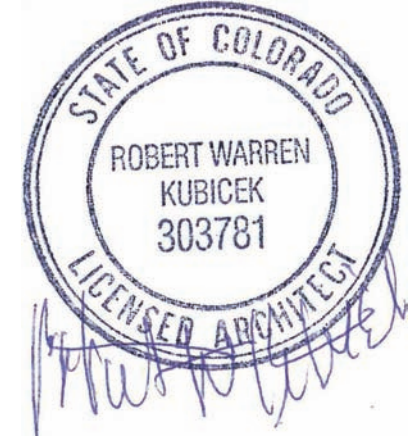
1  
A2.2  
PROPOSED FLOOR PLAN LEVEL 2  
1/8" = 1'-0"

LIBERTY TREE  
ACADEMY



ROBERT WARREN  
KUBICEK  
Architects And Associates, Inc.

2233 East Thomas Road  
Phoenix, Arizona 85016  
(602) 955-3900 RKAA.com



carhuff+cueva  
architects, llc

3149 e prince rd #151  
tucson, arizona 85716  
phone 520.577.4560  
www.cca-az.com

NEW SCHOOL CAMPUS FOR:

LIBERTY TREE ACADEMY

8579 EASTONVILLE RD,  
PEYTON, CO 80831

CONSTRUCTION DOCUMENTS

REVISION	DATE	DESCRIPTION	BY

PROJECT NO. P18-8579

DATE MAY 8, 2018

SCALE As indicated DRAWN BY PD

DRAWING TITLE PROPOSED FLOOR PLAN LEVEL 2

DRAWING NUMBER A2.2



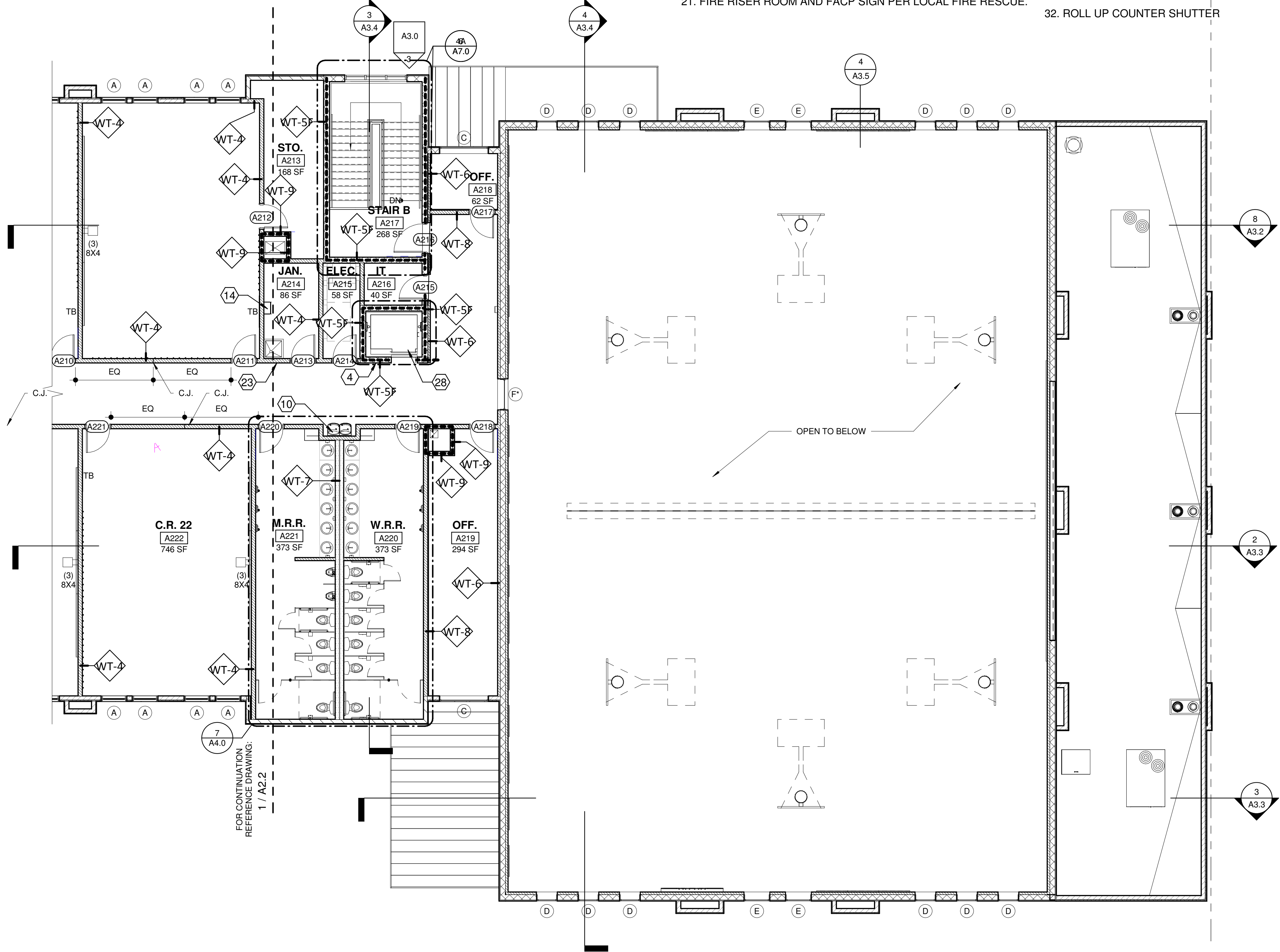
GENERAL NOTES:

1. GENERAL CONTRACTOR IS RESPONSIBLE FOR THE SUPPLY AND COORDINATION OF INSTALLATION FOR ALL BUILDING MATERIAL.
2. PROVIDE BACKING AT ALL DOOR BUMPERS.
3. PROVIDE DRYWALL CONTROL JOINTS FULL HEIGHT NO MORE THAN 30 FEET APART PER DRYWALL MFR. RECOMMENDATIONS.
4. ALL DOORS IN FRAMED WALLS SHALL BE 4" FROM ADJACENT WALL U.N.O.
5. PROVIDE VINYL CORNER GUARDS AT ALL HALLWAY CORNERS. MECHANICALLY FASTENED. REFERENCE FINISH PLANS.
6. KEYNOTES NOT REFERENCED ON THIS SHEET MAY BE REFERENCED ON ANOTHER SHEET.
7. OWNER TO APPROVE ALL PAINT COLORS, FLOORING, FONTS, GRAPHICS AND FINISHES.
8. PULL DOWN SHADES AT ALL EXTERIOR & INTERIOR WINDOWS.
9. PROVIDE WALL MOUNTED SIGNAGE WITH INSERTS OUTSIDE EACH CLASSROOM PER DETAIL. VERIFY WITH OWNER BEFORE ORDERING.
10. PROVIDE BAG HOOKS TO ALL CLASSROOMS, EXCEPT K-CLASSROOMS WITH CUBBIES PER DETAIL 11/A4.3. COORDINATE LOCATIONS WITH OWNER.

FLOOR PLAN KEYNOTES:

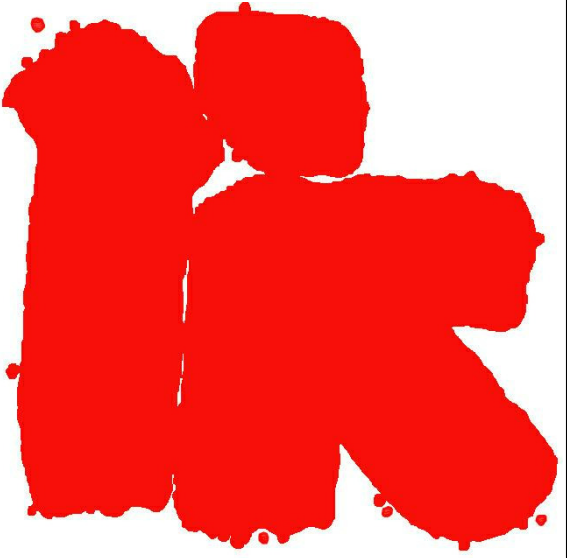
1. WOOD STUD PARTITION PER WALL SCHEDULE.
2. STOREFRONT SYSTEM WITH, CLR ANODIZED ALUMINUM MULLIONS AND DOUBLE PANEL INSULATED CLEAR GLASS. 2" x 10" DEEP MULLIONS AT EXTERIOR & 2" x 4 1/2" DEEP MULLIONS AT INTERIOR.
3. KITCHEN EQUIPMENT AND FIXTURES PER PLUMBING AND ELECTRICAL SHEETS.
4. LAMINATE CMU WALL WITH 5/8" GYP. BD. TEXTURED AND PAINTED.
5. ANODIZED ALUMINUM WINDOW PER SCHEDULE.
6. INTERIOR ROLLER SHADES AT ALL WINDOWS AND STOREFRONT - TYP.
7. MILLWORK PER DETAILS AND FURNITURE BY G.C.
8. WALL MOUNTED PROJECTOR INSTALLED PER MFG. SPECIFICATIONS.
9. 8'-0" OR 6'-0" WIDE X 4'-0" HIGH WHITE BOARD MOUNTED AT +3'-0" ABOVE FINISH FLOOR - TYP. PER LABELS.
10. WALL MOUNTED HI-LOW DRINKING FOUNTAIN, SEE PLUMBING DRAWINGS. PROVIDE CERAMIC TILE AND 5'-0" WAINSCOT.
11. ELECTRIC HOT WATER HEATER, SEE PLUMBING DRAWINGS FOR EXACT SIZE AND REQUIREMENTS - TYP
12. PROVIDE FIRE ALARM CONTROL PANEL (FACP) BY G.C. AND BUILDING SECURITY KEYPAD BY OWNER.
13. 2A:10BC FIRE EXTINGUISHER IN SEMI-RECESSED FIRE EXTINGUISHER CABINET - TYPICAL (SEE SPECIFICATIONS). PROVIDE MINIMUM OF (1) PER 3000 SF OF BUILDING AREA. MAX TRAVEL DISTANCE TO AN FE SHALL NOT EXCEED 75'.
14. ROOF ACCESS LADDER. PROVIDE LOCKABLE ROOF SCUTTLE.
15. ELECTRIC PANELS. PROVIDE CLEAR SPACE IN FRONT OF PANELS PER N.E.C. CODE.
16. EXTERIOR LIGHTING CONTROLS PER ELECTRICAL DRAWINGS.
17. LANDSCAPE TIMER CONTROL PER LANDSCAPE DRAWINGS.
18. ACCENT UP LIGHTING PER ELECTRICAL DRAWINGS.
19. SCHOOL LOGO PAINTED OR INTEGRAL IN FLOORING.
20. PROVIDE JUNCTION BOX FOR POWERED LATCH SYSTEM.
21. FIRE RISER ROOM AND FACP SIGN PER LOCAL FIRE RESCUE.

22. SIGN POSING MAXIMUM OCCUPANCY PER LIFE SAFETY PLAN.
23. PROVIDE ROOF ACCESS SIGN.
24. FDC LOCATION. PROVIDE SIGNAGE PER LOCAL FIRE RESCUE.
25. ELECTRICAL SERVICE ENTRANCE PER ELECTRIC PLANS.
26. PROVIDE FLUSH-MOUNTED KNOX BOX, MODEL NO. 3200 SERIES @ +6'-0" A.F.F. ORDER AND INSTALL PER FIRE DISTRICT REQUIREMENTS.
27. COPY MACHINE.
28. HYDRAULIC ELEVATOR LIKE THYSSEN KRUPP ENDURA HMRL PER SPECIFICATIONS, OR EQ.
29. 1-1/2" DIAMETER STEEL PIPE HANDRAIL - PAINTED. MOUNT RAILING AT +2'-10" ABOVE STAIR - TYP.
30. WHEEL CHAIR LIFT SHALL CONFORM TO ANSI 410 AND FIGURE 410.2.1 TYP. CONTROLS TO COMPLY WITH ANSI 410 SECTION 309. MINIMUM CLEAR FLOOR WIDTH OF 36" AND DEPTH OF 48"
31. RETRACTABLE GYM DIVIDER.
32. ROLL UP COUNTER SHUTTER



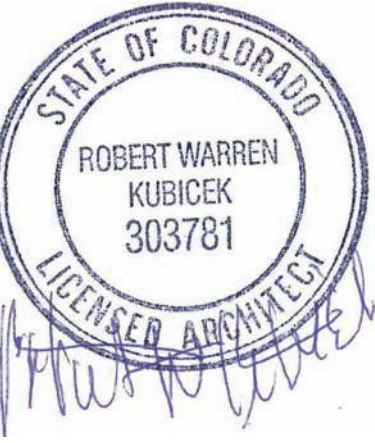
1  
A2.3  
PROPOSED FLOOR PLAN LEVEL 2 CONT.  
1/8" = 1'-0"

LIBERTY TREE  
ACADEMY



ROBERT WARREN  
KUBICEK  
Architects And Associates, Inc.

2233 East Thomas Road  
Phoenix, Arizona 85016  
(602) 955-3900 RKAa.com



carhuff+cueva  
architects, llc

3149 e prince rd #151  
tucson, arizona 85716  
phone 520.577.4560  
www.cca-az.com  
© carhuff + cueva architects, llc 2015 all rights reserved

NEW SCHOOL CAMPUS FOR:

LIBERTY TREE ACADEMY

8579 EASTONVILLE RD,  
PEYTON, CO 80831

CONSTRUCTION DOCUMENTS

REVISION	DATE	DESCRIPTION	BY

PROJECT NO.  
P18-8579

DATE  
MAY 8, 2018

SCALE  
As indicated

DRAWN BY  
PD

DRAWING TITLE  
PROPOSED FLOOR PLAN LEVEL 2 -

CONT.

DRAWING NUMBER  
A2.3

