



LIBERTY TREE ACADEMY SITE DEVELOPMENT PLAN

TOWN OF PEYTON, EL PASO COUNTY

FINAL JUNE 2018

Do not include lighting plan and other documents in this submittal, upload lighting plan to the lighting plan spot, etc

Concur, lighting sheets removed.

INDEX OF SHEETS

DRAWING NO.	DRAWING DESCRIPTION	SHEET NO.
TS01	TITLE SHEET	1
SP01	SITE PLAN	2
GR01	GRADING PLAN	3
UT01	OVERALL UTILITY PLAN	4
LS01	LANDSCAPE PLAN	5
SK2.0	PRESENTATION ELEVATIONS	6
SP1.0	ARCHITECTURAL SITE PLAN	7
SP1.1	SITE DETAILS	8
E1.1	ELECTRICAL SITE PLAN	9
E1.2	ELECTRICAL SITE PHOTOMETRIC CALCULATIONS	10
E1.3	EXTERIOR LIGHT FIXTURES CUT SHEETS	11

LAND USE SUMMARY

PARCEL AREA:	10.7 acres
PROJECT AREA:	3.4 acres
BUILDING AREA (PHASE 1):	41,585 sf
FAR:	0.28

CIVIL ENGINEER

MATRIX DESIGN GROUP
1601 BLAKE STREET, SUITE 200
DENVER, CO. 80202
PH: 303-572-0200
FAX: 303-572-0202
CONTACT: DAVE KLINE, P.E., PTOE
DAVE_KLINE@MATRIXDESIGNGROUP.COM

LANDSCAPE ARCHITECT

MATRIX DESIGN GROUP
1601 BLAKE STREET, SUITE 200
DENVER, CO. 80202
PH: 303-572-0200
FAX: 303-572-0202
CONTACT: TERESA ROBERSON
TERESA_ROBERSON@MATRIXDESIGNGROUP.COM

LEGAL DESCRIPTION:

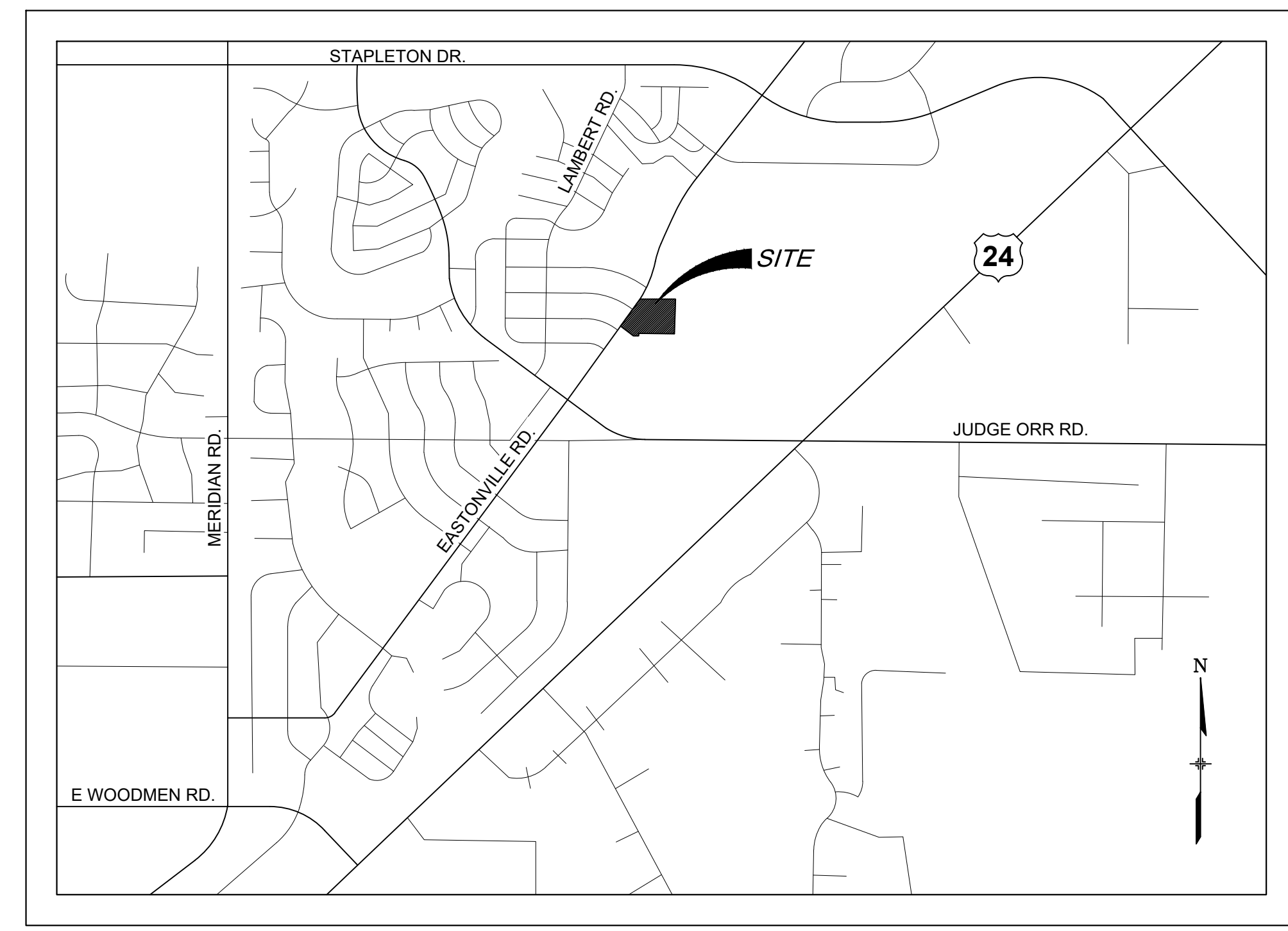
LOT 1178, WOODMEN HILLS FILING NO. 10
COUNTY OF EL PASO
STATE OF COLORADO

BASIS OF BEARING:

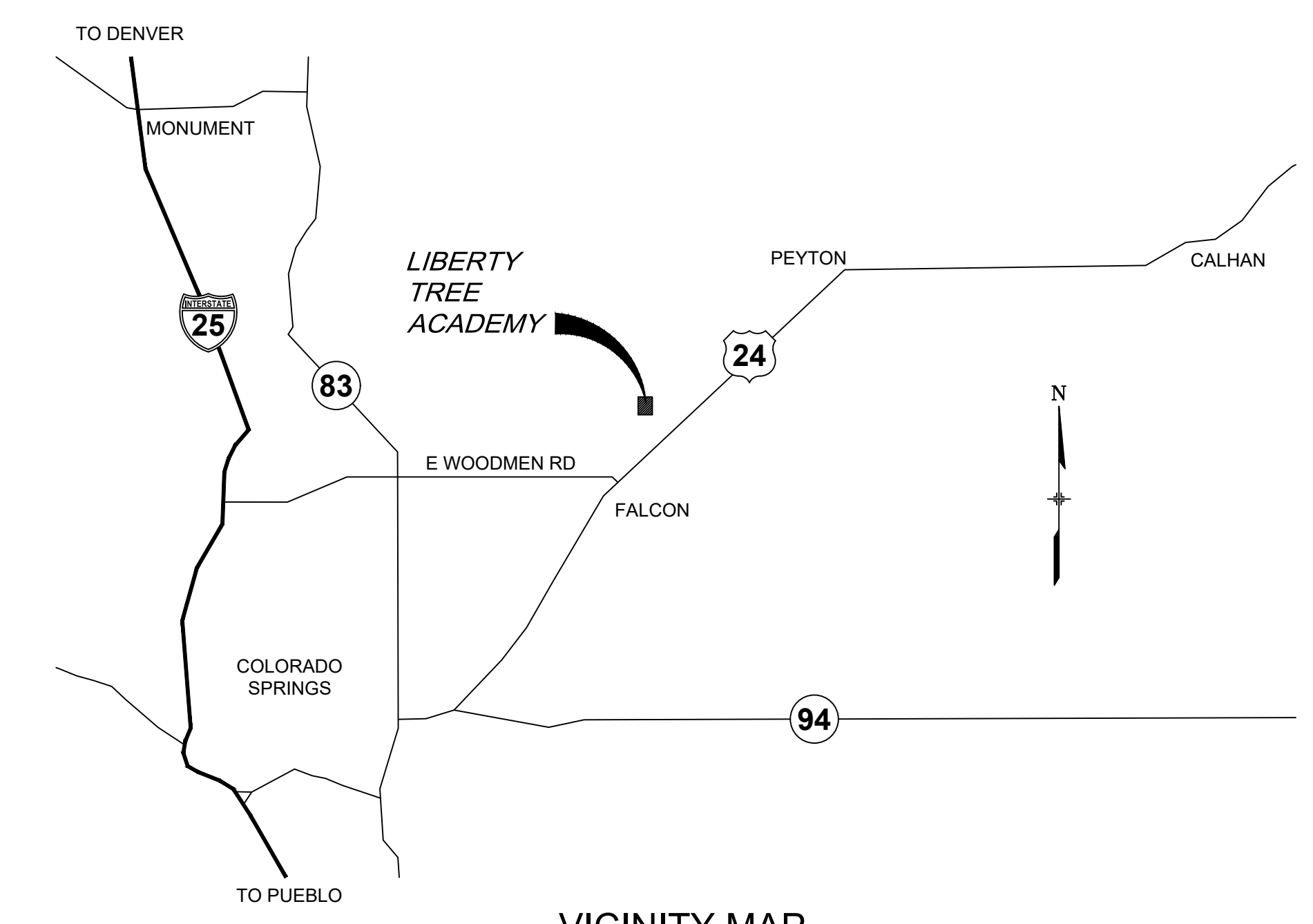
BASIS OF BEARINGS: BEARINGS ARE BASED ON GRID BEARINGS OF THE COLORADO STATE PLANE CENTRAL ZONE, BASED ON THE EAST LINE OF LOT 1178 OF THE PLAT OF WOODMEN HILLS FILING NO. 10 AS RECORDED ON JULY 13, 2001 IN THE OFFICE OF THE EL PASO COUNTY CLERK AND RECORDER UNDER RECEPTION NUMBER 201098618, MONUMENTED ON THE NORTH END BY A FOUND 2-1/2" ALUMINUM CAP STAMPED "PLS 38160" AND ON THE SOUTH END BY A FOUND 1-1/2" ALUMINUM CAP STAMPED "PLS 32822", AND BEARS SOUTH 00°24'21" EAST A DISTANCE OF 1116.46 FEET.

BENCHMARK:

BENCHMARK IS DERIVED FROM AN ONLINE POSITIONING USER SERVICE PROVIDED BY THE NATIONAL GEODETIC SURVEY PERFORMED ON A SET #5 REBAR LOCATED ON THE EAST SIDE OF EASTONVILLE ROAD NEAR THE SOUTH PCR APPROXIMATELY 20 FEET SOUTH OF A SANITARY MANHOLE AND 12 FEET EAST OF A FIRE HYDRANT. THE ELEVATION DERIVED FROM THE STATIC SOLUTION IS 6960.52 U.S. SURVEY FEET (NAVD 88).



LOCATION MAP
SCALE: N.T.S.



VICINITY MAP
SCALE: N.T.S.

EL PASO COUNTY:

COUNTY PLAN REVIEW IS PROVIDED ONLY FOR GENERAL CONFORMANCE WITH COUNTY DESIGN CRITERIA. THE COUNTY IS NOT RESPONSIBLE FOR THE ACCURACY AND ADEQUACY OF THE DESIGN, DIMENSIONS, AND/OR ELEVATIONS WHICH SHALL BE CONFIRMED AT THE JOB SITE. THE COUNTY THROUGH THE APPROVAL OF THIS DOCUMENT ASSUMES NO RESPONSIBILITY FOR COMPLETENESS AND/OR ACCURACY OF THIS DOCUMENT.

FILED IN ACCORDANCE WITH THE REQUIREMENTS OF THE EL PASO COUNTY LAND DEVELOPMENT CODE, DRAINAGE CRITERIA MANUAL, VOLUMES 1 AND 2, AND ENGINEERING CRITERIA MANUAL AS AMENDED.

IN ACCORDANCE WITH ECM SECTION 1.12, THESE CONSTRUCTION DOCUMENTS WILL BE VALID FOR CONSTRUCTION FOR A PERIOD OF 2 YEARS FROM THE DATE SIGNED BY THE EL PASO COUNTY ENGINEER. IF CONSTRUCTION HAS NOT STARTED WITHIN THOSE 2 YEARS, THE PLANS WILL NEED TO BE RESUBMITTED FOR APPROVAL, INCLUDING PAYMENT OF REVIEW FEES AT THE PLANNING AND COMMUNITY DEVELOPMENT DIRECTORS DISCRETION.

JENNIFER IRVINE, P.E. _____ DATE _____

OWNER/DEVELOPER'S STATEMENT:

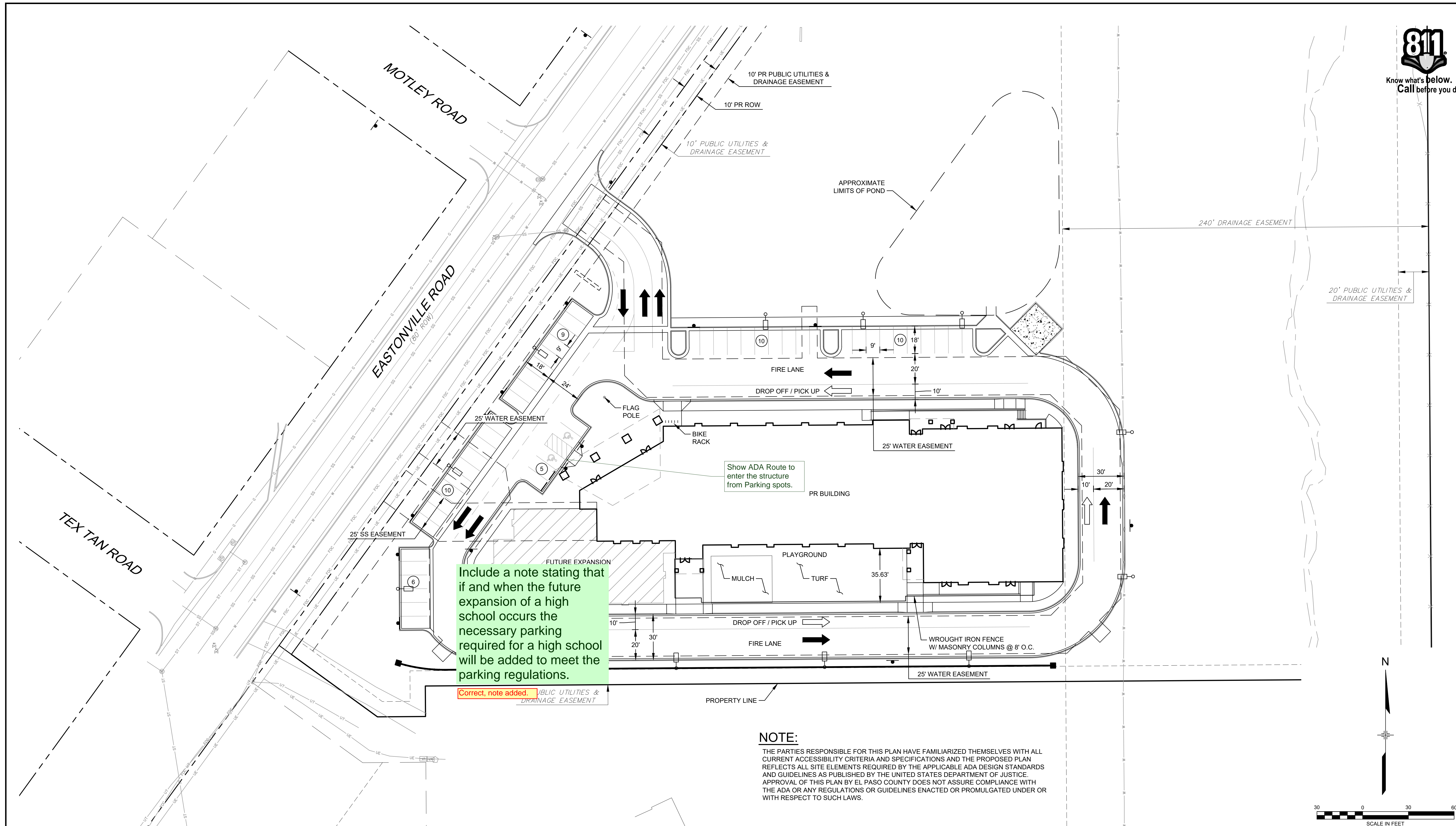
I, THE OWNER/DEVELOPER HAVE READ AND WILL COMPLY WITH ALL OF THE REQUIREMENTS SPECIFIED IN THESE DETAILED PLANS AND SPECIFICATIONS.

LIBERTY TREE ACADEMY COMPANY _____ DATE _____

REFERENCE DRAWINGS X-995-MD022x34						SHEET KEY 	 LIBERTY TREE ACADEMY PREPARED BY: MATRIX DESIGN GROUP AN EMPLOYEE-OWNED COMPANY		LIBERTY TREE ACADEMY			
	TOWN OF PEYTON, EL PASO COUNTY SITE DEVELOPMENT PLAN											
	TITLE SHEET											
	DESIGNED BY:	ACR	SCALE	DATE ISSUED:								
	DRAWN BY:	ACR	HORIZ.	JUNE 2018								
CHECKED BY:	DRK	VERT.	SHEET	1 OF 11	DRAWING No.	TS01						



Know what's below.
Call before you dig.



Include a note stating that if and when the future expansion of a high school occurs the necessary parking required for a high school will be added to meet the parking regulations.

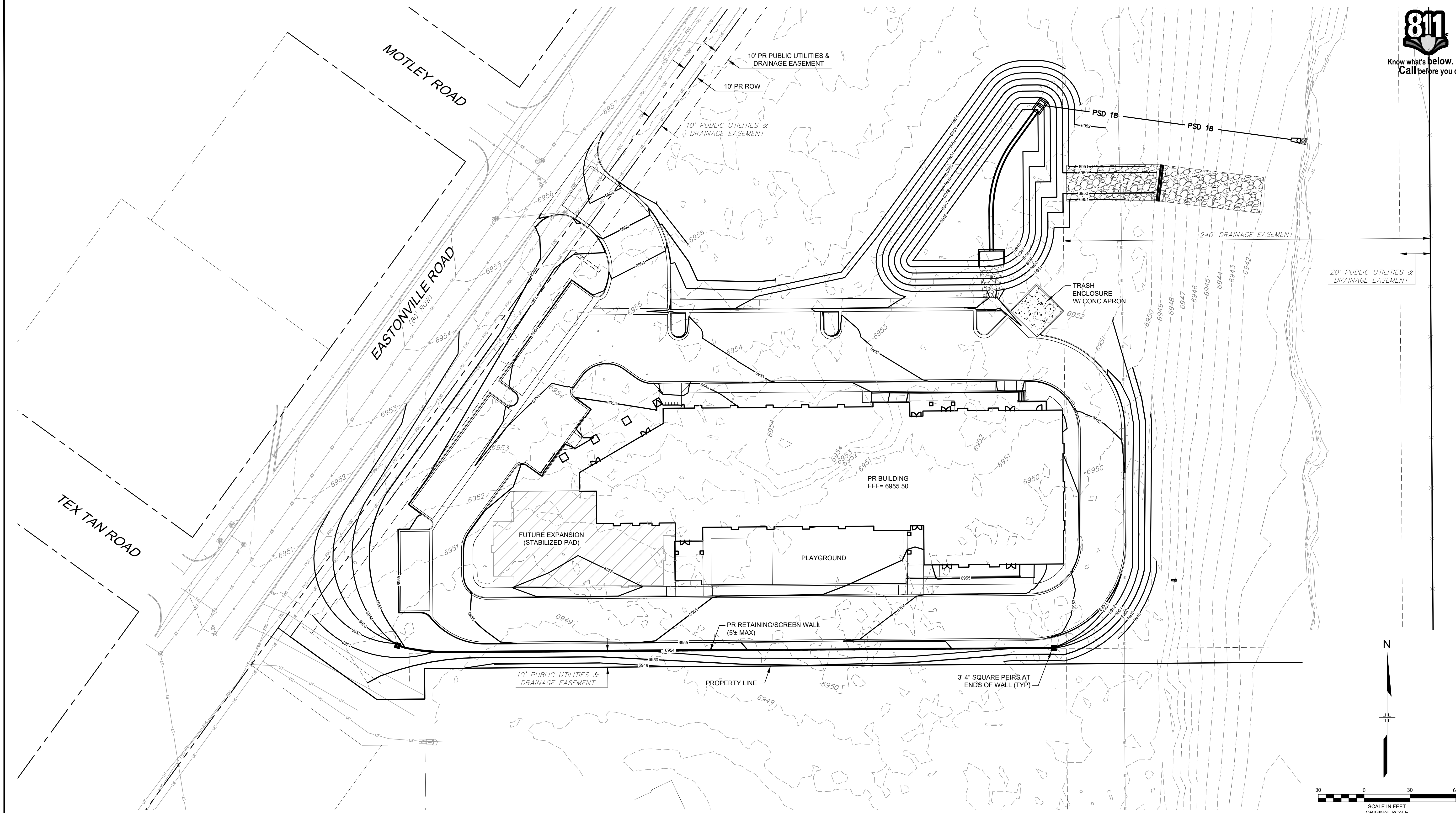
Correct, note added.

NOTE:
THE PARTIES RESPONSIBLE FOR THIS PLAN HAVE FAMILIARIZED THEMSELVES WITH ALL CURRENT ACCESSIBILITY CRITERIA AND SPECIFICATIONS AND THE PROPOSED PLAN REFLECTS ALL SITE ELEMENTS REQUIRED BY THE APPLICABLE ADA DESIGN STANDARDS AND GUIDELINES AS PUBLISHED BY THE UNITED STATES DEPARTMENT OF JUSTICE. APPROVAL OF THIS PLAN BY EL PASO COUNTY DOES NOT ASSURE COMPLIANCE WITH THE ADA OR ANY REGULATIONS OR GUIDELINES ENACTED OR PROMULGATED UNDER OR WITH RESPECT TO SUCH LAWS.

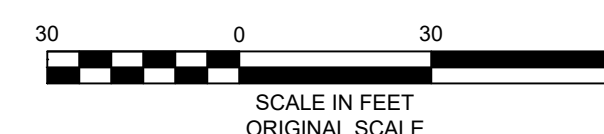
REFERENCE DRAWINGS		SHEET KEY		PREPARED FOR: LIBERTY TREE ACADEMY		SEAL 		LIBERTY TREE ACADEMY	
X-995-MDQ22x34 X-995-PR-BASE X-995-EX-BASE X-995-EX-MAP X-995-PR-UTIL LTA OVERALL FIRST FLOOR PLAN				PREPARED BY: Matrix DESIGN GROUP AN EMPLOYEE-OWNED COMPANY		FOR AND ON BEHALF OF MATRIX DESIGN GROUP, INC. PROJECT No. 18.995.001		TOWN OF PEYTON, EL PASO COUNTY SITE DEVELOPMENT PLAN	
COMPUTER FILE MANAGEMENT FILE NAME: R:118.995.001 (Liberty Tree Academy)\Dwg\Site Development Plan\SP01_SDP.dwg CTB FILE: --- PLOT DATE: 7/2/2018 5:31 PM THIS DRAWING IS CURRENT AS OF PLOT DATE AND MAY BE SUBJECT TO CHANGE.								SITE PLAN	
NO. DATE DESCRIPTION REVISIONS BY								DESIGNED BY: ACR SCALE: DATE ISSUED: JUNE 2018 DRAWING No. SP01	
								DRAWN BY: ACR HORIZ. SHEET 2 OF 11	
								CHECKED BY: DRK VERT.	



Know what's below.
Call before you dig.

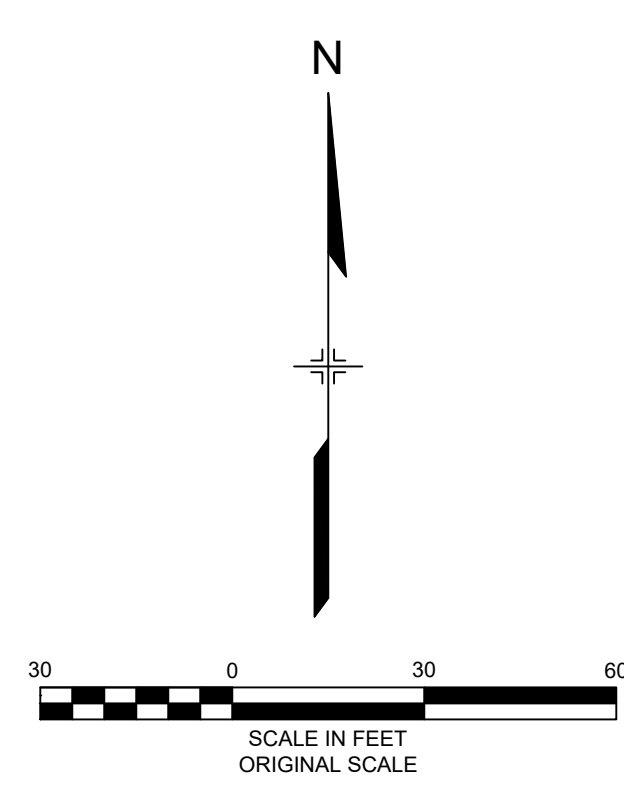
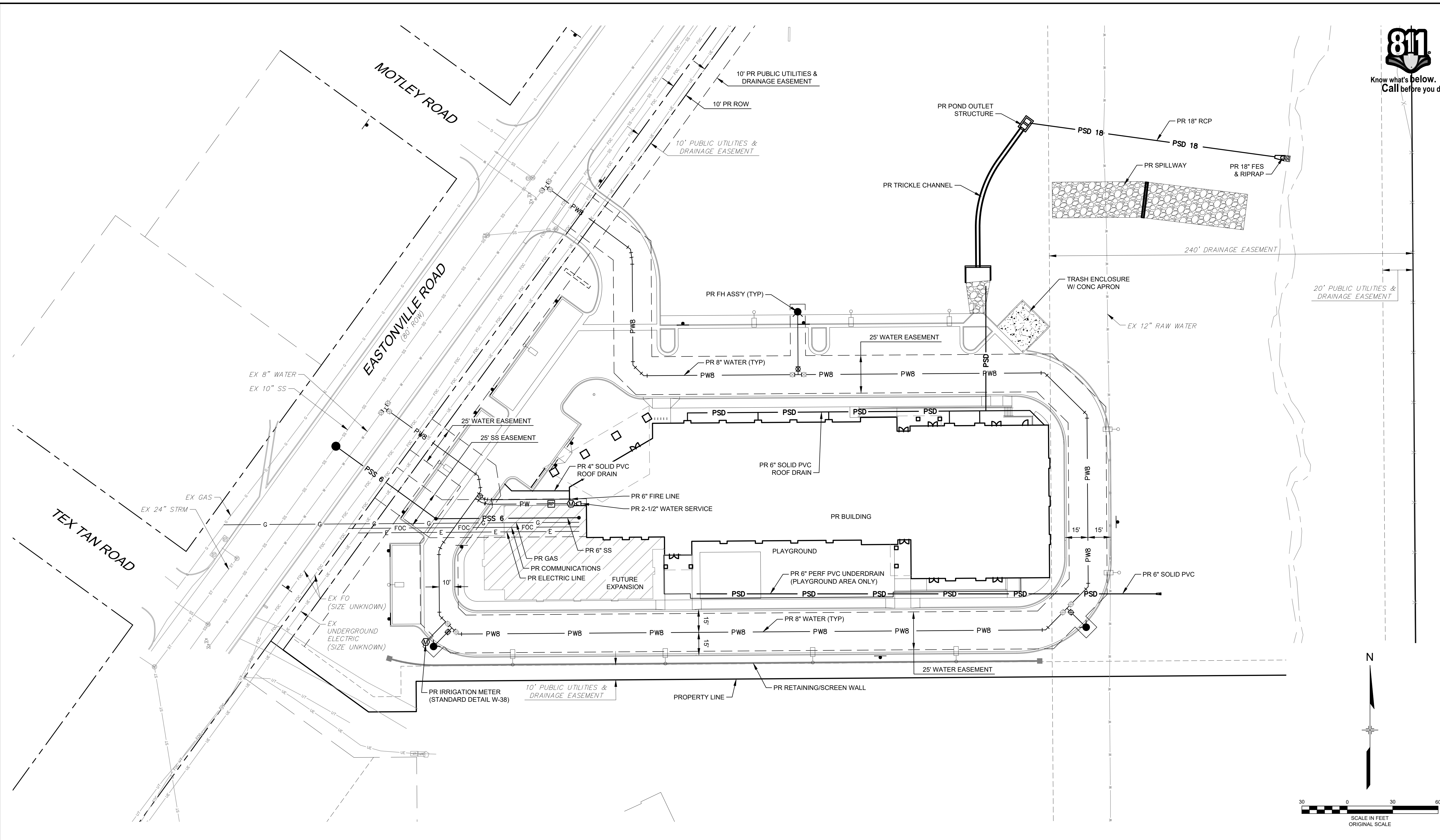


N



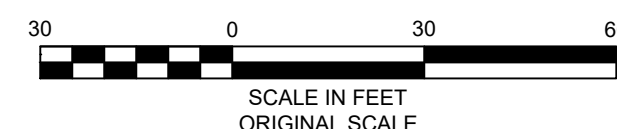
REFERENCE DRAWINGS				SHEET KEY		LIBERTY TREE ACADEMY		TOWN OF PEYTON, EL PASO COUNTY SITE DEVELOPMENT PLAN			
X-995-MD322x34 X-995-PR-BASE X-995-EX-BASE X-995-EX-MAP X-995-PR-UTIL X-995-PR-GRAD LTA OVERALL FIRST FLOOR PLAN						PREPARED FOR: LIBERTY TREE ACADEMY		SEAL 			
						PREPARED BY: Matrix DESIGN GROUP AN EMPLOYEE-OWNED COMPANY		FOR AND ON BEHALF OF MATRIX DESIGN GROUP, INC. PROJECT No. 18.995.001			
								GRADING PLAN			
								DESIGNED BY: ACR DRAWN BY: ACR CHECKED BY: DRK			
								SCALE HORIZ. VERT.			
								DATE ISSUED: JUNE 2018 SHEET 3 OF 11			
								DRAWING No. GR01			

COMPUTER FILE MANAGEMENT
FILE NAME: R:18.995.001 (Liberty Tree Academy)\Dwg\Site Development Plan\GR01_SDP.dwg
CTB FILE: ---
PLOT DATE: 7/2/2018 5:32 PM
THIS DRAWING IS CURRENT AS OF PLOT DATE AND MAY BE SUBJECT TO CHANGE.

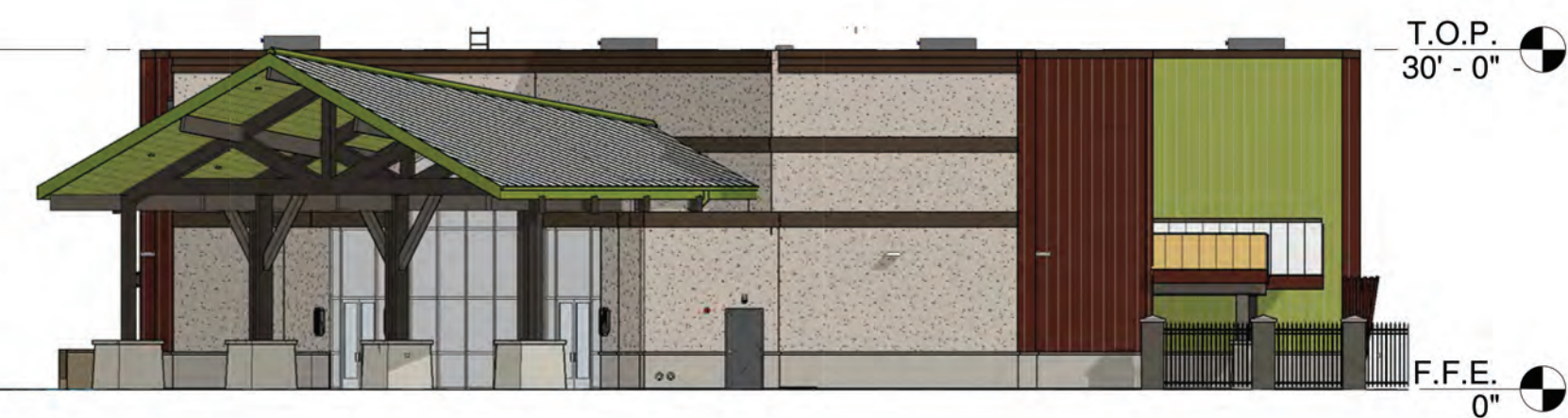


REFERENCE DRAWINGS						SHEET KEY				PREPARED FOR:		SEAL		LIBERTY TREE ACADEMY	
X-995-MDC22x34 X-995-PR-BASE X-995-EX-BASE X-995-EX-MAP X-995-PR-UTIL LTA OVERALL FIRST FLOOR PLAN										LIBERTY TREE ACADEMY				TOWN OF PEYTON, EL PASO COUNTY SITE DEVELOPMENT PLAN	
No.		DATE		DESCRIPTION		BY				PREPARED BY:				OVERALL UTILITY PLAN	
				REVISIONS						Matrix DESIGN GROUP					
										AN EMPLOYEE-OWNED COMPANY					
												FOR AND ON BEHALF OF MATRIX DESIGN GROUP, INC. PROJECT No. 18.995.001			
														DESIGNED BY: ACR DRAWN BY: ACR CHECKED BY: DRK	
														SCALE HORIZ. VERT.	
														DATE ISSUED: JUNE 2018 SHEET 4 OF 11	
														DRAWING No. UT01	

Know what's below.
Call before you dig



REFERENCE DRAWINGS																																																																																																																																																																																																																																																																																																																																																																																																																																																																																																																																																																																																																																																																																																																																																																																																																																																																																																																																																																																																																																																																																																																																																																																																																																																																																																																																																																																																																				
-----------------------	--	--	--	--	--	--	--	--	--	--	--	--	--	--	--	--	--	--	--	--	--	--	--	--	--	--	--	--	--	--	--	--	--	--	--	--	--	--	--	--	--	--	--	--	--	--	--	--	--	--	--	--	--	--	--	--	--	--	--	--	--	--	--	--	--	--	--	--	--	--	--	--	--	--	--	--	--	--	--	--	--	--	--	--	--	--	--	--	--	--	--	--	--	--	--	--	--	--	--	--	--	--	--	--	--	--	--	--	--	--	--	--	--	--	--	--	--	--	--	--	--	--	--	--	--	--	--	--	--	--	--	--	--	--	--	--	--	--	--	--	--	--	--	--	--	--	--	--	--	--	--	--	--	--	--	--	--	--	--	--	--	--	--	--	--	--	--	--	--	--	--	--	--	--	--	--	--	--	--	--	--	--	--	--	--	--	--	--	--	--	--	--	--	--	--	--	--	--	--	--	--	--	--	--	--	--	--	--	--	--	--	--	--	--	--	--	--	--	--	--	--	--	--	--	--	--	--	--	--	--	--	--	--	--	--	--	--	--	--	--	--	--	--	--	--	--	--	--	--	--	--	--	--	--	--	--	--	--	--	--	--	--	--	--	--	--	--	--	--	--	--	--	--	--	--	--	--	--	--	--	--	--	--	--	--	--	--	--	--	--	--	--	--	--	--	--	--	--	--	--	--	--	--	--	--	--	--	--	--	--	--	--	--	--	--	--	--	--	--	--	--	--	--	--	--	--	--	--	--	--	--	--	--	--	--	--	--	--	--	--	--	--	--	--	--	--	--	--	--	--	--	--	--	--	--	--	--	--	--	--	--	--	--	--	--	--	--	--	--	--	--	--	--	--	--	--	--	--	--	--	--	--	--	--	--	--	--	--	--	--	--	--	--	--	--	--	--	--	--	--	--	--	--	--	--	--	--	--	--	--	--	--	--	--	--	--	--	--	--	--	--	--	--	--	--	--	--	--	--	--	--	--	--	--	--	--	--	--	--	--	--	--	--	--	--	--	--	--	--	--	--	--	--	--	--	--	--	--	--	--	--	--	--	--	--	--	--	--	--	--	--	--	--	--	--	--	--	--	--	--	--	--	--	--	--	--	--	--	--	--	--	--	--	--	--	--	--	--	--	--	--	--	--	--	--	--	--	--	--	--	--	--	--	--	--	--	--	--	--	--	--	--	--	--	--	--	--	--	--	--	--	--	--	--	--	--	--	--	--	--	--	--	--	--	--	--	--	--	--	--	--	--	--	--	--	--	--	--	--	--	--	--	--	--	--	--	--	--	--	--	--	--	--	--	--	--	--	--	--	--	--	--	--	--	--	--	--	--	--	--	--	--	--	--	--	--	--	--	--	--	--	--	--	--	--	--	--	--	--	--	--	--	--	--	--	--	--	--	--	--	--	--	--	--	--	--	--	--	--	--	--	--	--	--	--	--	--	--	--	--	--	--	--	--	--	--	--	--	--	--	--	--	--	--	--	--	--	--	--	--	--	--	--	--	--	--	--	--	--	--	--	--	--	--	--	--	--	--	--	--	--	--	--	--	--	--	--	--	--	--	--	--	--	--	--	--	--	--	--	--	--	--	--	--	--	--	--	--	--	--	--	--	--	--	--	--	--	--	--	--	--	--	--	--	--	--	--	--	--	--	--	--	--	--	--	--	--	--	--	--	--	--	--	--	--	--	--	--	--	--	--	--	--	--	--	--	--	--	--	--	--	--	--	--	--	--	--	--	--	--	--	--	--	--	--	--	--	--	--	--	--	--	--	--	--	--	--	--	--	--	--	--	--	--	--	--	--	--	--	--	--	--	--	--	--	--	--	--	--	--	--	--	--	--	--	--	--	--	--	--	--	--	--	--	--	--	--	--	--	--	--	--	--	--	--	--	--	--	--	--	--	--	--	--	--	--	--	--	--	--	--	--	--	--	--	--	--	--	--	--	--	--	--	--	--	--	--	--	--	--	--	--	--	--	--	--	--	--	--	--	--	--	--	--	--	--	--	--	--	--	--	--	--	--	--	--	--	--	--	--	--	--	--	--	--	--	--	--	--	--	--	--	--	--	--	--	--	--	--	--	--	--	--	--	--	--	--	--	--	--	--	--	--	--	--	--	--	--	--	--	--	--	--	--	--	--	--	--	--	--	--	--	--	--	--	--	--	--	--	--	--	--	--	--	--	--	--	--	--	--	--	--	--	--	--	--	--	--	--	--	--	--	--	--	--	--	--	--	--	--	--	--	--	--	--	--	--	--	--	--	--	--	--	--	--	--	--	--	--	--	--	--	--	--	--	--	--	--	--	--	--	--	--	--	--	--	--	--	--	--	--	--	--	--	--	--	--	--	--	--	--	--	--	--	--	--	--	--	--	--	--	--	--	--	--	--	--	--	--	--	--	--	--	--	--	--	--	--	--	--	--	--	--	--	--	--	--	--	--	--	--	--	--	--	--	--	--	--	--	--	--	--	--	--	--	--	--	--	--	--	--	--	--	--	--	--	--	--	--	--	--	--	--	--	--	--	--	--	--	--	--	--	--	--	--	--	--	--	--	--	--	--	--	--	--	--	--	--	--	--	--	--	--	--	--	--	--	--	--	--	--	--	--	--	--	--	--	--	--	--	--	--	--	--	--	--	--	--	--	--	--	--	--	--	--	--	--	--	--	--	--	--	--	--	--	--	--	--	--	--	--	--	--	--	--	--	--	--	--	--	--	--	--	--	--	--	--	--	--	--	--	--	--	--	--	--	--	--	--	--	--	--	--	--	--	--	--	--	--	--	--	--	--	--	--	--	--	--	--	--	--	--	--	--	--	--	--	--	--	--	--	--	--	--	--	--	--	--	--	--	--	--	--	--	--	--	--	--	--	--	--	--	--	--	--	--	--	--	--	--	--	--	--	--	--	--	--	--	--	--	--	--	--	--	--	--	--	--	--	--	--	--	--	--	--	--	--	--	--	--	--	--	--	--	--	--	--	--	--	--	--	--	--	--	--	--	--	--	--	--	--	--	--	--	--	--	--	--	--	--	--	--	--	--	--	--	--	--	--	--	--	--	--	--	--	--	--	--	--	--	--	--	--	--



2 WEST. EL.
SK2.0 1/16" = 1'-0"



3 EAST. EL.
SK2.0 1/16" = 1'-0"



1 NORTH EL.
SK2.0 1/16" = 1'-0"



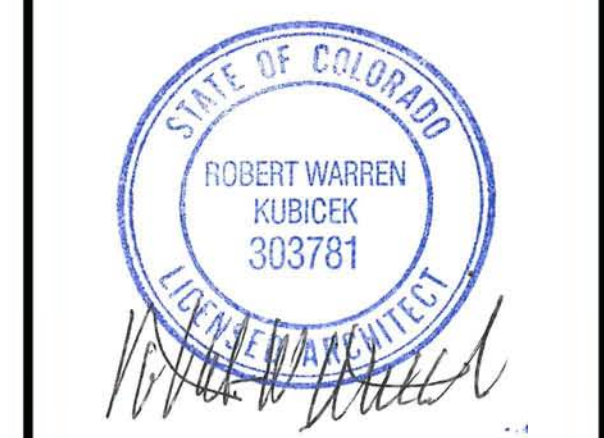
4 SOUTH EL.
SK2.0 1/16" = 1'-0"



LIBERTY TREE
ACADEMY



DESIGN
APPROVAL



carhuff+cueva
architects, llc

3149 e prince rd #151
tucson, arizona 85716
phone 520.577.4560
www.cca-az.com

NEW SCHOOL CAMPUS FOR:

LIBERTY TREE ACADEMY

8579 EASTONVILLE RD,
PEYTON, CO 80831

CONSTRUCTION DOCUMENTS

REVISION	DATE	DESCRIPTION	BY

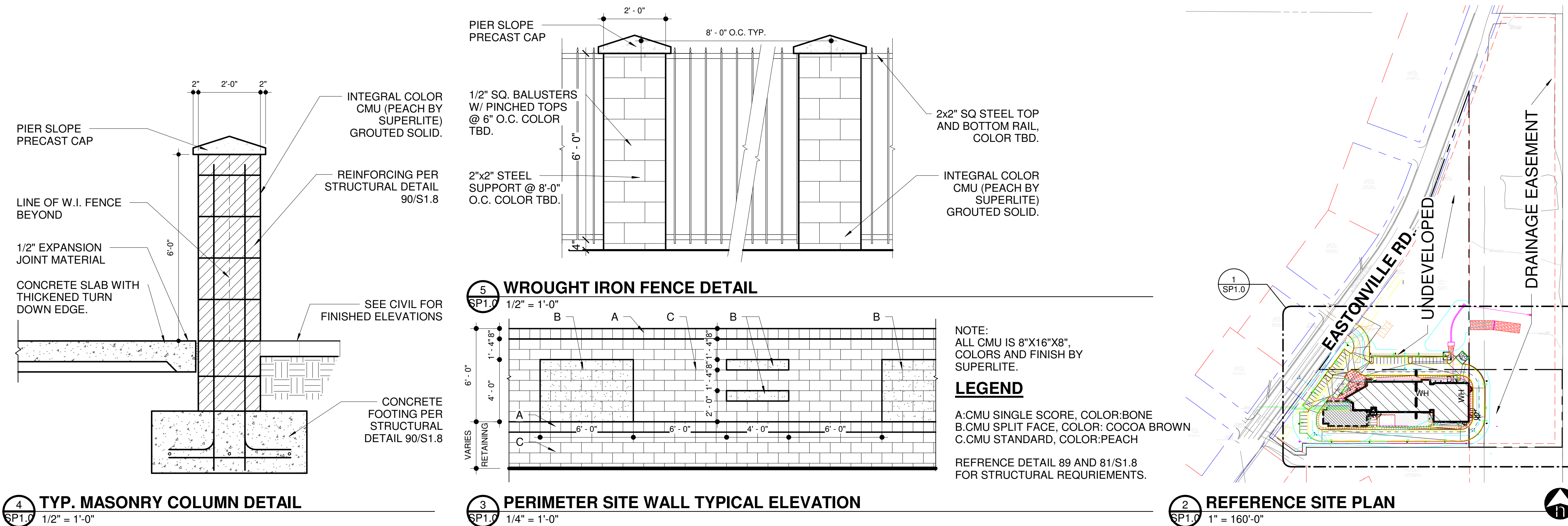
PROJECT NO. P18-8579

DATE MAY 8, 2018

SCALE 1/16" = 1'-0" DRAWN BY PD

DRAWING TITLE PRESENTATION ELEVATIONS

DRAWING NUMBER SK2.0



PROJECT DATA

PARCEL #: 4232302001
ZONING: RR-5

MAXIMUM LOT COVERAGE 25%
MAXIMUM HEIGHT 30'
SETBACKS 25' FRONT, REAR, SIDE.

BUILDING INFORMATION
GROSS FLOOR AREA: 39,376 S.F.
NUMBER OF STORIES: 2
MAXIMUM HEIGHT: 30'-0"

PARKING DATA

PARKING REQUIRED PER TABLE 6-2
ELEMENTARY OR JR HIGH:
2 SPACES PER CLASSROOM

REQUIRED PARKING SIZE 9X18 2' OVERHANG

NEW PARKING REQUIRED PER TABLE 6-2:
(2 SPACES/CLASS ROOM) 22 C.R. X 2 = 44 STALLS
NEW PARKING PROVIDED: 50 STALLS
REQUIRED ADA PARKING SPACES: 2 STALLS
ADA PARKING SPACES PROVIDED: 2 STALLS

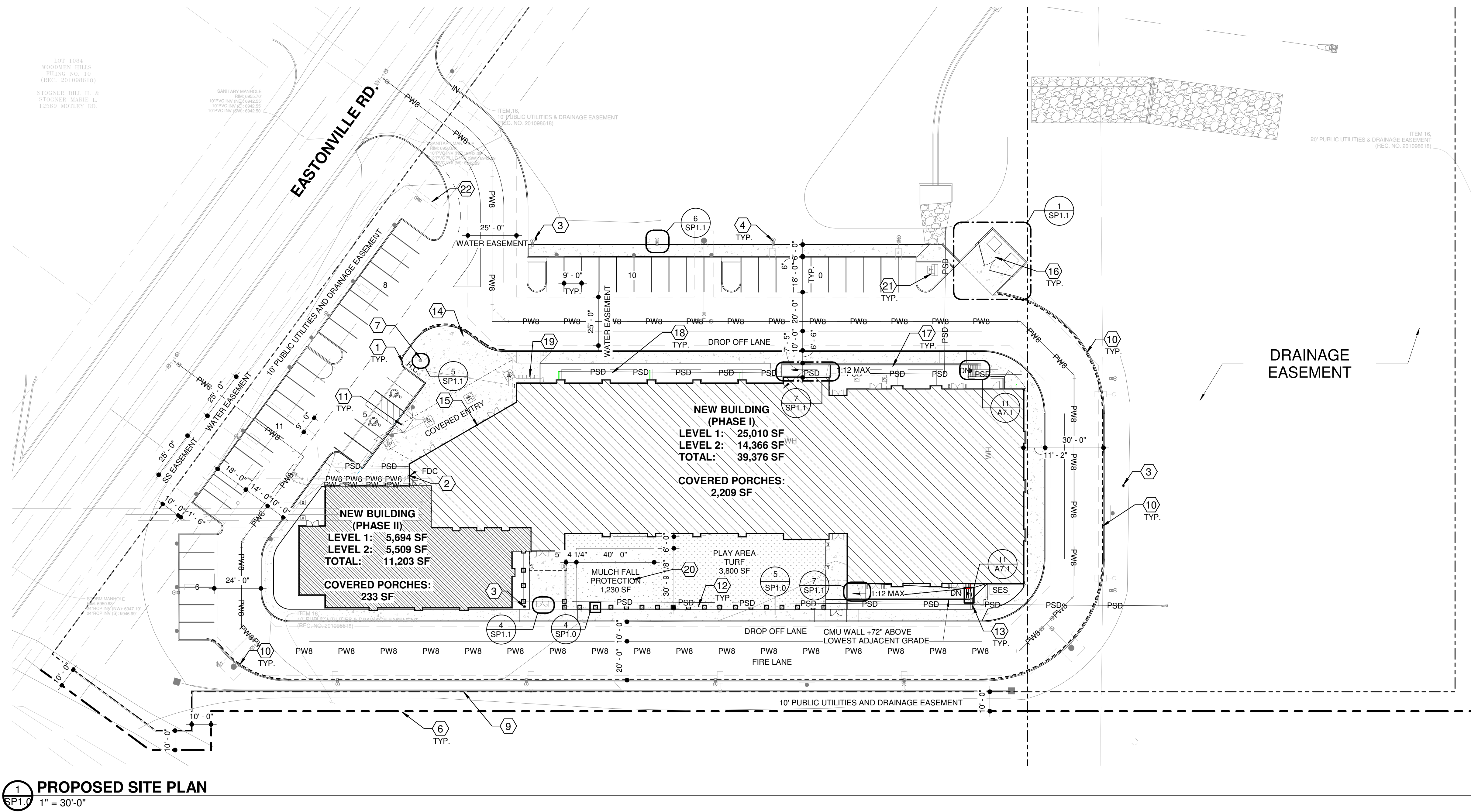
ON SITE QUEUE LENGTH: 1,240 L.F.

BIKE PARKING

REQUIRED BIKE PARKING 5% OF VEHICLE
PARKING SPACES (49 X .05): 3 SPACES
PROVIDED BIKE PARKING: 5 SPACES

SITE PLAN KEYNOTES:

1. ACCESSIBLE PARKING SPACE PER CIVIL DRAWINGS.
2. FIRE RISER ENTRANCE. PROVIDE FIRE RISER ROOM SIGNAGE.
3. FIRE HYDRANT PER CIVIL DRAWINGS.
4. SITE LIGHTING FIXTURES, SEE ELECTRICAL DRAWINGS.
5. WATER METER PER CIVIL PLANS.
6. PROPERTY LINE.
7. 25' HIGH FLAG POLE.
8. BACKFLOW PREVENTER PER CIVIL PLANS.
9. INTEGRAL COLOR CMU SCREEN WALL OVER RETAINING WALL. SEE TYPICAL SITE WALL DETAIL.
10. CONCRETE CURB PER DETAILS. PAINTED RED CURB WITH "NO PARKING FIRE LANE" IN 4" WHITE LETTERS ON FACE OF THE CURB SPACED 80" ON CENTER FOR FIRE LANE DESIGNATION AS INDICATED WITH DASHED LINE.
11. CONCRETE RAMP PER CIVIL DRAWINGS
12. CMU PILLAR AND WROUGHT IRON FENCE PER DETAIL.
13. W.I. GATE WITH KEY F.O.B. AND PANIC HARDWARE PER DETAIL.
14. SCORED CONCRETE WITH CONTROL JOINTS 6'-0" O.C., PATTERN PER PLAN.
15. PROVIDE FLUSH-MOUNTED KNOX BOX, MODEL NO. 3200 SERIES @ +6'-0" A.F.F. ORDER AND INSTALL PER LOCAL FIRE DEPARTMENT REQUIREMENTS
16. TRASH ENCLOSURE GATE PER DETAIL. PROVIDE 6.33" STEEL BOLLARDS 60" ABOVE GRADE, SPACED PER DETAIL. FULL GROUT AND CROWN TOP PRIMED AND PAINTED LIGHT TAN.
17. DECOMPOSED GRANITE PER LANDSCAPE PLANS.
18. UNDERGROUND STORM DRAIN PER CIVIL DRAWINGS.
19. CYCLOOPS 2170-5 BICYCLE PARKING
20. PLAY STRUCTURE BY OWNER GC TO COORDINATE INSTALLATION.
21. ELECTRICAL TRANSFORMER.
22. MONUMENT SIGN LOCATION, (UNDER SEPARATE PERMIT AND SUBMITTAL)



LIBERTY TREE ACADEMY

RKAA ARCHITECTS, INC

DESIGN APPROVAL

DATE APPROVED:

STATE OF COLORADO

ROBERT WARREN KUBICEK 303781

LIBERTY TREE ACADEMY

carhuff+cueva architects, llc

3149 e prince rd #151
tucson, arizona 85716
phone 520.577.4560
www.cca-az.com

NEW SCHOOL CAMPUS FOR:

LIBERTY TREE ACADEMY

8579 EASTONVILLE RD,
PEYTON, CO 80831

CONSTRUCTION DOCUMENTS

REVISION	DATE	DESCRIPTION	BY

PROJECT NO. **P18-8579**

DATE **MAY 8, 2018**

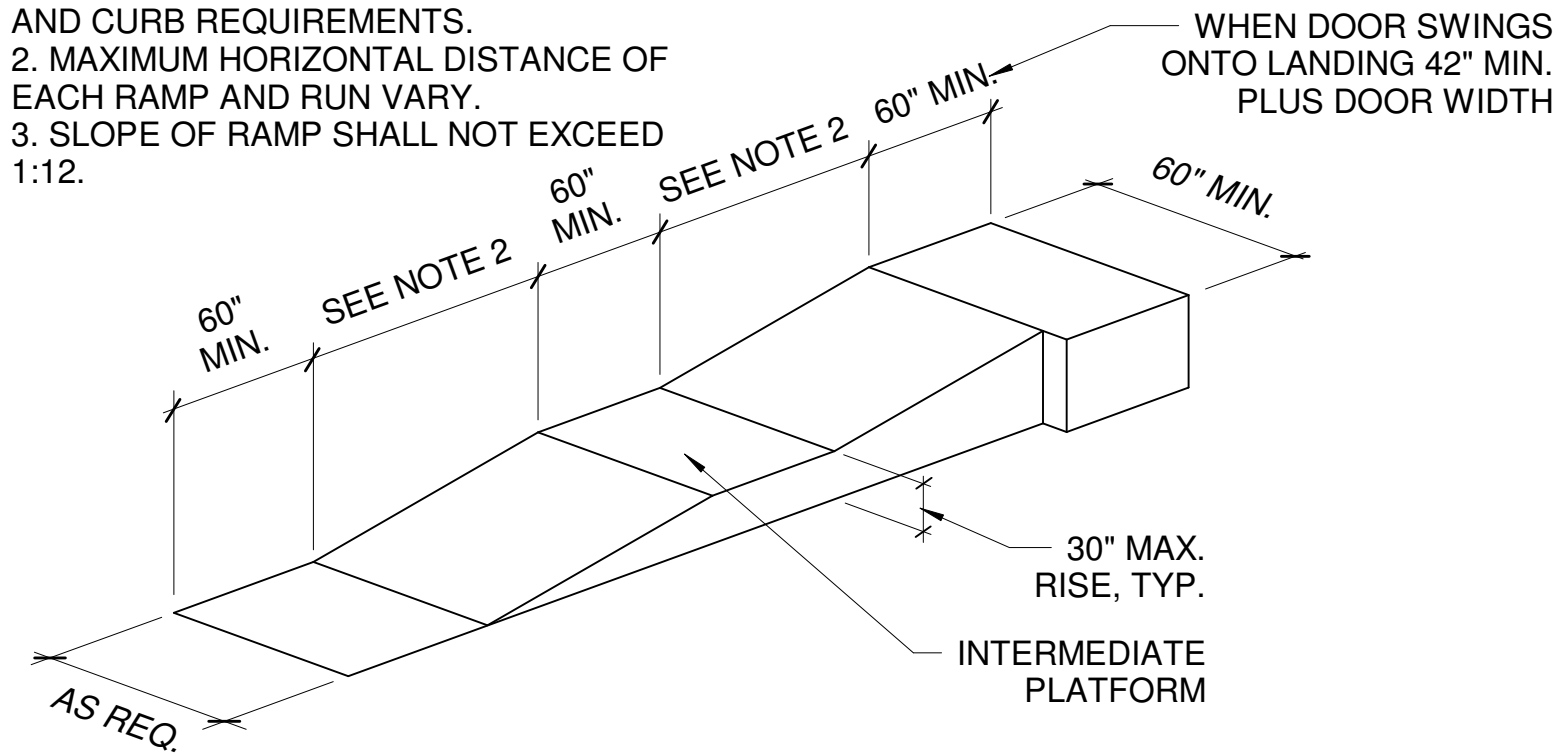
SCALE As indicated	DRAWN BY PD
---------------------------	--------------------

DRAWING TITLE **ARCHITECTURAL SITE PLAN**

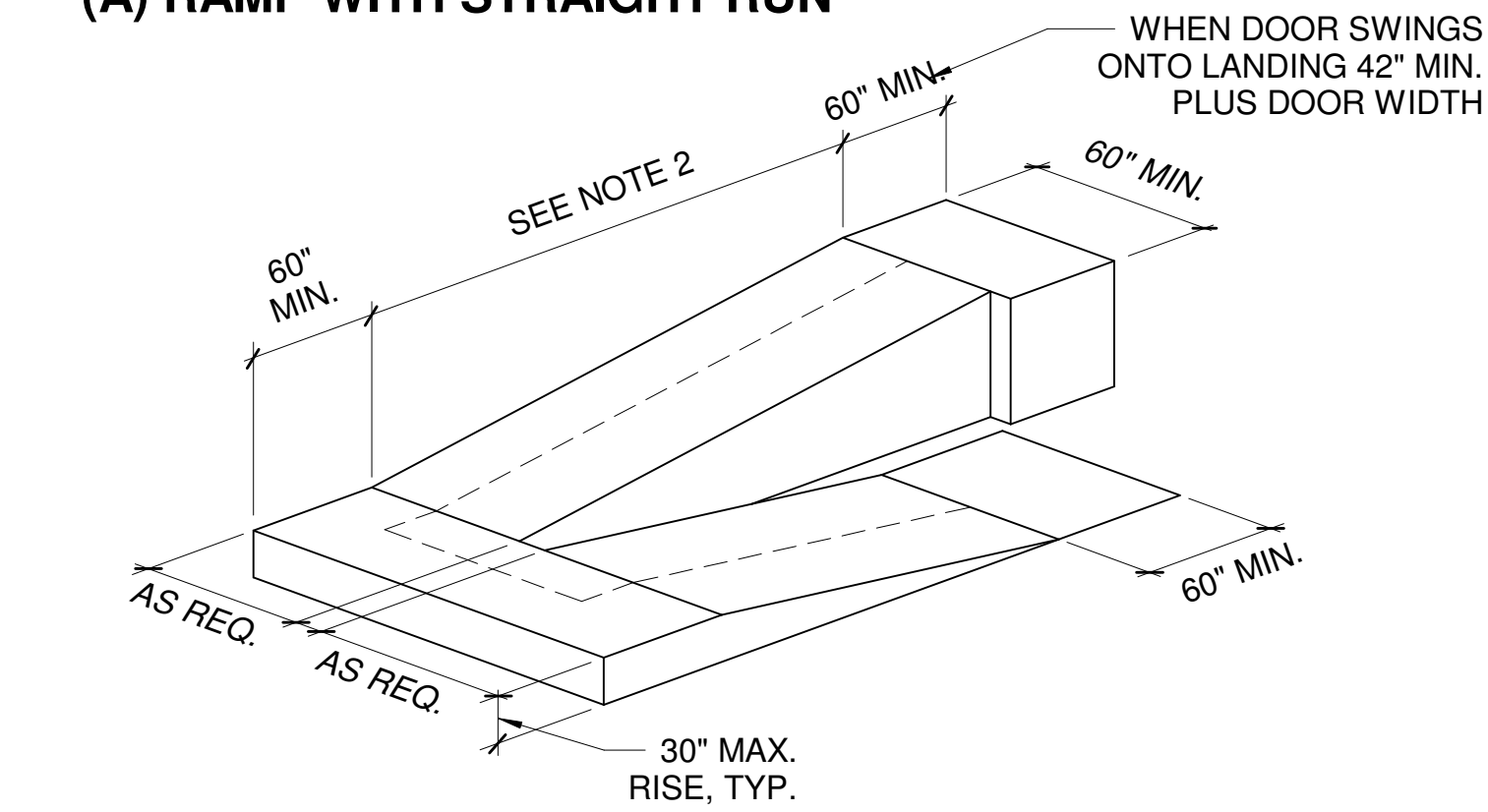
DRAWING NUMBER **SP1.0**

RAMP NOTES:

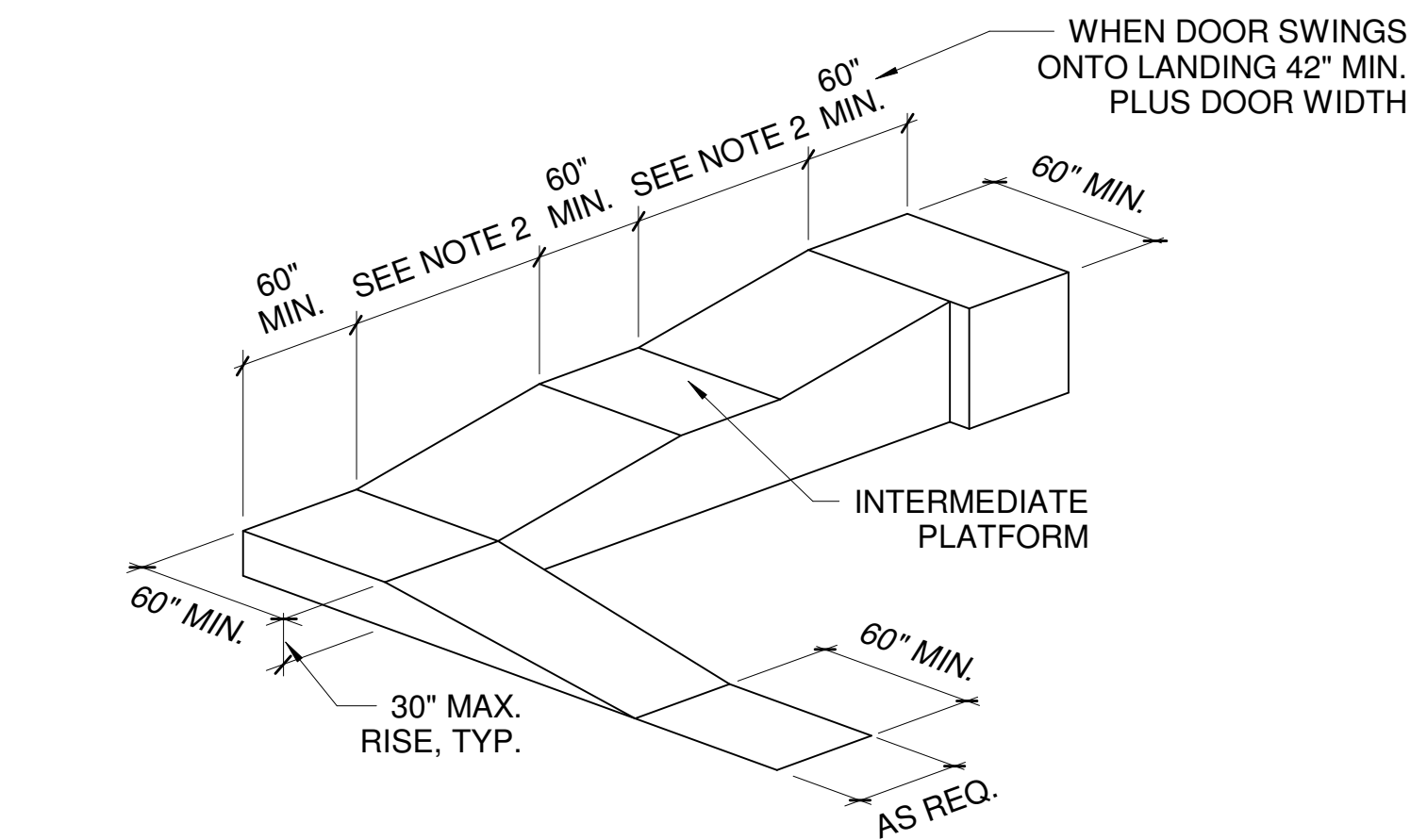
1. ALL HANDRAILS MUST MEET HANDRAIL AND CURB REQUIREMENTS.
2. MAXIMUM HORIZONTAL DISTANCE OF EACH RAMP AND RUN VARY.
3. SLOPE OF RAMP SHALL NOT EXCEED 1:12.



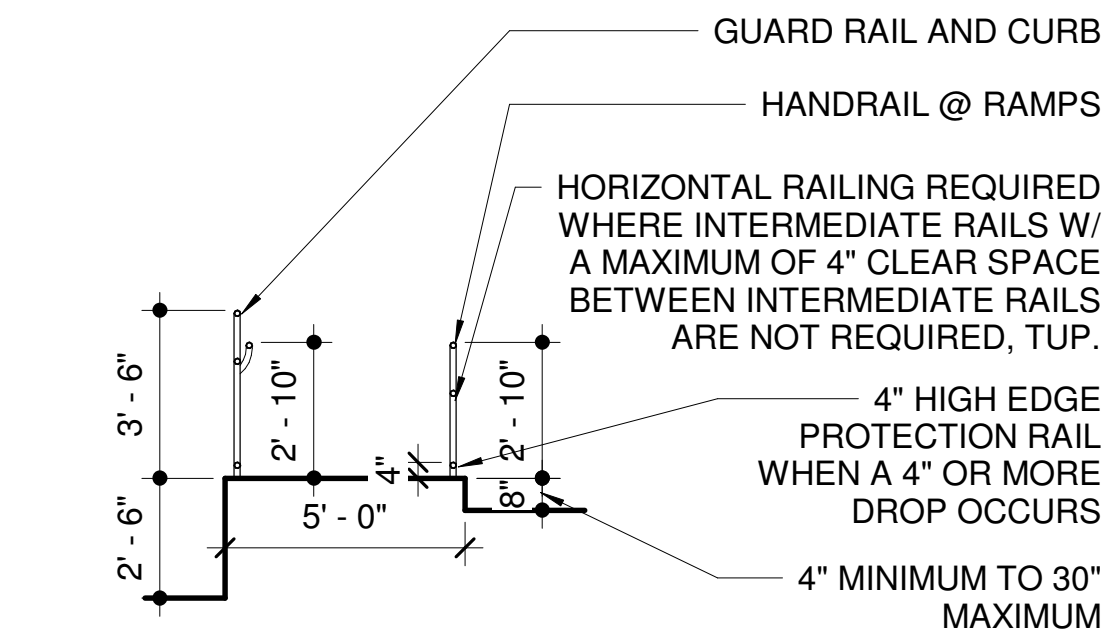
(A) RAMP WITH STRAIGHT RUN



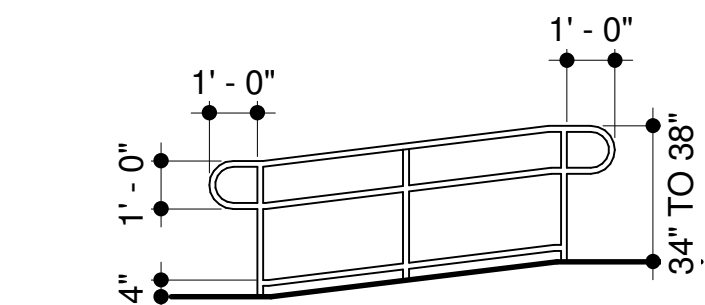
(B) RAMP WITH INTERMEDIATE SWITCHBACK PLATFORM



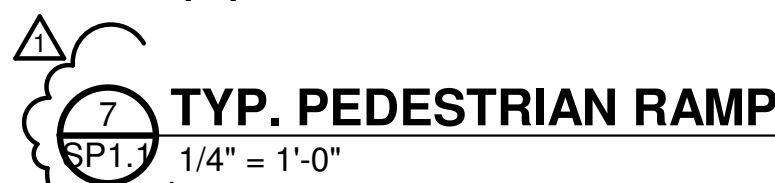
(C) RAMP WITH TURNING PLATFORM



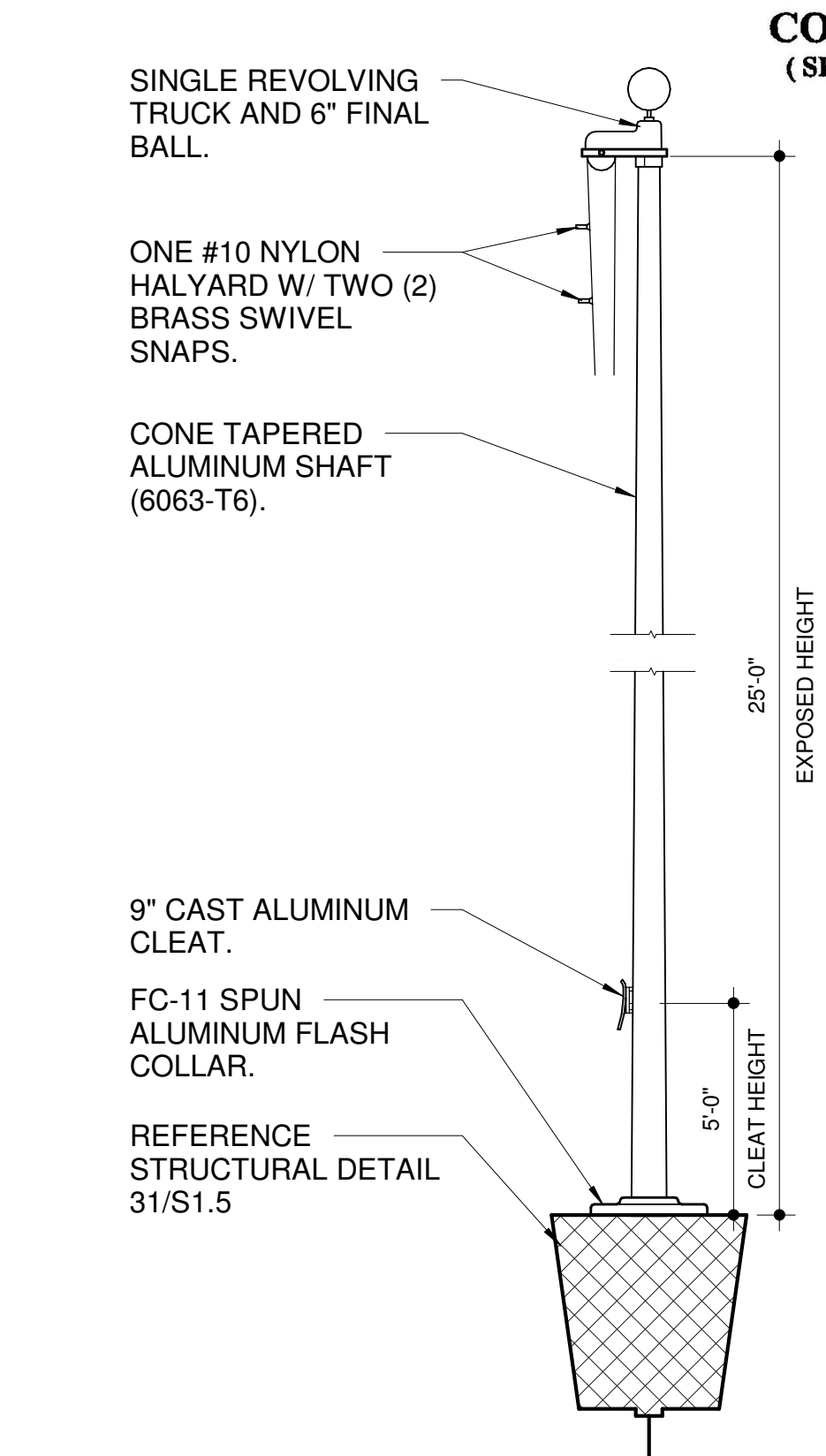
(E) RAMP SECTION



(D) RAMP ELEVATION



7 TYP. PEDESTRIAN RAMP



5 FLAG POLE DETAIL

GATE HARDWARE SET

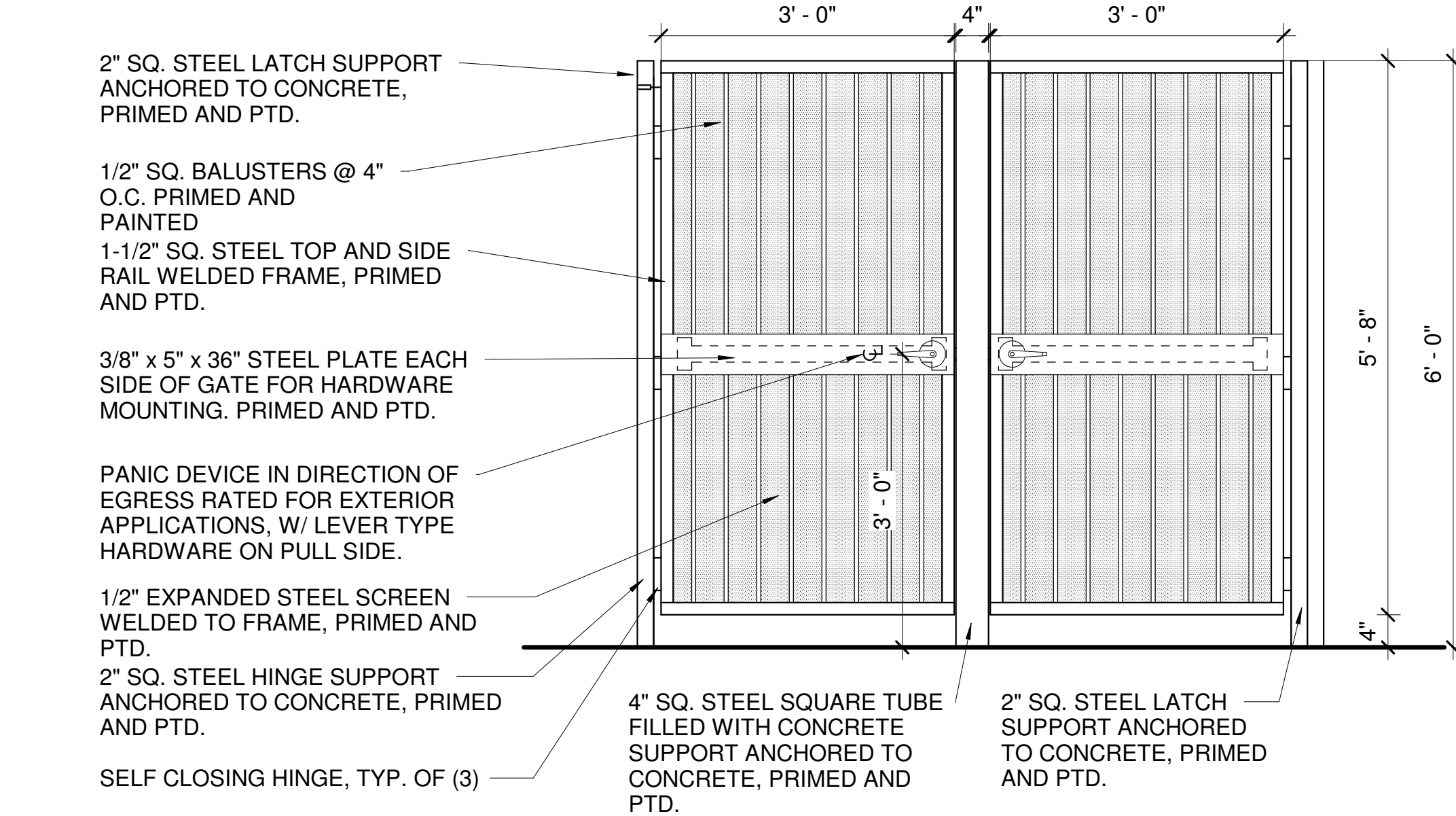
- EACH TO HAVE:
- 1 EA GATE CLOSER
 - 1 EA IC CYLINDER
 - 1 EA PANIC HARDWARE
 - 1 EA FLOOR MOUNTED DOOR STOP

PFGCS 1-(714)-994-0276
AS REQUIRED
99-L X 374L X POOL

626 FAL
626 VON

FS18L IVES

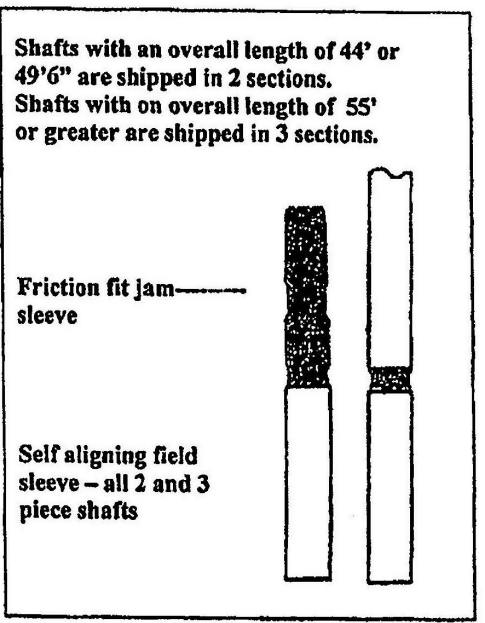
Operational Description
Free Egress at all times. Pressing Push Bar retracts latchbolts. Latchbolt retracted by lever unless locked by key. Key locks and unlocks lever. Dogging by hex key, locks down the pushbar or crossbar so the latchbolt remains retracted.



4 DOUBLE GATE DETAIL

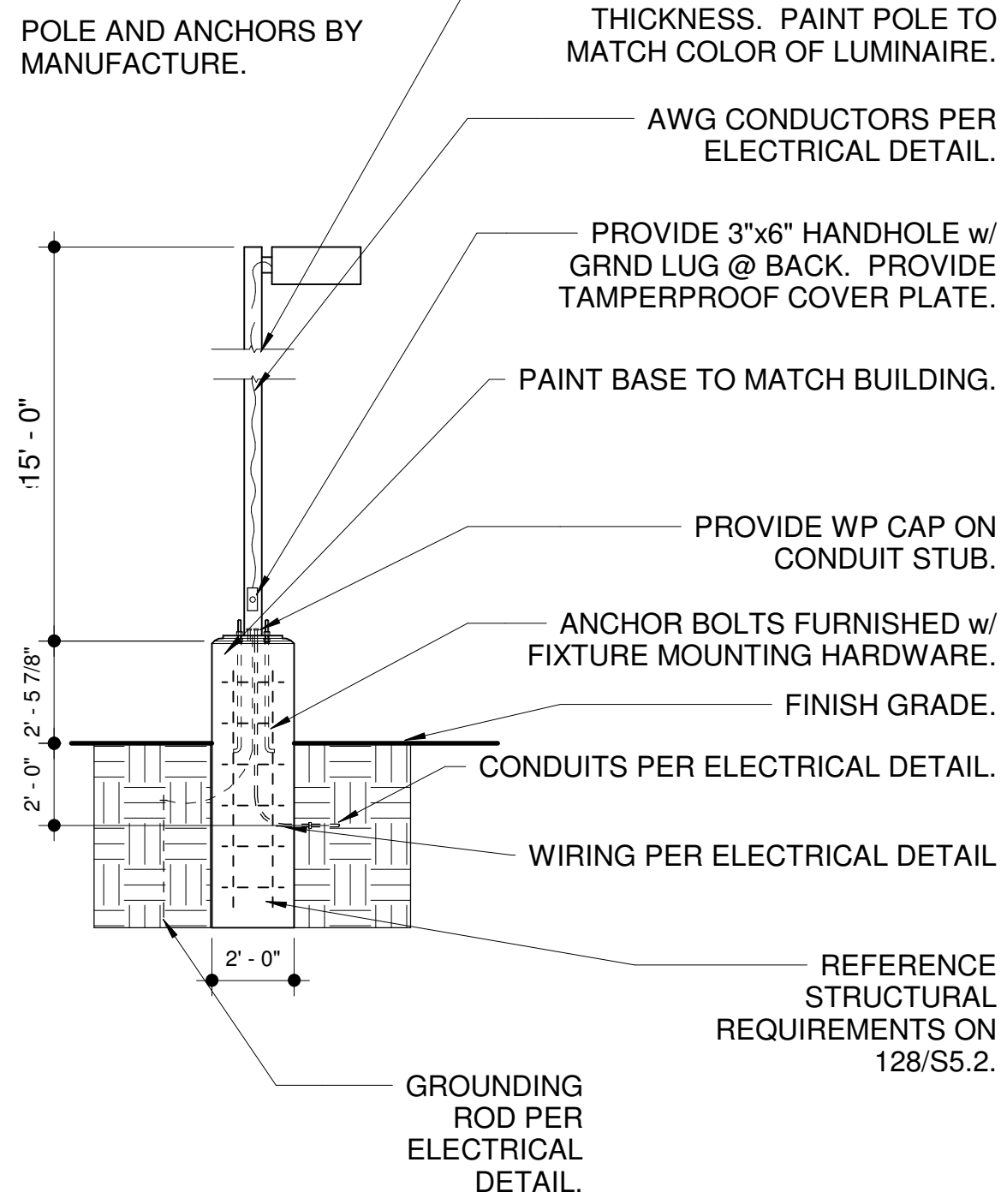
Concord Industries, Inc.

4150-A Kellway Circle, Addison, TX 75001



Ground Set Tapered Alum. Flagpole 6063-T6
Exp Ht. 25' Overall Ht. 28' Ship in 1 Sections
Butt Dia. 5.5\"/>

NOTE:
THE POLE MANUFACTURER SHALL PROVIDE A POLE BASE DESIGN FOR 100MPH WIND LOADING w/ A 1.3 GUST FACTOR.



6 LIGHT POLE DETAIL

DUMPSTER ENCLOSURE GENERAL NOTES:

1. SOIL BELOW THE WALL FOOTER AND CONCRETE PAD SHALL BE COMPACTED TO A DEPTH OF 6 INCHES AND TO A MINIMUM DRY DENSITY OF 90% IN ACCORDANCE WITH ASTM D-2922 AND D-3017, AFTER ADJUSTMENT FOR ROCK CORRECTION.

2. STEEL REINFORCEMENT SHALL BE GRADE 40.

PEDESTRIAN GATE WITH B-DECKING OVER 2x2 STEEL FRAME, PRIMED AND PTD TO MATCH BUILDING. PROVIDE LOCKING HASP AND LATCH

PIN HOLE STOP

1/2\"/>

6\"/>

(2) 6\"/>

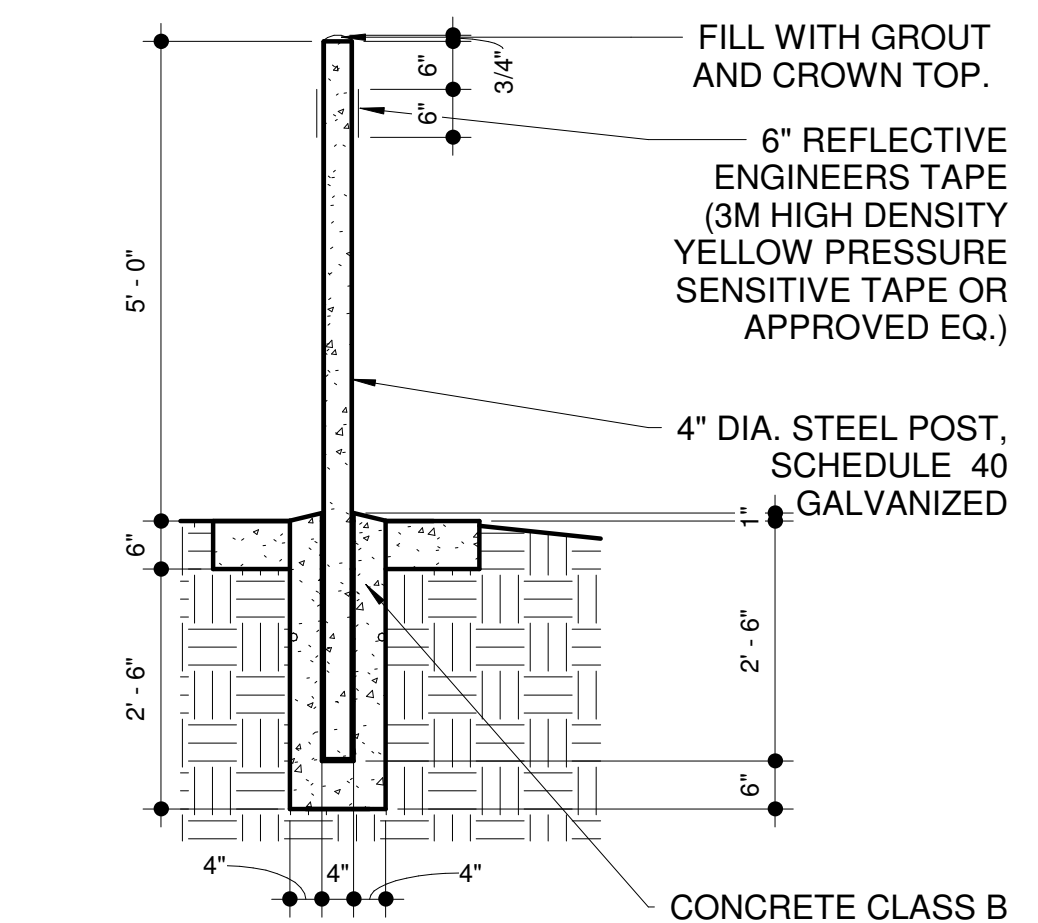
PIN HOLE STOP

8\"/>

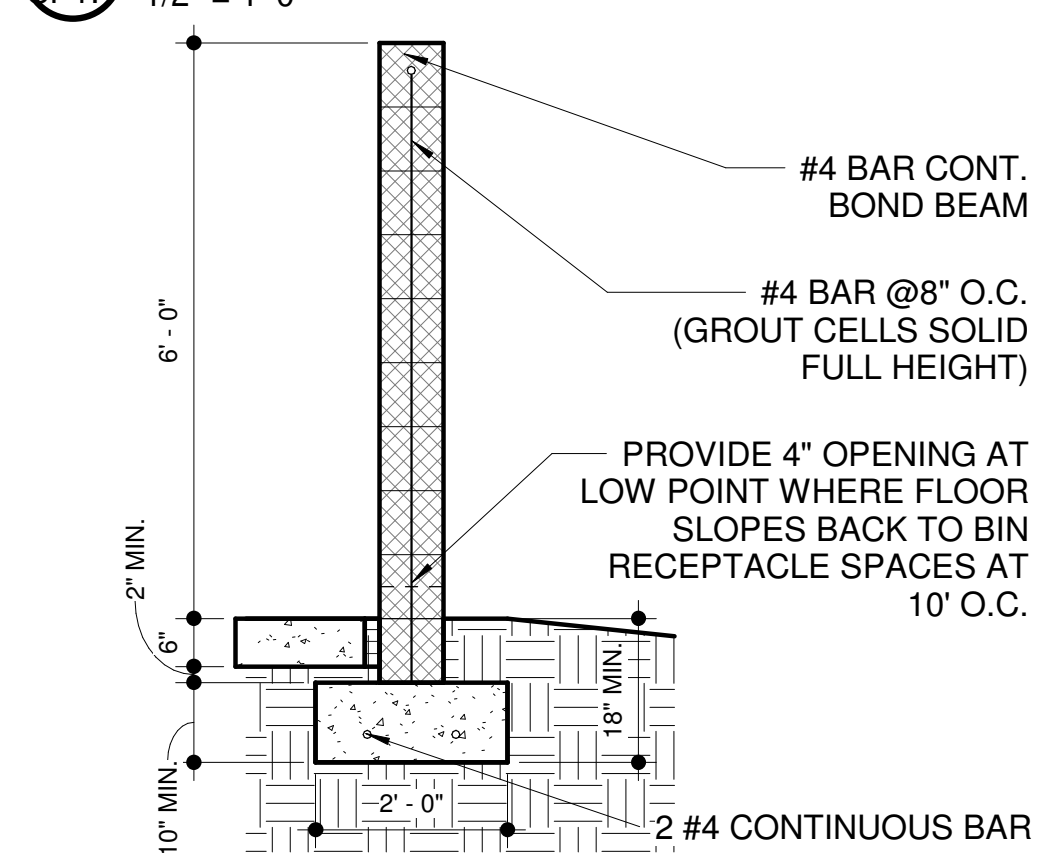
B-DECKING OVER HSS 2x2x1/4\"/>

HSS6.25X.250 CONC. FILLED BOLLARD

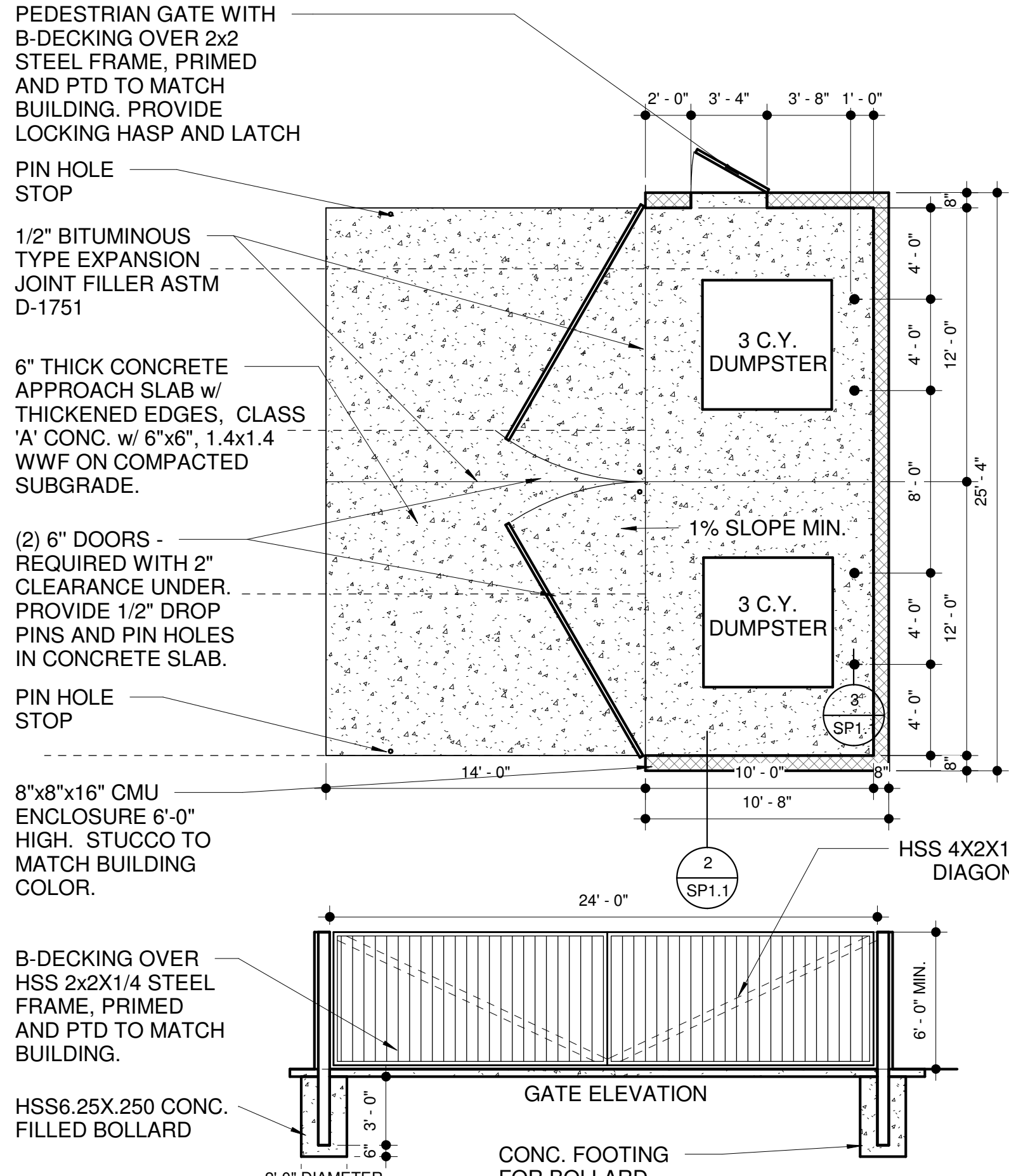
1 DUMPSTER ENCLOSURE



3 BOLLARD DETAIL



2 TRASH ENCLOSURE WALL DETAIL



2 DUMPSTER ENCLOSURE

LIBERTY TREE ACADEMY

DESIGN APPROVAL

DATE APPROVED:

carhuff+cueva architects, llc

3149 e prince rd #151
tucson, arizona 85716
phone 520.577.4560
www.cca-az.com

NEW SCHOOL CAMPUS FOR:

LIBERTY TREE ACADEMY

8579 EASTONVILLE RD,
PEYTON, CO 80831

CONSTRUCTION DOCUMENTS

REVISION	DATE	DESCRIPTION	BY
1	03-17-16	COORDINATION / REVIEW COMMENTS	

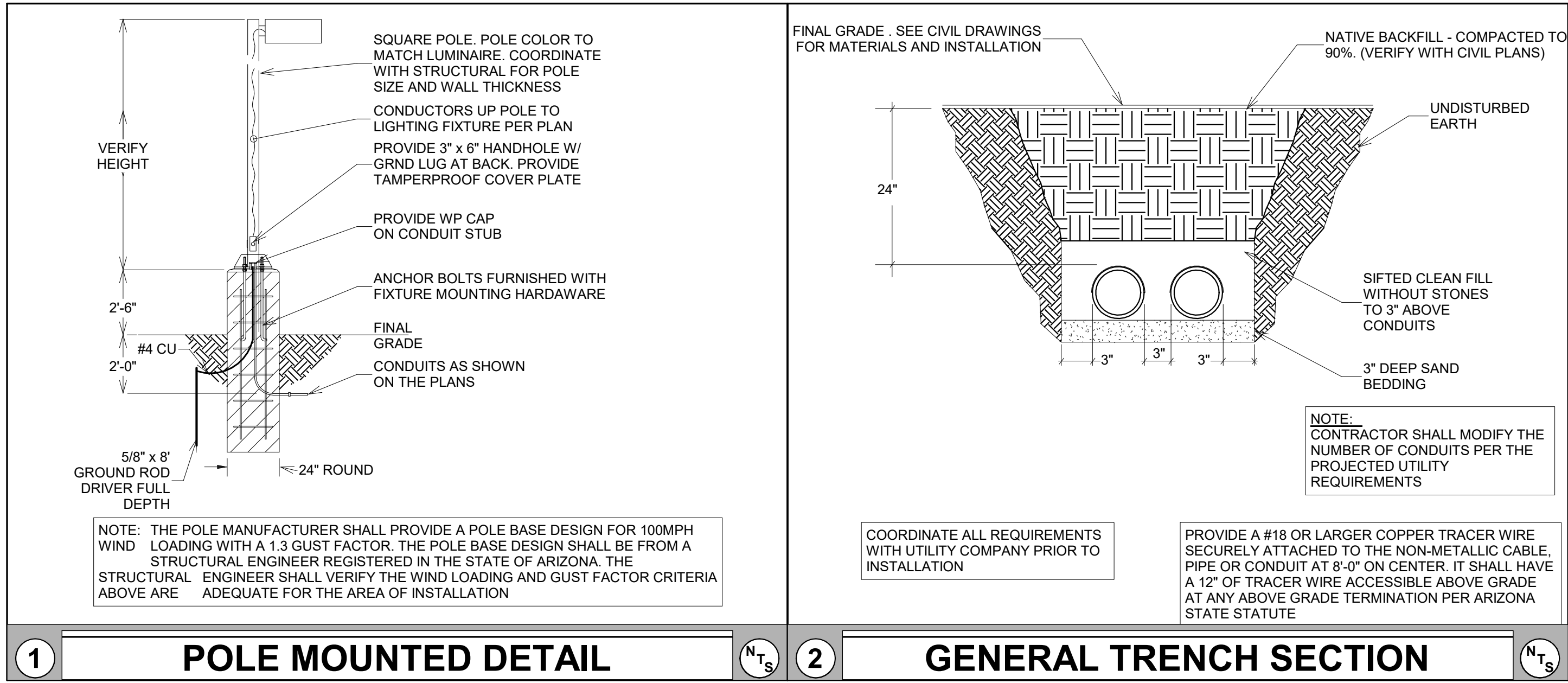
PROJECT NO. P18-8579

DATE MAY 8, 2018

SCALE As indicated DRAWN BY PD

DRAWING TITLE SITE DETAILS

DRAWING NUMBER SP1.1



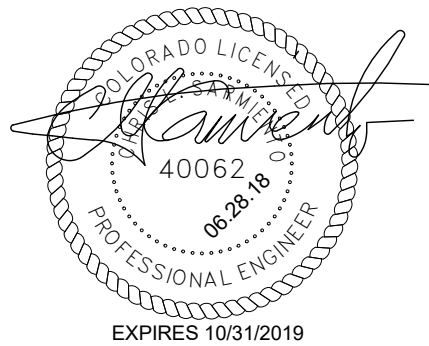
GENERAL NOTES

- A THIS ELECTRICAL UTILITIES SITE PLAN IS FOR REFERENCE ONLY. NO CONSTRUCTION IS TO BEGIN UNTIL FINAL UTILITY COMPANY PLANS ARE RECEIVED. UTILITY COMPANY DESIGN IS NOT AVAILABLE AT THIS TIME. ADDITIONAL WORK WILL BE REQUIRED.
- B ALL WORK SHALL BE PER UTILITY COMPANY CONSTRUCTION STANDARDS AND SPECIFICATIONS. PROVIDE CONDUIT SPACERS THROUGHOUT AND CONCRETE ENCASEMENT WHERE FEEDERS PASS UNDER DRIVEWAYS AND OR PARKING LOTS.
- C ALL TRANSFORMER BOXES, METER PANELS, ELECTRICAL EQUIPMENT AND MISCELLANEOUS UTILITY EQUIPMENT SHALL BE PAINTED TO MATCH ADJACENT BUILDING COLORS WHERE SCREENING IS NOT APPLICABLE. COORDINATE WITH UTILITY PRIOR TO PAINTING.
- D SEE SHEET E0.1 GENERAL NOTES FOR ADDITIONAL UTILITY COORDINATION NOTES.
- E ALL EXTERNAL LIGHTING SHALL BE LOCATED AND DESIGNED TO PREVENT RAYS FROM BEING DIRECTED OFF OF THE PROPERTY UPON WHICH THE LIGHTING IS LOCATED.
- F THE CONTRACTOR SHALL PROGRAM THE LIGHTING CONTROLLER AS PER THE LIGHTING DIAGRAM PRIOR TO CALLING THE CITY FOR THE INSPECTION.
- G THE CONTRACTOR IS TO SCHEDULE A NIGHT TIME INSPECTION OF THE ENERGIZED LIGHTING, TO ATTEND THIS INSPECTION AND TO CORRECT ALL ITEMS IDENTIFIED DURING INSPECTION PRIOR TO ISSUING THE FINAL CERTIFICATE OF OCCUPANCY.

KEYED NOTES

- 1 PROPOSED LOCATION OF UTILITY TRANSFORMER. ELECTRICAL CONTRACTOR SHALL PROVIDE CONCRETE PAD PER UTILITY COMPANY REQUIREMENTS. COORDINATE WITH UTILITY COMPANY FOR EXACT REQUIREMENTS AND LOCATION. MAINTAIN MINIMUM CLEARANCE IN FRONT, SIDES AND BACK OF UTILITY TRANSFORMER PER UTILITY REQUIREMENTS.
- 2 PROVIDE SECONDARY CONDUIT WITH MULETAPE FROM NEW UTILITY COMPANY TRANSFORMER TO S.E.S. UTILITY PULL SECTION. COORDINATE WITH UTILITY COMPANY FOR EXACT QUANTITY, ROUTING AND REQUIREMENTS. TRENCHING AND BACKFILL BY ELECTRICAL CONTRACTOR AS REQUIRED BY THE UTILITY. VERIFY EXACT ROUTING, DISTANCE AND P.O.C. WITH UTILITY PRIOR TO DIGGING.
- 3 PROVIDE WEATHER PROOF J-BOX AT GATE FOR CARD READER. VERIFY MOUNTING AND LOCATION WITH OWNER PRIOR TO INSTALLATION.
- 4 PROVIDE (2) 4" UG CONDUITS STUB-UPS WITH PULL STRING FOR FUTURE PHASE 2 ADDITION, FROM SES TO FUTURE BUILDING ELECTRICAL ROOM LOCATION. VERIFY EXACT ROUTING, DISTANCE, AND STUB-UP WITH OWNER PRIOR TO DIGGING.
- 5 PROVIDE WP J-BOX FOR MONUMENT SIGN LIGHTING. COORDINATE EXACT LOCATION PRIOR TO ROUGH-IN.
- 6 ROUTE LIGHTING HOME RUN THROUGH LIGHTING CONTROL PANEL OR TIME CLOCK AS REQUIRED FOR CONTROL.
- 7 PROVIDE (2) 4" CONDUIT WITH PULLWIRE TO TEL/CO/CATV POINT OF CONNECTION. COORDINATE WITH UTILITY COMPANY FOR EXACT ROUTING AND REQUIREMENTS. PROVIDE PULL BOXES AS REQUIRED.

**LIBERTY TREE
ACADEMY**



**carhuff+cueva
architects, llc**

3149 e prince rd #151
tucson, arizona 85716
phone 520.577.4560
www.cca-az.com

NEW SCHOOL CAMPUS FOR:

LIBERTY TREE ACADEMY

8579 EASTONVILLE RD,
PEYTON, CO 80831

CONSTRUCTION DOCUMENTS

REVISION	DATE	DESCRIPTION	BY

PROJECT NO.
18001

DATE
JUNE 27, 2018

SCALE
As indicated

DRAWN BY
Author

DRAWING TITLE
ELECTRICAL SITE PLAN

DRAWING NUMBER
E1.1

6 ELECTRICAL SITE PLAN

SCALE: 1" = 40'-0"



ASEIENGINEERING

2410 W. Royal Palm Rd., Suite A, Phoenix, AZ 8502
www.aseiengineering.com or 602.287.0300 f. 602.287.0600
THESE DRAWINGS AND ASSOCIATED DOCUMENTATION CONTAIN INFORMATION, DESIGNS, CONCEPTS, AND DATA THAT ARE THE SOLE PROPERTY OF ASEI ENGINEERING, INC. THIS INFORMATION MAY NOT BE USED FOR ANY PURPOSE OTHER THAN THAT ORIGINALLY INTENDED WITHOUT THE EXPRESSED WRITTEN CONSENT AND PERMISSION OF THE ENGINEER AND ASEI ENGINEERING, INC.

DFT: ME/SR
DSN: ME/SR
JOB NO:
180790
CHK: CLS

0/28/2018 5:46:17 PM

GENERAL NOTES

1 ALL EXTERNAL LIGHTING SHALL BE LOCATED AND DESIGNED TO PREVENT RAYS FROM BEING DIRECTED OFF OF THE PROPERTY UPON WHICH THE LIGHTING IS LOCATED.

LIBERTY TREE
ACADEMY



carhuff+cueva
architects, llc

3149 e prince rd #151
tucson, arizona 85716
phone 520.577.4560
www.cca-az.com
© carhuff + cueva architects, llc 2015 all rights reserved

NEW SCHOOL CAMPUS FOR:

LIBERTY TREE ACADEMY

8579 EASTONVILLE RD,
PEYTON, CO 80831

CONSTRUCTION DOCUMENTS

REVISION	DATE	DESCRIPTION	BY
1	06.27.18	City Comments	

PROJECT NO. 18001

DATE JUNE 27, 2018

SCALE 1" = 40'-0" DRAWN BY Author

DRAWING TITLE
ELECTRICAL SITE PHOTOMETRIC
CALCULATIONS

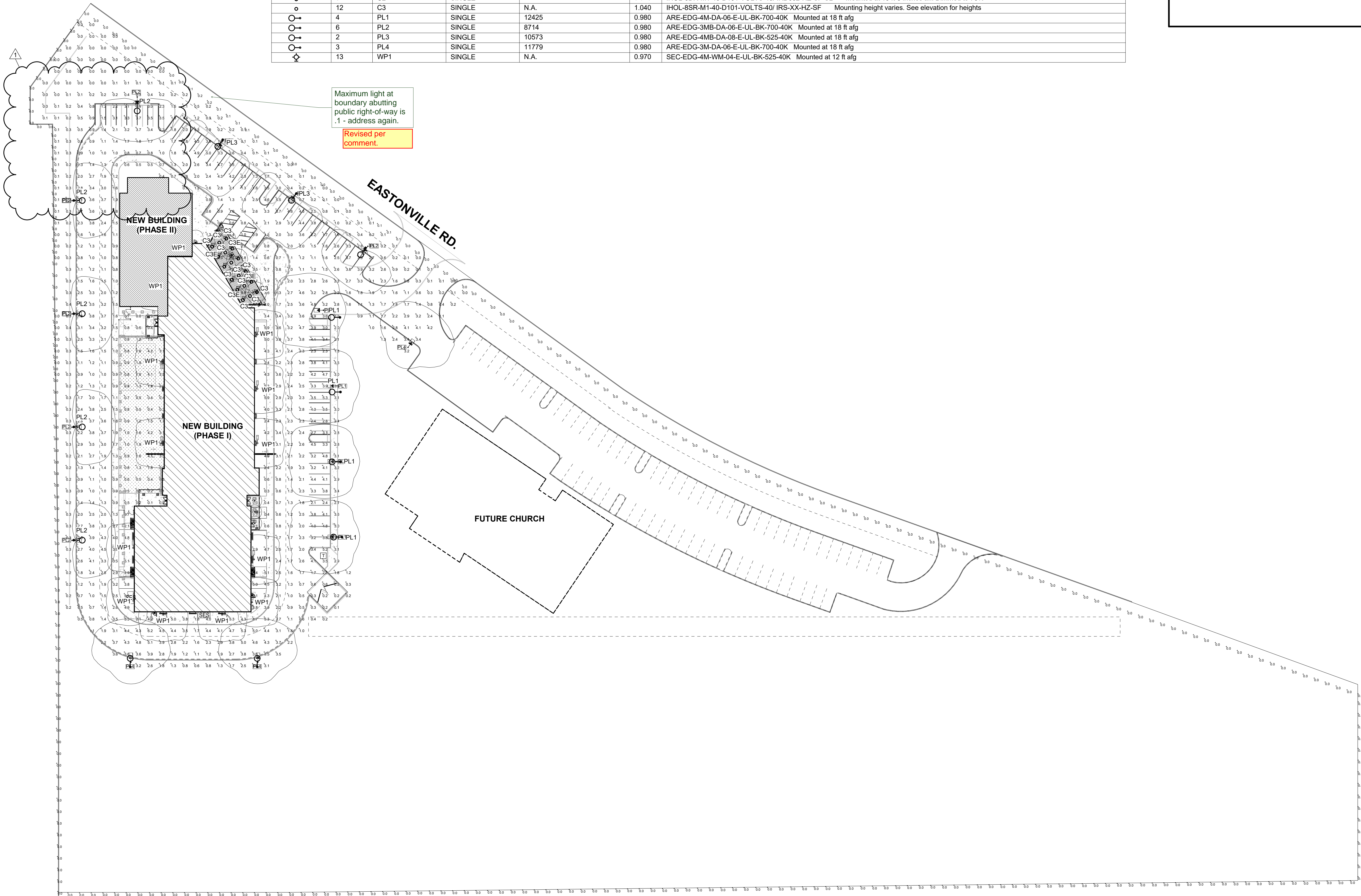
DRAWING NUMBER
E1.2

WWL Calculation Summary							
Label	CalcType	Units	Avg	Max	Min	Avg/Min	Max/Min
Grade	Illuminance	Fc	2.03	9.4	0.0	N.A.	N.A.
Spill at property line	Illuminance	Fc	0.00	0.2	0.0	N.A.	N.A.

WWL Luminaire Schedule							
Symbol	Qty	Label	Arrangement	Total Lamp Lumens	LLF	Description	
○	3	C2	SINGLE	N.A.	0.940	IHOL-6DR-M1-40-D101-VOLTS-40/ IRD602-HZ-SF-SL Mounted at 10 ft-3 inches aff. Dimmed to 70%	
○	12	C3	SINGLE	N.A.	1.040	IHOL-8SR-M1-40-D101-VOLTS-40/ IRS-XX-HZ-SF Mounting height varies. See elevation for heights	
○→	4	PL1	SINGLE	12425	0.980	ARE-EDG-4M-DA-06-E-UL-BK-700-40K Mounted at 18 ft afg	
○→	6	PL2	SINGLE	8714	0.980	ARE-EDG-3MB-DA-06-E-UL-BK-700-40K Mounted at 18 ft afg	
○→	2	PL3	SINGLE	10573	0.980	ARE-EDG-4MB-DA-06-E-UL-BK-525-40K Mounted at 18 ft afg	
○→	3	PL4	SINGLE	11779	0.980	ARE-EDG-3M-DA-06-E-UL-BK-700-40K Mounted at 18 ft afg	
⊕	13	WP1	SINGLE	N.A.	0.970	SEC-EDG-4M-WM-04-E-UL-BK-525-40K Mounted at 12 ft afg	

Maximum light at
boundary abutting
public right-of-way is
.1 - address again.

Revised per
comment.



Markup Summary

dsdkendall (4)

Do not include lighting plan and other documents in this submittal, upload lighting plan to the lighting plan spot, etc

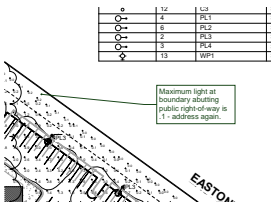
Subject: Text Box
Page Label: [1] TS01 TS01
Author: dsdkendall
Date: 7/26/2018 11:53:19 AM
Color: █

Do not include lighting plan and other documents in this submittal, upload lighting plan to the lighting plan spot, etc

INDEX OF SHEETS

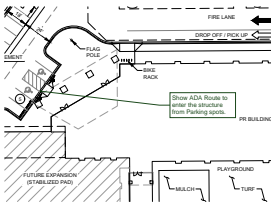
3/13/2017

CUECT



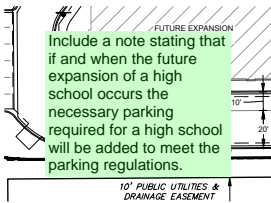
Subject: Callout
Page Label: [10] E1.2
Author: dsdkendall
Date: 7/26/2018 11:53:22 AM
Color: █

Maximum light at boundary abutting public right-of-way is .1 - address again.



Subject: Callout
Page Label: [2] SP01 SP01
Author: dsdkendall
Date: 7/26/2018 11:53:23 AM
Color: █

Show ADA Route to enter the structure from Parking spots.



Subject: Text Box
Page Label: [2] SP01 SP01
Author: dsdkendall
Date: 7/26/2018 12:36:48 PM
Color: █

Include a note stating that if and when the future expansion of a high school occurs the necessary parking required for a high school will be added to meet the parking regulations.