

LIBERTY TREE ACADEMY CONSTRUCTION DOCUMENTS

TOWN OF PEYTON, EL PASO COUNTY

PRELIMINARY DESIGN

MAY 2018



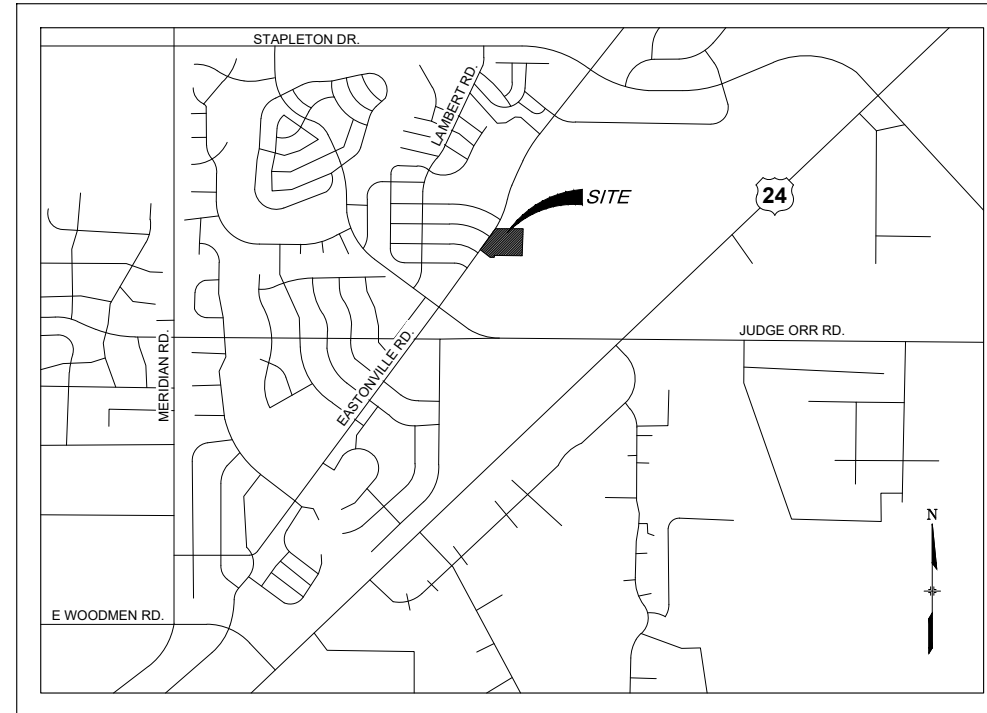
Know what's below.
Call before you dig.

Delete/revise
with final.

INDEX OF SHEETS

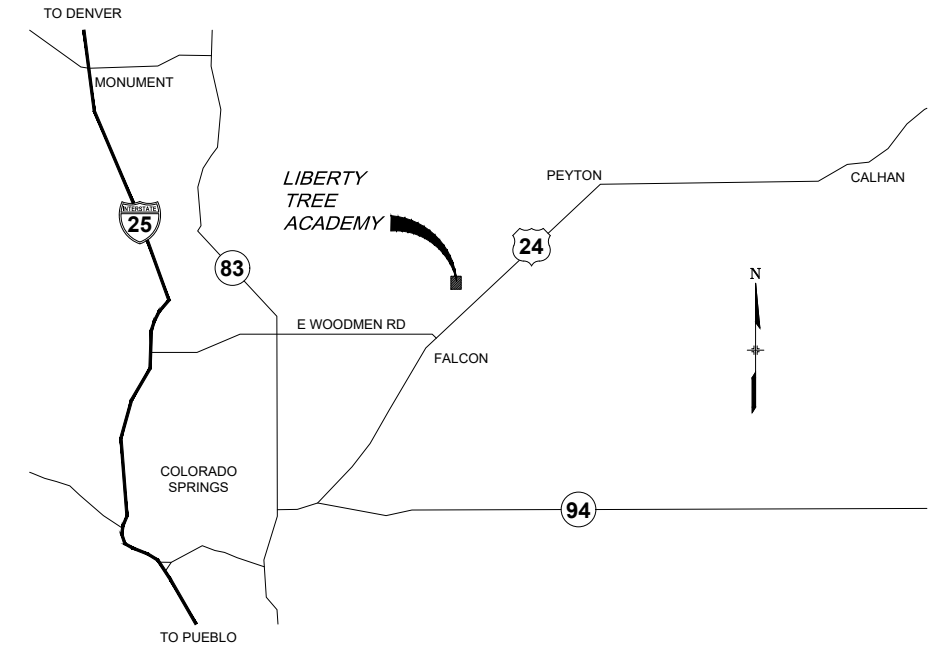
| DRAWING NO. | DRAWING DESCRIPTION | SHEET NO. |
|---------------|-------------------------------|-----------|
| TS01 | TITLE SHEET | 1 |
| GN01 | GENERAL NOTES | 2 |
| LA01 | LEGEND & ABBREVIATIONS | 3 |
| SP01 | SITE PLAN | 4 |
| HC01 | HORIZONTAL CONTROL PLAN | 5 |
| GR01 | GRADING PLAN | 6 |
| UT01 | OVERALL UTILITY PLAN | 7 |
| SS01 | SANITARY SEWER PLAN & PROFILE | 8 |
| WT01 | SITE WATER MAIN PLAN | 9 |
| SD01 | STORM SEWER PLAN & PROFILE | 10 |
| EC01 | INITIAL EROSION CONTROL PLAN | 11 |
| EC02 | FINAL EROSION CONTROL PLAN | 12 |
| ECDT01-ECDT04 | EROSION CONTROL DETAILS | 13-16 |
| ST01 | SIGNING & STRIPING PLAN | 17 |
| LS01 | LANDSCAPE PLAN | 18 |

Provide



LOCATION MAP

SCALE: N.T.S.



VICINITY MAP

SCALE: N.T.S.

CIVIL ENGINEER

MATRIX DESIGN GROUP
1601 BLAKE STREET, SUITE 200
DENVER, CO. 80202
PH: 303-572-0200
FAX: 303-572-0202
CONTACT: DAVE KLINE, P.E., PTOE
DAVE_KLINE@MATRIXDESIGNGROUP.COM

LANDSCAPE ARCHITECT

MATRIX DESIGN GROUP
1601 BLAKE STREET, SUITE 200
DENVER, CO. 80202
PH: 303-572-0200
FAX: 303-572-0202
CONTACT: TERESA ROBERSON
TERESA_ROBERSON@MATRIXDESIGNGROUP.COM

BASIS OF BEARING:

BASIS OF BEARINGS: BEARINGS ARE BASED ON GRID BEARINGS OF THE COLORADO STATE PLANE CENTRAL ZONE, BASED ON THE EAST LINE OF LOT 1178 OF THE PLAT OF WOODMEN HILLS FILING NO. 10 AS RECORDED ON JULY 13, 2001 IN THE OFFICE OF THE EL PASO COUNTY CLERK AND RECORDER UNDER RECEPTION NUMBER 201098618, MONUMENTED ON THE NORTH END BY A FOUND 2-1/2" ALUMINUM CAP STAMPED "PLS 38160" AND ON THE SOUTH END BY A FOUND 1-1/2" ALUMINUM CAP STAMPED "PLS 32822", AND BEARS SOUTH 00°24'21" EAST A DISTANCE OF 1116.46 FEET.

BENCHMARK:

BENCHMARK IS DERIVED FROM AN ONLINE POSITIONING USER SERVICE PROVIDED BY THE NATIONAL GEODETIC SURVEY PERFORMED ON A SET #5 REBAR LOCATED ON THE EAST SIDE OF EASTONVILLE ROAD NEAR THE SOUTH PCR APPROXIMATELY 20 FEET SOUTH OF A SANITARY MANHOLE AND 12 FEET EAST OF A FIRE HYDRANT. THE ELEVATION DERIVED FROM THE STATIC SOLUTION IS 6960.52 U.S. SURVEY FEET (NAVD 88).

DESIGN ENGINEER'S STATEMENT:

THESE DETAILED PLANS AND SPECIFICATIONS WERE PREPARED UNDER MY DIRECTION AND SUPERVISION. SAID PLANS AND SPECIFICATIONS HAVE BEEN PREPARED ACCORDING TO THE CRITERIA ESTABLISHED BY THE COUNTY FOR DETAILED ROADWAY, DRAINAGE, GRADING AND EROSION CONTROL PLANS AND SPECIFICATIONS, AND SAID PLANS AND SPECIFICATIONS ARE IN CONFORMITY WITH APPLICABLE MASTER DRAINAGE PLANS AND MASTER TRANSPORTATION PLANS. SAID PLANS AND SPECIFICATIONS MEET THE PURPOSES FOR WHICH THE PARTICULAR ROADWAY AND DRAINAGE FACILITIES ARE DESIGNED AND ARE CORRECT TO THE BEST OF MY KNOWLEDGE AND BELIEF. I ACCEPT RESPONSIBILITY FOR ANY LIABILITY CAUSED BY ANY NEGLIGENT ACTS, ERRORS OR OMISSIONS ON MY PART IN PREPARATION OF THESE DETAILED PLANS AND SPECIFICATIONS.

DAVID KLINE, P.E., PTOE

DATE

EL PASO COUNTY:

COUNTY PLAN REVIEW IS PROVIDED ONLY FOR GENERAL CONFORMANCE WITH COUNTY DESIGN CRITERIA. THE COUNTY IS NOT RESPONSIBLE FOR THE ACCURACY AND ADEQUACY OF THE DESIGN, DIMENSIONS, AND/OR ELEVATIONS WHICH SHALL BE CONFIRMED AT THE JOB SITE. THE COUNTY THROUGH THE APPROVAL OF THIS DOCUMENT ASSUMES NO RESPONSIBILITY FOR COMPLETENESS AND/OR ACCURACY OF THIS DOCUMENT.

FILED IN ACCORDANCE WITH THE REQUIREMENTS OF THE EL PASO COUNTY LAND DEVELOPMENT CODE, DRAINAGE CRITERIA MANUAL, VOLUMES 1 AND 2, AND ENGINEERING CRITERIA MANUAL AS AMENDED.

IN ACCORDANCE WITH ECM SECTION 1.12, THESE CONSTRUCTION DOCUMENTS WILL BE VALID FOR CONSTRUCTION FOR A PERIOD OF 2 YEARS FROM THE DATE SIGNED BY THE EL PASO COUNTY ENGINEER. IF CONSTRUCTION HAS NOT STARTED WITHIN THOSE 2 YEARS, THE PLANS WILL NEED TO BE RESUBMITTED FOR APPROVAL, INCLUDING PAYMENT OF REVIEW FEES AT THE PLANNING AND COMMUNITY DEVELOPMENT DIRECTORS DISCRETION.

JENNIFER IRVINE, P.E.

DATE

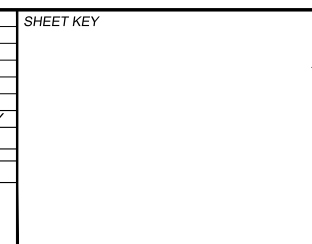
OWNER/DEVELOPER'S STATEMENT:

I, THE OWNER/DEVELOPER HAVE READ AND WILL COMPLY WITH ALL OF THE REQUIREMENTS SPECIFIED IN THESE DETAILED PLANS AND SPECIFICATIONS.

LIBERTY TREE ACADEMY COMPANY

DATE

| REFERENCE DRAWINGS | No. | DATE | DESCRIPTION | BY |
|---|-----|------|-------------|----|
| X-995-MDG22x34 | | | | |
| <u>COMPUTER FILE MANAGEMENT</u> | | | | |
| FILE NAME: R:\18.995.001 (Liberty Tree Academy)\Dwg\Construction Plans\TS01.dwg | | | | |
| CTB FILE: --- | | | | |
| PLOT DATE: May 1, 2018 3:41:00 PM | | | | |
| THIS DRAWING IS CURRENT AS OF PLOT DATE AND MAY BE SUBJECT TO CHANGE. | | | | |



SEAL
PRELIMINARY
THIS DRAWING HAS NOT BEEN APPROVED BY GOVERNING AGENCIES AND IS SUBJECT TO CHANGE

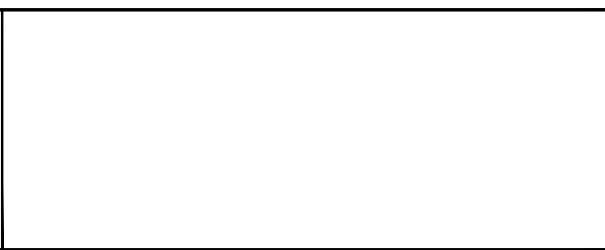
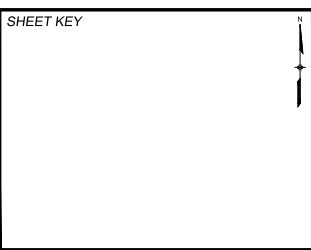
| | | | |
|---|--|---|------------------|
| LIBERTY TREE ACADEMY | | | |
| TOWN OF PEYTON, EL PASO COUNTY CONSTRUCTION DOCUMENTS | | | |
| TITLE SHEET | | | |
| FOR AND ON BEHALF OF MATRIX DESIGN GROUP, INC. PROJECT No. 18.995.001 | DESIGNED BY: ACR DRAWN BY: ACR CHECKED BY: DRK | SCALE: HORIZ DATE ISSUED: MAY 2018 SHEET: 1 OF 18 | DRAWING No. TS01 |



GENERAL CONSTRUCTION PLAN NOTES:

1. ALL DRAINAGE AND ROADWAY CONSTRUCTION SHALL MEET THE STANDARDS AND SPECIFICATIONS OF THE CITY OF COLORADO SPRINGS/EL PASO COUNTY DRAINAGE CRITERIA MANUAL, VOLUMES 1 AND 2, AND THE EL PASO COUNTY ENGINEERING CRITERIA MANUAL.
2. CONTRACTOR SHALL BE RESPONSIBLE FOR THE NOTIFICATION AND FIELD NOTIFICATION OF ALL EXISTING UTILITIES, WHETHER SHOWN ON THE PLANS OR NOT, BEFORE BEGINNING CONSTRUCTION. LOCATION OF EXISTING UTILITIES SHALL BE VERIFIED BY THE CONTRACTOR PRIOR TO CONSTRUCTION. CALL 811 TO CONTACT THE UTILITY NOTIFICATION CENTER OF COLORADO (UNCC).
3. CONTRACTOR SHALL KEEP A COPY OF THESE APPROVED PLANS, THE GRADING AND EROSION CONTROL PLAN, THE STORMWATER MANAGEMENT PLAN (SWMP), THE SOILS AND GEOTECHNICAL REPORT, AND THE APPROPRIATE DESIGN AND CONSTRUCTION STANDARDS AND SPECIFICATIONS AT THE JOB SITE AT ALL TIMES, INCLUDING THE FOLLOWING:
 - a. EL PASO COUNTY ENGINEERING CRITERIA MANUAL (ECM)
 - b. CITY OF COLORADO SPRINGS/EL PASO COUNTY DRAINAGE CRITERIA MANUAL, VOLUMES 1 AND 2
 - c. COLORADO DEPARTMENT OF TRANSPORTATION (CDOT) STANDARD SPECIFICATIONS FOR ROAD AND BRIDGE CONSTRUCTION
 - d. CDOT M & S STANDARDS
4. NOTWITHSTANDING ANYTHING DEPICTED IN THESE PLANS IN WORDS OR GRAPHIC REPRESENTATION, ALL DESIGN AND CONSTRUCTION RELATED TO ROADS, STORM DRAINAGE AND EROSION CONTROL SHALL CONFORM TO THE STANDARDS AND REQUIREMENTS OF THE MOST RECENT VERSION OF THE RELEVANT ADOPTED EL PASO COUNTY STANDARDS, INCLUDING THE LAND DEVELOPMENT CODE, THE ENGINEERING CRITERIA MANUAL, THE DRAINAGE CRITERIA MANUAL, AND THE DRAINAGE CRITERIA MANUAL VOLUME 2. ANY DEVIATIONS FROM REGULATIONS AND STANDARDS MUST BE REQUESTED, AND APPROVED, IN WRITING. ANY MODIFICATIONS NECESSARY TO MEET CRITERIA AFTER-THE-FACT WILL BE ENTIRELY THE DEVELOPER'S RESPONSIBILITY TO RECTIFY.
5. IT IS THE DESIGN ENGINEER'S RESPONSIBILITY TO ACCURATELY SHOW EXISTING CONDITIONS, BOTH ONSITE AND OFFSITE, ON THE CONSTRUCTION PLANS. ANY MODIFICATIONS NECESSARY DUE TO CONFLICTS, OMISSIONS, OR CHANGED CONDITIONS WILL BE ENTIRELY THE DEVELOPER'S RESPONSIBILITY TO RECTIFY.
6. CONTRACTOR SHALL SCHEDULE A PRE-CONSTRUCTION MEETING WITH EL PASO COUNTY PLANNING AND COMMUNITY DEVELOPMENT (PCD) - INSPECTIONS, PRIOR TO STARTING CONSTRUCTION.
7. IT IS THE CONTRACTOR'S RESPONSIBILITY TO UNDERSTAND THE REQUIREMENTS OF ALL JURISDICTIONAL AGENCIES AND TO OBTAIN ALL REQUIRED PERMITS, INCLUDING BUT NOT LIMITED TO EL PASO COUNTY EROSION AND STORMWATER QUALITY CONTROL PERMIT (ESQCP), REGIONAL BUILDING FLOODPLAIN DEVELOPMENT PERMIT, U.S. ARMY CORPS OF ENGINEERS-ISSUED 401 AND/OR 404 PERMITS, AND COUNTY AND STATE FUGITIVE DUST PERMITS.
8. CONTRACTOR SHALL NOT DEVIATE FROM THE PLANS WITHOUT FIRST OBTAINING WRITTEN APPROVAL FROM THE DESIGN ENGINEER AND PCD. CONTRACTOR SHALL NOTIFY THE DESIGN ENGINEER IMMEDIATELY UPON DISCOVERY OF ANY ERRORS OR INCONSISTENCIES.
9. ALL STORM DRAIN PIPE SHALL BE CLASS III RCP UNLESS OTHERWISE NOTED AND APPROVED BY PCD.
10. CONTRACTOR SHALL COORDINATE GEOTECHNICAL TESTING PER ECM STANDARDS. PAVEMENT DESIGN SHALL BE APPROVED BY EL PASO COUNTY PCD PRIOR TO PLACEMENT OF CURB AND GUTTER AND PAVEMENT.
11. ALL CONSTRUCTION TRAFFIC MUST ENTER/EXIT THE SITE AT APPROVED CONSTRUCTION ACCESS POINTS.
12. SIGHT VISIBILITY TRIANGLES AS IDENTIFIED IN THE PLANS SHALL BE PROVIDED AT ALL INTERSECTIONS. OBSTRUCTIONS GREATER THAN 18 INCHES ABOVE FLOWLINE ARE NOT ALLOWED WITHIN SIGHT TRIANGLES.
13. SIGNING AND STRIPING SHALL COMPLY WITH EL PASO COUNTY DOT AND MUTCD CRITERIA. [IF APPLICABLE, ADDITIONAL SIGNING AND STRIPING NOTES WILL BE PROVIDED.]
14. CONTRACTOR SHALL OBTAIN ANY PERMITS REQUIRED BY EL PASO COUNTY DOT, INCLUDING WORK WITHIN THE RIGHT-OF-WAY AND SPECIAL TRANSPORT PERMITS.
15. THE LIMITS OF CONSTRUCTION SHALL REMAIN WITHIN THE PROPERTY LINE UNLESS OTHERWISE NOTED. THE OWNER/DEVELOPER SHALL OBTAIN WRITTEN PERMISSION AND EASEMENTS, WHERE REQUIRED, FROM ADJOINING PROPERTY OWNER(S) PRIOR TO ANY OFF-SITE DISTURBANCE, GRADING, OR CONSTRUCTION.

| REFERENCE DRAWINGS | No. | DATE | DESCRIPTION REVISIONS | BY |
|---|-----|------|-----------------------|----|
| X-995-MDG22x34 | | | | |
| COMPUTER FILE MANAGEMENT | | | | |
| FILE NAME: R:\18.995.001 (Liberty Tree Academy)\Dwg\Construction Plans\GN01.dwg | | | | |
| CTB FILE: --- | | | | |
| PLOT DATE: 5/1/2018 3:41 PM | | | | |
| THIS DRAWING IS CURRENT AS OF PLOT DATE AND MAY BE SUBJECT TO CHANGE. | | | | |



PREPARED BY:

AN EMPLOYEE-OWNED COMPANY

SEAL

PRELIMINARY
THIS DRAWING HAS NOT BEEN APPROVED BY GOVERNING AGENCIES AND IS SUBJECT TO CHANGE

FOR AND ON BEHALF OF
MATRIX DESIGN GROUP, INC.
PROJECT No. 18.995.001

| | | | |
|--|-----------------|-----------------------|------------------|
| LIBERTY TREE ACADEMY | | | |
| TOWN OF PEYTON, EL PASO COUNTY CONSTRUCTION DOCUMENTS | | | |
| GENERAL NOTES | | | |
| DESIGNED BY: ACR | SCALE: HORIZ | DATE ISSUED: MAY 2018 | DRAWING No. GN01 |
| DRAWN BY: ACR | CHECKED BY: DRK | SHEET 2 OF 18 | |

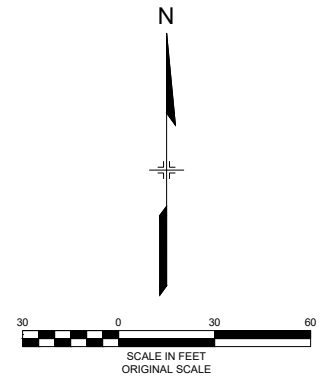
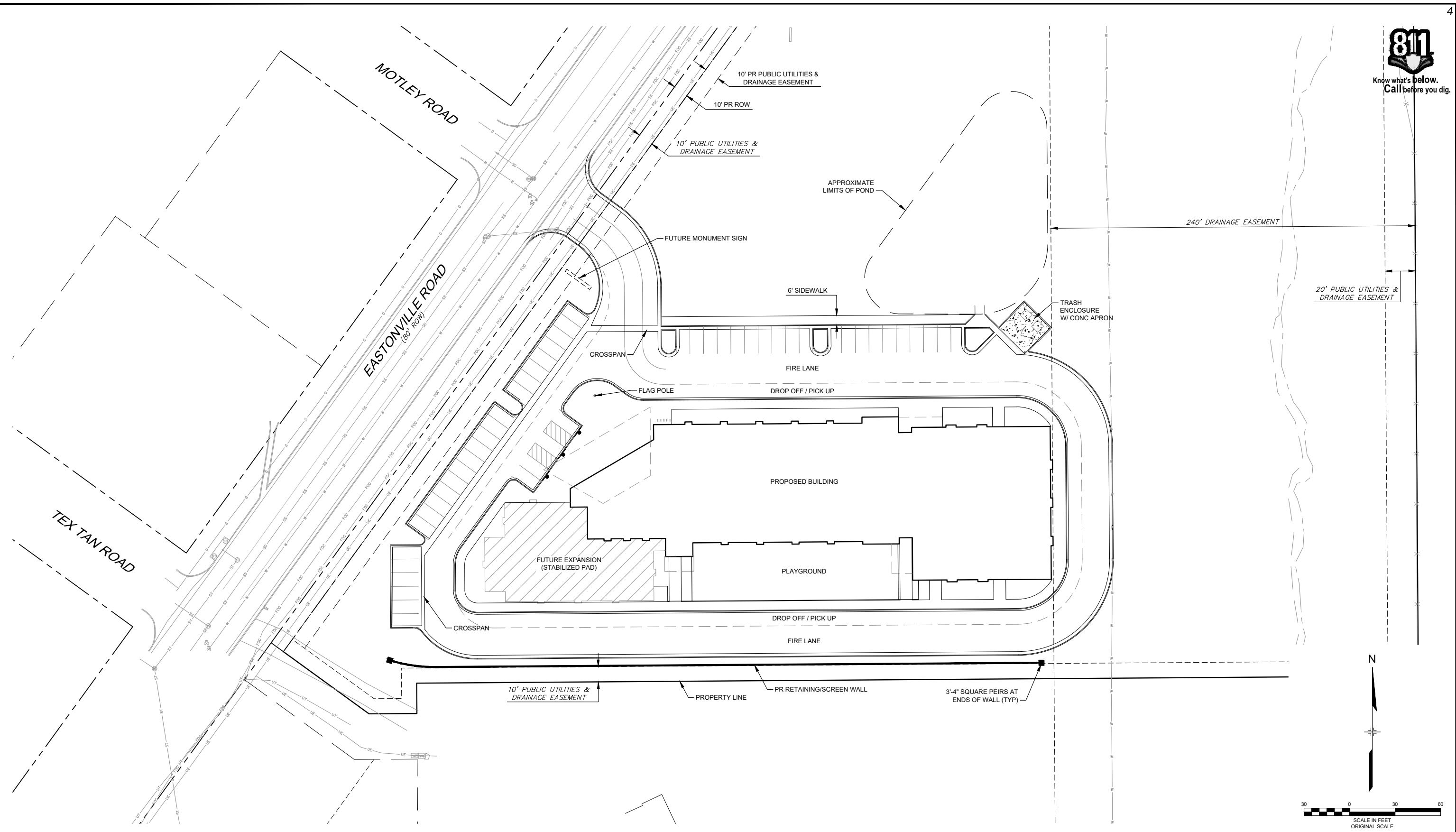


Know what's below.
Call before you dig.

| | | | | | | | | | | | |
|---|--|--|--|-------------------------|--|---|--|--|--|---|--|
| REFERENCE DRAWINGS X-995-MDG22x34 | | | | SHEET KEY | | SEAL | LIBERTY TREE ACADEMY | | | | |
| | | | | | | | TOWN OF PEYTON, EL PASO COUNTY CONSTRUCTION DOCUMENTS | | | | |
| No. DATE DESCRIPTION BY | | REVISIONS | | | | LEGEND & ABBREVIATIONS | | | | | |
| COMPUTER FILE MANAGEMENT | | | | | | | | | | | |
| FILE NAME: R:\18.995.001 (Liberty Tree Academy)\Dwg\Construction Plans\LA01.dwg CTB FILE: ---- PLOT DATE: 5/1/2018 3:41 PM THIS DRAWING IS CURRENT AS OF PLOT DATE AND MAY BE SUBJECT TO CHANGE. | | | | | | PREPARED BY: Matrix DESIGN GROUP AN EMPLOYEE-OWNED COMPANY | | PRELIMINARY THIS DRAWING HAS NOT BEEN APPROVED BY GOVERNING AGENCIES AND IS SUBJECT TO CHANGE | | FOR AND ON BEHALF OF MATRIX DESIGN GROUP, INC. PROJECT No. 18.995.001 | |
| | | DESIGNED BY: ACR DRAWN BY: ACR CHECKED BY: DRK | | SCALE HORIZ VERT. | | DATE ISSUED: MAY 2018 SHEET 3 OF 18 | | DRAWING No. LA01 | | | |



Know what's below.
Call before you dig.



| REFERENCE DRAWINGS | | | |
|---|------|-------------|----|
| No. | DATE | DESCRIPTION | BY |
| X-995-MDG22x34 | | | |
| X-995-PR-BASE | | | |
| X-995-EX-BASE | | | |
| X-995-EX-MAP | | | |
| COMPUTER FILE MANAGEMENT | | | |
| FILE NAME: R:\18.995.001 (Liberty Tree Academy)\Dwg\Construction Plans\SP01.dwg | | | |
| CTB FILE: --- | | | |
| PLOT DATE: 5/1/2018 3:41 PM | | | |
| THIS DRAWING IS CURRENT AS OF PLOT DATE AND MAY BE SUBJECT TO CHANGE. | | | |

| SHEET KEY | |
|-----------|---|
| N | ↑ |



PREPARED BY:

Matrix
DESIGN GROUP
AN EMPLOYEE-OWNED COMPANY

SEAL

PRELIMINARY
THIS DRAWING HAS NOT
BEEN APPROVED BY
GOVERNING AGENCIES AND
IS SUBJECT TO CHANGE

LIBERTY TREE ACADEMY

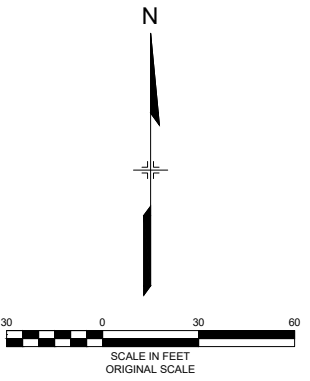
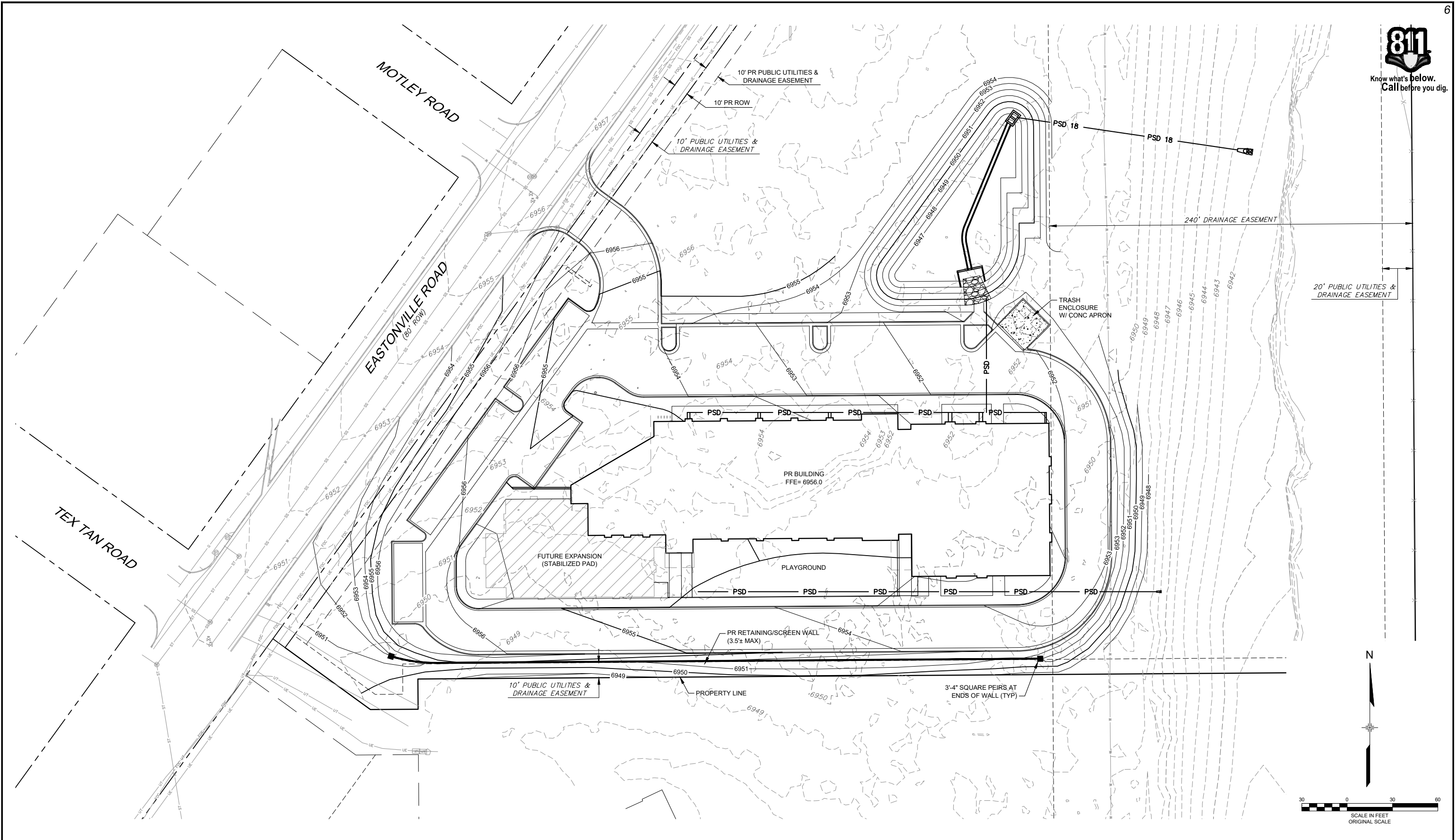
TOWN OF PEYTON, EL PASO COUNTY
CONSTRUCTION DOCUMENTS

SITE PLAN

| | | | |
|------------------|--------------|-----------------------|------------------|
| DESIGNED BY: ACR | SCALE: HORIZ | DATE ISSUED: MAY 2018 | DRAWING No. SP01 |
| DRAWN BY: ACR | VERT. | SHEET 4 OF 18 | |
| CHECKED BY: DRK | | | |



Know what's below.
Call before you dig.



| REFERENCE DRAWINGS | | | |
|--------------------|--|--|--|
| X-995-MDG2234 | | | |
| X-995-PR-BASE | | | |
| X-995-EX-BASE | | | |
| X-995-EX-MAP | | | |
| X-995-PR-UTIL | | | |

| No. | DATE | DESCRIPTION | BY |
|---|------|-------------|----|
| COMPUTER FILE MANAGEMENT | | | |
| FILE NAME: R:\18.995.001 (Liberty Tree Academy)\Dwg\Construction Plans\GR01.dwg | | | |
| CTB FILE: --- | | | |
| PLOT DATE: 5/1/2018 3:41 PM | | | |
| THIS DRAWING IS CURRENT AS OF PLOT DATE AND MAY BE SUBJECT TO CHANGE. | | | |

| SHEET KEY | |
|-----------|---|
| N | ↑ |



PREPARED BY:

Matrix
DESIGN GROUP
AN EMPLOYEE-OWNED COMPANY

SEAL

PRELIMINARY
THIS DRAWING HAS NOT BEEN APPROVED BY GOVERNING AGENCIES AND IS SUBJECT TO CHANGE

LIBERTY TREE ACADEMY

TOWN OF PEYTON, EL PASO COUNTY
CONSTRUCTION DOCUMENTS

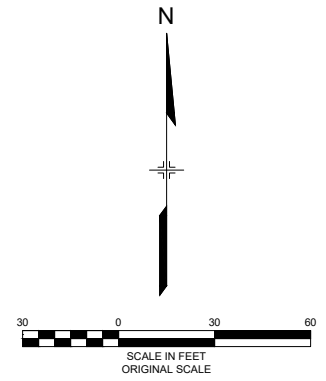
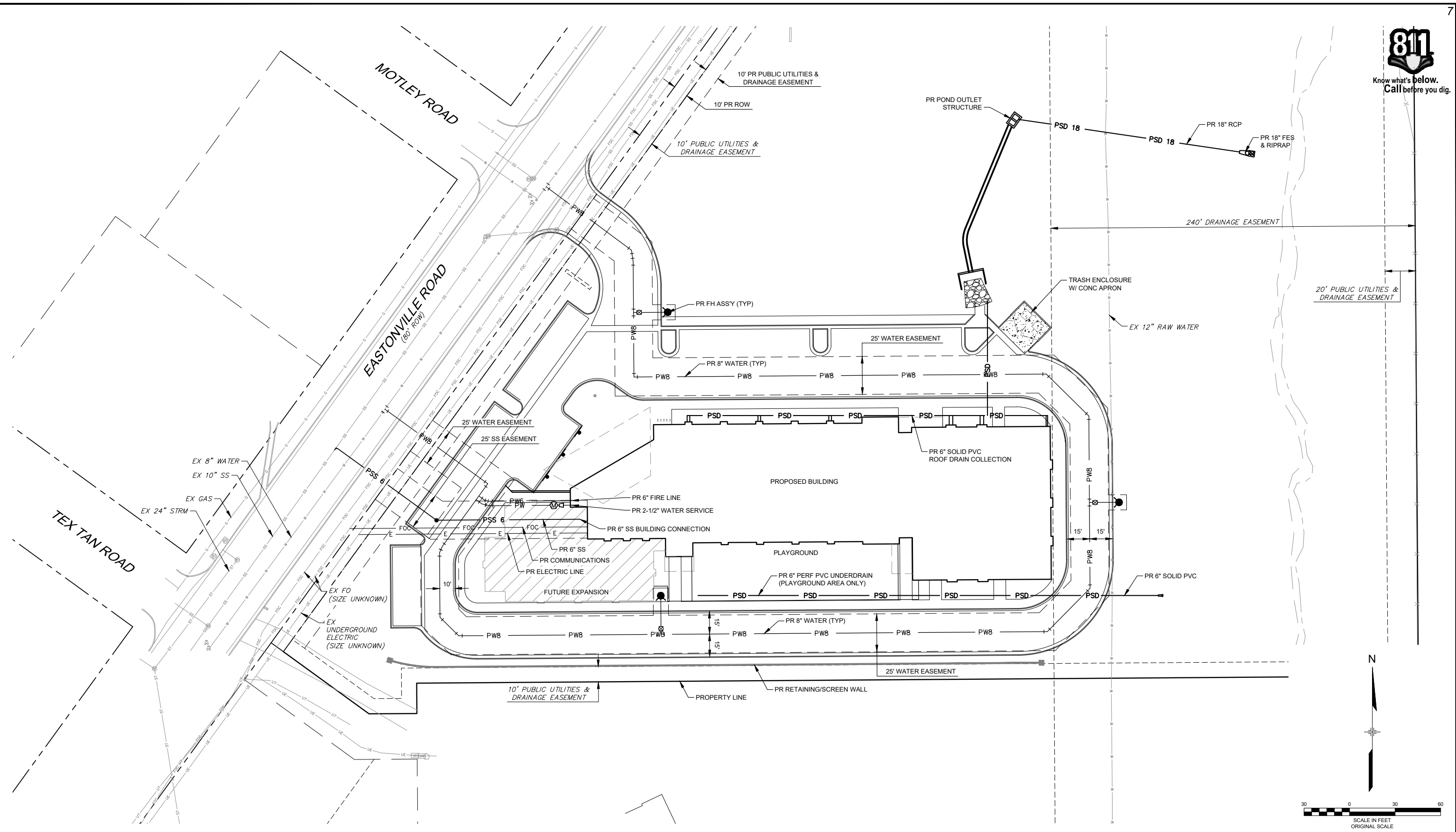
GRADING PLAN

| | | | |
|------------------|--------|-----------------------|-------------|
| DESIGNED BY: ACR | SCALE: | DATE ISSUED: MAY 2018 | DRAWING No: |
| CHECKED BY: DRK | HORIZ: | SHEET 6 OF 18 | GR01 |

FOR AND ON BEHALF OF MATRIX DESIGN GROUP, INC. PROJECT No. 18.995.001



Know what's below.
Call before you dig.



| No. | DATE | DESCRIPTION REVISIONS | BY |
|---|------|-----------------------|----|
| COMPUTER FILE MANAGEMENT | | | |
| FILE NAME: R:\18.995.001 (Liberty Tree Academy)\Dwg\Construction Plans\UT01.dwg | | | |
| CTB FILE: --- | | | |
| PLOT DATE: 5/1/2018 3:41 PM | | | |
| THIS DRAWING IS CURRENT AS OF PLOT DATE AND MAY BE SUBJECT TO CHANGE. | | | |

| SHEET KEY | |
|-----------|---|
| N | ↑ |



PREPARED BY:

Matrix
DESIGN GROUP
AN EMPLOYEE-OWNED COMPANY

SEAL

PRELIMINARY
THIS DRAWING HAS NOT BEEN APPROVED BY GOVERNING AGENCIES AND IS SUBJECT TO CHANGE

LIBERTY TREE ACADEMY

TOWN OF PEYTON, EL PASO COUNTY
CONSTRUCTION DOCUMENTS

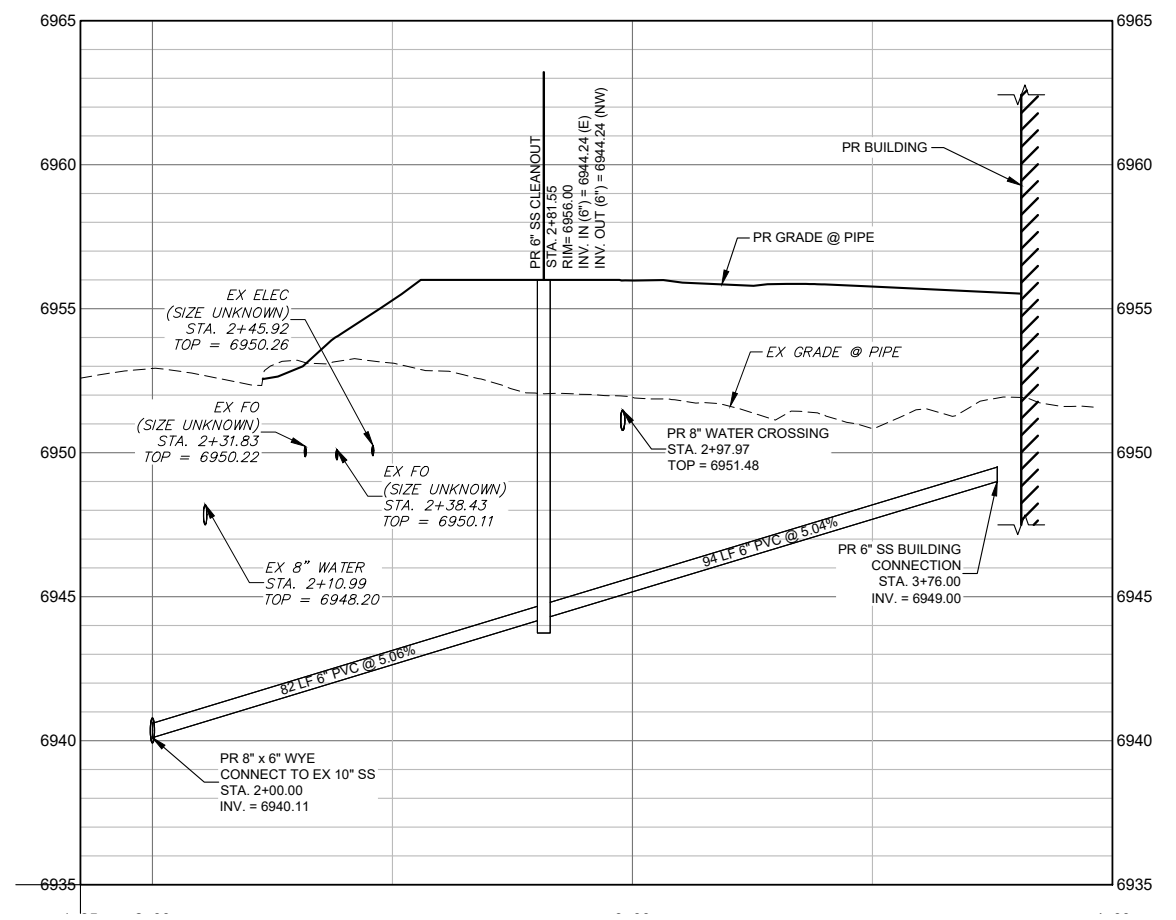
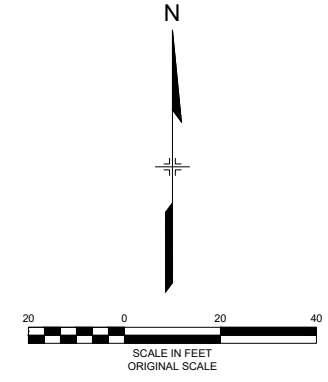
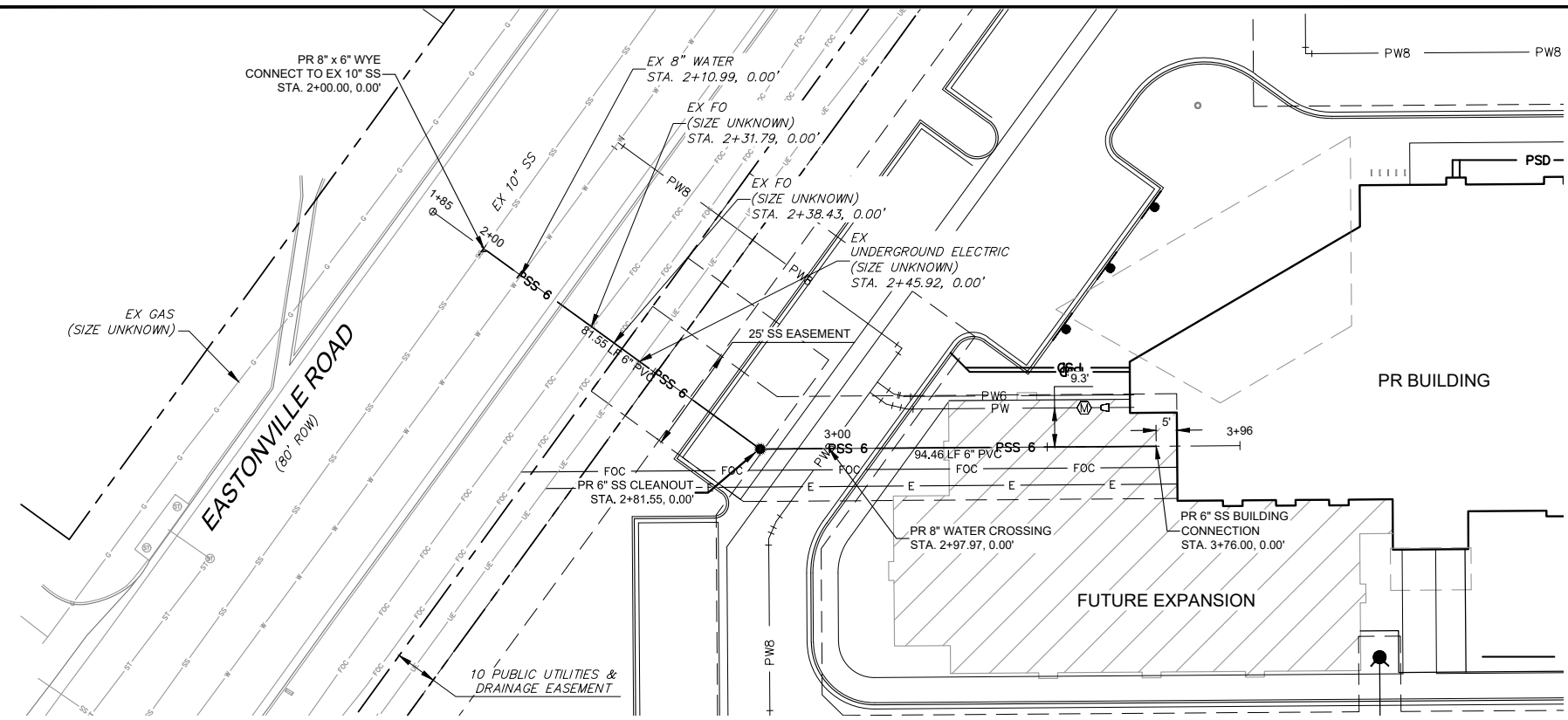
OVERALL UTILITY PLAN

| | | | |
|------------------|-------|-----------------------|-------------|
| DESIGNED BY: ACR | SCALE | DATE ISSUED: MAY 2018 | DRAWING No. |
| CHECKED BY: DRK | HORIZ | SHEET 7 OF 18 | UT01 |

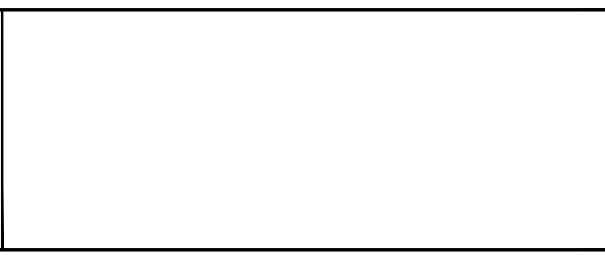
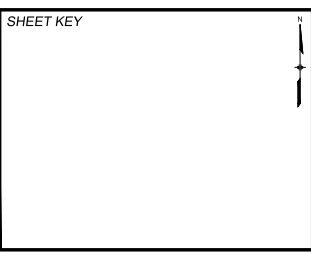
FOR AND ON BEHALF OF MATRIX DESIGN GROUP, INC. PROJECT No. 18.995.001



Know what's below.
Call before you dig.



| No. | DATE | DESCRIPTION | BY |
|---|------|-------------|----|
| COMPUTER FILE MANAGEMENT | | | |
| FILE NAME: R:\18.995.001 (Liberty Tree Academy)\Dwg\Construction Plans\SS01.dwg | | | |
| CTB FILE: --- | | | |
| PLOT DATE: 5/1/2018 3:41 PM | | | |
| THIS DRAWING IS CURRENT AS OF PLOT DATE AND MAY BE SUBJECT TO CHANGE. | | | |



SEAL

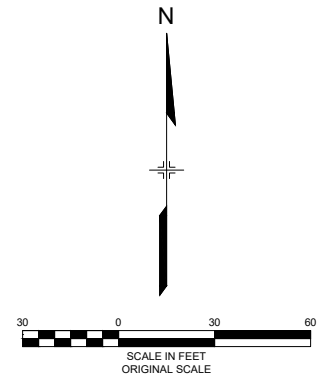
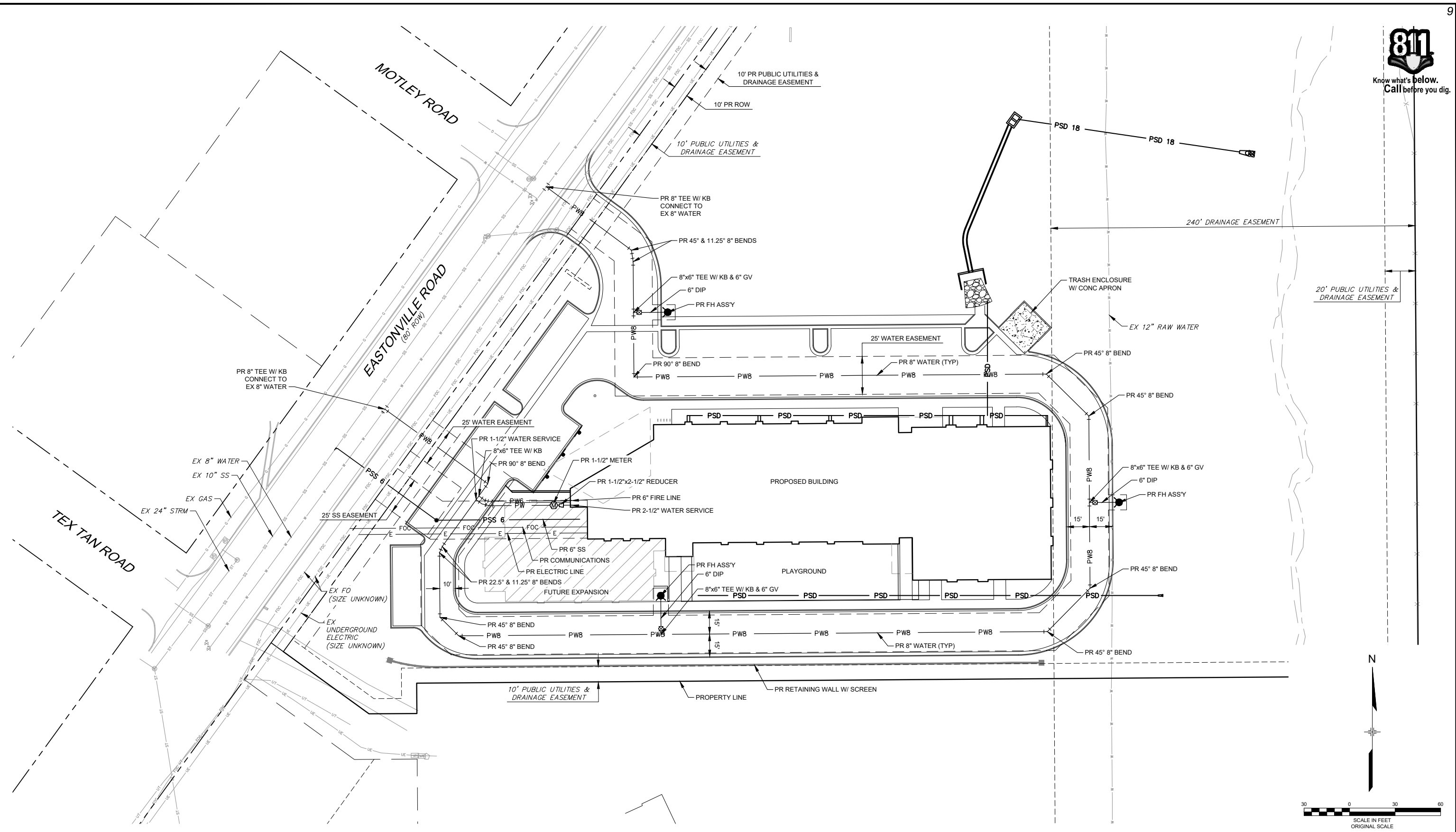
PRELIMINARY
THIS DRAWING HAS NOT BEEN APPROVED BY GOVERNING AGENCIES AND IS SUBJECT TO CHANGE

FOR AND ON BEHALF OF
MATRIX DESIGN GROUP, INC.
PROJECT No. 18.995.001

| | | | |
|--|-------|-----------------------|-------------|
| LIBERTY TREE ACADEMY | | | |
| TOWN OF PEYTON, EL PASO COUNTY CONSTRUCTION DOCUMENTS | | | |
| SANITARY SEWER PLAN & PROFILE | | | |
| DESIGNED BY: ACR | SCALE | DATE ISSUED: MAY 2018 | DRAWING No. |
| CHECKED BY: DRK | HORIZ | SHEET 8 OF 18 | SS01 |



Know what's below.
Call before you dig.



| No. | DATE | DESCRIPTION | BY |
|---|------|-------------|----|
| COMPUTER FILE MANAGEMENT | | | |
| FILE NAME: R:\18.995.001 (Liberty Tree Academy)\Dwg\Construction Plans\WO01.dwg | | | |
| CTB FILE: --- | | | |
| PLOT DATE: 5/1/2018 3:41 PM | | | |
| THIS DRAWING IS CURRENT AS OF PLOT DATE AND MAY BE SUBJECT TO CHANGE. | | | |

| SHEET KEY | |
|-----------|---|
| N | ↑ |



SEAL

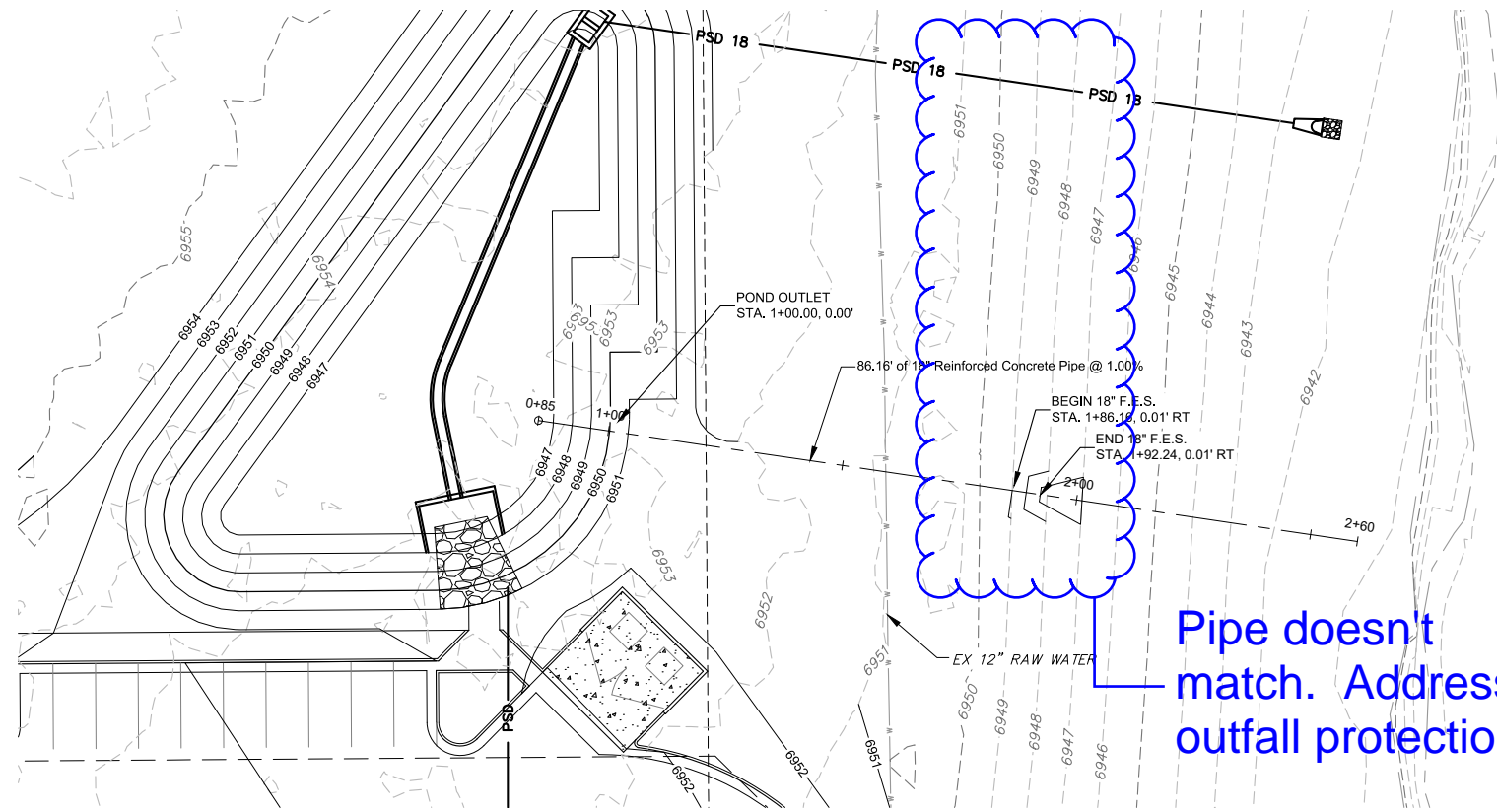
PRELIMINARY
THIS DRAWING HAS NOT BEEN APPROVED BY GOVERNING AGENCIES AND IS SUBJECT TO CHANGE

FOR AND ON BEHALF OF
MATRIX DESIGN GROUP, INC.
PROJECT No. 18.995.001

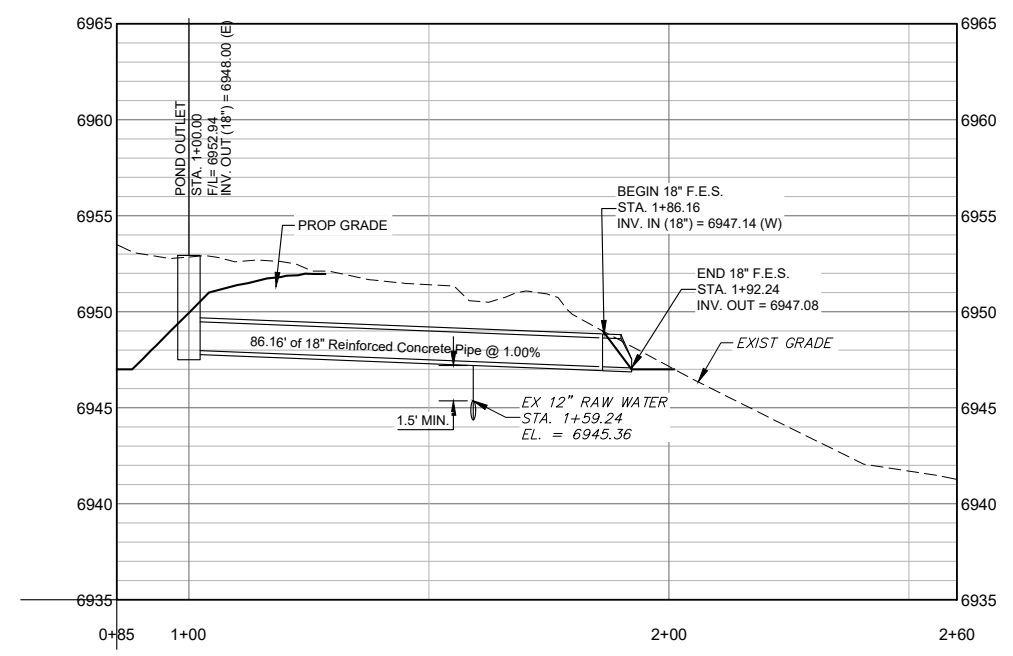
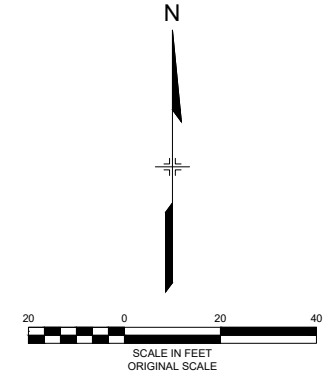
| | | | |
|--|-------|-----------------------|-------------|
| LIBERTY TREE ACADEMY | | | |
| TOWN OF PEYTON, EL PASO COUNTY CONSTRUCTION DOCUMENTS | | | |
| SITE WATER MAIN PLAN | | | |
| DESIGNED BY: ACR | SCALE | DATE ISSUED: MAY 2018 | DRAWING No. |
| CHECKED BY: DRK | HORIZ | SHEET 9 OF 18 | WO01 |



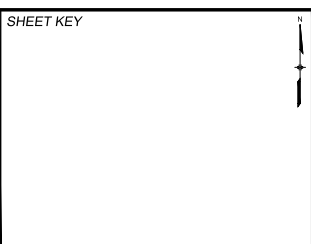
Know what's below.
Call before you dig.



Pipe doesn't match. Address outfall protection.



| No. | DATE | DESCRIPTION | BY |
|---|------|-------------|----|
| REVISIONS | | | |
| COMPUTER FILE MANAGEMENT | | | |
| FILE NAME: R:\18.995.001 (Liberty Tree Academy)\Dwg\Construction Plans\SD01.dwg | | | |
| CTB FILE: --- | | | |
| PLOT DATE: 5/1/2018 3:41 PM | | | |
| THIS DRAWING IS CURRENT AS OF PLOT DATE AND MAY BE SUBJECT TO CHANGE. | | | |



SEAL

PRELIMINARY

THIS DRAWING HAS NOT BEEN APPROVED BY GOVERNING AGENCIES AND IS SUBJECT TO CHANGE

FOR AND ON BEHALF OF MATRIX DESIGN GROUP, INC. PROJECT No. 18.995.001

| | | | |
|--|-------|-----------------------|-------------|
| LIBERTY TREE ACADEMY | | | |
| TOWN OF PEYTON, EL PASO COUNTY CONSTRUCTION DOCUMENTS | | | |
| STORMWATER PLAN & PROFILE | | | |
| DESIGNED BY: ACR | SCALE | DATE ISSUED: MAY 2018 | DRAWING No. |
| CHECKED BY: DRK | HORIZ | SHEET 10 OF 18 | SD01 |

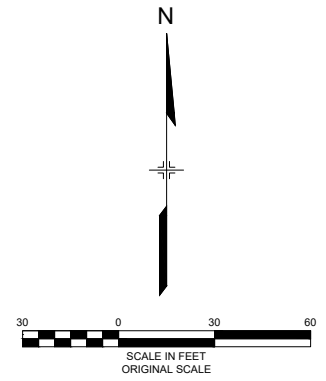
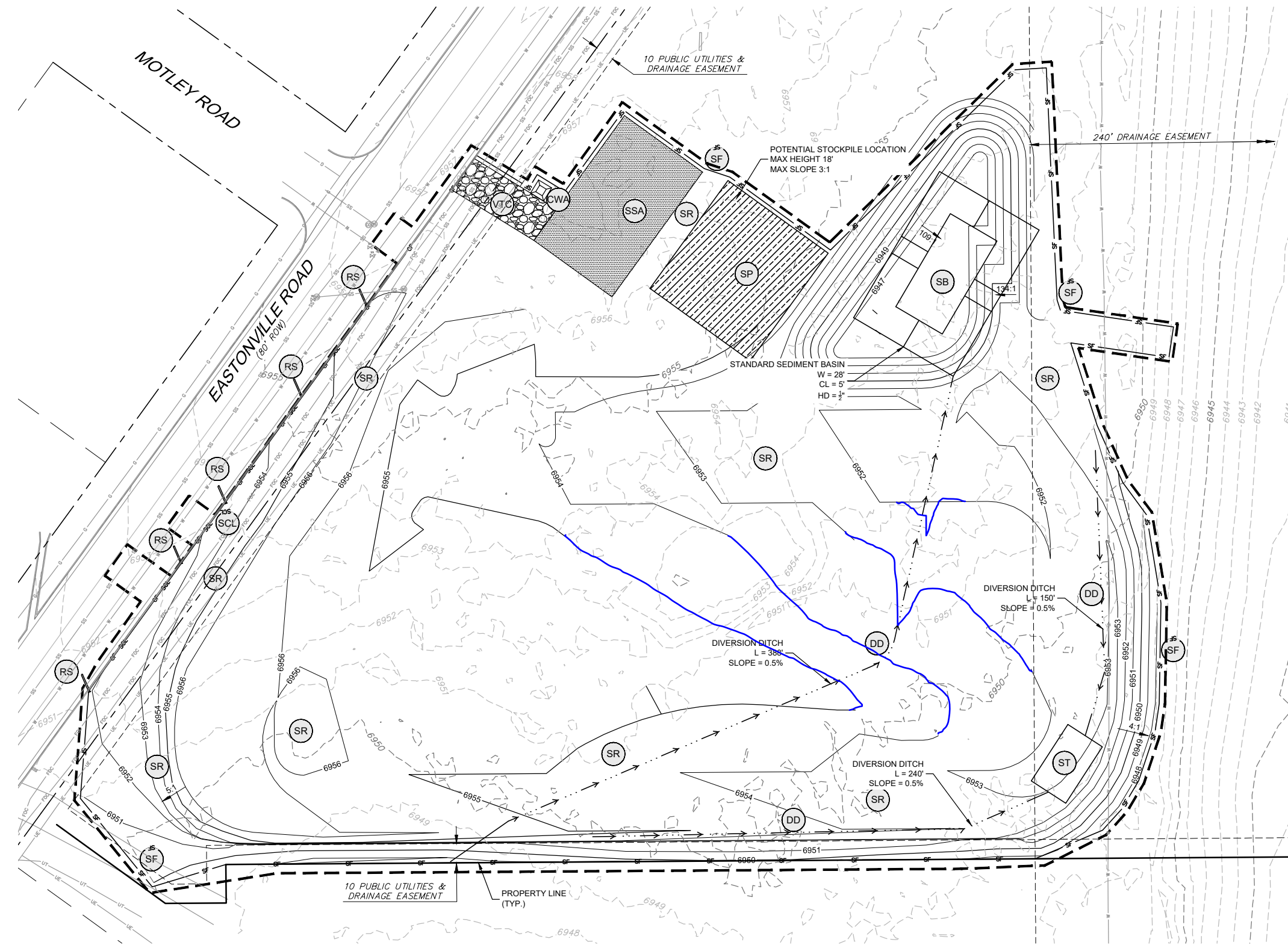


BMP LEGEND

- CWA CONCRETE WASHOUT AREA
- DD DIVERSION DITCH
- ECB EROSION CONTROL BLANKET
- SB SEDIMENT BASIN
- SCL SEDIMENT CONTROL LOG
- ST SEDIMENT TRAP
- SM SEEDING AND MULCHING
- SF SILT FENCE
- SSA STABILIZED STAGING AREA
- SR SURFACE ROUGHING
- VTC VEHICLE TRACKING CONTROL
- RS ROCK SOCK
- CF CONSTRUCTION FENCE
- LOC LIMITS OF CONSTRUCTION
- EXISTING 1' CONTOURS
- EXISTING 5' CONTOURS
- PROPOSED 1' CONTOURS
- PROPOSED 5' CONTOURS

NOTES:

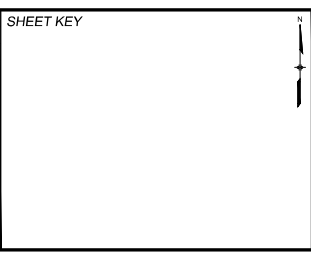
1. SUGGESTED VTC LOCATIONS ARE SHOWN ON THE PLAN. THE EXACT LOCATIONS MAY VARY DUE TO PHASING, BUT MUST BE PROVIDED AT ALL POINTS OF ACCESS.
2. SUGGESTED STOCKPILE LOCATIONS ARE SHOWN ON PLAN. EXACT LOCATIONS MAY VARY WITHIN THE PROJECT LIMITS. SEE THE STOCKPILE MANAGEMENT DETAIL FOR ADDITIONAL INFORMATION.
3. SUGGESTED CONCRETE WASHOUT AND STABILIZED STAGING AREAS ARE SHOWN ON PLAN. EXACT LOCATIONS MAY VARY WITHIN THE PROJECT LIMITS. SEE THE CONCRETE WASHOUT AND STABILIZED STAGING AREA DETAIL FOR ADDITIONAL INFORMATION.
4. INLET PROTECTION, CURB SOCKS, AND PERIMETER CONTROL TO BE INSTALLED PRIOR TO DEMOLITION. SILT FENCE MAY BE USED AS PERIMETER CONTROL IN LANDSCAPED AREAS. ROCK SOCKS AND CONSTRUCTION FENCING SHOULD BE USED AS PERIMETER CONTROL ON IMPERVIOUS SURFACES.



| No. | DATE | DESCRIPTION REVISIONS | BY |
|-----|------|-----------------------|----|
| | | | |
| | | | |

COMPUTER FILE MANAGEMENT

FILE NAME: R:\18.995.001 (Liberty Tree Academy)\Dwg\Construction Plans\GEC\EC01.dwg
 CTB FILE: ---
 PLOT DATE: 5/1/2018 3:47 PM
 THIS DRAWING IS CURRENT AS OF PLOT DATE AND MAY BE SUBJECT TO CHANGE.



Matrix
DESIGN GROUP
AN EMPLOYEE-OWNED COMPANY

PRELIMINARY
THIS DRAWING HAS NOT BEEN APPROVED BY GOVERNING AGENCIES AND IS SUBJECT TO CHANGE

FOR AND ON BEHALF OF
MATRIX DESIGN GROUP, INC.
PROJECT No. 18.995.001

LIBERTY TREE ACADEMY

TOWN OF PEYTON, EL PASO COUNTY
CONSTRUCTION DOCUMENTS

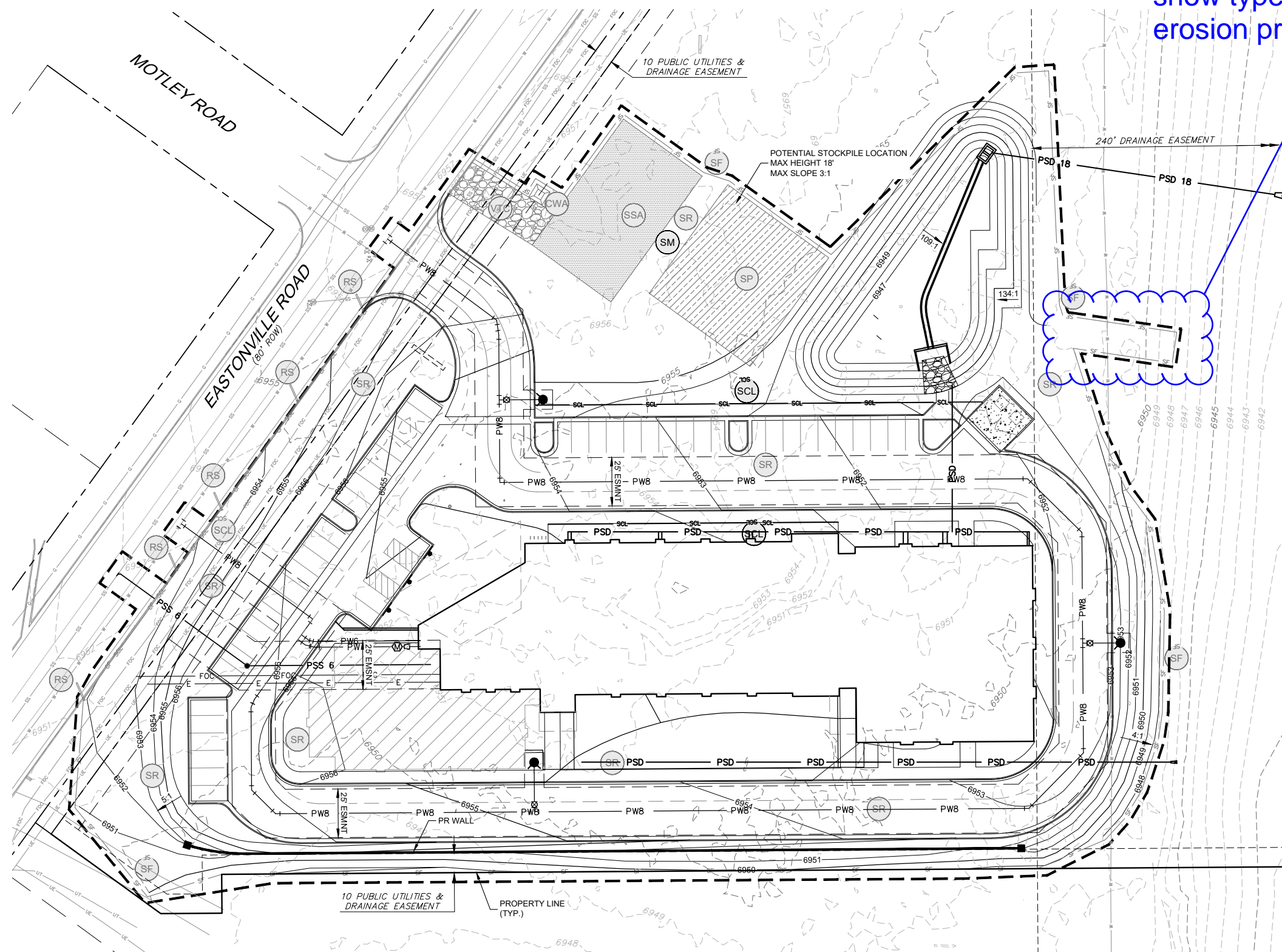
INITIAL EROSION CONTROL PLAN
SITE PREP, DEMO, AND GRADING

| | | | |
|------------------|--------------|-----------------------|------------------|
| DESIGNED BY: ACR | SCALE: HORIZ | DATE ISSUED: MAY 2018 | DRAWING No. EC01 |
| CHECKED BY: DRK | VERT. | SHEET 11 OF 18 | |



Know what's below. Call before you dig.

If this is a spillway show type of erosion protection.



BMP LEGEND

- Legend items: CWA CONCRETE WASHOUT AREA, DD DIVERSION DITCH, ECB EROSION CONTROL BLANKET, SB SEDIMENT BASIN, SCL SEDIMENT CONTROL LOG, ST SEDIMENT TRAP, SM SEEDING AND MULCHING, SF SILT FENCE, SSA STABILIZED STAGING AREA, SR SURFACE ROUGHING, VTC VEHICLE TRACKING CONTROL, RS ROCK SOCKS, CF CONSTRUCTION FENCE, LOC LIMITS OF CONSTRUCTION, EXISTING 1' CONTOURS, EXISTING 5' CONTOURS, PROPOSED 1' CONTOURS, PROPOSED 5' CONTOURS

NOTES:

- 1. SUGGESTED VTC LOCATIONS ARE SHOWN ON THE PLAN. THE EXACT LOCATIONS MAY VARY DUE TO PHASING, BUT MUST BE PROVIDED AT ALL POINTS OF ACCESS.
2. SUGGESTED STOCKPILE LOCATIONS ARE SHOWN ON PLAN. EXACT LOCATIONS MAY VARY WITHIN THE PROJECT LIMITS. SEE THE STOCKPILE MANAGEMENT DETAIL FOR ADDITIONAL INFORMATION.
3. SUGGESTED CONCRETE WASHOUT AND STABILIZED STAGING AREAS ARE SHOWN ON PLAN. EXACT LOCATIONS MAY VARY WITHIN THE PROJECT LIMITS. SEE THE CONCRETE WASHOUT AND STABILIZED STAGING AREA DETAIL FOR ADDITIONAL INFORMATION.
4. INLET PROTECTION, CURB SOCKS, AND PERIMETER CONTROL TO BE INSTALLED PRIOR TO DEMOLITION. SILT FENCE MAY BE USED AS PERIMETER CONTROL IN LANDSCAPED AREAS. ROCK SOCKS AND CONSTRUCTION FENCING SHOULD BE USED AS PERIMETER CONTROL ON IMPERVIOUS SURFACES.

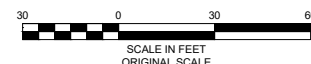


Table with columns: No., DATE, DESCRIPTION REVISIONS, BY. Includes 'COMPUTER FILE MANAGEMENT' section with file name, CTB file, and plot date.

SHEET KEY table with columns for sheet identification and revision tracking.

Matrix DESIGN GROUP logo and company information: AN EMPLOYEE-OWNED COMPANY.

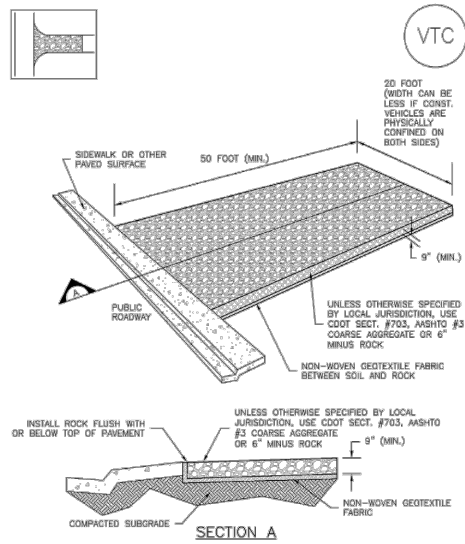
PRELIMINARY THIS DRAWING HAS NOT BEEN APPROVED BY GOVERNING AGENCIES AND IS SUBJECT TO CHANGE. FOR AND ON BEHALF OF MATRIX DESIGN GROUP, INC. PROJECT No. 18.995.001

LIBERTY TREE ACADEMY TOWN OF PEYTON, EL PASO COUNTY CONSTRUCTION DOCUMENTS FINAL EROSION CONTROL PLAN PERMANENT SITE STABILIZATION. Includes designer, date, and drawing number EC02.



Know what's below.
Call before you dig.

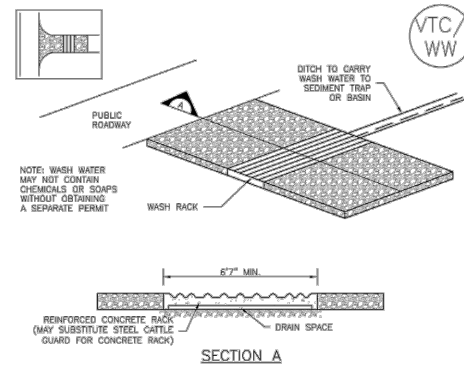
Vehicle Tracking Control (VTC) SM-4



VTC-1. AGGREGATE VEHICLE TRACKING CONTROL

November 2010 Urban Drainage and Flood Control District VTC-3
Urban Storm Drainage Criteria Manual Volume 3

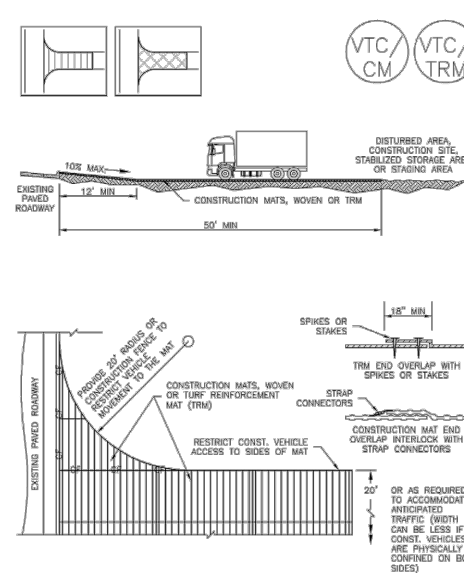
SM-4 Vehicle Tracking Control (VTC)



VTC-2. AGGREGATE VEHICLE TRACKING CONTROL WITH WASH RACK

VTC-4 Urban Drainage and Flood Control District November 2010
Urban Storm Drainage Criteria Manual Volume 3

Vehicle Tracking Control (VTC) SM-4



VTC-3. VEHICLE TRACKING CONTROL W/ CONSTRUCTION MAT OR TURF REINFORCEMENT MAT (TRM)

November 2010 Urban Drainage and Flood Control District VTC-5
Urban Storm Drainage Criteria Manual Volume 3

SM-4 Vehicle Tracking Control (VTC)

STABILIZED CONSTRUCTION ENTRANCE/EXIT INSTALLATION NOTES

- SEE PLAN VIEW FOR - LOCATION OF CONSTRUCTION ENTRANCE(S)/EXIT(S). - TYPE OF CONSTRUCTION ENTRANCE(S)/EXIT(S) (WITH/WITHOUT WHEEL WASH, CONSTRUCTION MAT OR TRM).
- CONSTRUCTION MAT OR TRM STABILIZED CONSTRUCTION ENTRANCES ARE ONLY TO BE USED ON SHORT DURATION PROJECTS (TYPICALLY RANGING FROM A WEEK TO A MONTH) WHERE THERE WILL BE LIMITED VEHICULAR ACCESS.
- A STABILIZED CONSTRUCTION ENTRANCE/EXIT SHALL BE LOCATED AT ALL ACCESS POINTS WHERE VEHICLES ACCESS THE CONSTRUCTION SITE FROM PAVED RIGHT-OF-WAYS.
- STABILIZED CONSTRUCTION ENTRANCE/EXIT SHALL BE INSTALLED PRIOR TO ANY LAND DISTURBING ACTIVITIES.
- A NON-WOVEN GEOTEXTILE FABRIC SHALL BE PLACED UNDER THE STABILIZED CONSTRUCTION ENTRANCE/EXIT PRIOR TO THE PLACEMENT OF ROCK.
- UNLESS OTHERWISE SPECIFIED BY LOCAL JURISDICTION, ROCK SHALL CONSIST OF DOT SECT. #703, AASHTO #3 COARSE AGGREGATE OR 6" (MINUS) ROCK.

STABILIZED CONSTRUCTION ENTRANCE/EXIT MAINTENANCE NOTES

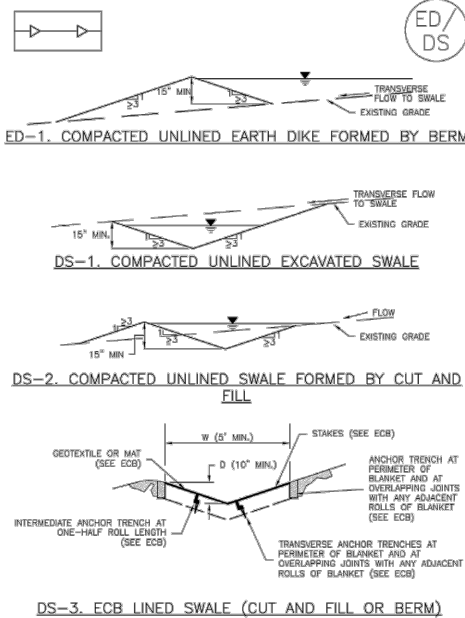
- INSPECT BMPs EACH WORKDAY, AND MAINTAIN THEM IN EFFECTIVE OPERATING CONDITION. MAINTENANCE OF BMPs SHOULD BE PROACTIVE, NOT REACTIVE. INSPECT BMPs AS SOON AS POSSIBLE (AND ALWAYS WITHIN 24 HOURS) FOLLOWING A STORM THAT CAUSES SURFACE EROSION, AND PERFORM NECESSARY MAINTENANCE.
- FREQUENT OBSERVATIONS AND MAINTENANCE ARE NECESSARY TO MAINTAIN BMPs IN EFFECTIVE OPERATING CONDITION. INSPECTIONS AND CORRECTIVE MEASURES SHOULD BE DOCUMENTED THOROUGHLY.
- WHERE BMPs HAVE FAILED, REPAIR OR REPLACEMENT SHOULD BE INITIATED UPON DISCOVERY OF THE FAILURE.
- ROCK SHALL BE REAPPLIED OR REGRADED AS NECESSARY TO THE STABILIZED ENTRANCE/EXIT TO MAINTAIN A CONSISTENT DEPTH.
- SEDIMENT TRACKED ONTO PAVED ROADS IS TO BE REMOVED THROUGHOUT THE DAY AND AT THE END OF THE DAY BY SHOVELING OR SWEEPING. SEDIMENT MAY NOT BE WASHED DOWN STORM SEWER DRAINS.

NOTE: MANY JURISDICTIONS HAVE BMP DETAILS THAT VARY FROM USFCD STANDARD DETAILS. CONSULT WITH LOCAL JURISDICTIONS AS TO WHICH DETAIL SHOULD BE USED WHEN DIFFERENCES ARE NOTED.

(DETAILS ADAPTED FROM CITY OF BROOMFIELD, COLORADO, NOT AVAILABLE IN AURORA)

VTC-6 Urban Drainage and Flood Control District November 2010
Urban Storm Drainage Criteria Manual Volume 3

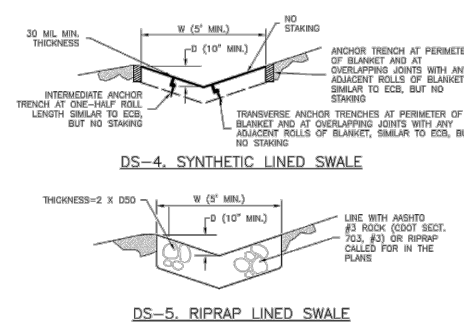
Earth Dikes and Drainage Swales (ED/DS) EC-10



DS-3. ECB LINED SWALE (CUT AND FILL OR BERM)

November 2010 Urban Drainage and Flood Control District ED/DS-3
Urban Storm Drainage Criteria Manual Volume 3

EC-10 Earth Dikes and Drainage Swales (ED/DS)



DS-5. RIPRAP LINED SWALE

EARTH DIKE AND DRAINAGE SWALE INSTALLATION NOTES

- SEE SITE PLAN FOR - LOCATION OF DIVERSION SWALE - TYPE OF SWALE (UNLINED, COMPACTED AND/OR LINED). - LENGTH OF EACH SWALE. - DEPTH, D, AND WIDTH, W DIMENSIONS. - FOR ECB/TRM LINED DITCH, SEE ECB DETAIL. - FOR RIPRAP LINED DITCH, SEE ECB DETAIL, D50.
- SEE DRAINAGE PLANS FOR DETAILS OF PERMANENT CONVEYANCE FACILITIES AND/OR DIVERSION SWALES EXCEEDING 2-YEAR FLOW RATE OR 10 CFS.
- EARTH DIKES AND SWALES INDICATED ON SWMP PLAN SHALL BE INSTALLED PRIOR TO LAND-DISTURBING ACTIVITIES IN PROXIMITY.
- EMBANKMENT IS TO BE COMPACTED TO 90% OF MAXIMUM DENSITY AND WITHIN 2% OF OPTIMUM MOISTURE CONTENT ACCORDING TO ASTM D698.
- SWALES ARE TO DRAIN TO A SEDIMENT CONTROL BMP.
- FOR LINED DITCHES, INSTALLATION OF ECB/TRM SHALL CONFORM TO THE REQUIREMENTS OF THE ECB DETAIL.
- WHEN CONSTRUCTION TRAFFIC MUST CROSS A DIVERSION SWALE, INSTALL A TEMPORARY CULVERT WITH A MINIMUM DIAMETER OF 12 INCHES.

ED/DS-4 Urban Drainage and Flood Control District November 2010
Urban Storm Drainage Criteria Manual Volume 3

Earth Dikes and Drainage Swales (ED/DS) EC-10

EARTH DIKE AND DRAINAGE SWALE MAINTENANCE NOTES

- INSPECT BMPs EACH WORKDAY, AND MAINTAIN THEM IN EFFECTIVE OPERATING CONDITION. MAINTENANCE OF BMPs SHOULD BE PROACTIVE, NOT REACTIVE. INSPECT BMPs AS SOON AS POSSIBLE (AND ALWAYS WITHIN 24 HOURS) FOLLOWING A STORM THAT CAUSES SURFACE EROSION, AND PERFORM NECESSARY MAINTENANCE.
- FREQUENT OBSERVATIONS AND MAINTENANCE ARE NECESSARY TO MAINTAIN BMPs IN EFFECTIVE OPERATING CONDITION. INSPECTIONS AND CORRECTIVE MEASURES SHOULD BE DOCUMENTED THOROUGHLY.
- WHERE BMPs HAVE FAILED, REPAIR OR REPLACEMENT SHOULD BE INITIATED UPON DISCOVERY OF THE FAILURE.
- SWALES SHALL REMAIN IN PLACE UNTIL THE END OF CONSTRUCTION; IF APPROVED BY LOCAL JURISDICTION, SWALES MAY BE LEFT IN PLACE.
- WHEN A SWALE IS REMOVED, THE DISTURBED AREA SHALL BE COVERED WITH TOPSOIL, SEEDS AND MULCHED OR OTHERWISE STABILIZED IN A MANNER APPROVED BY LOCAL JURISDICTION.

(DETAIL ADAPTED FROM DOUGLAS COUNTY, COLORADO AND THE CITY OF COLORADO SPRINGS, COLORADO, NOT AVAILABLE IN AURORA)

NOTE: MANY JURISDICTIONS HAVE BMP DETAILS THAT VARY FROM USFCD STANDARD DETAILS. CONSULT WITH LOCAL JURISDICTIONS AS TO WHICH DETAIL SHOULD BE USED WHEN DIFFERENCES ARE NOTED.

November 2010 Urban Drainage and Flood Control District ED/DS-5
Urban Storm Drainage Criteria Manual Volume 3

Mulching (MU) EC-4

Description

Mulching consists of evenly applying straw, hay, shredded wood mulch, rock, bark or compost to disturbed soils and securing the mulch by crimping, tackifiers, netting or other measures. Mulching helps reduce erosion by protecting bare soil from rainfall impact, increasing infiltration, and reducing runoff. Although often applied in conjunction with temporary or permanent seeding, it can also be used for temporary stabilization of areas that cannot be reseeded due to seasonal constraints.



Photograph MU-1. An area that was recently seeded, mulched, and crimped.

Mulch can be applied either using standard mechanical dry application methods or using hydromulching equipment that hydraulically applies a slurry of water, wood fiber mulch, and often a tackifier.

Appropriate Uses

Use mulch in conjunction with seeding to help protect the seedbed and stabilize the soil. Mulch can also be used as a temporary cover on low to mid slopes to help temporarily stabilize disturbed areas where growing season constraints prevent effective reseeded. Disturbed areas should be properly mulched and tacked, or seeded, mulched and tacked promptly after final grade is reached (typically within no longer than 14 days) on portions of the site not otherwise permanently stabilized.

Standard dry mulching is encouraged in most jurisdictions; however, hydromulching may not be allowed in certain jurisdictions or may not be allowed near waterways.

Do not apply mulch during windy conditions.

Design and Installation

Prior to mulching, surface-roughen areas by rolling with a crimping or punching type roller or by track walking. Track walking should only be used where other methods are impractical because track walking with heavy equipment typically compacts the soil.

A variety of mulches can be used effectively at construction sites. Consider the following:

| Mulch | |
|--------------------------|----------|
| Functions | |
| Erosion Control | Yes |
| Sediment Control | Moderate |
| Site/Material Management | No |

June 2012 Urban Drainage and Flood Control District MU-1
Urban Storm Drainage Criteria Manual Volume 3

| REFERENCE DRAWINGS | SHEET KEY | |
|---|-----------|-----------------------|
| X-995-MDG2234 | | |
| No. | DATE | DESCRIPTION REVISIONS |
| COMPUTER FILE MANAGEMENT | | |
| FILE NAME: R:\18.995.001 (Liberty Tree Academy)\Dwg\Construction Plans\GEC\ECDT.dwg | | |
| CTB FILE: --- | | |
| PLOT DATE: 5/1/2018 3:42 PM | | |
| THIS DRAWING IS CURRENT AS OF PLOT DATE AND MAY BE SUBJECT TO CHANGE. | | |

PREPARED BY:

AN EMPLOYEE-OWNED COMPANY

SEAL

PRELIMINARY
THIS DRAWING HAS NOT BEEN APPROVED BY GOVERNING AGENCIES AND IS SUBJECT TO CHANGE

FOR AND ON BEHALF OF MATRIX DESIGN GROUP, INC.
PROJECT No. 18.995.001

LIBERTY TREE ACADEMY

TOWN OF PEYTON, EL PASO COUNTY
CONSTRUCTION DOCUMENTS

EROSION CONTROL DETAILS

| | | | |
|------------------|-------|-----------------------|-------------|
| DESIGNED BY: ACR | SCALE | DATE ISSUED: MAY 2018 | DRAWING No. |
| DRAWN BY: ACR | HORIZ | SHEET 13 OF 18 | ECDT01 |
| CHECKED BY: DRK | VERT | | |



Know what's below. Call before you dig.

EC-4 Mulching (MU)

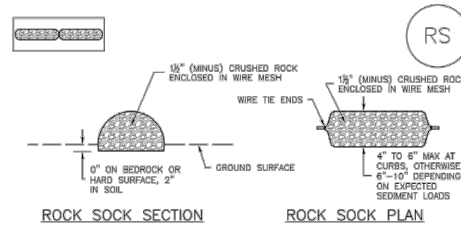
- Clean, weed-free and seed-free cereal grain straw should be applied evenly at a rate of 2 tons per acre and must be tacked or fastened by a method suitable for the condition of the site. Straw mulch must be anchored (and not merely placed) on the surface. This can be accomplished mechanically by crimping or with the aid of tackifiers or nets. Anchoring with a crimping implement is preferred, and is the recommended method for areas flatter than 3:1. Mechanical crimpers must be capable of tucking the long mulch fibers into the soil to a depth of 3 inches without cutting them. An agricultural disk, while not an ideal substitute, may work if the disk blades are dull or blunted and set vertically; however, the frame may have to be weighted to afford proper soil penetration.
Grass hay may be used in place of straw; however, because hay is comprised of the entire plant including seed, mulching with hay may seed the site with non-native grass species which might in turn out-compete the native seed. Alternatively, native species of grass hay may be purchased, but can be difficult to find and are more expensive than straw. Purchasing and utilizing a certified weed-free straw is an easier and less costly mulching method. When using grass hay, follow the same guidelines as for straw (provided above).
On small areas sheltered from the wind and heavy runoff, spraying a tackifier on the mulch is satisfactory for holding it in place. For steep slopes and special situations where greater control is needed, erosion control blankets anchored with stakes should be used instead of mulch.
Hydraulic mulching consists of wood cellulose fibers mixed with water and a tackifying agent and should be applied at a rate of no less than 1,500 pounds per acre (1,425 lbs of fibers mixed with at least 75 lbs of tackifier) with a hydraulic mulcher. For steeper slopes, up to 2000 pounds per acre may be required for effective hydromulching. Hydromulch typically requires up to 24 hours to dry; therefore, it should not be applied immediately prior to inclement weather. Application to roads, waterways and existing vegetation should be avoided.
Erosion control mats, blankets, or nets are recommended to help stabilize steep slopes (generally 3:1 and steeper) and waterways. Depending on the product, these may be used alone or in conjunction with grass or straw mulch. Normally, use of these products will be restricted to relatively small areas. Biodegradable mats made of straw and jute, straw-coconut, coconut fiber, or excelsior can be used instead of mulch. (See the ECM/TRM BMP for more information.)
Some tackifiers or binders may be used to anchor mulch. Check with the local jurisdiction for allowed tackifiers. Manufacturer's recommendations should be followed at all times. (See the Soil Binder BMP for more information on general types of tackifiers.)
Rock can also be used as mulch. It provides protection of exposed soils to wind and water erosion and allows infiltration of precipitation. An aggregate base course can be installed on a disturbed area for temporary or permanent stabilization. The rock mulch layer should be thick enough to provide full coverage of exposed soil on the area it is applied.

Maintenance and Removal

After mulching, the bare ground surface should not be more than 10 percent exposed. Reapply mulch, as needed, to cover bare areas.

MU-2 Urban Drainage and Flood Control District Urban Storm Drainage Criteria Manual Volume 3 June 2012

SC-5 Rock Sock (RS)



GRADATION TABLE
SIDE SIZE MASS PERCENT PASSING SQUARE MESH SIEVES
NO. 4
2" 100
1 1/2" 90 - 100
1 1/4" 80 - 95
3/4" 0 - 15
3/8" 0 - 5

- ROCK SOCK INSTALLATION NOTES
1. SEE PLAN VIEW FOR -LOCATION(S) OF ROCK SOCKS.
2. CRUSHED ROCK SHALL BE 1/2" (MINUS) IN SIZE WITH A FRACTURED FACE (ALL SIDES) AND SHALL COMPLY WITH GRADATION SHOWN ON THIS SHEET (1/2" MINUS).
3. WIRE MESH SHALL BE FABRICATED OF 10 GAGE POULTRY MESH, OR EQUIVALENT, WITH A MAXIMUM OPENING OF 1/2", RECOMMENDED MINIMUM ROLL WIDTH OF 48".
4. WIRE MESH SHALL BE SECURED USING "HOG RINGS" OR WIRE TIES AT 6" CENTERS ALONG ALL JOINTS AND AT 2" CENTERS ON ENDS OF SOCKS.
5. SOME MUNICIPALITIES MAY ALLOW THE USE OF FILTER FABRIC AS AN ALTERNATIVE TO WIRE MESH FOR THE ROCK ENCLOSURE.

RS-1. ROCK SOCK PERIMETER CONTROL

RS-2 Urban Drainage and Flood Control District Urban Storm Drainage Criteria Manual Volume 3 November 2010

Rock Sock (RS) SC-5

ROCK SOCK MAINTENANCE NOTES

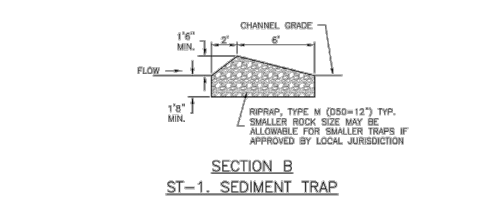
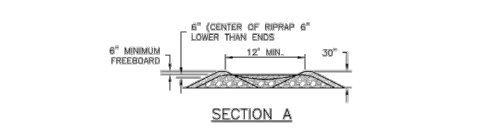
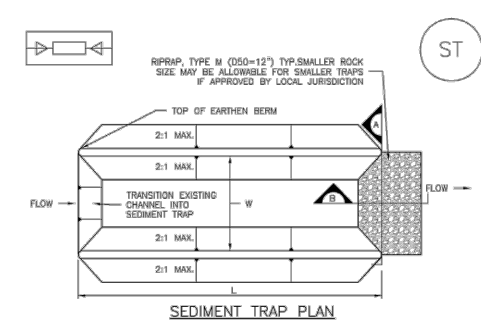
- 1. INSPECT BMPs EACH WORKDAY, AND MAINTAIN THEM IN EFFECTIVE OPERATING CONDITION. MAINTENANCE OF BMPs SHOULD BE PROACTIVE, NOT REACTIVE. INSPECT BMPs AS SOON AS POSSIBLE (AND ALWAYS WITHIN 24 HOURS) FOLLOWING A STORM THAT CAUSES SURFACE EROSION, AND PERFORM NECESSARY MAINTENANCE.
2. FREQUENT OBSERVATIONS AND MAINTENANCE ARE NECESSARY TO MAINTAIN BMPs IN EFFECTIVE OPERATING CONDITION. INSPECTIONS AND CORRECTIVE MEASURES SHOULD BE DOCUMENTED THOROUGHLY.
3. WHERE BMPs HAVE FAILED, REPAIR OR REPLACEMENT SHOULD BE INITIATED UPON DISCOVERY OF THE FAILURE.
4. ROCK SOCKS SHALL BE REPLACED IF THEY BECOME HEAVILY SOILED, OR DAMAGED BEYOND REPAIR.
5. SEDIMENT ACCUMULATED UPSTREAM OF ROCK SOCKS SHALL BE REMOVED AS NEEDED TO MAINTAIN FUNCTIONALITY OF THE BMP, TYPICALLY WHEN DEPTH OF ACCUMULATED SEDIMENTS IS APPROXIMATELY 1/2 OF THE HEIGHT OF THE ROCK SOCK.
6. ROCK SOCKS ARE TO REMAIN IN PLACE UNTIL THE UPSTREAM DISTURBED AREA IS STABILIZED AND APPROVED BY THE LOCAL JURISDICTION.
7. WHEN ROCK SOCKS ARE REMOVED, ALL DISTURBED AREAS SHALL BE COVERED WITH TOPSOIL, SEEDED AND MULCHED OR OTHERWISE STABILIZED AS APPROVED BY LOCAL JURISDICTION.

(DETAILS ADAPTED FROM TOWN OF PEYTON, COLORADO AND CITY OF AURORA, COLORADO, NOT AVAILABLE IN AURORA)

NOTE: THE DETAILS INCLUDED WITH THIS FACT SHEET SHOW COMMONLY USED, CONVENTIONAL METHODS OF ROCK SOCK INSTALLATION IN THE DENVER METROPOLITAN AREA. THERE ARE MANY OTHER SIMILAR PROPRIETARY PRODUCTS ON THE MARKET. UFCD NEITHER ENDORSES NOR DISCOURAGES USE OF PROPRIETARY PRODUCTS; HOWEVER, IN THE EVENT PROPRIETARY METHODS ARE USED, THE APPROPRIATE DETAIL FROM THE MANUFACTURER MUST BE INCLUDED IN THE BMP AND THE BMP MUST BE INSTALLED AND MAINTAINED AS SHOWN IN THE MANUFACTURER'S DETAILS.

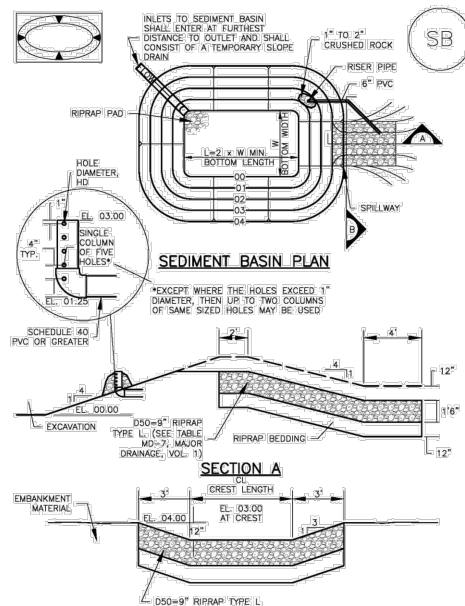
November 2010 Urban Drainage and Flood Control District Urban Storm Drainage Criteria Manual Volume 3 RS-3

SC-8 Sediment Trap (ST)



ST-2 Urban Drainage and Flood Control District Urban Storm Drainage Criteria Manual Volume 3 November 2010

Sediment Basin (SB) SC-7



August 2013 Urban Drainage and Flood Control District Urban Storm Drainage Criteria Manual Volume 3 SB-5

SC-7 Sediment Basin (SB)

TABLE SB-1. SIZING INFORMATION FOR STANDARD SEDIMENT BASIN
Upstream Drainage Area (rounded to nearest acre), (ac) Basin Bottom Width (W), (ft) Spillway Crest Length (CL), (ft) Hole Diameter (HD), (in)

- SEDIMENT BASIN INSTALLATION NOTES
1. SEE PLAN VIEW FOR:
-LOCATION OF SEDIMENT BASIN.
-TYPE OF BASIN (STANDARD BASIN OR NONSTANDARD BASIN).
-FOR STANDARD BASIN, BOTTOM WIDTH W, CREST LENGTH CL, AND HOLE DIAMETER, HD.
-FOR NONSTANDARD BASIN, SEE CONSTRUCTION DRAWINGS FOR DESIGN OF BASIN INCLUDING RISER HEIGHT H, NUMBER OF COLLUMS N, HOLE DIAMETER HD AND PIPE DIAMETER D.
2. FOR STANDARD BASIN, BOTTOM DIMENSION MAY BE MODIFIED AS LONG AS BOTTOM AREA IS NOT REDUCED.
3. SEDIMENT BASINS SHALL BE INSTALLED PRIOR TO ANY OTHER LAND-DISTURBING ACTIVITY THAT RELIES ON ON BASINS AS A STORMWATER CONTROL.
4. EMBANKMENT MATERIAL SHALL CONSIST OF SOIL FREE OF DEBRIS, ORGANIC MATERIAL, AND ROCKS OR CONCRETE GREATER THAN 3 INCHES AND SHALL HAVE A MINIMUM OF 15 PERCENT BY WEIGHT PASSING THE NO. 200 SIEVE.
5. EMBANKMENT MATERIAL SHALL BE COMPACTED TO AT LEAST 95 PERCENT OF MAXIMUM DENSITY IN ACCORDANCE WITH ASTM D698.
6. PIPE SCH 40 OR GREATER SHALL BE USED.
7. THE DETAILS SHOWN ON THESE SHEETS PERTAIN TO STANDARD SEDIMENT BASINS FOR DRAINAGE AREAS LESS THAN 15 ACRES. SEE CONSTRUCTION DRAWINGS FOR EMBANKMENT, STORAGE VOLUME, SPILLWAY, OUTLET, AND OUTLET PROTECTION DETAILS FOR ANY SEDIMENT BASINS THAT HAVE BEEN INDIVIDUALLY DESIGNED FOR DRAINAGE AREAS LARGER THAN 15 ACRES.

SB-6 Urban Drainage and Flood Control District Urban Storm Drainage Criteria Manual Volume 3 August 2013

Sediment Basin (SB) SC-7

SEDIMENT BASIN MAINTENANCE NOTES

- 1. INSPECT BMPs EACH WORKDAY, AND MAINTAIN THEM IN EFFECTIVE OPERATING CONDITION. MAINTENANCE OF BMPs SHOULD BE PROACTIVE, NOT REACTIVE. INSPECT BMPs AS SOON AS POSSIBLE (AND ALWAYS WITHIN 24 HOURS) FOLLOWING A STORM THAT CAUSES SURFACE EROSION, AND PERFORM NECESSARY MAINTENANCE.
2. FREQUENT OBSERVATIONS AND MAINTENANCE ARE NECESSARY TO MAINTAIN BMPs IN EFFECTIVE OPERATING CONDITION. INSPECTIONS AND CORRECTIVE MEASURES SHOULD BE DOCUMENTED THOROUGHLY.
3. WHERE BMPs HAVE FAILED, REPAIR OR REPLACEMENT SHOULD BE INITIATED UPON DISCOVERY OF THE FAILURE.
4. SEDIMENT ACCUMULATED IN BASIN SHALL BE REMOVED AS NEEDED TO MAINTAIN BMP EFFECTIVENESS, TYPICALLY WHEN SEDIMENT DEPTH REACHES ONE FOOT (I.E., TWO FEET BELOW THE SPILLWAY CREST).
5. SEDIMENT BASINS ARE TO REMAIN IN PLACE UNTIL THE UPSTREAM DISTURBED AREA IS STABILIZED AND GRASS COVER IS ACCEPTED BY THE LOCAL JURISDICTION.
6. WHEN SEDIMENT BASINS ARE REMOVED, ALL DISTURBED AREAS SHALL BE COVERED WITH TOPSOIL, SEEDED AND MULCHED OR OTHERWISE STABILIZED AS APPROVED BY LOCAL JURISDICTION.

(DETAILS ADAPTED FROM BOULDER COUNTY, COLORADO)

NOTE: MANY JURISDICTIONS HAVE BMP DETAILS THAT VARY FROM UFCD STANDARD DETAILS. CONSULT WITH LOCAL JURISDICTIONS AS TO WHICH DETAIL SHOULD BE USED WHEN DIFFERENCES ARE NOTED.

August 2013 Urban Drainage and Flood Control District Urban Storm Drainage Criteria Manual Volume 3 SB-7

Sediment Trap (ST) SC-8

SEDIMENT TRAP INSTALLATION NOTES

- 1. SEE PLAN VIEW FOR:
-LOCATION, LENGTH AND WIDTH OF SEDIMENT TRAP.
2. ONLY USE FOR DRAINAGE AREAS LESS THAN 1 ACRE.
3. SEDIMENT TRAPS SHALL BE INSTALLED PRIOR TO ANY UPGRADENT LAND-DISTURBING ACTIVITIES.
4. SEDIMENT TRAP BERM SHALL BE CONSTRUCTED FROM MATERIAL FROM EXCAVATION, THE BERM SHALL BE COMPACTED TO 95% OF THE MAXIMUM DENSITY IN ACCORDANCE WITH ASTM D698.
5. SEDIMENT TRAP OUTLET TO BE CONSTRUCTED OF RIPRAP, TYPE M (D50=12") TYP. SMALLER ROCK SIZE MAY BE ALLOWABLE FOR SMALLER TRAPS IF APPROVED BY LOCAL JURISDICTION.
6. THE TOP OF THE EARTHEN BERM SHALL BE A MINIMUM OF 6" HIGHER THAN THE TOP OF THE RIPRAP OUTLET STRUCTURE.
7. THE ENDS OF THE RIPRAP OUTLET STRUCTURE SHALL BE A MINIMUM OF 6" HIGHER THAN THE CENTER OF THE OUTLET STRUCTURE.

- SEDIMENT TRAP MAINTENANCE NOTES
1. INSPECT BMPs EACH WORKDAY, AND MAINTAIN THEM IN EFFECTIVE OPERATING CONDITION. MAINTENANCE OF BMPs SHOULD BE PROACTIVE, NOT REACTIVE. INSPECT BMPs AS SOON AS POSSIBLE (AND ALWAYS WITHIN 24 HOURS) FOLLOWING A STORM THAT CAUSES SURFACE EROSION, AND PERFORM NECESSARY MAINTENANCE.
2. FREQUENT OBSERVATIONS AND MAINTENANCE ARE NECESSARY TO MAINTAIN BMPs IN EFFECTIVE OPERATING CONDITION. INSPECTIONS AND CORRECTIVE MEASURES SHOULD BE DOCUMENTED THOROUGHLY.
3. WHERE BMPs HAVE FAILED, REPAIR OR REPLACEMENT SHOULD BE INITIATED UPON DISCOVERY OF THE FAILURE.
4. REMOVE SEDIMENT ACCUMULATED IN TRAP AS NEEDED TO MAINTAIN THE FUNCTIONALITY OF THE BMP, TYPICALLY WHEN THE SEDIMENT DEPTH REACHES 1/2 THE HEIGHT OF THE RIPRAP OUTLET.
5. SEDIMENT TRAPS SHALL REMAIN IN PLACE UNTIL THE UPSTREAM DISTURBED AREA IS STABILIZED AND APPROVED BY THE LOCAL JURISDICTION.
6. WHEN SEDIMENT TRAPS ARE REMOVED, THE DISTURBED AREA SHALL BE COVERED WITH TOPSOIL, SEEDED AND MULCHED OR OTHERWISE STABILIZED IN A MANNER APPROVED BY THE LOCAL JURISDICTION.

(DETAILS ADAPTED FROM BOULDER COUNTY, COLORADO, NOT AVAILABLE IN AURORA)

NOTE: MANY JURISDICTIONS HAVE BMP DETAILS THAT VARY FROM UFCD STANDARD DETAILS. CONSULT WITH LOCAL JURISDICTIONS AS TO WHICH DETAIL SHOULD BE USED WHEN DIFFERENCES ARE NOTED.

November 2010 Urban Drainage and Flood Control District Urban Storm Drainage Criteria Manual Volume 3 ST-3

REFERENCE DRAWINGS table with columns for No., DATE, DESCRIPTION, REVISIONS, and BY.

SHEET KEY with a north arrow and a grid of boxes for sheet identification.

PREPARED BY: Matrix DESIGN GROUP AN EMPLOYEE-OWNED COMPANY

SEAL PRELIMINARY THIS DRAWING HAS NOT BEEN APPROVED BY GOVERNING AGENCIES AND IS SUBJECT TO CHANGE

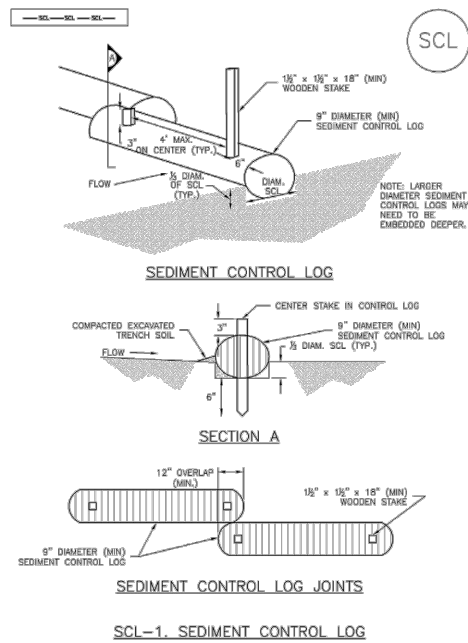
LIBERTY TREE ACADEMY TOWN OF PEYTON, EL PASO COUNTY CONSTRUCTION DOCUMENTS EROSION CONTROL DETAILS FOR AND ON BEHALF OF MATRIX DESIGN GROUP, INC. PROJECT No. 18.995.001



Know what's below.
Call before you dig.

Sediment Control Log (SCL)

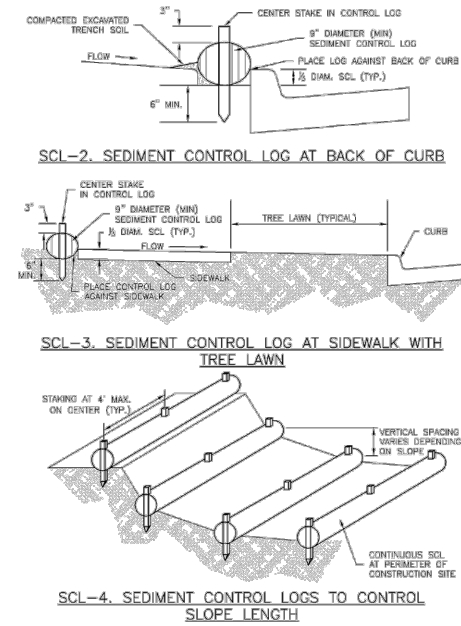
SC-2



November 2010 Urban Drainage and Flood Control District Urban Storm Drainage Criteria Manual Volume 3 SCL-3

Sediment Control Log (SCL)

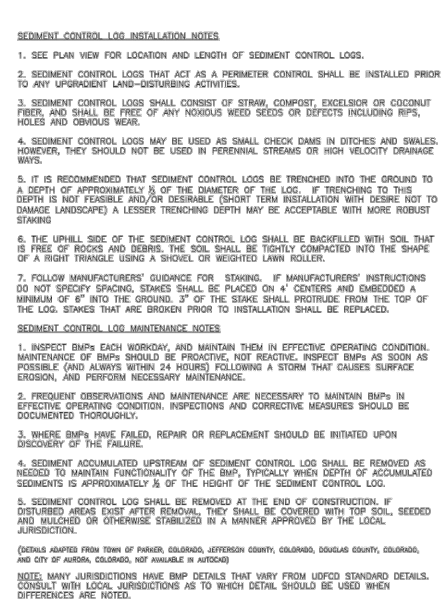
SC-2



November 2010 Urban Drainage and Flood Control District Urban Storm Drainage Criteria Manual Volume 3 SCL-4

Sediment Control Log (SCL)

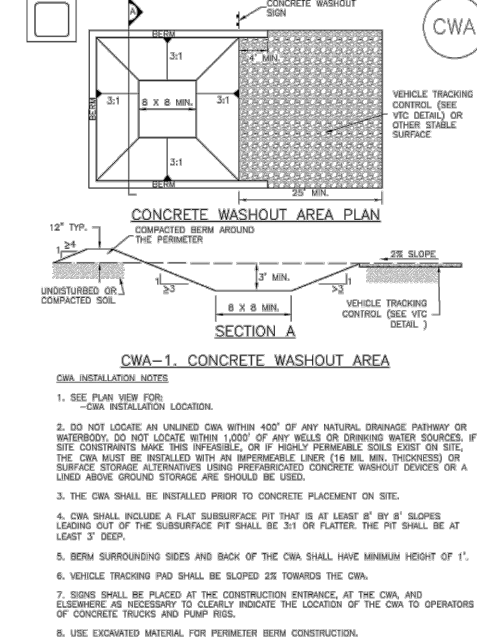
SC-2



November 2010 Urban Drainage and Flood Control District Urban Storm Drainage Criteria Manual Volume 3 SCL-5

Concrete Washout Area (CWA)

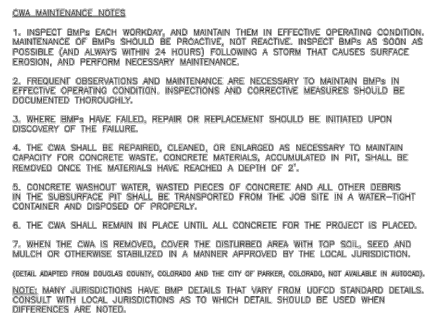
MM-1



November 2010 Urban Drainage and Flood Control District Urban Storm Drainage Criteria Manual Volume 3 CWA-3

Concrete Washout Area (CWA)

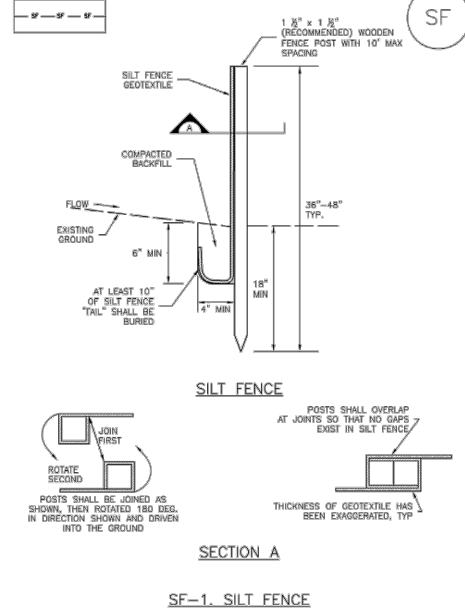
MM-1



November 2010 Urban Drainage and Flood Control District Urban Storm Drainage Criteria Manual Volume 3 CWA-4

Silt Fence (SF)

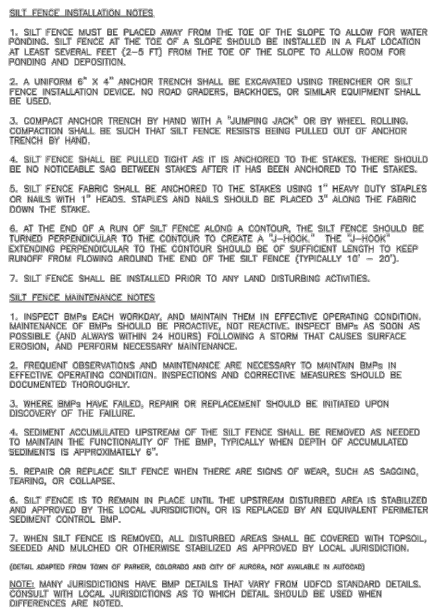
SC-1



November 2010 Urban Drainage and Flood Control District Urban Storm Drainage Criteria Manual Volume 3 SF-3

Silt Fence (SF)

SC-1



November 2010 Urban Drainage and Flood Control District Urban Storm Drainage Criteria Manual Volume 3 SF-4

| REFERENCE DRAWINGS | SHEET KEY | | |
|---|-----------|-----------------------|----|
| X-995-MDG22x34 | | | |
| | | | |
| | | | |
| No. | DATE | DESCRIPTION REVISIONS | BY |
| | | | |
| COMPUTER FILE MANAGEMENT | | | |
| FILE NAME: R:\18.995.001 (Liberty Tree Academy)\Dwg\Construction Plans\GEC\ECDT.dwg | | | |
| CTB FILE: --- | | | |
| PLOT DATE: 5/1/2018 3:42 PM | | | |
| THIS DRAWING IS CURRENT AS OF PLOT DATE AND MAY BE SUBJECT TO CHANGE. | | | |

SEAL

PRELIMINARY
THIS DRAWING HAS NOT BEEN APPROVED BY GOVERNING AGENCIES AND IS SUBJECT TO CHANGE

LIBERTY TREE ACADEMY
TOWN OF PEYTON, EL PASO COUNTY
CONSTRUCTION DOCUMENTS

EROSION CONTROL DETAILS

FOR AND ON BEHALF OF
MATRIX DESIGN GROUP, INC.
PROJECT No. 18.995.001

DESIGNED BY: ACR
DRAWN BY: ACR
CHECKED BY: DRK

SCALE
HORIZ
VERT

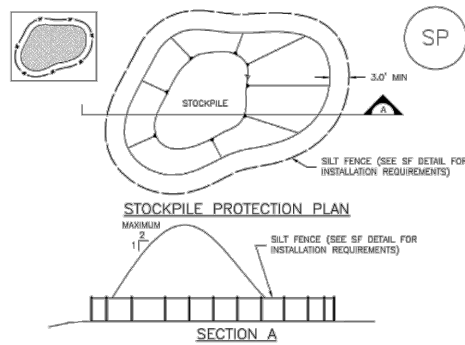
DATE ISSUED: MAY 2018
SHEET 15 OF 18

DRAWING No. ECDDT03

PREPARED BY:
Matrix
DESIGN GROUP
AN EMPLOYEE-OWNED COMPANY



Stockpile Management (SP) MM-2



SP-1. STOCKPILE PROTECTION

- STOCKPILE PROTECTION INSTALLATION NOTES**
- SEE PLAN VIEW FOR:
 - LOCATION OF STOCKPILES.
 - TYPE OF STOCKPILE PROTECTION.
 - INSTALL PERIMETER CONTROLS IN ACCORDANCE WITH THEIR RESPECTIVE DESIGN DETAILS. SILT FENCE IS SHOWN IN THE STOCKPILE PROTECTION DETAILS; HOWEVER, OTHER TYPES OF PERIMETER CONTROLS INCLUDING SEDIMENT CONTROL LOGS OR ROCK SOCKS MAY BE SUITABLE IN SOME CIRCUMSTANCES. CONSIDERATIONS FOR DETERMINING THE APPROPRIATE TYPE OF PERIMETER CONTROL FOR A STOCKPILE INCLUDE WHETHER THE STOCKPILE IS LOCATED ON A PERVIOUS OR IMPERVIOUS SURFACE, THE RELATIVE HEIGHTS OF THE PERIMETER CONTROL AND STOCKPILE, THE ABILITY OF THE PERIMETER CONTROL TO CONTAIN THE STOCKPILE WITHOUT FAILING IN THE EVENT THAT MATERIAL FROM THE STOCKPILE SHIFTS OR SLIPS AGAINST THE PERIMETER, AND OTHER FACTORS.
 - STABILIZE THE STOCKPILE SURFACE WITH SURFACE ROUGHENING, TEMPORARY SEEDING AND MULCHING, EROSION CONTROL BLANKETS, OR SOIL BINDERS. SOILS STOCKPILED FOR AN EXTENDED PERIOD (TYPICALLY FOR MORE THAN 60 DAYS) SHOULD BE SEEDED AND MULCHED WITH A TEMPORARY GRASS COVER ONCE THE STOCKPILE IS PLACED (TYPICALLY WITHIN 14 DAYS). USE OF MULCH ONLY OR A SOIL BINDER IS ACCEPTABLE IF THE STOCKPILE WILL BE IN PLACE FOR A MORE LIMITED TIME PERIOD (TYPICALLY 30-60 DAYS).
 - FOR TEMPORARY STOCKPILES ON THE INTERIOR PORTION OF A CONSTRUCTION SITE, WHERE OTHER DOWNSTREAM CONTROLS, INCLUDING PERIMETER CONTROLS, ARE IN PLACE, STOCKPILE PERIMETER CONTROLS MAY NOT BE REQUIRED.

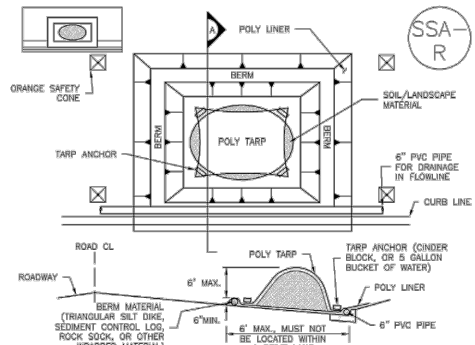
November 2010 Urban Drainage and Flood Control District Urban Storm Drainage Criteria Manual Volume 3 SP-3

MM-2 Stockpile Management (SM)

- STOCKPILE PROTECTION MAINTENANCE NOTES**
- INSPECT BMPs EACH WORKDAY, AND MAINTAIN THEM IN EFFECTIVE OPERATING CONDITION. MAINTENANCE OF BMPs SHOULD BE PROACTIVE, NOT REACTIVE. INSPECT BMPs AS SOON AS POSSIBLE (AND ALWAYS WITHIN 24 HOURS) FOLLOWING A STORM THAT CAUSES SURFACE EROSION, AND PERFORM NECESSARY MAINTENANCE.
 - FREQUENT OBSERVATIONS AND MAINTENANCE ARE NECESSARY TO MAINTAIN BMPs IN EFFECTIVE OPERATING CONDITION. INSPECTIONS AND CORRECTIVE MEASURES SHOULD BE DOCUMENTED THOROUGHLY.
 - WHERE BMPs HAVE FAILED, REPAIR OR REPLACEMENT SHOULD BE INITIATED UPON DISCOVERY OF THE FAILURE.
- STOCKPILE PROTECTION MAINTENANCE NOTES**
- IF PERIMETER PROTECTION MUST BE MOVED TO ACCESS SOIL STOCKPILE, REPLACE PERIMETER CONTROLS BY THE END OF THE WORKDAY.
 - STOCKPILE PERIMETER CONTROLS CAN BE REMOVED ONCE ALL THE MATERIAL FROM THE STOCKPILE HAS BEEN USED.
- (DETAILS ADAPTED FROM PARKER, COLORADO, NOT AVAILABLE IN AUTOCAD)
- NOTE: MANY JURISDICTIONS HAVE BMP DETAILS THAT VARY FROM UDFCD STANDARD DETAILS. CONSULT WITH LOCAL JURISDICTIONS AS TO WHICH DETAIL SHOULD BE USED WHEN DIFFERENCES ARE NOTED.

SP-4 Urban Drainage and Flood Control District Urban Storm Drainage Criteria Manual Volume 3 November 2010

Stockpile Management (SP) MM-2



SP-2. MATERIALS STAGING IN ROADWAY

- MATERIALS STAGING IN ROADWAYS INSTALLATION NOTES**
- SEE PLAN VIEW FOR:
 - LOCATION OF MATERIAL STAGING AREA(S).
 - CONTRACTOR MAY ADJUST LOCATION AND SIZE OF STAGING AREA WITH APPROVAL FROM THE LOCAL JURISDICTION.
 - FEATURE MUST BE INSTALLED PRIOR TO EXCAVATION, EARTHWORK OR DELIVERY OF MATERIALS.
 - MATERIALS MUST BE STAGED ON THE POLY LINER. ANY INCIDENTAL MATERIALS DEPOSITED ON PAVED SECTION OR ALONG CURB LINE MUST BE CLEANED UP PROMPTLY.
 - POLY LINER AND TARP COVER SHOULD BE OF SIGNIFICANT THICKNESS TO PREVENT DAMAGE OR LOSS OF INTEGRITY.
 - SAND BAGS MAY BE SUBSTITUTED TO ANCHOR THE COVER TARP OR PROVIDE BERMING UNDER THE BERM LINE.
 - FEATURE IS NOT INTENDED FOR USE WITH WET MATERIAL THAT WILL BE DRIVING AND/OR SPREADING OUT ON THE POLY LINER OR FOR DEMOLITION MATERIALS.
 - THIS FEATURE CAN BE USED FOR:
 - LULITY REPAIRS.
 - OTHER STAGING LOCATIONS AND OPTIONS ARE LIMITED.
 - OTHER LIMITED APPLICATION AND SHORT DURATION STAGING.

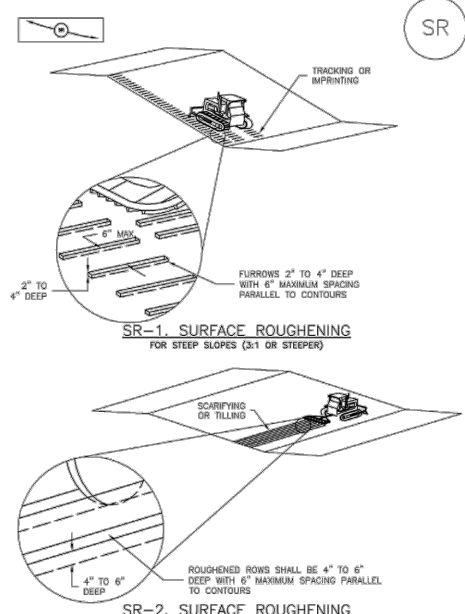
November 2010 Urban Drainage and Flood Control District Urban Storm Drainage Criteria Manual Volume 3 SP-5

MM-2 Stockpile Management (SM)

- MATERIALS STAGING IN ROADWAY MAINTENANCE NOTES**
- INSPECT BMPs EACH WORKDAY, AND MAINTAIN THEM IN EFFECTIVE OPERATING CONDITION. MAINTENANCE OF BMPs SHOULD BE PROACTIVE, NOT REACTIVE. INSPECT BMPs AS SOON AS POSSIBLE (AND ALWAYS WITHIN 24 HOURS) FOLLOWING A STORM THAT CAUSES SURFACE EROSION, AND PERFORM NECESSARY MAINTENANCE.
 - FREQUENT OBSERVATIONS AND MAINTENANCE ARE NECESSARY TO MAINTAIN BMPs IN EFFECTIVE OPERATING CONDITION. INSPECTIONS AND CORRECTIVE MEASURES SHOULD BE DOCUMENTED THOROUGHLY.
 - WHERE BMPs HAVE FAILED, REPAIR OR REPLACEMENT SHOULD BE INITIATED UPON DISCOVERY OF THE FAILURE.
 - INSPECT PVC PIPE ALONG CURB LINE FOR CLOGGING AND DEBRIS. REMOVE OBSTRUCTIONS PROMPTLY.
 - CLEAN MATERIAL FROM PAVED SURFACES BY SWEEPING OR VACUUMING.
- NOTE: MANY JURISDICTIONS HAVE BMP DETAILS THAT VARY FROM UDFCD STANDARD DETAILS. CONSULT WITH LOCAL JURISDICTIONS AS TO WHICH DETAIL SHOULD BE USED WHEN DIFFERENCES ARE NOTED.
- (DETAILS ADAPTED FROM AURORA, COLORADO)

SP-6 Urban Drainage and Flood Control District Urban Storm Drainage Criteria Manual Volume 3 November 2010

Surface Roughening (SR) EC-1



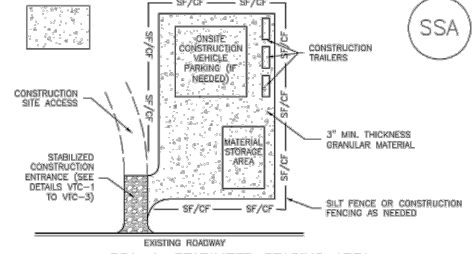
November 2010 Urban Drainage and Flood Control District Urban Storm Drainage Criteria Manual Volume 3 SR-3

EC-1 Surface Roughening (SR)

- SURFACE ROUGHENING INSTALLATION NOTES**
- SEE PLAN VIEW FOR:
 - LOCATION(S) OF SURFACE ROUGHENING.
 - SURFACE ROUGHENING SHALL BE PROVIDED PROMPTLY AFTER COMPLETION OF FINISHED GRADING (FOR AREAS NOT RECEIVING TOPSOIL) OR PRIOR TO TOPSOIL PLACEMENT OR ANY FORECASTED RAIN EVENT.
 - AREAS WHERE BUILDING FOUNDATIONS, PAVEMENT, OR SOD WILL BE PLACED WITHOUT DELAY IN THE CONSTRUCTION SEQUENCE, SURFACE ROUGHENING IS NOT REQUIRED.
 - DISTURBED SURFACES SHALL BE ROUGHENED USING RIPPING OR TILLING EQUIPMENT ON THE CONTOUR OR TRACKING UP AND DOWN A SLOPE USING EQUIPMENT TREADS.
 - A FARMING DISK SHALL NOT BE USED FOR SURFACE ROUGHENING.
- SURFACE ROUGHENING MAINTENANCE NOTES**
- INSPECT BMPs EACH WORKDAY, AND MAINTAIN THEM IN EFFECTIVE OPERATING CONDITION. MAINTENANCE OF BMPs SHOULD BE PROACTIVE, NOT REACTIVE. INSPECT BMPs AS SOON AS POSSIBLE (AND ALWAYS WITHIN 24 HOURS) FOLLOWING A STORM THAT CAUSES SURFACE EROSION, AND PERFORM NECESSARY MAINTENANCE.
 - FREQUENT OBSERVATIONS AND MAINTENANCE ARE NECESSARY TO MAINTAIN BMPs IN EFFECTIVE OPERATING CONDITION. INSPECTIONS AND CORRECTIVE MEASURES SHOULD BE DOCUMENTED THOROUGHLY.
 - WHERE BMPs HAVE FAILED, REPAIR OR REPLACE UPON DISCOVERY OF THE FAILURE.
 - VEHICLES AND EQUIPMENT SHALL NOT BE DRIVEN OVER AREAS THAT HAVE BEEN SURFACE ROUGHENED.
 - IN NON-TURF GRASS FINISHED AREAS, SEEDING AND MULCHING SHALL TAKE PLACE DIRECTLY OVER SURFACE ROUGHENED AREAS WITHOUT FIRST SMOOTHING OUT THE SURFACE.
 - IN AREAS NOT SEEDED AND MULCHED AFTER SURFACE ROUGHENING, SURFACES SHALL BE RE-ROUGHENED AS NECESSARY TO MAINTAIN GROOVE DEPTH AND SMOOTH OVER FILL EROSION.
- (DETAILS ADAPTED FROM TOWN OF PARKER, COLORADO, NOT AVAILABLE IN AUTOCAD)
- NOTE: MANY JURISDICTIONS HAVE BMP DETAILS THAT VARY FROM UDFCD STANDARD DETAILS. CONSULT WITH LOCAL JURISDICTIONS AS TO WHICH DETAIL SHOULD BE USED WHEN DIFFERENCES ARE NOTED.

SR-4 Urban Drainage and Flood Control District Urban Storm Drainage Criteria Manual Volume 3 November 2010

Stabilized Staging Area (SSA) SM-6



SSA-1. STABILIZED STAGING AREA

- STABILIZED STAGING AREA INSTALLATION NOTES**
- SEE PLAN VIEW FOR:
 - LOCATION OF STAGING AREA(S).
 - CONTRACTOR MAY ADJUST LOCATION AND SIZE OF STAGING AREA WITH APPROVAL FROM THE LOCAL JURISDICTION.
 - STABILIZED STAGING AREA SHOULD BE APPROPRIATE FOR THE NEEDS OF THE SITE. OVERSIZING RESULTS IN A LARGER AREA TO STABILIZE FOLLOWING CONSTRUCTION.
 - STAGING AREA SHALL BE STABILIZED PRIOR TO OTHER OPERATIONS ON THE SITE.
 - THE STABILIZED STAGING AREA SHALL CONSIST OF A MINIMUM 3" THICK GRANULAR MATERIAL.
 - UNLESS OTHERWISE SPECIFIED BY LOCAL JURISDICTION, ROCK SHALL CONSIST OF DOT SECT. #703, AASHTO #3 COARSE AGGREGATE OR 6" (MINUS) ROCK.
 - ADDITIONAL PERIMETER BMPs MAY BE REQUIRED INCLUDING BUT NOT LIMITED TO SILT FENCE AND CONSTRUCTION FENCING.
- STABILIZED STAGING AREA MAINTENANCE NOTES**
- INSPECT BMPs EACH WORKDAY, AND MAINTAIN THEM IN EFFECTIVE OPERATING CONDITION. MAINTENANCE OF BMPs SHOULD BE PROACTIVE, NOT REACTIVE. INSPECT BMPs AS SOON AS POSSIBLE (AND ALWAYS WITHIN 24 HOURS) FOLLOWING A STORM THAT CAUSES SURFACE EROSION, AND PERFORM NECESSARY MAINTENANCE.
 - FREQUENT OBSERVATIONS AND MAINTENANCE ARE NECESSARY TO MAINTAIN BMPs IN EFFECTIVE OPERATING CONDITION. INSPECTIONS AND CORRECTIVE MEASURES SHOULD BE DOCUMENTED THOROUGHLY.
 - WHERE BMPs HAVE FAILED, REPAIR OR REPLACEMENT SHOULD BE INITIATED UPON DISCOVERY OF THE FAILURE.
 - ROCK SHALL BE REAPPLIED OR REGRADED AS NECESSARY IF RUTTING OCCURS OR UNDERLYING SUBGRADE BECOMES EXPOSED.

November 2010 Urban Drainage and Flood Control District Urban Storm Drainage Criteria Manual Volume 3 SSA-3

SM-6 Stabilized Staging Area (SSA)

- STABILIZED STAGING AREA MAINTENANCE NOTES**
- STABILIZED STAGING AREA SHALL BE ENLARGED IF NECESSARY TO CONTAIN PARKING, STORAGE, AND UNLOADING/LOADING OPERATIONS.
 - THE STABILIZED STAGING AREA SHALL BE REMOVED AT THE END OF CONSTRUCTION. THE GRANULAR MATERIAL SHALL BE REMOVED OR, IF APPROVED BY THE LOCAL JURISDICTION, USED ON SITE, AND THE AREA COVERED WITH TOPSOIL, SEEDED AND MULCHED OR OTHERWISE STABILIZED IN A MANNER APPROVED BY LOCAL JURISDICTION.
 - NOTE: MANY MUNICIPALITIES PROHIBIT THE USE OF RECYCLED CONCRETE AS GRANULAR MATERIAL FOR STABILIZED STAGING AREAS DUE TO DIFFICULTIES WITH RE-ESTABLISHMENT OF VEGETATION IN AREAS WHERE RECYCLED CONCRETE WAS PLACED.
 - NOTE: MANY JURISDICTIONS HAVE BMP DETAILS THAT VARY FROM UDFCD STANDARD DETAILS. CONSULT WITH LOCAL JURISDICTIONS AS TO WHICH DETAIL SHOULD BE USED WHEN DIFFERENCES ARE NOTED.
- (DETAILS ADAPTED FROM DOUGLAS COUNTY, COLORADO, NOT AVAILABLE IN AUTOCAD)

SSA-4 Urban Drainage and Flood Control District Urban Storm Drainage Criteria Manual Volume 3 November 2010

| REFERENCE DRAWINGS | SHEET KEY | | |
|---|-----------|-----------------------|----|
| X-995-MDG223-34 | | | |
| | | | |
| | | | |
| No. | DATE | DESCRIPTION REVISIONS | BY |
| COMPUTER FILE MANAGEMENT | | | |
| FILE NAME: R:\18.995.001 (Liberty Tree Academy)\Dwg\Construction Plans\GEC\ECDT.dwg | | | |
| CTB FILE: --- | | | |
| PLOT DATE: 5/1/2018 3:42 PM | | | |
| THIS DRAWING IS CURRENT AS OF PLOT DATE AND MAY BE SUBJECT TO CHANGE. | | | |

PREPARED BY:

AN EMPLOYEE-OWNED COMPANY

SEAL

PRELIMINARY
THIS DRAWING HAS NOT BEEN APPROVED BY GOVERNING AGENCIES AND IS SUBJECT TO CHANGE

FOR AND ON BEHALF OF
MATRIX DESIGN GROUP, INC.
PROJECT No. 18.995.001

LIBERTY TREE ACADEMY

TOWN OF PEYTON, EL PASO COUNTY
CONSTRUCTION DOCUMENTS








EROSION CONTROL DETAILS

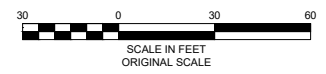
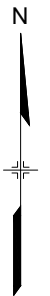
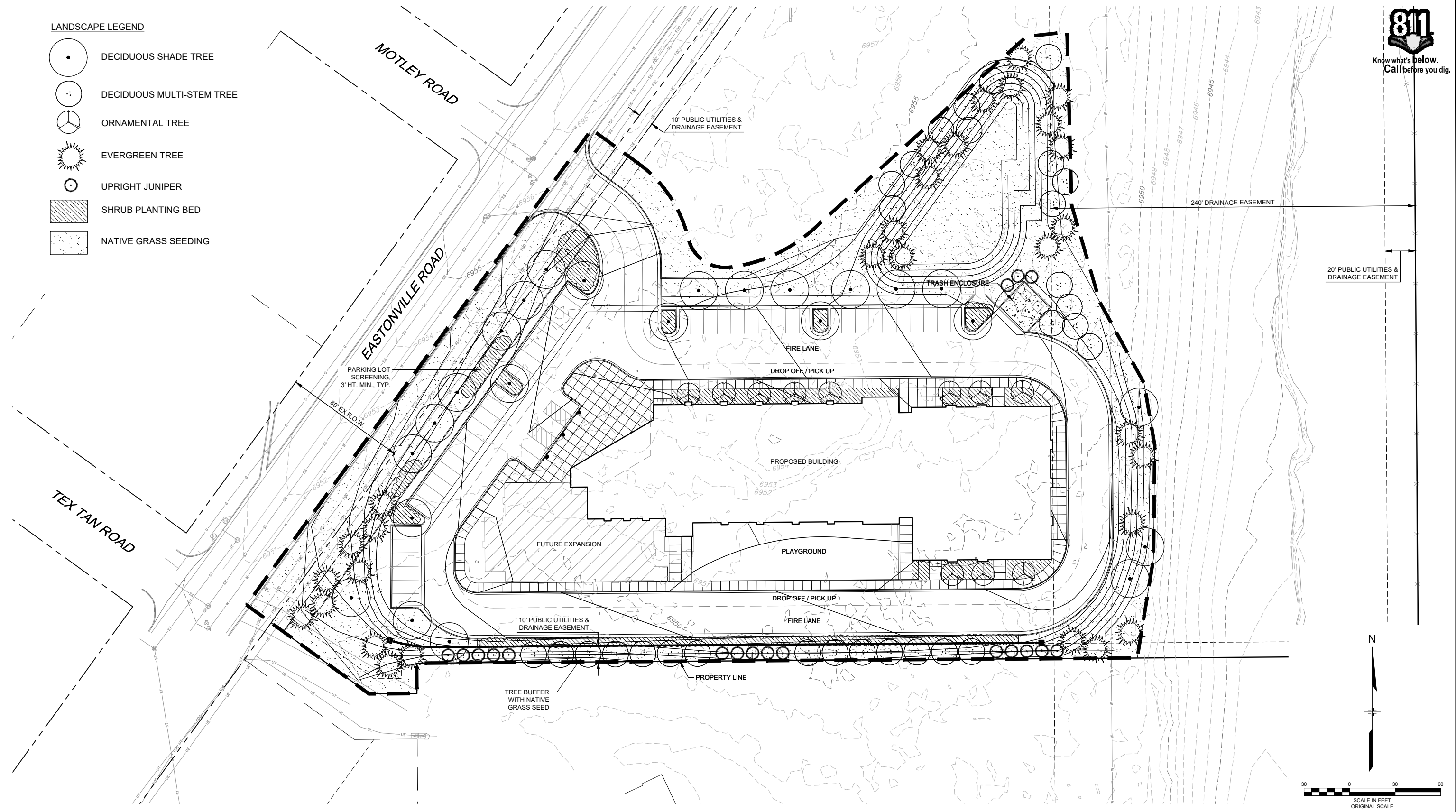
| | | | |
|------------------|-------|-----------------------|-------------|
| DESIGNED BY: ACR | SCALE | DATE ISSUED: MAY 2018 | DRAWING No. |
| DRAWN BY: ACR | HORIZ | SHEET 16 OF 18 | ECDT04 |
| CHECKED BY: DRK | VERT. | | |



Know what's below.
Call before you dig.

LANDSCAPE LEGEND

-  DECIDUOUS SHADE TREE
-  DECIDUOUS MULTI-STEM TREE
-  ORNAMENTAL TREE
-  EVERGREEN TREE
-  UPRIGHT JUNIPER
-  SHRUB PLANTING BED
-  NATIVE GRASS SEEDING



| No. | DATE | DESCRIPTION | BY |
|---|------|-------------|----|
| COMPUTER FILE MANAGEMENT | | | |
| FILE NAME: R:\18.995.001 (Liberty Tree Academy)\Dwg\Construction Plans\Landscape\LS01.dwg | | | |
| CTB FILE: --- | | | |
| PLOT DATE: 5/1/2018 3:42 PM | | | |
| THIS DRAWING IS CURRENT AS OF PLOT DATE AND MAY BE SUBJECT TO CHANGE. | | | |

| SHEET KEY | SEAL |
|-----------|---|
| | <p>PRELIMINARY THIS DRAWING HAS NOT BEEN APPROVED BY GOVERNING AGENCIES AND IS SUBJECT TO CHANGE</p> |

PREPARED BY:



AN EMPLOYEE-OWNED COMPANY

| | | | |
|--|--------------|-----------------------|------------------|
| LIBERTY TREE ACADEMY | | | |
| TOWN OF PEYTON, EL PASO COUNTY CONSTRUCTION DOCUMENTS | | | |
| LANDSCAPE PLAN | | | |
| DESIGNED BY: ACR | SCALE: HORIZ | DATE ISSUED: MAY 2018 | DRAWING No. LS01 |
| CHECKED BY: DRK | VERT. | SHEET 18 OF 18 | |

FOR AND ON BEHALF OF
MATRIX DESIGN GROUP, INC.
PROJECT No. 18.995.001

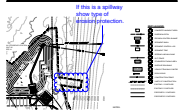
Markup Summary

dsdrice (8)



Subject: Callout
Page Label: [1] TS01 TS01
Author: dsdrice
Date: 6/14/2018 11:01:37 AM
Color: ■

Provide



Subject: Cloud+
Page Label: [11] EC02 EC02
Author: dsdrice
Date: 6/14/2018 11:03:14 AM
Color: ■

If this is a spillway show type of erosion protection.



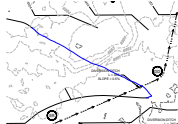
Subject: Cloud+
Page Label: [9] SD01 SD01
Author: dsdrice
Date: 6/14/2018 11:31:39 AM
Color: ■

Pipe doesn't match. Address outfall protection.



Subject: Cloud+
Page Label: [1] TS01 TS01
Author: dsdrice
Date: 6/14/2018 2:59:34 PM
Color: ■

Delete/revise with final.



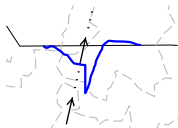
Subject: Pen
Page Label: [10] EC01 EC01
Author: dsdrice
Date: 6/15/2018 12:46:01 PM
Color: ■

initial contours?



Subject: Pen
Page Label: [10] EC01 EC01
Author: dsdrice
Date: 6/15/2018 12:46:10 PM
Color: ■

initial contours?



Subject: Pen
Page Label: [10] EC01 EC01
Author: dsdrice
Date: 6/15/2018 12:46:10 PM
Color: ■

initial contours?



Subject: Pen
Page Label: [10] EC01 EC01
Author: dsdrice
Date: 6/15/2018 12:46:10 PM
Color: ■

initial contours?