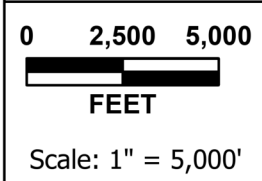


Legend

	Proposed Water Main Option 1		Name
	Proposed Water Main Option 2		4-Way Ranch MD
	Proposed Water Main Option 3		Bar-X
	Colorado Springs Utilities		Flying Horse North
	Falcon Highlands MD		Jaynes Property
	Meridian Ranch MD		McCune Ranch
	Paint Brush Hills MD		Raygor
	Sterling Ranch MD		Retreat
	The Sanctuary MD		Schmidt
	Woodmen Hills MD		Shamrock West
	Sundance		Stimple
			The Ranch



FALCON WATER AUTHORITY
 272.02 BAR X 1041
APPENDIX D - METROPOLITAN DISTRICTS

CONSULTANTS, INC.
 5540 TECH CENTER DR., SUITE 100
 COLORADO SPRINGS, CO 80919
 (719) 227-0072

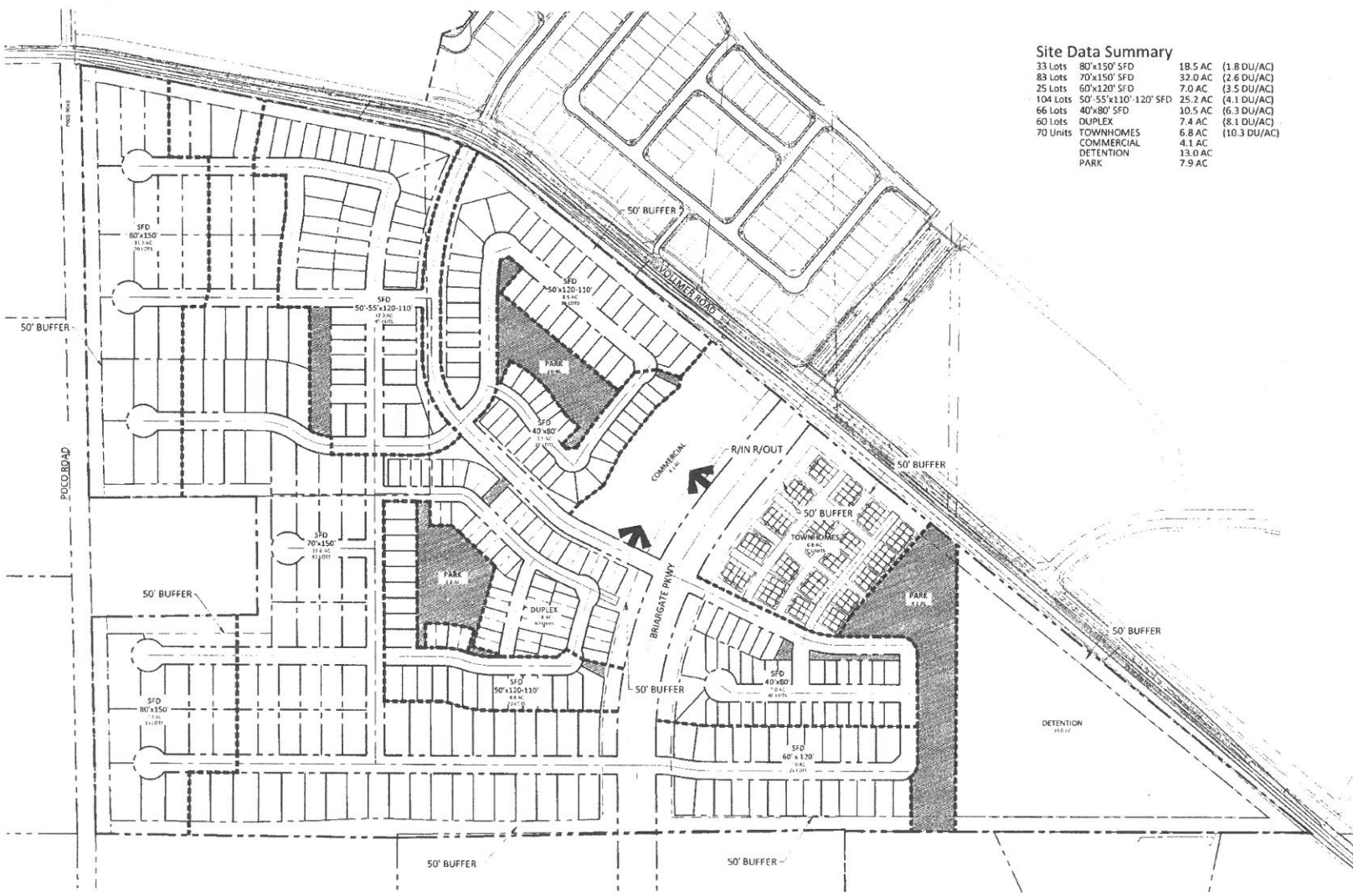
PRELIMINARY



N.E.S. Inc.
 619 N. Cascade Avenue, Suite 200
 Colorado Springs, CO 80903
 Tel: 719.471.0873
 Fax: 719.471.0267
 www.nescolorado.com
 © 2011 All Rights Reserved.

Site Data Summary

33 Lots	80'x150' SFD	19.5 AC	(1.8 DU/AC)
83 Lots	70'x150' SFD	32.0 AC	(2.6 DU/AC)
25 Lots	60'x120' SFD	7.0 AC	(3.5 DU/AC)
104 Lots	50'x55'x110'-120' SFD	25.2 AC	(4.1 DU/AC)
66 Lots	40'x80' SFD	10.5 AC	(6.3 DU/AC)
60 Lots	DUPLEX	7.4 AC	(8.1 DU/AC)
70 Units	TOWNHOMES	6.8 AC	(10.3 DU/AC)
	COMMERCIAL	4.1 AC	
	DETENTION	13.0 AC	
	PARK	7.9 AC	

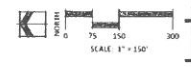


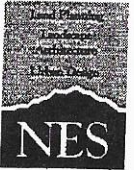
JAYNE'S PROPERTY

VOLMER ROAD
 TAX ID: 522800024 &
 522800025
 DATE: 11-29-2011
 PROJECT NO: A. BARRON
 PREPARED BY: B. BARRON

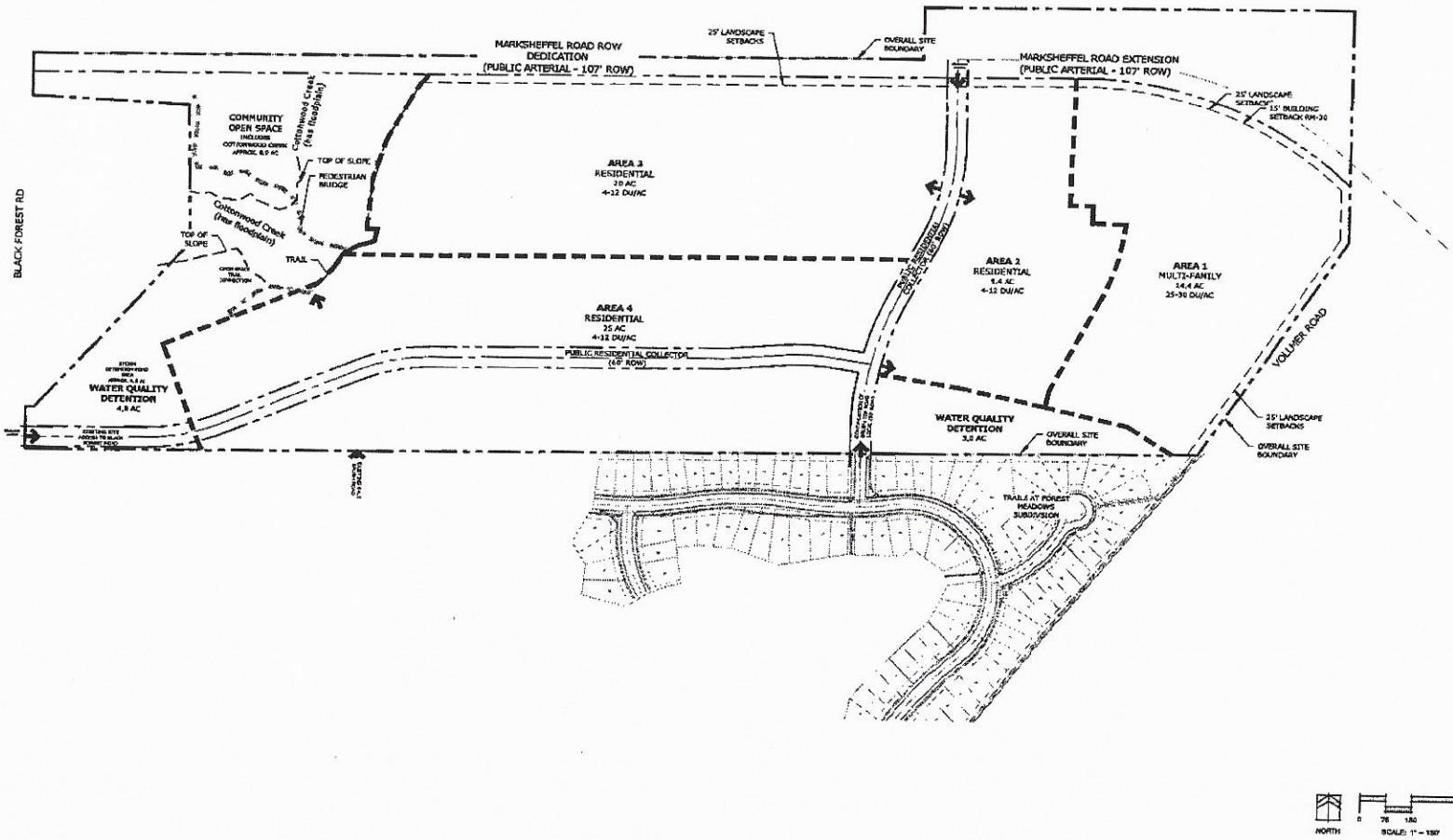
SCHEMATIC LAYOUT

SCHEMATIC LAYOUT-1





NES, Inc.
 919 N. Cascade Avenue, Suite 200
 Colorado Springs, CO 80903
 Tel. 719.471.0073
 Fax 719.471.6367
 www.nescolorado.com
 © 2013. All Rights Reserved.

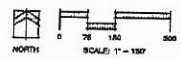


SCHMIDT PROPERTY
 SCHEMATIC LAYOUT

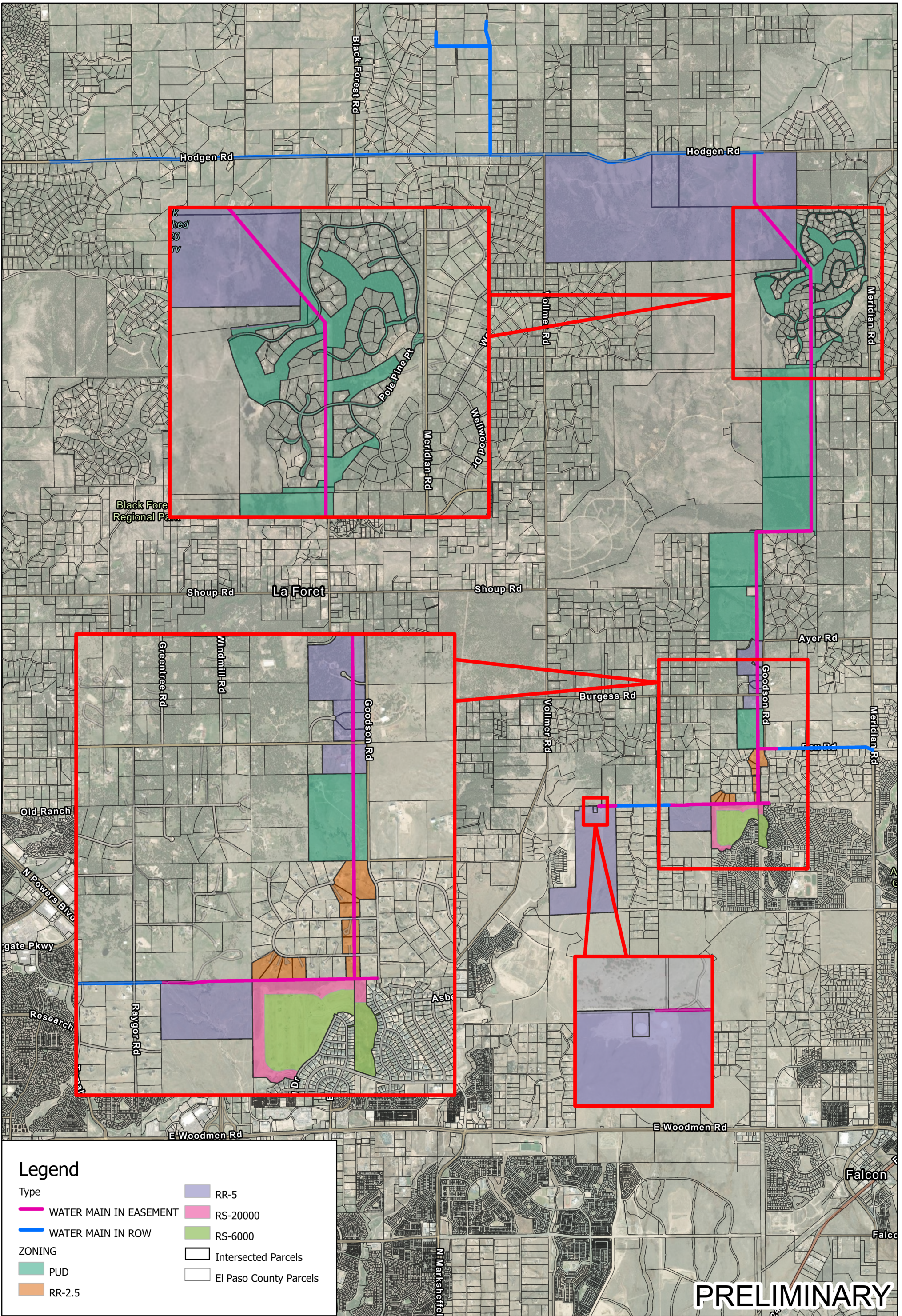
DATE: PROJECT FILE: PREPARED BY: N. S. JONES A. S. JONES B. JONES

OVERALL LAND USE CONCEPT

1

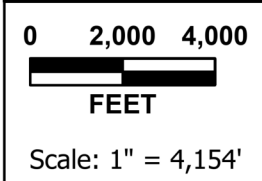


© 2013 NES, Inc. All Rights Reserved. This document is the property of NES, Inc. and is not to be distributed, copied, or reproduced without the written consent of NES, Inc.



Legend

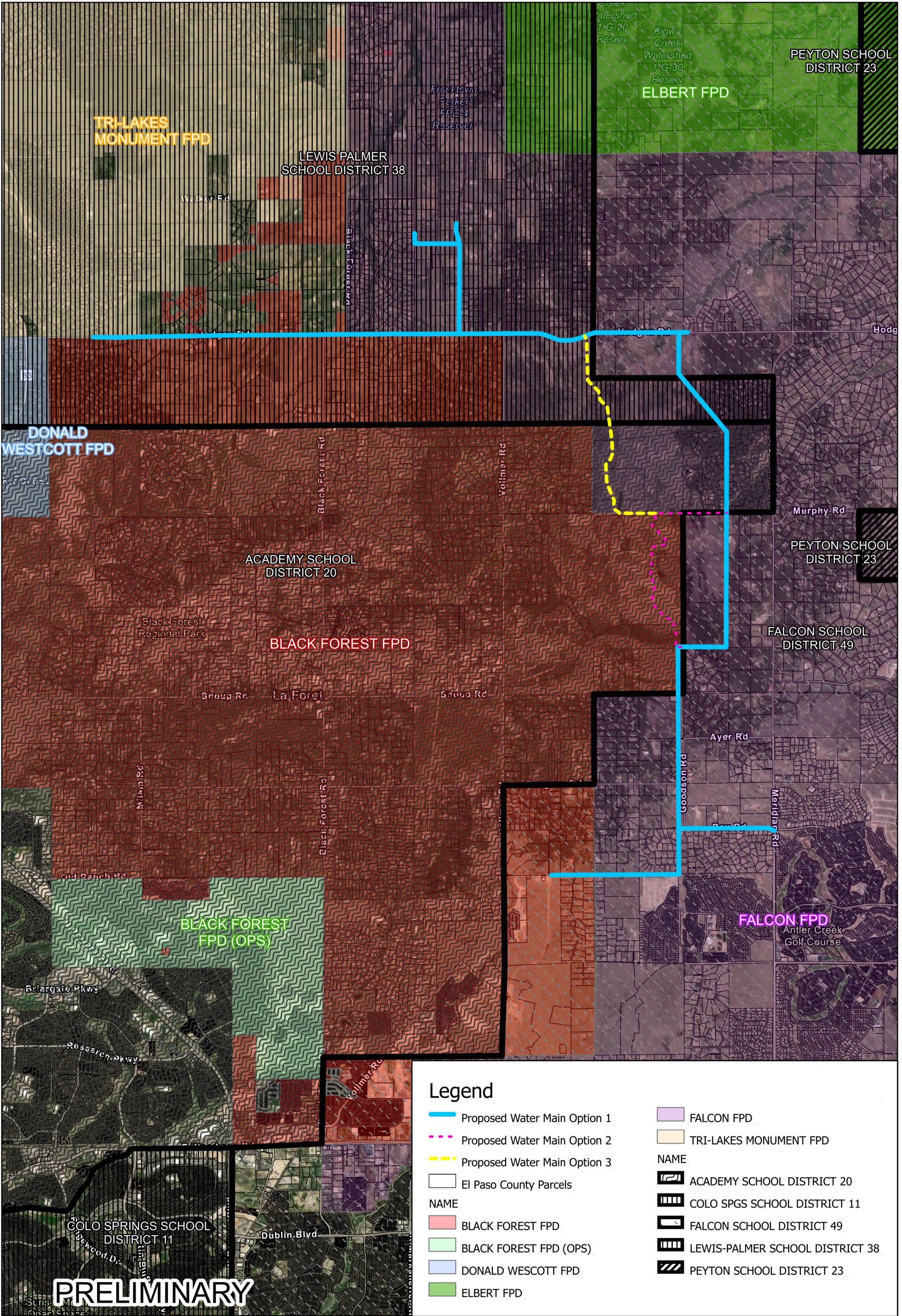
- | | |
|------------------------|------------------------|
| Type | RR-5 |
| WATER MAIN IN EASEMENT | RS-20000 |
| WATER MAIN IN ROW | RS-6000 |
| ZONING | Intersected Parcels |
| PUD | El Paso County Parcels |
| RR-2.5 | |



FALCON WATER AUTHORITY
 272.02 BAR X 1041
APPENDIX R - ROW AND EASEMENT MAP

PRELIMINARY

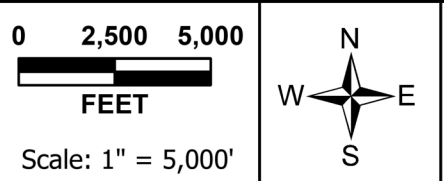
JDS-HYDRO CONSULTANTS, INC.
 5540 TECH CENTER DR., SUITE 100
 COLORADO SPRINGS, CO 80919
 (719) 227-0072



Legend

- Proposed Water Main Option 1
- - - Proposed Water Main Option 2
- - - Proposed Water Main Option 3
- El Paso County Parcels
- NAME**
- BLACK FOREST FPD
- BLACK FOREST FPD (OPS)
- DONALD WESCOTT FPD
- ELBERT FPD
- FALCON FPD
- TRI-LAKES MONUMENT FPD
- NAME**
- ACADEMY SCHOOL DISTRICT 20
- COLO SPGS SCHOOL DISTRICT 11
- FALCON SCHOOL DISTRICT 49
- LEWIS-PALMER SCHOOL DISTRICT 38
- PEYTON SCHOOL DISTRICT 23

PRELIMINARY



FALCON WATER AUTHORITY
 272.02 BAR X 1041
APPENDIX S - SCHOOL AND FIRE DISTRICT MAP

JDS-HYDRO CONSULTANTS, INC.
 5540 TECH CENTER DR., SUITE 100
 COLORADO SPRINGS, CO 80919
 (719) 227-0072