

0 500' 1000'

SCALE 11x17: 1" = 1000'

SCALE 24x36: 1" = 500'

NOTE:
AERIAL IMAGERY IS NOT ACCURATELY SCALED AND SHOULD BE UTILIZED FOR REFERENCE ONLY

LEGEND:

24" PIPE	
16" PIPE	
12" PIPE	
10" PIPE	
8" PIPE	
6" PIPE	
WELL	

JDS-HYDRO CONSULTANTS, INC.
 5640 TECH CENTER DR., SUITE 100
 COLORADO SPRINGS, COLORADO 80919
 (719) 227-0072

REGULATIONS, THE CONTRACTOR SHALL VERIFY ALL DIMENSIONS. ANY ERRORS OR OMISSIONS SHALL BE REPORTED TO JDS-HYDRO CONSULTANTS, INC. JDS-HYDRO ASSUMES NO LIABILITY FOR UNAUTHORIZED CHANGES AND/OR REVISIONS MADE TO PLANS.

FALCON WATER AUTHORITY
 WATER TRANSMISSION LINE
 BAR-X DECREED WELLS

NO.	DESCRIPTION	BY	APP.	DATE
1				
2				
3				
4				
5				
6				
7				

EXHIBIT

Project No.: 272.01
 Date: 11/27/19
 Design: JPM
 Drawn: SNW
 Check: JPM

2022/03/08 10:20 AM By: Shelby Gatlin N:\Projects\272 Falcon Water Authority\272.01 Bar-X Water Transmission Line\Drawings\Exhibits\27201_Well-Field.dwg

2022/03/08 10:21 AM By: Shelby Gatlin N:\Projects\272 Falcon Water Authority\272.01 Bar-X Water Transmission Line\Drawings\Exhibits\27201_Updated_Well_Location.dwg

SCALE 11x17: 1" = 750'
SCALE 24x36: 1" = 375'

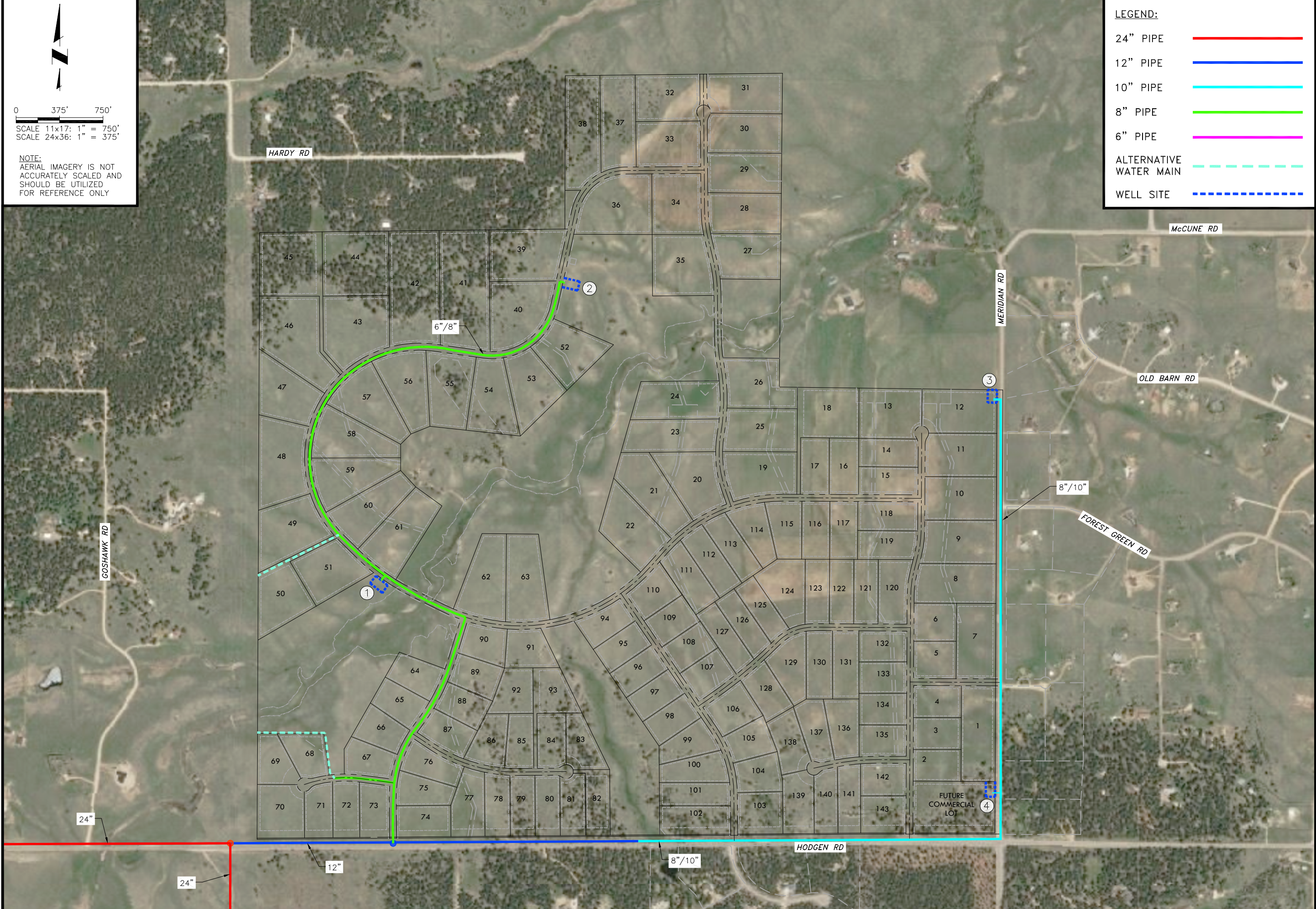
NOTE:
AERIAL IMAGERY IS NOT ACCURATELY SCALED AND SHOULD BE UTILIZED FOR REFERENCE ONLY

LEGEND:

- 24" PIPE ———
- 12" PIPE ———
- 10" PIPE ———
- 8" PIPE ———
- 6" PIPE ———
- ALTERNATIVE WATER MAIN - - - -
- WELL SITE - - - -

JDS-HYDRO CONSULTANTS, INC.
5540 TECH CENTER DRIVE, SUITE 100
COLORADO SPRINGS, COLORADO 80919
(719) 227-0072

DISCLAIMER: THE CONTRACTOR SHALL VERIFY ALL DIMENSIONS. ANY ERRORS OR OMISSIONS SHALL BE REPORTED TO JDS-HYDRO CONSULTANTS, INC. JDS-HYDRO ASSUMES NO LIABILITY FOR UNAUTHORIZED CHANGES AND/OR REVISIONS MADE TO PLANS.



PT MCCUNE, LLC
WATER TRANSMISSION LINE
WINSOME RANCH WELL AND TRANSMISSION LINE LOCATION

NO.	DESCRIPTION	BY	APP.	DATE
1				
2				
3				
4				
5				
6				
7				

EXHIBIT

Project No.: 272.01
Date: 11/27/19
Design: DES
Drawn: SNW
Check: JPM

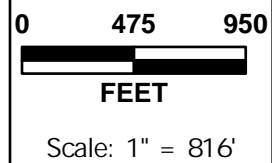
C

SHEET OF



Legend

- Well Site Number
- Water Main



FALCON WATER AUTHORITY
272.02 BAR X 1041
HIGH FOREST RANCH SUBDIVISION - WELL LOCATION EXHIBIT

JDS-HYDRO CONSULTANTS, INC.
5540 TECH CENTER DR., SUITE 100
COLORADO SPRINGS, CO 80919
(719) 227-0072