

## **The Retreat @TimberRidge**

### **Visual Analysis**

In addition to the Visual Analysis maps found in the Land Suitability Analysis, the following information is presented as an example. The key map and six photos are of a portion of the site where scrub trees and vegetation associated with erosion exist and where development is proposed. The first two photographs are within the proposed neighborhood park. Photo 3 shows the general location of the proposed Aspen Valley Parkway crossing of the eroded area. Photos 4 and 5 are views up the eroded area. Photo 6 is a view of the Aspen Valley Parkway crossing of the eroded area from a different perspective.

























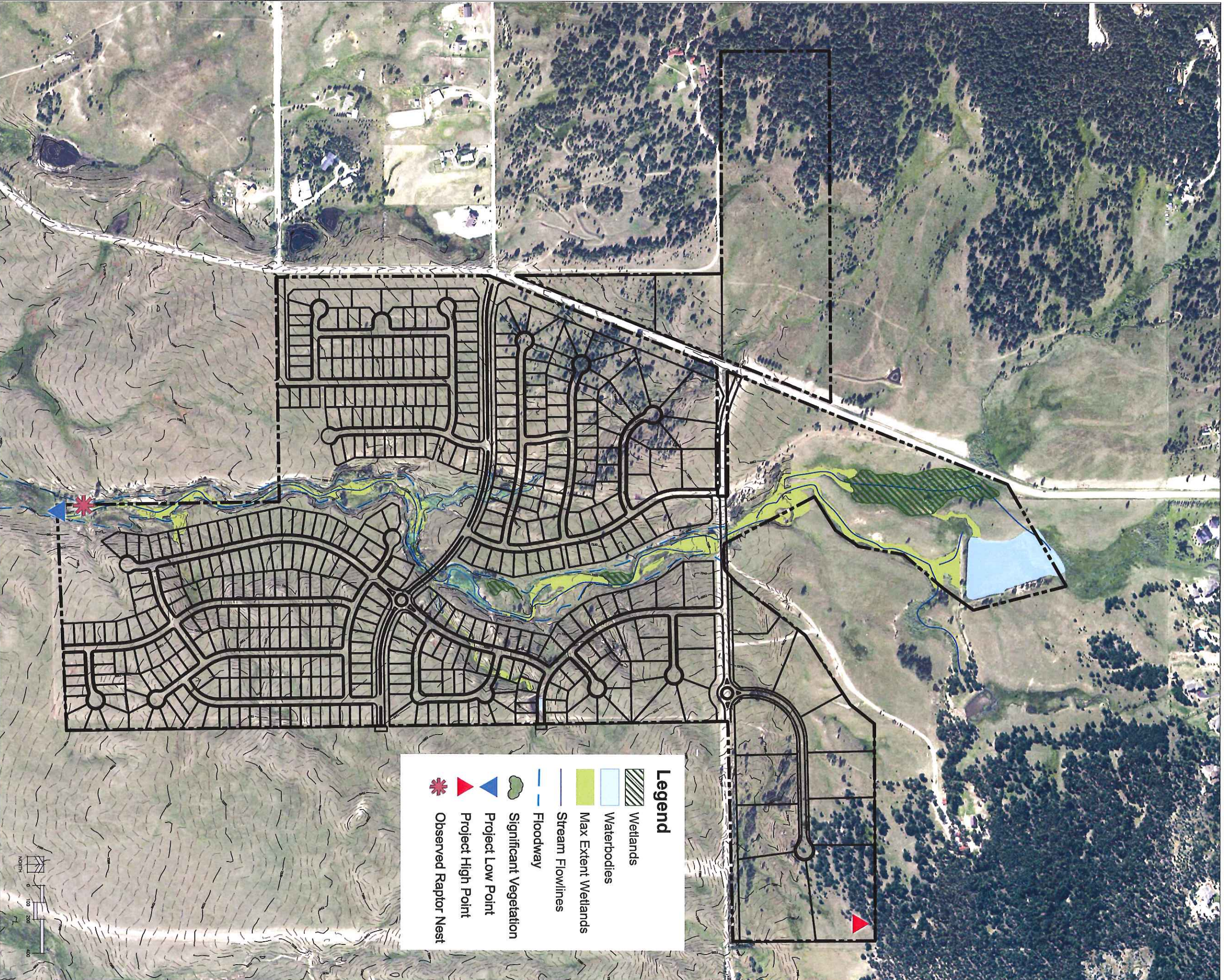












**Legend**

- Wetlands
- Waterbodies
- Max Extent Wetlands
- Stream Flowlines
- Floodway
- Significant Vegetation
- Project Low Point
- Project High Point
- Observed Raptor Nest



PLANNER / LANDSCAPE ARCHITECT

**NES**  
Land Planning  
Landscape  
Architecture  
Urban Design

N.E.S., Inc.  
619 N. Cascade Avenue, Suite 200  
Colorado Springs, CO 80903  
Tel. 719-471-0073  
Fax 719-471-0267  
www.nesarchitectural.com  
© 2012. All Rights Reserved.

PROJECT INFO

**Retreat at TimberRidge**  
PUD Development Plan

VOLLMER ROAD & ARROYA LAKE  
EL PASO COUNTY, CO 80908

DATE: 04-17-17

PROJECT MGR:  
PREPARED BY:

J. MANUARD  
K. MARSHALL

SHEET TITLE

**Land Suitability Analysis**  
**NATURAL FEATURES**  
**ANALYSIS**

ISSUE / REVISION

| DATE     | BY  | DESCRIPTION              |
|----------|-----|--------------------------|
| 04-17-17 | KMM | PERMITS & SURVEY UPDATES |
|          |     |                          |
|          |     |                          |
|          |     |                          |
|          |     |                          |

SHEET NUMBER

**Figure 02**

4 of 6