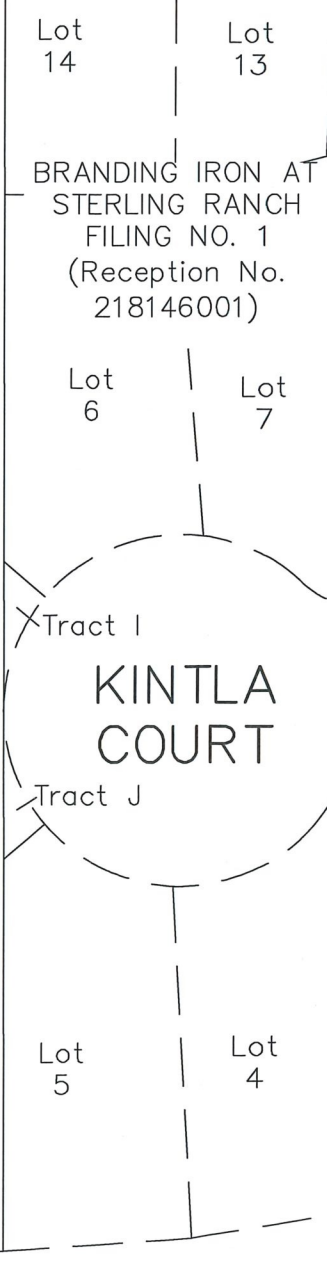
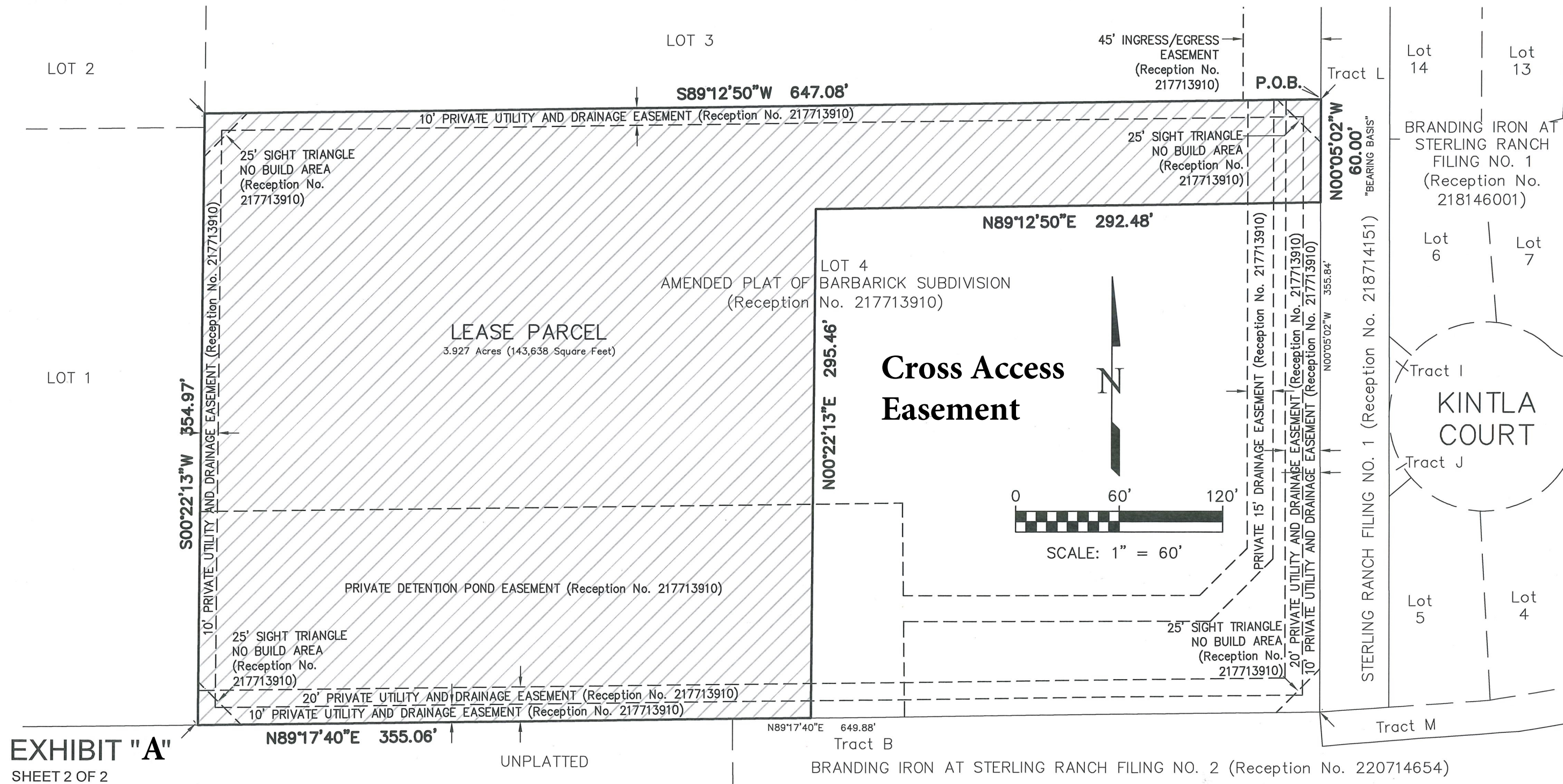


# LEGAL DESCRIPTION EXHIBIT

A PORTION OF THE SOUTHWEST QUARTER OF SECTION 33, TOWNSHIP 12 SOUTH, RANGE 65 WEST OF THE 6TH P.M., IN EL PASO COUNTY, COLORADO



REVISIONS			
NO.	DESCRIPTION	DATE	BY

NOTE: This EXHIBIT does not represent a monumented land survey, and is only intended to depict the attached LEGAL DESCRIPTION.

PROJECT NO.	21049	DRAWN BY: BRH	DATE: 12/23/21
		CHECKED BY: DVH	SHEET 1 OF 1