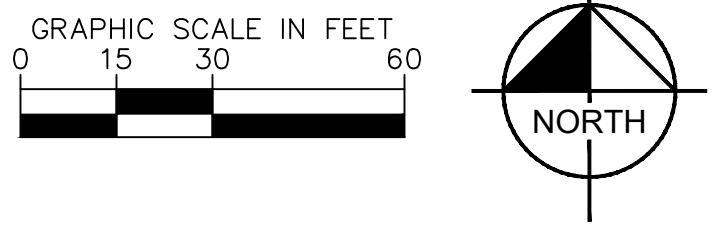


PLANT SCHEDULE

SYMBOL	CODE	QTY	BOTANICAL / COMMON NAME	CONT. SIZE	SIZE/CAL.	WIDTH	HEIGHT
EVERGREEN TREES							
PP	35		PINUS PONDEROSA / PONDEROSA PINE	B & B	6' HGT.	30-40'	60"
EXISTING TREES TO REMAIN							
EX	22		EXISTING TREE TO REMAIN				
GROUND COVERS							
SEED	50,413	SF	EXISTING NATIVE SEED TO REMAIN / EPC LOW GROW MIX	SEED	PER CHART		PANNEE BUTTES SEED

NOTE: THIRTY-FOUR (34) OF THE ORIGINALLY PLANTED TREES HAVE DIED AND SHALL BE REPLACED WITH PONDEROSA PINES PER THE LANDSCAPE PLAN ABOVE.
NOTE: SEE DETAILS SHEET (L7.2) FOR CODE CHARTS



LEGEND

- — — — — PROPERTY LINE
- - - - - LEASED PARCEL BOUNDARY
- - - - - EXISTING UTILITY & DRAINAGE EASEMENT
- — — — — PROPOSED TRUCK TURN MOVEMENT
- x - x - EXISTING FENCE
- - - - - EXISTING STORM SEWER
- - - - - EXISTING GAS MAIN
- * ○ * ○ * EXISTING VEGETATION
- ⊕ EXISTING TRANSFORMER
- ▭ ▭ ▭ ▭ ▭ ▭ PROPOSED ASPHALT
- ▭ ▭ ▭ ▭ ▭ ▭ PROPOSED CONCRETE

Kimley»Horn
2024 KIMLEY-HORN AND ASSOCIATES, INC.
2 North Nevada Avenue, Suite 900
Colorado Springs, Colorado 80903 (719) 453-0180

DESIGNED BY: EJJ
DRAWN BY: RES
CHECKED BY: EJJ
DATE: 3/7/2024

BARBARICK WASTE TRANSFER STATION
EL PASO COUNTY, COLORADO
CONSTRUCTION DOCUMENTS
LANDSCAPE PLAN

PRELIMINARY
FOR REVIEW ONLY
NOT FOR
CONSTRUCTION
Kimley»Horn
Kimley-Horn and Associates, Inc.

PROJECT NO.
196489000
SHEET
L7.0

811 Know what's below.
Call before you dig.

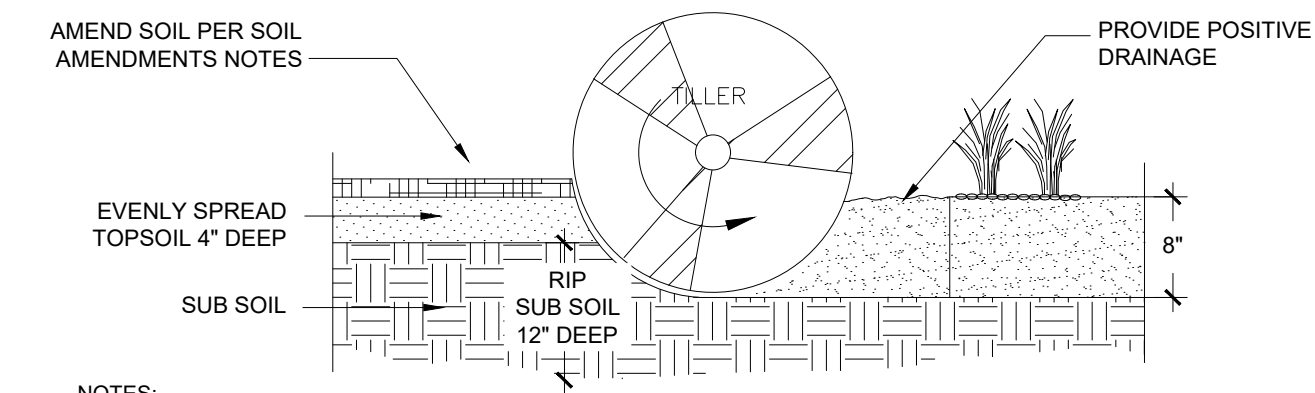
CALL UTILITY NOTIFICATION
CENTER OF COLORADO
1-800-922-1987
CALL 2-BUSINESS DAYS IN ADVANCE
BEFORE YOU DIG, GRADE, OR EXCAVATE
FOR THE MARKING OF UNDERGROUND
NEEDED UTILITIES

K:\COS_Civil\196489000_Borbarick_Waste_Transfer\CADD\PlanSheets\CDS\DP_LA.dwg Schnellbach, Ryan 3/8/2024 1:33 PM

LANDSCAPE SETBACKS AND BUFFERS					
STREET NAME OR BOUNDARY:	NORTH BNDY	SOUTH BNDY	SOUTH BUFFER	EAST BUFFER	WEST BNDY
ZONE DISTRICT BOUNDARY:	NO	NO	YES	YES	NO
STREET CLASSIFICATION:	N/A	N/A	N/A	N/A	N/A
SETBACK DEPTH REQUIRED / PROVIDED:	0 / 0	0 / 0	25' / 25'	15' / 15'	0 / 0
LINEAR FOOTAGE:	647'	310'	340'	356'	355'
TREE PER FEET REQ.:	N/A	N/A	1 TREE PER 25 LF	1 TREE PER 25 LF	N/A
NUMBER OF TREES REQ. / PROV.:	N/A	N/A	14 / 14	15 / 15	N/A
EVERGREEN TREES REQ. / PROV.:	N/A	N/A	5 / 14	5 / 15	N/A
SHRUB SUBSTITUTES REQ. / PROV.:	N/A	N/A	N/A	N/A	N/A
ORN. GRASS SUBSTITUTES REQ. / PROV.:	N/A	N/A	N/A	N/A	N/A
OPAQUE SCREEN REQ. / PROV.:	N/A	N/A	340' / 340'	N/A	N/A
PLANT ABBREVIATION DENOTED ON PLAN:	N/A	N/A	SB	EB	N/A
% GROUND PLANE VEG. REQ. / PROV.:	N/A	N/A	75% / 100%	75% / 75%	N/A

INTERNAL LANDSCAPING	
GROSS SITE AREA:	230,422 SF (5.29 AC)
PERCENT MINIMUM INTERNAL AREA:	5%
INTERNAL LANDSCAPE AREA REQ. / PROV.:	11,521 SF / 50,413 SF
TREE PER FEET REQ.:	1 TREE PER 500 SF
INTERNAL TREES REQ. / PROV.:	23 / 28
SHRUB SUBSTITUTES REQ. / PROV.:	N/A
ORN. GRASS SUBSTITUTES REQ. / PROV.:	N/A
PLANT ABBREVIATION DENOTED ON PLAN:	N/A
% GROUND PLANE VEG. REQ. / PROV.:	75% / 100%

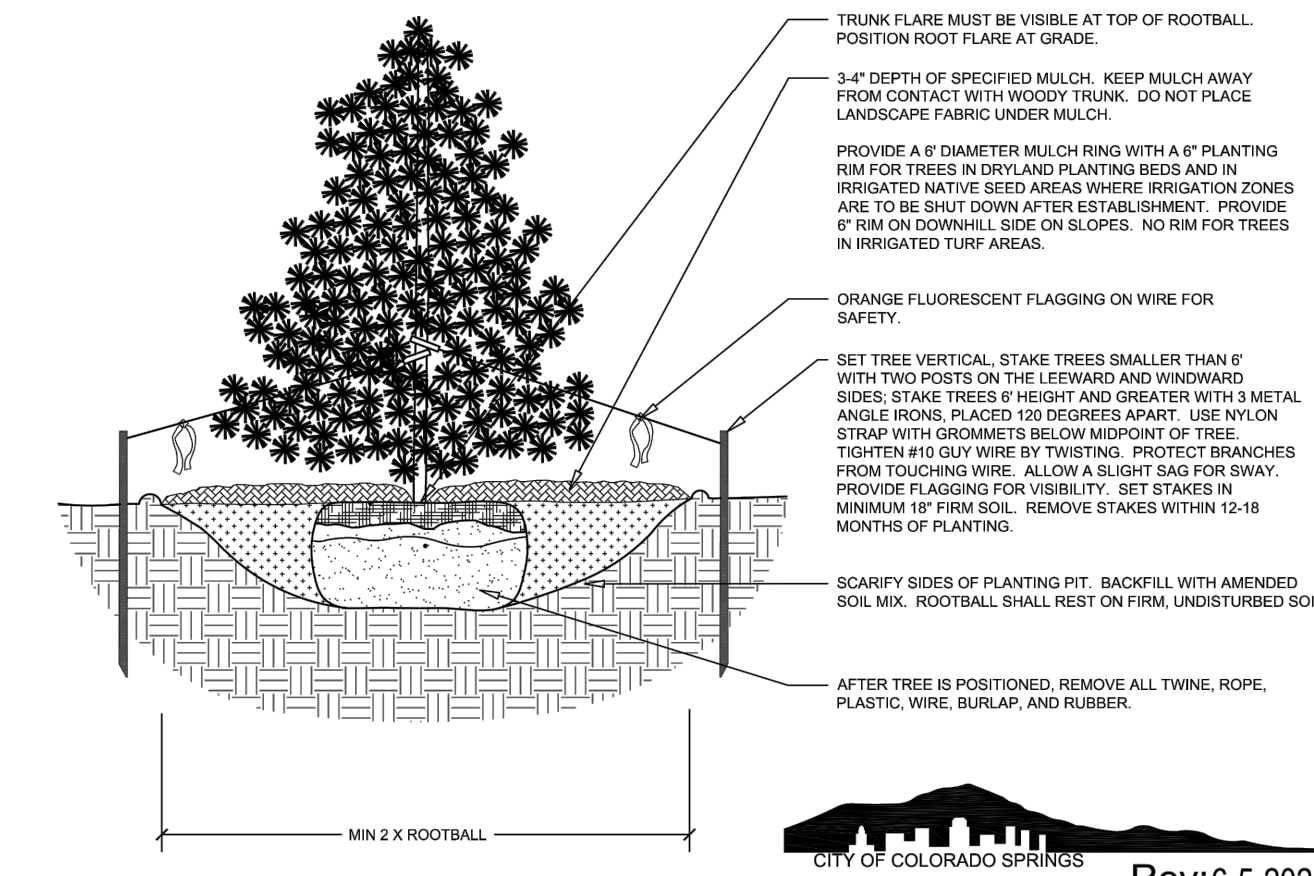
Please title as alternative landscape plan and explain in the LOI the justification for why you cant meet landscape code



- NOTES:
1. TOPSOIL TO CONSIST OF DARK, LIGHT LOAM SOIL FREE OF ROCKS, ROOTS, AND FOREIGN MATERIALS.
 2. THE FERTILIZER APPLICATION SHOULD BE DELAYED IF PLANTING DOES NOT OCCUR WITHIN 2-3 DAYS OF FERTILIZING.
 3. COMPOST TO CONSIST OF 1 YEAR OLD ORGANIC MATERIAL AND SHOULD NOT INCLUDE CHICKEN MANURE.
 4. FROZEN MATERIALS OR MATERIALS GREATER THAN 1" DIA. SHOULD BE REMOVED.
 5. REFER TO SPECS FOR COMPLETE SOIL PREPARATION REQUIREMENTS.
 6. THE ROTO-TILLED PERIMETER SHOULD EXTEND TO A DISTANCE OF 1 FOOT BEYOND THE DIAMETER OF A SINGLE ROOT BALL.

1 SOIL PREP
NTS 196-489-000-01

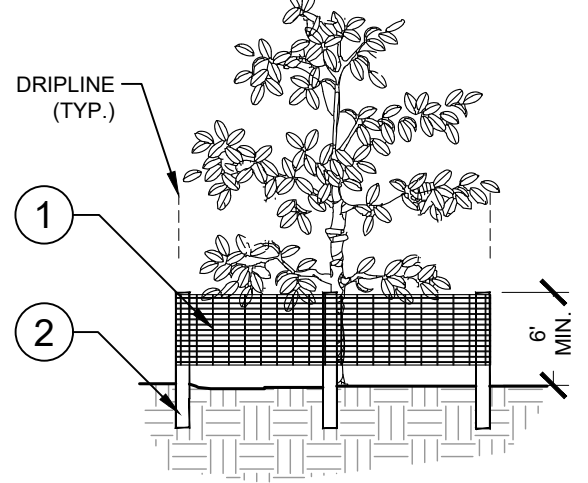
- NOTES:
1. DO NOT REMOVE OR CUT LEADER.
 2. PRUNE ONLY DEAD OR BROKEN BRANCHES IMMEDIATELY PRIOR TO PLANTING.
 3. DO NOT REMOVE ANY DOUBLE LEADER, UNLESS OTHERWISE DIRECTED BY OWNERS REPRESENTATIVE.
 4. KEEP PLANTS MOIST AND SHADED UNTIL PLANTING.
 5. AMENDED BACKFILL SHALL BE 1/3 COMPOST (PREFERABLY CLASSIFIED) AND 2/3 NATIVE AND/OR IMPORTED TOPSOIL.
 6. MARK THE NORTH SIDE OF TREE IN THE NURSERY, AND ROTATE TREE TO FACE NORTH AT THE SITE, WHENEVER POSSIBLE.
 7. PINE AND SPRUCE TREES TO BE SPRAYED FOR IPS BARK BEETLE PRIOR TO PLANTING. COORDINATE WITH CITY FORESTRY FOR CURRENT INSECT AND DISEASE RECOMMENDATIONS PRIOR TO PLANTING.
 8. ALL TREES TO BE DEEP WATERED AT TIME OF PLANTING.
 9. ALL TREES LOCATED IN ROCK/COBBLE BEDS SHALL HAVE A 36 INCH DIAMETER WOOD MULCH RING.



2 EVERGREEN TREE PLANTING
NTS 196-489-000-12

Table B. El Paso County All-Purpose Low Grow Mix for Upland and Transition Areas

Common Name	Scientific Name	Growth Season/Form	% of Mix	Pounds PLS		
				Irrigated broadcast Irrigated hydroseeded (80 seeds/sq ft)	non-irrigated broadcast non-irrigated hydroseeded irrigated drilled (40 seeds/sq ft)	non-irrigated drilled (20 seeds/sq ft)
Buffalograss	<i>Buchloe dactyloides</i>	Warm, sod	25	9.6	4.8	2.4
Blue Grama	<i>Bouteloua gracilis</i>	Warm, bunch	20	10.8	5.4	2.7
Sideoats Grama	<i>Bouteloua curtipendula</i>	Warm, bunch	29	5.6	2.8	1.4
Green Needlegrass	<i>Nassella viridula</i>	Cool, bunch	5	3.2	1.6	0.8
Western Wheatgrass	<i>Pascopyrum smithii</i>	Cool, sod	20	12.0	6.0	3.0
Sand Dropseed	<i>Sporobolus cryptandrus</i>	Warm, bunch	1	0.8	0.4	0.2
Seed rate (lbs PLS/acre)				42.0	21.0	10.3

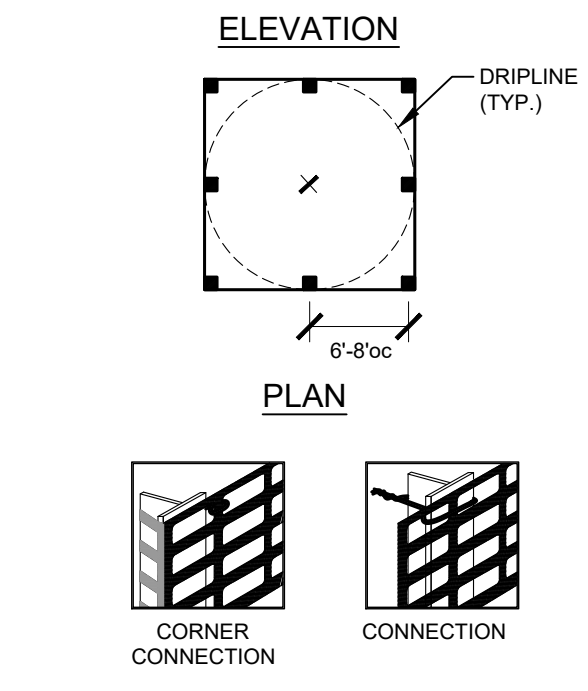


1. 6" PERIMETER PLUS" CONSTRUCTION FENCE BY CONWED PLASTICS OR OWNER'S REPRESENTATIVE APPROVED EQUAL. SUBMIT PRODUCT INFORMATION FOR APPROVAL PRIOR TO INSTALLATION.
2. 8" TALL METAL "T" POSTS OR 2" X 2" X 8" PRESSURE TREATED WOOD POSTS WITH 24" BURIAL BELOW GRADE.

INSTALLATION NOTES:

- A. POST SELECTION SHOULD BE BASED ON EXPECTED STRENGTH NEEDS AND THE LENGTH OF TIME FENCE WILL BE IN PLACE. FLEXIBLE FIBERGLASS ROD POSTS ARE RECOMMENDED FOR PARKS, ATHLETIC EVENTS AND CROWD CONTROL INSTALLATIONS. METAL "T" POSTS OR TREATED WOOD POSTS ARE TYPICALLY USED FOR CONSTRUCTION AND OTHER APPLICATIONS.
- B. POSTS SHOULD BE DRIVEN INTO THE GROUND TO A DEPTH OF 1/3 OF THE HEIGHT OF THE POST. FOR EXAMPLE, A 6" POST SHOULD BE SET AT LEAST 2" INTO THE GROUND.
- C. SPACE POSTS EVERY 6" (MIN.) TO 8" (MAX.).
- D. SECURE FENCING TO POST WITH NYLON CABLE TIES (AVAILABLE FROM CONWED PLASTICS). WOOD STRIPS MAY BE ALSO BE USED TO PROVIDE ADDITIONAL SUPPORT AND PROTECTION BETWEEN TIES AND POSTS.

NOTE: IF WIRE TIES ARE USED, AVOID DIRECT CONTACT WITH FENCE. WIRE MAY DAMAGE FENCE OVER TIME.



3 TREE PROTECTION FENCING
ELEVATION / PLAN NTS

Kimley»Horn
2024, KIMLEY-HORN AND ASSOCIATES, INC.
2 North Inland Avenue, Suite 900
Colorado Springs, Colorado 80903 (719) 453-0180

DESIGNED BY: EJJ
DRAWN BY: RES
CHECKED BY: EJJ
DATE: 3/7/2024

BARBARICK WASTE TRANSFER STATION
EL PASO COUNTY, COLORADO
CONSTRUCTION DOCUMENTS
LANDSCAPE DETAILS

PRELIMINARY
FOR REVIEW ONLY
NOT FOR
CONSTRUCTION
Kimley»Horn
Kimley-Horn and Associates, Inc.

PROJECT NO.
196489000
SHEET
L7.2

811 Know what's below.
Call before you dig.

CALL UTILITY NOTIFICATION
CENTER OF COLORADO
1-800-922-1987
CALL 2-BUSINESS DAYS IN ADVANCE
BEFORE YOU DIG, GRADE, OR EXCAVATE
FOR THE MARKING OF UNDERGROUND
NEEDED UTILITIES

PCD FILE NO. COM2346