


ALL DRAWINGS AND SPECIFICATIONS ARE THE PROPERTY OF THE ENGINEER OF RECORD. THEY ARE ONLY TO BE USED FOR THIS PROJECT AND ARE NOT TO BE USED ON ANY OTHER PROJECT WITHOUT WRITTEN AGREEMENT AND APPROPRIATE COMPENSATION TO THE ENGINEER OF RECORD.

WDGE4 LED Architectural Wall Sconce



Specifications
 Depth (D1): 10"
 Depth (D2): 2"
 Height: 9"
 Width: 25"
 Weight: 20.5 lbs (without options)

Introduction
 The WDGE4 LED family is designed to meet specific every wall-mounted lighting need in a widely accepted shape that blends with any architecture. The clean rectangular design comes in four sizes with lumen packages ranging from 1,200 to 25,000 lumens, providing a true site-wide solution. Embedded with rugged AIR wireless controls, the WDGE4 family provides additional energy savings and code compliance. WDGE4 has been designed to deliver up to 25,000 lumens through a precision refractive lens with wide distribution, perfect for augmenting the lighting from pole mounted luminaires.

WDGE LED Family Overview

Luminaire	Standard DR, V.K.	Color, CRI	Series	P1	P2	P3	P4	P5	P6
WDGE1 LED	40W	—	—	1,200	2,000	—	—	—	—
WDGE2 LED	10W	18W	Standard rLight	1,200	2,000	3,000	4,500	6,000	—
WDGE3 LED	15W	18W	Standard rLight	7,000	8,500	10,000	12,000	—	—
WDGE4 LED	—	—	Standard rLight	12,000	16,000	18,000	20,000	22,000	25,000

Ordering Information EXAMPLE: WDGE4 LED P3 40K 70CRI R3 MVOLT SRM DDBXD

Series	Package	Color Temperature	CR	Beam Angle	Mounting	Shipping	Shipped separately
WDGE4 LED	P1 P2 P3	30K 40K 50K	70CRI 80CRI	R2 R1 R4 R7	Type 2 Type 1 Type 4 Forward Throw	MVOLT 347 480 KW	SRM Indoor Indoor Indoor

Options

Option	Function
PE1	PhotoCell, Motion Type
SD1	Day-lighting sensor with 2 zones and 2 light outputs
DMC	0-10V dimming sensor with 2 zones, 2 light outputs, and external control
ICE	Remote control empty for back box
SD1WAY	100' range switch
BAA	Buy America's Act Compliant
Standard Sensor/Controls	PE1 (0-10V) motion sensor for 8-15' mounting heights, intended for use as a switchable circuit with external DDA to down switching.
PE1	PhotoCell, Motion Type
SD1	Day-lighting sensor with 2 zones and 2 light outputs
DMC	0-10V dimming sensor with 2 zones, 2 light outputs, and external control
ICE	Remote control empty for back box
SD1WAY	100' range switch
BAA	Buy America's Act Compliant
Standard Sensor/Controls	PE1 (0-10V) motion sensor for 8-15' mounting heights, intended for use as a switchable circuit with external DDA to down switching.
PE1	PhotoCell, Motion Type
SD1	Day-lighting sensor with 2 zones and 2 light outputs
DMC	0-10V dimming sensor with 2 zones, 2 light outputs, and external control
ICE	Remote control empty for back box
SD1WAY	100' range switch
BAA	Buy America's Act Compliant

Accessories

Accessories	Function
WDGE4-0000	100' cable-retractable ball beam (specify field)
WDGE4-0000U	WDGE4 surface-mounted ball beam (specify field)

NOTES

- 347V and 480V not available with DS.
- PE1 not available in 480V and with sensor/controls.
- DS and DMC not available with sensor/controls.
- Not qualified for DCC, not available with emergency battery backup.

LITHONIA LIGHTING COMMERCIAL OUTDOOR
 One Lithonia Way • Conyers, Georgia 30012 • Phone: 1-800-705-SERV (7378) • www.lithonia.com
 ©2019 LITHONIA LIGHTING, INC. All rights reserved. WDG04 LED Rev. 02/19/20

Symbol	Label	Image	Quantity	Manufacturer	Catalog Number	Description	Number	Lumens	Light Loss Factor	Wallspan	Foot
⊕	A	[Image]	2	Lithonia Lighting	WDGE4 LED P3 40K 70CRI R3 MVOLT SRM DDBXD	WDGE4 LED WITH P1 - PERFORMANCE PACKAGED, 40K, 70CRI, TYPICAL, 15.5 FT. x 25 FT.	2	11800	0.9	76.21	
⊕	B	[Image]	1	Lithonia Lighting	WDGE4 LED P3 40K 70CRI R3 MVOLT SRM DDBXD	WDGE4 LED WITH P1 - PERFORMANCE PACKAGED, 40K, 70CRI, TYPICAL, 15.5 FT. x 25 FT.	1	1227	0.9	10.002	Per: EDC04
⊕	B	[Image]	1	Lithonia Lighting	WDGE4 LED P3 40K 70CRI R3 MVOLT SRM DDBXD	WDGE4 LED WITH P1 - PERFORMANCE PACKAGED, 40K, 70CRI, TYPICAL, 15.5 FT. x 25 FT.	1	3400	0.9	32.1375	Per: EDC04

Statistics

Description	Symbol	Avg	Min	Max/Min	Avg/Min	Max
Attendant Shelter	+	0.1 fc	0.0 fc	N/A	N/A	5.0 fc
Property Line +20 Feet	+	0.0 fc	0.0 fc	N/A	N/A	0.1 fc

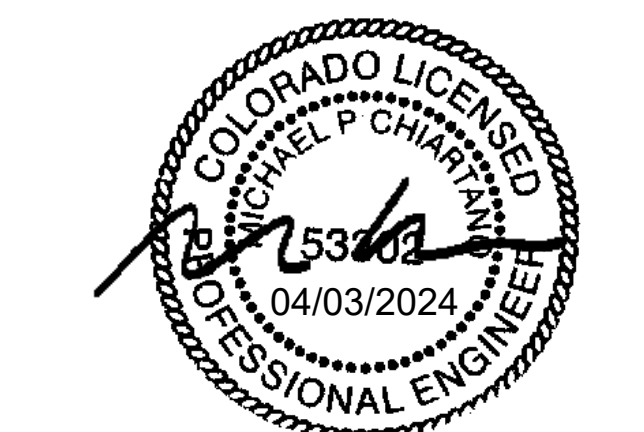
GENERAL NOTES

- DRAWINGS ARE BASED ON RECORD DRAWINGS (NOT GUARANTEED TO BE CURRENT AT TIME OF CONSTRUCTION) AND FIELD INVESTIGATION WITH DEMOLITION. EXAMINE PLANS AND VISIT THE SITE TO FIELD VERIFY ACTUAL CONDITIONS AND COORDINATE SAME WITH OTHER TRADES PRIOR TO STARTING WORK.
- A LICENSED AND BONDED CONTRACTOR SHALL BE USED FOR INSTALLATION. ALL LOCAL CODES SHALL BE FOLLOWED DURING INSTALLATION.
- ALL LIGHTING FIXTURES SHALL BE FULL CUT-OFF OR HAVE SHIELDING TO REDUCE OFF-SITE LIGHTING IMPACTS ONTO ADJACENT PROPERTIES AND ROADWAYS. ALL EXTERIOR LIGHTING SHALL BE ARRANGED TO MITIGATE LIGHT DIRECTED AWAY FROM ADJACENT PROPERTIES AND ANY PUBLIC RIGHT-OF-WAY. AN AMENDMENT TO THIS PLAN MAY BE REQUIRED IF THE LIGHTING TYPE IS CHANGED.

KEYNOTES

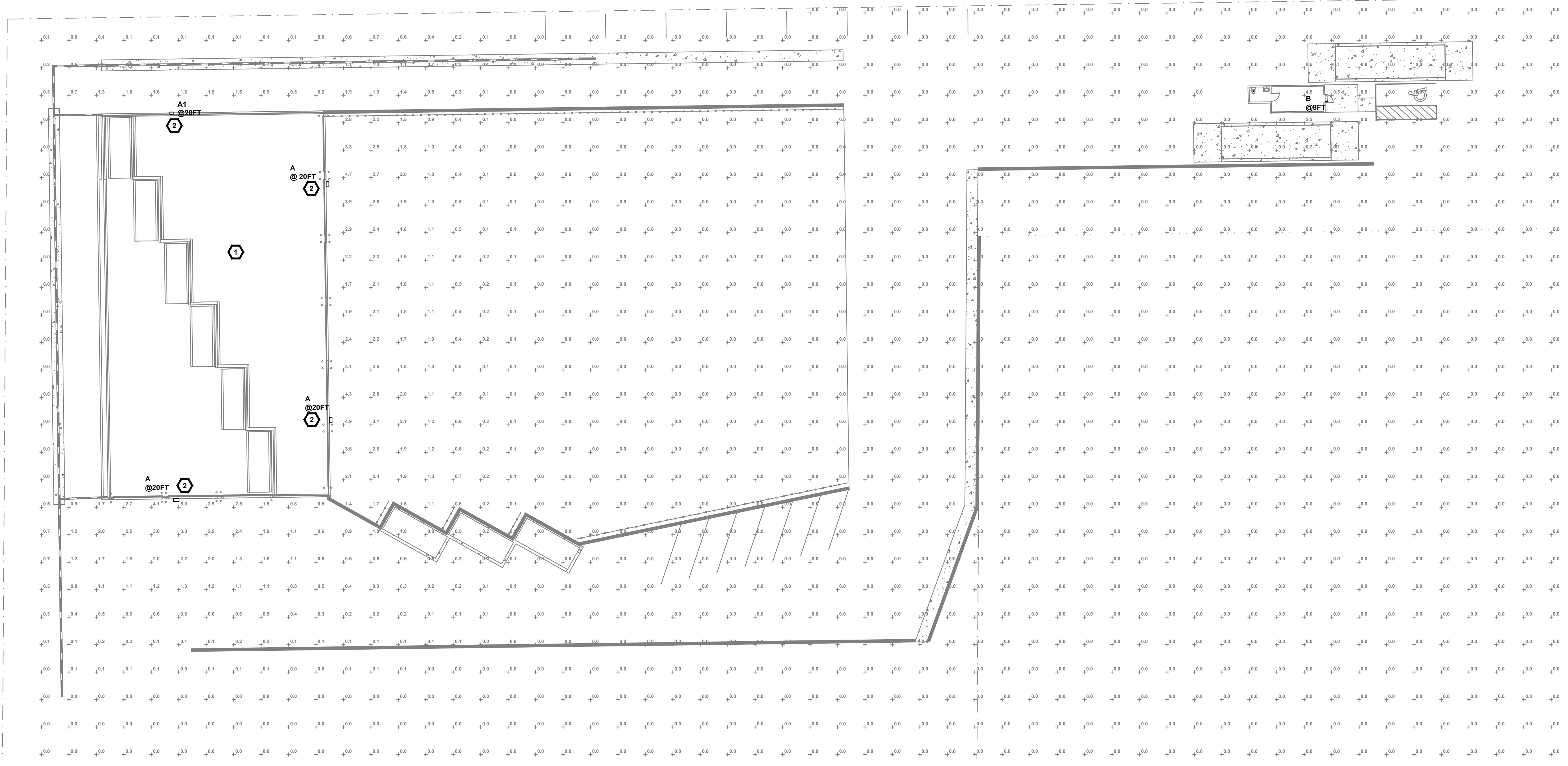
- LIGHTING FOR THE WALKWAYS WILL BE PROVIDED BY WALL-MOUNTED DOWN CASTING FIXTURES LOCATED ON PROPOSED BUILDING. FINAL LOCATION TO BE DETERMINED DURING BUILDING DESIGN.
- EXTERIOR LIGHTING, EXCEPT SECURITY LIGHTING, WILL BE CONTROLLED BY A TIME CLOCK TO BE TURNED OFF DURING NON-OPERATING HOURS.

ENGINEER SEAL:



10186 MT. LINCOLN DR. PEYTON, CO 80831
 INFO@CHIATTANOEG.COM
 719.257.2091

BARBARICK WASTE TRANSFER STATION
8812 CLIFF ALLEN PT.
COLORADO SPRINGS, CO



SITE PHOTOMETRIC PLAN
 SCALE: 1"=20'-0"

NO.	REVISION	DATE
	ISSUED FOR DP PLAN	10/23/2023

PROJECT NO: 23-0499
 DRAWN BY: MPC
 CHECKED BY:
 DATE: 10/23/2023

SHEET CONTENTS:

SITE PHOTOMETRIC PLAN

SHEET NUMBER:

FILE #: COM2346

E100