

NOTICE OF PUBLIC HEARING(S)

This notice provides options to access to the Planning Commission and Board of County Commissioners' hearings on the following Quasi-Judicial land use matter. **The item is scheduled for the Thursday, July 15, 2021 Planning Commission beginning at 1:00 p.m. and the Tuesday, August 10, 2021 Board of County Commissioners' hearing beginning at 9:00 a.m. located in the Centennial Hall Hearing Room located at 200 S. Cascade Avenue, Colorado Springs.**

P-20-009

GREEN

MAP AMENDMENT (REZONE) ROCK CREEK MESA

A request by Colorado Springs Equities, LLC, Golden Eagle Ranch LLC, and New Direction IRA INC, for approval of a map amendment (rezoning) of 37.26-acres from F-5 (Forest) to RS-5000 (Residential Suburban). The six (6) parcels included in the request are located west of the intersection of Colorado Highway 115 and Pawnee Road, approximately one-half (1/2) mile south of the City of Colorado Springs incorporated boundary and are within Sections 30 and 31, Township 15 South, Range 66 West of the 6th P.M. (Parcel Nos. 65303-00-017, 65303-00-022, 65304-00-009, 65304-01-001, 65312-00-007, 75000-00-236) (Commissioner District No. 3)

Type of Hearing: Quasi-Judicial

Planner: John Green (JohnGreen@elpasoco.com)

El Paso County is committed to full access and transparency while the community works through the COVID-19 crisis. That also means balancing public safety and keeping essential parts of County government open for business. Here are the ways you can participate in quasi-judicial land-use items coming up before the Planning Commission and the Board of County Commissioners:

Watch the Live Hearings Remotely

If you are interested in watching the Planning Commission or Board of County Commissioners' hearing live, please go to <https://www.elpasoco.com/news-information-channel/> or visit El Paso County's Facebook page at <https://www.facebook.com/ElPasoCountyCO/> at the scheduled time of the hearing. Staff will be monitoring the County's Facebook Live feed, so please feel free to ask questions or provide any comments you might have; however, any testimony you wish to provide must be done by following the "Participate Remotely" procedures listed below.

Participate Remotely

Due to COVID-19, we are recommending that you participate in the hearing remotely. If you would like to provide testimony on an item being heard by the Planning Commission or the Board of County Commissioners, please email Elena Krebs at ElenaKrebs@elpasoco.com with your name and the best phone number to be reached at and include any documents you would like provided to the hearing body as part of the official record. **NOTE: New exhibits are not permitted via email the day of hearing. All exhibits must be emailed to Ms. Krebs no later than one day prior to each of the above listed hearings.**

A list of individuals wishing to testify will be provided to the Chair in advance of the meeting. When it's time for public testimony on the item you'd like to testify on, you will receive a phone call at the number you provided and will be brought into the meeting remotely so you can address the hearing body.

Arrive in person (the address is 200 S. Cascade Ave, Colorado Springs, CO 80903)

- In-person attendance at Planning Commission and Board of County Commissioner hearings is permitted, but it is highly discouraged.
- Strict social/physical distancing must be maintained if you arrive to present or testify in person.
- You must be separated by at least two chairs and one row of seating in the auditorium.
- Please pay special attention to any communication you receive regarding the time your item will be heard

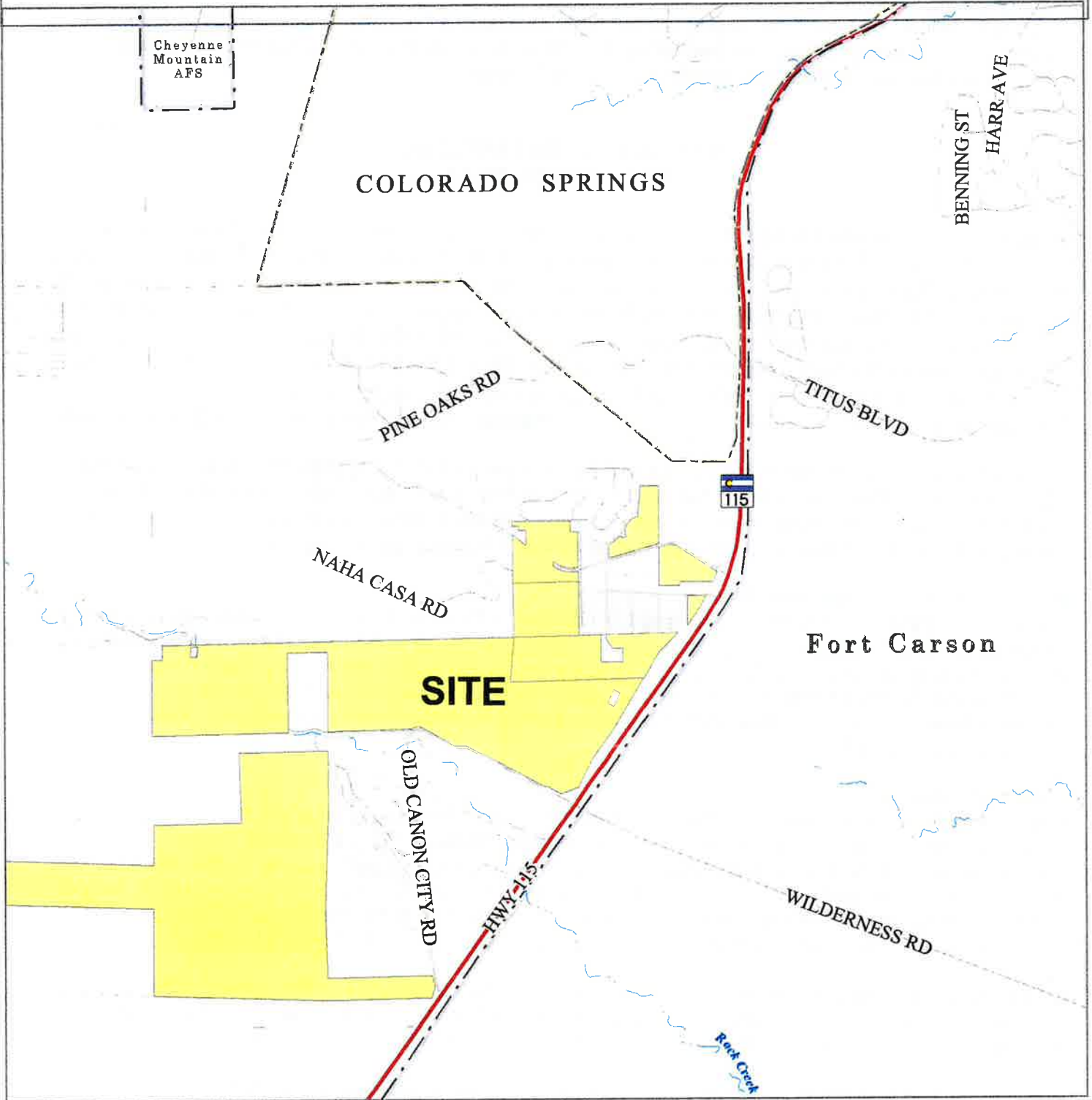
El Paso County Parcel Information

PARCEL	NAME
6530400009	NEW DIRECTION IRA INC FBO
6530401001	COLORADO SPRINGS EQUITIES LLC
6531200007	GOLDEN EAGLE RANCH LLC
6530300022	GOLDEN EAGLE RANCH LLC
6530300017	COLORADO SPRINGS EQUITIES LLC
7500000236	GOLDEN EAGLE RANCH LLC
7500000236	GOLDEN EAGLE RANCH LLC
7500000236	GOLDEN EAGLE RANCH LLC

File Name: P-20-009

Zone Map No. --

Date: June 28, 2021



Please report any parcel discrepancies to:
 El Paso County Assessor
 1675 W. Garden of the Gods Rd.
 Colorado Springs, CO 80907
 (719) 520-6600



COPYRIGHT 2018 by the Board of County Commissioners, El Paso County, Colorado. All rights reserved. No part of this document or data contained hereon may be reproduced; used to prepare derivative products; or distributed without the specific written approval of the Board of County Commissioners, El Paso County, Colorado. This document was prepared from the best data available at the time of printing. El Paso County, Colorado, makes no claim as to the completeness or accuracy of the data contained hereon.

