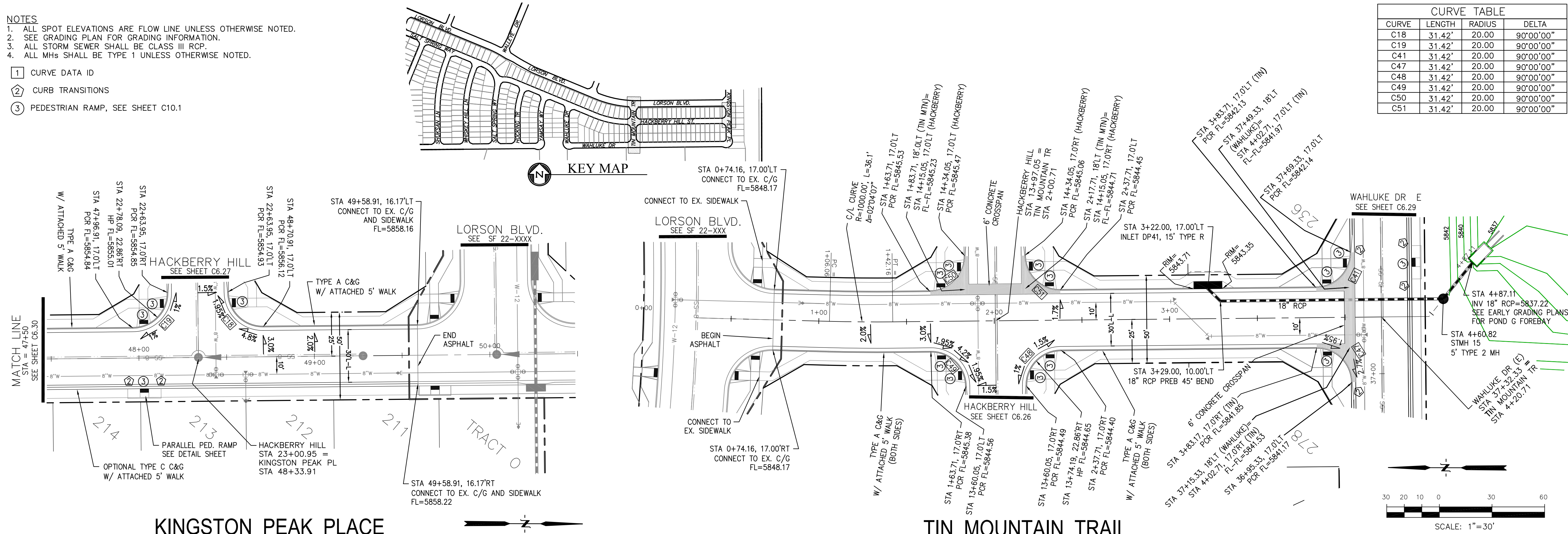


- NOTES
1. ALL SPOT ELEVATIONS ARE FLOW LINE UNLESS OTHERWISE NOTED.
 2. SEE GRADING PLAN FOR GRADING INFORMATION.
 3. ALL STORM SEWER SHALL BE CLASS III RCP.
 4. ALL MHS SHALL BE TYPE 1 UNLESS OTHERWISE NOTED.

- 1 CURVE DATA ID
- 2 CURB TRANSITIONS
- 3 PEDESTRIAN RAMP, SEE SHEET C10.1

CURVE TABLE			
CURVE	LENGTH	RADIUS	DELTA
C18	31.42'	20.00'	90°00'00"
C19	31.42'	20.00'	90°00'00"
C41	31.42'	20.00'	90°00'00"
C47	31.42'	20.00'	90°00'00"
C48	31.42'	20.00'	90°00'00"
C49	31.42'	20.00'	90°00'00"
C50	31.42'	20.00'	90°00'00"
C51	31.42'	20.00'	90°00'00"



CORE
ENGINEERING GROUP
 15004 1ST AVENUE S.
 BURNING WOODS, CO 80016
 PHONE: 303.759.5700
 CONTACT: RICHARD L. SCHINDLER, P.E.
 EMAIL: Rich@cegi.com

DATE: _____

DESCRIPTION: _____

NO. _____

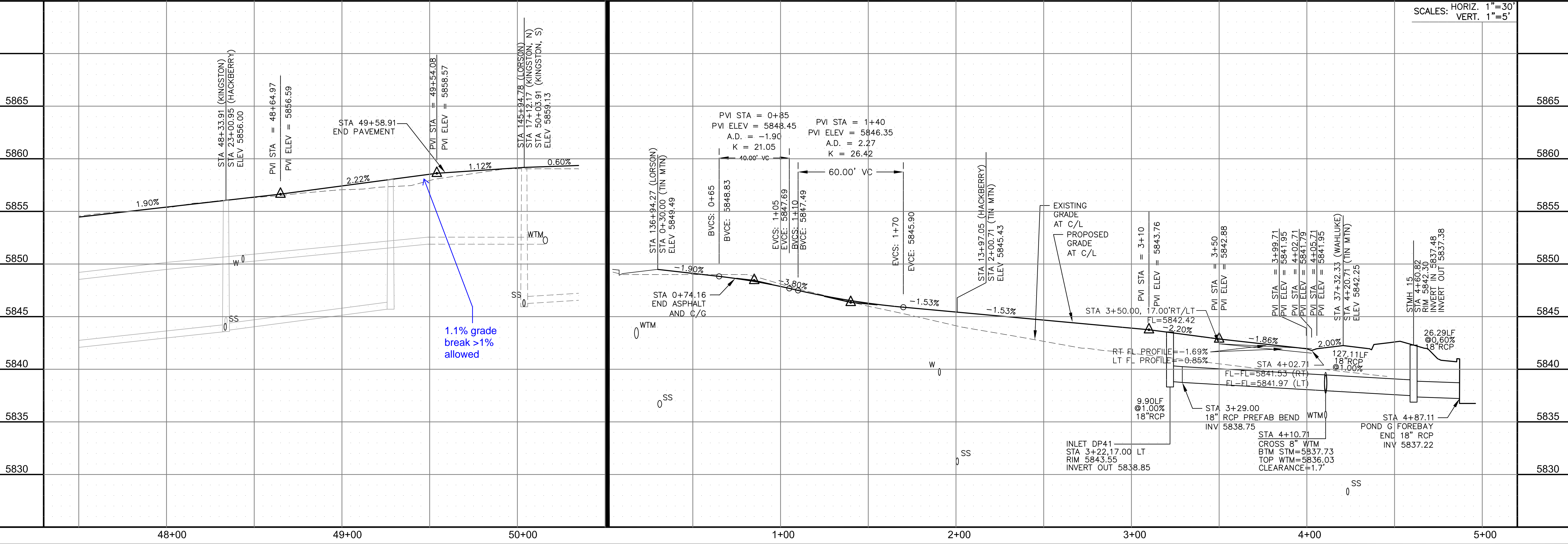
DRAWN: RLS
 DESIGNED: RLS
 CHECKED: RLS

PROJECT FOR:
LORSON, LLC
 212 N. WAHSATCH AVE, SUITE 301
 COLORADO SPRINGS, COLORADO 80903
 (719) 635-3200
 CONTACT: JEFF MARK

PROJECT:
HILLSIDE AT LORSON RANCH
 LORSON BLVD - WALLEYE DR
 COLORADO SPRINGS, COLORADO

KINGSTON PEAK PLACE

TIN MOUNTAIN TRAIL



STREET / STORM

KINGSTON PEAK PL & TIN MOUNTAIN TR
STA 47+50 TO 50+04 STA 0+30 TO 4+87

DATE: APRIL, 2022

PROJECT NO. 100.065

SHEET NUMBER C6.31

TOTAL SHEETS: 43