

PAINT BRUSH HILLS METROPOLITAN DISTRICT SCENIC VIEW AT PAINT BRUSH HILLS POND MODIFICATIONS

LOCATED WITHIN THE NORTHWEST QUARTER OF SECTION 25,
TOWNSHIP 12 SOUTH, RANGE 65 WEST OF THE SIXTH PRINCIPAL MERIDIAN,
COUNTY OF EL PASO, STATE OF COLORADO

ISSUED FOR APPROVAL
AUGUST 2022

CONTACTS

REVIEWING AGENCY

EL PASO COUNTY DEVELOPMENT SERVICES DEPARTMENT

2880 INTERNATIONAL CIRCLE
COLORADO SPRINGS, CO 80910
(719) 520-6300

OWNER

PAINT BRUSH HILLS METROPOLITAN DISTRICT
9985 TOWNER AVENUE
PEYTON, CO 80831
ROBERT GUEVARA, DISTRICT MANAGER
(719) 495-8188, FAX (719) 495-8008

ENGINEERING

RG AND ASSOCIATES, LLC
4885 WARD ROAD, SUITE 100
WHEAT RIDGE, CO 80033
(303) 293-8107, FAX (303) 293-8106
RICARDO GONCALVES, PE
(303) 468-8484
EMAIL: RICKG@RGENGINEERS.COM

EMERGENCY SERVICES

FIRE:
FALCON FIRE PROTECTION DISTRICT
7030 OLD MERIDIAN ROAD
FALCON, CO 80831
TRENT HARWIG, FIRE CHIEF
(719) 495-4050 FAX (719) 495-3112
WWW.FALCONFIREPD.ORG

UTILITIES

ELECTRIC:
MOUNTAIN VIEW ELECTRIC ASSOCIATION, INC.
111140 E. WOODMAN ROAD
FALCON, CO 80831
(719) 495-2283
WWW.MVEA.COOP

WATER & SEWER :
PAINT BRUSH HILLS METROPOLITAN DISTRICT
9985 TOWNER AVENUE
PEYTON, CO 80831
(719) 495-8188

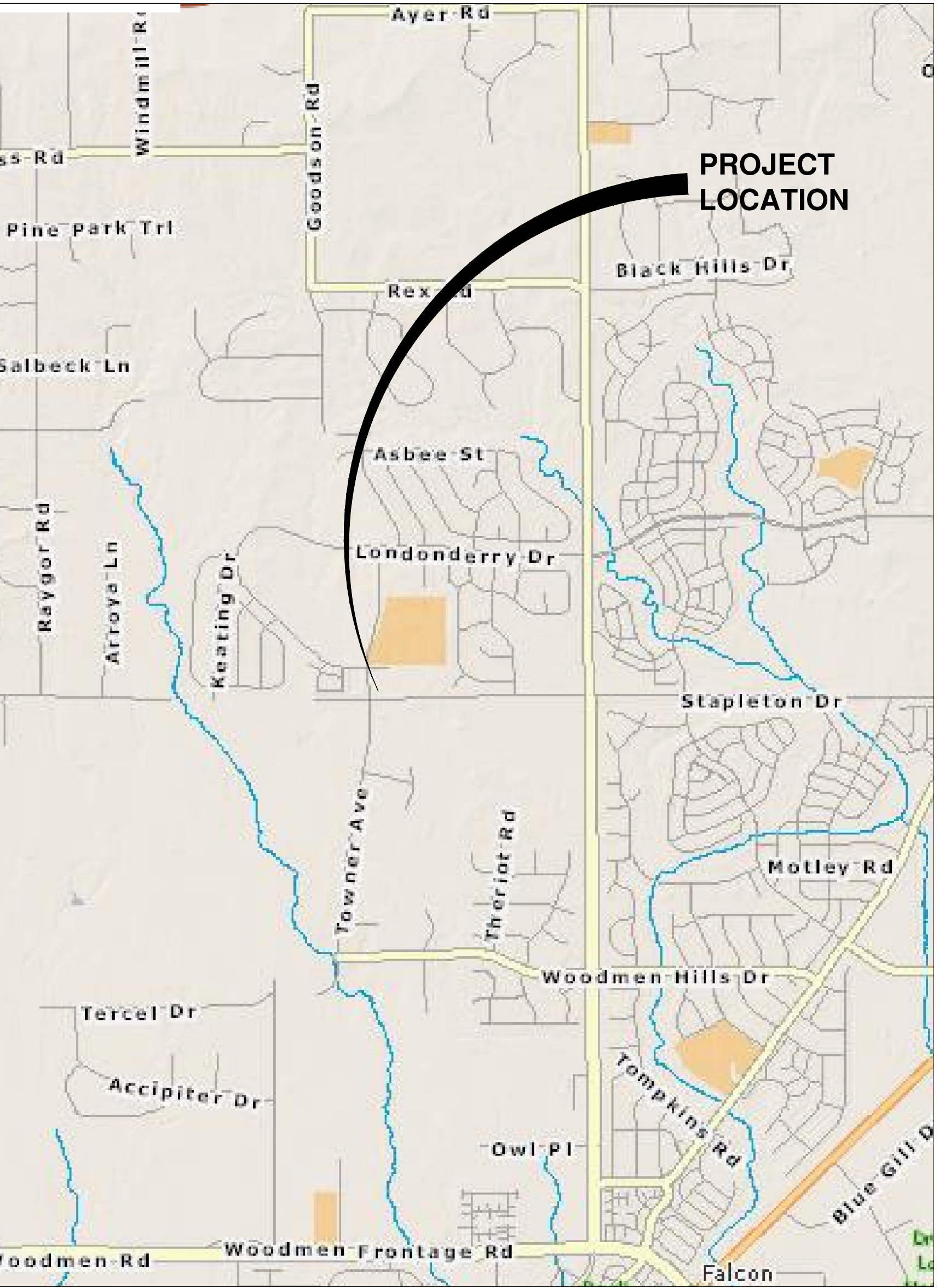
COMMUNICATIONS:
CENTURYLINK
3556 NEW CENTER POINT
COLORADO SPRINGS, CO 80922
(719) 591-0861

COMMUNICATIONS:
FALCON BROADBAND, INC.
555 HATHAWAY DRIVE
COLORADO SPRINGS, CO 80915
(719) 573-5343

GAS:
BLACK HILLS ENERGY
18965 BASE CAMP RD A-7
MONUMENT, CO 80132
(888) 890-5554
WWW.BLACKHILLSENERGY.COM

LEGEND

	EXISTING SANITARY SEWER EXISTING FORCEMAIN
	EXISTING SANITARY MANHOLE
	EXISTING SANITARY SERVICE
	EXISTING STORM PIPE
	EXISTING STORM MANHOLE
	EXISTING STORM INLET
	EXISTING CONCRETE
	EXISTING FLARED END SECTION
	EXISTING MINOR CONTOUR
	EXISTING MAJOR CONTOUR
	EXISTING WATER MAIN
	EXISTING WATER VALVE
	EXISTING RIGHT OF WAY
	EXISTING WATER SERVICE
	EXISTING FIRE HYDRANT
	EXISTING FIBER OPTIC
	EXISTING LIP OF GUTTER
	EXISTING FLOW LINE
	EXISTING BACK OF CURB
	EXISTING SIDEWALK
	EXISTING ROAD CENTERLINE
	EXISTING PROPERTY LINE
	EXISTING EDGE OF ASPHALT
	EXISTING EASEMENT
	EXISTING STORMWATER FLOW ARROWS
	PROPOSED RIP RAP
	PROPOSED MINOR CONTOUR
	PROPOSED MAJOR CONTOUR
	PROPOSED CONCRETE
	PROPOSED STORMWATER FLOW ARROWS
	PROPOSED LIMITS OF CONSTRUCTION
	PROPOSED SILT FENCE
	PROPOSED SEEDING & MULCHING
	PROPOSED EROSION CONTROL BLANKET
	PROPOSED SEDIMENT CONTROL LOG
	PROPOSED INLET PROTECTION



VICINITY MAP
1" = 2000 FEET

PREPARED FOR:



PREPARED BY:



SHEET INDEX

SHEET NO.	DESCRIPTION
1	COVER
2	GENERAL NOTES
3	SITE PLAN
4	OUTLET STRUCTURE DETAILS
5	DETAILS
6	EROSION CONTROL PLAN
7	EROSION CONTROL DETAILS
8	EROSION CONTROL DETAILS

DESIGN ENGINEER'S STATEMENT:

THESE DETAILED PLANS AND SPECIFICATIONS WERE PREPARED UNDER MY DIRECTION AND SUPERVISION. SAID PLANS AND SPECIFICATIONS HAVE BEEN PREPARED ACCORDING TO THE CRITERIA ESTABLISHED BY THE COUNTY FOR DETAILED ROADWAY, DRAINAGE, GRADING AND EROSION CONTROL PLANS AND SPECIFICATIONS, AND SAID PLANS AND SPECIFICATIONS ARE IN CONFORMITY WITH APPLICABLE MASTER DRAINAGE PLANS AND MASTER TRANSPORTATION PLANS. SAID PLANS AND SPECIFICATIONS MEET THE PURPOSES FOR WHICH THE PARTICULAR ROADWAY AND DRAINAGE FACILITIES ARE DESIGNED AND ARE CORRECT TO THE BEST OF MY KNOWLEDGE AND BELIEF. I ACCEPT RESPONSIBILITY FOR ANY LIABILITY CAUSED BY ANY NEGLIGENT ACTS, ERRORS OR OMISSIONS ON MY PART IN PREPARATION OF THESE DETAILED PLANS AND SPECIFICATIONS.

OWNER/DEVELOPER'S STATEMENT:

I, THE OWNER/DEVELOPER HAVE READ AND WILL COMPLY WITH THE REQUIREMENTS OF THE GRADING AND EROSION CONTROL PLAN AND ALL OF THE REQUIREMENTS SPECIFIED IN THESE DETAILED PLANS AND SPECIFICATIONS.

ROBERT GUEVARA, DISTRICT MANAGER
PAINT BRUSH HILLS METROPOLITAN DISTRICT
9985 TOWNER AVENUE
PEYTON, CO 80831

EL PASO COUNTY:

COUNTY PLAN REVIEW IS PROVIDED ONLY FOR GENERAL CONFORMANCE WITH COUNTY DESIGN CRITERIA. THE COUNTY IS NOT RESPONSIBLE FOR THE ACCURACY AND ADEQUACY OF THE DESIGN, DIMENSIONS, AND/OR ELEVATIONS WHICH SHALL BE CONFIRMED AT THE JOB SITE. THE COUNTY THROUGH THE APPROVAL OF THIS DOCUMENT ASSUMES NO RESPONSIBILITY FOR COMPLETENESS AND/OR ACCURACY OF THIS DOCUMENT. FILED IN ACCORDANCE WITH THE REQUIREMENTS OF THE EL PASO COUNTY LAND DEVELOPMENT CODE, DRAINAGE CRITERIA MANUAL VOLUMES 1 AND 2, AND ENGINEERING CRITERIA MANUAL, AS AMENDED. IN ACCORDANCE WITH EDCM SECTION 1.12, THESE CONSTRUCTION DOCUMENTS WILL BE VALID FOR CONSTRUCTION FOR A PERIOD OF 2 YEARS FROM THE DATE SIGNED BY THE EL PASO COUNTY ENGINEER. IF CONSTRUCTION HAS NOT STARTED WITHIN THOSE 2 YEARS, THE PLANS WILL NEED TO BE RESUBMITTED FOR APPROVAL, INCLUDING PAYMENT OF REVIEW FEES AT THE PLANNING AND COMMUNITY DEVELOPMENT DIRECTOR'S DISCRETION.

JOSHUA PALMER, P.E.
COUNTY ENGINEER

Approved

DATE
09/08/2022 4:13:11 PM



3. ALL CONSTRUCTION SHALL COMPLY WITH PAINT BRUSH HILLS METROPOLITAN DISTRICT SPECIFICATIONS.
4. THE CONTRACTOR SHALL CONTACT ALL APPROPRIATE UTILITY COMPANIES AND EL PASO COUNTY PRIOR TO THE BEGINNING OF ANY CONSTRUCTION. CONTRACTOR SHALL BE RESPONSIBLE FOR LOCATING ANY EXISTING UTILITY (INCLUDING DEPTHS) WHICH MAY CONFLICT WITH THE PROPOSED CONSTRUCTION. ALL EXISTING UTILITIES SHALL BE PROTECTED FROM DAMAGE BY THE CONTRACTOR. DAMAGED UTILITIES SHALL BE REPAIRED BY THE CONTRACTOR AT HIS OWN EXPENSE.
5. ALL ITEMS SHOWN ON THE PLANS AS EXISTING ARE SHOWN IN APPROXIMATE LOCATIONS ONLY. THE ACTUAL LOCATIONS MAY VARY FROM THE PLANS, ESPECIALLY IN THE CASE OF UNDERGROUND UTILITIES. WHENEVER THE CONTRACTOR DISCOVERS A DISCREPANCY IN LOCATIONS, HE SHALL CONTACT THE ENGINEER IMMEDIATELY.
6. THE DISTRICT ENGINEER AND OTHER APPROVING AGENCIES ARE TO BE NOTIFIED AT LEAST 48 HOURS PRIOR TO CONSTRUCTION.
7. THE CONTRACTOR SHALL OBTAIN, AT HIS EXPENSE, ALL PERMITS WHICH ARE NECESSARY TO PERFORM THE PROPOSED WORK.
8. ALL CONCRETE SHALL BE A MINIMUM OF CDOT CLASS B, 4,500 PSI POUND COMPRESSION STRENGTH AT 28 DAYS.
9. THE DESIGN ENGINEER SHALL SUBMIT ONE (1) SET OF ROLLED "AS-BUILT" PRINTS TO THE DISTRICT ENGINEER FOR APPROVAL PRIOR TO PRINTING AND ELECTRONIC FILES FOR THE DISTRICT. AFTER APPROVAL, HAS BEEN GRANTED BY THE DISTRICT ENGINEER, FULL SIZE MYLAR SEPA PRINTS SHALL BE TRANSMITTED TO THE PAINT BRUSH HILLS METROPOLITAN DISTRICT DISTRICT OFFICE AND AN ADDITIONAL SET OF ROLLED PRINTS SHALL BE TRANSMITTED TO THE DISTRICT ENGINEER'S OFFICE PRIOR TO PROBATIONARY ACCEPTANCE.
10. ALL BACKFILL MATERIAL SHALL BE COMPACTED TO 95% STANDARD PROCTOR DENSITY. COMPACTION TESTS MUST BE SUBMITTED TO DISTRICT ENGINEER PRIOR TO PROBATIONARY ACCEPTANCE. COMPACTION TESTS AND ASSOCIATED COSTS SHALL BE THE RESPONSIBILITY OF THE CONTRACTOR.
11. TRENCHES SHALL BE EXCAVATED AND THE PIPE EXPOSED FOR THE INSPECTION AT ANY LOCATION ON THE PROJECT IF SO ORDERED BY THE INSPECTOR.
12. NO WORK SHALL BE BACKFILLED UNTIL THE CONSTRUCTION HAS BEEN INSPECTED AND APPROVED FOR BACKFILLING BY THE DISTRICT ENGINEER OR REPRESENTATIVE OF THE DISTRICT ENGINEER.
13. THE CONTRACTOR SHALL HAVE IN HIS POSSESSION AT ALL TIMES ONE (1) SIGNED COPY OF THE PLANS AND SPECIFICATIONS WHICH HAVE BEEN APPROVED BY THE PAINT BRUSH HILLS METROPOLITAN DISTRICT AND THE DISTRICT ENGINEER.
14. THE CONTRACTOR SHALL NOTIFY THE PAINT BRUSH HILLS METROPOLITAN DISTRICT DISTRICT AND THE DISTRICT ENGINEER AT LEAST 48 HOURS PRIOR TO ANY CONSTRUCTION. IF WORK IS SUSPENDED FOR ANY PERIOD OF TIME AFTER INITIAL START-UP, THE CONTRACTOR MUST NOTIFY THE DISTRICT ENGINEER 48 HOURS PRIOR TO RE-START.
15. BATCH PLANTS SHALL NOT BE UTILIZED ON SITE.
16. THERE IS NO NOTICEABLE VEGETATION ON THE SITE. ONLY GRASSES AND WEEDS ARE PRESENT.
17. THERE ARE NO UTILITY EASEMENTS ON THE PLATTED SITE.

1. UPON COMPLETION OF ALL CONSTRUCTION AND TESTING, THE CONTRACTOR SHALL CONTACT THE DISTRICT FOR AN INITIAL WALK-THRU. A PUNCHLIST WILL BE PROVIDED TO THE CONTRACTOR UPON COMPLETION OF THE INITIAL WALK-THRU AND ONCE THE PUNCHLIST ITEMS HAVE BEEN COMPLETED, THE DISTRICT WILL ISSUE ACCEPTANCE AND ANY WARRANTY PERIODS WILL COMMENCE.

1. ALL DRAINAGE AND ROADWAY CONSTRUCTION SHALL MEET THE STANDARDS AND SPECIFICATIONS OF THE CITY OF COLORADO SPRINGS/EL PASO COUNTY DRAINAGE CRITERIA MANUAL, VOLUMES 1 AND 2, AND THE EL PASO COUNTY ENGINEERING CRITERIA MANUAL.
2. CONTRACTOR SHALL BE RESPONSIBLE FOR THE NOTIFICATION AND FIELD NOTIFICATION OF ALL EXISTING UTILITIES, WHETHER SHOWN ON THE PLANS OR NOT, BEFORE BEGINNING CONSTRUCTION. LOCATION OF EXISTING UTILITIES SHALL BE VERIFIED BY THE CONTRACTOR PRIOR TO CONSTRUCTION. CALL 811 TO CONTACT THE UTILITY NOTIFICATION CENTER OF COLORADO (UNCC).
3. CONTRACTOR SHALL KEEP A COPY OF THESE APPROVED PLANS, THE GRADING AND EROSION CONTROL PLAN, THE STORMWATER MANAGEMENT PLAN (SWMP), AND THE APPROPRIATE DESIGN AND CONSTRUCTION STANDARDS AND SPECIFICATIONS AT THE JOB SITE AT ALL TIMES, INCLUDING THE FOLLOWING:
 - a. EL PASO COUNTY ENGINEERING CRITERIA MANUAL (ECM)
 - b. CITY OF COLORADO SPRINGS/EL PASO COUNTY DRAINAGE CRITERIA MANUAL, VOLUMES 1 AND 2
 - c. CDOT M & S STANDARDS
4. NOTWITHSTANDING ANYTHING DEPICTED IN THESE PLANS IN WORDS OR GRAPHIC REPRESENTATION, ALL DESIGN AND CONSTRUCTION RELATED TO ROADS, STORM DRAINAGE AND EROSION CONTROL SHALL CONFORM TO THE STANDARDS AND REQUIREMENTS OF THE MOST RECENT VERSION OF THE RELEVANT ADOPTED EL PASO COUNTY STANDARDS, INCLUDING THE LAND DEVELOPMENT CODE, THE EROSION CONTROL CRITERIA MANUAL, THE DRAINAGE CRITERIA MANUAL, AND THE DRAINAGE CRITERIA MANUAL VOLUME 2. ANY DEVIATIONS FROM REGULATIONS AND STANDARDS MUST BE REQUESTED, AND APPROVED, IN WRITING. ANY MODIFICATIONS NECESSARY TO MEET CRITERIA AFTER-THE-FACT WILL BE ENTIRELY THE DEVELOPER'S RESPONSIBILITY TO RECTIFY.
5. IT IS THE DESIGN ENGINEER'S RESPONSIBILITY TO ACCURATELY SHOW EXISTING CONDITIONS, BOTH ONSITE AND OFFSITE, ON THE CONSTRUCTION PLANS. ANY MODIFICATIONS NECESSARY DUE TO CONFLICTS, OMISSIONS, OR CHANGED CONDITIONS WILL BE ENTIRELY THE DEVELOPER'S RESPONSIBILITY TO RECTIFY.
6. CONTRACTOR SHALL SCHEDULE A PRE-CONSTRUCTION MEETING WITH EL PASO COUNTY DEVELOPMENT SERVICES DEPARTMENT (DSD) - INSPECTIONS, PRIOR TO STARTING CONSTRUCTION.
7. IT IS THE CONTRACTOR'S RESPONSIBILITY TO UNDERSTAND THE REQUIREMENTS OF ALL JURISDICTIONAL AGENCIES AND TO OBTAIN ALL REQUIRED PERMITS, INCLUDING BUT NOT LIMITED TO EL PASO COUNTY EROSION AND STORM WATER QUALITY CONTROL PERMIT (ESQCP), REGIONAL BUILDING FLOODPLAIN DEVELOPMENT PERMIT, U.S. ARMY CORPS OF ENGINEERS-ISSUED 401 AND/OR 404 PERMITS, AND COUNTY AND STATE FUGITIVE DUST PERMITS.
8. CONTRACTOR SHALL NOT DEViate FROM THE PLANS WITHOUT FIRST OBTAINING WRITTEN APPROVAL FROM THE DESIGN ENGINEER AND DSD. CONTRACTOR SHALL NOTIFY THE DESIGN ENGINEER IMMEDIATELY UPON DISCOVERY OF ANY ERRORS OR INCONSISTENCIES.
9. ALL STORM DRAIN PIPE SHALL BE CLASS III RCP UNLESS OTHERWISE NOTED AND APPROVED BY DSD.
10. CONTRACTOR SHALL COORDINATE GEOTECHNICAL TESTING PER ECM STANDARDS. ALL CONSTRUCTION TRAFFIC MUST ENTER/EXIT THE SITE AT APPROVED CONSTRUCTION ACCESS POINTS.
11. THE LIMITS OF CONSTRUCTION SHALL REMAIN WITHIN THE PROPERTY LINE UNLESS OTHERWISE NOTED. THE OWNER/DEVELOPER SHALL OBTAIN WRITTEN PERMISSION AND EASEMENTS, WHERE REQUIRED, FROM ADJOINING PROPERTY OWNERS) PRIOR TO ANY OFF-SITE DISTURBANCE, GRADING, OR CONSTRUCTION.

1. COMPACTOR REQUIREMENTS SHALL BE 95% STANDARD PROCTOR AS DETERMINED BY ASTM D698. UNLESS OTHERWISE APPROVED BY THE PAINTBRUSH HILLS METRO DISTRICT OR A HIGHER STANDARD IS IMPOSED BY ANOTHER AGENCY HAVING RIGHT-OF-WAY JURISDICTION.
2. ALL MATERIALS AND WORKSMANSHIP SHALL BE SUBJECT TO INSPECTION BY THE PAINTBRUSH HILLS METRO DISTRICT. THE PAINTBRUSH HILLS METRO DISTRICT RESERVES THE RIGHT TO ACCEPT OR REJECT ANY SUCH MATERIALS AND WORKSMANSHIP THAT DOES NOT CONFORM TO ITS STANDARDS AND SPECIFICATIONS.
3. THE CONTRACTOR IS REQUIRED TO NOTIFY THE PAINTBRUSH HILLS METRO DISTRICT (495-8188) A MINIMUM OF 48 HOURS AND A MAXIMUM OF 96 HOURS PRIOR TO THE START OF CONSTRUCTION. THE CONTRACTOR SHALL ALSO NOTIFY AFFECTED UTILITY COMPANIES 48 HOURS PRIOR TO CONSTRUCTION ADJACENT TO THE KNOWN UTILITY LINES.
4. THE LOCATION OF ALL UTILITIES AS SHOWN ON THESE DRAWINGS ARE APPROXIMATE ONLY. THE LOCATION OF ALL UTILITIES SHALL BE VERIFIED PRIOR TO CONSTRUCTION BY THE CONTRACTOR.
5. THE CONTRACTOR SHALL FIELD EXCAVATE AND VERIFY THE VERTICAL AND HORIZONTAL LOCATION OF ALL TIE-INS. CONTRACTOR SHALL NOTIFY THE PAINTBRUSH HILLS METRO DISTRICT AND THE ENGINEER OF THE FIELD VERIFIED INFORMATION PRIOR TO CONSTRUCTION.
6. THE CONTRACTOR SHALL AT HIS EXPENSE SUPPORT AND PROTECT ALL UTILITY MAINS SO THAT THEY WILL FUNCTION CONTINUOUSLY DURING CONSTRUCTION. SHOULD A UTILITY MAIN FAIL AS A RESULT OF THE CONTRACTORS OPERATION, IT WILL BE REPLACED IMMEDIATELY BY EITHER THE CONTRACTOR OR THE PAINTBRUSH HILLS METRO DISTRICT AT FULL COST OF LABOR AND MATERIALS TO THE CONTRACTOR.
7. ANY PUMPING OR BYPASS OPERATIONS MUST BE REVIEWED AND APPROVED PRIOR TO EXECUTION BY BOTH THE PAINTBRUSH HILLS METRO DISTRICT AND THE ENGINEER.
8. CONTRACTOR MUST REPLACE OR REPAIR ANY DAMAGE TO ALL SURFACE IMPROVEMENTS, INCLUDING BUT NOT LIMITED TO FENCES, CURBS AND GUTTER, LANDSCAPING, AND/OR ASPHALT THAT MAY BE CAUSED DURING CONSTRUCTION.
9. PRIOR TO CONSTRUCTION, A PRE CONSTRUCTION CONFERENCE IS REQUIRED A MINIMUM OF 72 HOURS IN ADVANCE OF COMMENCEMENT OF WORK. TO SET THE PRE-CONSTRUCTION CONFERENCE, CONTACT LEON GOMES-SUPERINTENDENT (495-8188) OF THE PAINTBRUSH HILLS METRO DISTRICT FOR A TIME. NO PRE-CONSTRUCTION CONFERENCE TIMES WILL BE SET UNTIL 4 SETS OF SIGNED DRAWINGS ARE RECEIVED BY THE DISTRICT.

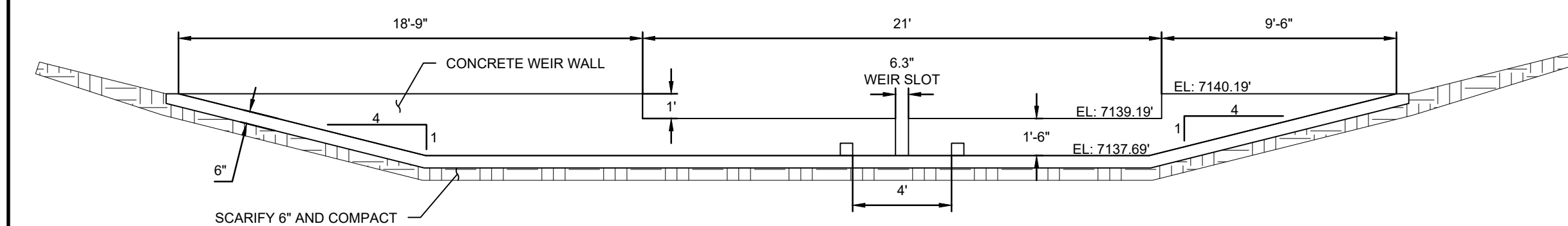
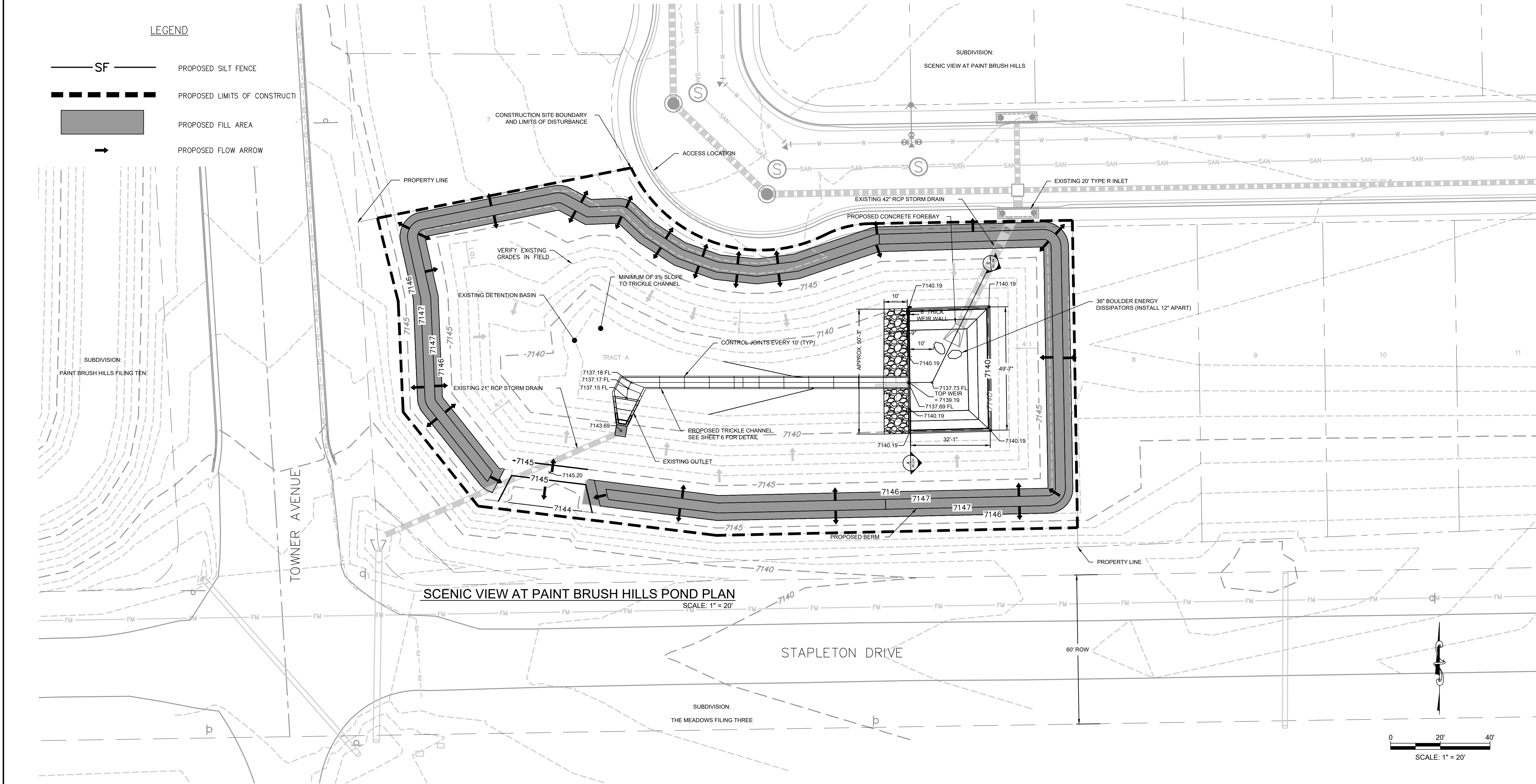
1. STORMWATER DISCHARGES FROM CONSTRUCTION SITES SHALL NOT CAUSE OR THREATEN TO CAUSE POLLUTION, CONTAMINATION, OR DEGRADATION OF STATE WATERS. ALL WORK AND EARTH DISTURBANCE SHALL BE DONE IN A MANNER THAT MINIMIZES POLLUTION OF ANY ON-SITE OR OFF-SITE WATERS, INCLUDING WETLANDS.
2. NOTWITHSTANDING ANYTHING DEPICTED IN THESE PLANS IN WORDS OR GRAPHIC REPRESENTATION, ALL DESIGN AND CONSTRUCTION RELATED TO ROADS, STORM DRAINAGE AND EROSION CONTROL SHALL CONFORM TO THE STANDARDS AND REQUIREMENTS OF THE MOST RECENT EDITION OF THE VERSION OF THE EROSION CONTROL MANUAL, EL PASO COUNTY, INCLUDING THE LAND DEVELOPMENT CODE, THE ENGINEERING CREDIT MANUAL, THE DRAINAGE CRITERIA MANUAL, AND THE DRAINAGE CRITERIA MANUAL VOLUME 2. ANY DEVIATIONS TO REGULATIONS AND STANDARDS MUST BE REQUESTED, AND APPROVED, IN WRITING.
3. A SEPARATE STORMWATER MANAGEMENT PLAN (SWMP) FOR THIS PROJECT SHALL BE COMPLETED AND AN EROSION AND STORMWATER QUALITY CONTROL PERMIT (EQSCP) ISSUED PRIOR TO COMMENCING CONSTRUCTION. DURING CONSTRUCTION THE SWMP IS THE RESPONSIBILITY OF THE DESIGNATED QUALIFIED STORMWATER MANAGER OR CERTIFIED EROSION CONTROL INSPECTOR AND SHALL BE LOCATED ON SITE AT ALL TIMES DURING CONSTRUCTION AND SHALL BE KEPT UP TO DATE WITH WORK PROGRESS AND CHANGES IN THE FIELD.
4. ONCE THE EROSION IS APPROVED AND A "NOTICE TO PROCEED" HAS BEEN ISSUED, THE CONTRACTOR MAY INSTALL THE INITIAL STAGE EROSION AND SEDIMENT CONTROL MEASURES AS INDICATED ON THE APPROVED GCD. A PRECONSTRUCTION MEETING BETWEEN THE CONTRACTOR, ENGINEER, AND EL PASO COUNTY WILL BE HELD PRIOR TO ANY CONSTRUCTION. IT IS THE RESPONSIBILITY OF THE APPLICANT TO COORDINATE THE MEETING TIME AND PLACE WITH COUNTY STAFF.
5. CONTROL MEASURES MUST BE INSTALLED PRIOR TO COMMENCEMENT OF ACTIVITIES THAT MAY CONTRIBUTE POLLUTANTS TO STORMWATER. TEMPORARY SEDIMENT AND EROSION CONTROL MEASURES FOR ALL SLOPES, CHANNELS, DITCHES, OR ANY DISTURBED LAND AREA SHALL BE COMPLETED IMMEDIATELY UPON COMPLETION OF THE DISTURBANCE.
6. ALL TEMPORARY SEDIMENT AND EROSION CONTROL MEASURES SHALL BE MAINTAINED AND REMAIN IN EFFECTIVE OPERATING CONDITION UNTIL PERMANENT SOIL EROSION CONTROL MEASURES ARE IMPLEMENTED AND FINAL STABILIZATION IS ESTABLISHED. ALL PERSONS AND VEHICLES ARE PROHIBITED FROM ENTERING OR VIOLATING THE ADEQUACY OF CONTROL MEASURES AT THE SITE AND IDENTIFY ANY CHANGES TO THOSE CONTROL MEASURES IS NEEDED TO ENSURE THE CONTINUED EFFECTIVE PERFORMANCE OF THE CONTROL MEASURES. ALL CHANGES TO TEMPORARY SEDIMENT AND EROSION CONTROL MEASURES MUST BE INCORPORATED INTO THE STORMWATER MANAGEMENT PLAN PRIOR TO IMPLEMENTATION.
7. TEMPORARY STABILIZATION SHALL BE IMPLEMENTED ON DISTURBED AREAS AND STOCKPILES WHERE GROUND DISTURBING CONSTRUCTION ACTIVITY HAS PERMANENTLY CEASED OR TEMPORARILY CEASED FOR LONGER THAN 14 DAYS. AN AREA THAT IS GOING TO REMAIN IN AN INTERIM STATE FOR MORE THAN 60 DAYS SHALL ALSO BE STABILIZED.
8. FINAL STABILIZATION MUST BE IMPLEMENTED AT ALL APPLICABLE CONSTRUCTION SITES. FINAL STABILIZATION IS ACHIEVED WHEN ALL GROUND DISTURBING ACTIVITIES ARE COMPLETE AND ALL DISTURBED AREAS EITHER HAVE A UNIFORM VEGETATIVE COVER WITH INDIVIDUAL PLANT SPECIES OR A VEGETATIVE COVER OF DISTURBANCE LEVELS ESTABLISHED OR EQUIVALENT PERMANENT ALTERNATIVE STABILIZATION METHOD IS IMPLEMENTED. ALL TEMPORARY SEDIMENT AND EROSION CONTROL MEASURES SHALL BE REMOVED UPON FINAL STABILIZATION AND BEFORE PERMIT CLOSURE.
9. ALL PERMANENT STORMWATER MANAGEMENT FACILITIES SHALL BE INSTALLED AS DEFINED IN THE APPROVED PLANS. ANY PROPOSED CHANGES THAT EFFECT THE HYDROLOGY OR HYDRAULICS OF A PERMANENT STORMWATER MANAGEMENT STRUCTURES MUST BE APPROVED BY THE ECM ADMINISTRATOR PRIOR TO IMPLEMENTATION.
10. ANY EARTH DISTURBANCE SHALL BE CONDUCTED IN SUCH A MANNER SO AS TO EFFECTIVELY MINIMIZE ACCELERATED SOIL EROSION AND RESULTING SEDIMENTATION. ALL DISTURBANCES SHALL BE DESIGNED, CONSTRUCTED, AND COMPLETED SO THAT THE EXPOSED AREA OF EARTH DISTURBANCE IS PROTECTED AND MAINTAINED WITHIN 50 HORIZONTAL FEET OF A WATERS OF THE STATE, UNLESS INFEASIBLE.
11. COMPACTION OF SOIL MUST BE PREVENTED IN AREAS DESIGNATED FOR INFILTRATION CONTROL MEASURES OR WHERE FINAL STABILIZATION WILL BE ACHIEVED BY VEGETATIVE COVER. AREAS DESIGNATED FOR INFILTRATION CONTROL SHALL ALSO BE PROTECTED FROM SEDIMENTATION DURING CONSTRUCTION UNTIL FINAL STABILIZATION IS ACHIEVED.
12. ANY TEMPORARY OR PERMANENT FACILITY DESIGNED AND CONSTRUCTED FOR THE CONVEYANCE OF STORMWATER AROUND, THROUGH, OR FROM THE EARTH DISTURBANCE AREA SHALL BE A STABILIZED CONVEYANCE DESIGNED TO MINIMIZE EROSION AND THE DISCHARGE OF SEDIMENT OFF SITE.

1. ALL DRAINAGE AND ROADWAY CONSTRUCTION SHALL MEET THE STANDARDS AND SPECIFICATIONS OF THE CITY OF COLORADO SPRING/EL PASO COUNTY DRAINAGE CRITERIA MANUAL, VOLUMES 1 AND 2, AND THE EL PASO COUNTY ENGINEERING CRITERIA MANUAL.
2. CONTRACTOR SHALL BE RESPONSIBLE FOR THE NOTIFICATION AND FIELD NOTIFICATION OF ALL EXISTING UTILITIES, WHETHER SHOWN ON THE PLANS OR NOT, BEFORE BEGINNING CONSTRUCTION. LOCATION OF EXISTING UTILITIES SHALL BE VERIFIED BY THE CONTRACTOR PRIOR TO CONSTRUCTION. CALL 811 TO CONTACT THE UTILITY NOTIFICATION CENTER OF COLORADO (UNCC).
3. CONTRACTOR SHALL KEEP A COPY OF THESE APPROVED PLANS, THE GRADING AND EROSION CONTROL PLAN, THE STORMWATER MANAGEMENT PLAN (SWMP), THE SOILS AND GEOTECHNICAL REPORT, AND THE APPROPRIATE DESIGN AND CONSTRUCTION STANDARDS AND SPECIFICATIONS AT THE JOB SITE AT ALL TIMES DURING THE FOLLOWING:
 - a. EL PASO COUNTY ENGINEERING CRITERIA MANUAL (ECM)
 - b. CITY OF COLORADO SPRING/EL PASO COUNTY DRAINAGE CRITERIA MANUAL, VOLUMES 1 AND 2
 - c. COLORADO DEPARTMENT OF TRANSPORTATION (CDOT) STANDARD SPECIFICATIONS FOR ROAD AND BRIDGE CONSTRUCTION
 - d. CDOT M & S STANDARDS
4. NOTWITHSTANDING ANYTHING DEPICED IN THESE PLANS IN WORDS OR GRAPHIC REPRESENTATION, ALL DESIGN AND CONSTRUCTION RELATED TO ROAD, STORM DRAIN AND EROSION CONTROL, SHALL CONFORM TO THE STANDARDS AND REQUIREMENTS OF THE MOST RECENT VERSION OF THE RELEVANT ADOPTED EL PASO COUNTY STANDARDS, INCLUDING THE LAND DEVELOPMENT CODE, THE ENGINEERING CRITERIA MANUAL, THE DRAINAGE CRITERIA MANUAL, AND THE DRAINAGE CRITERIA MANUAL VOLUME 2. ANY DEVIATIONS FROM REGULATIONS AND STANDARDS MUST BE REQUESTED, AND APPROVED, IN WRITING. ANY MODIFICATIONS NECESSARY TO MEET CRITERIA AFTER-THE-FACT WILL BE ENTIRELY THE DEVELOPER'S RESPONSIBILITY TO RECTIFY.
5. IT IS THE DESIGN ENGINEER'S RESPONSIBILITY TO ACCURATELY SHOW EXISTING CONDITIONS, BOTH ONSITE AND OFFSITE, ON THE CONSTRUCTION PLANS. ANY MODIFICATIONS NECESSARY DUE TO CONFLICTS, OMISSIONS, OR CHANGED CONDITIONS WILL BE ENTIRELY THE DEVELOPER'S RESPONSIBILITY TO RECTIFY.
6. CONTRACTOR SHALL SCHEDULE A PRE-CONSTRUCTION MEETING WITH EL PASO COUNTY PLANNING AND COMMUNITY DEVELOPMENT (PCD) - INSPECTIONS, PRIOR TO STARTING CONSTRUCTION.
7. IT IS THE CONTRACTOR'S RESPONSIBILITY TO UNDERSTAND THE REQUIREMENTS OF ALL JURISDICTIONAL AGENCIES AND TO OBTAIN ALL REQUIRED PERMITS, INCLUDING BUT NOT LIMITED TO EL PASO COUNTY EROSION AND STORMWATER QUALITY CONTROL PERMIT (ESQCP), REGIONAL BUILDING FLOODPLAIN DEVELOPMENT PERMIT, U.S. ARMY CORPS OF ENGINEERS-ISSUED 401 AND/OR 404 PERMITS, AND COUNTY AND STATE FUGITIVE DUST PERMITS.
8. CONTRACTOR SHALL NOT DEViate FROM THE PLANS WITHOUT FIRST OBTAINING WRITTEN APPROVAL FROM THE DESIGN ENGINEER AND PCD. CONTRACTOR SHALL NOTIFY THE DESIGN ENGINEER IMMEDIATELY UPON DISCOVERY OF ANY ERRORS OR INCONSISTENCIES.
9. ALL STORM DRAIN PIPE SHALL BE CLASS III RCP UNLESS OTHERWISE NOTED AND APPROVED BY PCD.
10. CONTRACTOR SHALL COORDINATE GEOTECHNICAL TESTING PER ECM STANDARDS. PAVEMENT DESIGN SHALL BE APPROVED BY EL PASO COUNTY PCD PRIOR TO PLACEMENT OF CURB AND GUTTER PAVEMENT.
11. ALL CONSTRUCTION TRAFFIC MUST ENTER/EXIT THE SITE AT APPROVED CONSTRUCTION ACCESS POINTS.
12. SIGHT VISIBILITY TRIANGLES AS IDENTIFIED IN THE PLANS SHALL BE PROVIDED AT ALL INTERSECTIONS. OBSTRUCTIONS GREATER THAN 18 INCHES ABOVE FLOWLINE ARE NOT ALLOWED WITHIN SIGHT TRIANGLES.
13. SIGNING AND STRIPING SHALL COMPLY WITH EL PASO COUNTY DOT AND MUTCD CRITERIA. [IF APPLICABLE, ADDITIONAL SIGNING AND STRIPING NOTICES WILL BE PROVIDED.]
14. CONTRACTOR SHALL OBTAIN ANY PERMITS REQUIRED BY EL PASO COUNTY DOT, INCLUDING WORK WITHIN THE RIGHT-OF-WAY AND SPECIAL TRAVELER PERMITS.
 - e. THE LIMITS OF CONSTRUCTION SHALL REMAIN WITHIN THE PROPERTY LINE UNLESS OTHERWISE NOTED. THE OWNER/DEVELOPER SHALL OBTAIN WRITTEN PERMISSION AND EASEMENTS, WHERE REQUIRED, FROM ADJOINING PROPERTY OWNER(S) PRIOR TO ANY OFF-SITE DISTURBANCE, GRADING, OR CONSTRUCTION.

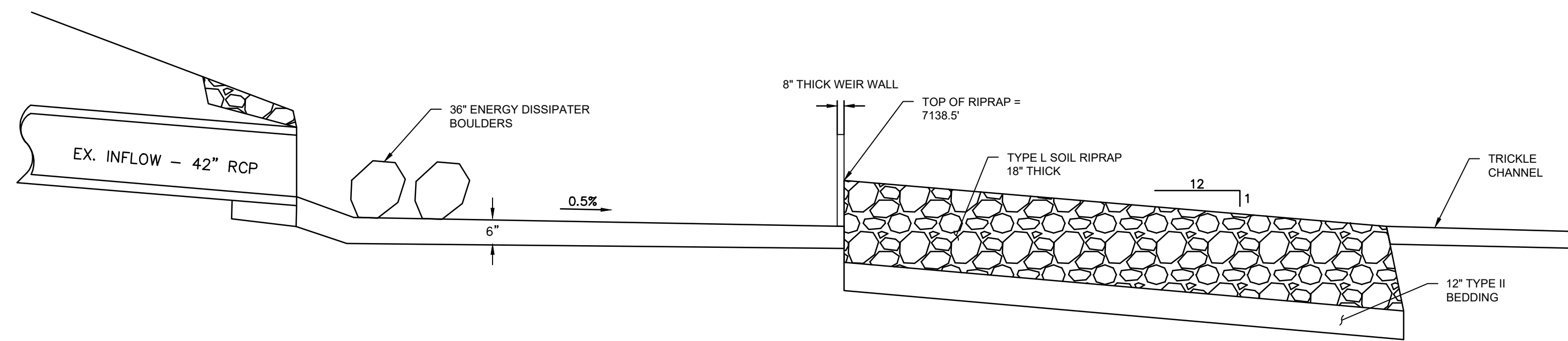
[illegible]

SCENIC VIEW AT PAINT BRUSH HILLS DETENTION POND MODIFICATIONS		description		NOTES	
DRAWN BY: JCS		DESIGNED BY: GEW			
JOB NUMBER: 1070.0022					
DATE: 8/23/22					
SCALE: N.T.S.					
DRAWING NAME: NOTES					
SHEET NO: 2 of 8					

S:\1070 - Paint Brush Hills Metropolitan District\1070.0022 - Scenic View Detention Pond\DWG\03 SITE PLAN.dwg, 03 GRADING PLAN, 8/23/2022, 1:32:09 PM, jschneider, 1:1



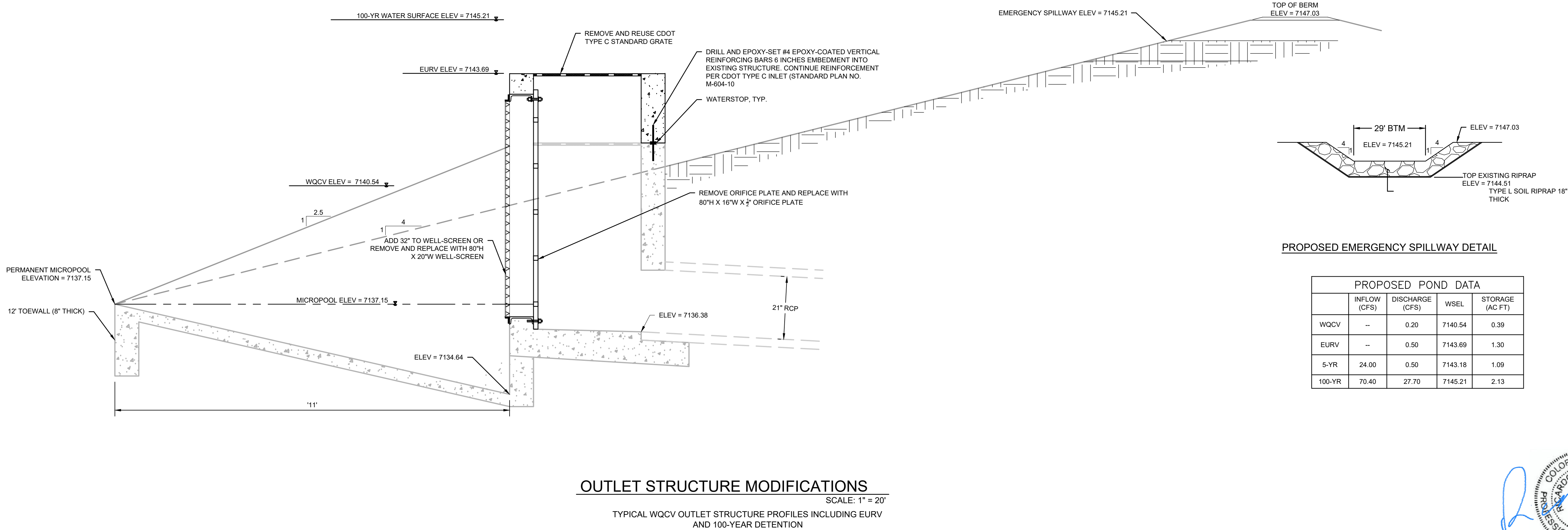
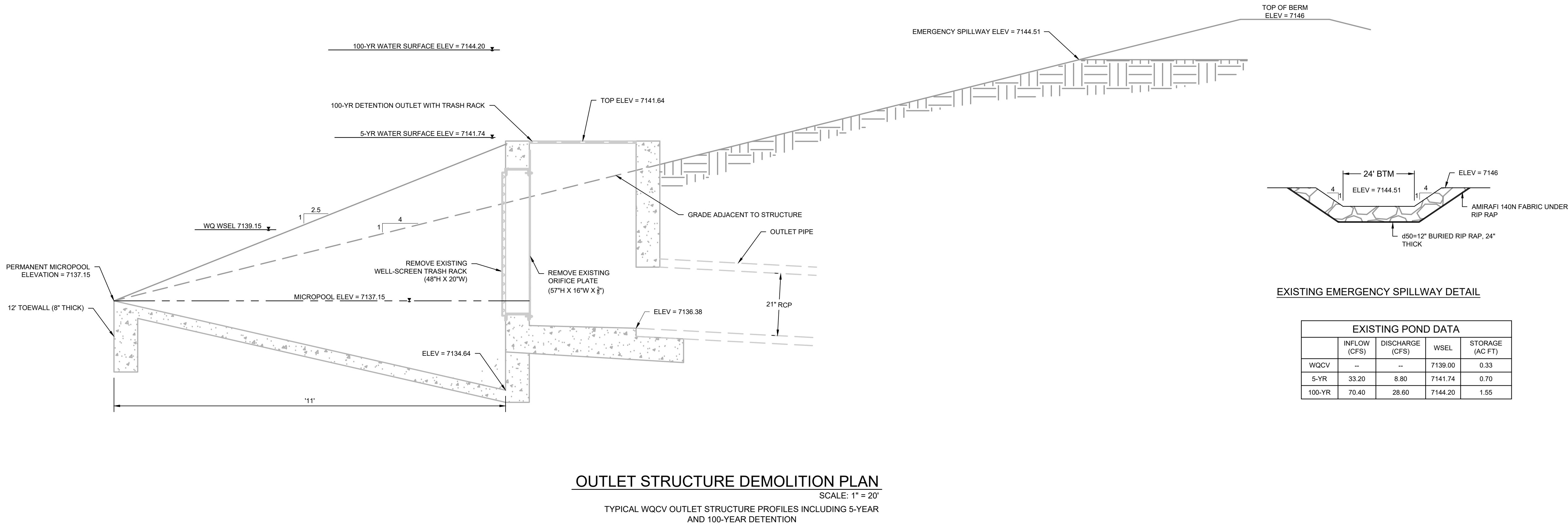
A
WEIR WALL SECTION
SCALE: 1" = 5'



B
FOREBAY STRUCTURE SECTION
SCALE: 1" = 20'

48 hours before you dig. CALL UTILITY NOTIFICATION CENTER OF COLORADO (UNCC)		811	
Gas, Electric, Telephone, CATV, and Penetration Eastern Pipeline Locations		SCALE VERIFICATION	
BAR IS ONE INCH ON ORIGINAL DRAWING		IF NOT ONE INCH ON THIS SHEET SCALE ACCORDINGLY	
NO.	REVISIONS	DATE	BY
	DESCRIPTION		
RG AND ASSOCIATES, LLC 4885 Ward Road, Suite 100 • Wheat Ridge, CO 80033 Del Norte • Gypsum • Wheat Ridge 303-293-8107 • www.rgengineers.com			
SCENIC VIEW AT PAINT BRUSH HILLS DETENTION POND MODIFICATIONS		GRADING PLAN	
DESIGNED BY: JCS		DESIGNED BY: GEW	
JOB NUMBER: 1070.0022			
DATE: 8/23/22			
SCALE: 1" = 20'			
DRAWING NAME: GRADING			
SHEET NO: 3		of 8	

S:\1070 - Paint Brush Hills Metropolitan District\1070.0022 - Scenic View Detention Pond\DWG\04 DETAILS.dwg, 05 OUTLET STRUCTURE, 8/23/2022 1:32:16 PM, jcanhiser, 1:1



48 hours before you file CALL UTILITY NOTIFICATION CENTER OF COLORADO (UNCC)

811

Gas, Electric, Telephone, CATV, and Penetration Eastern Pipeline Locations

SCALE VERIFICATION
BAR IS ONE INCH ON ORIGINAL DRAWING
IF NOT ONE INCH ON THIS SHEET SCALE ACCORDINGLY

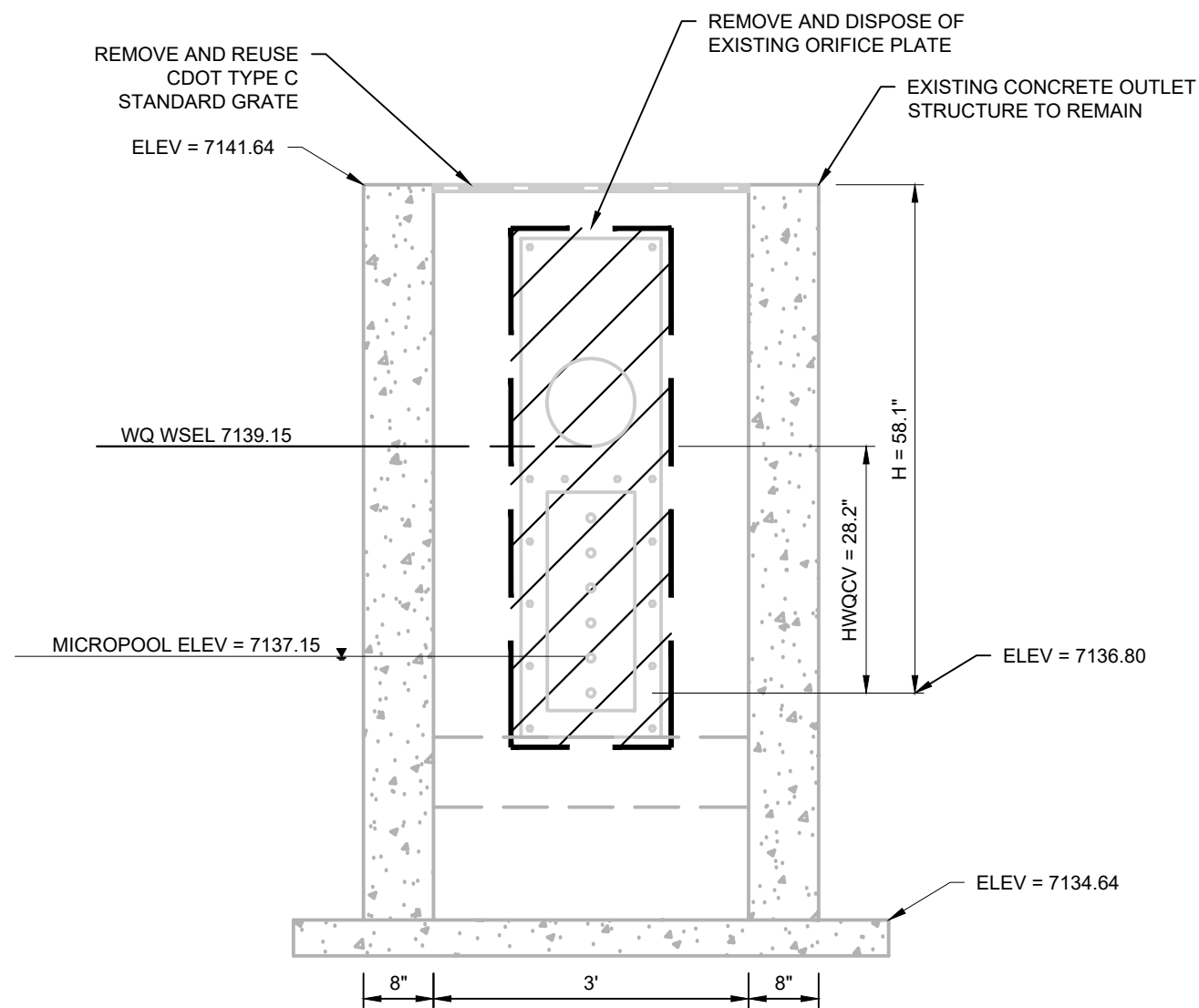
REVISIONS		BY
NO.	DESCRIPTION	DATE

RG AND ASSOCIATES, LLC

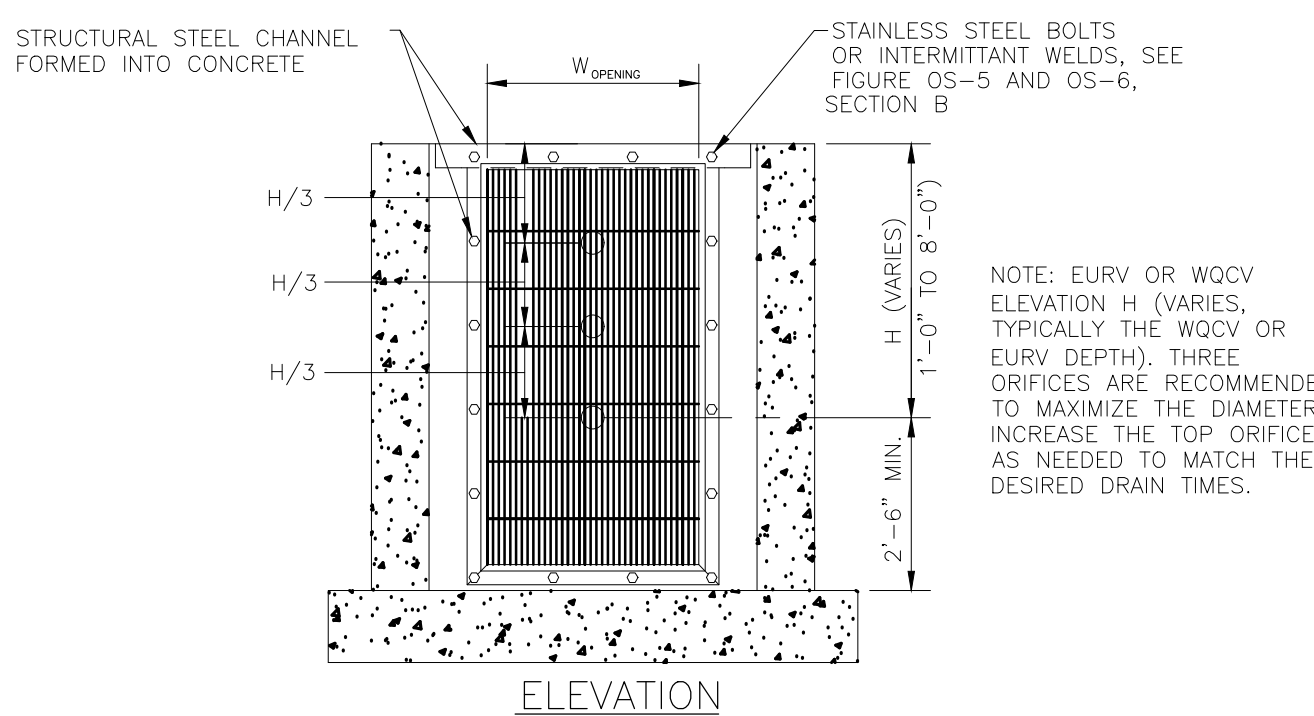
4885 Ward Road, Suite 100 • Wheat Ridge, CO 80033
Del Norte • Gypsum • Wheat Ridge
303-293-8307 • www.rgengineers.com

SCENIC VIEW AT PAINT BRUSH HILLS DETENTION POND MODIFICATIONS		DESIGNED BY:
OUTLET STRUCTURE		GEW
PAINT BRUSH HILLS METROPOLITAN DISTRICT EL PASO COUNTY, COLORADO		
DRAWN BY:	JCS	DESIGNED BY:
JOB NUMBER:	1070.0022	
DATE:	8/23/22	
SCALE:	1" = 20'	
DRAWING NAME:	OUTLET	
SHEET NO:	4	of 8

S:\1070 - Paint Brush Hills Metropolitan District\1070.0022 - Scenic View Detention Pond\DWG\04 DETAILS.dwg, 08/23/2022, 1:32:10 PM, jschneider, 1:1



OUTLET STRUCURE DEMOLITION DETAIL
SCALE: 1" = 20'



- ORIFICE PLATE NOTES:
1. PROVIDE CONTINUOUS NEOPRENE GASKET MATERIAL BETWEEN THE ORIFICE PLATE AND CONCRETE.
 2. BOLT PLATE TO CONCRETE 12" MAX. ON CENTER. SEE TABLE OS-2 FOR PLATE THICKNESS.
- EURV AND WQCV TRASH RACKS:
1. WELL-SCREEN TRASH RACKS SHALL BE STAINLESS STEEL AND SHALL BE ATTACHED BY INTERMITTENT WELDS ALONG THE EDGE OF THE MOUNTING FRAME.
 2. BAR GATE TRASH RACKS SHALL BE ALUMINUM AND SHALL BE BOLTED USING STAINLESS STEEL HARDWARE.
 3. TRASH RACK OPEN AREAS ARE FOR SPECIFIED TRASH RACK MATERIALS. TOTAL TRASH RACK SIZE MAY NEED TO BE ADJUSTED FOR MATERIALS HAVING DIFFERENT OPEN AREA/GROSS AREA RATIO (R VALUE).
 4. STRUCTURAL DESIGN OF TRASH RACKS SHALL BE BASED ON FULL HYDROSTATIC HEAD WITH ZERO HEAD DOWNSTREAM OF THE RACK.
- OVERFLOW SAFETY GRATES:
1. ALL SAFETY GRATES SHALL BE MOUNTED USING STAINLESS STEEL HARDWARE AND PROVIDED WITH HINGED AND LOCKABLE OR BOLTABLE ACCESS PANELS.
 2. SAFETY GRATES SHALL BE STAINLESS STEEL, ALUMINUM, OR STEEL. STEEL GRATES SHALL BE HOT DIP GALVANIZED AND MAY BE HOT POWDER COATED AFTER GALVANIZING.
 3. SAFETY GRATES SHALL BE DESIGNED SUCH THAT THE DIAGONAL DIMENSION OF EACH OPENING IS SMALLER THAN THE DIAMETER OF THE OUTLET PIPE.
 4. STRUCTURAL DESIGN OF SAFETY GRATES SHALL BE BASED ON FULL HYDROSTATIC HEAD WITH ZERO HEAD DOWNSTREAM OF THE RACK.

FIGURE OS-4 PROPOSED ORIFICE PLATE AND TRASH RACK
DETAILS AND NOTES
NTS

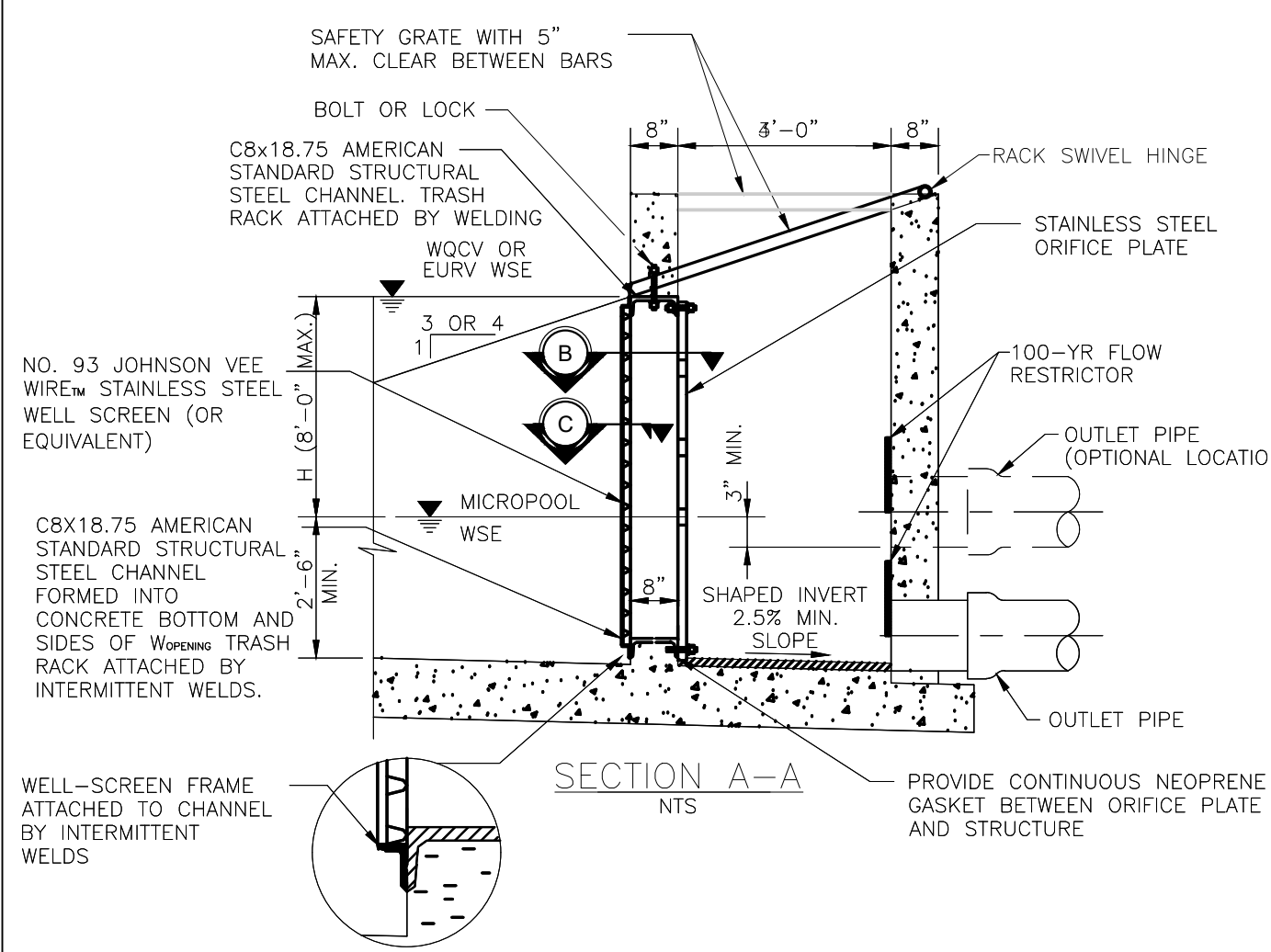


FIGURE OS-5 TYPICAL OUTLET STRUCTURE
WITH WELL SCREEN TRASH RACK

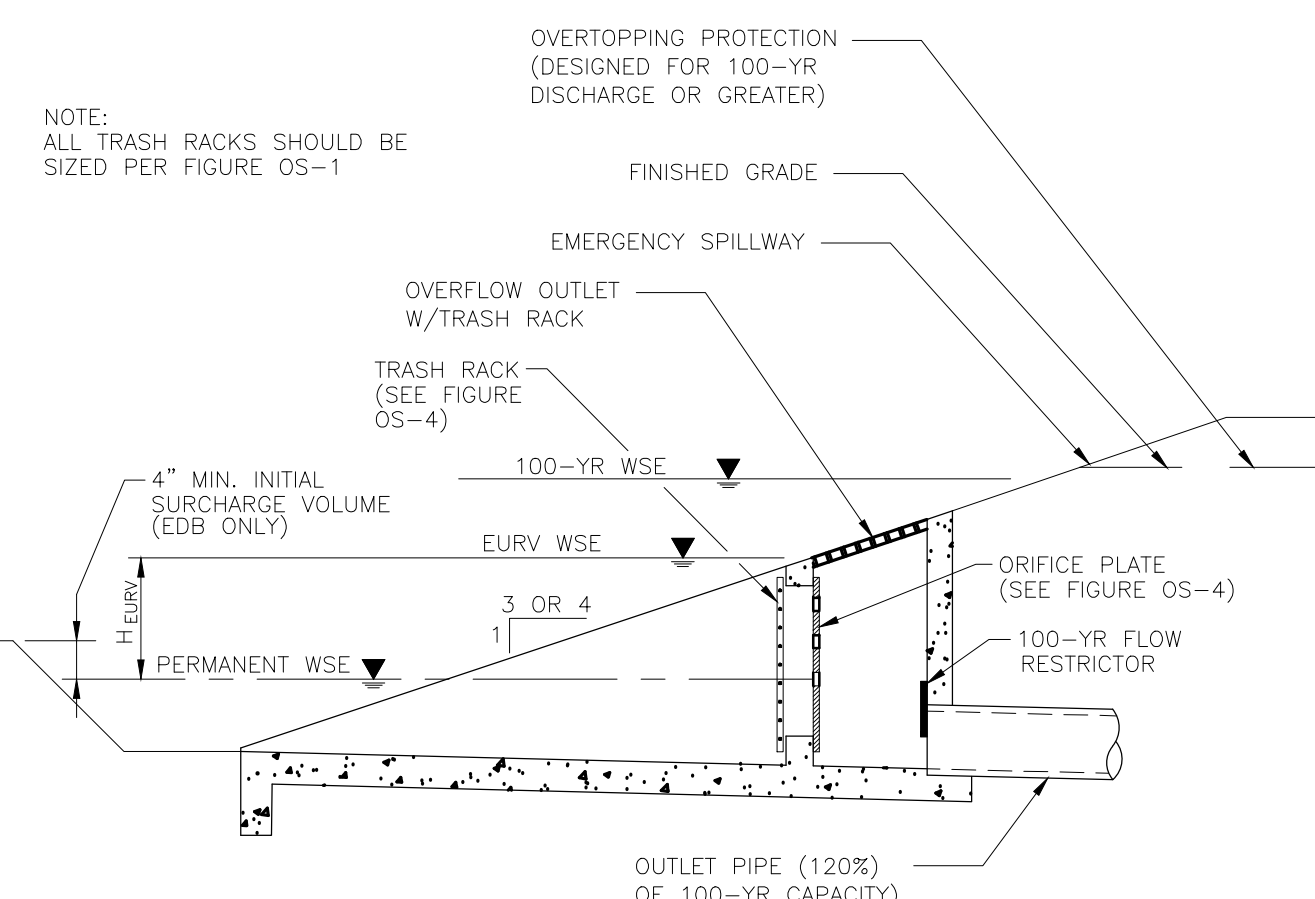


FIGURE OS-2 TYPICAL OUTLET STRUCTURE
FOR FULL SPECTRUM DETENTION

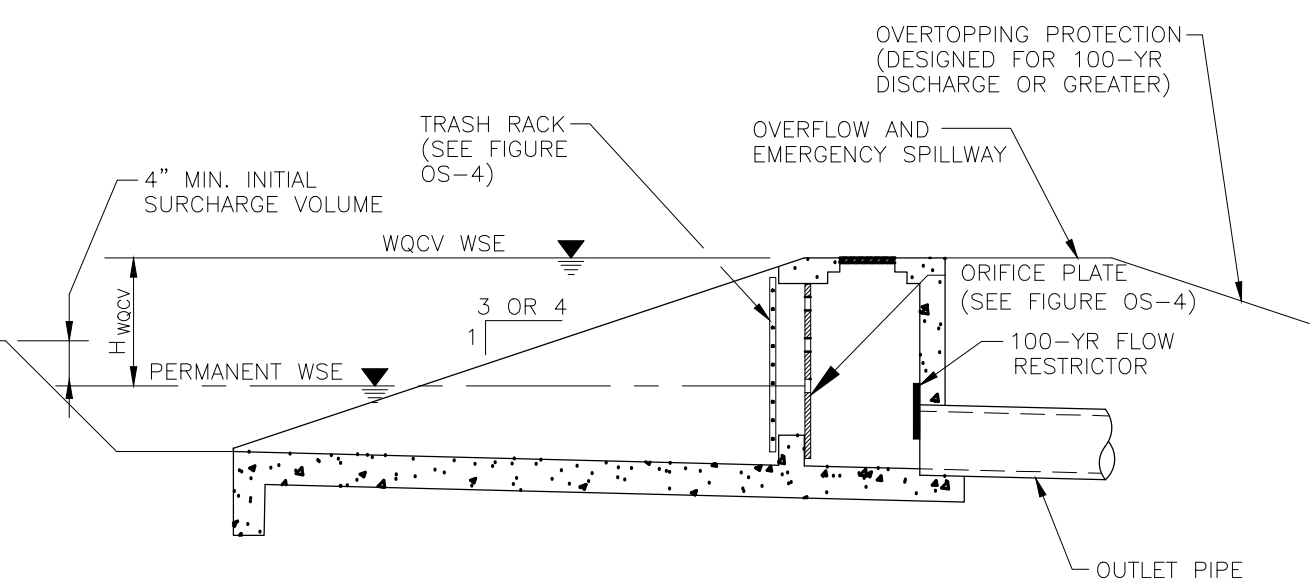
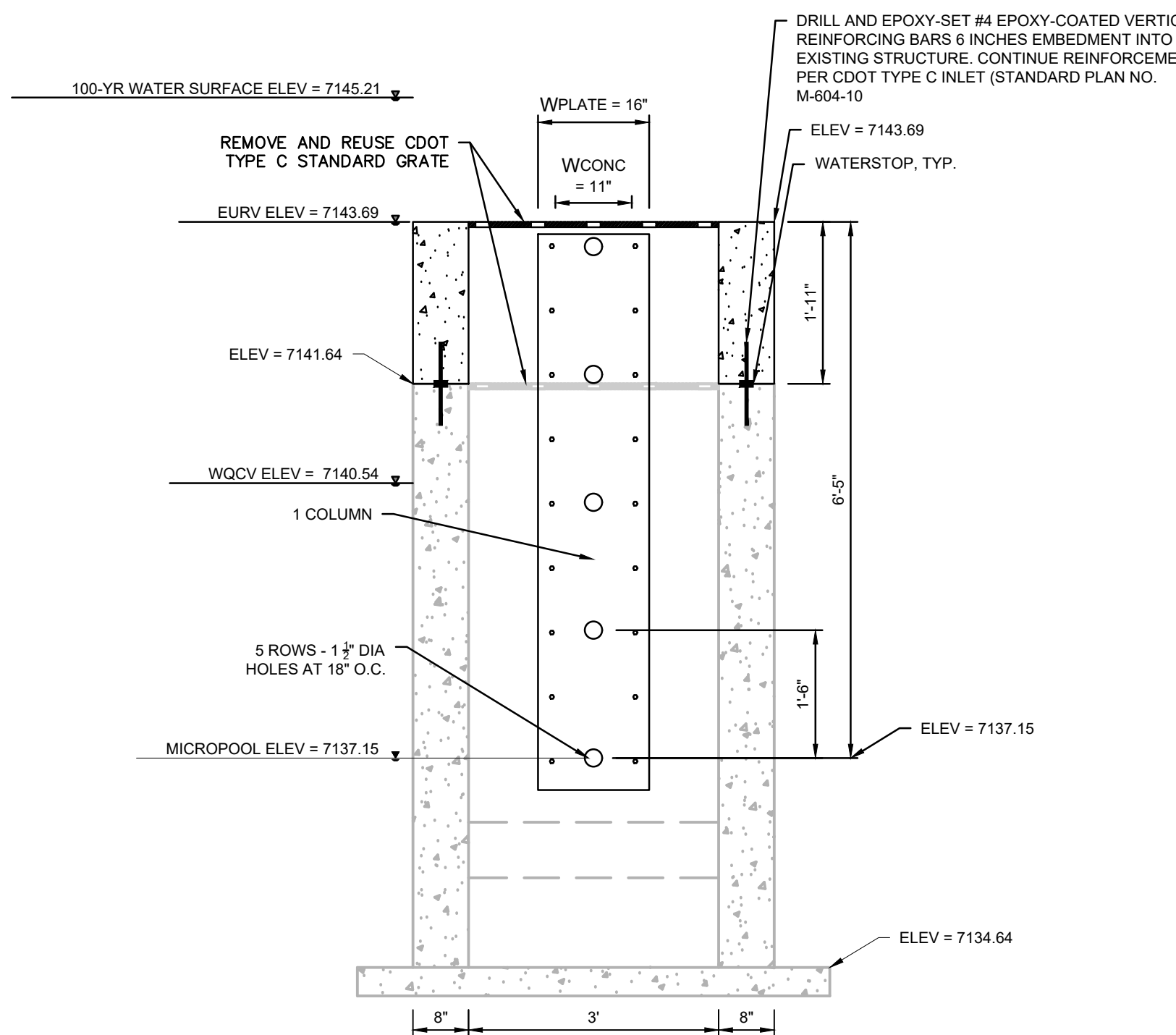
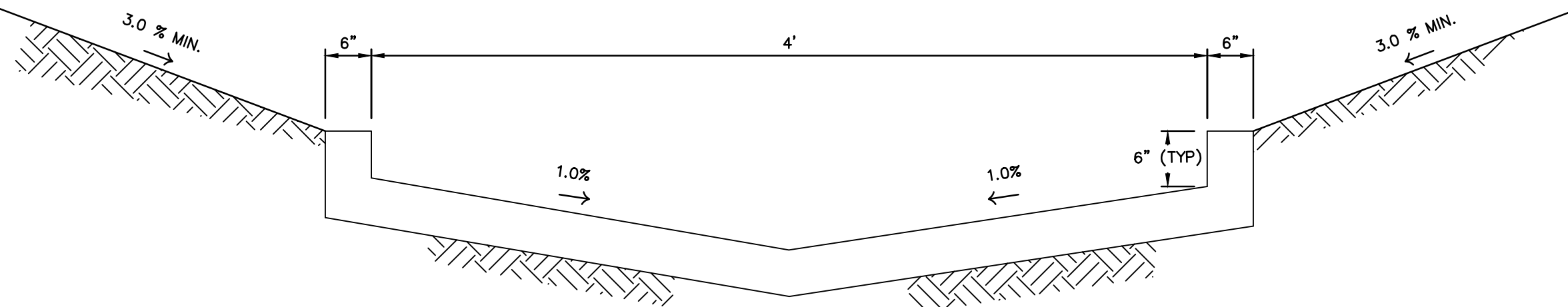


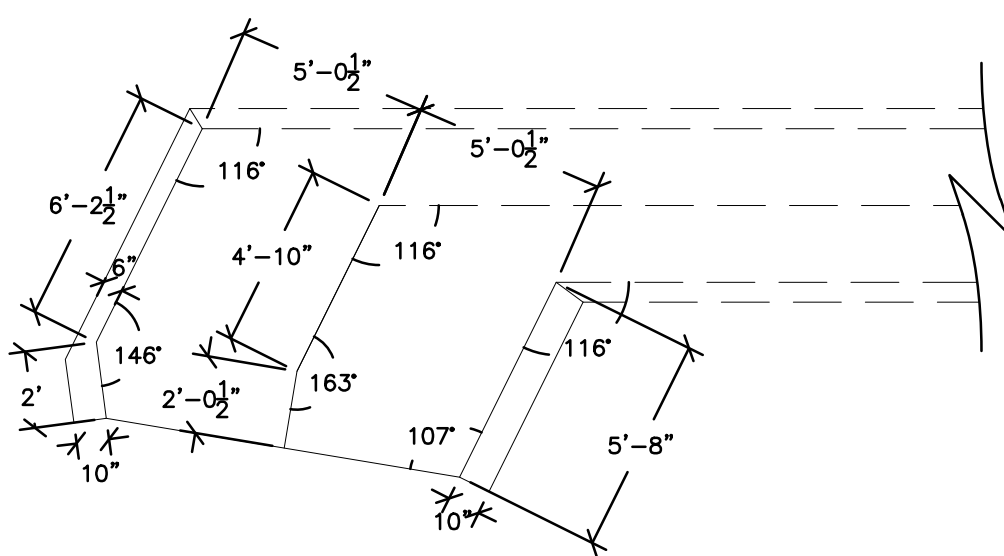
FIGURE OS-3 PROPOSED TYPICAL OUTLET STRUCTURE FOR
WQCV TREATMENT AND ATTENUATION



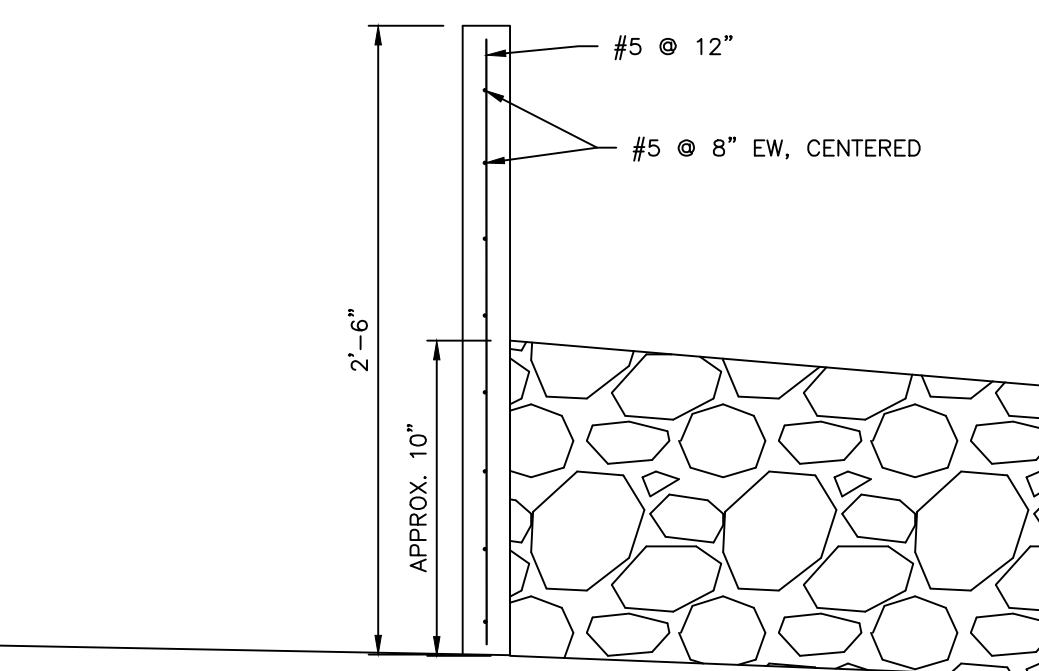
OUTLET STRUCTURE MODIFICATION
SCALE: 1" = 20'



TRICKLE CHANNEL TYP. SECTION
N.T.S.



TRICKLE CHANNEL TRANSITION
SCALE: 1" = 20'



WEIR WALL REINFORCING DETAIL
SCALE: 1" = 20'

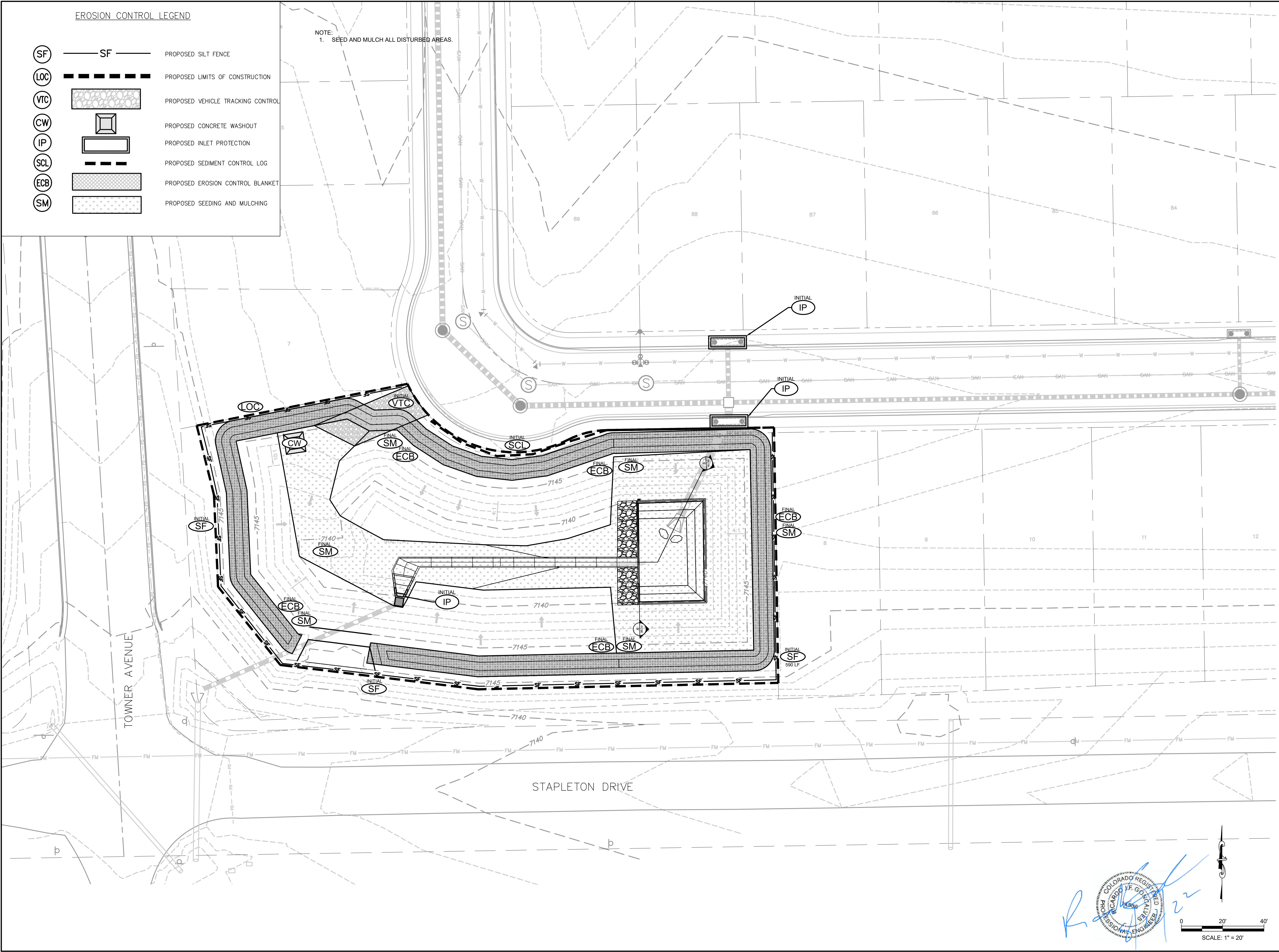


48 hours before you dig, CALL UTILITY NOTIFICATION CENTER OF COLORADO (UNCC)		811		Go.Electric, Telephone, CATV, and Penetration Eastern Pipeline Locations	
NO.		DATE		BY	
REVISIONS		DESCRIPTION			
DRAWN BY:		DESIGNED BY:			
JOB NUMBER:		1070.0022			
DATE:		8/23/22			
SCALE:		N.T.S.			
DRAWING NAME:		DETAILS			
SHEET NO:		5		of 8	

RG AND ASSOCIATES, LLC
4885 Ward Road, Suite 100 • Wheat Ridge, CO 80033
Del Norte • Gypsum • Wheat Ridge
303-293-8107 • www.rgengineers.com

SCENIC VIEW AT PAINT BRUSH HILLS
DETENTION POND MODIFICATIONS
DETAILS
PAINT BRUSH HILLS METROPOLITAN DISTRICT
EL PASO COUNTY, COLORADO

S:\1070 - Paint Brush Hills Metropolitan District\1070.0022 - Scenic View Detention Pond\DWG\03 SITE PLAN.dwg, 07 EC PLAN, 8/23/2022 1:32:27 PM, jschneider, 1:1



SCENIC VIEW AT PAINT BRUSH HILLS DETENTION POND MODIFICATIONS		EROSION CONTROL PLAN		PAINT BRUSH HILLS METROPOLITAN DISTRICT EL PASO COUNTY, COLORADO	
DRAWN BY: JCS		DESIGNED BY: GEW		PROJECT TO: SCENIC VIEW DETENTION POND MODIFICATIONS	
JOB NUMBER: 1070.0022		DATE: 8/23/22		DRAWING NAME: EC PLAN	
SCALE: 1" = 20'		SHEET NO.: 6		of 8	

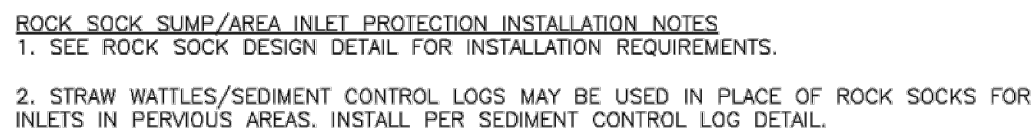
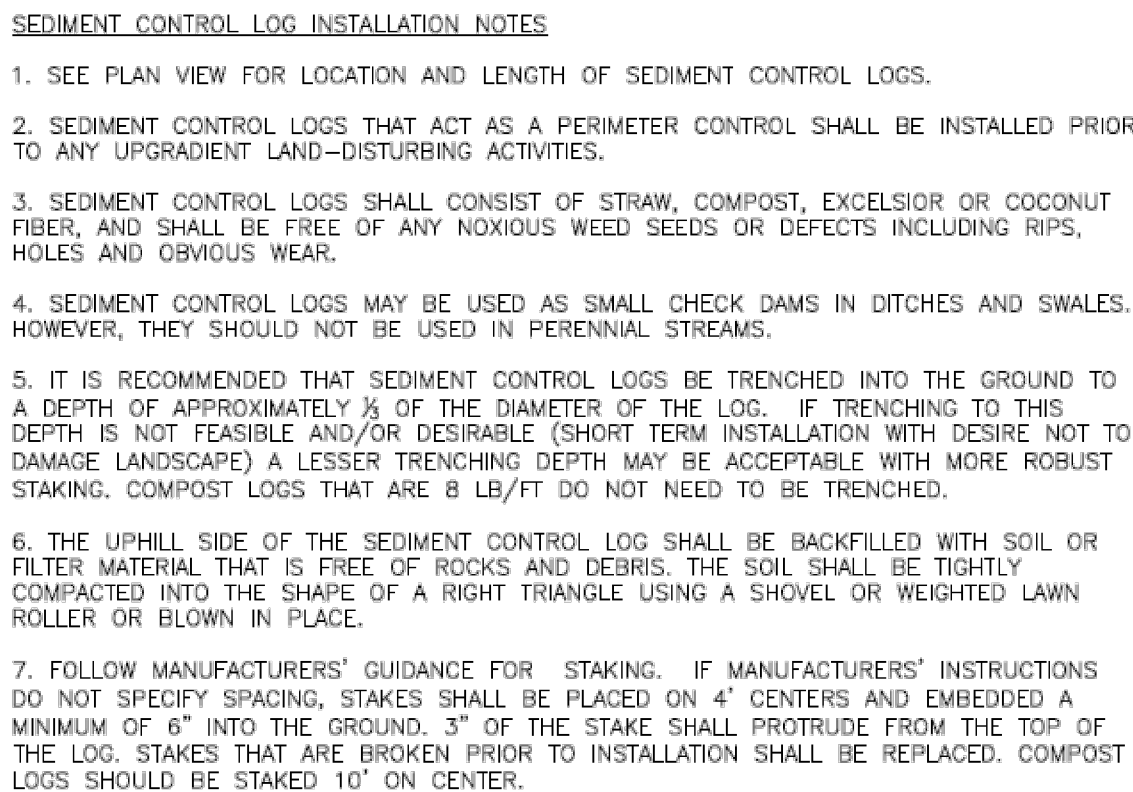
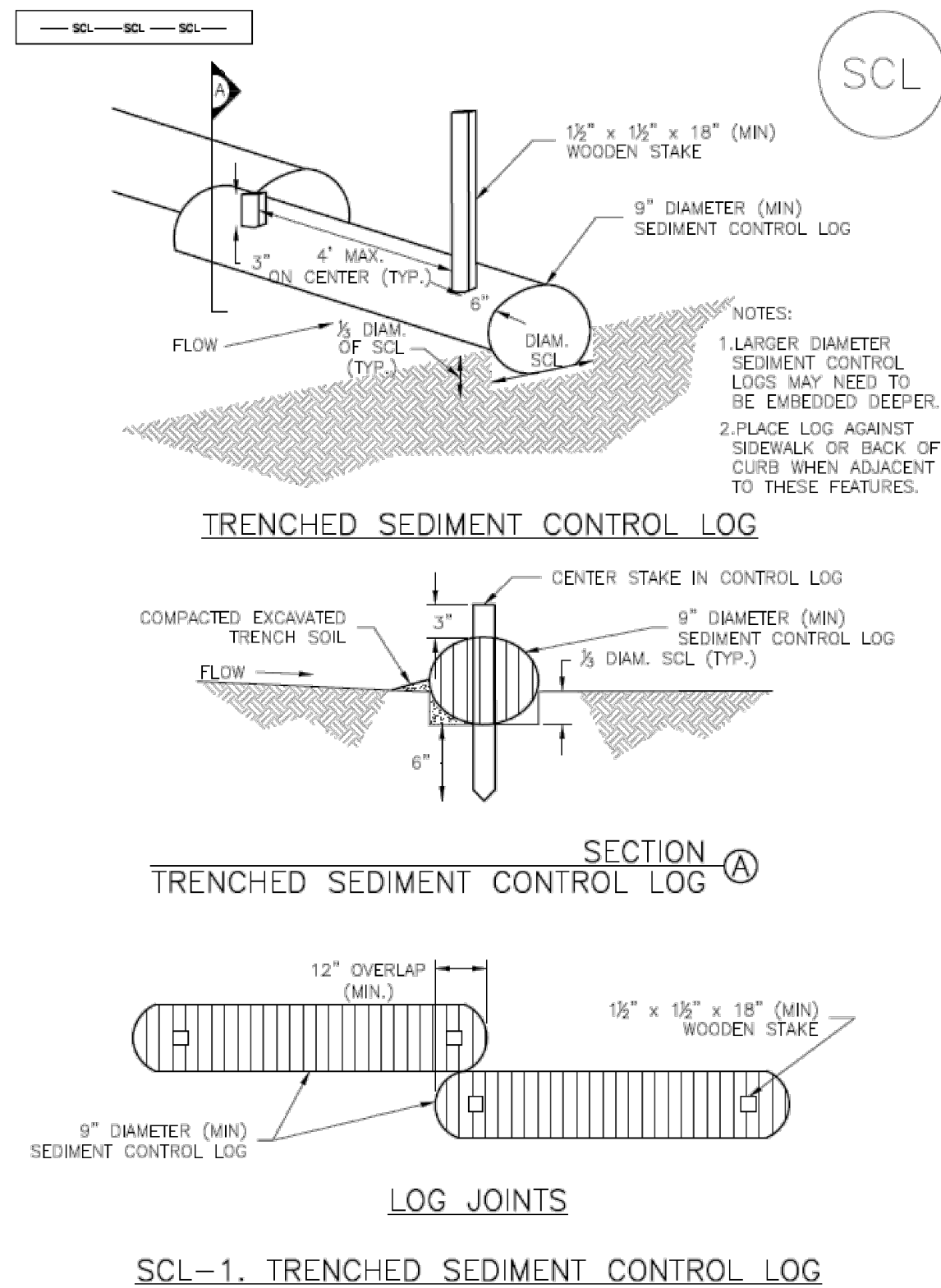
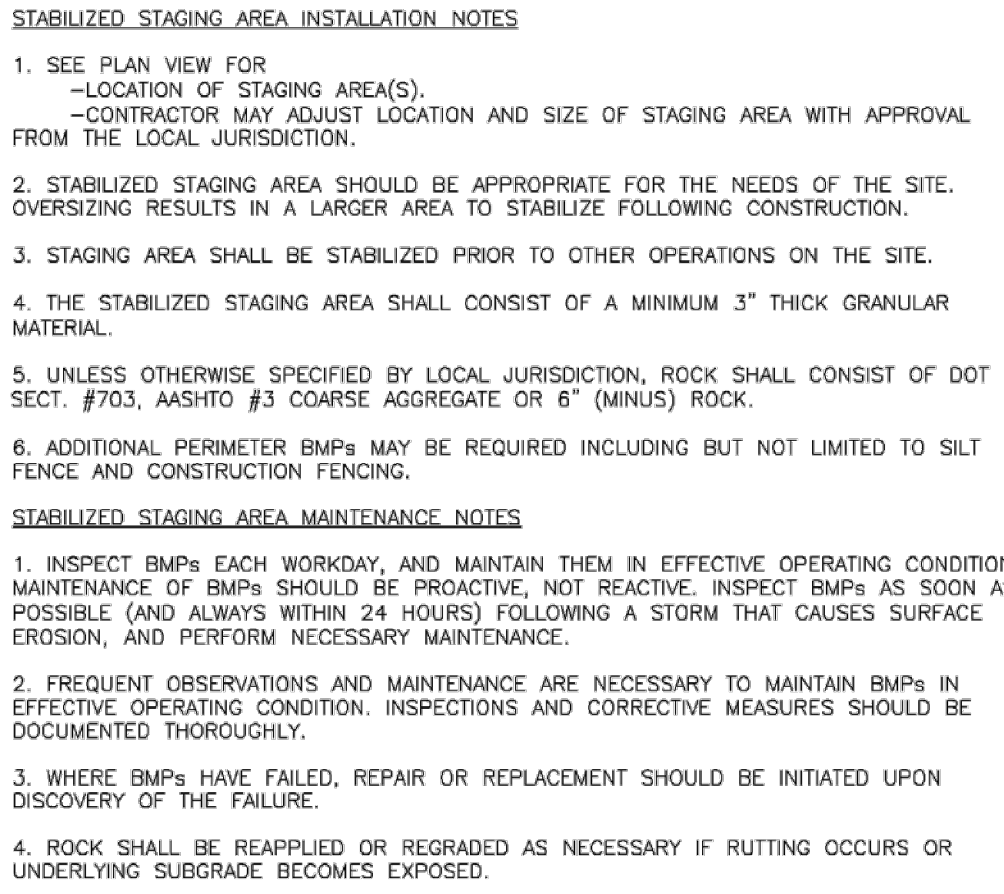
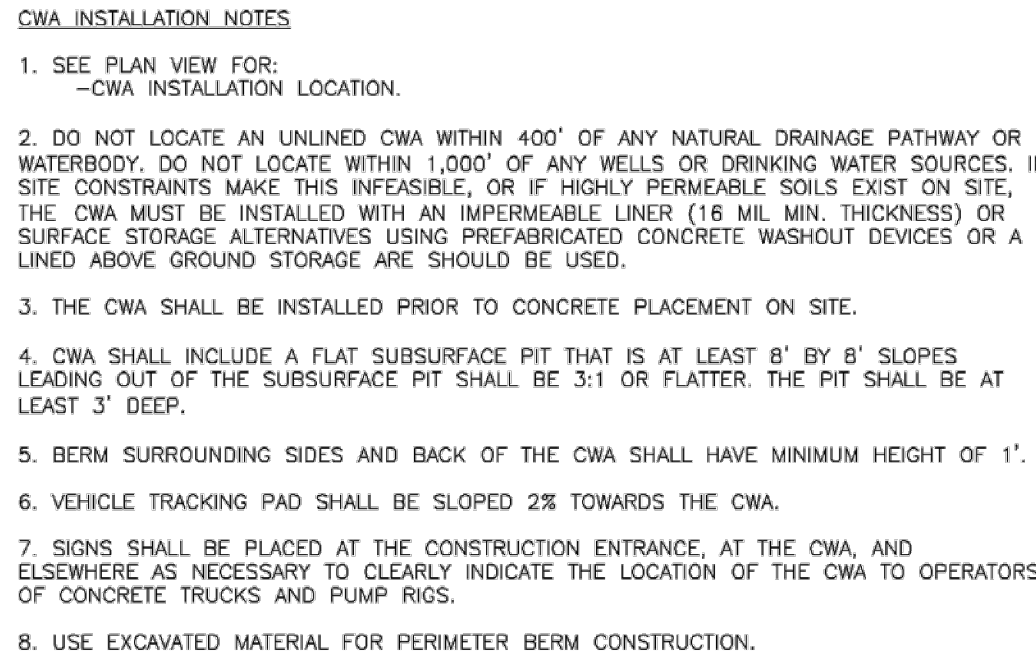
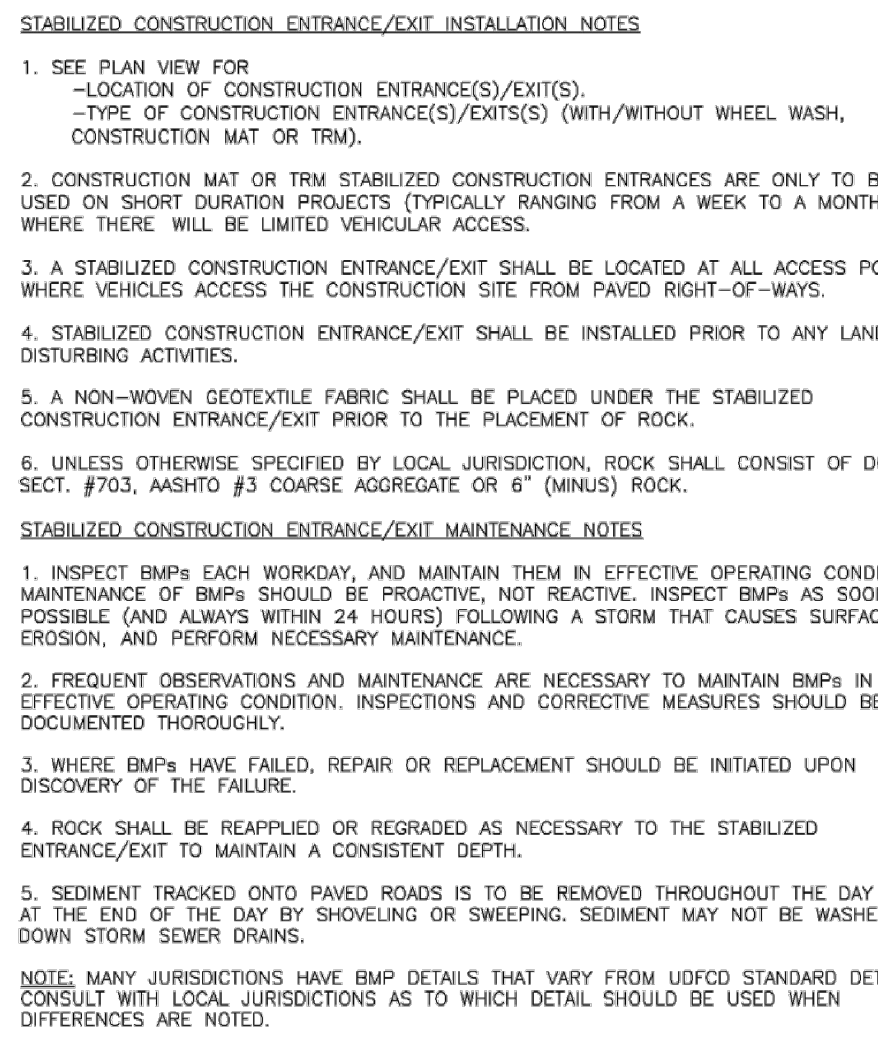
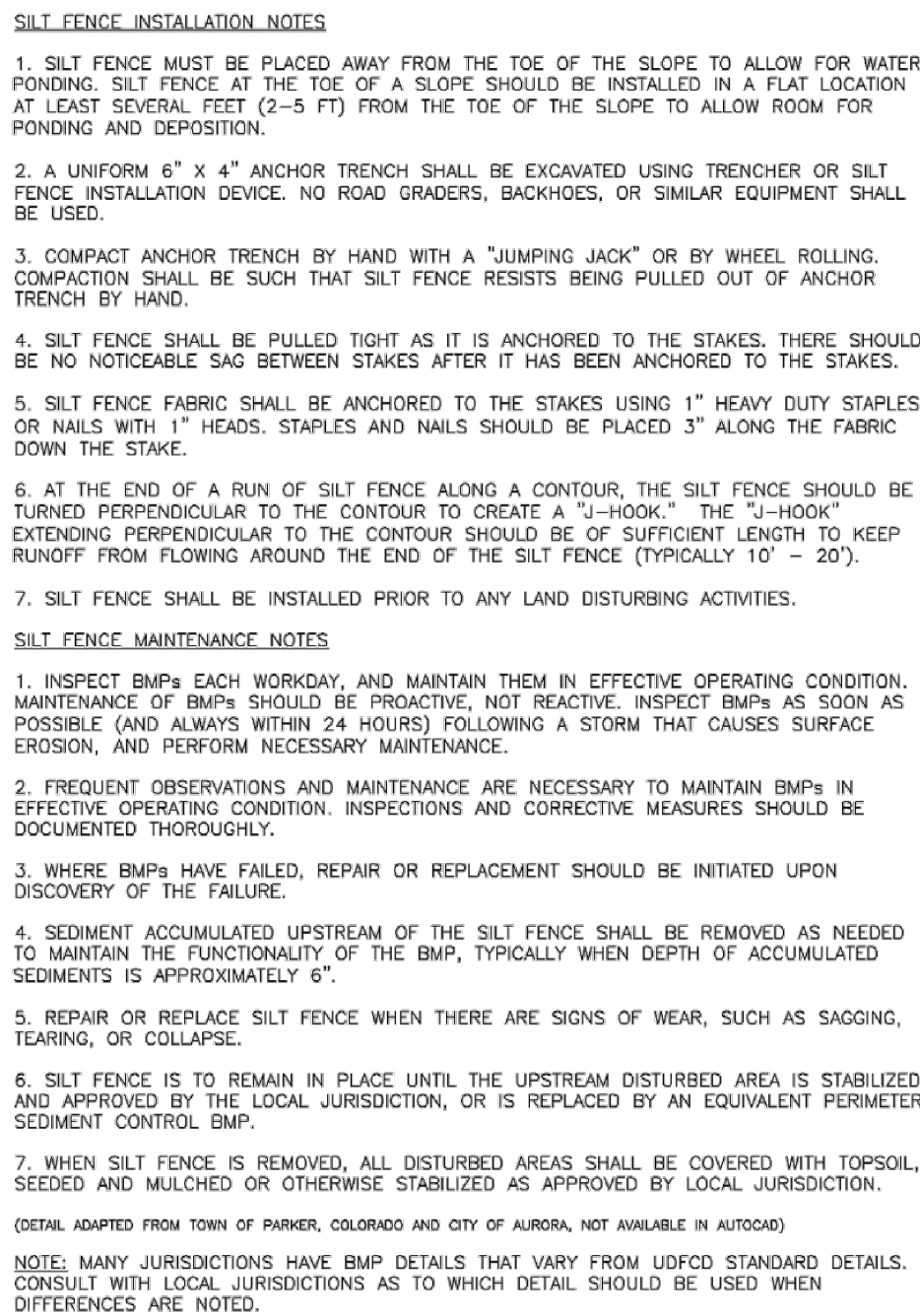
48 hours before you dig, call UTILITY
NOTIFICATION CENTER OF COLORADO (UNCC)

811

Gas, Electric, Telephone, CATV, and
Fiber Optic Lines
Penetration Eastern Pipeline Locations

SCALE VERIFICATION
BAR IS ONE INCH ON ORIGINAL DRAWING
IF NOT ONE INCH ON THIS SHEET
SCALE ACCORDINGLY

RG AND ASSOCIATES, LLC
4885 Ward Road, Suite 100 • Wheat Ridge, CO 80033
Del Norte • Gypsum • Wheat Ridge
303-293-8107 • www.rgengineers.com



 <p>RG AND ASSOCIATES, LLC 4835 Ward Road, Suite 100 • Wheat Ridge, CO 80033 Del Norte • Gypsum • Wheat Ridge 303-233-8107 • www.rgengineer.com</p>		REVISIONS NO. DESCRIPTION DATE BY	
<p>SCENIC VIEW AT PAINT BRUSH HILLS DETENTION POND MODIFICATIONS</p> <p><i>description</i></p> <p>EC DETAILS</p> <p><i>prepared for</i></p> <p>PAINT BRUSH HILLS METROPOLITAN DISTRICT EL PASO COUNTY, COLORADO</p>			
DRAWN BY: JGS		DESIGNED BY: GEW	
JOB NUMBER: 1070.0022			
DATE: 8/23/22			
SCALE: N.T.S.			
DRAWING NAME: EC DETAILS			
SHEET NUMBER: 7 of 8			

Seeding dates for the highest success probability of perennial species along the Front Range are generally in the spring from April through early May and in the fall after the first of September until the ground freezes. If the area is irrigated, seeding may occur in summer months, as well. See Table TS/PS-3 for appropriate seeding dates.

Table TS/PS-1. Minimum Drill Seeding Rates for Various Temporary Annual Grasses

Species* (Common name)	Growth Season ^b	Pounds of Pure Live Seed (PLS)/acre ^c	Planting Depth (inches)
1. Oats	Cool	35 - 50	1 - 2
2. Spring wheat	Cool	25 - 35	1 - 2
3. Spring barley	Cool	25 - 35	1 - 2
4. Annual ryegrass	Cool	10 - 15	½
5. Millet	Warm	3 - 15	½ - ¾
6. Sudangrass	Warm	5–10	½ - ¾
7. Sorghum	Warm	5–10	½ - ¾
8. Winter wheat	Cool	20–35	1 - 2
9. Winter barley	Cool	20–35	1 - 2
10. Winter rye	Cool	20–35	1 - 2
11. Triticale	Cool	25–40	1 - 2

^a Successful seeding of annual grass resulting in adequate plant growth will usually produce enough dead-plant residue to provide protection from wind and water erosion for an additional year. This assumes that the cover is not disturbed or mowed closer than 8 inches.

Hydraulic seeding may be substituted for drilling only where slopes are steeper than 3:1 or where access limitations exist. When hydraulic seeding is used, hydraulic mulching should be applied as a separate operation, when practical, to prevent the seeds from being encapsulated in the mulch.

^b See Table TS/PS-3 for seeding dates. Irrigation, if consistently applied, may extend the use of cool season species during the summer months.

^c Seeding rates should be doubled if seed is broadcast, or increased by 50 percent if done using a Brillion Drill or by hydraulic seeding.

MULCHING NOTES

INSTALLATION REQUIREMENTS

- ALL DISTURBED AREAS MUST BE MULCHED WITHIN 21 DAYS AFTER FINAL GRADE AND SEEDED AREAS ARE TO BE MULCHED WITHIN 24 HOURS AFTER SEEDING.
- MATERIAL USED FOR MULCH CAN BE CERTIFIED CLEAN, WEED- AND SEED-FREE LONG STEMMED FIELD OR MARSH HAY, OR STRAW OF OATS, BARLEY, WHEAT, RYE, OR TRITICALE CERTIFIED BY THE COLORADO DEPARTMENT OF AGRICULTURE WEED FREE FORAGE CERTIFICATION PROGRAM.
- HYDRAULIC MULCHING MATERIAL SHALL CONSIST OF VIRGIN WOOD FIBER MANUFACTURED FROM CLEAN WHOLE WOOD CHIPS. WOOD CHIPS CANNOT CONTAIN ANY GROWTH OR GERMINATION INHIBITORS OR BE PRODUCED FROM RECYCLED MATERIAL. GRAVEL CAN ALSO BE USED.
- MULCH IS TO BE APPLIED EVENLY AT A RATE OF 2 TONS PER ACRE.
- MULCH IS TO BE ANCHORED EITHER BY CRIMPING (TUCKING MULCH FIBERS 4 INCHES INTO THE SOIL), USING NETTING (USED ON SMALL AREAS WITH STEEP SLOPES), OR WITH A TACKIFIER.
- HYDRAULIC MULCHING AND TACKIFIERS ARE NOT TO BE USED IN THE PRESENCE OF FREE SURFACE WATER.

MAINTENANCE REQUIREMENTS

- REGULAR INSPECTIONS ARE TO BE MADE OF ALL MULCHED AREAS.
- MULCH IS TO BE REPLACED IMMEDIATELY IN THOSE AREAS IT HAS BEEN REMOVED, AND IF NECESSARY THE AREA SHOULD BE RESEDED.

Table TS/PS-2. Minimum Drill Seeding Rates for Perennial Grasses

Common* Name	Botanical Name	Growth Season ^b	Growth Form	Seeds/ Pound	Pounds of PLS/acre
Alkalali Soil Seed Mix					
Alkali sacaton	<i>Sporobolus airoides</i>	Cool	Bunch	1,750,000	0.25
Basin wildrye	<i>Elymus cinereus</i>	Cool	Bunch	165,000	2.5
Sodar streambank wheatgrass	<i>Agropyron riparium 'Sodar'</i>	Cool	Sod	170,000	2.5
Jose tall wheatgrass	<i>Agropyron elongatum 'Jose'</i>	Cool	Bunch	79,000	7.0
Arriba western wheatgrass	<i>Agropyron smithii 'Arriba'</i>	Cool	Sod	110,000	5.5
Total					17.75
Fertile Loamy Soil Seed Mix					
Ephriam crested wheatgrass	<i>Agropyron cristatum 'Ephriam'</i>	Cool	Sod	175,000	2.0
Dural hard fescue	<i>Festuca ovina 'duriuscula'</i>	Cool	Bunch	565,000	1.0
Lincoln smooth brome	<i>Bromus inermis leys 'Lincoln'</i>	Cool	Sod	130,000	3.0
Sodar streambank wheatgrass	<i>Agropyron riparium 'Sodar'</i>	Cool	Sod	170,000	2.5
Arriba western wheatgrass	<i>Agropyron smithii 'Arriba'</i>	Cool	Sod	110,000	7.0
Total					15.5
High Water Table Soil Seed Mix					
Meadow foxtail	<i>Alopecurus pratensis</i>	Cool	Sod	900,000	0.5
Redtop	<i>Agrostis alba</i>	Warm	Open sod	5,000,000	0.25
Reed canarygrass	<i>Phalaris arundinacea</i>	Cool	Sod	68,000	0.5
Lincoln smooth brome	<i>Bromus inermis leys 'Lincoln'</i>	Cool	Sod	130,000	3.0
Pathfinder switchgrass	<i>Panicum virgatum 'Pathfinder'</i>	Warm	Sod	389,000	1.0
Alkat tall wheatgrass	<i>Agropyron elongatum 'Alkat'</i>	Cool	Bunch	79,000	5.5
Total					10.75
Transition Turf Seed Mix^c					
Ruebens Canadian bluegrass	<i>Poa compressa 'Ruebens'</i>	Cool	Sod	2,500,000	0.5
Dural hard fescue	<i>Festuca ovina 'duriuscula'</i>	Cool	Bunch	565,000	1.0
Citation perennial ryegrass	<i>Lolium perenne 'Citation'</i>	Cool	Sod	247,000	3.0
Lincoln smooth brome	<i>Bromus inermis leys 'Lincoln'</i>	Cool	Sod	130,000	3.0
Total					7.5

Table TS/PS-2. Minimum Drill Seeding Rates for Perennial Grasses (cont.)

Common Name	Botanical Name	Growth Season ^b	Growth Form	Seeds/ Pound	Pounds of PLS/acre
Sandy Soil Seed Mix					
Blue grama	<i>Bouteloua gracilis</i>	Warm	Sod-forming bunchgrass	825,000	0.5
Camper little bluestem	<i>Schizachyrium scoparium 'Camper'</i>	Warm	Bunch	240,000	1.0
Prairie sandreed	<i>Calamovilfa longifolia</i>	Warm	Open sod	274,000	1.0
Sand dropseed	<i>Sporobolus cryptandrus</i>	Cool	Bunch	5,298,000	0.25
Vaughn sidecoats grama	<i>Bouteloua curtipendula 'Vaughn'</i>	Warm	Sod	191,000	2.0
Arriba western wheatgrass	<i>Agropyron smithii 'Arriba'</i>	Cool	Sod	110,000	5.5
Total					10.25
Heavy Clay, Rocky Foothill Seed Mix					
Ephriam crested wheatgrass ^d	<i>Agropyron cristatum 'Ephriam'</i>	Cool	Sod	175,000	1.5
Oahe Intermediate wheatgrass	<i>Agropyron intermedium 'Oahe'</i>	Cool	Sod	115,000	5.5
Vaughn sidecoats grama ^e	<i>Bouteloua curtipendula 'Vaughn'</i>	Warm	Sod	191,000	2.0
Lincoln smooth brome	<i>Bromus inermis leys 'Lincoln'</i>	Cool	Sod	130,000	3.0
Lincoln western wheatgrass	<i>Agropyron smithii 'Arriba'</i>	Cool	Sod	110,000	5.5
Total					17.5

^a All of the above seeding mixes and rates are based on drill seeding followed by crimped straw mulch. These rates should be doubled if seed is broadcast and should be increased by 50 percent if the seeding is done using a Brillion Drill or is applied through hydraulic seeding. Hydraulic seeding may be substituted for drilling only where slopes are steeper than 3:1. If hydraulic seeding is used, hydraulic mulching should be done as a separate operation.

^b See Table TS/PS-3 for seeding dates.

^c If site is to be irrigated, the transition turf seed rates should be doubled.

^d Crested wheatgrass should not be used on slopes steeper than 6H to 1V.

^e Can substitute 0.5 lbs PLS of blue grama for the 2.0 lbs PLS of Vaughn sidecoats grama.

Table TS/PS-3. Seeding Dates for Annual and Perennial Grasses

Seeding Dates	Annual Grasses (Numbers in table reference species in Table TS/PS-1)		Perennial Grasses	
	Warm	Cool	Warm	Cool
January 1–March 15			✓	✓
March 16–April 30	4	1,2,3	✓	✓
May 1–May 15	4		✓	
May 16–June 30	4,5,6,7			
July 1–July 15	5,6,7			
July 16–August 31				
September 1–September 30		8,9,10,11		
October 1–December 31			✓	✓

Mulch

Cover seeded areas with mulch or an appropriate rolled erosion control product to promote establishment of vegetation. Anchor mulch by crimping, netting or use of a non-toxic tackifier. See the Mulching BMP Fact Sheet for additional guidance.

Maintenance and Removal

Monitor and observe seeded areas to identify areas of poor growth or areas that fail to germinate. Reseed and mulch these areas, as needed.

An area that has been permanently seeded should have a good stand of vegetation within one growing season if irrigated and within three growing seasons without irrigation in Colorado. Reseed portions of the site that fail to germinate or remain bare after the first growing season.

Seeded areas may require irrigation, particularly during extended dry periods. Targeted weed control may also be necessary.

Protect seeded areas from construction equipment and vehicle access.

48 hours before you dig, CALL UTILITY NOTIFICATION CENTER OF COLORADO (UNCO)

811

Gas, Electric, Telephone, CATV, and
Fehonhale Eastern Pipeline Locations

SCALE VERIFICATION
BAR IS ONE INCH ON ORIGINAL DRAWING
IF NOT ONE INCH ON THIS SHEET
SCALE ACCORDINGLY

REVISEIONS

DESCRIPTION

NO.

DATE

BY

SCENIC VIEW AT PAINT BRUSH HILLS
DETENTION POND MODIFICATIONS

EC DETAILS

PAINT BRUSH HILLS METROPOLITAN DISTRICT
EL PASO COUNTY, COLORADO

DRAWN BY:
JCS

DESIGNED BY:
GEW

JOB NUMBER:
1070.0022

DATE:
8/23/22

SCALE:
N.T.S.

DRAWING NAME:
EC DETAILS

SHEET NO:
8 of 8



R G AND ASSOCIATES, LLC
4885 Ward Road, Suite 100 • Wheat Ridge, CO 80033
Del Norte • Gypsum • Wheat Ridge
303-293-8107 • www.rgengineers.com

