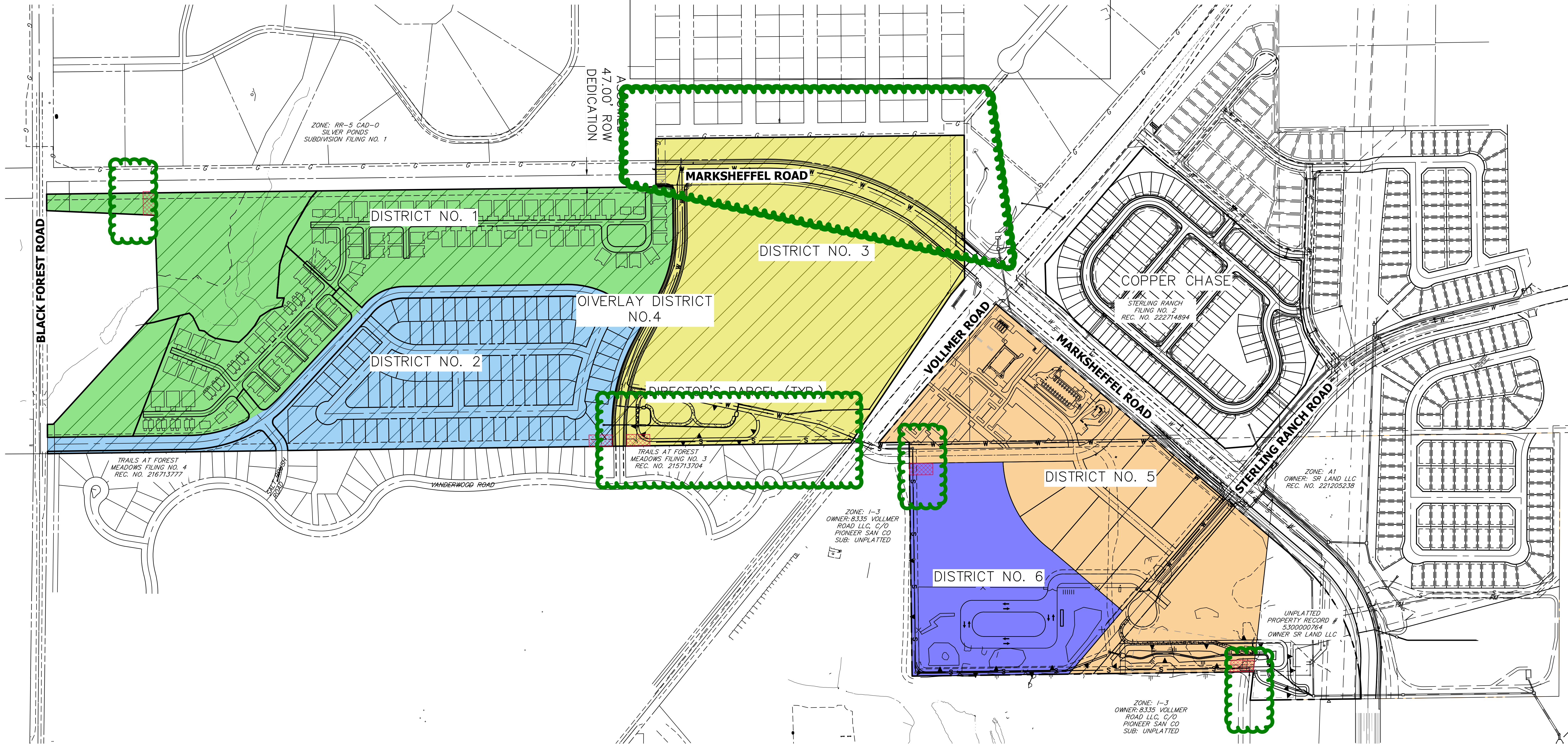


# STONEBRIDGE METROPOLITAN DISTRICT NOS. 1-6 DISTRICT BOUNDARIES

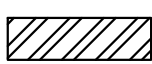
Should this be included in D2 or D1; Marksheffel will be built by developer and remnant piece north of Marksheffel is not sold to apartments, but retained by Developer; should the multifamily be in one district? .

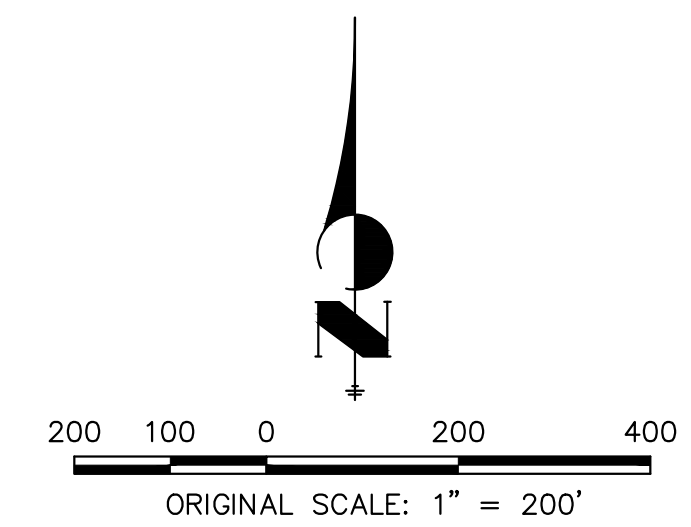
There is a detention tract at bottom of D3 that will be constructed by developer w D1 and D2 development; should this be in another district?

The BOCC has frowned upon the developer retaining control after development is built out- you are Proposing Director parcels which are not a part of model service plans....address rational and purpose in Letter of intent (LOI)



## LEGEND

OVERLAY DISTRICT NO. 4 

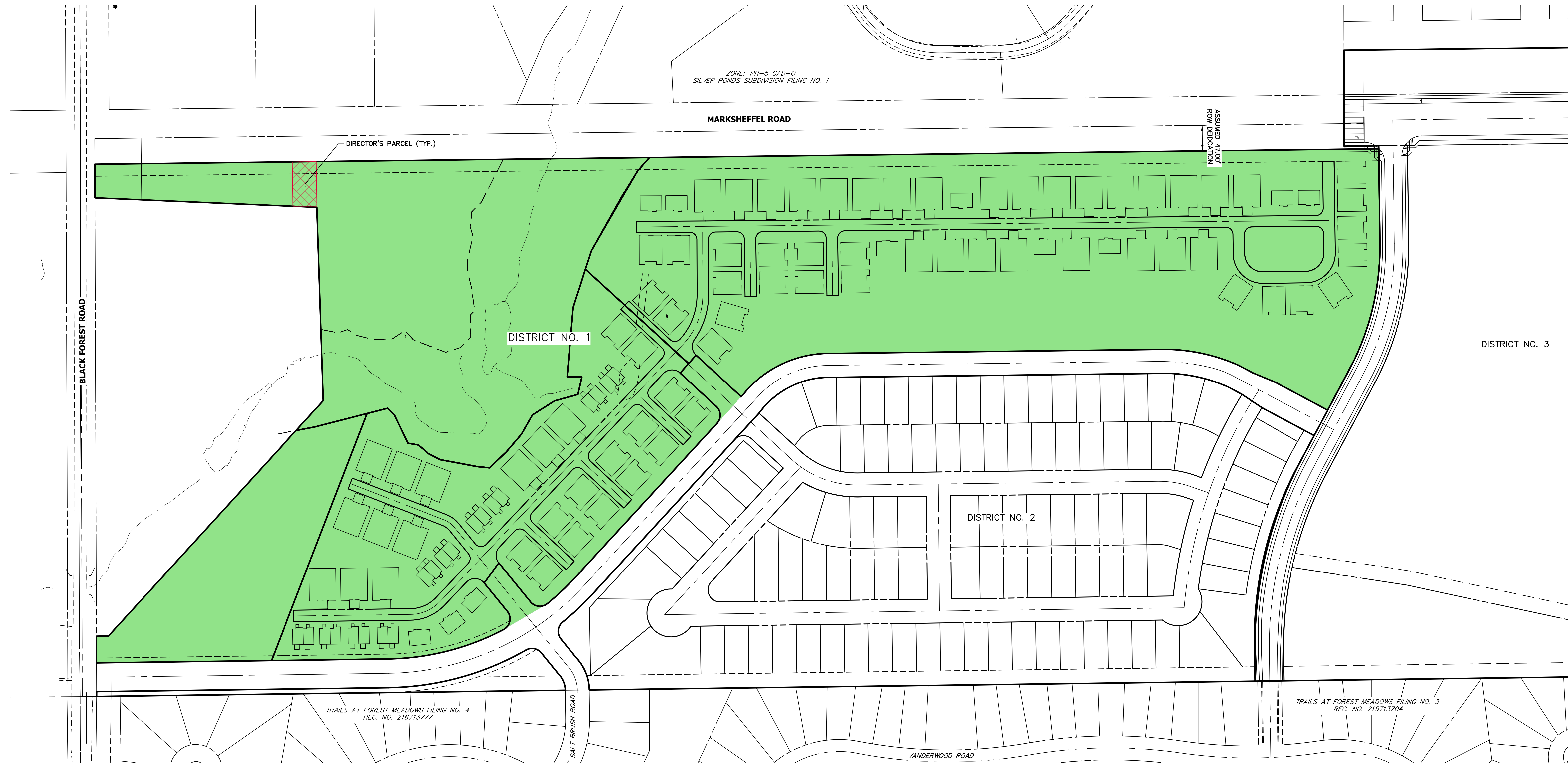


STONEBRIDGE METROPOLITAN DISTRICT  
NOS. 1-6 DISTRICT BOUNDARIES  
2024-3-8  
SHEET 1 OF 1

 **J-R ENGINEERING**  
A Westrian Company

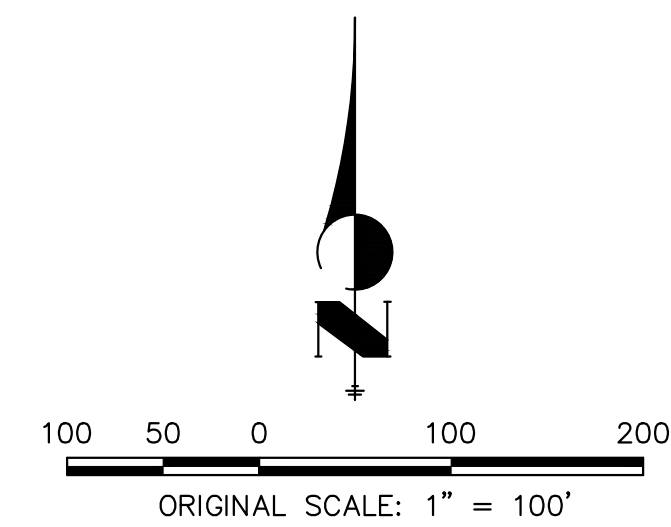
Centennial 303-740-9393 • Colorado Springs 719-593-2593  
Fort Collins 970-491-9888 • [www.jrengineering.com](http://www.jrengineering.com)

# STONEBRIDGE METROPOLITAN DISTRICT NO. 1 BOUNDARY MAP



## LEGEND

DISTRICT NO. 1



STONEBRIDGE METROPOLITAN  
DISTRICT NO. 1 BOUNDARY MAP  
2024-3-8  
SHEET 1 OF 1



Centennial 303-740-9393 • Colorado Springs 719-593-2593  
Fort Collins 970-491-9888 • [www.jrengineering.com](http://www.jrengineering.com)

# STONEBRIDGE METROPOLITAN DISTRICT NO. 2 BOUNDARY MAP

ZONE: RR-5 CAD-0  
SILVER PONDS SUBDIVISION FILING NO. 1

MARKSHEFFEL ROAD

BLACK FOREST ROAD

DISTRICT NO. 1

DISTRICT NO. 3

DISTRICT NO. 2

DIRECTOR'S PARCEL (TYP.)

TRAILS AT FOREST MEADOWS FILING NO. 4  
REC. NO. 216713777

SALT BRUSH ROAD

TRAILS AT FOREST MEADOWS FILING NO. 3  
REC. NO. 215713704

VANDERWOOD ROAD

## LEGEND

DISTRICT NO. 2



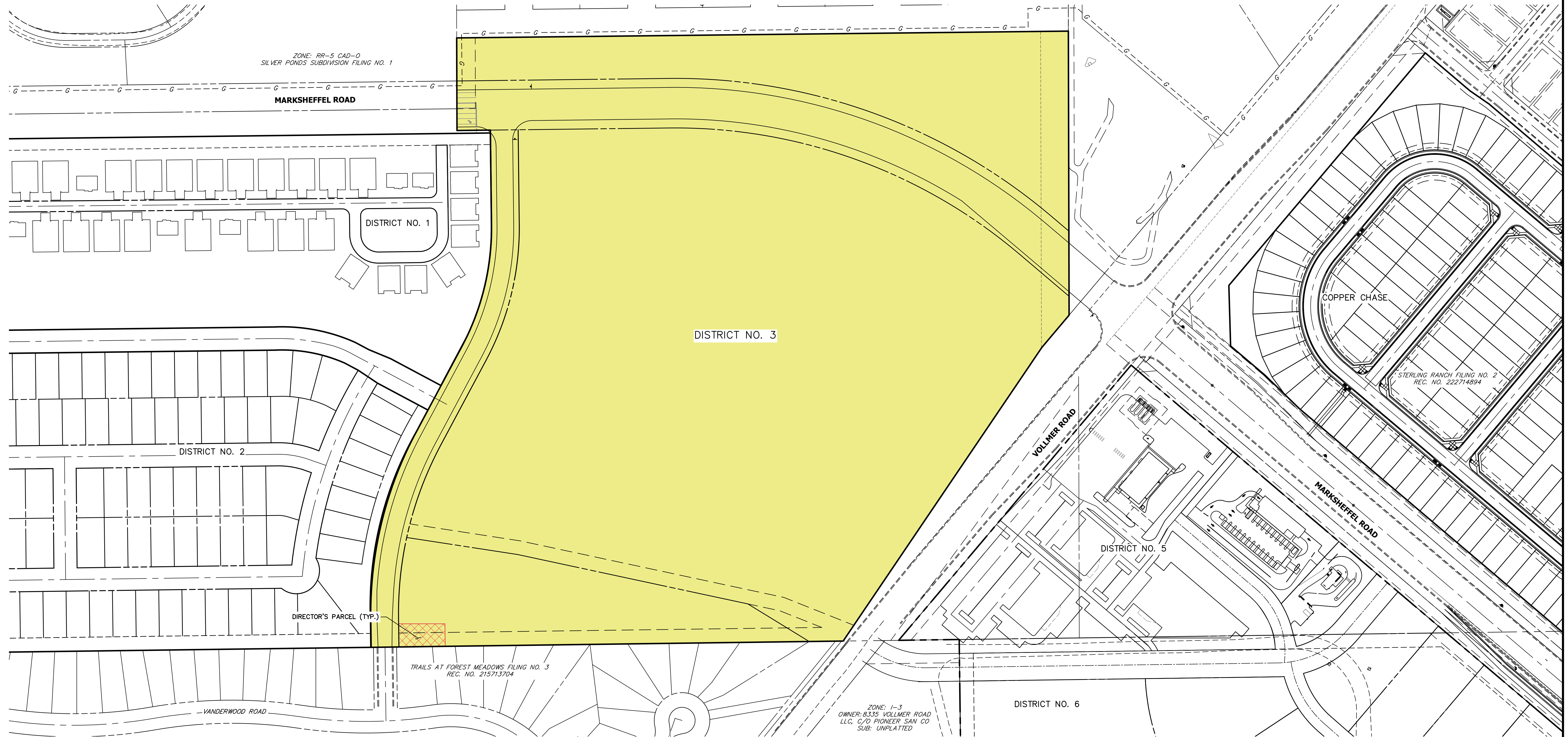
100 50 0 100 200  
ORIGINAL SCALE: 1" = 100'

STONEBRIDGE METROPOLITAN  
DISTRICT NO. 2 BOUNDARY MAP  
2024-3-8  
SHEET 1 OF 1

 **J-R ENGINEERING**  
A Westrian Company

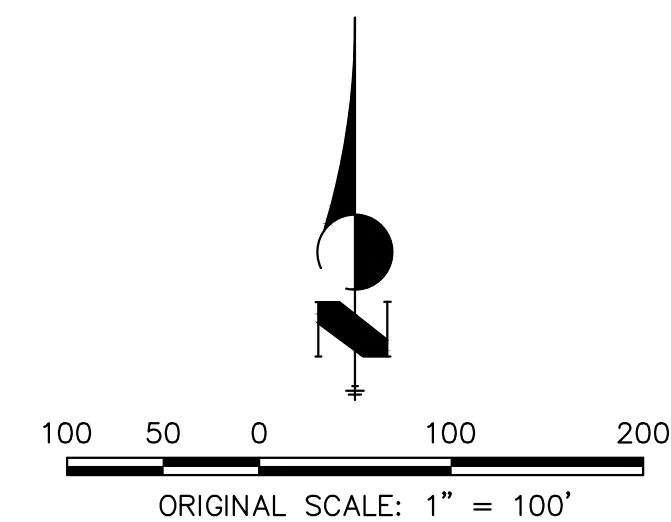
Centennial 303-740-9393 • Colorado Springs 719-593-2593  
Fort Collins 970-491-9888 • www.jrengineering.com

# STONEBRIDGE METROPOLITAN DISTRICT NO. 3 BOUNDARY MAP



## LEGEND

DISTRICT NO. 3

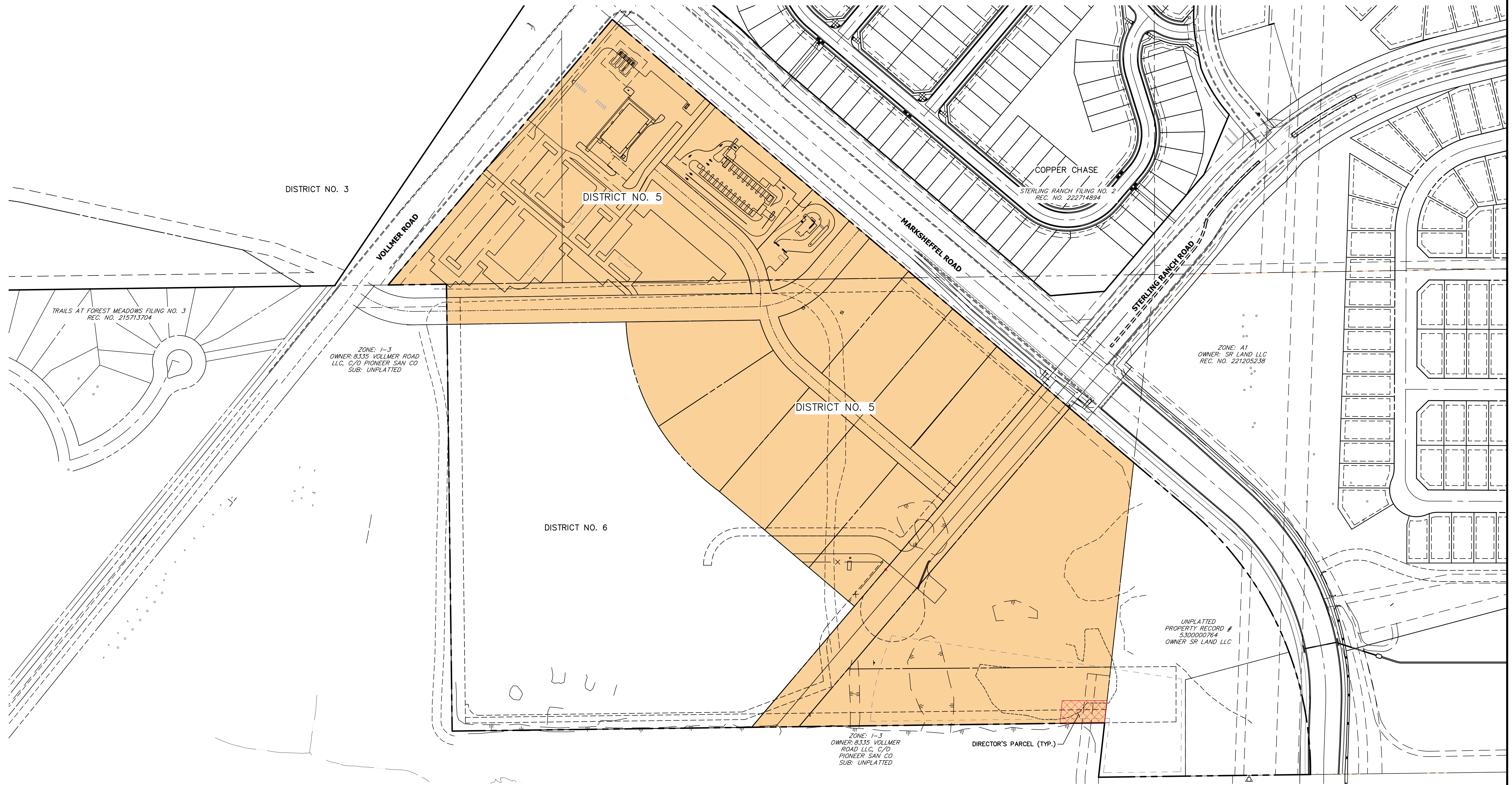


STONEBRIDGE METROPOLITAN  
DISTRICT NO. 3 BOUNDARY MAP  
2024-3-8  
SHEET 1 OF 1

**J-R ENGINEERING**  
A Westrian Company

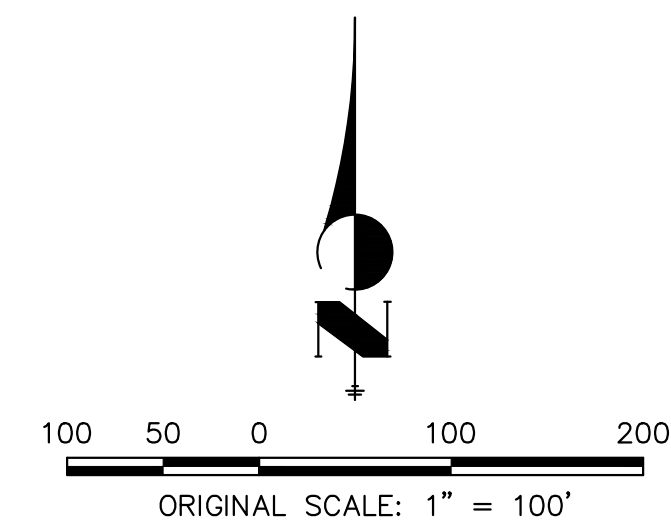
Centennial 303-740-9393 • Colorado Springs 719-593-2593  
Fort Collins 970-491-9888 • [www.jrengineering.com](http://www.jrengineering.com)

# STONEBRIDGE METROPOLITAN DISTRICT NO. 5 BOUNDARY MAP



**LEGEND**

DISTRICT NO. 5

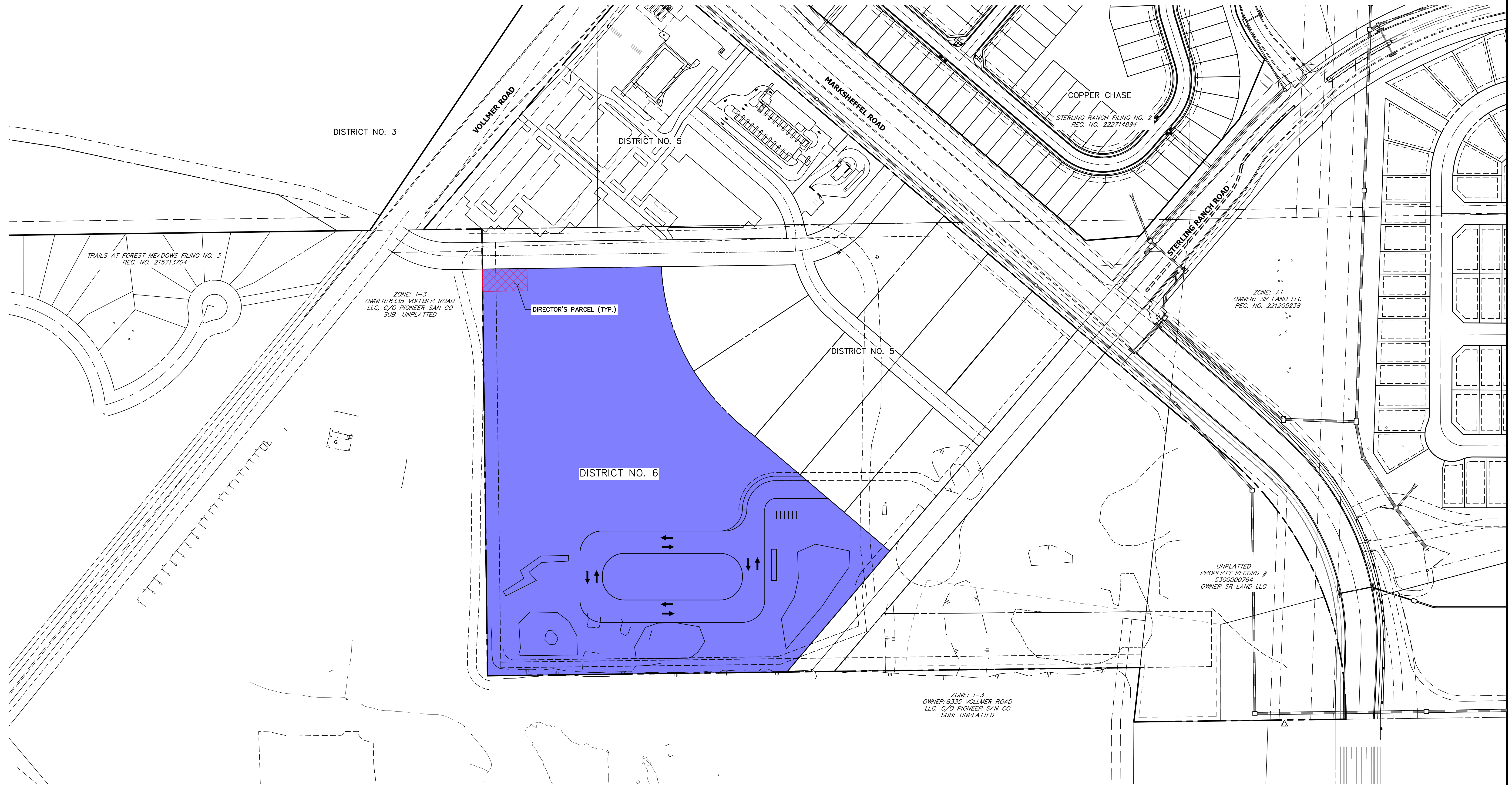


STONEBRIDGE METROPOLITAN  
DISTRICT NO. 5 BOUNDARY MAP  
2024-3-8  
SHEET 1 OF 1



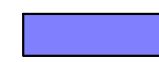
Centennial 303-740-9393 • Colorado Springs 719-593-2593  
Fort Collins 970-491-9888 • [www.jrengineering.com](http://www.jrengineering.com)

# STONEBRIDGE METROPOLITAN DISTRICT NO. 6 BOUNDARY MAP



## LEGEND

DISTRICT NO. 6



100 50 0 100 200  
ORIGINAL SCALE: 1" = 100'

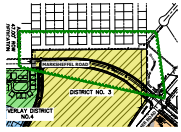
STONEBRIDGE METROPOLITAN  
DISTRICT NO. 6 BOUNDARY MAP  
2024-3-8  
SHEET 1 OF 1

 **J-R ENGINEERING**  
A Westrian Company

Centennial 303-740-9393 • Colorado Springs 719-593-2593  
Fort Collins 970-491-9888 • [www.jrengineering.com](http://www.jrengineering.com)

# V\_1 District Boundary Map comments review 1.pdf Markup Summary

dspdparsons (6)



**Subject:** Cloud  
**Page Label:** [1] 24x36 Title Landscape  
**Author:** dsdparsons  
**Date:** 4/9/2024 1:39:27 PM  
**Status:**  
**Color:** ■  
**Layer:**  
**Space:**

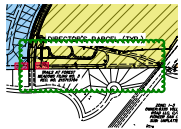


**Subject:** Text Box  
**Page Label:** [1] 24x36 Title Landscape  
**Author:** dsdparsons  
**Date:** 4/10/2024 11:36:43 AM  
**Status:**  
**Color:** ■  
**Layer:**  
**Space:**

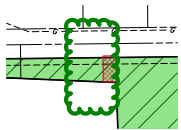
Should this be included in D2 or D1; Marksheffel will be built by developer and remnant piece north of Marksheffel is not sold to apartments, but retained by Developer; should the multifamily be in one district? .

There is a detention tract at bottom of D3 that will be constructed by developer w D1 and D2 development; should this be in another district?

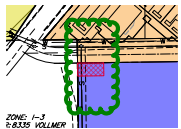
The BOCC has frowned upon the developer retaining control after development is built out- you are Proposing Director parcels which are not a part of model service plans....address rational and purpose in Letter of intent (LOI)



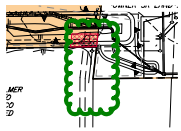
**Subject:** Cloud  
**Page Label:** [1] 24x36 Title Landscape  
**Author:** dsdparsons  
**Date:** 4/9/2024 11:42:08 AM  
**Status:**  
**Color:** ■  
**Layer:**  
**Space:**



**Subject:** Cloud  
**Page Label:** [1] 24x36 Title Landscape  
**Author:** dsdparsons  
**Date:** 4/9/2024 11:44:38 AM  
**Status:**  
**Color:** ■  
**Layer:**  
**Space:**



**Subject:** Cloud  
**Page Label:** [1] 24x36 Title Landscape  
**Author:** dsdparsons  
**Date:** 4/9/2024 11:44:52 AM  
**Status:**  
**Color:** ■  
**Layer:**  
**Space:**



---

**Subject:** Cloud

**Page Label:** [1] 24x36 Title Landscape

**Author:** dsdparsons

**Date:** 4/9/2024 11:44:59 AM

**Status:**

**Color:** ■

**Layer:**

**Space:**