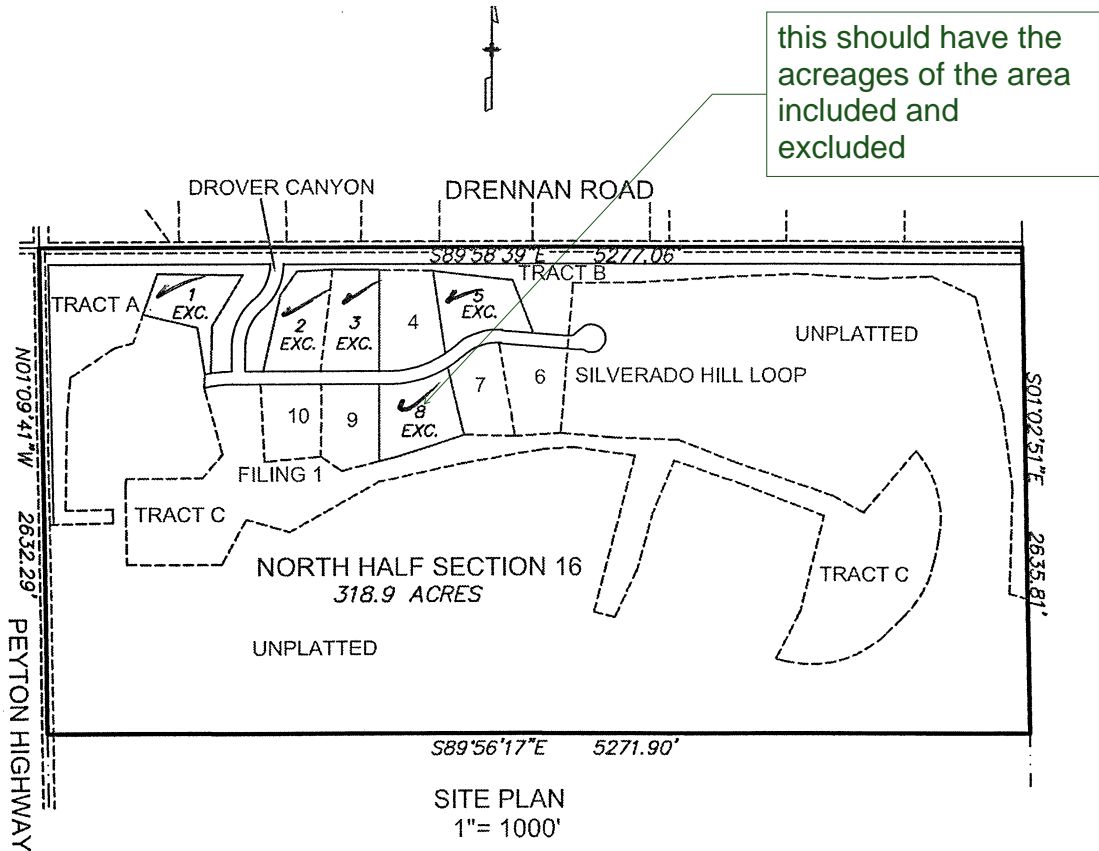


## DISTRICT BOUNDARY MAP EXCLUDING LOTS 1, 2, 3, 5, AND 8



THE NORTH HALF OF SECTION 16, T15S, R63W  
OF THE 6th P.M., EL PASO COUNTY, COLORADO,  
EXCEPTING THEREFROM LOTS 1, 2, 3, 5 AND 8,  
SILVERADO RANCH FILING NO. 1, AS SHOWN ON  
THE SUBDIVISION PLAT THEREOF RECORDED  
AT RECEPTION NO. 218714252 OF THE EL PASO  
COUNTY RECORDS.

DISTRICT BOUNDARY  
SILVERADO RANCH  
METRO DISTRICT  
N1/2 SEC. 16, T15S, R63W 6th P.M.

DWG: SILVERADO  
SCALE: 1"=1000  
DATE: 8/6/21  
DRAWN: KMO  
CHECKED: THK  
PROJECT: 16093

LWA LAND SURVEYING, INC.  
953 E. FILLMORE STREET  
COLORADO SPRINGS, CO 80907  
TELEPHONE (719) 636-5179 FAX (719) 636-5199

REVISIONS: