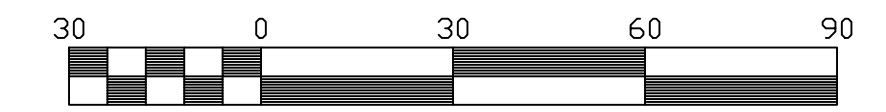
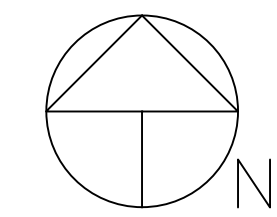
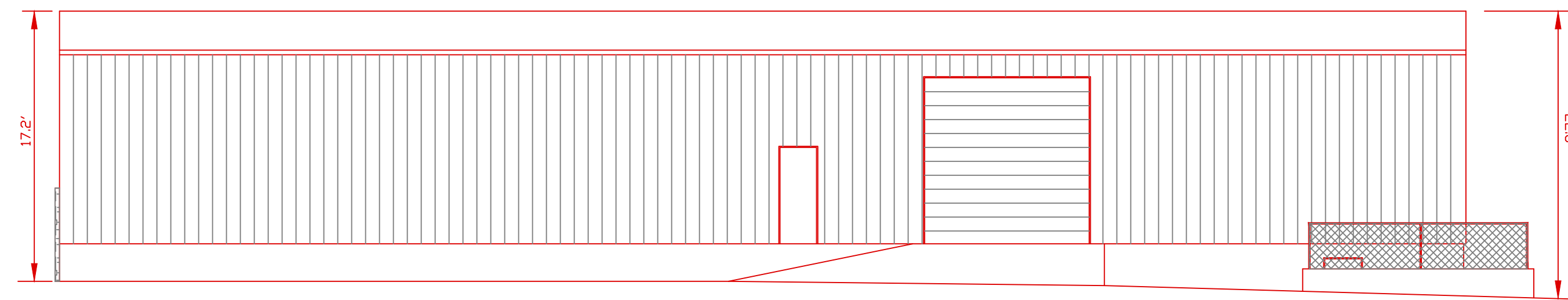


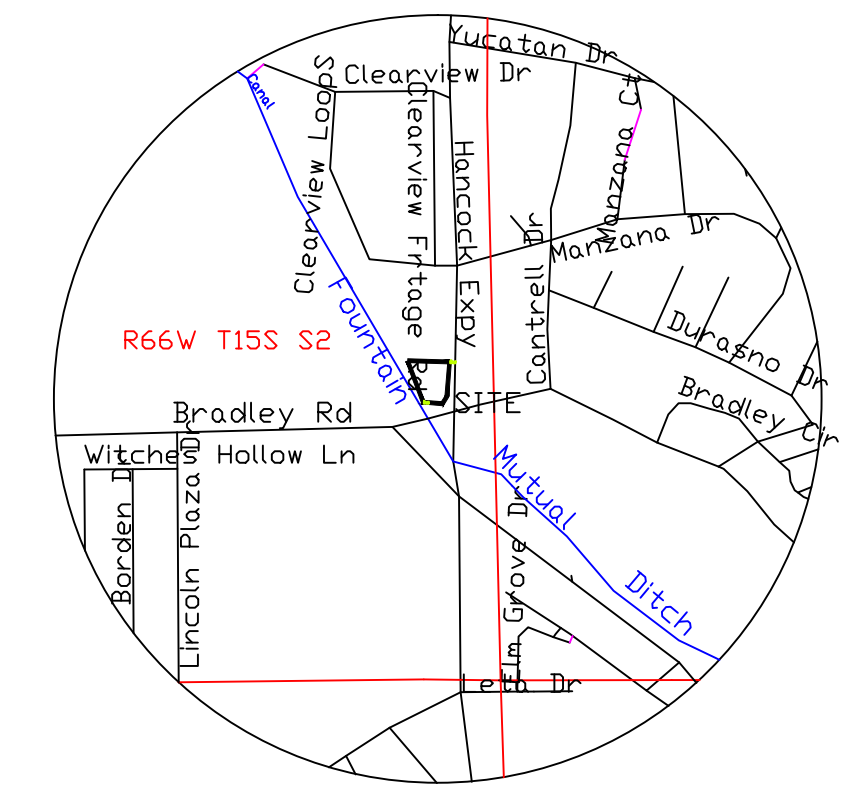
**EAST ELEVATION**  
1/8"=1'-0"



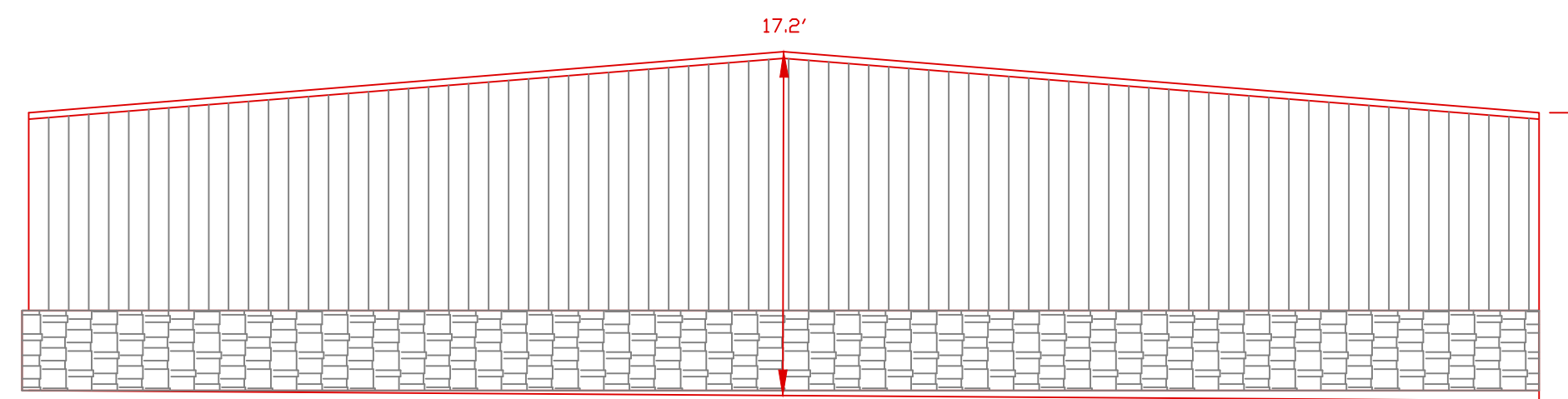
Scale 1" = 30'



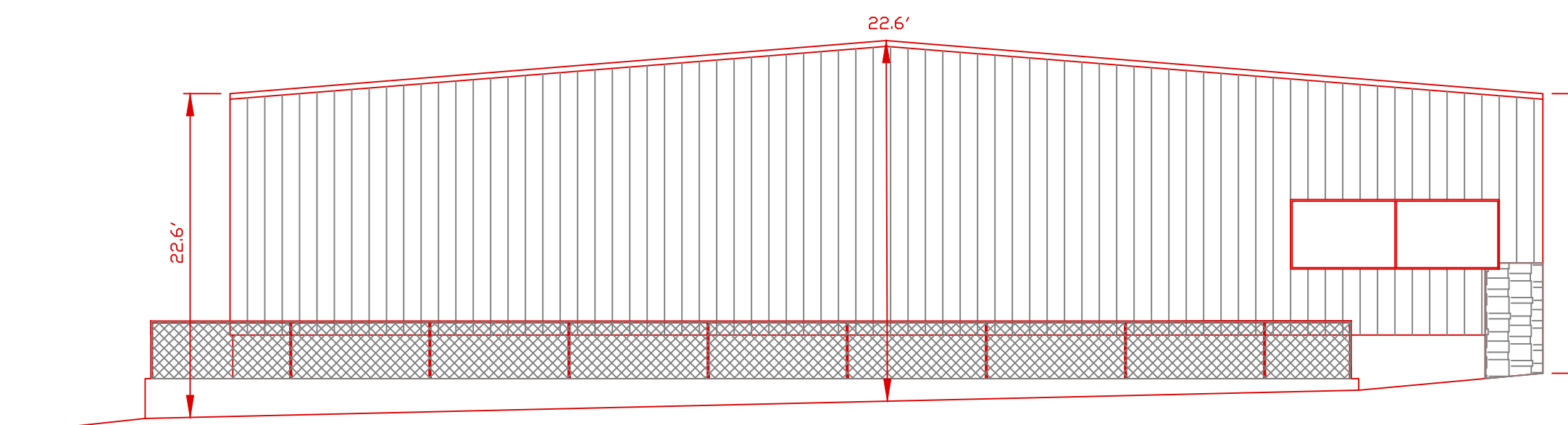
**WEST ELEVATION**  
1/8"=1'-0"



**VICINITY MAP**  
1"=1000'



**NORTH ELEVATIONS**  
1/8"=1'-0"



**SOUTH ELEVATION**  
1/8"=1'-0"

File No:

Prepared by the office of:  
Oliver E. Watts, Consulting Engineer, Inc.  
614 Elkton Drive  
Colorado Springs, CO 80907  
(719) 593-0173  
Ollewwatts@aol.com  
Celebrating 41 years in Business

DRAWN BY: D.E. WATTS DATE: 1-6-21 DWG. NO.: 20-5570-01 SURVEYED BY: DEW, ESW, 6-26-01, 7-27-01, 8-27-14	APPROVED BY: PROJ. NO.: DWG.	REVISIONS	OLIVER E. WATTS CONSULTING ENGINEER COLORADO SPRINGS	PROJECT 4250 HANCOCK ESPRESSWAY L5, BA, RESUB. L'S 4&5 CLEARVIEW IND. PK. F#1 EL PASO COUNTY, COLORADO	SHEET NAME <b>BUILDING ELEVATIONS</b>	SHEET NO. 2 OF 2
--	------------------------------------	-----------	--	---	--	---------------------------