

McDONALD'S RESTAURANT SITE DEVELOPMENT PLAN

MERIDIAN CROSSING FILING NO.1

A SUBDIVISION OF A PORTION OF THE NE 1/4 OF SEC. 12, T-13-S, R-65-W OF THE 6th P.M.,
AND A REPLAT OF A PORTION OF THE TOWN OF FALCON
EL PASO COUNTY, COLORADO.

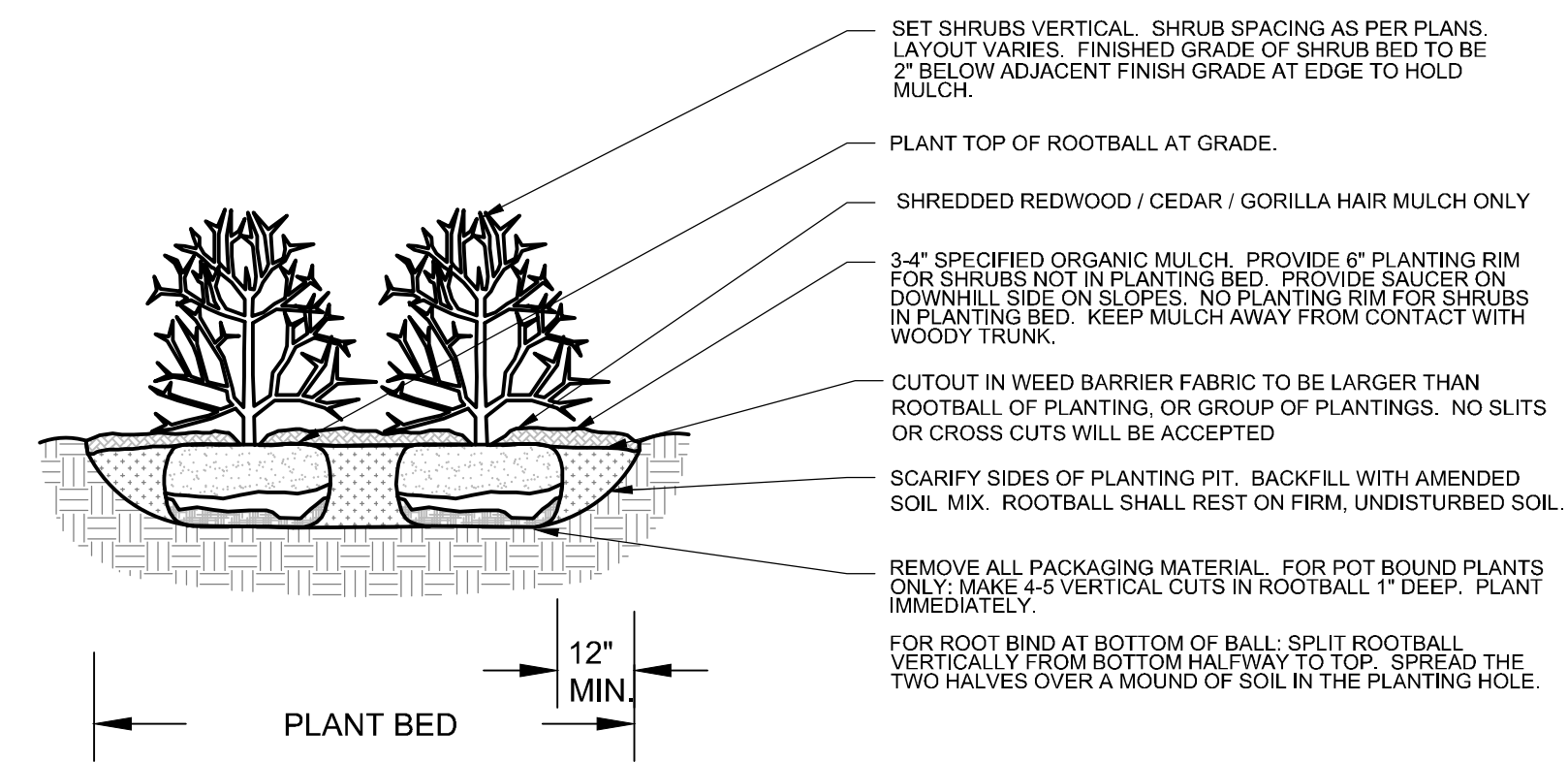
Include table summarizing landscaping required/provided, code requirements for parking lot landscaping, etc. demonstrating that the proposal still complies with Section 6 landscaping requirements.

the information has been added

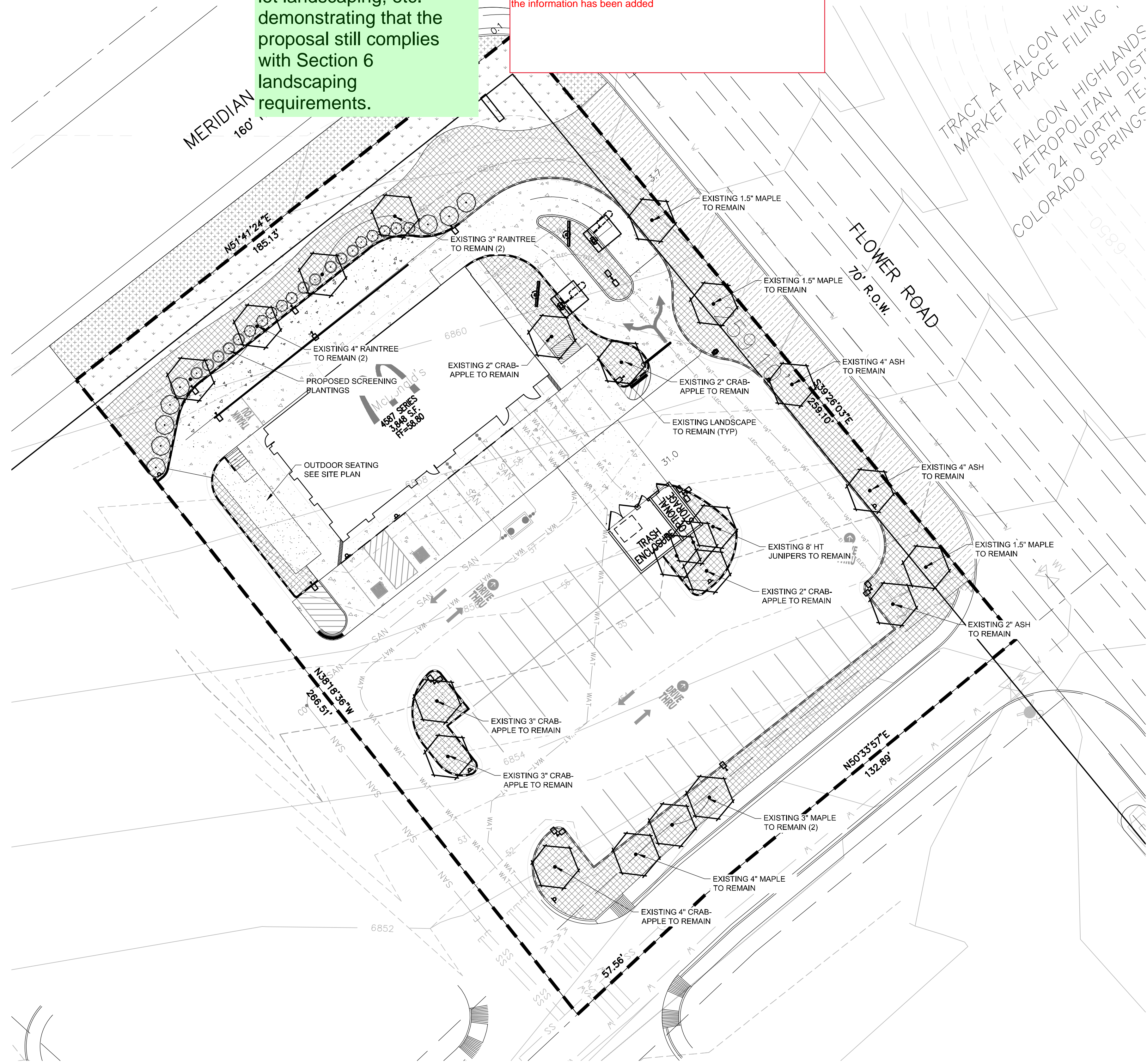
PLANT SCHEDULE

TREES	CODE	QTY	BOTANICAL / COMMON NAME	CONT
	EX-RET	22	TO REMAIN- PROTECT DURING CONSTRUCTION / EXISTING TREE TO REMAIN	EX
SHRUBS	CODE	QTY	BOTANICAL / COMMON NAME	SIZE
	AC	8	ARCTOSTAPHYLOS X COLORADOENSIS 'CHIEFTAIN' / MANZANITA	5 GAL
	CIT	10	CERCOCARPUS INTRICATUS / LITTLE LEAF MOUNTAIN MAHOGONY	5 GAL
GRASSES	CODE	QTY	BOTANICAL / COMMON NAME	SIZE
	SW	10	SPOROBOLUS WRIGHTII / BIG SACATON	1 GAL
GROUND COVERS	CODE	QTY	BOTANICAL / COMMON NAME	CONT
	EX-RS	9,765 SF	EX LANDSCAPE - SHRUB BED / TO REMAIN ADJUST FOR NEW LAYOUT. REPLACE ANY DEAD/DAMAGED MATERIALS AND PROTECT DURING CONSTRUCTION.	EX
	EX-RE	2,631 SF	EX TURF TO REMAIN / OFF-SITE. EXISTING TURF PROTECT IN PLACE. REPAIR/REPLACE ANY DAMAGED MATERIALS. TURF ON SEPARATE. EXISTING IRRIGATION SYSTEM FOR OVERALL DEVELOPMENT. ADJUST FOR NEW LAYOUT.	EX
	EX-RES	2,829 SF	EX TURF TO REMAIN / ON-SITE. EXISTING TURF PROTECT IN PLACE. REPAIR/REPLACE ANY DAMAGED MATERIALS. TURF ON SEPARATE. EXISTING IRRIGATION SYSTEM FOR OVERALL DEVELOPMENT. ADJUST FOR NEW LAYOUT.	EX
	LGS	2,435 SF	EXISTING LANDSCAPE - SHRUB BED / OFF-SITE SHRUB BED PROTECT IN PLACE. REPLACE ANY DAMAGED PLANT MATERIAL	SEED

ANY EXISTING TREES TO REMAIN THAT EXPERIENCE MORTALITY DUE TO CONSTRUCTION SHALL BE REPLACED WITH SIMILAR SIZE AND SPECIES



L1.0 SHRUB PLANTING DETAIL
NOT TO SCALE SECTION



LANDSCAPE PLAN
SCALE: 1" = 20'



NO.		DATE		REVISION DESCRIPTION	
CHIL ENGINEERING CONSULTANTS					
THESE PLANS AND SPECIFICATIONS ARE THE PROPERTY OF MCDONALD'S CORPORATION AND SHALL NOT BE REPRODUCED WITHOUT THEIR WRITTEN PERMISSION.					
OFFICE		ADDRESS		REGION	
DENVER REGION		4643 S. ULSTER ST., SUITE 1300, DENVER, COLORADO 80237			
PLAN APPROVALS		SIGNATURE (2 REQUIRED)		DATE	
AREA CONSTRUCTION MGR					
AREA REAL ESTATE MGR					
REAL ESTATE MGR					
DEVELOPMENT MANAGER					
CONSTRUCTION MANAGER					
OPERATIONS DIRECTOR					
SCALE:	1" = 20'	MCD RE:	BOWEN		
DATE:	05/08/2021	MCD P/CHK:	PEDIGO		
DESIGNED BY:	JRO				
DRAWN BY:	JRO	FILE NAME:	PLANNING.DWG		
CHECKED BY:	NAM	ARCE. IN:	20-0001-156		
DRAWING TITLE:					
FINAL LANDSCAPE PLAN					
SHEET NO:					
L1.0					

NDS
NATURAL DESIGN SOLUTIONS
Landscape Architecture
Land Planning · Irrigation Design
5539 Colt Drive, Longmont, CO 80503
(303) 443-0388 · nrd@ndscolorado.com

C:\ARCE\PROJECTS\F106-10002-MCDONALD'S 87-6050PARKWAY (COMMERCE COUNTY) [Dwg] (CSP-1.dwg) 12/12/2006 8:45:28 PM MST