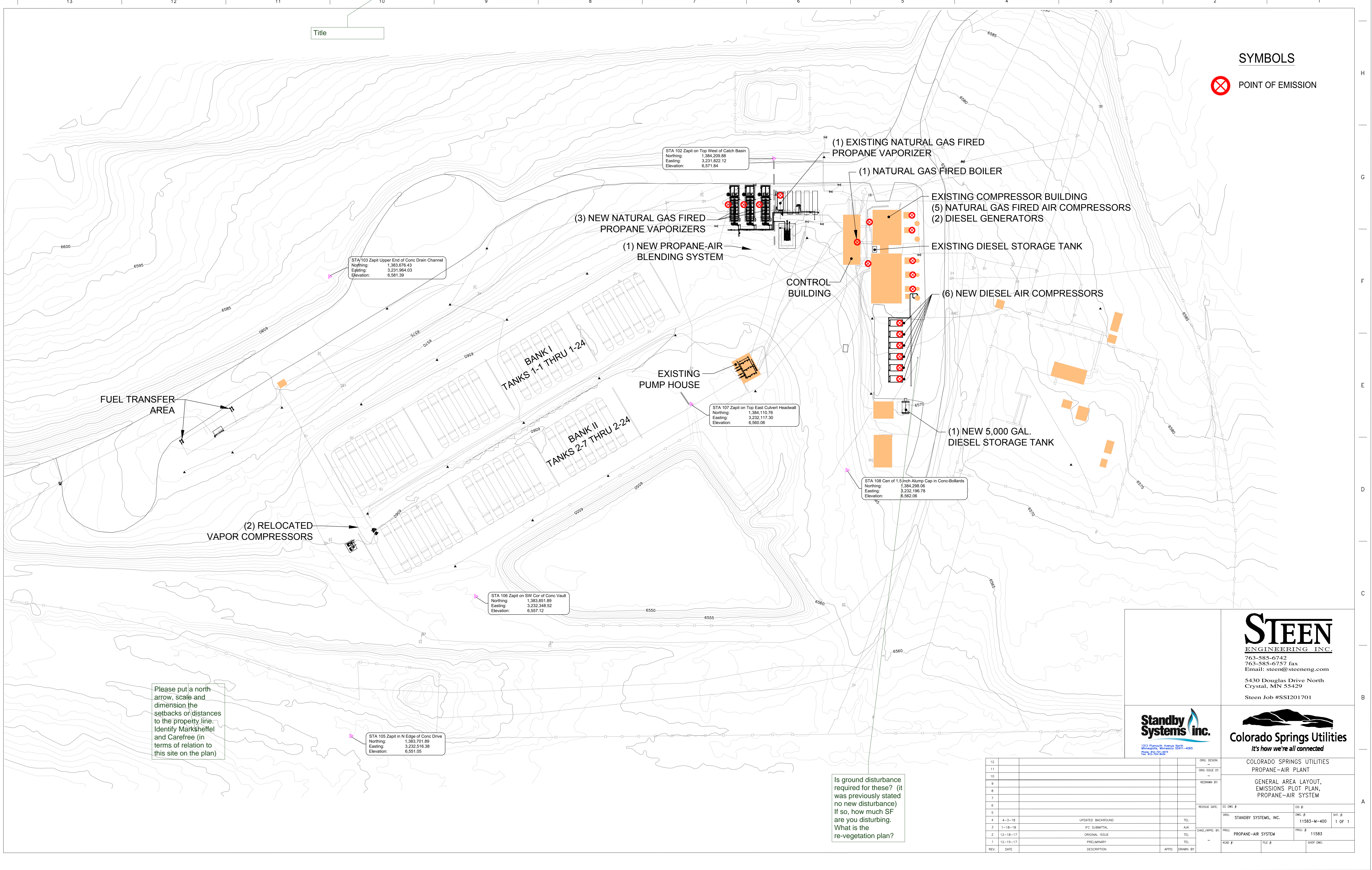


Title

**SYMBOLS**

 POINT OF EMISSION



STA 102 Zapit on Top West of Catch Basin  
Northing: 1,384,209.88  
Easting: 3,231,922.12  
Elevation: 6,571.84

STA 103 Zapit Upper End of Conc Drain Channel  
Northing: 1,383,676.43  
Easting: 3,231,964.03  
Elevation: 6,581.39

STA 107 Zapit on Top East Culvert Headwall  
Northing: 1,384,110.76  
Easting: 3,232,117.30  
Elevation: 6,560.06

STA 108 Cen of 1.5 inch Alum Cap in Conc-Bollards  
Northing: 1,384,288.06  
Easting: 3,232,196.78  
Elevation: 6,562.06

STA 106 Zapit on SW Cor of Conc Vault  
Northing: 1,383,851.89  
Easting: 3,232,348.52  
Elevation: 6,557.12

STA 105 Zapit in N Edge of Conc Drive  
Northing: 1,383,701.89  
Easting: 3,232,516.38  
Elevation: 6,551.05

Please put a north arrow, scale and dimension the setbacks or distances to the property line. Identify Marksheffel and Carefree (in terms of relation to this site on the plan)

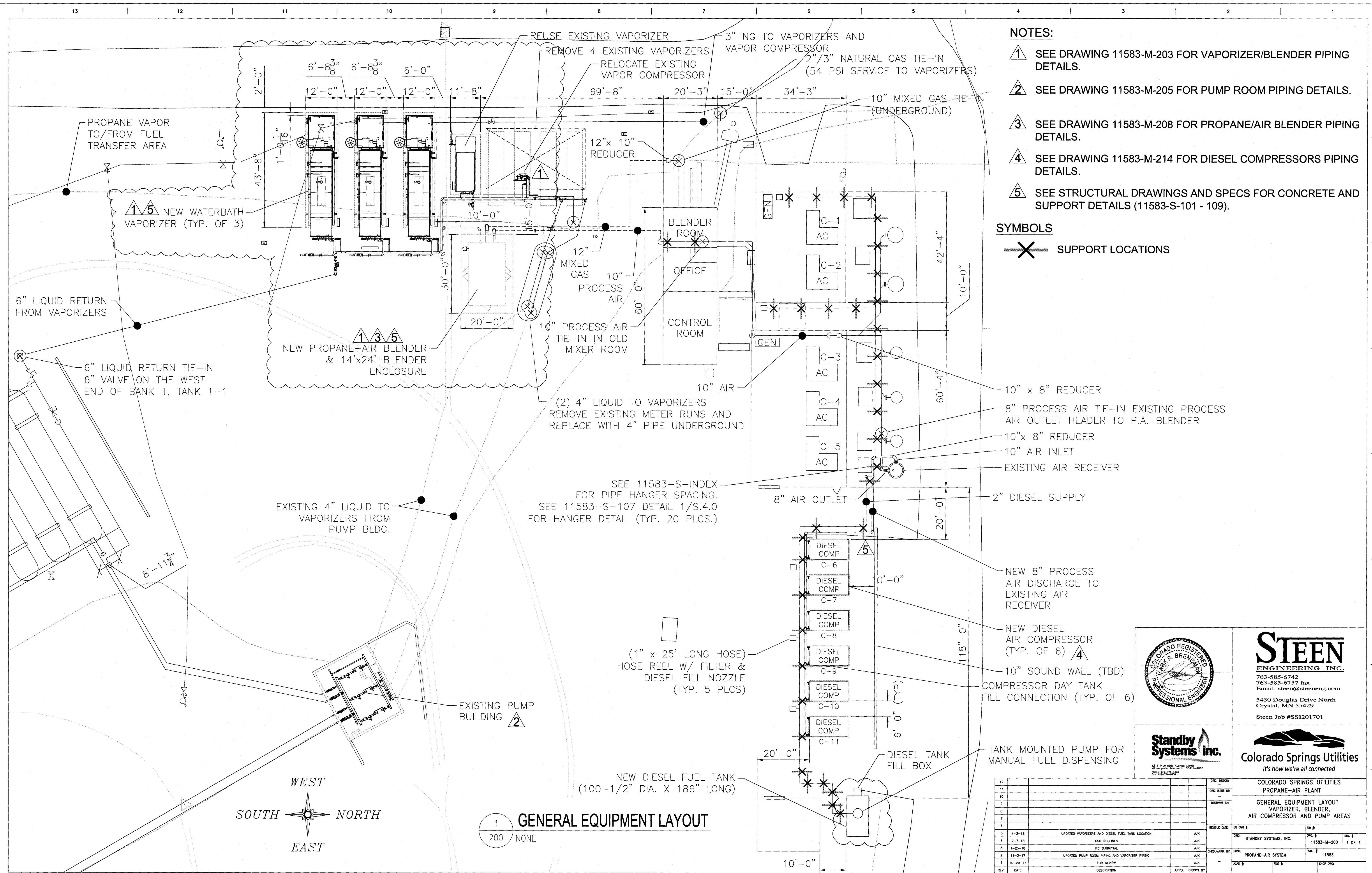
Is ground disturbance required for these? (it was previously stated no new disturbance) If so, how much SF are you disturbing. What is the re-vegetation plan?

**STEEN ENGINEERING INC.**  
763-585-6742  
763-585-6757 fax  
Email: steen@steeneng.com  
5430 Douglas Drive North  
Crystal, MN 55429  
Steen Job #SSI201701

**Standby Systems inc.**  
1313 Plymouth Avenue North  
Minneapolis, Minnesota 55411-4065  
Phone: 612-521-4070  
Fax: 612-521-4651

**Colorado Springs Utilities**  
It's how we're all connected

12									ORC DESIGN:			
11									ORC ISSUE DT:			
10									REDESIGN BY:			
9									ISSUE DATE:	ES DWG #:	ED #:	
8									ORC:	STANDBY SYSTEMS, INC.	DWG #:	SHT #:
7									DWG/APPD BY:	PROG:	11583-M-400	1 OF 1
6										PROJ:	PROPANE-AIR SYSTEM	PROJ #:
5									ACAD #:	FILE #:		SHOP DWG:
4	4-3-18	UPDATED BACKGROUND	TEL:									
3	1-18-18	IFC SUBMITTAL	ALK:									
2	12-18-17	ORIGINAL ISSUE	TEL:									
1	12-15-17	PRELIMINARY	TEL:									
REV.	DATE	DESCRIPTION	APPD.	DRAWN BY								



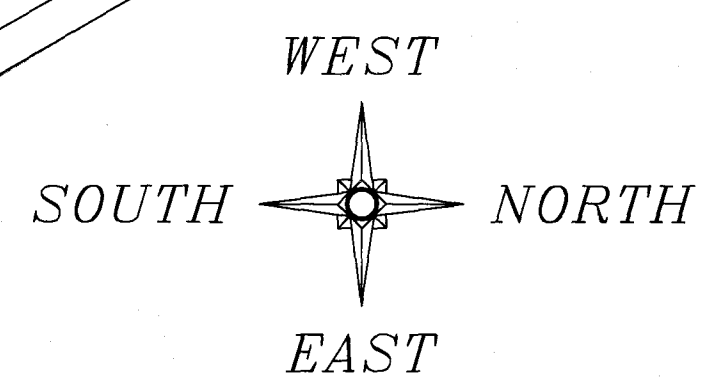
**NOTES:**

- 1 SEE DRAWING 11583-M-203 FOR VAPORIZER/BLENDER PIPING DETAILS.
- 2 SEE DRAWING 11583-M-205 FOR PUMP ROOM PIPING DETAILS.
- 3 SEE DRAWING 11583-M-208 FOR PROPANE/AIR BLENDER PIPING DETAILS.
- 4 SEE DRAWING 11583-M-214 FOR DIESEL COMPRESSORS PIPING DETAILS.
- 5 SEE STRUCTURAL DRAWINGS AND SPECS FOR CONCRETE AND SUPPORT DETAILS (11583-S-101 - 109).

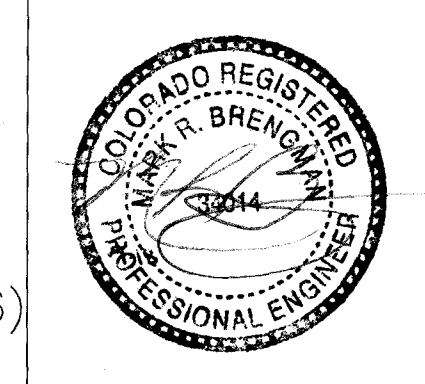
**SYMBOLS**

✕ SUPPORT LOCATIONS

1 GENERAL EQUIPMENT LAYOUT  
200 NONE



12									
11									
10									
9									
8									
7									
6									
5	4-3-18	UPDATED VAPORIZERS AND DIESEL FUEL TANK LOCATION	ALK						
4	2-7-18	CSU REVISIONS	ALK						
3	1-25-18	IPC SUBMITTAL	ALK						
2	11-5-17	UPDATED PUMP ROOM PIPING AND VAPORIZER PIPING	ALK						
1	10-20-17	FOR REVIEW	ALK						
REV.	DATE	DESCRIPTION	APPRO.	DRAWN BY					



**STEEN**  
ENGINEERING INC.  
763-585-6742  
763-585-6757 fax  
Email: steen@steeneng.com  
5430 Douglas Drive North  
Crystal, MN 55429  
Steen Job #SSI201701



**Colorado Springs Utilities**  
It's how we're all connected

COLORADO SPRINGS UTILITIES  
PROPANE-AIR PLANT  
GENERAL EQUIPMENT LAYOUT  
VAPORIZER, BLENDER,  
AIR COMPRESSOR AND PUMP AREAS  
11583-M-200  
1 OF 1  
PROJ: PROPANE-AIR SYSTEM  
PROJ #: 11583

**NOTES:**

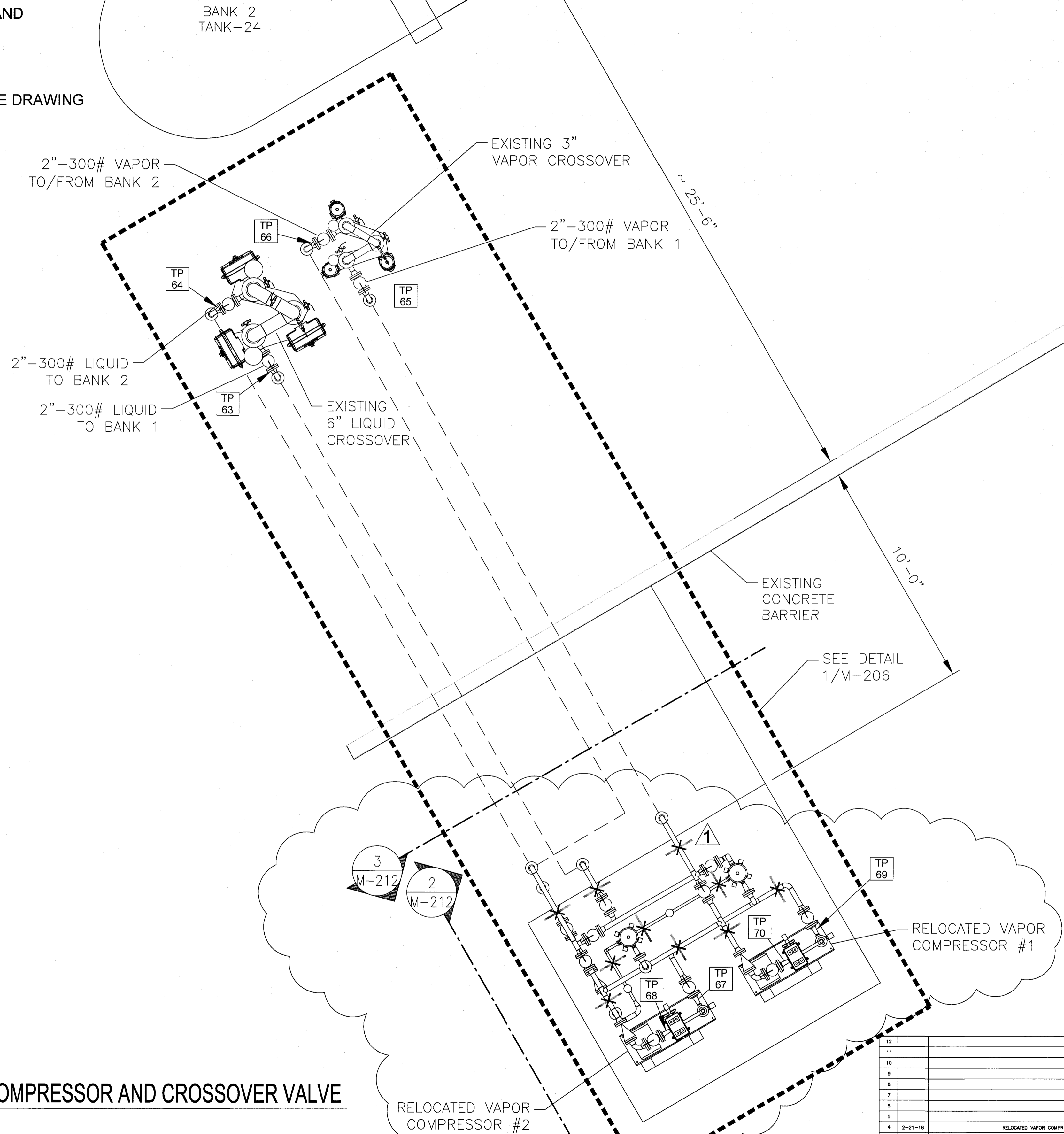
1 SEE STRUCTURAL DRAWINGS AND SPECS FOR CONCRETE AND SUPPORT DETAILS (11583-S-101 - S-109).

- SEE DRAWING 11583-M-213 FOR TIE-IN POINT LIST.

- FOR DIMENSIONAL PLAN OF VAPOR COMPRESSOR AREA SEE DRAWING 11583-M-206. FOR ELEVATION SEE DRAWING 11583-M-212.

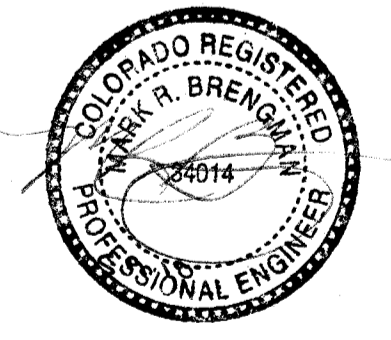
**SYMBOLS**

✕ SUPPORT LOCATIONS



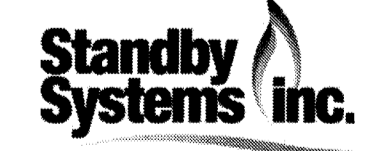
1 PLAN VIEW - VAPOR COMPRESSOR AND CROSSOVER VALVE  
M-201 NONE

12					ORIG. DESIGNED BY:				
11					ORIG. ISSUE DATE:				
10					REDESIGNED BY:				
9									
8									
7									
6									
5									
4	2-21-18	RELOCATED VAPOR COMPRESSORS		AK	REVISED DATE:	BY:	DATE:	FILE #:	1 OF 1
3	1-25-18	IFC SUBMITTAL		AK	ORIG.:	STANDBY SYSTEMS, INC.	DWG. #:	11583-M-201	SHT. #:
2	11-6-17	MODIFIED THE NOTES		AK	PROJ.:	PROPANE-AIR SYSTEM	PROJ. #:	11583	
1	10-20-17	FOR REVIEW		AK	ACAD #:		FILE #:		SHOP DWG
REV.	DATE	DESCRIPTION		APPRO.	DRAWN BY				



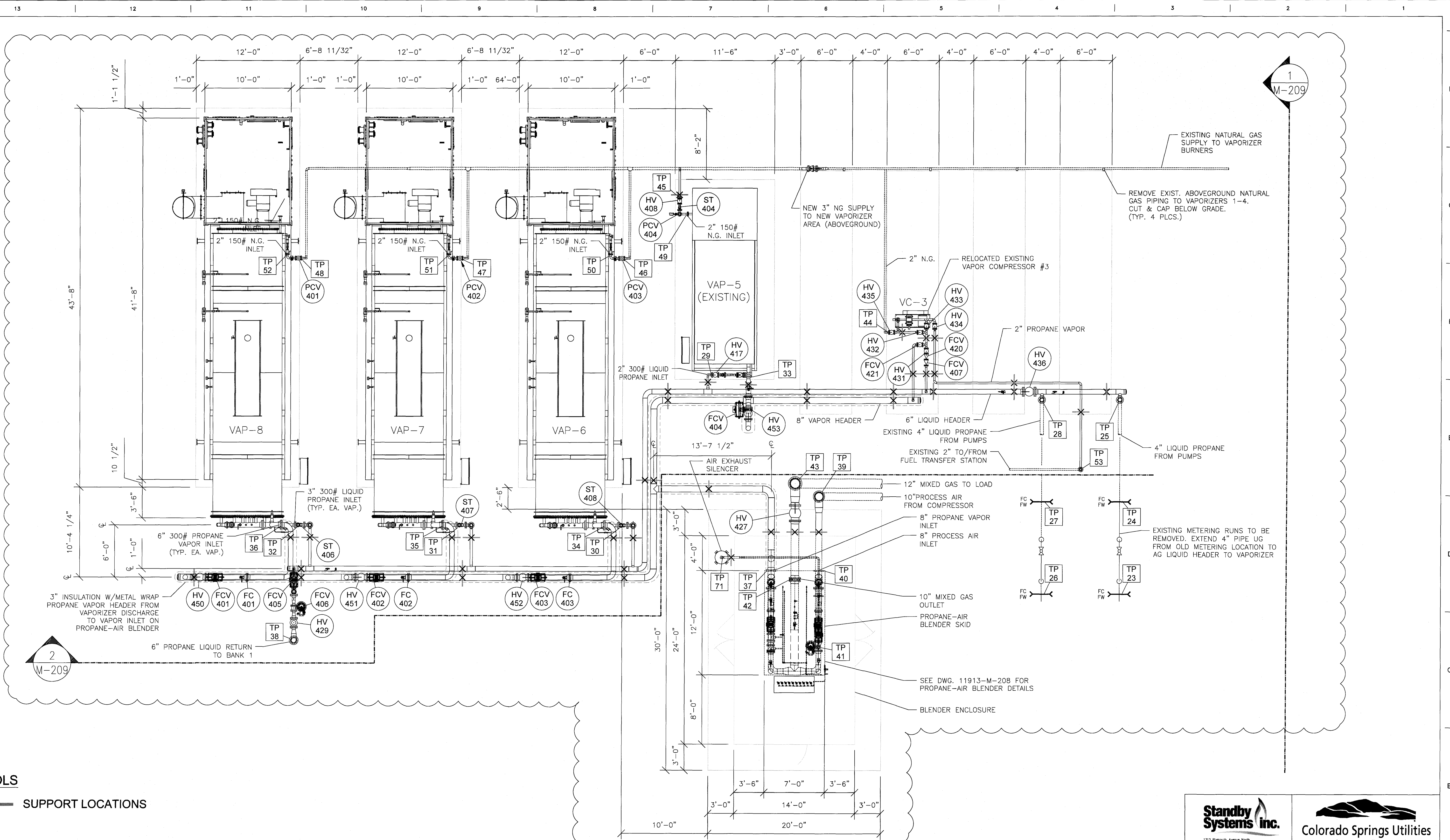
**STEEN**  
ENGINEERING INC.

763-585-6742  
763-585-6757 fax  
Email: steen@steeneng.com  
5430 Douglas Drive North  
Crystal, MN 55429  
Steen Job #SSI201701



**Colorado Springs Utilities**  
It's how we're all connected

COLORADO SPRINGS UTILITIES  
PROPANE-AIR PLANT  
GENERAL EQUIPMENT LAYOUT  
VAPOR COMPRESSOR AND CROSSOVER VALVE



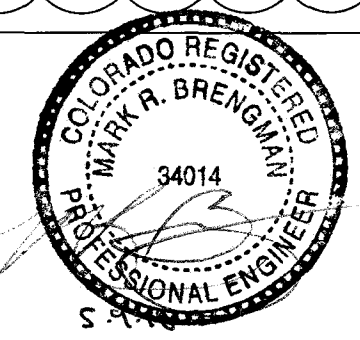
1  
M-209

2  
M-209

**SYMBOLS**  
 SUPPORT LOCATIONS

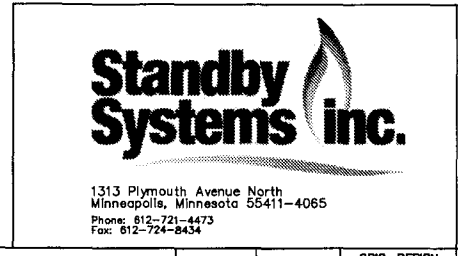
- NOTES:**
1. SEE STRUCTURAL DRAWINGS AND SPECS FOR CONCRETE AND SUPPORT DETAILS (11583-S-101 - 109).
  2. SEE DRAWING 11583-M-213 FOR TIE-IN POINT LIST.
  3. FOR ELEVATION OF VAPORIZER/BLENDER AREA SEE DRAWING 11583-M-209.

1  
M-203 NONE  
**PLAN VIEW - VAPORIZER/BLENDER AREA**



**STEEN ENGINEERING INC.**  
 763-585-6742  
 763-585-6757 fax  
 Email: steen@steeneng.com  
 5430 Douglas Drive North  
 Crystal, MN 55429  
 Steen Job #SSI201701

REV.	DATE	DESCRIPTION	APPD.	DRAWN BY
12				
11				
10				
9				
8				
7				
6	4-25-18	REVISED FOR NEW VAPORIZERS		
5	3-2-18	ADDED INSULATION TO VAPOR HEADER		
4	2-8-18	CSU REDLINES		
3	1-25-18	IFC SUBMITTAL		
2	11-3-17	UPDATED VAPORIZER PIPING AND NOTES		
1	10-20-17	FOR REVIEW		



COLORADO SPRINGS UTILITIES PROPANE-AIR PLANT			
SITE LAYOUT PROPANE VAPORIZERS PROPANE-AIR BLENDER			
ORG: STANDBY SYSTEMS, INC. DWG. NO.: 11583-M-203 PROJ.: PROPANE-AIR SYSTEM	SHEET NO.: 1 OF 1 PROJ. NO.: 11583	ISS. DATE:	ISS. BY:

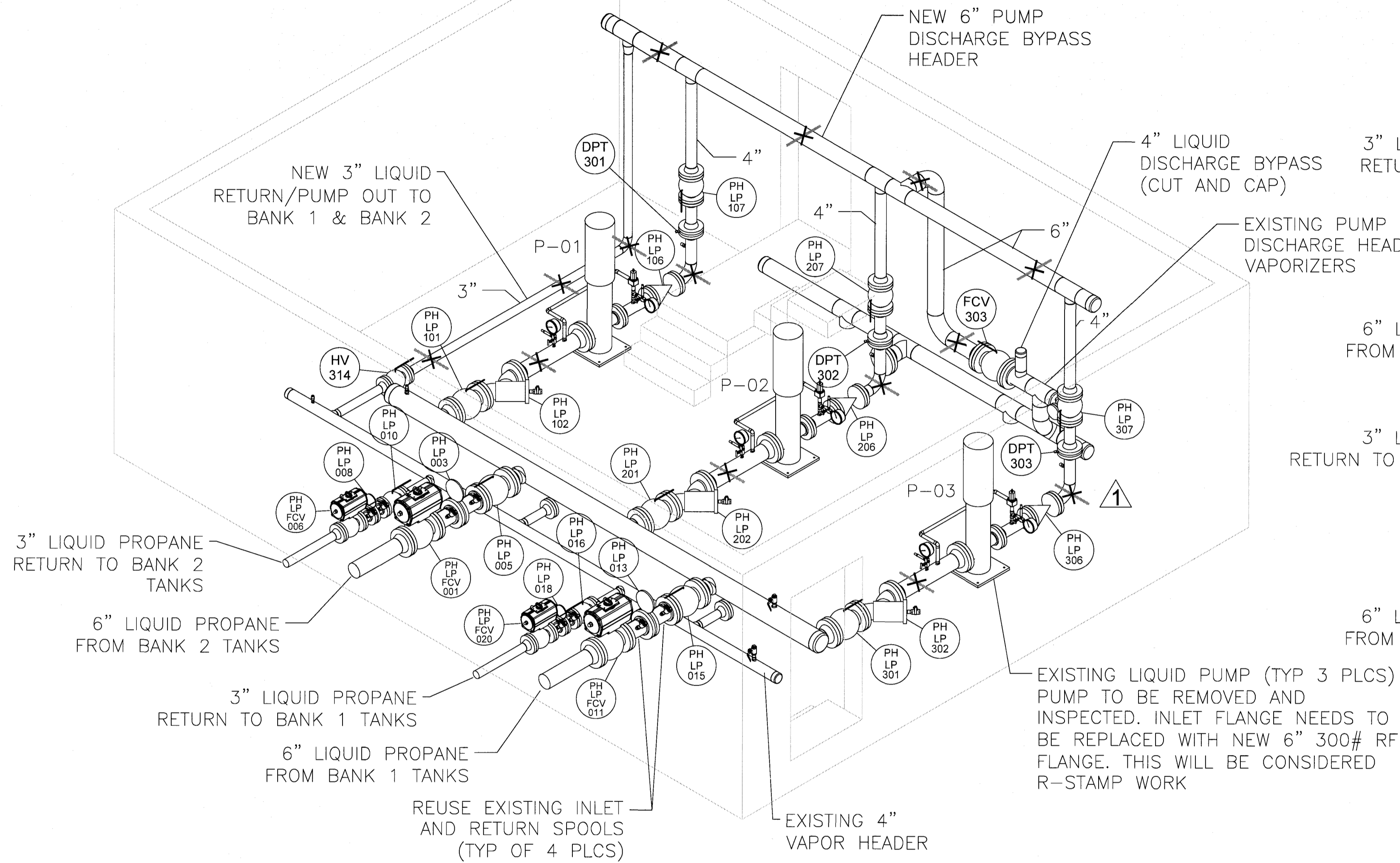
**NOTES:**

▲ SEE STRUCTURAL DRAWINGS AND SPECS FOR CONCRETE AND SUPPORT DETAILS DWGS (11583-S-101 - 109).

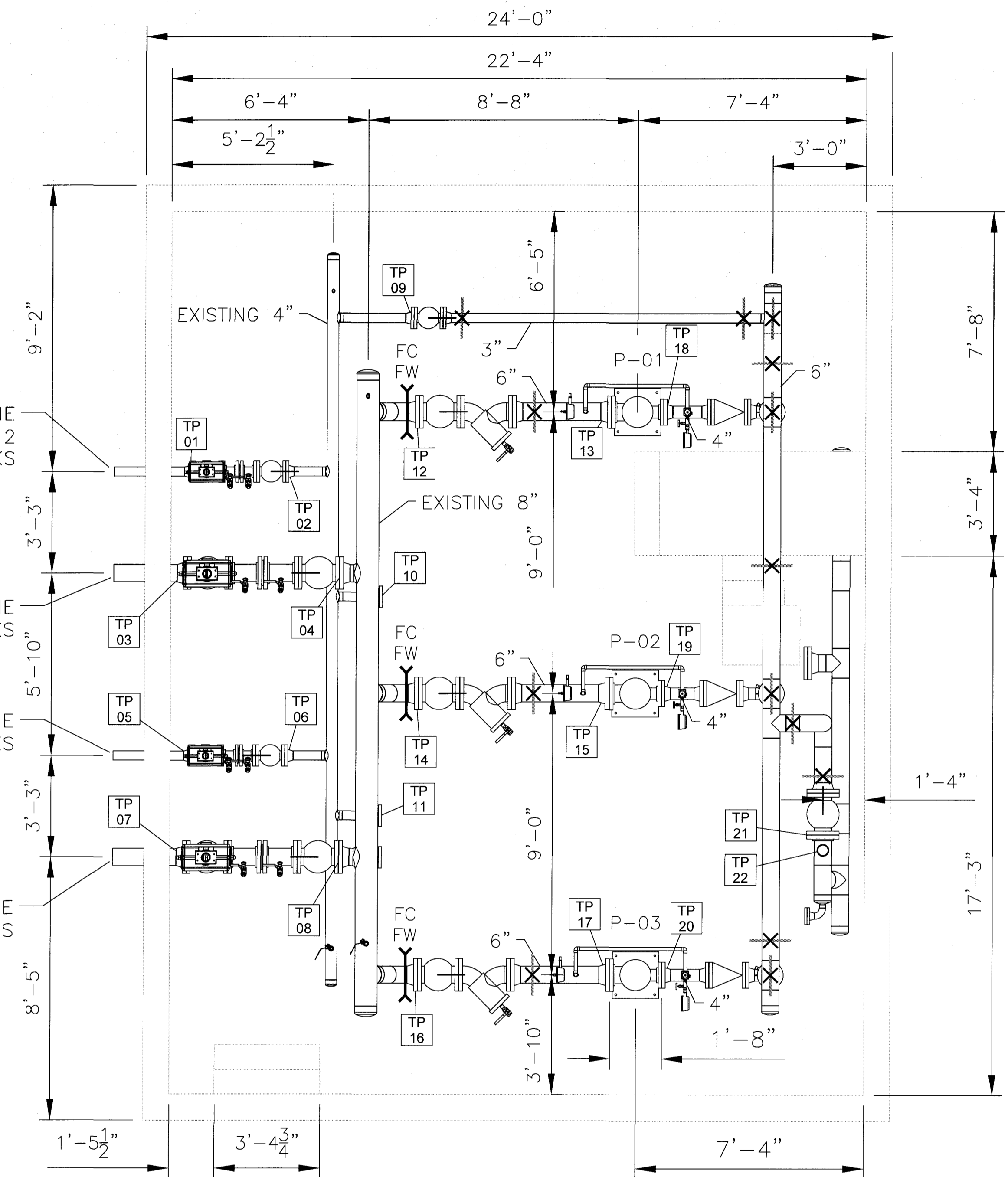
- SEE DRAWING 11583-M-213 FOR TIE-IN POINT LIST.

**SYMBOLS**

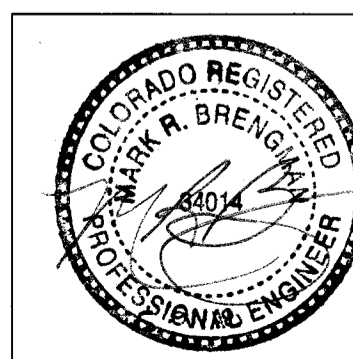
✕ SUPPORT LOCATIONS



2 ISOMETRIC VIEW - PROPANE PUMP BUILDING  
M-205 NONE



1 PLAN VIEW - PROPANE PUMP BUILDING  
M-205 NONE



**STEEN**  
ENGINEERING INC.  
763-585-6742  
763-585-6757 fax  
Email: steen@steeneng.com  
5430 Douglas Drive North  
Crystal, MN 55429  
Steen Job #SSI201701

REV.	DATE	DESCRIPTION	APPD.	DESIGNED BY
12				
11				
10				
9				
8				
7				
6				
5				
4	2-8-18	CSU REDLINES	AJK	
3	1-25-18	IFC SUBMITTAL	AJK	
2	11-6-17	ADDED ORIFICE FLANGE SET	AJK	
1	10-20-17	FOR REVIEW	AJK	

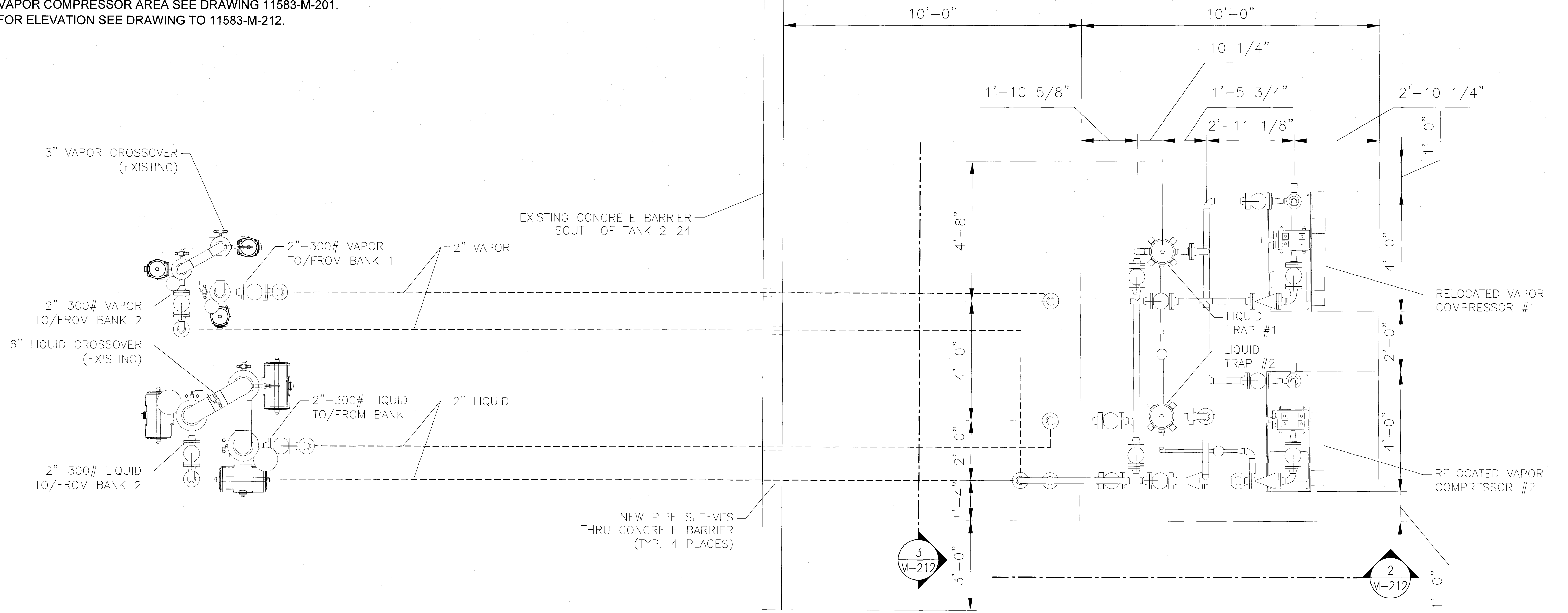
1313 Plymouth Avenue North  
Minneapolis, Minnesota 55411-4055  
Tel: 612-224-5577

It's how we're all connected

COLORADO SPRINGS UTILITIES PROPANE-AIR PLANT	
PLAN AND ISOMETRIC VIEWS PUMP BUILDING	
ORG. DESIGNED BY: - ORG. ISSUE DATE: - REDRAWN BY: -	ISSUE DATE: 10/20/17 ORG. NO.: 11583-M-205 PROJ. NO.: 11583 ACAD. NO.: - FILE NO.: - SHOP NO.: -

**NOTES:**

- FOR STRUCTURAL SUPPORT LOCATIONS OF VAPOR COMPRESSOR AREA SEE DRAWING 11583-M-201.  
FOR ELEVATION SEE DRAWING TO 11583-M-212.

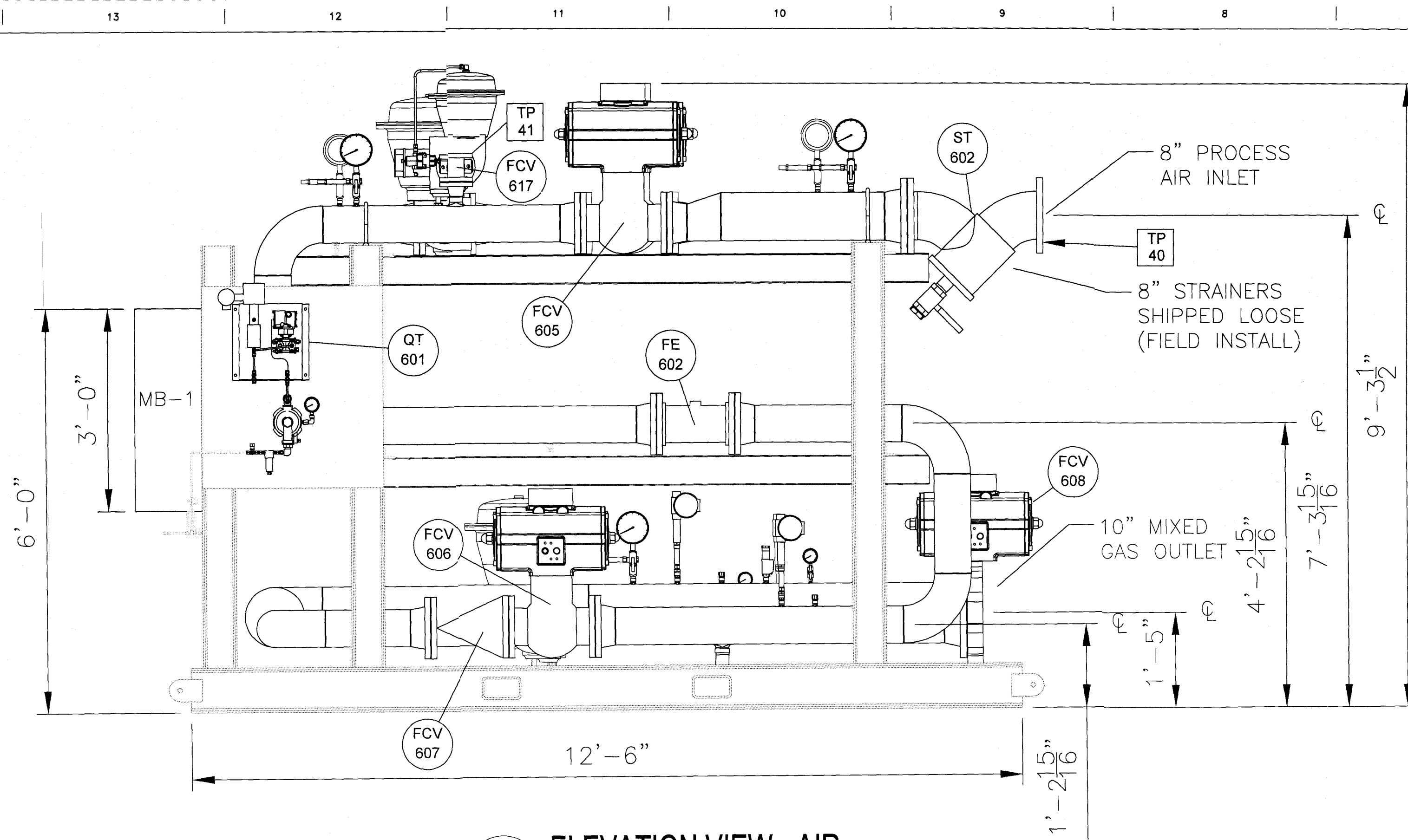


**1** PLAN VIEW - VAPOR COMPRESSOR AND CROSSOVER VALVE  
M-206 NONE

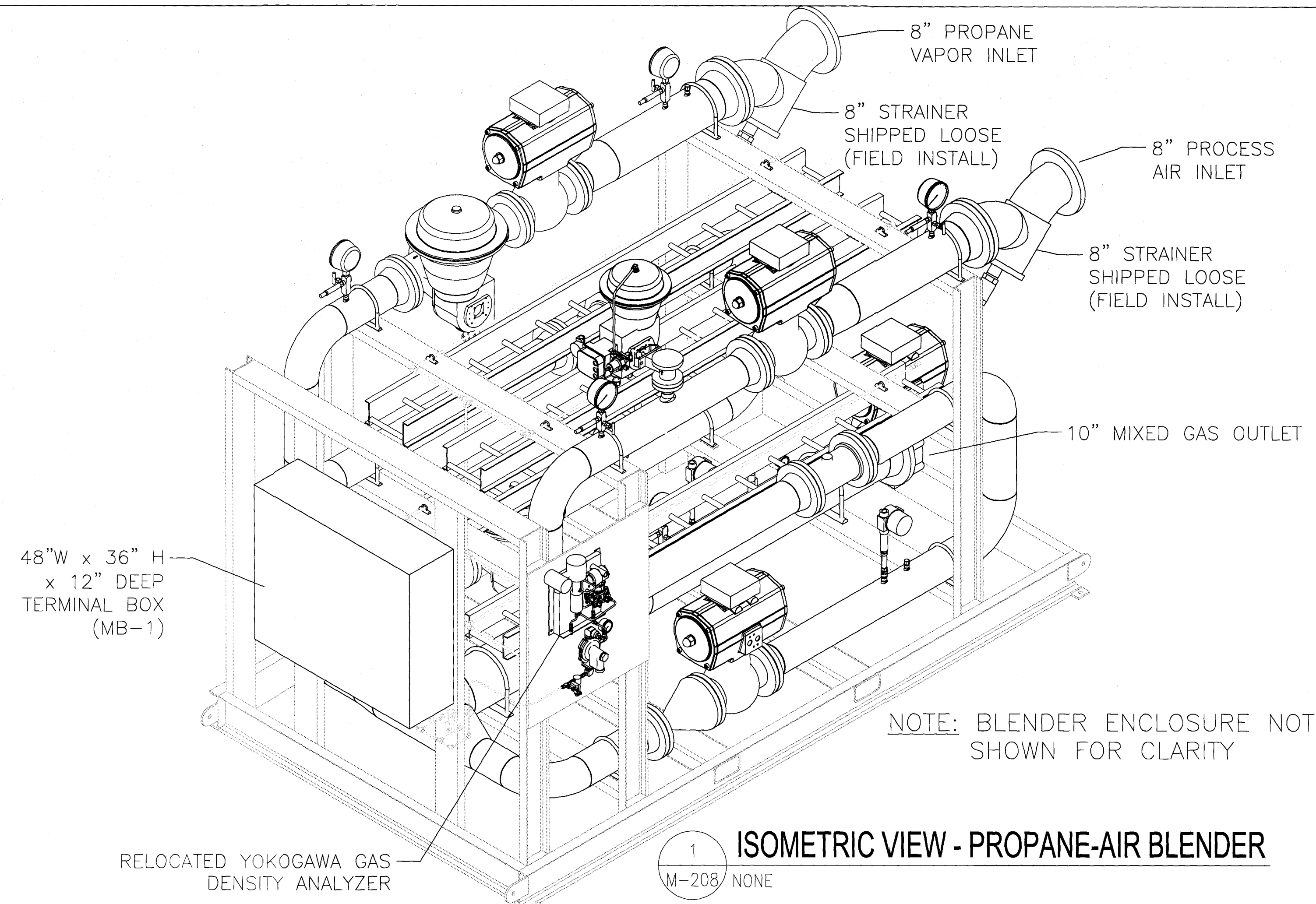
**STEEN ENGINEERING INC.**  
763-585-6742  
763-585-6757 fax  
Email: steen@steeneng.com  
5430 Douglas Drive North  
Crystal, MN 55429  
Steen Job #SSI201701

REV.	DATE	DESCRIPTION	APPL.	DRAWN BY	DRG. DESIG.	DRG. ISSUE DT.	ISSUED BY:	ISSUE DATE:	IS DWG #:	SP #:	DRG #:	SHEET #:
12												
11												
10												
9												
8												
7												
6												
5	2-21-18	RELOCATED VAPOR COMPRESSORS										
4	2-7-18	CSU REDLINES										
3	1-25-18	IFC SUBMITTAL										
2	11-6-17	UPDATED NOTES										
1	10-20-17	FOR REVIEW										

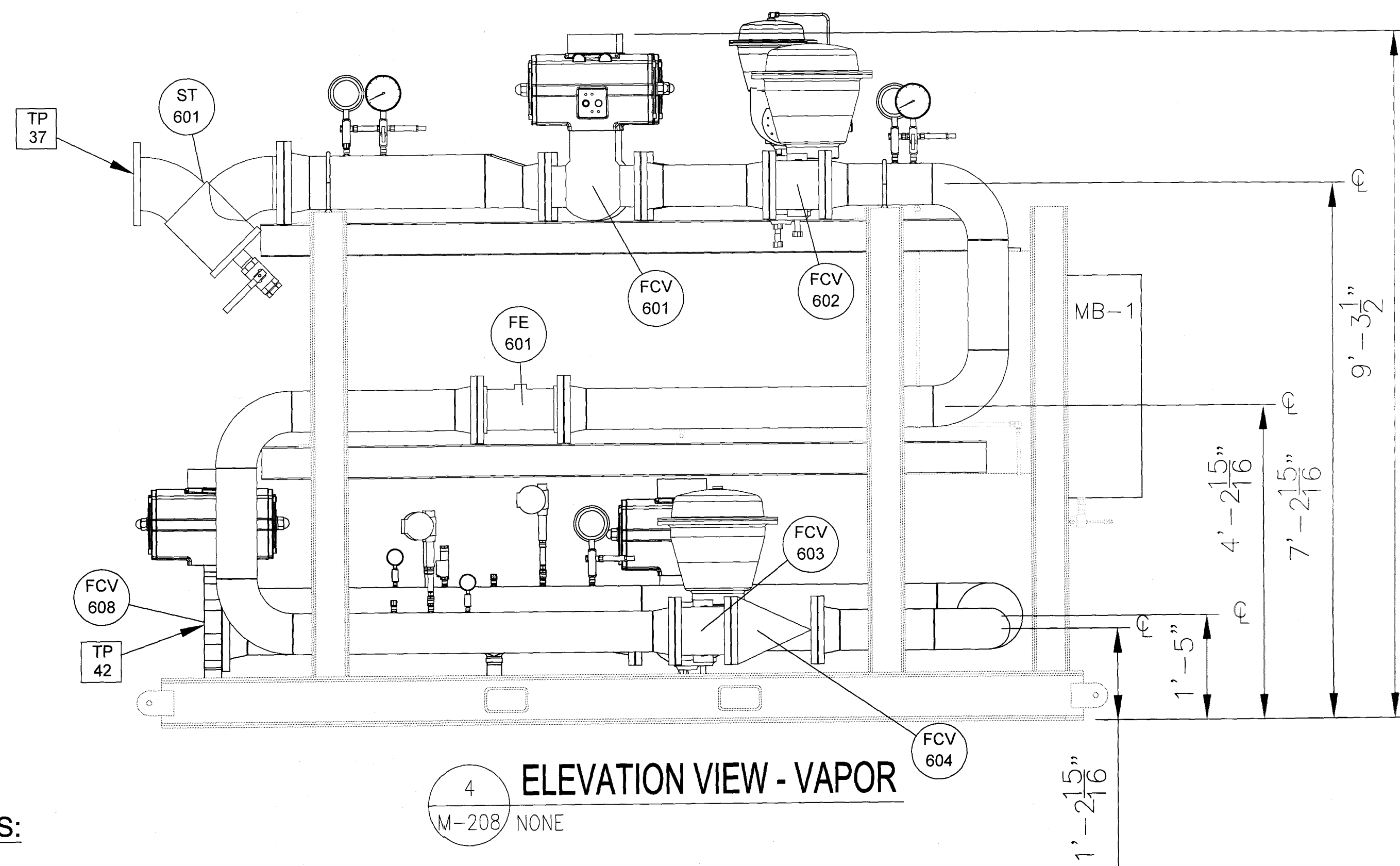
DRG. DESIG. COLORADO SPRINGS UTILITIES  
DRG. ISSUE DT. - PROPANE-AIR PLANT  
ISSUED BY: -  
ISSUE DATE: -  
IS DWG #: -  
SP #: -  
DRG #: STANDBY SYSTEMS, INC. 11583-M-206 1 OF 1  
SHEET #:  
DRG. APPROV. BY: PROJ. PROPANE-AIR SYSTEM PROJ. # 11583  
FILE #:  
SHEET #:



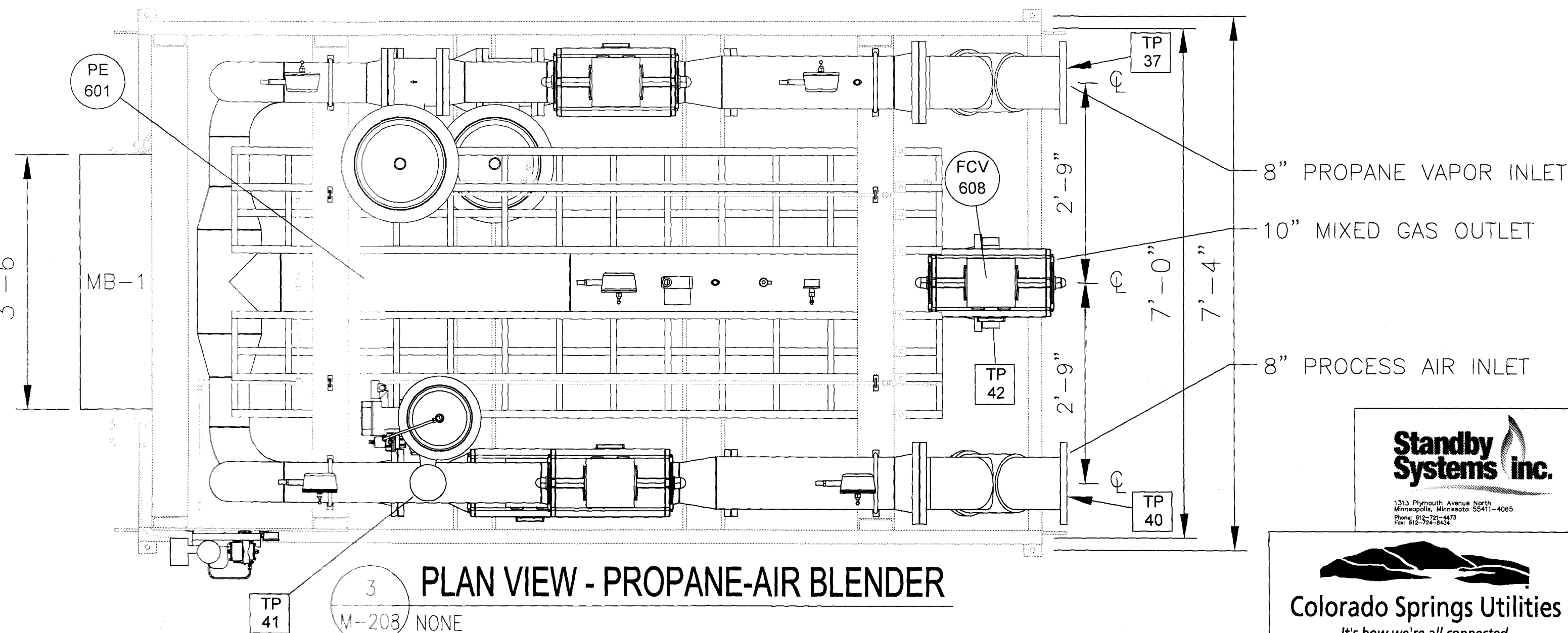
2 ELEVATION VIEW - AIR  
M-208 NONE



1 ISOMETRIC VIEW - PROPANE-AIR BLENDER  
M-208 NONE



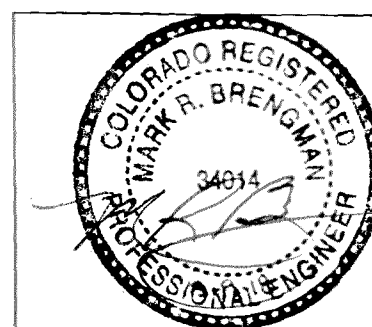
4 ELEVATION VIEW - VAPOR  
M-208 NONE



3 PLAN VIEW - PROPANE-AIR BLENDER  
M-208 NONE

NOTES:

- SEE DRAWING 11583-M-213 FOR TIE-IN POINT LIST
- FOR DIMENSIONAL PLAN OF PROPANE-AIR BLENDER AREA SEE DRAWING 11583-M-203



**STEEN**  
ENGINEERING INC.  
763-585-6742  
763-585-6757 fax  
Email: steen@steeneng.com  
5430 Douglas Drive North  
Crystal, MN 55429  
Steen Job #SSI201701

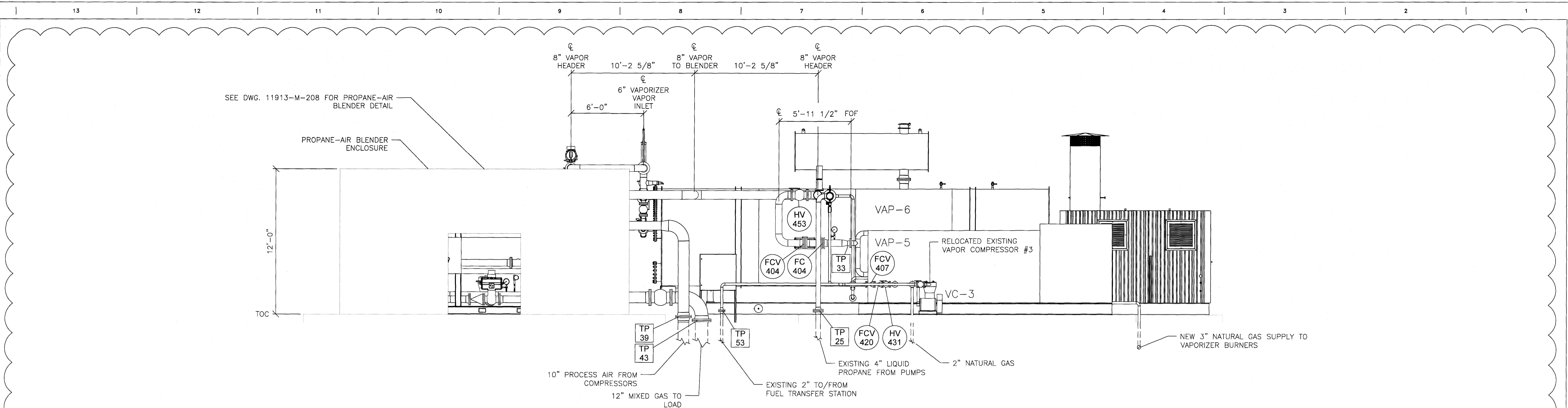
REV.	DATE	DESCRIPTION	APPD.	DRAWN BY
12				
11				
10				
9				
8				
7				
6				
5				
4				
3	1-25-18	IFC SUBMITTAL	AK	
2	11-8-17	REMOVED CENTERLINES	AK	
1	10-20-17	FOR REVIEW	AK	

ORIG. DESIGN	ED DWG #	ED #
DWG. ISSUE DATE	ORIG. #	ORIG. #
REVISION #	STANDBY SYSTEMS, INC.	11583-M-208
	PROPANE-AIR SYSTEM	11583
	FILE #	SHOP DWG.

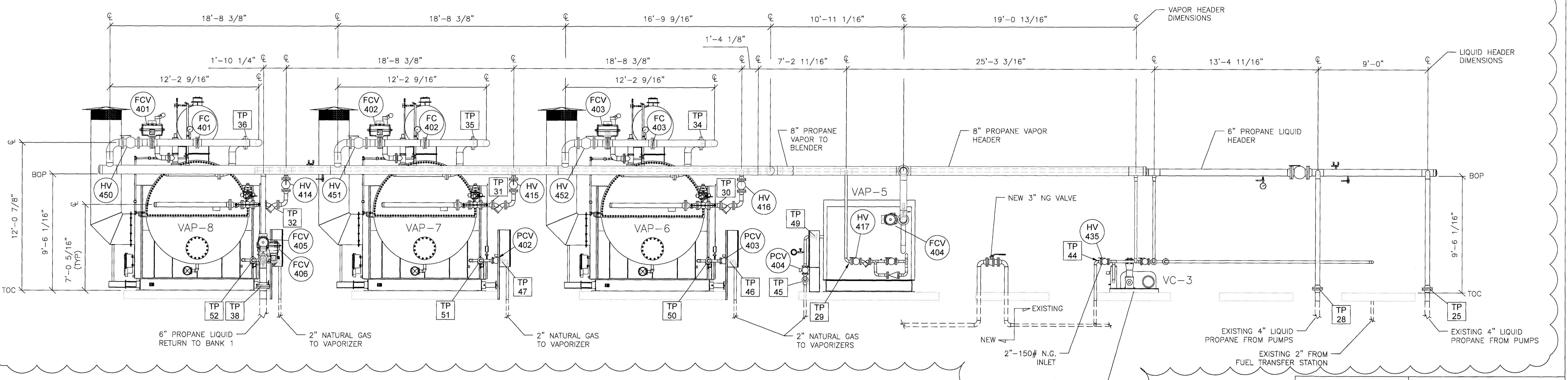


**Colorado Springs Utilities**  
It's how we're all connected

COLORADO SPRINGS UTILITIES PROPANE-AIR PLANT		
PLAN AND ELEVATION, PROPANE AIR BLENDER		

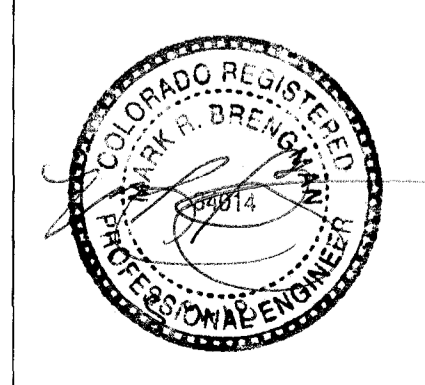


1 SIDE ELEVATION VIEW  
M-209 NONE



2 FRONT ELEVATION VIEW  
M-209 NONE

- NOTES:**
1. ALL DIMENSIONS TO BE FIELD VERIFIED BEFORE CONSTRUCTION.
  2. SEE DRAWING 11583-M-213 FOR TIE-IN POINT LIST.
  3. FOR DIMENSIONAL PLAN OF VAPORIZER/BLENDER AREA SEE DRAWING 11583-M-203.



**STEEN ENGINEERING INC.**  
763-585-6742  
763-585-6757 fax  
Email: steen@steeneng.com  
5430 Douglas Drive North  
Crystal, MN 55429  
Steen Job #SSI201701

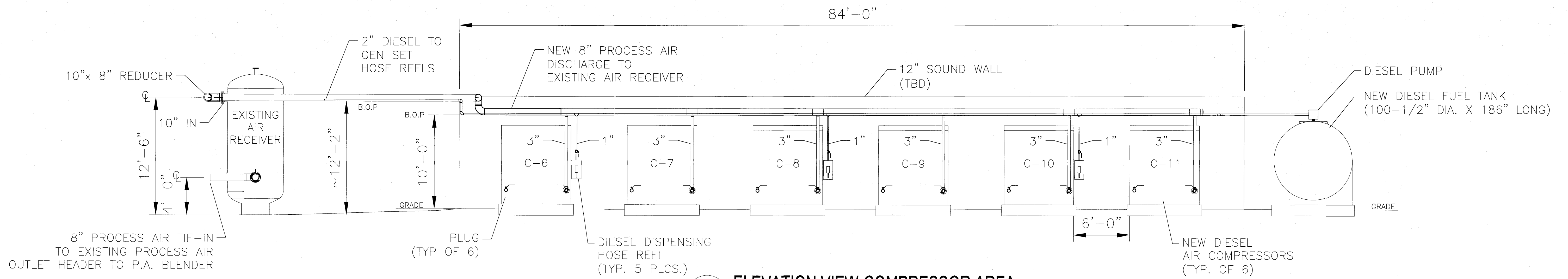
12					
11					
10					
9					
8					
7					
6					
5	4-25-18	REVISED FOR NEW VAPORIZERS	TEL	ISSUE DATE	ISSUE #
4	2-7-18	CSU REDLINES	AJK	DATE	ISSUE #
3	1-25-18	IFC SUBMITTAL	AJK	DATE	ISSUE #
2	11-3-17	UPDATED VAPORIZER PIPING	AJK	DATE	ISSUE #
1	10-20-17	FOR REVIEW	AJK	DATE	ISSUE #
REV.	DATE	DESCRIPTION	APP'D.	DRAWN BY	



COLORADO SPRINGS UTILITIES  
PROPANE-AIR PLANT  
DETAILS, WATERBATH VAPORIZERS

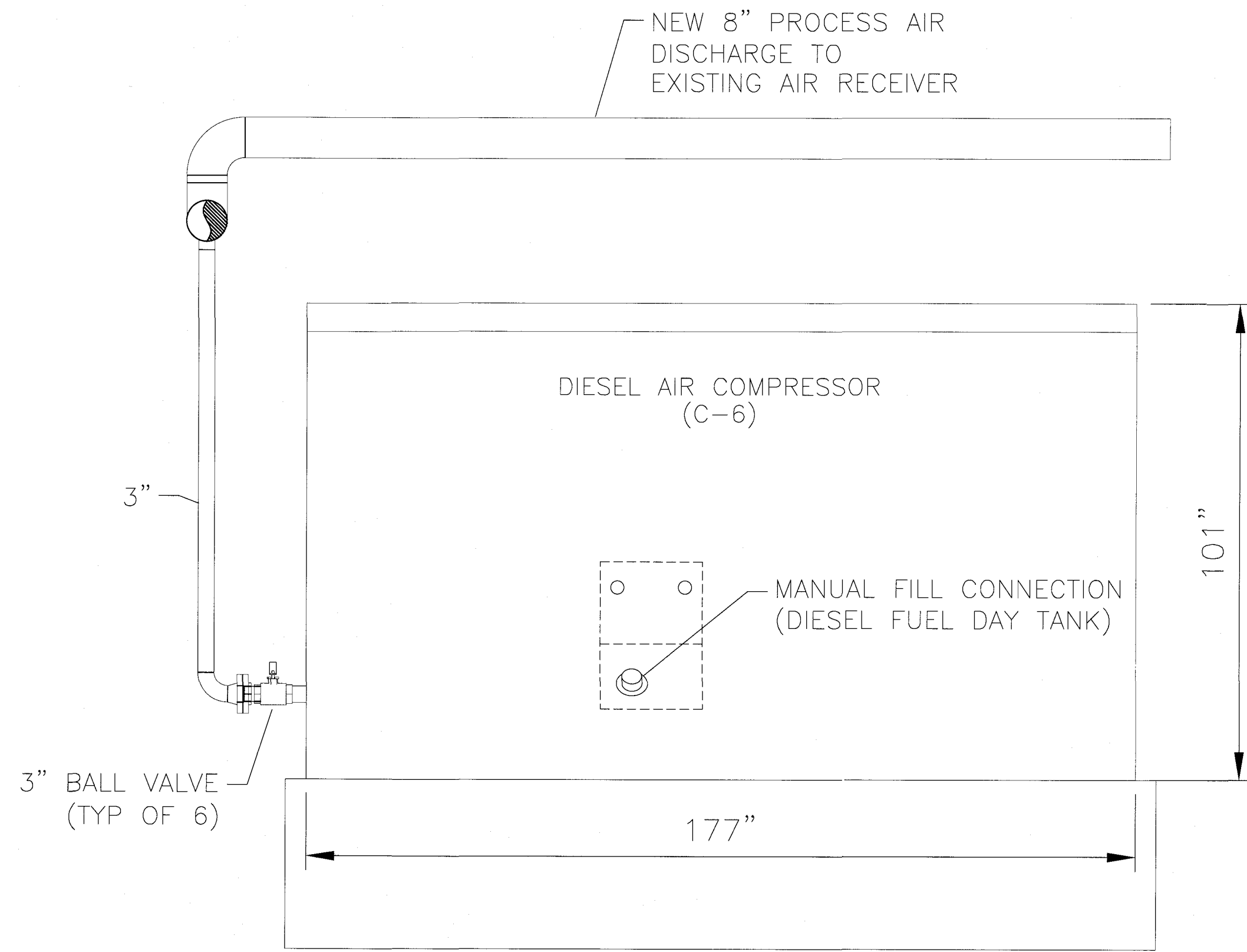
STANDBY SYSTEMS, INC.  
11583-M-209  
PROJ. # 11583  
SHP DWG. 1 OF 1





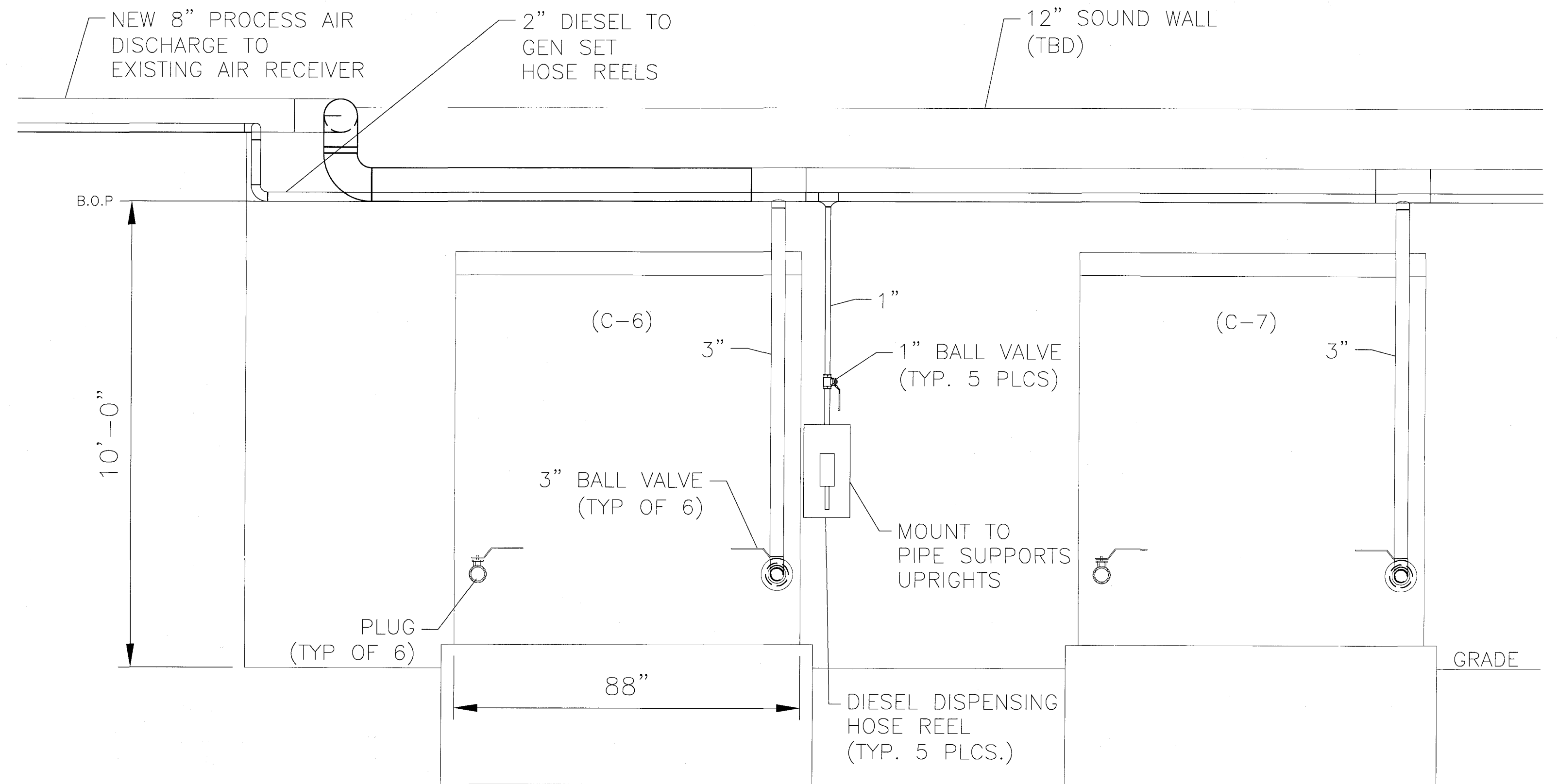
**1 ELEVATION VIEW-COMPRESSOR AREA**

1  
M-214 NONE



**2 SIDE ELEVATION VIEW**

2  
M-214 NONE

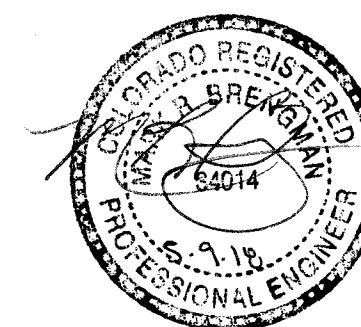


**3 FRONT ELEVATION VIEW**

3  
M-214 NONE

**NOTES:**

- SEE STRUCTURAL DRAWINGS AND SPECS FOR CONCRETE AND SUPPORT DETAILS (11583-S-101 - 109).
- FOR DIMENSIONAL PLAN OF COMPRESSOR AREA SEE DRAWING 11583-M-200.
- FOR SUPPORT SPACING CHART SEE DRAWING 11583-S-INDEX.



NO.	DATE	DESCRIPTION	APPD.	DRAWN BY	REV. DATE	FILE #	SHOP DWG.
1	1-25-18	IFC SUBMITTAL		ALK			

12					ORG. DESIGN:		
11					ORG. ISSUE DT:		
10					DESIGN BY:		
9					ISSUE DATE:	ED DWG #	ED #
8					ORG:	STANDBY SYSTEMS, INC.	DWG # 11583-M-214
7					PROJ:	PROPANE-AIR SYSTEM	PROJ # 11583
6					REV. DATE:		FILE #
5							
4							
3							
2							
1							

1312 Plymouth Avenue South Greenwood Village CO 80120-4005 Phone: 303-750-3300		COLORADO SPRINGS UTILITIES PROPANE-AIR PLANT ELEVATION VIEWS, AIR COMPRESSORS AND AIR RECEIVER PROPANE-AIR SYSTEM	
It's how we're all connected		1 OF 1	