

"NABULSI-ABUSHABAN SUBDIVISION"
CLOSURE SHEETS 08.16.23
Sheet 1 of 7

Inverse With Area

Wed Aug 16 15:00:01 2023

PntNo	Bearing	Distance	Northing	Easting	Description
	N00°46'00"E	1125.12	9814.29	9515.81	
	N89°58'43"E	960.09	10939.31	9530.86	
	S00°46'00"W	1125.11	10939.66	10490.95	
	S89°58'40"W	960.09	9814.66	10475.90	
			9814.29	9515.81	

Closure Error Distance > 0.0000
Total Distance Inversed > 4170.41

Area: 1080107.622 Sq. Feet, 24.7959 Acres

N00°46'E 1125.12'

S00°46'W 1125.11'

"NET" BOUNDARY
1080107.622 Sq. Feet
24.7959 Acres

Inverse With Area

Wed Aug 16 14:52:31 2023

PntNo	Bearing	Distance	Northing	Easting	Description
	N00°46'00"E	15.00	8430.28	12341.43	
	N89°58'40"E	940.09	8445.28	12341.63	
	N00°46'00"E	1110.11	8445.65	13281.72	
	N89°58'43"E	20.00	9555.65	13296.57	
	S00°46'00"W	1125.11	9555.66	13316.57	
	S89°58'40"W	960.09	8430.66	13301.52	
			8430.28	12341.43	

Closure Error Distance > 0.0000
Total Distance Inversed > 4170.39

Area: 36603.438 Sq. Feet, 0.8403 Acres

R.O.W. ADDITIONS

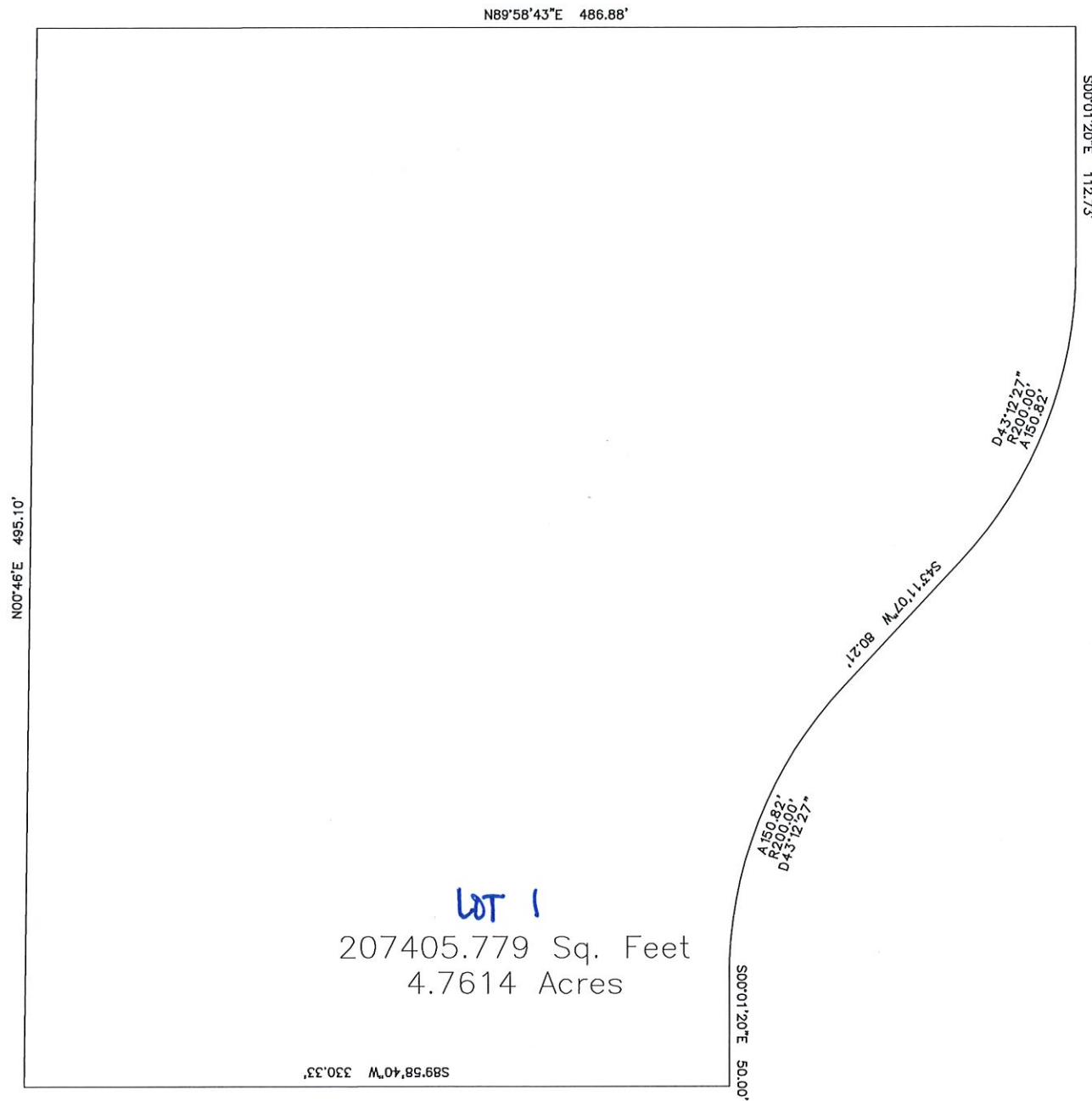
N89°58'43"E 20.00'

S00°46'00"W 1125.11'
N00°46'00"E 1110.11'

N00°46'00"E 1125.11'

N89°58'40"E 940.09'
S89°58'40"W 960.09'

36603.438 Sq. Feet
0.8403 Acres



Inverse With Area

Wed Aug 16 14:52:12 2023

PntNo	Bearing	Distance	Northing	Easting	Description
			10048.16	11296.24	
	N00°46'00"E	495.10	10543.22	11302.87	
	N89°58'43"E	486.88	10543.40	11789.75	
	S00°01'20"E	112.73	10430.68	11789.79	
	Radius: 200.00	Chord: 147.27	Degree: 28°38'52"	Dir: Right	
	Length: 150.82	Delta: 43°12'27"	Tangent: 79.20		
	Chord BRG: S21°34'54"W	Rad-In: S89°58'40"W	Rad-Out: N46°48'53"W		
	Radius PntNo: N: 10430.60	E: 11589.79	10293.73	11735.62	
	S43°11'07"W	80.21	10235.24	11680.72	
	Radius: 200.00	Chord: 147.27	Degree: 28°38'52"	Dir: Left	
	Length: 150.82	Delta: 43°12'27"	Tangent: 79.20		
	Chord BRG: S21°34'54"W	Rad-In: S46°48'53"E	Rad-Out: N89°58'40"E		
	Radius PntNo: N: 10098.37	E: 11826.55	10098.29	11626.55	
	S00°01'20"E	50.00	10048.29	11626.57	
	S89°58'40"W	330.33	10048.16	11296.24	

Closure Error Distance > 0.0000
Total Distance Inversed > 1856.90

Area: 207405.779 Sq. Feet, 4.7614 Acres

N89°58'44"E 354.17'

N00°46'E 615.02'

LOT 2
217800.000 Sq. Feet
5.0000 Acres

S00°46'W 615.02'

S89°58'43"W 354.17'

Inverse With Area

PntNo	Bearing	Distance	Northing	Easting	Description
			11410.20	11435.64	
	N00°46'00"E	615.02	12025.16	11443.87	
	N89°58'44"E	354.17	12025.29	11798.04	
	S00°46'00"W	615.02	11410.33	11789.81	
	S89°58'43"W	354.17	11410.20	11435.64	

Wed Aug 16 14:51:05 2023

Closure Error Distance > 0.0000
Total Distance Inversed > 1938.37

Area: 217800.000 Sq. Feet, 5.0000 Acres

N89°58'43"E 585.92'

N00°46'E 615.02'

S00°46'W 713.07'

LOT 3

404529.541 Sq. Feet
9.2867 Acres

S89°58'43"W 132.71'

N00°01'20"W 97.37'

N89°56'04"W 451.86'

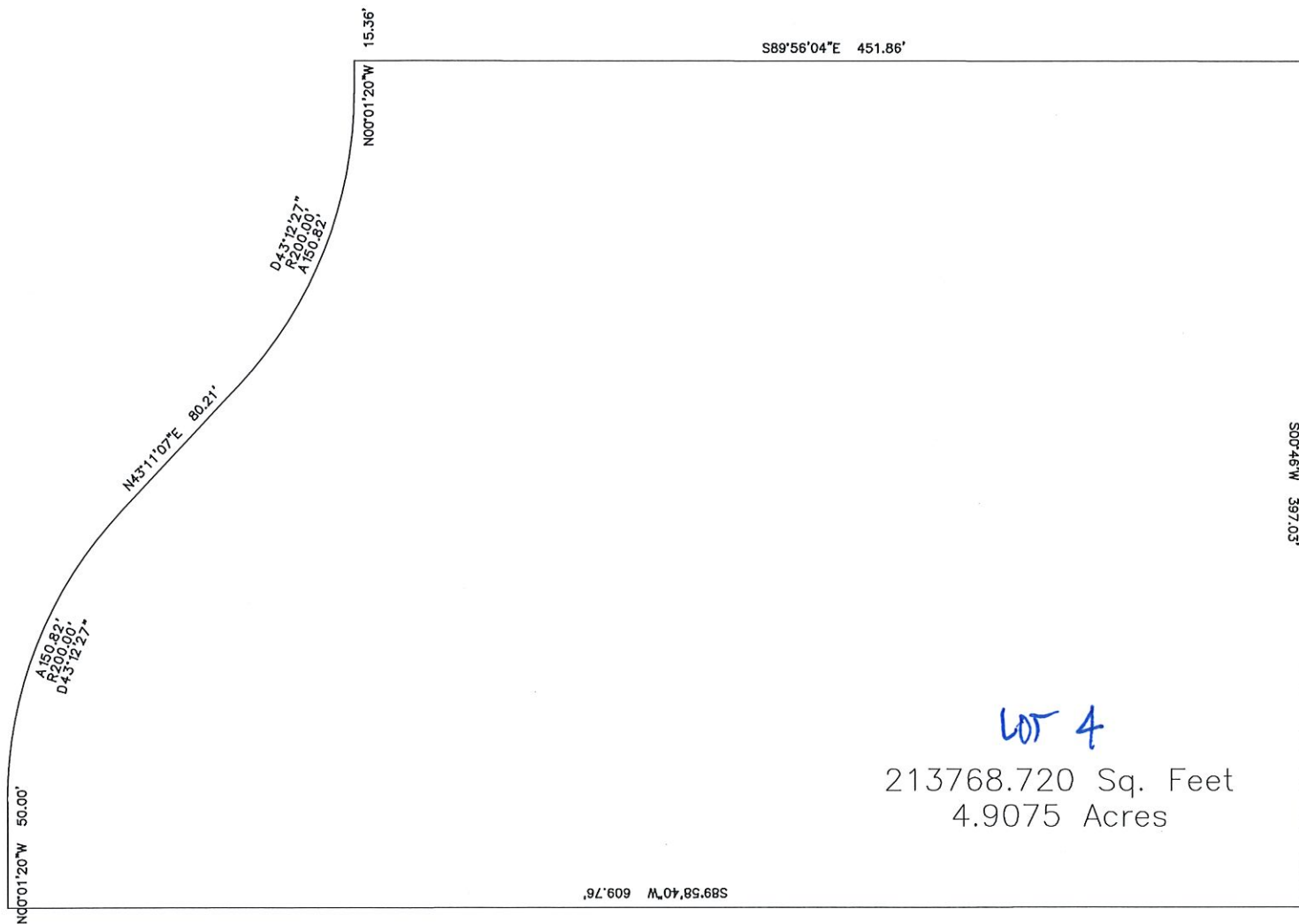
Inverse With Area

Wed Aug 16 14:51:35 2023

PntNo	Bearing	Distance	Northing	Easting	Description
			11368.61	12674.89	
	N00°46'00"E	615.02	11983.57	12683.12	
	N89°58'43"E	585.92	11983.79	13269.04	
	S00°46'00"W	713.07	11270.78	13259.50	
	N89°56'04"W	451.86	11271.30	12807.64	
	N00°01'20"W	97.37	11368.66	12807.60	
	S89°58'43"W	132.71	11368.61	12674.89	

Closure Error Distance > 0.0000
Total Distance Inversed > 2595.94

Area: 404529.541 Sq. Feet, 9.2867 Acres



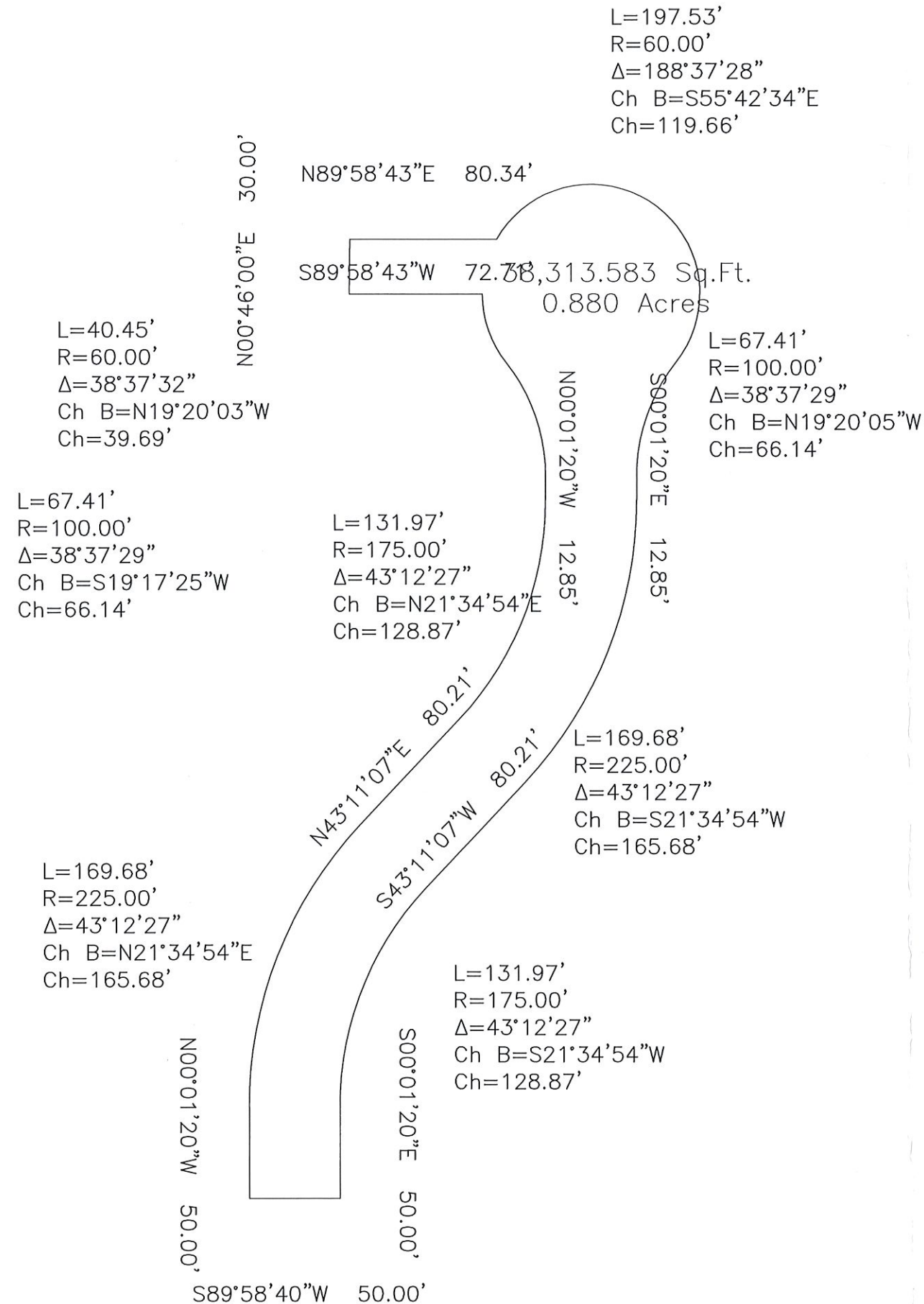
Inverse With Area

Wed Aug 16 14:51:53 2023

PntNo	Bearing	Distance	Northing	Easting	Description
			10033.64	12557.81	
	N00°01'20\"/>				
			10083.64	12557.79	
			10220.59	12611.97	
			10279.08	12666.86	
			10416.03	12721.03	
			10431.39	12721.03	
			10430.87	13172.88	
			10033.88	13167.57	
			10033.64	12557.81	

Closure Error Distance > 0.0000
Total Distance Inversed > 1905.87

Area: 213768.720 Sq. Feet, 4.9075 Acres



Inverse With Area

Thu Feb 9 09:22:30 2023

PntNo	Bearing	Distance	Northing	Easting	Description
			10364.30	18791.60	
	N00°01'19.839"W	50.00	10414.30	18791.58	
	Radius: 225.00	Chord: 165.68	Degree: 25°27'53" Dir: Right		
	Length: 169.68	Delta: 43°12'27"	Tangent: 89.10		
	Chord BRG: N21°34'53.773"E Rad-In: N89°58'40.161"E Rad-Out: S46°48'52.614"E				
	Radius PntNo: N: 10414.39 E: 19016.58				
			10568.37	18852.52	
	N43°11'07.386"E	80.21	10626.86	18907.42	
	Radius: 175.00	Chord: 128.87	Degree: 32°44'26" Dir: Left		
	Length: 131.97	Delta: 43°12'27"	Tangent: 69.30		
	Chord BRG: N21°34'53.773"E Rad-In: N46°48'52.614"W Rad-Out: S89°58'40.161"W				
	Radius PntNo: N: 10746.62 E: 18779.82				
			10746.69	18954.82	
	N00°01'19.839"W	12.85	10759.54	18954.81	
	Radius: 100.00	Chord: 66.14	Degree: 57°17'45" Dir: Left		
	Length: 67.41	Delta: 38°37'29"	Tangent: 35.04		
	Chord BRG: N19°20'04.539"W Rad-In: S89°58'40.161"W Rad-Out: S51°21'10.762"W				
	Radius PntNo: N: 10759.50 E: 18854.81				
			10821.96	18932.91	
	Radius: 60.00	Chord: 39.69	Degree: 95°29'35" Dir: Right		
	Length: 40.45	Delta: 38°37'32"	Tangent: 21.03		
	Chord BRG: N19°20'03.307"W Rad-In: N51°21'10.762"E Rad-Out: N89°58'42.625"E				
	Radius PntNo: N: 10859.43 E: 18979.77				
			10859.40	18919.77	
	S89°58'42.625"W	72.71	10859.38	18847.06	
			10889.38	18847.46	
	N00°45'59.635"E	30.00	10889.38	18847.46	
			10889.41	18927.80	
	N89°58'43.374"E	80.34	10889.41	18927.80	
	Radius: 60.00	Chord: 119.66	Degree: 95°29'35" Dir: Right		
	Length: 197.53	Delta: 188°37'28"	Tangent: 795.70		
	Chord BRG: S55°42'34.491"E Rad-In: S60°01'18.540"E Rad-Out: N51°23'50.441"W				
	Radius PntNo: N: 10859.43 E: 18979.77				
			10821.99	19026.66	
	Radius: 100.00	Chord: 66.14	Degree: 57°17'45" Dir: Left		
	Length: 67.41	Delta: 38°37'29"	Tangent: 35.04		
	Chord BRG: S19°17'24.860"W Rad-In: S51°23'50.441"E Rad-Out: N89°58'40.161"E				
	Radius PntNo: N: 10759.60 E: 19104.81				
			10759.56	19004.81	
	S00°01'19.839"E	12.85	10746.71	19004.82	
	Radius: 225.00	Chord: 165.68	Degree: 25°27'53" Dir: Right		
	Length: 169.68	Delta: 43°12'27"	Tangent: 89.10		
	Chord BRG: S21°34'53.773"W Rad-In: S89°58'40.161"W Rad-Out: N46°48'52.614"W				
	Radius PntNo: N: 10746.62 E: 18779.82				
			10592.64	18943.87	
	S43°11'07.386"W	80.21	10534.15	18888.98	
	Radius: 175.00	Chord: 128.87	Degree: 32°44'26" Dir: Left		
	Length: 131.97	Delta: 43°12'27"	Tangent: 69.30		
	Chord BRG: S21°34'53.773"W Rad-In: S46°48'52.614"E Rad-Out: N89°58'40.161"E				
	Radius PntNo: N: 10414.39 E: 19016.58				
			10414.32	18841.58	
	S00°01'19.839"E	50.00	10364.32	18841.60	
			10364.30	18791.60	
	S89°58'40.161"W	50.00	10364.30	18791.60	

Closure Error Distance > 0.0000
Total Distance Inversed > 1495.27

Area: 38313.583 Sq.Ft., 0.880 Acres

SERENITY RIDGE VIEW