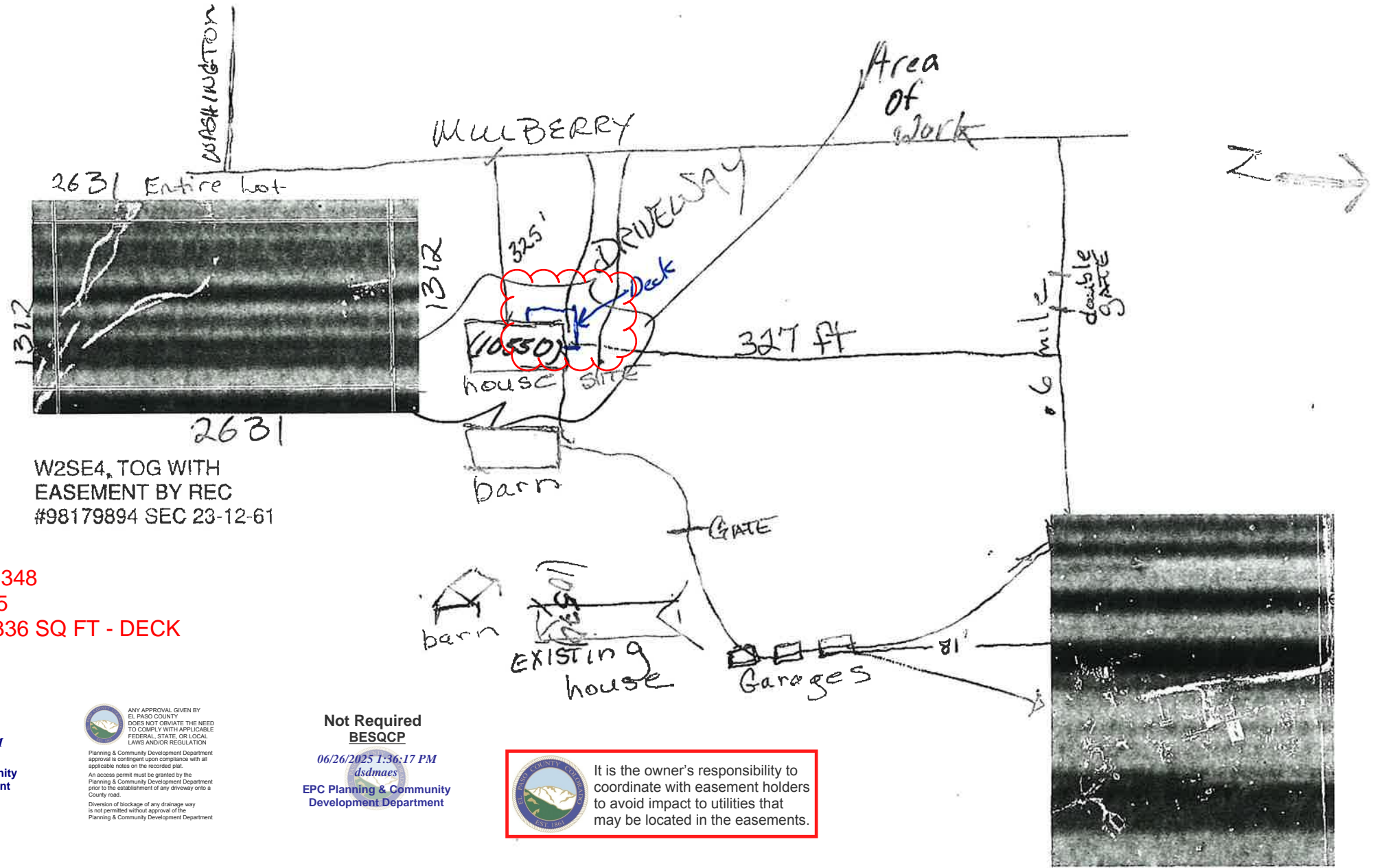


10570 MULBERRY ROAD  
PALHAN, CO 80808

12000-00-183  
A-35  
79.05



FILE - ADD25348  
ZONING - A35  
APPROVED 336 SQ FT - DECK

APPROVED  
Plan Review

06/26/2025 1:36:03 PM

dsdmaes

EPC Planning & Community  
Development Department



ANY APPROVAL GIVEN BY  
EL PASO COUNTY  
DOES NOT OVIATE THE NEED  
TO COMPLY WITH APPLICABLE  
FEDERAL, STATE, OR LOCAL  
LAWS AND/OR REGULATION

Planning & Community Development Department  
approval is contingent upon compliance with all  
applicable notes on the recorded plat.

An access permit must be granted by the  
Planning & Community Development Department  
prior to the establishment of any driveway onto a  
County road.

Division of blockage of any drainage way  
is not permitted without approval of the  
Planning & Community Development Department

Not Required  
BESQCP

06/26/2025 1:36:17 PM

dsdmaes

EPC Planning & Community  
Development Department



It is the owner's responsibility to  
coordinate with easement holders  
to avoid impact to utilities that  
may be located in the easements.