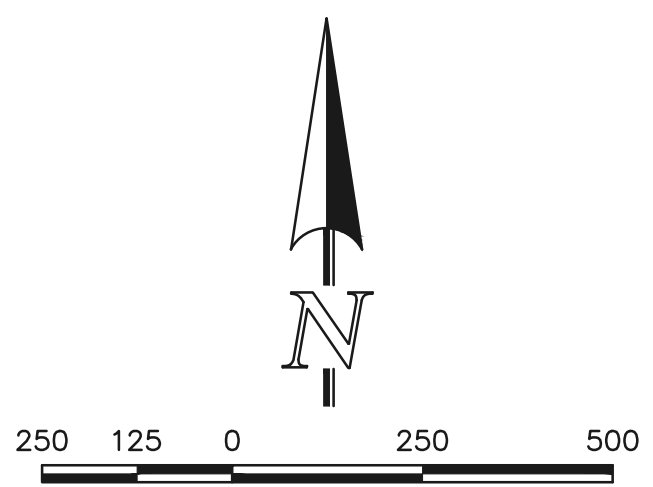
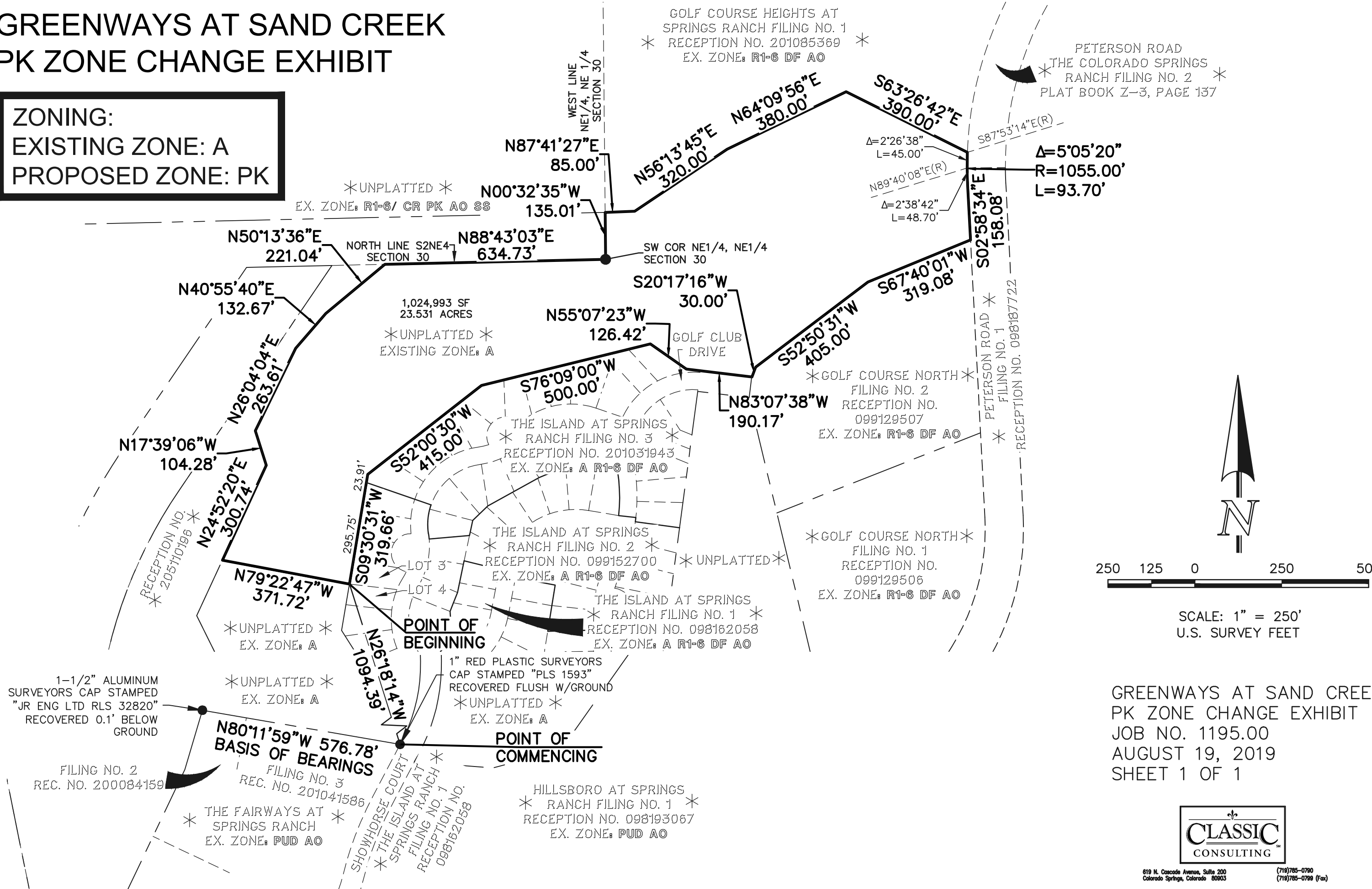


# GREENWAYS AT SAND CREEK PK ZONE CHANGE EXHIBIT

**ZONING:**  
EXISTING ZONE: A  
PROPOSED ZONE: PK



SCALE: 1" = 250'  
U.S. SURVEY FEET

GREENWAYS AT SAND CREEK  
PK ZONE CHANGE EXHIBIT  
JOB NO. 1195.00  
AUGUST 19, 2019  
SHEET 1 OF 1



619 N. Cascade Avenue, Suite 200  
Colorado Springs, Colorado 80903  
(719) 785-0790  
(719) 785-0799 (Fax)