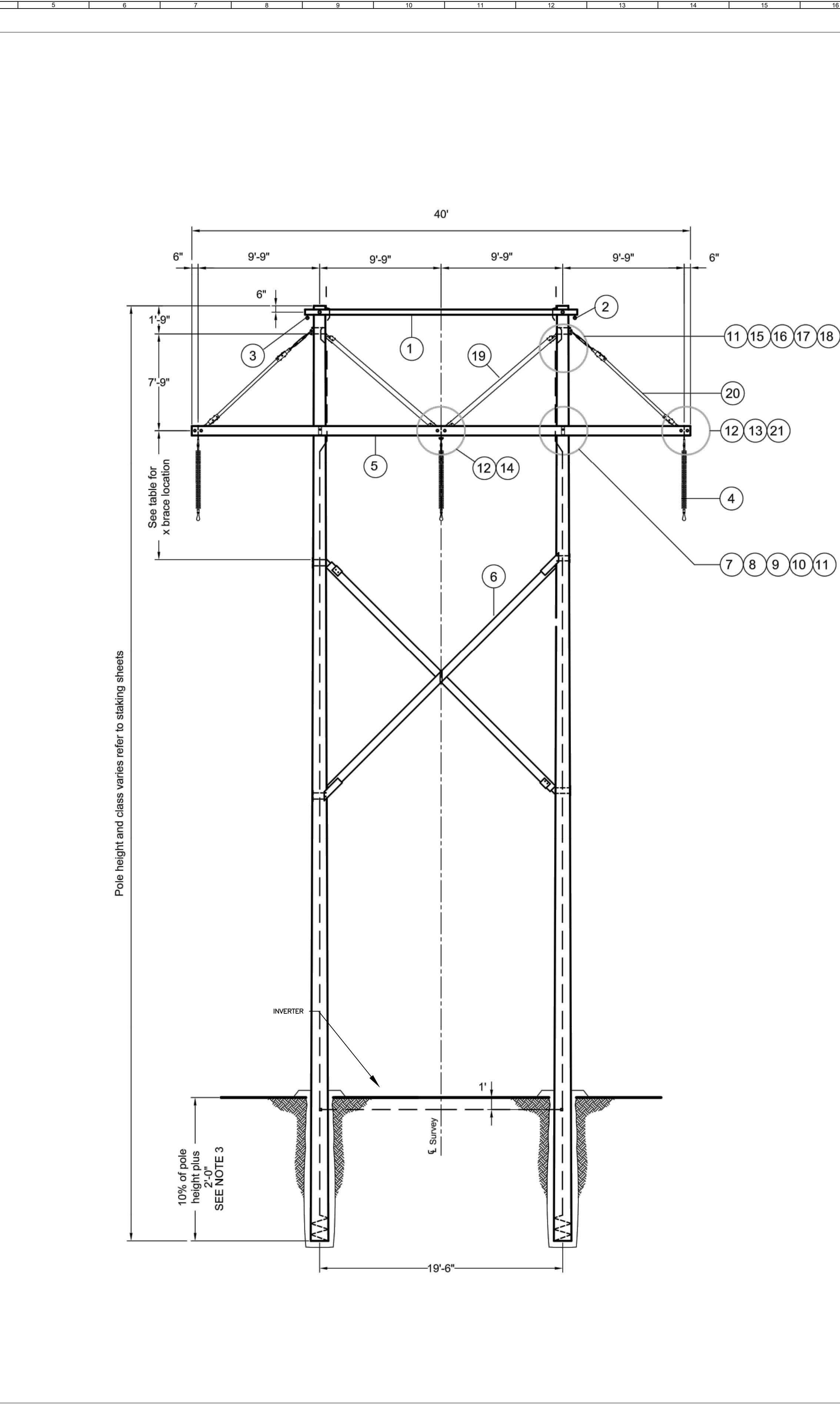


PIKE SOLAR LLC



Appendix U- Elevation Plans

1
2
3
4
5
6
7
8
9
10
11
12
13
14
15
16
17
18
19
20
21



MATERIAL LIST

REF.	REQ'D	DESCRIPTION	MFR.	CATALOG NO.	DETAIL DWG.
1	1	Tie angle OHSW support	Hughes	C3338.1A	TM-7D
2	1	OHSW suspension assembly			TM-4A
3	1	OPGW suspension assembly			TM-4FB
4	3	230kV Suspension insulator assembly			TM-1A
5	2	40' Crossarm type 81, 5 1/8" x 7 1/2"	Hughes	C3338.17A-1	TCD-1
6	1	X-brace assembly 19-6" SP, 20K			TM-110D
7	2	Threaded rod, 7/8 x 28" W/ 2 Nuts	Hughes	TR828-F2N	
8	4	Ribbed tie plate 3" x 9.5", 15/16" Hole	Hughes	1005.810	
9	4	Grid gain 4" x 6 3/4", 15/16" Hole	Hughes	1262-A	
10	2	Spring washer, 15/16" Hole	Hughes	2702.8	
11	8	7/8" Locknut, MF Type	Hughes	MF80	
12	3	Spacer assembly, adjustable (included W/ assembled arm)	Hughes	3414.2WF-100	TM-111B
13	2	Bent bolt, 7/8" x 6 1/2", W/ recessed nut, locknut	Hughes	2722.2A	
14	1	Bent stud, 7/8" x 10", W/2 recessed nuts, locknuts	Hughes	2722.2B	
15	4	Machine bolt, 7/8" x 14"	Hughes	B814-6	
16	2	Grid gain 4" x 4", 15/16" hole	Hughes	1263-A	
17	2	Washer, curved, 4" SQ x 1/4", 15/16" hole	Hughes	CW80	
18	2	Deadend tee, 15/16" Holes	Hughes	2817-D	
19	2	Crossarm brace 3 3/8" x 5 3/8"	Hughes	2037BDV144.81	
20	2	Adjustable tension brace W/ turnbuckle, 3 3/8" x 4 3/8"	Hughes	2043-A138	
21	2	Twisted clip	Hughes	AS2276-37	

NOTES:

- Double crossarms shall be shipped with factory assembled hardware.
- Pole holes may be field drilled and thoroughly treated with a heavy application of copper naphthanate. Hole diameter to be no more than 1/16" greater than bolt diameter.
- Pole embedment depth will vary to fit sloping grade elevations. See specifications.
- Crossarm brace and tension brace timber lengths and end connection details shall be verified by manufacturer.
- Bolt lengths will vary depending on pole diameter.
- Equivalent manufacturer/catalog no. may be substituted.
- Poles, pole ground and other items specified on staking sheets are separate units.

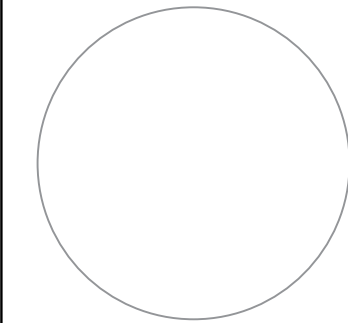
X-BRACE LOCATION FROM CENTERLINE OF CROSSARM

Pole Length	X-Brace Location
65	11'-0"
70	11'-0"
75	11'-0"
80	11'-0"
85	12'-0"
90	14'-0"
95	16'-0"



1 OVERHEAD ELECTRIC TOWER
09.2 SCALE: NTS

WIND/SOLAR ENERGY GENERATION OVERLAY PLAN
PCD EA NUMBER: EA20-134



PROPRIETARY AND CONFIDENTIAL
TO BE REPRODUCED IN COLOR
PRINT SIZE: ARCH D
ISSUED BY: JH
JOB #: C0485
SCALE: NTS
DWG #:

09.2

DWG TITLE:
SITE PLAN
ELEVATIONS

juwi

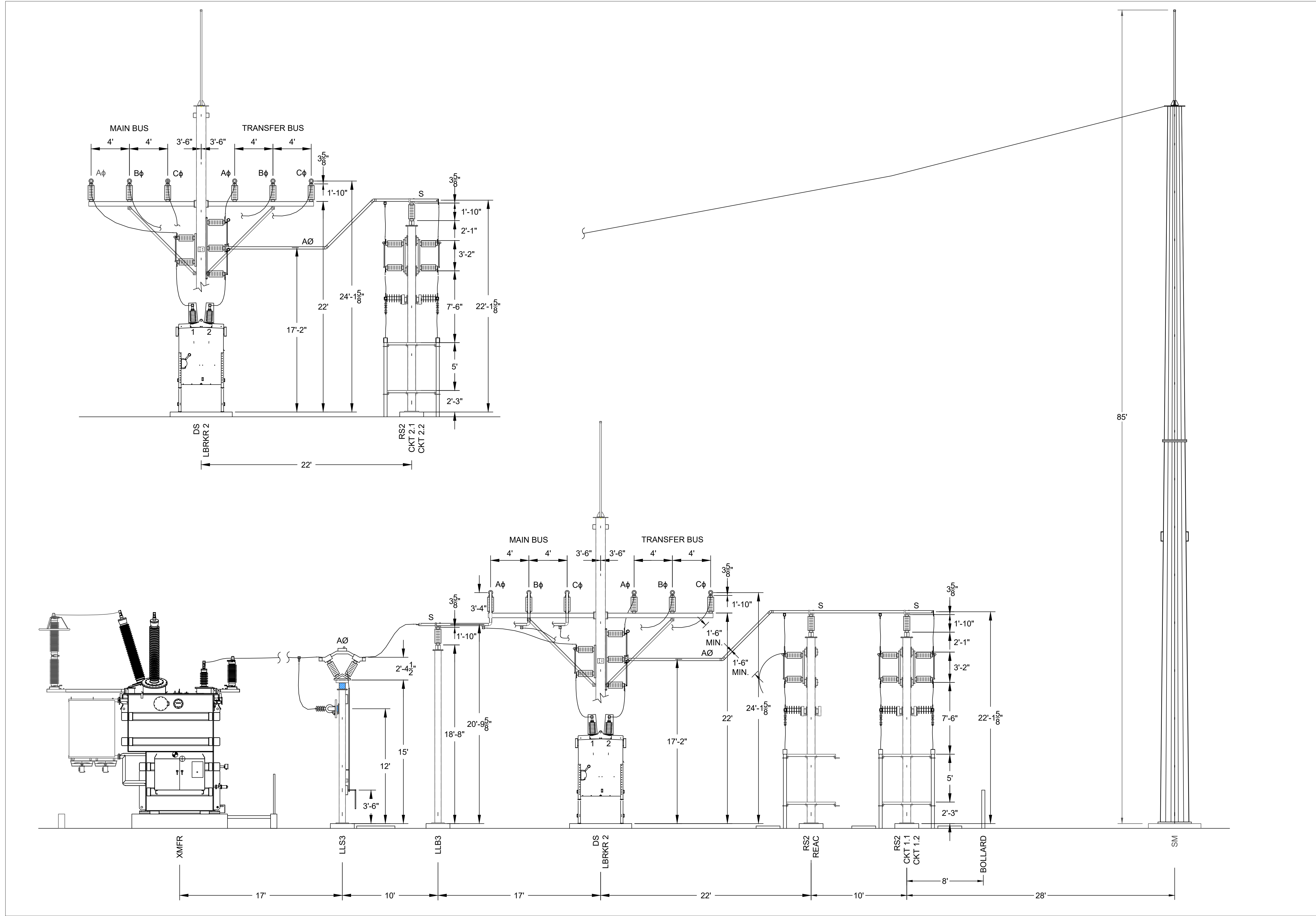
juwi Inc.
1710 29th St. Suite 1068
Boulder, CO 80501
www.juwi-america.com

PIKE SOLAR
219.45 MW PV, 25 MW BESS, 175.00 MW POI
EL PASO COUNTY, CO

REVISION NOTES
REV. NO. DESCRIPTION
1. 09.2.2024 XXX 09.2.2024

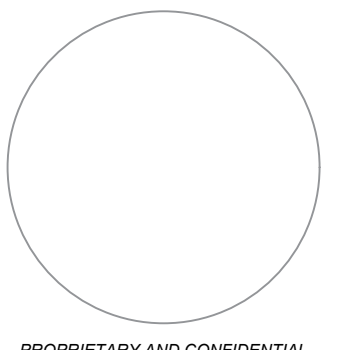
DRAWN BY: DGD
LATEST REV: 0 (SP)

1
2
3
4
5
6
7
8
9
10
11
12
13
14
15
16
17
18
19
20
21



1 SUBSTATION ELEVATIONS
09.3 SCALE: NTS

WIND/SOLAR ENERGY GENERATION OVERLAY PLAN
PCD EA NUMBER: EA20-134



PROPRIETARY AND CONFIDENTIAL
TO BE REPRODUCED IN COLOR
PRINT SIZE: ARCH D
ISSUED BY: JWB
JOB #: 00485
SCALE: NTS
DWG #:

09.3

SITE PLAN
ELEVATIONS

REVISION NOTES

REV. A. 09/12/2021 XXX 09/09/20

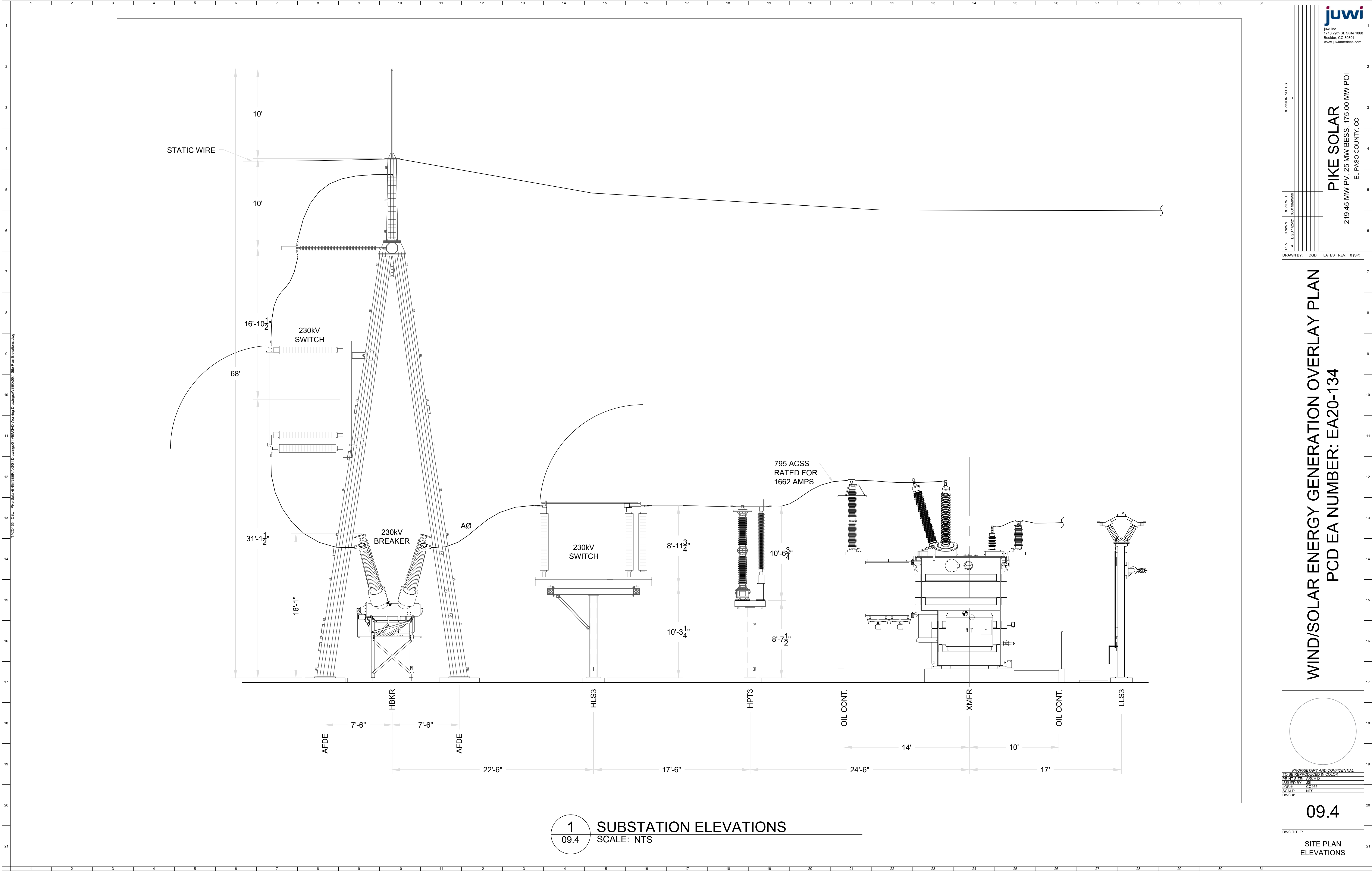
DRAWN BY: DGD

LATEST REV: 0 (SP)



Juwil Inc.
1710 29th St. Suite 1068
Boulder, CO 80301
www.juwilamerica.com

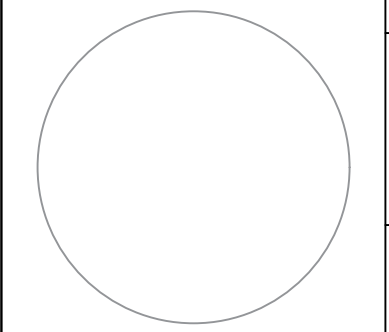
PIKE SOLAR
219.45 MW PV, 25 MW BESS, 175.00 MW POI
EL PASO COUNTY, CO



juwi
juwi Inc.
1710 29th St. Suite 1068
Boulder, CO 80301
www.juwinerica.com

PIKE SOLAR
219.45 MW PV, 25 MW BESS, 175.00 MW POI
EL PASO COUNTY, CO

WIND/SOLAR ENERGY GENERATION OVERLAY PLAN
PCD EA NUMBER: EA20-134



PROPRIETARY AND CONFIDENTIAL
TO BE REPRODUCED IN COLOR
PRINT SIZE: ARCH D
ISSUED BY: JWI
JOB #: 00485
SCALE: NTS
DWG #:

09.4

SITE PLAN
ELEVATIONS