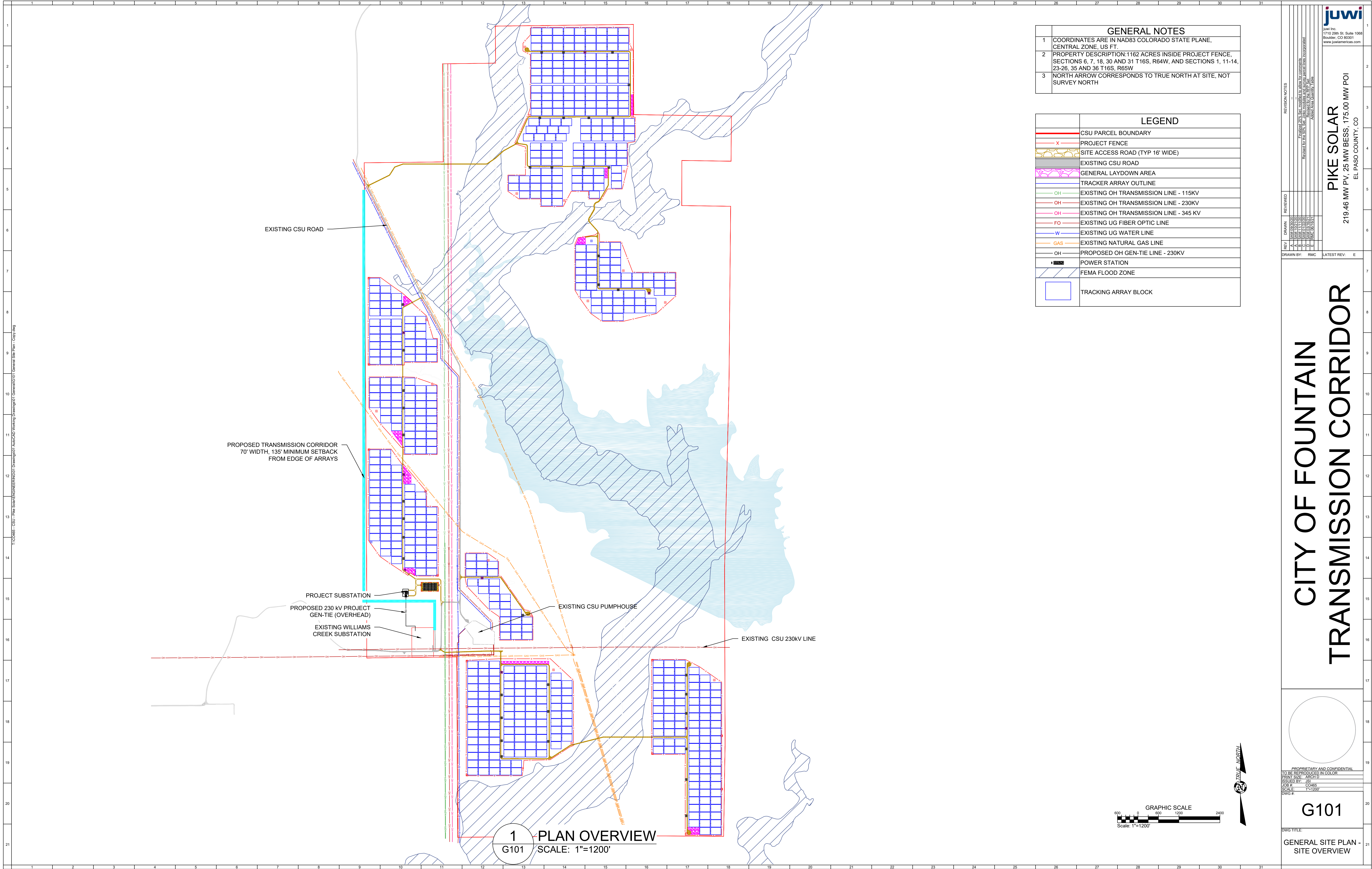


PIKE SOLAR LLC



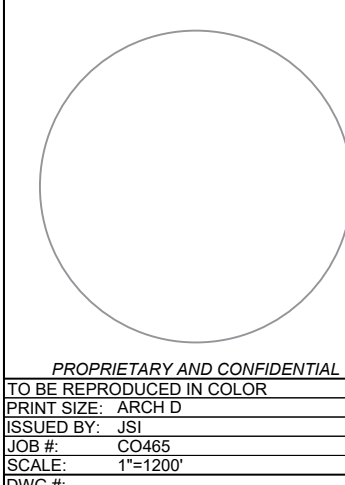
Appendix AM- Proposed Fountain Easement Route &
Fountain Correspondence



GENERAL NOTES	
1	COORDINATES ARE IN NAD83 COLORADO STATE PLANE, CENTRAL ZONE, US FT.
2	PROPERTY DESCRIPTION: 1162 ACRES INSIDE PROJECT FENCE, SECTIONS 6, 7, 18, 30 AND 31 T16S, R64W, AND SECTIONS 1, 11-14, 23-26, 35 AND 36 T16S, R65W
3	NORTH ARROW CORRESPONDS TO TRUE NORTH AT SITE, NOT SURVEY NORTH

LEGEND	
	CSU PARCEL BOUNDARY
	PROJECT FENCE
	SITE ACCESS ROAD (TYP 16' WIDE)
	EXISTING CSU ROAD
	GENERAL LAYDOWN AREA
	TRACKER ARRAY OUTLINE
	EXISTING OH TRANSMISSION LINE - 115KV
	EXISTING OH TRANSMISSION LINE - 230KV
	EXISTING OH TRANSMISSION LINE - 345 KV
	EXISTING UG FIBER OPTIC LINE
	EXISTING UG WATER LINE
	EXISTING NATURAL GAS LINE
	PROPOSED OH GEN-TIE LINE - 230KV
	POWER STATION
	FEMA FLOOD ZONE
	TRACKING ARRAY BLOCK

CITY OF FOUNTAIN TRANSMISSION CORRIDOR



PROPRIETARY AND CONFIDENTIAL
TO BE REPRODUCED IN COLOR
PRINT SIZE: ARCH D
ISSUED BY: JBL
DATE: 02-06-2025
SCALE: 1"=1200'
DWG #

G101

DWG TITLE:
GENERAL SITE PLAN -
SITE OVERVIEW

REV

DRAWN

REVIEWED

A

B

C

D

E

SAVING

SAVING

SAVING

SAVING

SAVING

1710 29th St, Suite 1008

Boulder, CO 80301

www.juwiamerica.com

PIKE SOLAR

219.46 MW PV, 25 MW BESS, 175.00 MW POI

EL PASO COUNTY, CO

juwi

1710 29th St, Suite 1008

Boulder, CO 80301

www.juwiamerica.com

Sophie Kiepe

From: Brian Vickers
Sent: Wednesday, August 4, 2021 2:25 PM
To: Sophie Kiepe; Bryan Lohoff
Subject: FW: Follow up on 7/21 Lower Williams Creek - Fountain Transmission Line Call

Hello Sophie and Bryan,

The City of Fountain mentioned this proposed Fountain Transmission Line as a comment on the Pike Solar 1041 application. Now that we have provided them with a proposed route, are we able to close out that comment. Or did Claire already address the comment?

Brian Vickers, PMP

Project Manager

juwi Inc. • 1710 29th Street, Suite 1068 • Boulder, Colorado 80301 • USA
+1.720.838.2302 • fax. +1.303.442.1981

bvickers@juwiamericas.com • www.juwiamericas.com

juwi • Energy is here

Pronouns: He/Him/His ([what's this?](#))

This communication may contain privileged or confidential information. If you are not the intended recipient(s), you are hereby notified that you have received this message in error and that any review, dissemination, distribution or copying of this message is strictly prohibited. Any views or opinions presented are solely those of the author and do not necessarily represent those of juwi Inc. or its affiliates. If you have received this communication in error, please notify us immediately by email, and delete the original and any copies of the message. We do not waive confidentiality if you have received this communication in error.

From: Carl Christian <carl@fountaincolorado.org>
Sent: Wednesday, August 4, 2021 9:24 AM
To: Brian Vickers <bvickers@juwiamericas.com>; Tracy R. Tillman <TTillman@fountaincolorado.org>
Cc: Jessica Davis <jedavis@csu.org>; Warren Seese (wseese@csu.org) <wseese@csu.org>; Bryan Lohoff <blohoff@juwiamericas.com>; Sophie Kiepe <skiepe@juwiamericas.com>
Subject: RE: Follow up on 7/21 Lower Williams Creek - Fountain Transmission Line Call

Brian, thank you for this...

Respectfully,

Carl Christian
Deputy Utility Director
City of Fountain | 700 S. Charter Oak Ranch Rd. Fountain, CO 80817
www.fountaincolorado.org
office (719) 322-2092 | fax (719) 391-0463



[Facebook](#) | [Twitter](#) | [YouTube](#)

From: Brian Vickers [<mailto:bvickers@juwiamericas.com>]
Sent: Wednesday, August 4, 2021 8:18 AM
To: Carl Christian <carl@fountaincolorado.org>; Tracy R. Tillman <TTillman@fountaincolorado.org>
Cc: Jessica Davis <jedavis@csu.org>; Warren Seese (wseese@csu.org) <wseese@csu.org>; Bryan Lohoff <blohoff@juwiamericas.com>; Sophie Kiepe <skiepe@juwiamericas.com>
Subject: RE: Follow up on 7/21 Lower Williams Creek - Fountain Transmission Line Call

Caution:

This email originated from outside the City of Fountain network. Do not click links or open attachments unless you recognize the sender and know the content is safe. Never provide your network username and password requested via email. Please call the IT Help Desk at 322-2085 if you are unsure of the integrity of this message.

- Helpdesk

Hello Carl and Tracy,

CSU management and Real Estate have given the thumbs up on the proposed City of Fountain transmission line route shown in the attached. Of course, the caveat is that City of Fountain would need to make sure to stay within the requirements of all interested parties and provided there is enough space for their easement and transmission line in the proposed new route.

The proposed route is shown in a light turquoise color and runs north from the Williams Creek Substation then turns 90 deg to the west and then 90 deg to the north to continue to the west of the Pike Solar arrays. The two crossings of planned Pike Solar infrastructure include:

1. A planned overhead gen-tie line between the Pike project substation and the Williams Creek Substation. Because the City of Fountain is planning to install a 115 kV transformer near the Williams Creek substation, it is anticipated that the City of Fountain 115 kV line would pass underneath the planned overhead gen-tie line.
2. A planned underground Mountain View Electric Association (MVEA) station service line that will run from the south to the north to provide station service to the Pike Solar project substation.

The City of Fountain will likely want to refine the northern extent of the proposed route to align with the City of Fountain's planned substation west of the Fountain landfill.

Brian Vickers, PMP

Project Manager

juwi Inc. • 1710 29th Street, Suite 1068 • Boulder, Colorado 80301 • USA
+1.720.838.2302 • fax. +1.303.442.1981
bvickers@juwiamericas.com • www.juwiamericas.com
juwi • Energy is here

Pronouns: He/Him/His ([what's this?](#))

This communication may contain privileged or confidential information. If you are not the intended recipient(s), you are hereby notified that you have received this message in error and that any review, dissemination, distribution or copying of this message is strictly prohibited. Any views or opinions presented are solely those of the author and do not necessarily represent those of juwi Inc. or its affiliates. If you have received this communication in error, please notify us immediately by email, and delete the original and any copies of the message. We do not waive confidentiality if you have received this communication in error.

From: Brian Vickers
Sent: Friday, July 30, 2021 3:39 PM
To: Carl Christian <carl@fountaincolorado.org>; Tracy R. Tillman <TTillman@fountaincolorado.org>
Cc: Jessica Davis <jedavis@csu.org>; Warren Seese (wseese@csu.org) <wseese@csu.org>; Bryan Lohoff

<blohoff@juwiamericas.com>; Sophie Kiepe <skiepe@juwiamericas.com>

Subject: RE: Follow up on 7/21 Lower Williams Creek - Fountain Transmission Line Call

Hello Carl and Tracy,

We have shared a potential route with CSU to solicit their feedback. After we have had a chance to get CSU's input, we will ready to share a route with City of Fountain.

Brian Vickers, PMP

Project Manager

juwi Inc. • 1710 29th Street, Suite 1068 • Boulder, Colorado 80301 • USA
+1.720.838.2302 • fax. +1.303.442.1981

bvickers@juwiamericas.com • www.juwiamericas.com

juwi • Energy is here

Pronouns: He/Him/His ([what's this?](#))

This communication may contain privileged or confidential information. If you are not the intended recipient(s), you are hereby notified that you have received this message in error and that any review, dissemination, distribution or copying of this message is strictly prohibited. Any views or opinions presented are solely those of the author and do not necessarily represent those of juwi Inc. or its affiliates. If you have received this communication in error, please notify us immediately by email, and delete the original and any copies of the message. We do not waive confidentiality if you have received this communication in error.

From: Carl Christian <carl@fountaincolorado.org>

Sent: Wednesday, July 21, 2021 12:00 PM

To: Brian Vickers <bvickers@juwiamericas.com>; Tracy R. Tillman <TTillman@fountaincolorado.org>

Cc: Jessica Davis <jedavis@csu.org>; Warren Seese (wseese@csu.org) <wseese@csu.org>; Bryan Lohoff <blohoff@juwiamericas.com>; Sophie Kiepe <skiepe@juwiamericas.com>

Subject: RE: Follow up on 7/21 Lower Williams Creek - Fountain Transmission Line Call

Brian, great talking with you. I appreciate the turn around on this request..

Respectfully,

Carl Christian

Deputy Utility Director

City of Fountain | 700 S. Charter Oak Ranch Rd. Fountain, CO 80817

www.fountaincolorado.org

office (719) 322-2092 | fax (719) 391-0463



[Facebook](#) | [Twitter](#) | [YouTube](#)

To Strengthen & Support Our Community

From: Brian Vickers [<mailto:bvickers@juwiamericas.com>]

Sent: Wednesday, July 21, 2021 11:41 AM

To: Carl Christian <carl@fountaincolorado.org>; Tracy R. Tillman <TTillman@fountaincolorado.org>

Cc: Jessica Davis <jedavis@csu.org>; Warren Seese (wseese@csu.org) <wseese@csu.org>; Bryan Lohoff

<blohoff@juwiamericas.com>; Sophie Kiepe <skiepe@juwiamericas.com>

Subject: Follow up on 7/21 Lower Williams Creek - Fountain Transmission Line Call

Caution:

This email originated from outside the City of Fountain network. Do not click links or open attachments unless you recognize the sender and know the content is safe. Never provide your network username and password requested via email. Please call the IT Help Desk at 322-2085 if you are unsure of the integrity of this message.

- Helpdesk

Hello Carl and Tracy,

I appreciated meeting you both virtually this morning. I spoke with the Pike Solar project engineer and confirmed that we could send a proposed alignment with 70 ft easement for the Fountain Transmission line by Friday, 7/30.

Brian Vickers, PMP

Project Manager

juwi Inc. • 1710 29th Street, Suite 1068 • Boulder, Colorado 80301 • USA

+1.720.838.2302 • fax. +1.303.442.1981

bvickers@juwiamericas.com • www.juwiamericas.com

juwi • Energy is here

Pronouns: He/Him/His ([what's this?](#))

This communication may contain privileged or confidential information. If you are not the intended recipient(s), you are hereby notified that you have received this message in error and that any review, dissemination, distribution or copying of this message is strictly prohibited. Any views or opinions presented are solely those of the author and do not necessarily represent those of juwi Inc. or its affiliates. If you have received this communication in error, please notify us immediately by email, and delete the original and any copies of the message. We do not waive confidentiality if you have received this communication in error.