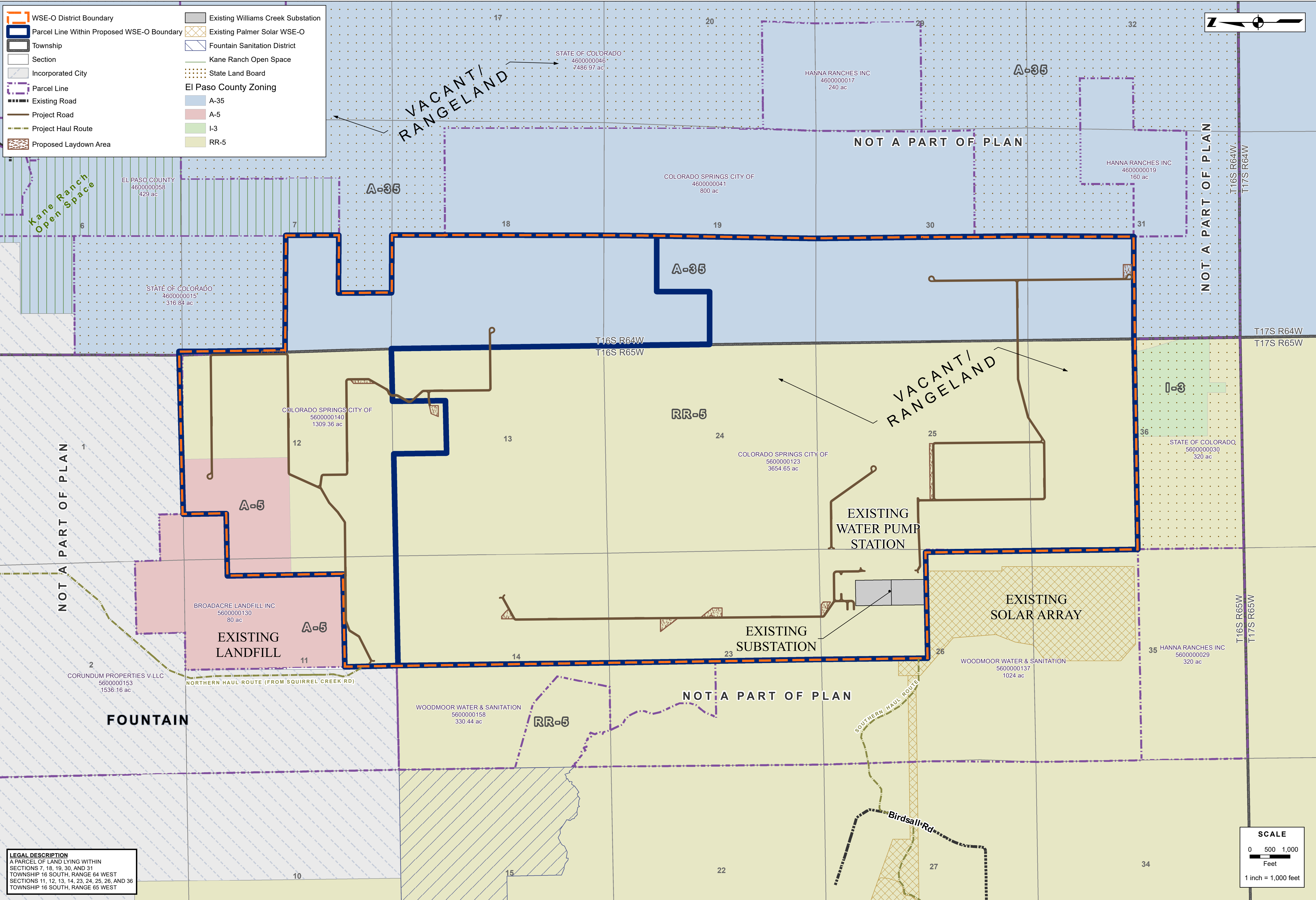
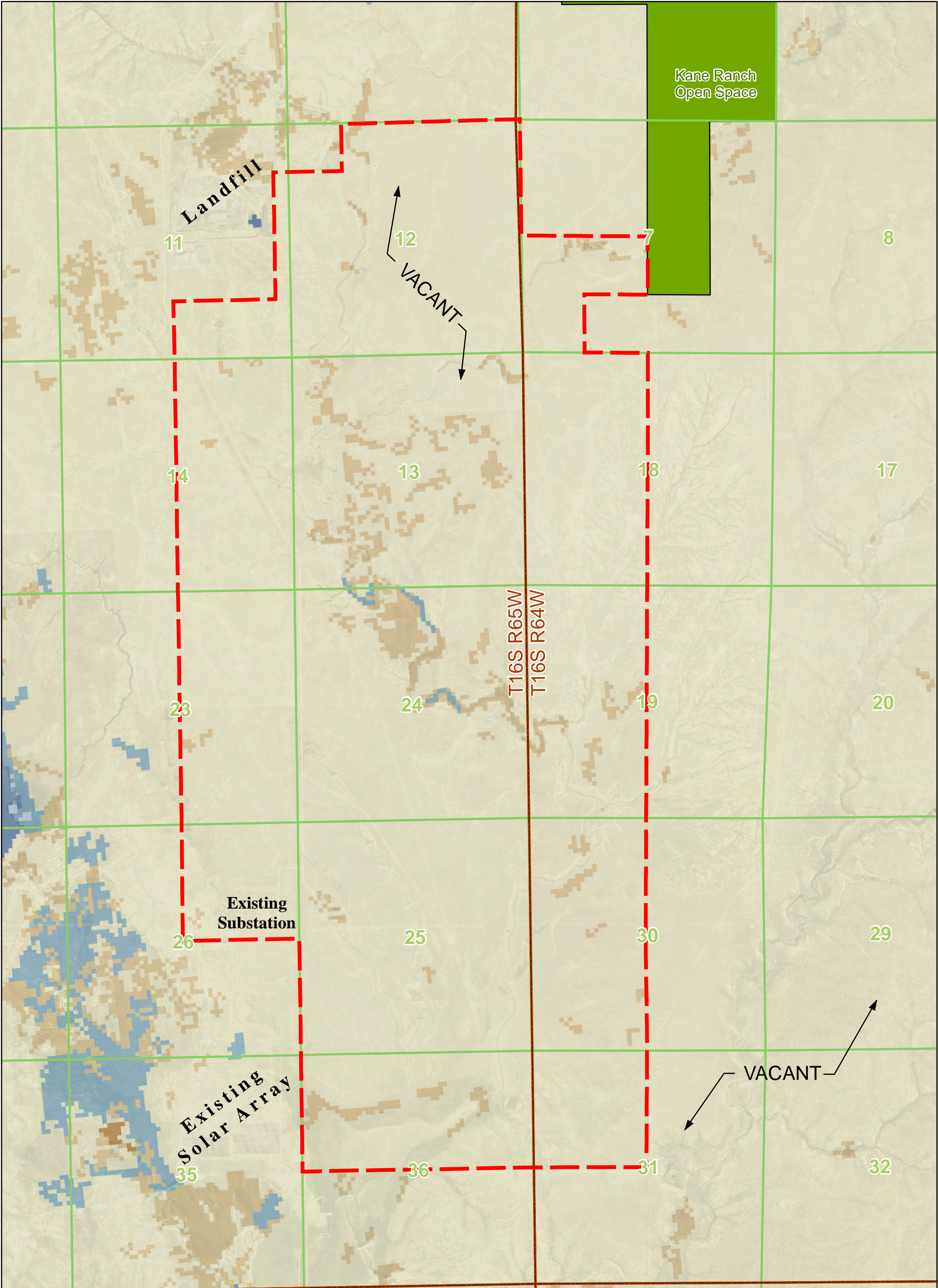


PIKE SOLAR LLC



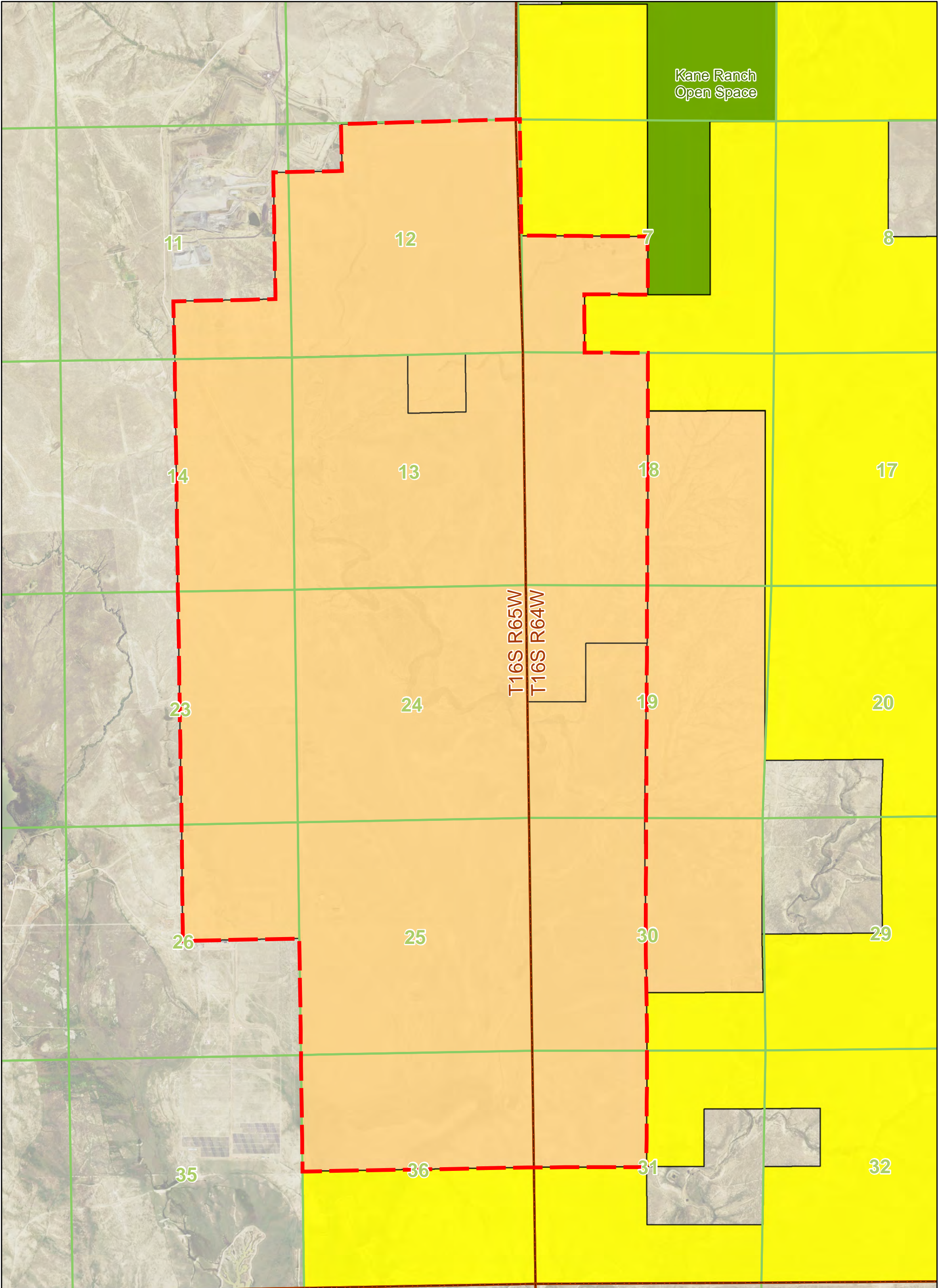
Appendix P- Zoning Map





<h1>Pike Solar Project</h1> <h2>Land Use / Land Cover Map</h2> <p>El Paso County, Colorado</p>	<div><div><div><div><div></div><div>Proposed Pike Solar WSE-O Overlay</div></div><div><div></div><div>Township</div></div><div><div></div><div>Section</div></div><div><div></div><div>Kane Ranch Open Space</div></div></div><div><div>Land Use / Land Cover<div><div></div><div>Open Water</div></div><div><div></div><div>Shrub/Scrub</div></div><div><div></div><div>Grassland/Herbaceous</div></div><div><div></div><div>Emergent Herbaceous Wetlands</div></div></div></div></div></div>	<div><div><div>02,000</div><div>Feet</div></div><div></div></div>
	<div>Project #: 20-194 Date: 2/8/2022</div> <div><div><div>CORE</div><div>LAND DEVELOPMENT ENERGY PUBLIC INFRASTRUCTURE</div></div></div>	







Reference: USGS National Land Cover Database 2016



Pike Solar Project

Public Lands Map

El Paso County, Colorado

-  Proposed Pike Solar WSE-O Overlay
-  Township
-  Section
-  City of Colorado Springs Parcel
-  State Land Board
-  Kane Ranch Open Space

Reference: El Paso County GIS Data 2020



Project #: 20-194
Date: 2/8/2022

