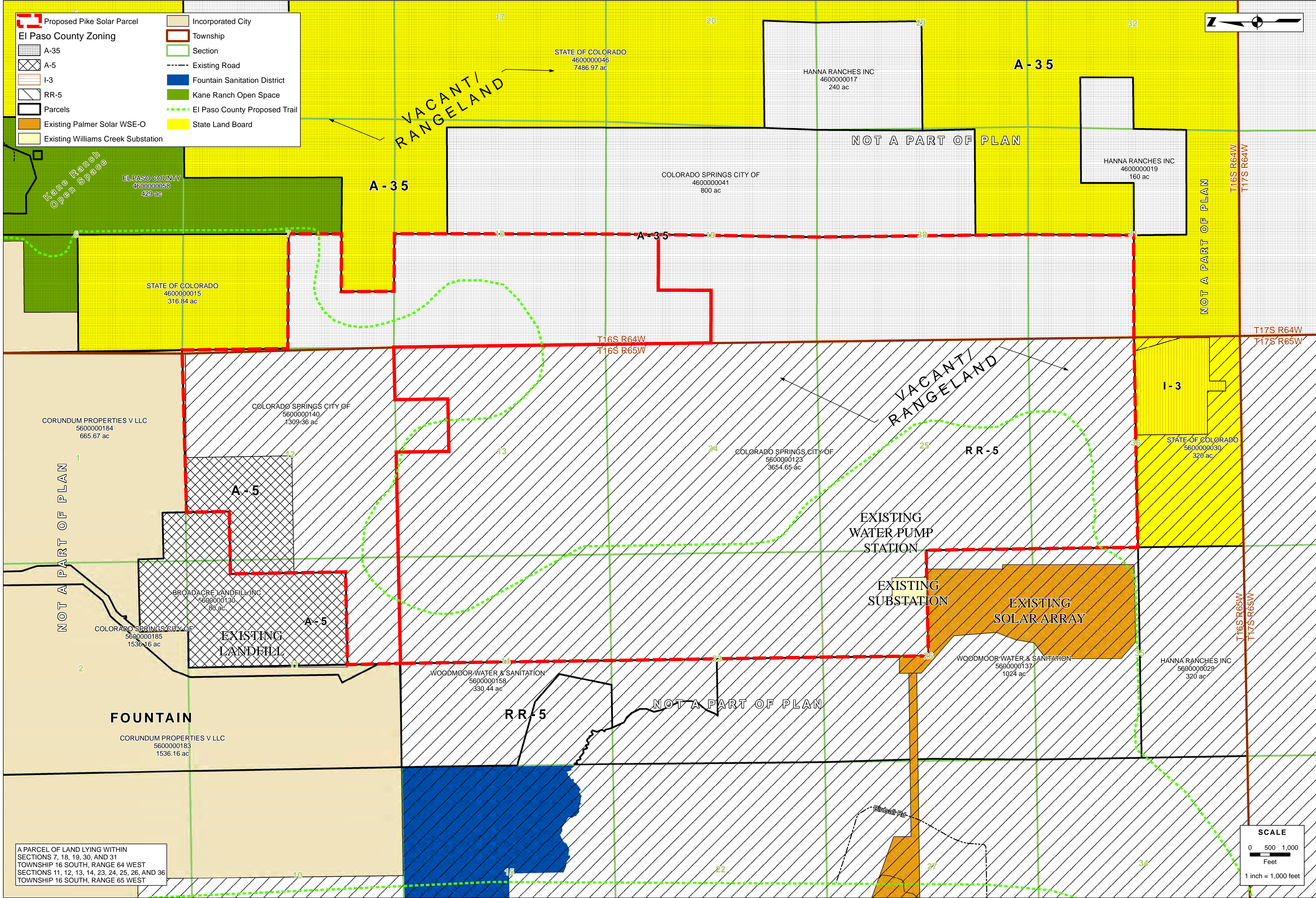


PIKE SOLAR LLC



Appendix P- Zoning Map



A PARCEL OF LAND LYING WITHIN SECTIONS 7, 18, 19, 30, AND 31 TOWNSHIP 16 SOUTH, RANGE 64 WEST SECTIONS 11, 12, 13, 14, 23, 24, 25, 26, AND 36 TOWNSHIP 16 SOUTH, RANGE 65 WEST

PIKE SOLAR PROJECT
COMPLIANCE PLAN
ZONING AND LAND USE OVERLAY
EL PASO COUNTY, COLORADO

DESIGNED BY:
DRAWN BY:
CHECKED BY:
JOB NO.
SHEET OF

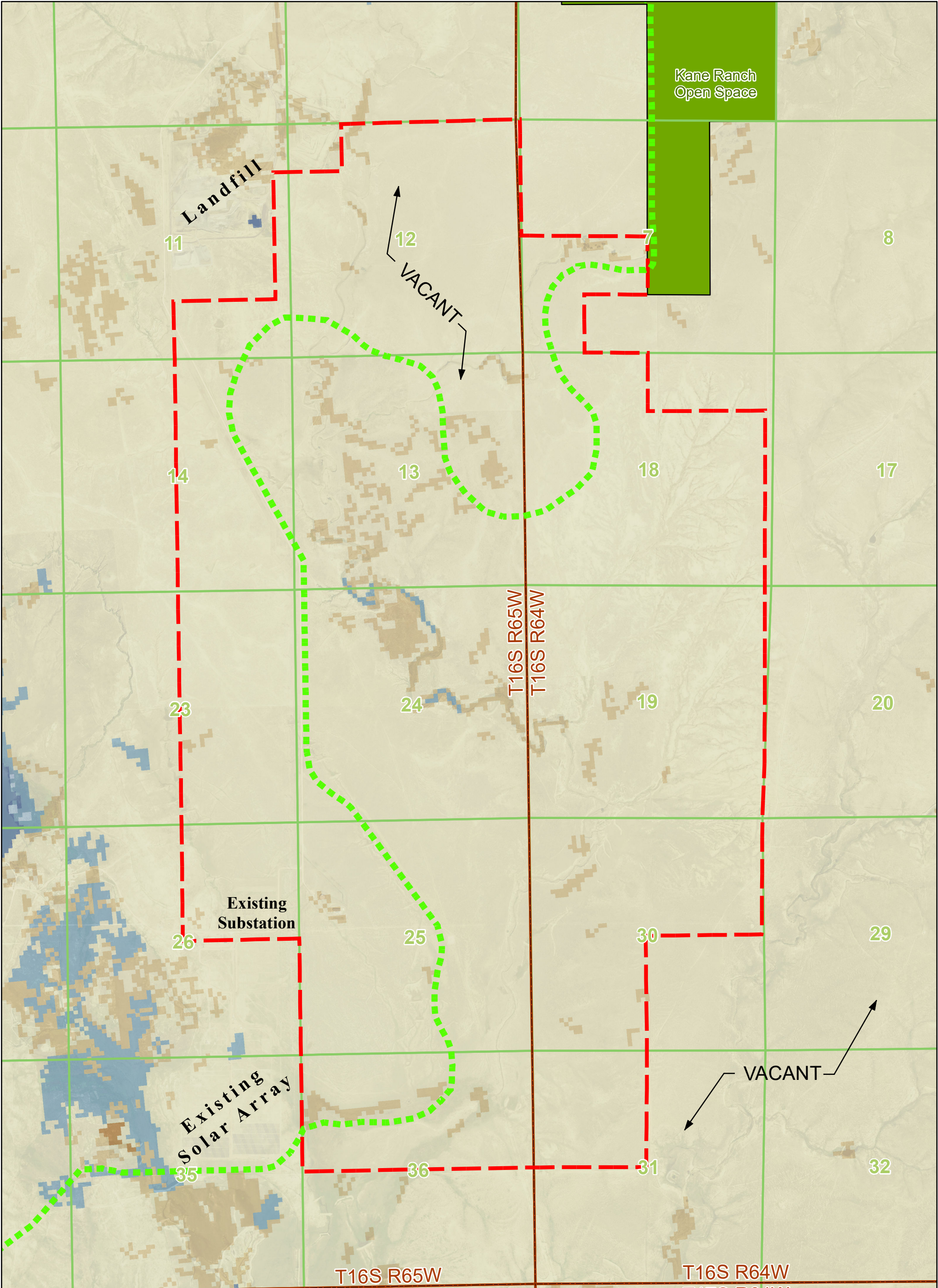
CALL 2-BUSINESS DAYS IN ADVANCE BEFORE YOU DIG. GRAB THE LOCATION OF ANY UNDERGROUND UTILITY. CORE ASSUMES NO RESPONSIBILITY FOR ANY UTILITY LOCATIONS (HORIZONTAL AND VERTICAL). THE EXISTING LOCATIONS (HORIZONTAL AND VERTICAL) INFORMATION IS PROVIDED FOR THE BEST AVAILABLE INFORMATION. IT IS, HOWEVER, THE RESPONSIBILITY OF THE CONTRACTOR TO VERIFY THE LOCATION OF ANY UTILITY BEFORE THE COMMENCEMENT OF ANY CONSTRUCTION ACTIVITIES.

811

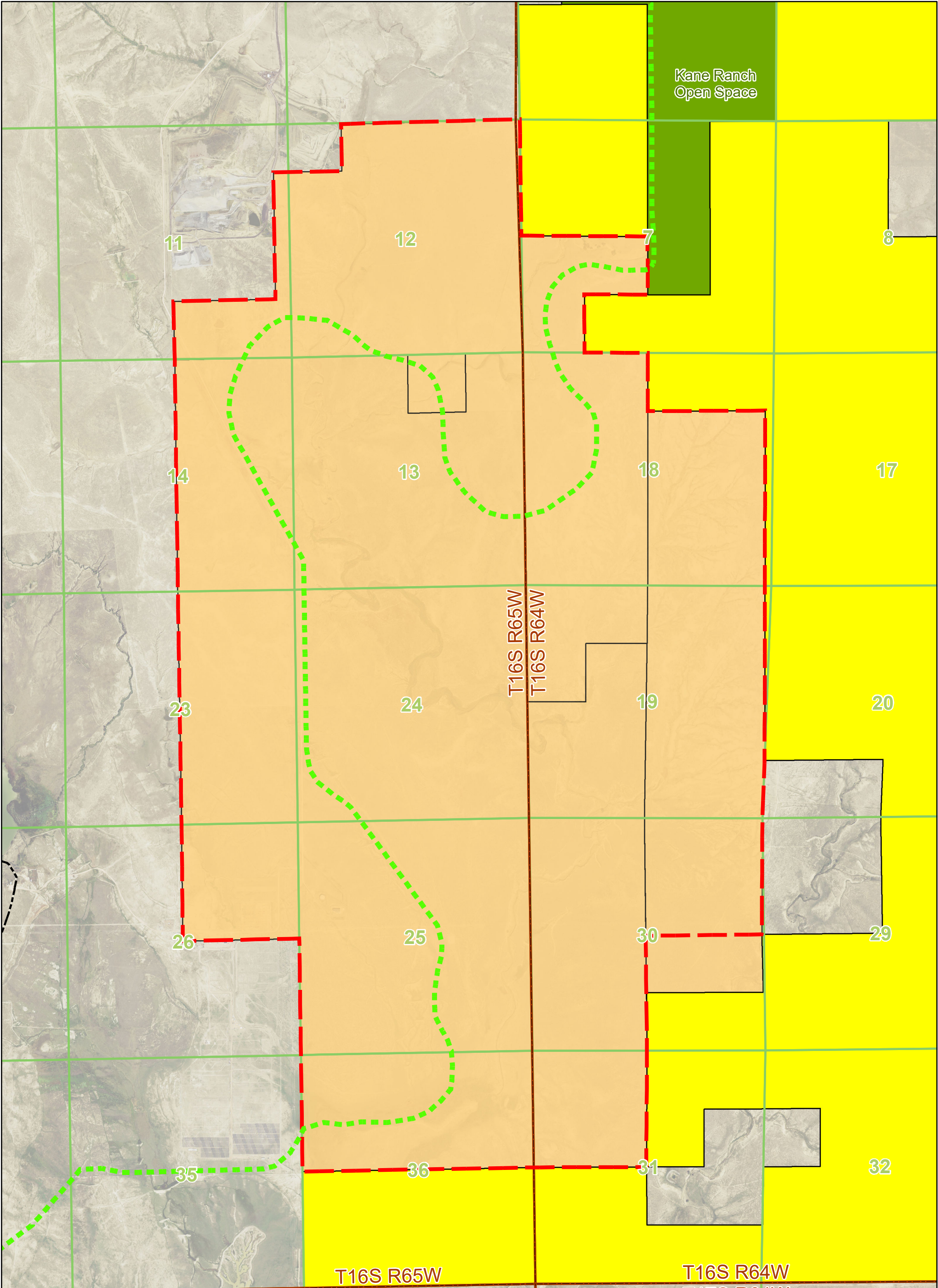
LAND DEVELOPMENT
ENERGY
PUBLIC INFRASTRUCTURE

CORE

3472 S. BROADWAY
ENGLEWOOD, CO 80113
303.703.4444



<p>Pike Solar Project</p> <p>Land Use / Land Cover Map</p> <p>El Paso County, Colorado</p>	<table><tr><td></td><td>Proposed Pike Solar WSE-O Overlay</td><td>Land Use / Land Cover</td></tr><tr><td></td><td>Township</td><td> Open Water</td></tr><tr><td></td><td>Section</td><td> Shrub/Scrub</td></tr><tr><td></td><td>Kane Ranch Open Space</td><td> Grassland/Herbaceous</td></tr><tr><td></td><td>El Paso County Proposed Trail</td><td> Emergent Herbaceous Wetlands</td></tr></table> <p>Reference: USGS National Land Cover Database 2016</p>		Proposed Pike Solar WSE-O Overlay	Land Use / Land Cover		Township	Open Water		Section	Shrub/Scrub		Kane Ranch Open Space	Grassland/Herbaceous		El Paso County Proposed Trail	Emergent Herbaceous Wetlands	<table><tr><td></td><td></td></tr><tr><td colspan="2">Project #: 20-194 Date: 4/20/2021</td></tr><tr><td colspan="2"></td></tr></table>			Project #: 20-194 Date: 4/20/2021			
	Proposed Pike Solar WSE-O Overlay	Land Use / Land Cover																					
	Township	Open Water																					
	Section	Shrub/Scrub																					
	Kane Ranch Open Space	Grassland/Herbaceous																					
	El Paso County Proposed Trail	Emergent Herbaceous Wetlands																					
Project #: 20-194 Date: 4/20/2021																							



<div><h1>Pike Solar Project</h1><h2>Public Lands Map</h2><p>El Paso County, Colorado</p></div>	<div><div><div><div></div></div><div>Proposed Pike Solar WSE-O Overlay</div></div><div><div><div></div></div><div>Township</div></div><div><div><div></div></div><div>Section</div></div></div> <div><div><div></div></div><div>City of Colorado Springs Parcel</div></div> <div><div><div></div></div><div>State Land Board</div></div> <div><div><div></div></div><div>Kane Ranch Open Space</div></div> <div><div><div></div></div><div>El Paso County Proposed Trail</div></div>
--	--

Project #: 20-194
Date: 4/20/2021