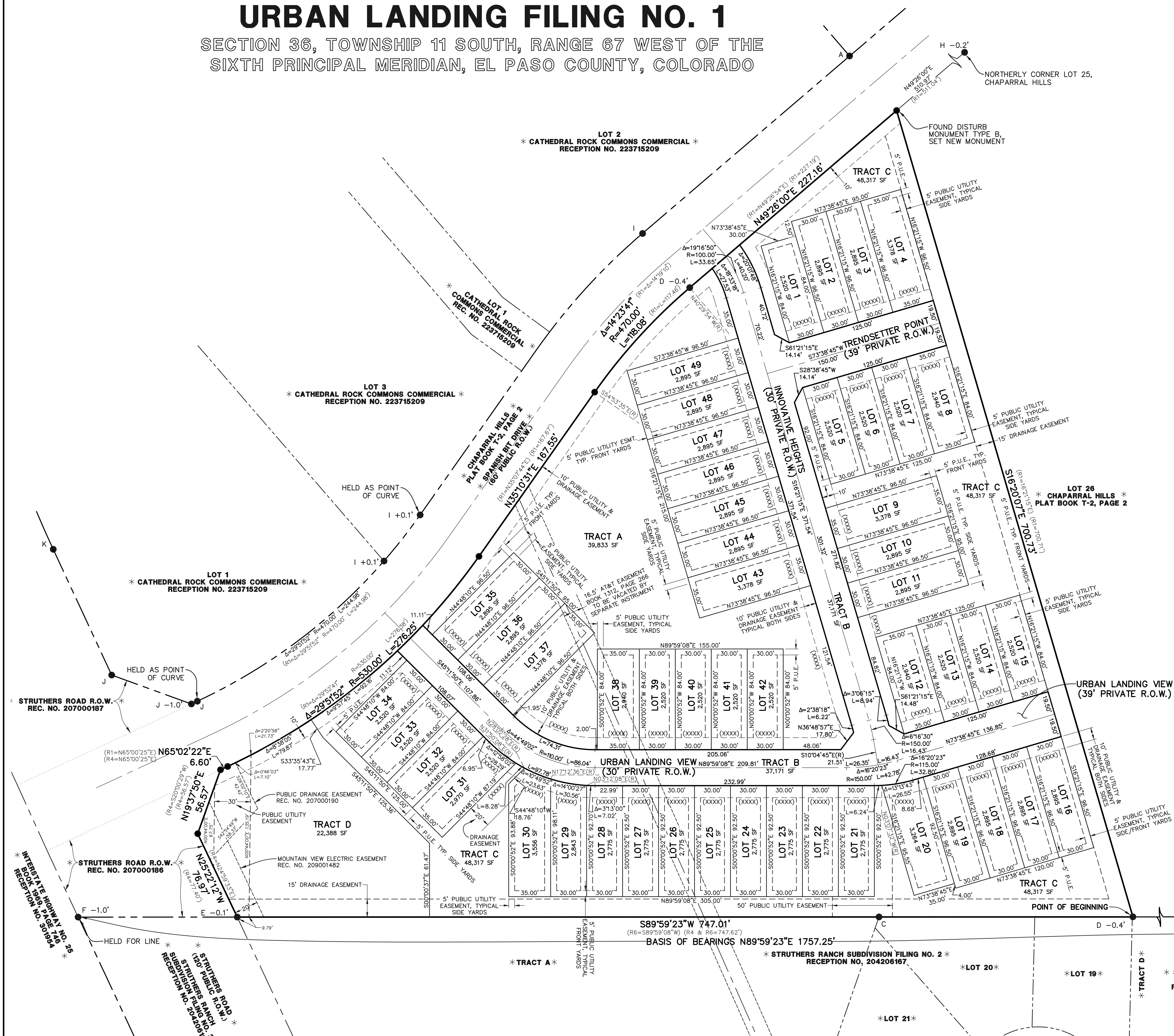




# FINAL PLAT

## URBAN LANDING FILING NO. 1

SECTION 36, TOWNSHIP 11 SOUTH, RANGE 67 WEST OF THE  
SIXTH PRINCIPAL MERIDIAN, EL PASO COUNTY, COLORADO



- ### MONUMENT LEGEND
- A. INDICATES REFERENCE TO A FOUND NUMBER 4 REBAR (NO CAP), FOUND FLUSH WITH GRADE UNLESS OTHERWISE NOTED BY A + OR - DISTANCE FOLLOWING THE LETTER.
  - B. INDICATES REFERENCE TO A FOUND NUMBER 5 REBAR WITH 1.25 INCH ILLEGIBLE YELLOW CAP, FOUND FLUSH WITH GRADE UNLESS OTHERWISE NOTED BY A + OR - DISTANCE FOLLOWING THE LETTER.
  - C. INDICATES REFERENCE TO A FOUND NUMBER 5 REBAR WITH A 1.25 INCH ORANGE PLASTIC CAP STAMPED BY 26965, FOUND FLUSH WITH GRADE UNLESS OTHERWISE NOTED BY A + OR - DISTANCE FOLLOWING THE LETTER.
  - D. INDICATES REFERENCE TO A FOUND NUMBER 5 REBAR WITH A 1.25 INCH YELLOW PLASTIC CAP STAMPED "2372" FOUND FLUSH WITH GRADE UNLESS OTHERWISE NOTED BY A + OR - DISTANCE FOLLOWING THE LETTER.
  - E. INDICATES REFERENCE TO A FOUND NUMBER 5 REBAR WITH A 2 INCH ALUMINUM CAP STAMPED "9853" FOUND FLUSH WITH GRADE UNLESS OTHERWISE NOTED BY A + OR - DISTANCE FOLLOWING THE LETTER.
  - F. INDICATES REFERENCE TO A FOUND NUMBER 5 REBAR WITH 1.5 INCH ILLEGIBLE ALUMINUM CAP FOUND FLUSH WITH GRADE UNLESS OTHERWISE NOTED BY A + OR - DISTANCE FOLLOWING THE LETTER.
  - G. INDICATES REFERENCE TO A FOUND NUMBER 5 REBAR WITH A 1.25 INCH ILLEGIBLE RED PLASTIC CAP, FOUND 1.0' BELOW GRADE.
  - H. INDICATES REFERENCE TO A FOUND NUMBER 5 REBAR (NO CAP), FOUND FLUSH WITH GRADE UNLESS OTHERWISE NOTED BY A + OR - DISTANCE FOLLOWING THE LETTER.
  - I. INDICATES REFERENCE TO A FOUND NUMBER 4 REBAR WITH A 1 INCH RED PLASTIC CAP STAMPED BY "20681", FOUND FLUSH WITH GRADE UNLESS OTHERWISE NOTED BY A + OR - DISTANCE FOLLOWING THE LETTER.
  - J. INDICATES REFERENCE TO A FOUND NUMBER 4 REBAR WITH A 1 INCH YELLOW PLASTIC CAP STAMPED BY "10376", FOUND FLUSH WITH GRADE UNLESS OTHERWISE NOTED BY A + OR - DISTANCE FOLLOWING THE LETTER.
  - K. INDICATES REFERENCE TO A FOUND + ON ELECTRIC VAULT

- ### RECORD REFERENCE LEGEND:
- (RECORDS OF THE EL PASO COUNTY, COLORADO, CLERK AND RECORDER)
- R1= CHAPARRAL HILLS, SUBDIVISION PLAT RECORDED AUGUST 26, 1991 UNDER RECEPTION NO. 000824585, PLAT BOOK T2 AT PAGE 2.
  - R2= STRUTHERS RANCH SUBDIVISION FILING NO. 2 PLAT RECORDED DECEMBER 17, 2004 UNDER RECEPTION NO. 204206167.
  - R3= STRUTHERS RANCH SUBDIVISION FILING NO. 3 PLAT RECORDED DECEMBER 17, 2004 UNDER RECEPTION NO. 204206169.
  - R4= SPECIAL WARRANTY DEED RECORDED JANUARY 1, 2007 UNDER RECEPTION NO. 207000186.
  - R5= CHAPARRAL HILLS 1A, SUBDIVISION PLAT RECORDED FEBRUARY 5, 2009 UNDER RECEPTION NO. 209712920.
  - R6= WARRANTY DEED RECORDED DECEMBER 19, 2023 UNDER RECEPTION NO. 223103173.

- ### LEGEND
- \* NOT PART OF THIS SUBDIVISION
  - (R1=) RECORD DOCUMENT TABLE REFERENCE
  - AC ACRES
  - SQ. FT. SQUARE FEET
  - (XXXX) ADDRESS
  - P.I.E. PUBLIC IMPROVEMENT EASEMENT
  - P.U.E. PUBLIC UTILITIES EASEMENT
  - (R) RADIAL BEARING
  - R.O.W. RIGHT-OF-WAY
  - 1-1/2" ALUMINUM SURVEYORS CAP STAMPED "PLS 34977" TO BE SET FLUSH WITH GRADE
  - A MONUMENT TYPE AS NOTED IN MONUMENT LEGEND
  - A -0.3' INDICATES THE LOCATION OF THE TOP OF THE MONUMENT RELATIVE TO THE EXISTING GRADE OF THE GROUND

