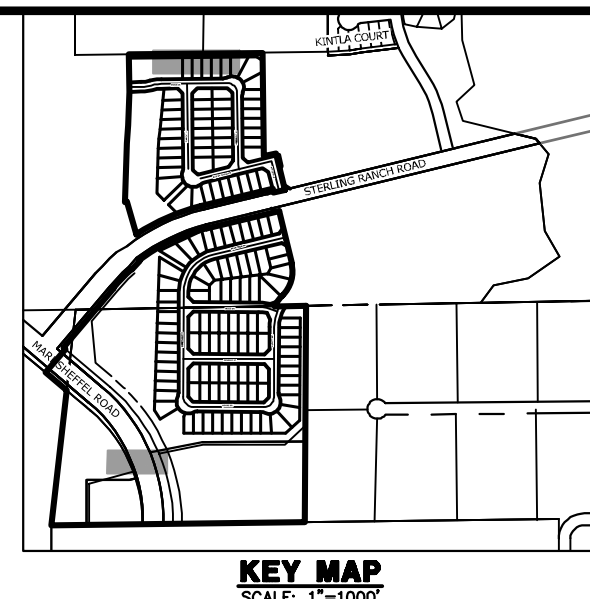
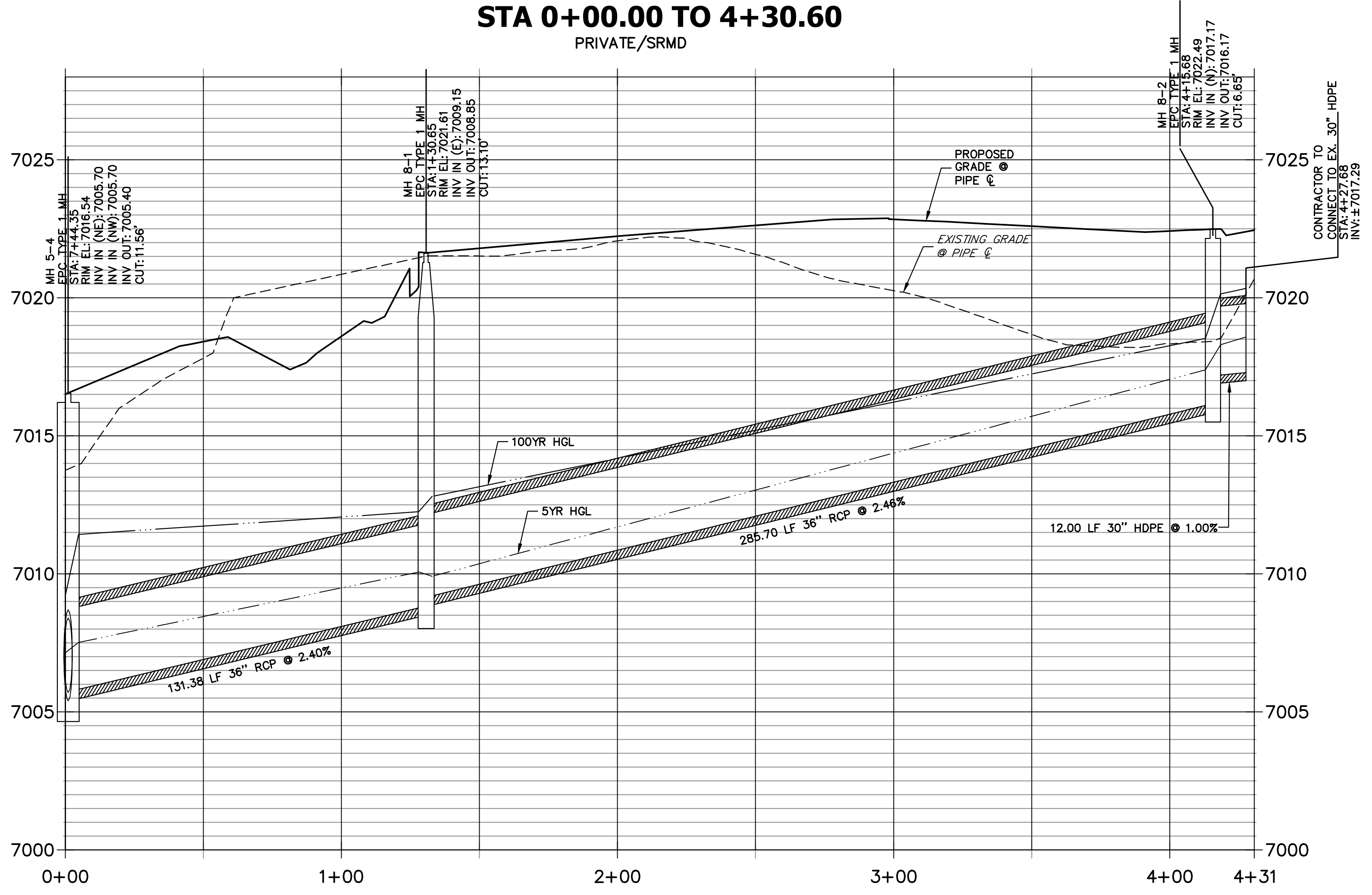


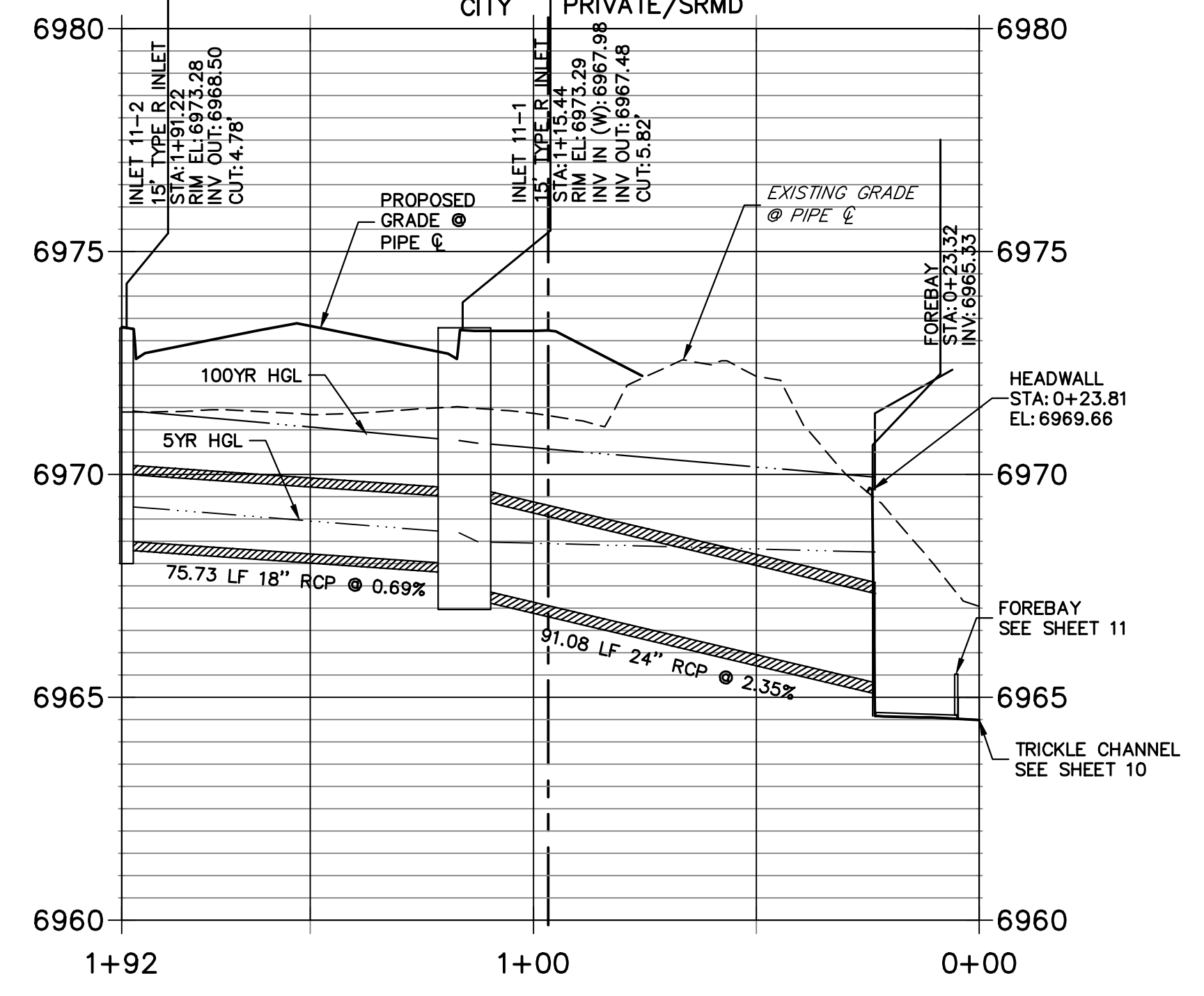
**WARNING**  
**HIGH-PRESSURE PIPELINE(S)**  
 EXCAVATION AND/OR CONSTRUCTION PROHIBITED  
 WITHOUT COMPLIANCE WITH STATE ONE-CALL, AND  
 WITHOUT WRITTEN PERMISSION FROM  
 MAGELLAN PIPELINE COMPANY, L.P.



**DP-08 PROFILE**  
 STA 0+00.00 TO 4+30.60  
 PRIVATE/SRMD

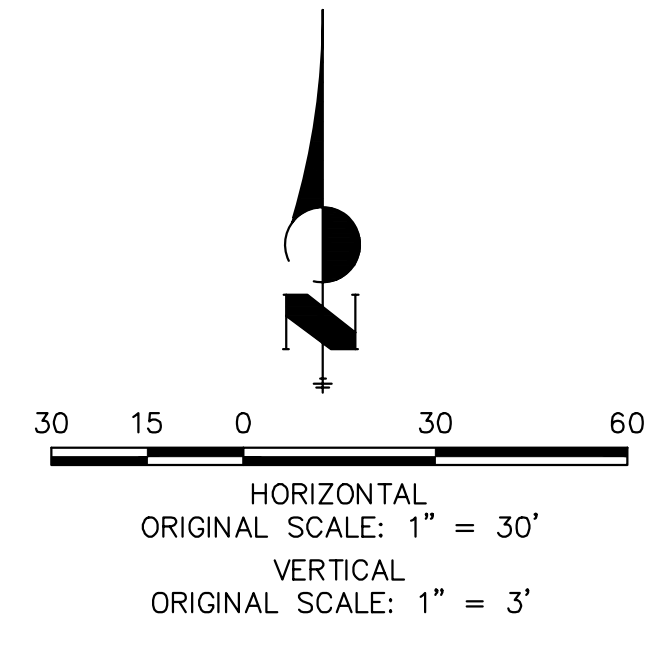


**DP11 PROFILE**  
 STA 0+00.00 TO 1+92.30  
 CITY/PRIVATE/SRMD



THE LOCATIONS OF EXISTING ABOVE GROUND AND UNDERGROUND UTILITIES ARE SHOWN IN AN APPROXIMATE WAY ONLY. THE CONTRACTOR SHALL DETERMINE THE EXACT LOCATION OF ALL EXISTING UTILITIES BEFORE COMMENCING WORK. THE CONTRACTOR SHALL BE FULLY RESPONSIBLE FOR ANY AND ALL DAMAGES WHICH MIGHT BE CAUSED BY HIS FAILURE TO EXACTLY LOCATE AND PRESERVE ANY AND ALL ABOVE GROUND AND UNDERGROUND UTILITIES.

**NOTE:**  
 ADD WATER TIGHT JOINT WHEN 100 YR HGL SHOWS PIPE FULLY INUNDATED



**ENGINEER'S STATEMENT**  
 PREPARED UNDER MY DIRECT SUPERVISION AND ON BEHALF OF JR ENGINEERING  
 Mike Bramlett  
 32314  
 08/14/23  
 MIKE A. BRAMLETT, P.E.  
 COLORADO P.E. 32314  
 FOR AND ON BEHALF OF JR ENGINEERING, A PROFESSIONAL ENGINEERING FIRM

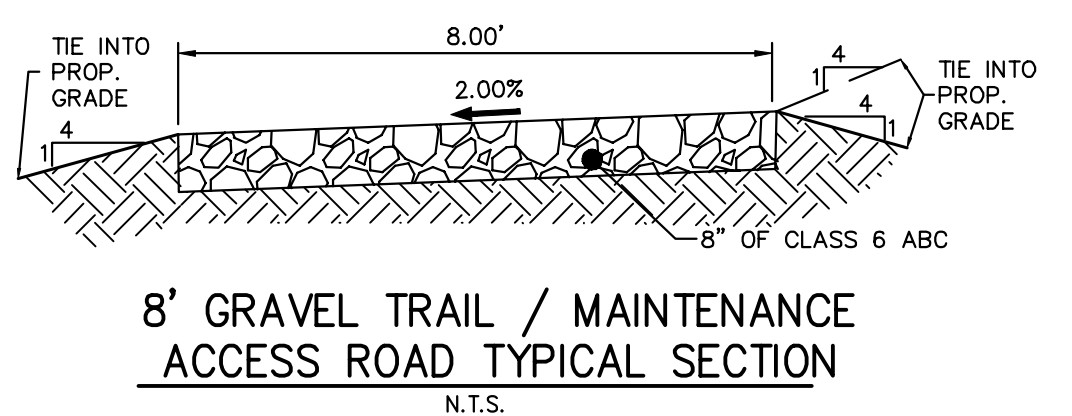
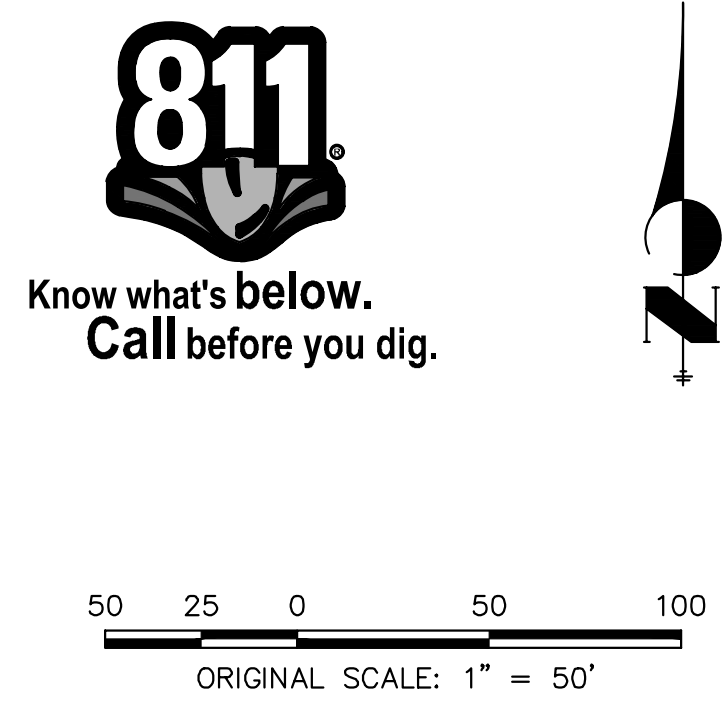
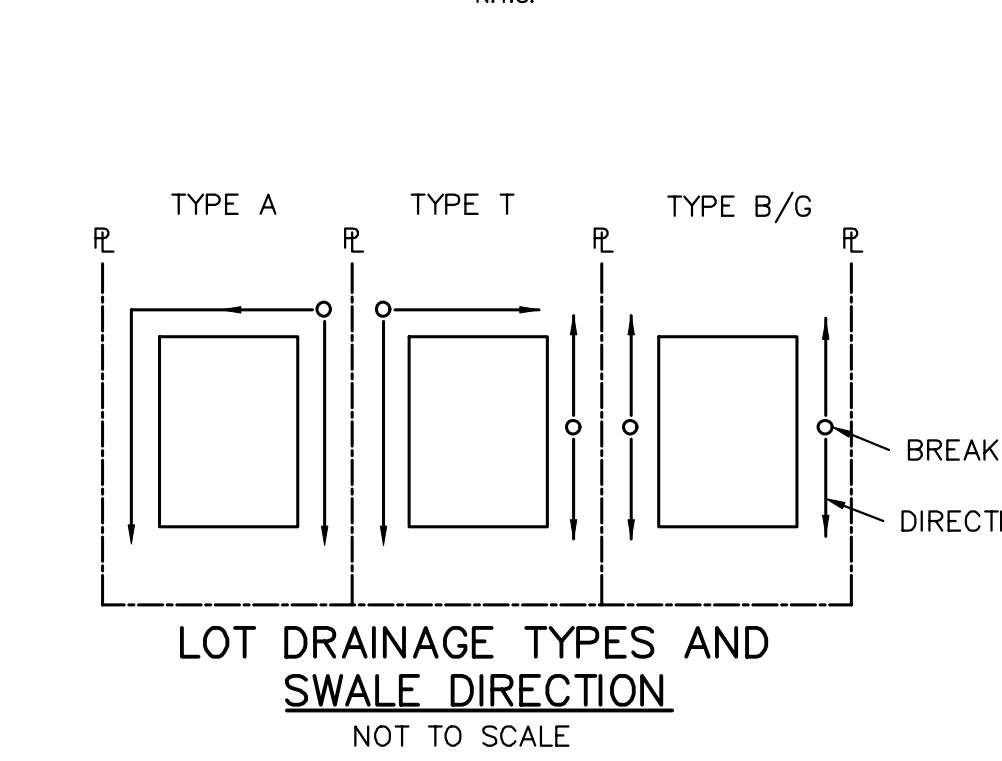
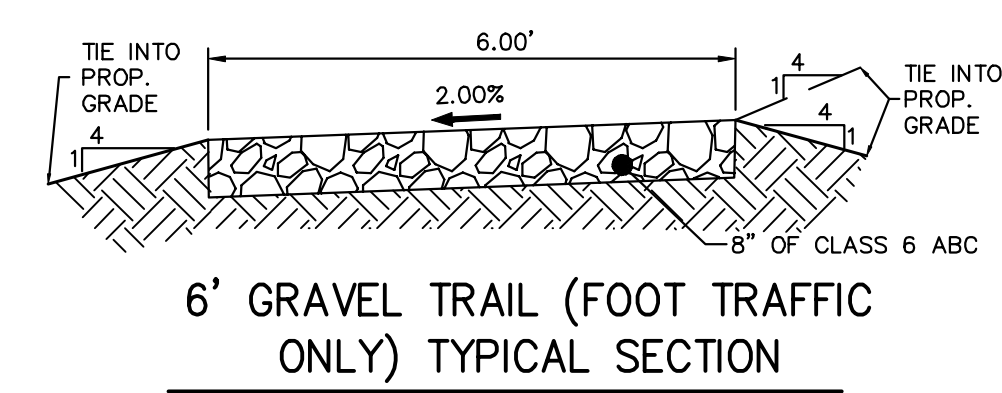
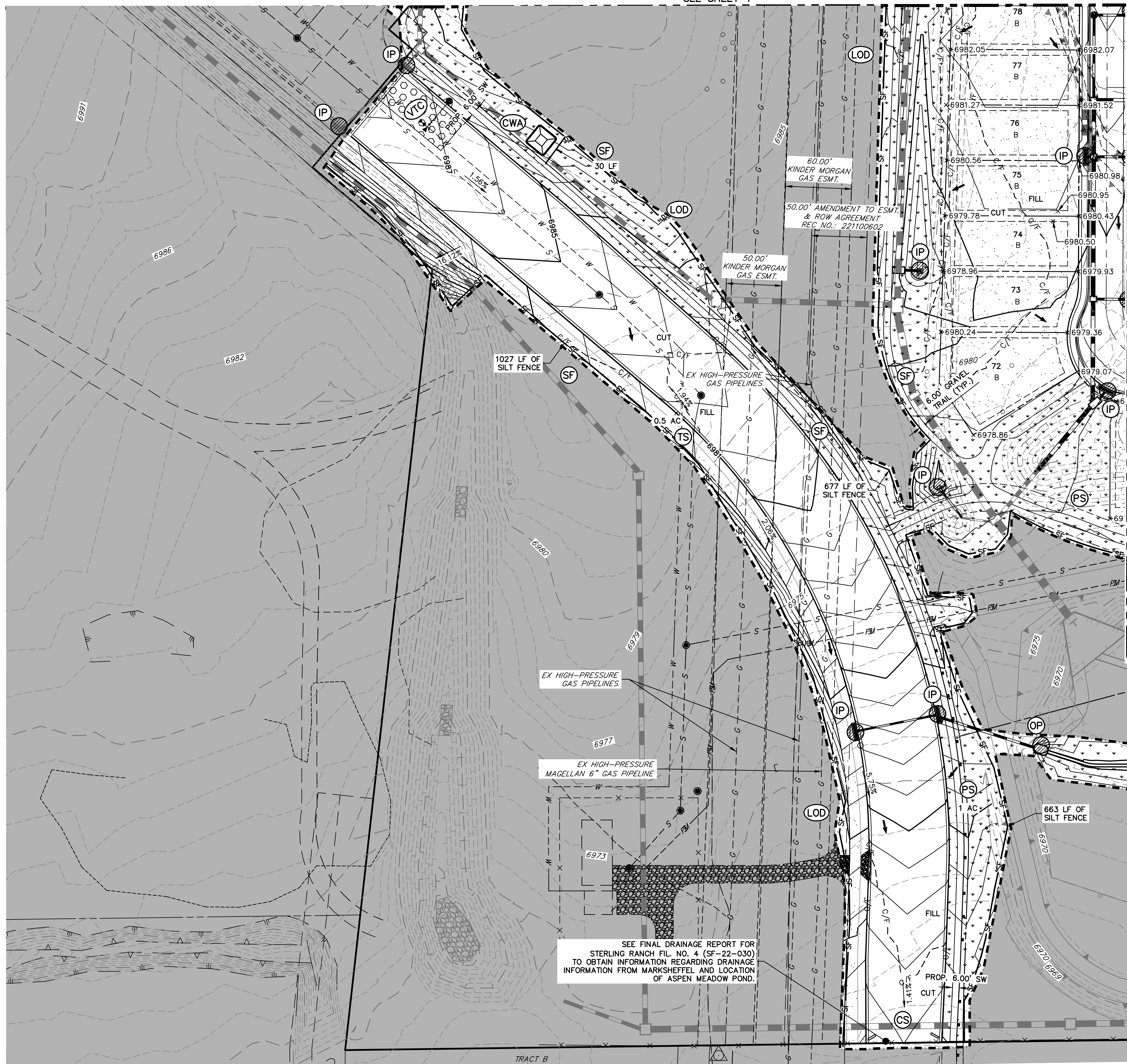
STERLING RANCH FILING 4	STORM SEWER PLAN	SHEET 8 OF 14	JOB NO. 25188.11	BY	DATE
				NO. REVISION	
H-SCALE 1"=30'	V-SCALE 1"=3'	DATE 08/14/23	DESIGNED BY RAB	DRAWN BY WKN	CHECKED BY

UNTIL SUCH TIME AS THESE DRAWINGS ARE APPROVED BY THE APPROPRIATE REVIEWING AGENCIES, JR ENGINEERING APPROVES THEIR USE FOR THE PURPOSES DESIGNATED BY WRITTEN AUTHORIZATION.

PREPARED FOR  
**SR LAND, LLC**  
 20 BOULDER CRESCENT  
 SUITE 201  
 COLORADO SPRINGS, CO 80903  
 JAMES F. MORLEY  
 (719) 471-1742

**J.R. ENGINEERING**  
 A Westlin Company  
 Centennial 303-740-8888 • Colorado Springs 719-583-2583  
 Fort Collins 970-491-9888 • www.jrengineering.com

SEE SHEET 4



**LEGEND**

KEY	SYMBOL
CURB SOCK (INITIAL/ INTERM)	CS
CONCRETE WASHOUT AREA (INITIAL)	CWA
DIVERSION DITCH AND DIKE, TEMPORARY (INTERIM/ FINAL)	DD
INLET PROTECTION (INITIAL/ INTERM)	IP
OUTLET PROTECTION (INITIAL/ INTERM)	OP
LIMITS OF CONSTRUCTION/DISTURBANCE	LOD
PERMANENT SEEDING (FINAL)	PS
FLOW ARROW	→
SEDIMENT CONTROL LOG (INITIAL/ INTERM)	SCL
CUT/FILL MARK	C/F
SILT FENCE (INITIAL)	SF
STABILIZED STAGING AREA (INITIAL)	SSA
TEMPORARY SEEDING (FINAL)	TS
VEHICLE TRACKING CONTROL (INITIAL)	VTC
EXISTING WETLANDS	Wetland Symbol

**EARTHWORK NOTES**

PARCEL A & B:  
 AREA OF CUT = 72,572 CY  
 AREA OF FILL = 56,930 CY  
 NET VOLUME = 15,643 CY

MARKSHEFFEL RD:  
 AREA OF CUT = 1,991 CY  
 AREA OF FILL = 5,848 CY  
 NET VOLUME = 3,857 CY

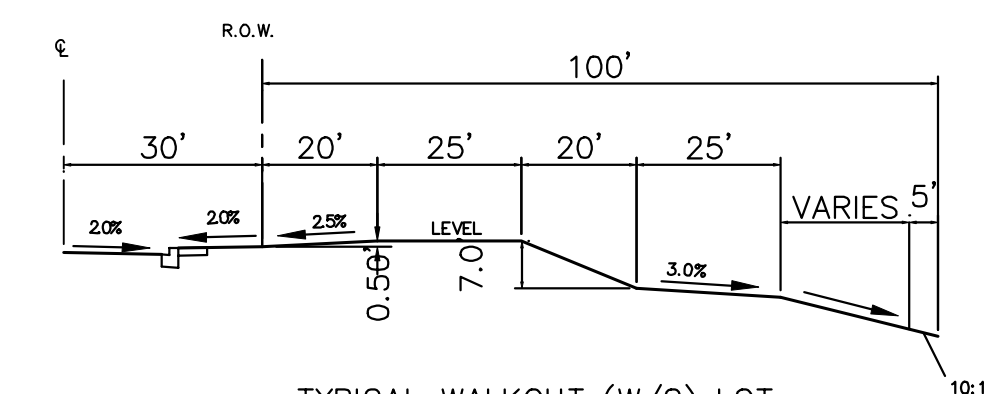
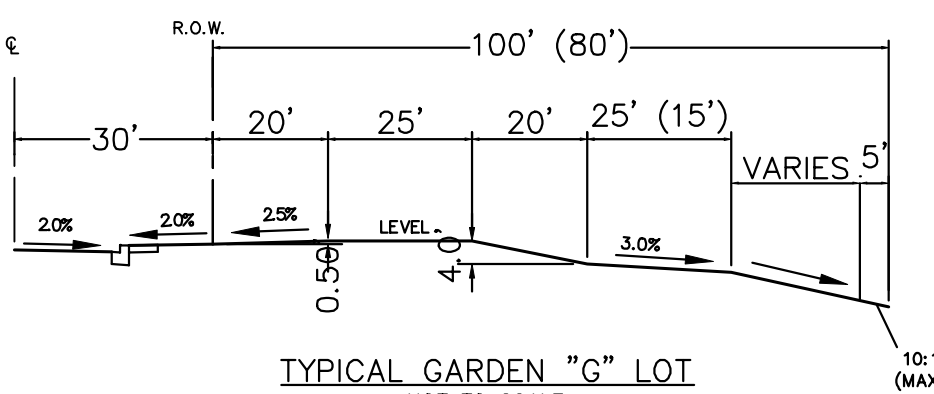
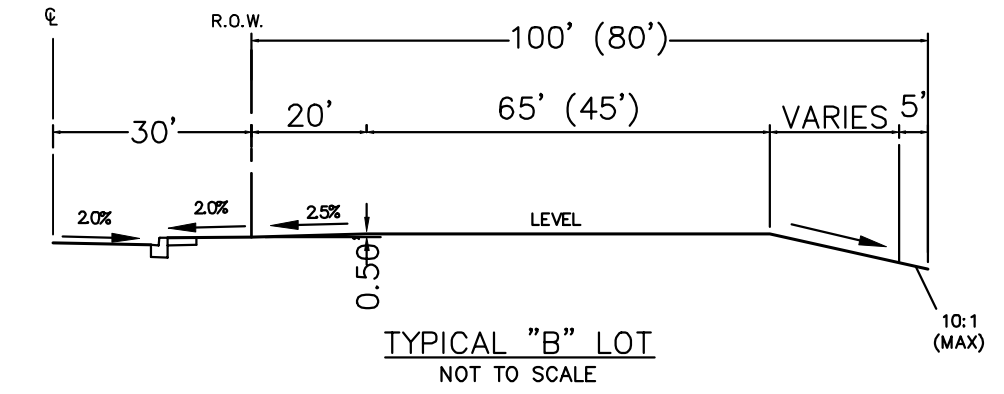
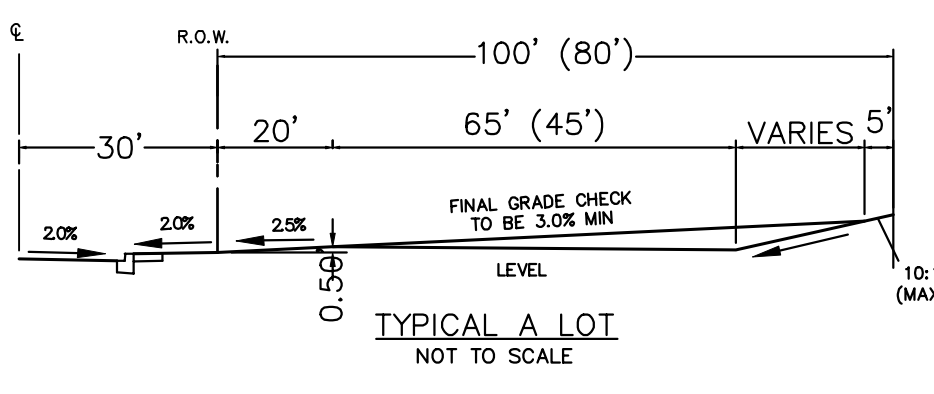
**ADDITIONAL NOTES**

STAGING AREA TO BE DETERMINED BY CONTRACTOR IN THE FIELD. THE LOCATIONS SHALL BE DELINEATED ON THIS PLAN BY THE CONTRACTOR.

THE EROSION CONTROL DELINEATED ON THIS PLAN SHALL BE REGULARLY UPDATED BY THE CONTRACTOR.

POSTS FOR SILT FENCE MUST BE MIN 5' EITHER SIDE PIPELINE(S).

**WARNING**  
**HIGH-PRESSURE PIPELINE(S)**  
 EXCAVATION AND/OR CONSTRUCTION PROHIBITED WITHOUT COMPLIANCE WITH STATE ONE-CALL, AND WITHOUT WRITTEN PERMISSION FROM  
 MAGELLAN PIPELINE COMPANY, L.P.



**ENGINEER'S STATEMENT**

PREPARED UNDER MY DIRECT SUPERVISION AND ON BEHALF OF JR ENGINEERING  
 Mike A. Bramlett, P.E. 32314 08/14/23  
 COLORADO P.E. 32314  
 FOR AND ON BEHALF OF JR ENGINEERING, INC.

UNTIL SUCH TIME AS THESE DRAWINGS ARE APPROVED BY THE APPROPRIATE REVIEWING AGENCIES, JR ENGINEERING APPROVES THEIR USE AS DESIGNATED BY WRITTEN AUTHORIZATION.

PREPARED FOR  
 SR LAND, LLC  
 20 BOULDER CRESCENT  
 SUITE 201  
 COLORADO SPRINGS, CO 80903  
 JAMES F. MORLEY  
 (719) 471-1742

**J.R. ENGINEERING**  
 A Westman Company  
 Centennial 303-740-8888 • Colorado Springs 719-588-2583  
 Fort Collins 970-491-9888 • www.jrengineering.com

BY	DATE	REVISION

H-SCALE 1"=50'  
 V-SCALE N/A  
 DATE 08/14/23  
 DESIGNED BY AMT  
 DRAWN BY AMT  
 CHECKED BY

STERLING RANCH FILING 4  
 GRADING & EROSION CONTROL PLAN

SHEET 6 OF 10  
 JOB NO. 25188.11