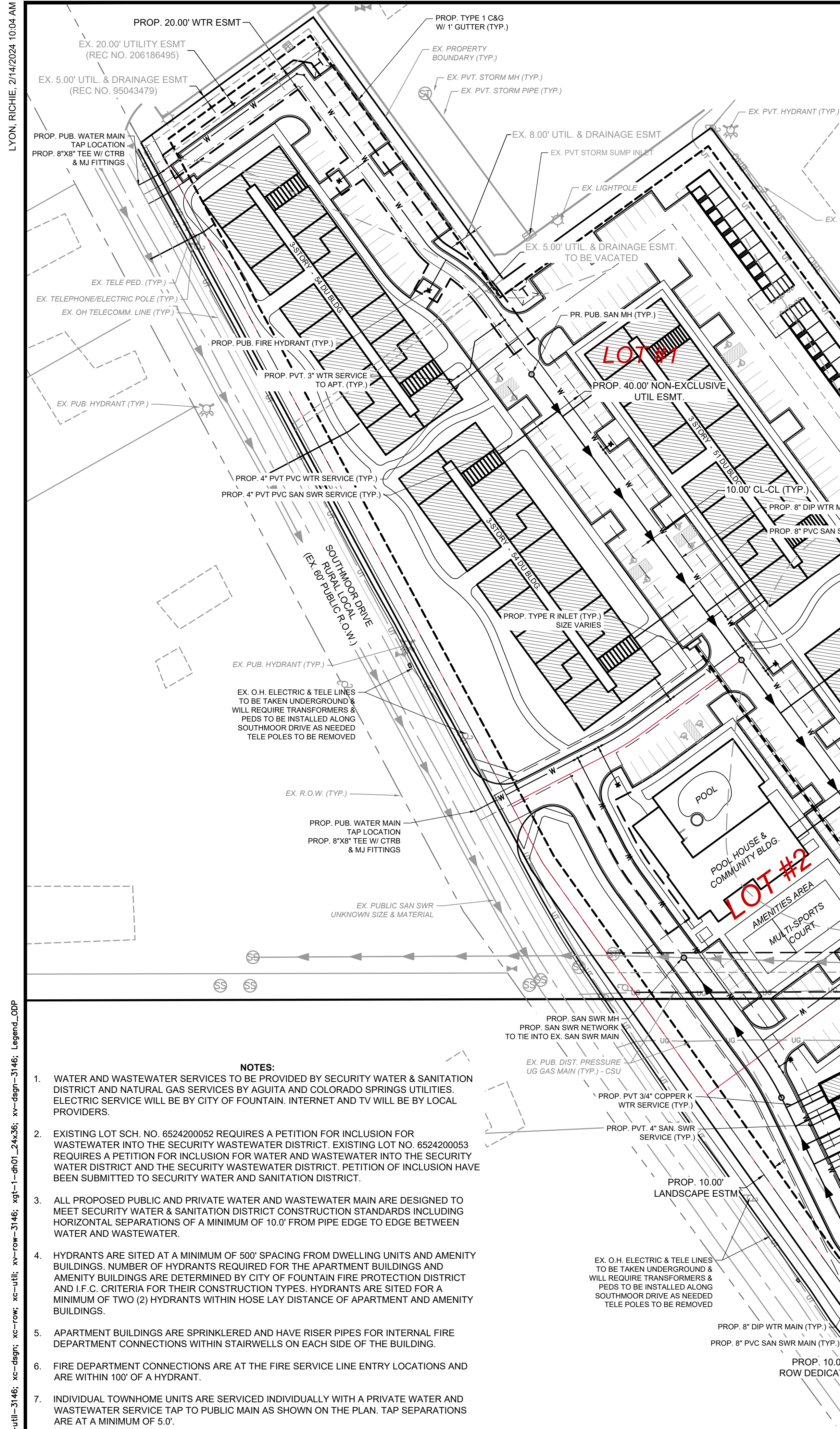
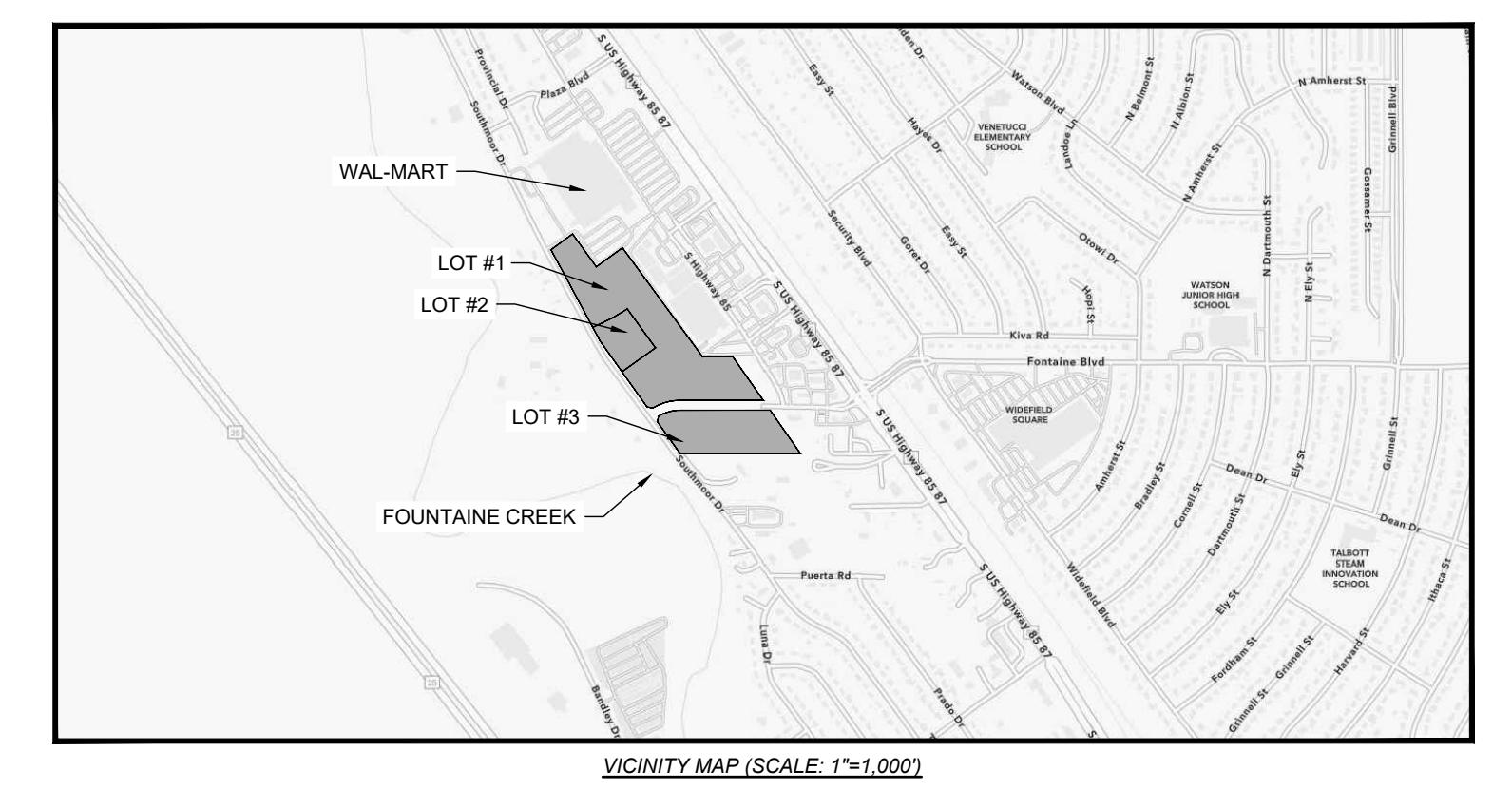


SOUTHMOOR RIDGE

PRELIMINARY UTILITY PLANS

A TRACT OF LAND LOCATED IN A PORTION OF THE NORTH HALF OF THE NORTHWEST QUARTER OF SECTION 24, AND IN A PORTION OF THE SOUTH HALF OF THE SOUTHWEST QUARTER OF SECTION 13, ALL IN TOWNSHIP 15 SOUTH, RANGE 66 WEST OF THE 6TH P.M., COUNTY OF EL PASO, STATE OF COLORADO



LEGEND

	EXISTING	PROPOSED		EXISTING	PROPOSED
MATCH LINE	---	---	STORM SEWER	⊗	⊕
LOT LINE	---	---	MANHOLE	⊗	⊕
SECTION LINE	---	---	STORM INLET	⊗	⊕
PROPERTY LINE	---	---	FLARED END SECTION	⊗	⊕
EASEMENT LINE	---	---	RIPRAP	⊗	⊕
RIGHT OF WAY	---	---	CONC. FOREBAY	⊗	⊕
CENTERLINE	---	---	CONC. TRICKLE CHANNEL	⊗	⊕
PLASTIC FENCE	X-X	X-X	DETENTION AREA	⊗	⊕
WOODEN FENCE	--- ---	--- ---	SANITARY SEWER	⊗	⊕
U.G. ELECTRIC	UE	UE	CLEAN OUT	⊗	⊕
OVERHEAD ELECTRIC	OHE	OHE	MANHOLE	⊗	⊕
GAS MAIN	UG	UG	PLUG	⊗	⊕
SANITARY SEWER	---	---	WATER	⊗	⊕
STORM DRAIN	---	---	FIRE HYDRANT	⊗	⊕
TELEPHONE	UT	UT	FIRE DEPT. CONNECTION	⊗	⊕
WATER MAIN	---	---	GATE VALVE	⊗	⊕
SWALE	---	---	MANHOLE	⊗	⊕
TRAIL	---	---	METER	⊗	⊕
CURB & GUTTER	---	---	TEE	⊗	⊕
INDEX CONTOUR	5250	5250	REDUCER	⊗	⊕
INTER. CONTOUR	---	---	DRY UTILITIES		
100-YR FLOODPLAIN	---	---	ELECTRIC METER	⊗	⊕
FLOODWAY	---	---	ELECTRIC PEDESTAL	⊗	⊕
			ELECTRICAL CABINET	⊗	⊕
			ELECTRIC VAULT	⊗	⊕
			FIBER OPTIC PULL BOX	⊗	⊕
			FIBER OPTIC MANHOLE	⊗	⊕
			FIBER OPTIC PEDESTAL	⊗	⊕
			FIBER OPTIC VAULT	⊗	⊕
			GAS METER	⊗	⊕
			GAS SIGN	⊗	⊕
			GAS VAULT	⊗	⊕
			TELEPHONE CABINET	⊗	⊕
			TELEPHONE MANHOLE	⊗	⊕
			TELEPHONE SIGNAL/MAST	⊗	⊕
			TELEPHONE SIGN	⊗	⊕
			TELEPHONE PEDESTAL	⊗	⊕
			TRANSFORMER	⊗	⊕
			LIGHT POLE	⊗	⊕
			FIBER OPTIC VAULT	⊗	⊕
			MISCELLANEOUS		
			SIGN	⊗	⊕
			BOLLARD	⊗	⊕
			ACCESSIBLE PARKING	⊗	⊕

- NOTES:**
- WATER AND WASTEWATER SERVICES TO BE PROVIDED BY SECURITY WATER & SANITATION DISTRICT AND NATURAL GAS SERVICES BY AGUIA AND COLORADO SPRINGS UTILITIES. ELECTRIC SERVICE WILL BE BY CITY OF FOUNTAIN. INTERNET AND TV WILL BE BY LOCAL PROVIDERS.
 - EXISTING LOT SCH. NO. 6524200052 REQUIRES A PETITION FOR INCLUSION FOR WASTEWATER INTO THE SECURITY WASTEWATER DISTRICT. EXISTING LOT NO. 6524200053 REQUIRES A PETITION FOR INCLUSION FOR WATER AND WASTEWATER INTO THE SECURITY WATER DISTRICT AND THE SECURITY WASTEWATER DISTRICT. PETITION OF INCLUSION HAVE BEEN SUBMITTED TO SECURITY WATER AND SANITATION DISTRICT.
 - ALL PROPOSED PUBLIC AND PRIVATE WATER AND WASTEWATER MAIN ARE DESIGNED TO MEET SECURITY WATER & SANITATION DISTRICT CONSTRUCTION STANDARDS INCLUDING HORIZONTAL SEPARATIONS OF A MINIMUM OF 10.0' FROM PIPE EDGE TO EDGE BETWEEN WATER AND WASTEWATER.
 - HYDRANTS ARE SITED AT A MINIMUM OF 500' SPACING FROM DWELLING UNITS AND AMENITY BUILDINGS. NUMBER OF HYDRANTS REQUIRED FOR THE APARTMENT BUILDINGS AND AMENITY BUILDINGS ARE DETERMINED BY CITY OF FOUNTAIN FIRE PROTECTION DISTRICT AND I.F.C. CRITERIA FOR THEIR CONSTRUCTION TYPES. HYDRANTS ARE SITED FOR A MINIMUM OF TWO (2) HYDRANTS WITHIN HOSE LAY DISTANCE OF APARTMENT AND AMENITY BUILDINGS.
 - APARTMENT BUILDINGS ARE SPRINKLERED AND HAVE RISER PIPES FOR INTERNAL FIRE DEPARTMENT CONNECTIONS WITHIN STAIRWELLS ON EACH SIDE OF THE BUILDING.
 - FIRE DEPARTMENT CONNECTIONS ARE AT THE FIRE SERVICE LINE ENTRY LOCATIONS AND ARE WITHIN 100' OF A HYDRANT.
 - INDIVIDUAL TOWNHOME UNITS ARE SERVICED INDIVIDUALLY WITH A PRIVATE WATER AND WASTEWATER SERVICE TAP TO PUBLIC MAIN AS SHOWN ON THE PLAN. TAP SEPARATIONS ARE AT A MINIMUM OF 5.0'.

WATER/SANITATION DISTRICT:
 SECURITY WATER & SANITATION DISTRICT
 231 SECURITY BOULEVARD
 COLORADO SPRINGS, CO 80911
 ATTN: BRANDON BERNARD, ROY HEALD
 TELE: 719.392.3475

NATURAL GAS:
 NORTH AREA OF SITE:
 COLORADO SPRINGS UTILITIES
 1521 HANCOCK EXPRESSWAY #4801
 COLORADO SPRINGS, CO 80903

SOUTH AREA OF SITE:
 BLACK HILLS ENERGY
 105 S. VICTORIA AVENUE
 PUEBLO, CO 81003
 ATTN: ADAM MAGOON
 TELE: 719.400.8995
 EMAIL: ADAM.MAGOON@BLACKHILLSCORP.COM

ELECTRIC:
 CITY OF FOUNTAIN ELECTRIC
 118 SOUTH MAIN STREET
 FOUNTAIN, COLORADO 80817
 TELE: 719.322.2000

DRAWN BY: DLH JOB DATE: 2/12/2024
 APPROVED: RDL JOB NUMBER: 2303146
 CAD DATE: 2/14/2024
 CAD FILE: J:\2023\2303146\CAD\DWG\CIPrelim_Utilities\Preliminary_Utilities-3146

NO.	DATE	BY	REVISION DESCRIPTION

HRGreen
 HR GREEN - COLORADO SPRINGS
 7222 COMMERCE CENTER DR. SUITE 220
 COLORADO SPRINGS CO 80919
 PHONE: 719.622.6222
 FAX: 844.273.1057

SOUTHMOOR RIDGE
 DHN DEVELOPMENT INC.
 FOUNTAIN, COLORADO

DHN Development

PLACES management

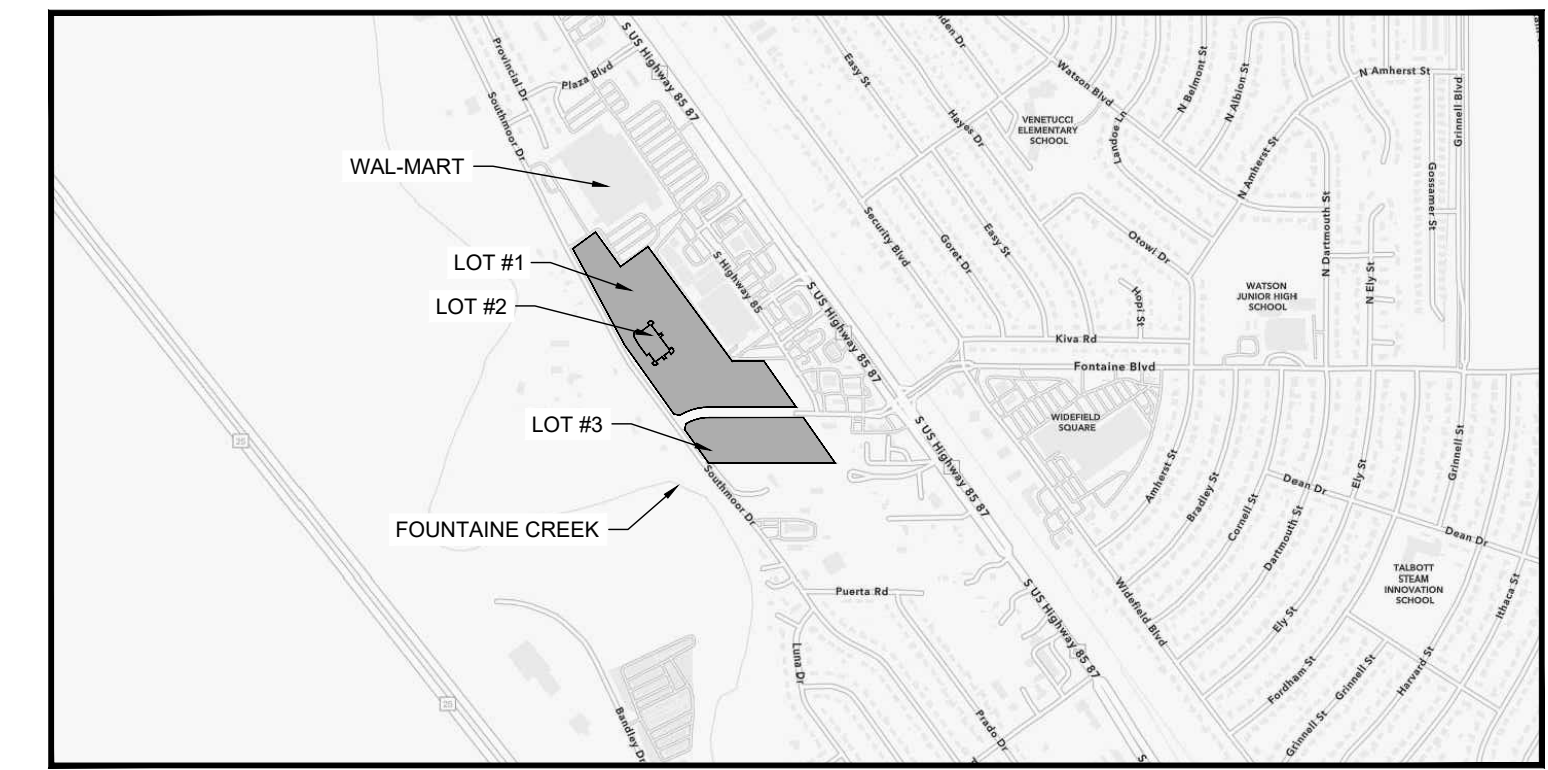
OVERALL DEVELOPMENT PLAN
 PRELIMINARY UTILITY PLAN

SHEET UTIL 1

SOUTHMOOR RIDGE

PRELIMINARY UTILITY PLANS

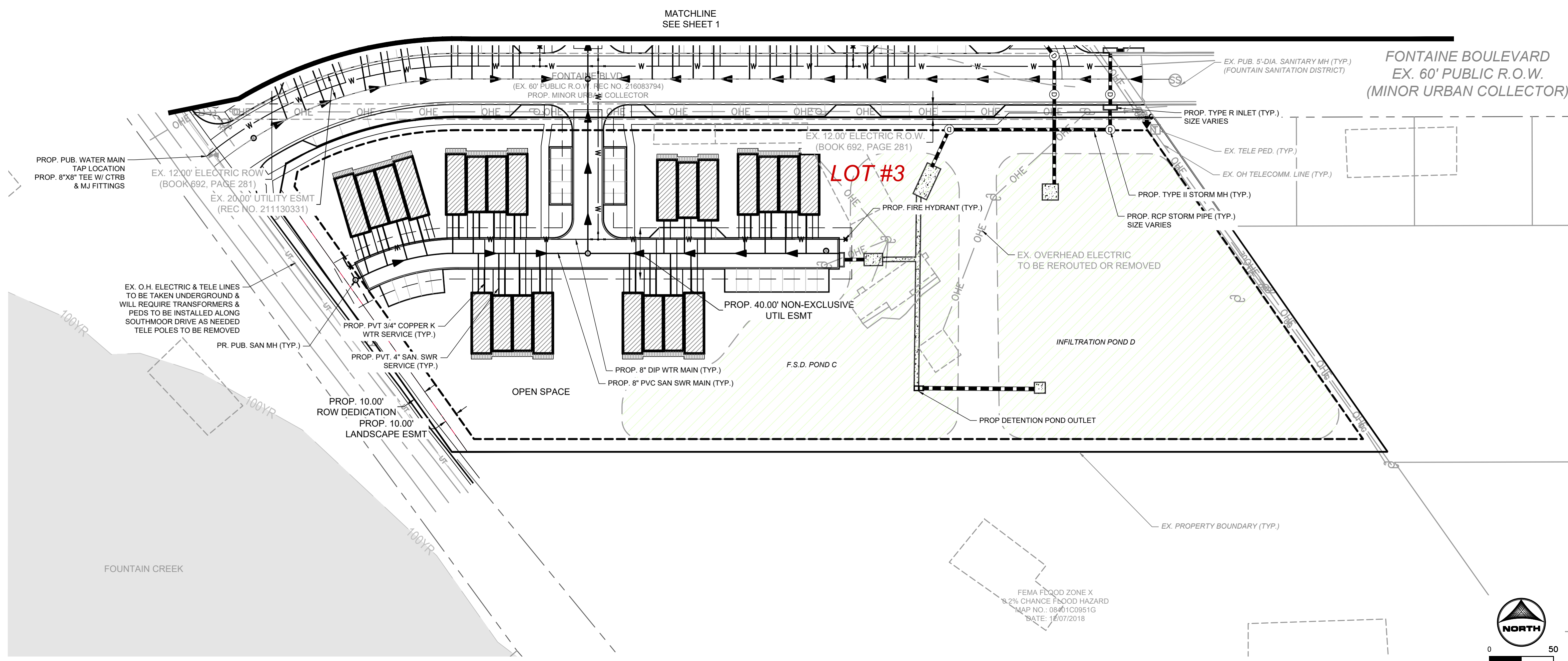
A TRACT OF LAND LOCATED IN A PORTION OF THE NORTH HALF OF THE NORTHWEST QUARTER OF SECTION 24, AND IN A PORTION OF THE SOUTH HALF OF THE SOUTHWEST QUARTER OF SECTION 13, ALL IN TOWNSHIP 15 SOUTH, RANGE 66 WEST OF THE 6TH P.M., COUNTY OF EL PASO, STATE OF COLORADO



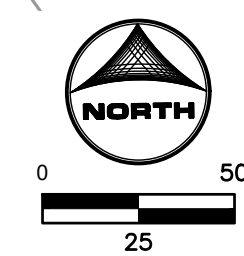
VICINITY MAP (SCALE: 1"=1,000')

LEGEND

	EXISTING	PROPOSED		EXISTING	PROPOSED
MATCH LINE	---	---	STORM SEWER		
LOT LINE	---	---	MANHOLE	⊙	⊙
SECTION LINE	---	---	STORM INLET	⊙	⊙
PROPERTY LINE	---	---	FLARED END SECTION	⊙	⊙
EASEMENT LINE	---	---	RIPRAP	⊙	⊙
RIGHT OF WAY	---	---	CONC. FOREBAY	⊙	⊙
CENTERLINE	---	---	CONC. TRICKLE CHANNEL	⊙	⊙
PLASTIC FENCE	X-X	X-X	DETENTION AREA	⊙	⊙
WOODEN FENCE			SANITARY SEWER		
U.G. ELECTRIC	UE	UE	CLEAN OUT	⊙	⊙
OVERHEAD ELECTRIC	OHE	OHE	MANHOLE	⊙	⊙
GAS MAIN	UG	UG	PLUG	⊙	⊙
SANITARY SEWER	---	---	WATER		
STORM DRAIN	---	---	FIRE HYDRANT	⊙	⊙
TELEPHONE	UT	UT	FIRE DEPT. CONNECTION	⊙	⊙
WATER MAIN	---	---	GATE VALVE	⊙	⊙
SWALE	---	---	MANHOLE	⊙	⊙
TRAIL	---	---	METER	⊙	⊙
CURB & GUTTER	---	---	TEE	⊙	⊙
INDEX CONTOUR	---5250---	---5250---	REDUCER	⊙	⊙
INTER. CONTOUR	---	---			
100-YR FLOODPLAIN	---	---			
FLOODWAY	---	---			
			DRY UTILITIES		MISCELLANEOUS
			ELECTRIC METER	⊙	SIGN
			ELECTRIC PEDESTAL	⊙	BOLLARD
			ELECTRICAL CABINET	⊙	ACCESSIBLE PARKING
			ELECTRIC VAULT	⊙	
			FIBER OPTIC PULL BOX	⊙	
			FIBER OPTIC MANHOLE	⊙	
			FIBER OPTIC PEDESTAL	⊙	
			FIBER OPTIC SIGN	⊙	
			FIBER OPTIC VAULT	⊙	
			GAS METER	⊙	
			GAS SIGN	⊙	
			GAS VAULT	⊙	
			TELEPHONE CABINET	⊙	
			TELEPHONE MANHOLE	⊙	
			TELEPHONE SIGNAL/MAST	⊙	
			TELEPHONE SIGN	⊙	
			TELEPHONE PEDESTAL	⊙	
			TRANSFORMER	⊙	
			LIGHT POLE	⊙	
			FIBER OPTIC VAULT	⊙	



- NOTES:**
1. WATER AND WASTEWATER SERVICES TO BE PROVIDED BY SECURITY WATER & SANITATION DISTRICT AND NATURAL GAS SERVICES BY AGUIA AND COLORADO SPRINGS UTILITIES. ELECTRIC SERVICE WILL BE BY CITY OF FOUNTAIN. INTERNET AND TV WILL BE BY LOCAL PROVIDERS.
 2. EXISTING LOT SCH. NO. 6524200052 REQUIRES A PETITION FOR INCLUSION FOR WASTEWATER INTO THE SECURITY WASTEWATER DISTRICT. EXISTING LOT NO. 6524200053 REQUIRES A PETITION FOR INCLUSION FOR WATER AND WASTEWATER INTO THE SECURITY WATER DISTRICT AND THE SECURITY WASTEWATER DISTRICT. PETITION OF INCLUSION HAVE BEEN SUBMITTED TO SECURITY WATER AND SANITATION DISTRICT.
 3. ALL PROPOSED PUBLIC AND PRIVATE WATER AND WASTEWATER MAIN ARE DESIGNED TO MEET SECURITY WATER & SANITATION DISTRICT CONSTRUCTION STANDARDS INCLUDING HORIZONTAL SEPARATIONS OF A MINIMUM OF 10.0' FROM PIPE EDGE TO EDGE BETWEEN WATER AND WASTEWATER.
 4. HYDRANTS ARE SITED AT A MINIMUM OF 500' SPACING FROM DWELLING UNITS AND AMENITY BUILDINGS. NUMBER OF HYDRANTS REQUIRED FOR THE APARTMENT BUILDINGS AND AMENITY BUILDINGS ARE DETERMINED BY CITY OF FOUNTAIN FIRE PROTECTION DISTRICT AND I.F.C. CRITERIA FOR THEIR CONSTRUCTION TYPES. HYDRANTS ARE SITED FOR A MINIMUM OF TWO (2) HYDRANTS WITHIN HOSE LAY DISTANCE OF APARTMENT AND AMENITY BUILDINGS.
 5. APARTMENT BUILDINGS ARE SPRINKLERED AND HAVE RISER PIPES FOR INTERNAL FIRE DEPARTMENT CONNECTIONS WITHIN STAIRWELLS ON EACH SIDE OF THE BUILDING.
 6. FIRE DEPARTMENT CONNECTIONS ARE AT THE FIRE SERVICE LINE ENTRY LOCATIONS AND ARE WITHIN 100' OF A HYDRANT.
 7. INDIVIDUAL TOWNHOME UNITS ARE SERVICED INDIVIDUALLY WITH A PRIVATE WATER AND WASTEWATER SERVICE TAP TO PUBLIC MAIN AS SHOWN ON THE PLAN. TAP SEPARATIONS ARE AT A MINIMUM OF 5.0'.



LYON, RICHIE, 2/14/2024, 10:04 AM

DRAWN BY: DLH JOB DATE: 2/12/2024 BAR IS ONE INCH ON OFFICIAL DRAWINGS.
 APPROVED: RDL JOB NUMBER: 2303146 0"=1"
 CAD DATE: 2/14/2024 IF NOT ONE INCH, ADJUST SCALE ACCORDINGLY.
 CAD FILE: J:\2023\2303146\CAD\DWG\C\Prelim_Uilities\Preliminary_Uilities-3146

NO.	DATE	BY	REVISION DESCRIPTION

HRGreen
 HR GREEN - COLORADO SPRINGS
 7222 COMMERCE CENTER DR. SUITE 220
 COLORADO SPRINGS CO 80919
 PHONE: 719.622.6222
 FAX: 844.273.1057

SOUTHMOOR RIDGE
 DHN DEVELOPMENT INC.
 FOUNTAIN, COLORADO