



RPM, Inc.

August 5, 2020

Ellicott Fire Protection District
Attn: Fire Chief
75 North Ellicott Highway
Calhan, CO 80808

Certified Mail #:7019 1640 0000 5396 8216

Dear Fire Chief,

I represent Ellicott Sand and Gravel, LLC. We are applying for El Paso County approval to open a sand and gravel mining operation in El Paso County, south of Ellicott, Colorado. The proposed operation will be known as the Schubert Ranch Sand Resource (Pit). The attached map shows the location and proposed permit boundary for the Operation. We are presently going through the El Paso County review and approval process. One of the questions the County asked concerns whether we need to have a cistern for fire suppression and to contact the local fire district for input. We are therefore requesting your input as to whether we need to install a cistern.

We request you consider the following information in making your decision:

- This will be a mining operation. As such, the area of active mining will be stripped of topsoil and combustible vegetation. The stripped soil and entrained vegetative materials will be placed in topsoil stockpiles for site reclamation. All combustible waste materials (paper, etc.) will be placed in fire proof/resistant containers for disposal off-site, at an approved disposal facility.
- A Schubert Ranch ground water will be available for use. (well # 9642-FP)
- No structures, other than a portable scale house and scale are proposed for the site, at this time.
 - ❖ Processing equipment will be brought on to the site to produce salable product stockpiles. Once a sufficient amount of stockpiled product is produced, the processing equipment will be moved to a different Ellicott Sand and Gravel mining operation. This cycling of process of equipment will continue for the life of the pit.
 - ❖ We may need to retain a loader or two on-site in order to load out of product stockpiles and into highway haul trucks. The on-site loader(s) may be moved off-site during extended periods of time, in order to prevent equipment vandalism.



RPM, Inc.

- Toxic and hazardous materials:
 - ❖ No toxic or hazardous materials, other than what will be used in a typical piece of mining equipment will be on-site, i.e. diesel fuel, hydraulic fluid, antifreeze and oil and greases.
 - ✓ As needed, we will return highway haul trucks to our maintenance facility in Colorado Spring for servicing and fueling.
 - ✓ Option 2, a diesel fuel tank may be brought on-site. It will be double walled and will hold less than 1,320 gallons.
 - ✓ Option 3, we may make use of a lube and fuel truck to service, on-site, mobile mining equipment.
- We will have a water truck on-site to provide fugitive dust control. Fugitive dust control will include water for roads, crushing, screening and stackers.
- All mobile mine equipment (to include the scale house) will have fire extinguishers, as required by the Mine Safety and Health Administration (MSHA). Staff will also be trained in the proper use of fire extinguishers.
- There will be no open burning.
- We will clean up spills of petroleum products which meet the reportable quantities limits and dispose of the material used for clean-up at an approved, off-site waste disposal facility.
- Other than what is stated above, we do not plan any additional “Fire Protection and Wildfire Mitigation”. Therefore, we suggest a “Wildfire Mitigation Plan” is not needed at this time.
- Once operations begin, we encourage you or one of your staff, to visit the site and provide your input to as to the measures we may take, to improve site fire safety.

Respectfully,

H. Bruce Humphries

Regulatory Permits Management, Inc.

hlhumphries2@comcast.net

(303) 854-7499

Consultant for Ellicott Sand and Gravel, LLC

Encl:

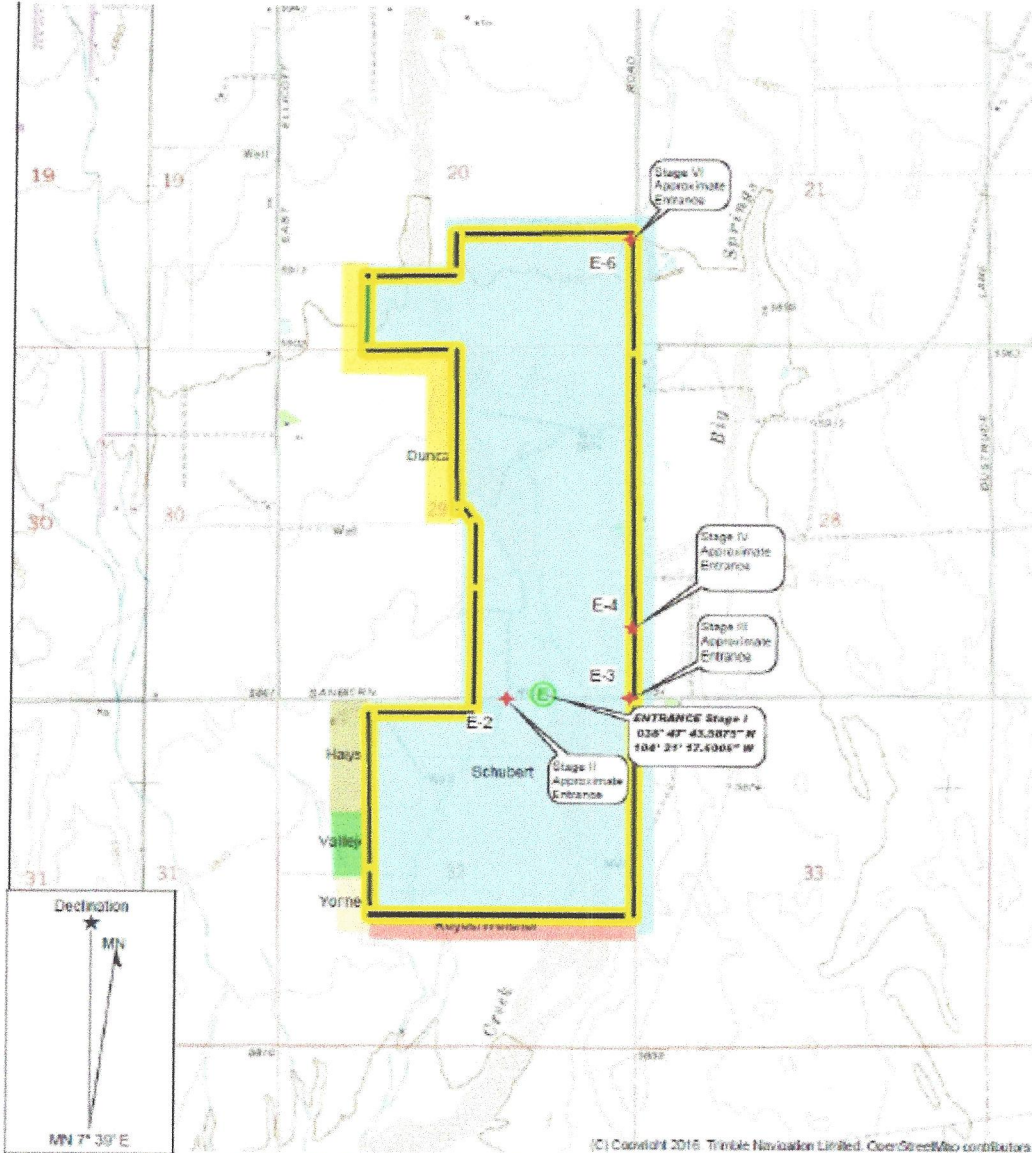
Mine Site Location Map



RPM, Inc.

Mine Site Location Map

➤ Vicinity Map:



(C) Copyright 2016, Trimble Navigation Limited. OpenStreetMap contributors

Quad Name: BIG SPRINGS RANCH
 Date: 03/03/20
 Scale: 1 inch = 2,000 ft.

Part of the S1/2N1/2SE1/4, S1/2SE1/4 and SE1/4SW 1/4 of Section 20, and The E1/2E1/2 and NW1/4NE1/4 and parts of the SW1/4NE1/4, SW1/4SE1/4, and NW1/4SE1/4 of Section 29 and The E1/2NE1/4, SW1/4NE1/4, & SE1/4NW1/4, and parts of the NW1/4NE1/4 & NE1/4NW1/4, Section 32, Township 14 South, Range 62 West, 6th P.M. El Paso County, Colorado
 Containing 733.7 acres more or less.

ELLICOTT SAND AND GRAVEL LLC
SCHUBERT RANCH SAND RESOURCE
MAP EXHIBIT B - VICINITY MAP



PARKER
18695 PONY EXPRESS DR
PARKER, CO 80134-9992
(800)275-8777

08/06/2020 05:03 PM

Product	Qty	Unit Price	Price
First-Class Mail® Letter	1		\$0.55
Calhan, CO 80808 Weight: 0 Lb 0.70 Oz Estimated Delivery Date Monday 08/10/2020			
Certified			\$3.55
USPS Certified Mail #			
70191640000053968216			
Return Receipt			\$2.85
USPS Return Receipt #			
9590940249549063082372			
Total			\$6.95
Grand Total:			\$6.95

Debit Card Remit'd \$6.95
Card Name: VISA
Account #: XXXXXXXXXXXX0382
Approval #
Transaction #: 246
Receipt #: 026786
Debit Card Purchase: \$6.95
Cash Back: \$0.00
AID: A0000000980840 Chip
AL: US DEBIT
PIN: Verified

Due to limited transportation availability as a result of nationwide COVID-19 impacts package delivery times may be extended. Priority Mail Express® service will not change.

In a hurry? Self-service kiosks offer quick and easy check-out. Any Retail Associate can show you how.

9216 8216 5396 0000 0440 1601

U.S. Postal Service™
CERTIFIED MAIL® RECEIPT
Domestic Mail Only

For delivery information, visit our website at www.usps.com®.

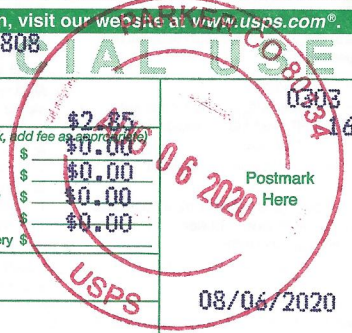
Calhan, CO 80808

Certified Mail Fee \$3.55

Extra Services & Fees (check box, add fee as appropriate)	\$2.85
<input type="checkbox"/> Return Receipt (hardcopy)	\$0.00
<input type="checkbox"/> Return Receipt (electronic)	\$0.00
<input type="checkbox"/> Certified Mail Restricted Delivery	\$0.00
<input type="checkbox"/> Adult Signature Required	\$0.00
<input type="checkbox"/> Adult Signature Restricted Delivery	\$0.00

Postage \$0.55

Total Postage and Fees \$6.95



Sent To Ellicott Fire Protection Dist
Street and Apt. No., or PO Box No. 75 N Ellicott Highway
City, State, ZIP+4® Calhan, CO 80808

PS Form 3800, April 2015 PSN 7530-02-000-9047 See Reverse for Instructions