
WINSOME: PRELIMINARY PLAN AMENDMENT

LETTER OF INTENT

APRIL 2021

Please address the criteria of approval for a preliminary plan with this letter - you may be able to copy from previous approval and update according to the new plan with the additional lots.

PROPERTY OWNER

Winsome LLC
1864 Woodmoor Dr, Ste 100
Monument, Colorado 80132

APPLICANT:

Winsome LLC
1864 Woodmoor Dr, Ste 100
Monument, Colorado 80132

CONSULTANT:

N.E.S. Inc.
619 North Cascade Ave,
Colorado Springs, CO 80903

REQUEST

Winsome LLC requests approval of an amendment to the Winsome Preliminary Plan, approved July 9, 2019 by the El Paso County Board of County Commissioners. The amendment proposes the addition of (3) 5-acre lots in the northwest portion of the site in the R-5 zone. The (3) additional lots would be created by dividing (2) 10-acre lots into (4) 5-acre lots, and adding a 7.58-acre lot into the 87.668-acre Tract D open space. The Preliminary Plan Amendment also reflects minor site plan changes that have transpired through platting and construction documents for filings 1-2. Land use areas for the 768.028-acre property break down as follows:

- Residential Lots: 568.78 acres (146 lots)
- Commercial Lot: 7.21 acres
- Open Space: 145.2 acres
- Public ROW: 46.838 acres
- Total Acreage: 768.028

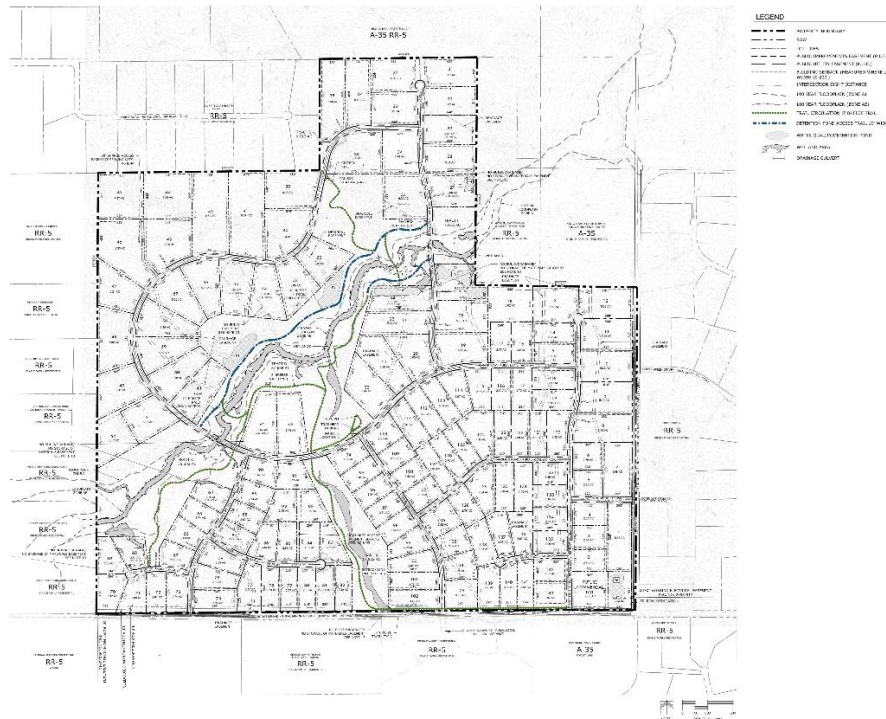
SUPPORTING DOCUMENTS

The following reports are submitted in support of this Preliminary Plan and are referenced in this Letter of Intent:

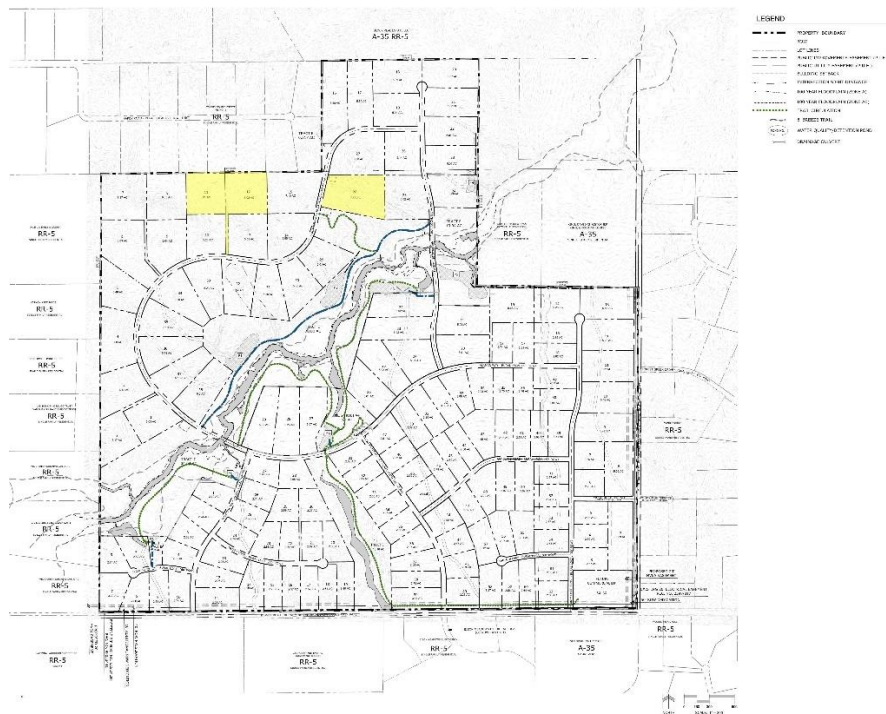
- Soils, Geology and OWTS Report prepared by Entech Engineering, Inc.
- Natural Features and Wetlands Report prepared by Ecosystem Services, LLC (ECOS)
- Wildland Fire & Hazard Mitigation Plan prepared by Ecosystem Services, LLC (ECOS)
- Water Resources and Wastewater Report prepared by JDS Hydro Consulting, Inc.
- Preliminary Drainage Report prepared by The Vertex Companies, Inc.
- FEMA CLOMR Report prepared by The Vertex Companies, Inc.

Update file no.

APPROVED SITE PLAN



AMENDED SITE PLAN



**Added lots highlighted in yellow.*

Open Space and Trails

This amendment proposes the overall reduction of 6.23 acres of open space. With that reduction, 144.77-acres of the property, almost 19%, will remain as open space to preserve the natural resource of the West Kiowa Creek and its associated floodplain and wetlands and to preserve existing vegetation. This open space will also provide recreational opportunities for the residents of the proposed subdivision and surrounding neighborhoods. A network of looping trails is proposed through the open spaces, connecting with the internal rural local roads to provide multiple access points. The open space and trails will be owned and maintained by the proposed Metropolitan District (via easements where on residential lots). Discussions with Parks Department staff has indicated that there is no desire for a County regional trail on this property, as it is not identified in the Parks Master Plan.

Drainage

The Preliminary Drainage Report prepared by Vertex analyses the existing drainage characteristics of the site and any required improvements. The proposed Winsome Subdivision is part of the West Kiowa Creek Drainage Basin with Kiowa Creek flowing from the southwest to the northeast across the property. Proposed drainage infrastructure includes road side ditches, culverts to convey stormwater under roads, swales, and six full spectrum detention ponds. All the detention ponds outfall the detained water into West Kiowa Creek at controlled rates. The proposed ponds are designed to reduce peak stormwater flow rates, down below historic rates before leaving the site. With the proposed drainage system, stormwater will be controlled and drainage will not have an impact on properties downstream from this development. The amended site plan shows additional stormwater ponds that were added with the filing 1 and 2 construction documents.

In the upper reaches of the property, individual lot owners will be responsible for maintaining proper stormwater drainage in and through their property. In lower reaches, public drainage easements are shown, which will be maintained by the Metropolitan District. Structures, fences, materials or landscaping that could impede the flow of runoff will not be permitted in the drainage easements.

Utilities

Water: The Water Resources and Wastewater Report prepared by JDS Hydro indicates that water service will be provided by individual domestic wells on the residential lots and by a commercial well on the commercial lot. The wells will be drilled into the Dawson Aquifer. The proposed development as amended will generate an annual demand of approximately 92.60 acre-feet, for which there is sufficient capacity in the Dawson aquifer. Replacement water required to augment depletions from the Dawson aquifer will be available through return flows from the OWTS septic fields. McCune Ranch also has water rights in the Denver, Arapahoe and Laramie-Fox aquifers, but this development is not relying on this water as most of these rights have been sold to Sterling Ranch Metropolitan District for municipal water. Water quality testing of the Dawson Aquifer wells has been completed and is addressed in the Water Resources and Wastewater Report. ***The Applicant requests that the finding of sufficiency for water quantity, dependability and quality be approved with this Preliminary Plan Amendment.***

Wastewater: Wastewater service will be provided by onsite wastewater treatment systems (OWTS). Entech's OWTS Report concludes that the property is generally suitable for OWTS and that contamination of surface and subsurface water sources should not occur provided the systems are

installed according to El Paso County and State guidelines. The Report identifies areas that are not suitable for OWTS. Some lots are impacted but still have sufficient space for OWTS due to the size of the lot. The report recommends individual soils investigations for septic systems prior to construction and that location of OWTS must ensure that well sites are a minimum of 100 feet from the OWTS absorption fields. Further detailed analysis of OWTS locations will be undertaken with the Final Plat.

Gas: Gas Service will be provided by Black Hills Energy and a Will Serve letter is provided.

Electric: Electric Service will be provided by Mountain View Electric Association and a Will Serve letter is provided.

Natural Features

The topography of the property is characterized by rolling hills and valleys with deep ravines drainage to the creek. The West Kiowa Creek, its associated floodplain and wetlands and ravines, is the principal natural feature on the property. In some instances, the wetlands and tails of the ravines are within lots and in these situations the areas are to be protected by “no build” easements. The general extent of these are identified on the Preliminary Plan but detailed evaluation and plotting will take place with the Final Plats.

Vegetation

The majority of the site is vegetated by short grass prairie, with wetlands alongside the creek and Ponderosa Pine in the northwest corner and along the southern property line. The area southeast of the creek has been heavily grazed, which has degraded the vegetation and allowed the establishment of invasive weeds. The eastern part of the site has been plowed in the past. The ECOS Natural Features and Wetlands Report notes that there will be little impact on vegetation due to the large lot format of the development and the extensive area protected as open space. There is the potential to improve the vegetation with the proposed noxious weed management plan and native plant restoration outlined in the ECOS Natural Features Report.

Noxious Weeds

The noxious weeds on the site are mainly contained within the proposed open space areas. ECOS have provided a noxious weed management plan within the Natural Features Report, which recommends weed control prior to and during construction to eliminate existing weeds and to prevent introducing new weeds. Following construction, the Metropolitan District will be responsible for weed control in the open space. With the individual lots, weed control will be the responsibility of the individual home owner and will be enforced through covenants.

Floodplain

Portions of the site adjacent to the West Kiowa Creek are mapped within Zone A of the FEMA Floodplain Map No. 08041CO350G, dated December 7, 2018. Zone A indicates that Base Flood Elevations have not been determined. A floodplain boundary has been assessed by Vertex as described in the FEMA CLOMR Report and is depicted on the Preliminary Plan. The proposed floodplain is subject to verification by FEMA through the CLOMR/LOMR process. The proposed floodplain is contained within the open space areas.

Wildlife

The ECOS report indicates that the site currently provides good habitat for a variety of wildlife. Birds are the most common wildlife, with mammals in the treed areas and reptiles and amphibians in and around the creek. The extensive area of open space proposed on the Preliminary Plan will provide a wide upland buffer for wildlife along the creek and the large lot configuration will minimize impact on wildlife. There will be low to no impact on protected species. The noxious weed management plan and recommended native plant revegetation will improve the wildlife habitat. Post and rail fencing is proposed on the perimeter of the subdivision and similar fencing will be the standard for the individual lots, which will be enforced by the Metro District.

Wetlands

The delineation of the wetlands on the site was undertaken by ECOS. The wetlands around the West Kiowa Creek, its tributaries and ravines, are jurisdictional and are mapped on the Preliminary Plan. There are also some isolated wetlands and upland swales that are determined to be non-jurisdictional. The jurisdictional wetlands are almost wholly within the open space area. Where the wetlands impact proposed lots, these areas are protected as no build easements. The only construction impact on the wetlands is the proposed street crossings and associated culverts. If wetland disturbance is cumulatively less than 0.5 acres, it will be covered by the Nationwide Permit #29 for residential development. If the impact is greater than 0.5 acres then a specific 404 Permit will be required from the US Army Corps of Engineers.

Soils and Geology

The Soils and Geology Report prepared by Entech identifies the geologic conditions that occur intermittently on the property, including artificial fill, loose or collapsible soils, expansive soils, slope stability, downslope creep, floodplain and potential high ground water. Many of these constraints are within the open space area and the floodplain is wholly within the open space. The report indicates that these conditions can be mitigated through proper engineering design and construction techniques, including special foundation design and subsurface drains. Lot 55 is impacted by an area of unstable slope and a "no build" easement 30-feet around the unstable slope is recommended and is shown on the Preliminary Plan. This lot has adequate buildable area outside the "no build" zone.

Wildfire Hazard Mitigation

The treed areas on the property lie within an area mapped as High Hazard for wildfire. The previous owners of the property undertook fire mitigation in 2013 and 2015, which included thinning trees, removing ladder fuels and modifying stand structure. The covenants for the subdivision set out standards for fire mitigation to ensure that this is a Firewise community and meets the County Development Standards for Fire Protection. Additional fire mitigation may be required on the individual lots to bring them into compliance with these standards. The location and type of new landscaping on individual lots will also be controlled to minimize wildfire risks. The Wildland Fire & Hazard Mitigation Plan prepared by ECOS provides more detail on the potential wildfire fuels on the property and suggested mitigation measures. This is a draft report and more detailed analysis of mitigation will be necessary as home locations are defined.