

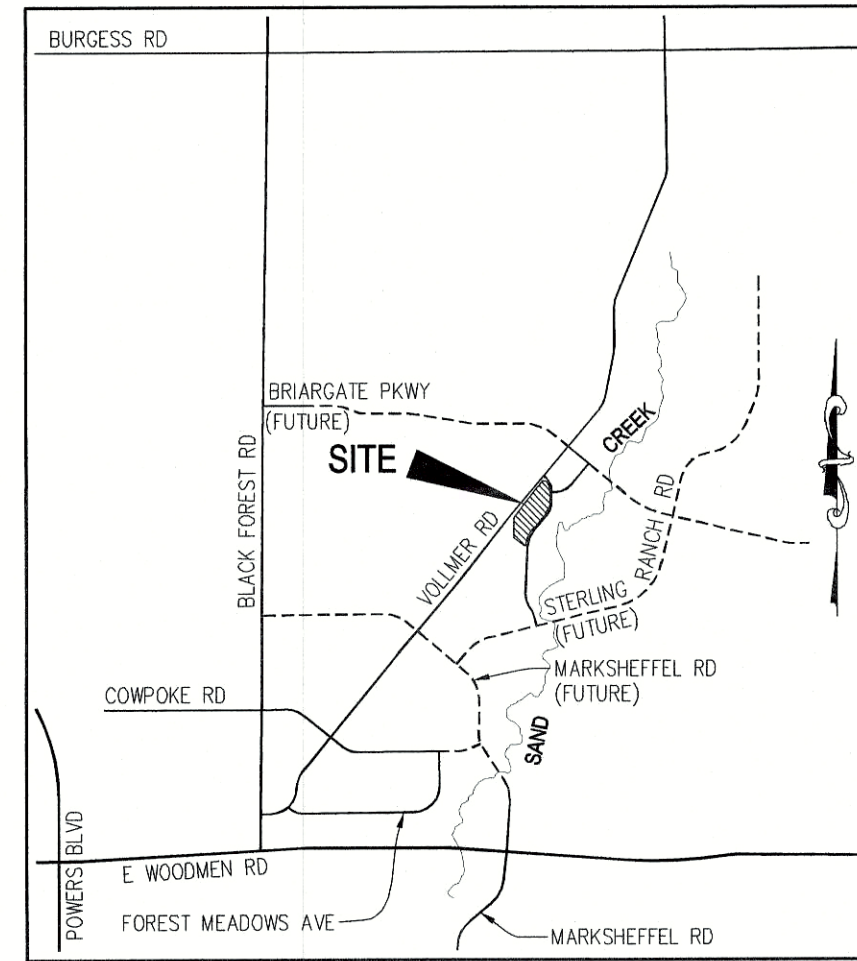
GENERAL NOTES

- ALL UTILITY CONSTRUCTION TO BE CONDUCTED IN CONFORMANCE WITH THE CURRENT WOODMEN HILLS METROPOLITAN DISTRICT (WHMD, THE DISTRICT) SPECIFICATIONS.
- ALL PLANS ON THE JOB SITE SHALL BE SIGNED BY THE DISTRICT AND THE DISTRICT'S ENGINEER. ANY REVISION TO THE PLANS SHALL BE SO NOTED WITH THE OLD DRAWING MARKED NOT VALID.
- ALL STATIONING IS CENTER LINE UNLESS OTHERWISE NOTED. ALL ELEVATIONS ARE CENTER LINE UNLESS OTHERWISE NOTED.
- ALL MATERIALS AND WORKMANSHIP SHALL BE SUBJECT TO INSPECTION BY THE DISTRICT. THE DISTRICT RESERVES THE RIGHT TO ACCEPT OR REJECT ANY SUCH MATERIALS AND WORKMANSHIP THAT DOES NOT CONFORM TO ITS STANDARDS AND SPECIFICATIONS.
- ALL OVER-LOT GRADING MUST BE COMPLETED TO WITHIN ONE (1) FOOT OF FINAL GRADE PRIOR TO INSTALLATION OF WATER AND WASTEWATER INFRASTRUCTURE.
- ALL WATER AND SEWER SERVICE LOCATIONS SHALL BE CLEARLY MARKED ON EITHER THE CURB HEAD OR THE FACE OF THE CURB, WITH AN "S" FOR SEWER AND A "W" FOR WATER.
- DUCTILE IRON PIPES, INCLUDING FITTINGS, VALVES AND FIRE HYDRANTS, SHALL BE WRAPPED WITH POLYETHYLENE TUBING, DOUBLE BONDED AT EACH JOINT AND ELECTRICALLY ISOLATED. BONDING AND ANODE CONNECTIONS SHALL BE THOROUGHLY COATED WITH BITUMINOUS COATINGS.
- ALL DUCTILE IRON PIPE LESS THAN 12 INCHES AND FITTINGS SHALL HAVE CATHODIC PROTECTION USING TWO NO. 6 WIRES WITH 17 LB. MAGNESIUM ANODES EVERY 400 FEET AND 9 LB. MAGNESIUM ANODES AT EACH FITTING. ALL DUCTILE IRON PIPE 12 INCHES AND GREATER AND FITTINGS SHALL HAVE CATHODIC PROTECTION USING TWO NO. 6 WIRES WITH 17 LB. MAGNESIUM ANODES EVERY 300 FEET AND 9 LB. MAGNESIUM ANODES AT EACH FITTING.
- ALL PIPE MATERIAL, BACKFILL AND INSTALLATION SHALL CONFORM TO THE APPLICABLE SPECIFICATIONS OF THE CITY OF COLORADO SPRINGS, COLORADO DEPARTMENT OF TRANSPORTATION, EL PASO COUNTY DEPARTMENT OF TRANSPORTATION, COLORADO SPRINGS UTILITIES AND THE GEOTECHNICAL ENGINEER.
- COMPACTION TESTS SHALL BE 95% STANDARD PROCTOR AS DETERMINED BY ASTM D698, UNLESS OTHERWISE APPROVED BY THE DISTRICT OR HIGHER STANDARD AS IMPOSED BY ANOTHER AGENCIES HAVING RIGHT-OF-WAY JURISDICTION. THIS SHALL INCLUDE ALL VALVES, FIRE HYDRANT RUNS, WATER & SEWER SERVICE LINES AND MANHOLES. ALL REPORTS SHALL BE SUBMITTED TO THE DISTRICT FOR REVIEW AND APPROVAL.
- THE LOCATION OF ALL EXISTING UTILITIES SHOWN ON THE DRAWINGS ARE APPROXIMATE ONLY. THE LOCATION OF ALL UTILITIES SHALL BE FIELD VERIFIED PRIOR TO COMMENCING CONSTRUCTION ACTIVITIES. THE DISTRICT SHALL BE NOTIFIED OF ANY DEVIATIONS TO THE LINE AND/OR GRADE AS DEPICTED ON THE PLANS. CONTRACTOR SHALL SUBMIT TO THE DISTRICT AND THE ENGINEER OF RECORD A REPORT OF THE FIELD VERIFIED INFORMATION PRIOR TO THE START OF CONSTRUCTION.
- ALL BENDS SHALL BE FIELD STAKED PRIOR TO THE START OF CONSTRUCTION.
- BENDS, DEFLECTION & CUT PIPE LENGTHS SHALL BE USED TO HOLD HORIZONTAL ALIGNMENT OF SEWER AND WATER LINES TO NO MORE THAN 0.5' FROM THE DESIGNED ALIGNMENT. CONSTRUCTION STAKES TO BE AT 25' INTERVALS ALONG CURVES TO ASSURE LOCATION OF PIPE LINE CONSTRUCTION.
- AT ALL LOCATIONS WHERE CAP AND STUB IS NOTED ON DRAWINGS, PROVIDE A PLUG AT THE END OF THE PIPE JOINT NEAREST THE SPECIFIED STATION. PROVIDE A REVERSE ANCHOR AT ALL WATER LINE PLUGS.
- ALL UNUSED SALVAGED WATER UTILITY MATERIAL SHALL BE RETURNED TO THE METROPOLITAN DISTRICT AS REQUESTED.
- AT THE CONTRACTOR'S EXPENSE, ALL UTILITY MAINS SHALL BE SUPPORTED AND PROTECTED SUCH THAT THEY SHALL FUNCTION CONTINUOUSLY DURING CONSTRUCTION OPERATIONS. SHOULD A UTILITY MAIN FAIL AS A RESULT OF THE CONTRACTOR'S OPERATION, IT SHALL BE REPLACED IMMEDIATELY BY THE CONTRACTOR OR BY THE DISTRICT AT FULL COST OF LABOR AND MATERIALS TO THE CONTRACTOR/DEVELOPER.
- PUMPING OR BYPASS OPERATIONS SHALL BE REVIEWED AND APPROVED BY BOTH THE DISTRICT AND THE DISTRICT ENGINEER PRIOR TO EXECUTION.
- THE CONTRACTOR SHALL REPLACE OR REPAIR DAMAGE TO ALL SURFACE IMPROVEMENTS, INCLUDING BUT NOT LIMITED TO FENCES, LANDSCAPING, CURB AND GUTTER AND/OR ASPHALT THAT MAY BE CAUSED DURING CONSTRUCTION.
- ALL CONTRACTORS WORKING ON OR NEAR A WATER OR SEWER FACILITY (TO INCLUDE SERVICE LINES) SHALL HAVE LIABILITY INSURANCE NAMING THE DISTRICT AS AN ADDITIONAL INSURED AND SHALL PROVIDE A CURRENT COPY OF WORKERS COMPENSATION INSURANCE ON FILE WITH THE DISTRICT. NO WORK CAN PROCEED WITHOUT CURRENT CERTIFICATES ON FILE AT THE DISTRICTS' OFFICE.
- THE CONTRACTOR SHALL NOTIFY THE DISTRICT AND ALL AFFECTED UTILITY COMPANIES ADJACENT TO THE PROPOSED UTILITY CONSTRUCTION A MINIMUM OF 48 HOURS AND A MAXIMUM OF 96 HOURS PRIOR TO THE START OF CONSTRUCTION. A WEEKLY CONSTRUCTION MEETING SHALL BE REQUIRED WITH THE CONTRACTOR, DISTRICT ENGINEER AND ALL OTHER PARTIES AS DEEMED NECESSARY BY THE DISTRICT.
- COMMENCEMENT OF CONSTRUCTION OF WATER/SEWER SYSTEMS WITHIN METROPOLITAN DISTRICT:
 - PRIOR TO THE START OF CONSTRUCTION, A PRE-CONSTRUCTION MEETING IS REQUIRED. A MINIMUM OF 48 HOURS IN ADVANCE OF COMMENCEMENT OF WORK. A REPRESENTATIVE OF THE OWNER OR DEVELOPER, A REPRESENTATIVE OF THE CONTRACTOR AND DESIGN ENGINEER ARE REQUIRED TO ATTEND. CONTACT THE DISTRICT TO SCHEDULE THE PRE-CONSTRUCTION MEETING. NO PRE-CONSTRUCTION MEETING CAN BE SCHEDULED PRIOR TO FOUR (4) SIGNED/APPROVED PLAN SETS ARE RECEIVED BY THE DISTRICT.
 - THE CONTRACTOR IS REQUIRED TO NOTIFY THE DISTRICT A MINIMUM OF 48 HOURS AND A MAXIMUM OF 2 WEEKS PRIOR TO THE START OF CONSTRUCTION. THE CONTRACTOR SHALL ALSO NOTIFY AFFECTED UTILITY COMPANIES AT LEAST 48 HOURS PRIOR TO THE START OF CONSTRUCTION ADJACENT TO THE KNOWN UTILITY LINES.
- TESTING OF FACILITIES:
 - THE CONTRACTOR SHALL NOTIFY THE DISTRICT A MINIMUM OF 48 HOURS AND A MAXIMUM OF 96 HOURS PRIOR TO THE START OF ANY TESTING.
 - ALL SECTIONS OF WATER LINE ARE TO MEET THE FOLLOWING PRESSURE TESTING REQUIREMENTS
 - TEST 100 % OF ALL LINES
 - MUST PASS PRESSURE TEST TO 200 PSI FOR TWO HOURS (UNLESS OTHERWISE APPROVED ON THE PLANS).
 - ALL SANITARY SEWER FACILITIES ARE TO MEET THE FOLLOWING TESTING REQUIREMENTS
 - ALL LINES SHALL BE JET CLEANED PRIOR TO VACUUM OR PRESSURE TESTING
 - ALL MANHOLES SHALL BE VACUUM TESTED WITH DISTRICT STAFF PRESENT PRIOR TO CCTV INSPECTION.
 - SEWER MAINS TO BE PRESSURE TEST PRIOR TO CCTV INSPECTION
 - ALL LINES SHALL BE CCTV INSPECTED AND VIDEO SHALL TO BE SUBMITTED TO THE DISTRICT FOR REVIEW AND APPROVAL.
- PRELIMINARY ACCEPTANCE SHALL BE DEFINED AS THE POINT IN TIME THAT THE DISTRICT ACCEPTS THE FACILITY FOR USE. ALL SURFACE IMPROVEMENTS AND RESTORATION SHALL BE COMPLETED WITHIN 30 DAYS OF COMMENCEMENT. SHOULD THE CONTRACTOR FAIL TO COMPLETE ALL SURFACE IMPROVEMENTS AND RESTORATION WITHIN 30 DAYS OF COMMENCEMENT OF SERVICE, THE DISTRICT, AT THEIR DISCRETION, MAY ELECT TO COMPLETE THE IMPROVEMENTS AT THE CONTRACTORS COST.
- FINAL ACCEPTANCE BY THE DISTRICT OF ANY LINE OR SYSTEM SHALL NOT OCCUR UNTIL COMPLETION OF FINAL ASPHALT LAYERS AND/OR FINAL COMPLETION AND/OR RESTORATION OF ALL SURFACE IMPROVEMENTS. THE WARRANTY PERIOD FOR ALL FACILITIES PRIOR TO FINAL ACCEPTANCE SHALL BE 24 MONTHS COMMENCING AFTER PRELIMINARY ACCEPTANCE.
- ACCEPTANCE:
 - THE DISTRICT MAY GIVE PRELIMINARY ACCEPTANCE ONCE ALL OF THE TESTS ON ALL THE LINES HAVE BEEN COMPLETED AND A WALK-THRU HAS OCCURRED.
 - A SECOND ACCEPTANCE MAY OCCUR ONCE FIRST LIFT OF ASPHALT GOES DOWN AND A SECOND WALK-THRU OF THE SYSTEM OCCURS. IF ALL FACILITIES ARE CLEAN AND ACCESSIBLE, A FINAL ACCEPTANCE MAY OCCUR (THE DISTRICT MAY REQUIRE CLEANING AND RE-VIDEO OF THE SYSTEM, DEPENDING ON THE SEVERITY OF THE CONTAMINATION).
- ALL WATER AND SEWER MAINS, INCLUDING SERVICE LINES, SHALL HAVE "AS-BUILT" DRAWINGS PREPARED AND APPROVED PRIOR TO PRELIMINARY ACCEPTANCE BY THE DISTRICT.
- ALL COMMERCIAL/BUSINESS DEVELOPMENTS SHALL HAVE AN EIGHT INCH (MIN.) WATER MAIN LOOPED THROUGH THE PROPOSED PROPERTY WITH GATE VALVES LOCATED WHERE THE MAIN ENTERS THE PROPERTY LINE. AN EIGHT INCH SEWER MAIN SHALL BE INSTALLED FOR SERVICE TO COMMERCIAL/BUSINESS DEVELOPMENTS, AND A MANHOLE SHALL BE LOCATED WHERE THE MAIN ENTERS THE PROPERTY. THE END OF THE MAINS SHALL BE MARKED WITH THE APPROPRIATE COLORED CARBONITE MARKER ALONG WITH TRACER WIRE.
- AFTER REVIEW AND APPROVAL OF PLANS FOR THE EXTENSION OF LINES, FACILITIES AND/OR SERVICES, CONSTRUCTION MUST BE COMMENCED WITHIN 18 MONTHS FOR RESIDENTIAL SUBDIVISIONS AND 12 MONTHS FOR ANY COMMERCIAL INSTALLATIONS.
- INSPECTION FEES: CALL THE DISTRICT (719-495-2500) FOR FEE SCHEDULE.

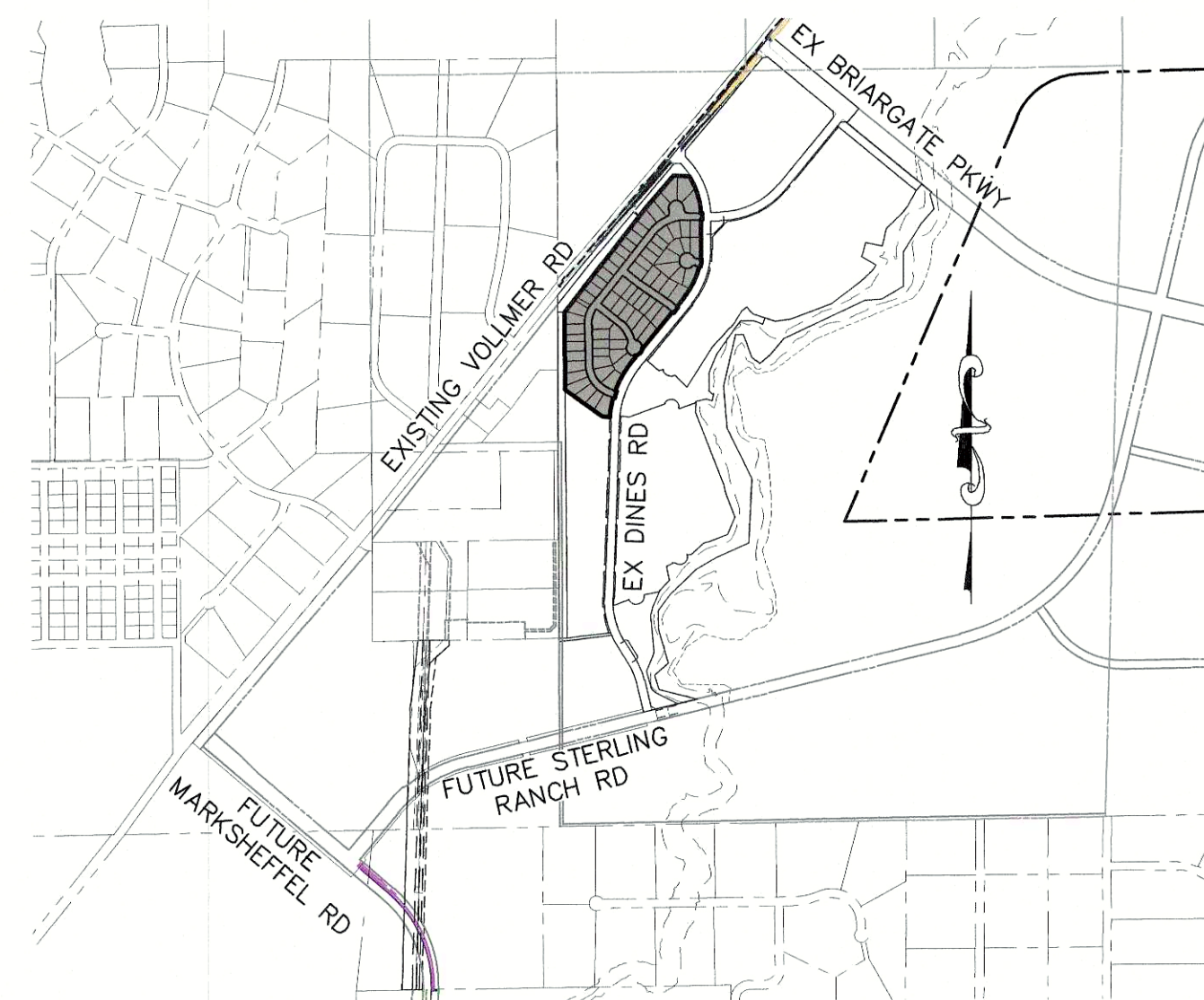
HOMESTEAD AT STERLING RANCH FILING NO. 1

COUNTY OF EL PASO, STATE OF COLORADO WATER SYSTEM PLAN (INCLUDING UTILITY SERVICE PLAN)

OCTOBER 2018



VICINITY MAP
N.T.S.



SITE MAP
N.T.S.

BENCHMARKS

- THE TOP OF AN ALUMINUM SURVEYORS CAP, STAMPED "9853", AT THE SOUTHEAST BOUNDARY CORNER OF BARBARICK SUBDIVISION
NORTHING = 411416.273
EASTING = 235167.071
ELEVATION = 7023.42
- THE TOP OF A RED PLASTIC SURVEYORS CAP, ILLEGIBLE, AT THE NORTHWEST BOUNDARY CORNER OF PAWNEE RANCHEROS SUBDIVISION
NORTHING = 410095.404
EASTING = 235052.131
ELEVATION = 7000.40
- THE TOP OF A RED PLASTIC SURVEYORS CAP, STAMPED "38141", AT THE SOUTHWEST BOUNDARY CORNER OF BARBARICK SUBDIVISION
NORTHING = 411399.962
EASTING = 233849.817
ELEVATION = 7030.82

AS-BUILTS
06/24/2022
SF-17-025



AGENCIES	
OWNER/DEVELOPER:	SR LAND, LLC 20 BOULDER CRESCENT, SUITE 201 COLORADO SPRINGS, CO 80903 JIM MORLEY (719) 471-1742
CIVIL ENGINEER:	M & S CIVIL CONSULTANTS, INC. 20 BOULDER CRESCENT, SUITE 110 COLORADO SPRINGS, CO 80903 VIRGIL A. SANCHEZ P.E. (719) 955-5485
COUNTY ENGINEERING:	EL PASO COUNTY PLANNING AND COMMUNITY DEVELOPMENT 2880 INTERNATIONAL CIRCLE, SUITE 110 COLORADO SPRINGS, CO 80910 JEFF RICE, P.E. (719) 520-6300
TRAFFIC ENGINEERING:	EL PASO COUNTY DEPARTMENT OF PUBLIC WORKS 3275 AKERS DRIVE COLORADO SPRINGS, CO 80922 JENNIFER IRVINE, P.E. (719) 520-6460
WATER RESOURCES:	STERLING RANCH METRO DISTRICT ENGINEERS JDS-HYDRO CONSULTANTS 545 E. PIKES PEAK AVE., SUITE 300 COLORADO SPRINGS, CO 80903 JOHN MCGINN (719) 668-8769
FIRE DISTRICT:	BLACK FOREST FIRE PROTECTION DISTRICT 11445 TEACHTON ROAD COLORADO SPRINGS, CO 80908 CHIEF BRYAN JACK (719) 495-4300
GAS DEPARTMENT:	COLORADO SPRINGS UTILITIES 7710 DURANT DR. COLORADO SPRINGS, CO 80947 TIM WENDT (719) 668-3556
ELECTRIC DEPARTMENT:	MOUNTAIN VIEW ELECTRIC 11140 E. WOODMEN ROAD FALCON, CO 80831 (719) 495-2283
COMMUNICATIONS:	QWEST COMMUNICATIONS (U.N.C.C. LOCATORS) (800) 922-1987 AT&T (LOCATORS) (719) 635-3674

WATER & SEWER MAIN EXTENTIONS

ANY CHANGES OR ALTERATIONS AFFECTING THE GRADE, ALIGNMENT, ELEVATION AND/OR DEPTH OF COVER OF ANY WATER OR SEWER MAINS OR OTHER APPURTENANCE SHOWN ON THIS DRAWING SHALL BE THE RESPONSIBILITY OF THE OWNER/DEVELOPER. THE OWNER/DEVELOPER SHALL BE RESPONSIBLE FOR ALL OPERATIONAL DAMAGES AND DEFECTS IN INSTALLATION AND MATERIAL FOR MAINS AND SERVICES FROM THE DATE OF APPROVAL UNTIL FINAL ACCEPTANCE IS ISSUED.

SIGNED: *James F. Morley* DATE: 10/24/18
OWNER/DEVELOPER

PRINT NAME: JAMES F. MORLEY

ADDRESS: 20 BOULDER CRESCENT, SUITE 200
COLORADO SPRINGS, CO 80903

DISTRICT APPROVALS

THE STERLING RANCH METROPOLITAN DISTRICT RECOGNIZES THE DESIGN ENGINEER AS HAVING RESPONSIBILITY FOR THE DESIGN AND HAS LIMITED ITS SCOPE OF REVIEW ACCORDINGLY.

STERLING RANCH METROPOLITAN DISTRICT
WATER DESIGN APPROVAL

DATE: 11/15/18 BY: *J. Morley*

IN CASE OF ERRORS OR OMISSIONS WITH THE WATER DESIGN AS SHOWN ON THIS DOCUMENT THE STANDARDS AS DEFINED IN THE "RULES AND REGULATIONS FOR INSTALLATION OF WATER MAINS AND SERVICES" SHALL RULE.

APPROVAL EXPIRES 180 DAYS FROM DESIGN APPROVAL.

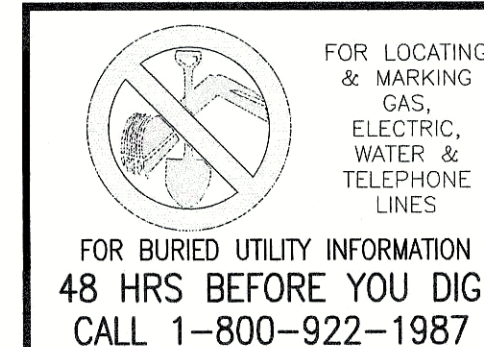
FIRE AUTHORITY APPROVAL

THE NUMBER OF FIRE HYDRANTS AND HYDRANT LOCATIONS SHOWN ON THIS WATER INSTALLATION PLAN ARE CORRECT AND ADEQUATE TO SATISFY THE FIRE PROTECTION REQUIREMENTS AS SPECIFIED BY THE BLACK FOREST FIRE PROTECTION DISTRICT SERVING THE PROPERTY NOTED ON THE PLANS.

BY: *B. J. Fine* Fire Chief DATE: 11/15/18
B.F.F.P.D.

SHEET INDEX

SHEET 1	TITLE SHEET
SHEET 2	WATER DISTRICT MAIN PLAN
SHEET 3	WATER DISTRICT MAIN PLAN & PROFILE
SHEET 4	UTILITY SERVICE PLAN



HOMESTEAD AT STERLING RANCH FILING NO. 1

WATER PLANS

PROJECT NO. 09-005 SCALE: HORIZONTAL: N/A VERTICAL: N/A DATE: 11/10/2017 SHEET 1 OF 4 W101

DESIGNED BY: VAS DRAWN BY: EY CHECKED BY: GW

20 BOULDER CRESCENT, SUITE 110
COLORADO SPRINGS, CO 80903
PHONE: 719.955.5485

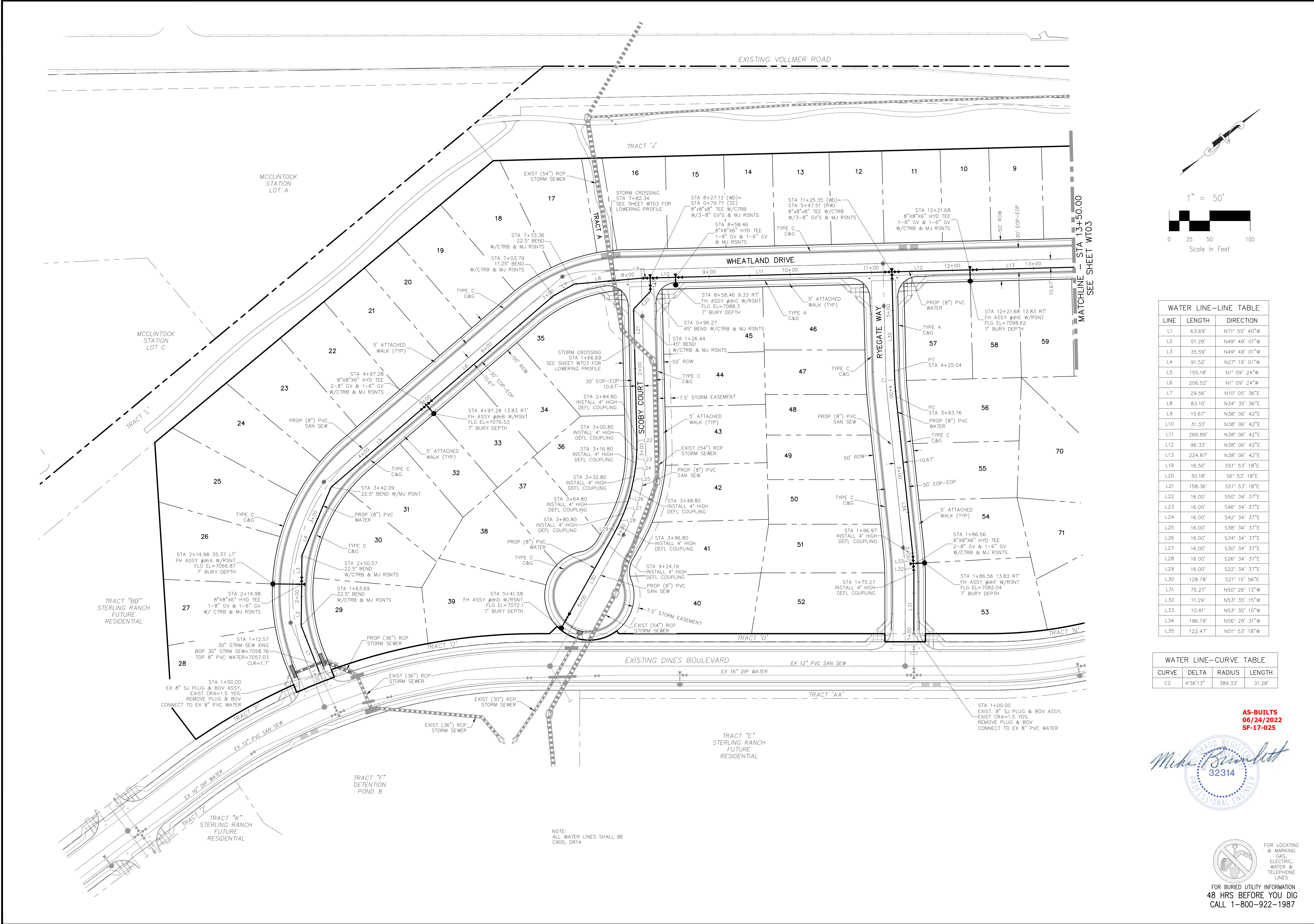
FOR AND ON BEHALF OF
M&S CIVIL CONSULTANTS, INC.

VIRGIL A. SANCHEZ, COLORADO P.E. NO. 37160

NO. DATE: BY: DESCRIPTION: APPROVED BY: DATE:

THE ENGINEER PREPARING THESE PLANS WILL NOT BE RESPONSIBLE, OR LIABLE FOR, UNAUTHORIZED CHANGES TO OR REVISIONS TO THESE PLANS. ALL CHANGES TO THESE PLANS MUST BE IN WRITING AND MUST BE APPROVED BY THE PREPARER OF THESE PLANS.

CAUTION



LINE	LENGTH	DIRECTION
L1	63.69'	N71° 55' 40"W
L2	51.29'	N49° 49' 01"W
L3	35.59'	N49° 49' 01"W
L4	91.52'	N27° 19' 01"W
L5	155.18'	N1° 09' 24"W
L6	206.52'	N1° 09' 24"W
L7	29.56'	N10° 05' 36"E
L8	83.10'	N34° 35' 36"E
L9	10.67'	N38° 06' 42"E
L10	31.33'	N38° 06' 42"E
L11	266.89'	N38° 06' 42"E
L12	96.33'	N38° 06' 42"E
L13	224.87'	N38° 06' 42"E
L19	16.50'	S51° 53' 18"E
L20	30.18'	S6° 53' 18"E
L21	158.36'	S51° 53' 18"E
L22	16.00'	S50° 34' 37"E
L23	16.00'	S46° 34' 37"E
L24	16.00'	S42° 34' 37"E
L25	16.00'	S38° 34' 37"E
L26	16.00'	S34° 34' 37"E
L27	16.00'	S30° 34' 37"E
L28	16.00'	S26° 34' 37"E
L29	16.00'	S22° 34' 37"E
L30	128.78'	S21° 15' 56"E
L31	75.27'	N50° 26' 12"W
L32	11.29'	N53° 35' 15"W
L33	10.41'	N53° 35' 15"W
L34	196.79'	N56° 29' 31"W
L35	122.47'	N51° 53' 18"W

CURVE	DELTA	RADIUS	LENGTH
C2	4°36'13"	389.33'	31.28'

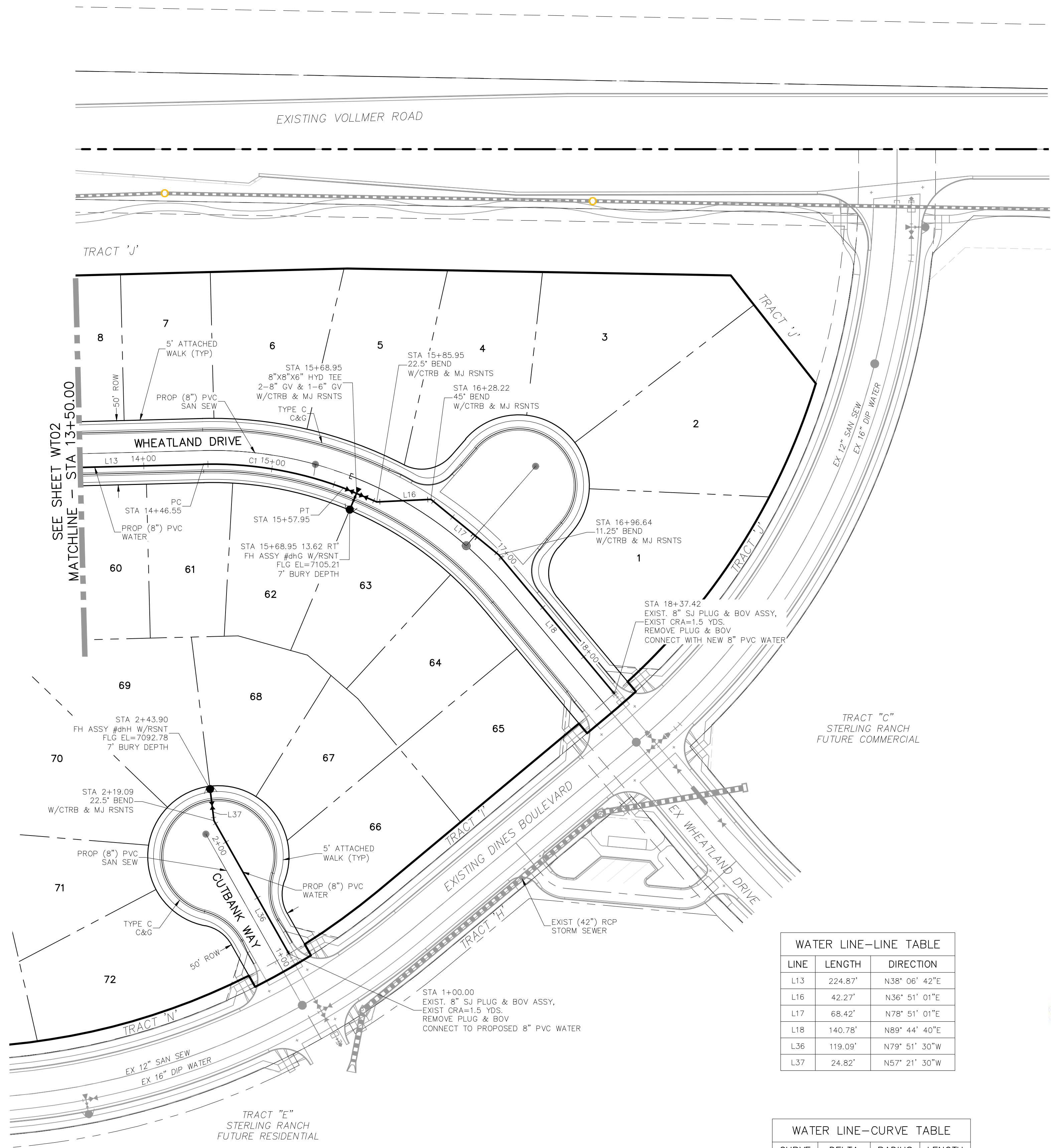
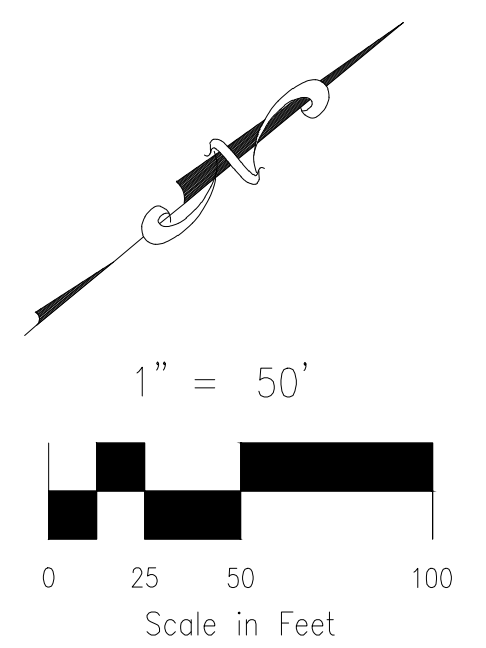
NOTE:
 ALL WATER LINES SHALL BE
 C900, DR14

AS-BUILTS
06/24/2022
SF-17-025

Marcel A. Sanchez
 32314
 PROFESSIONAL ENGINEER

FOR LOCATING & MARKING GAS, ELECTRIC, WATER & TELEPHONE LINES

FOR BURIED UTILITY INFORMATION
 48 HRS BEFORE YOU DIG
 CALL 1-800-922-1987



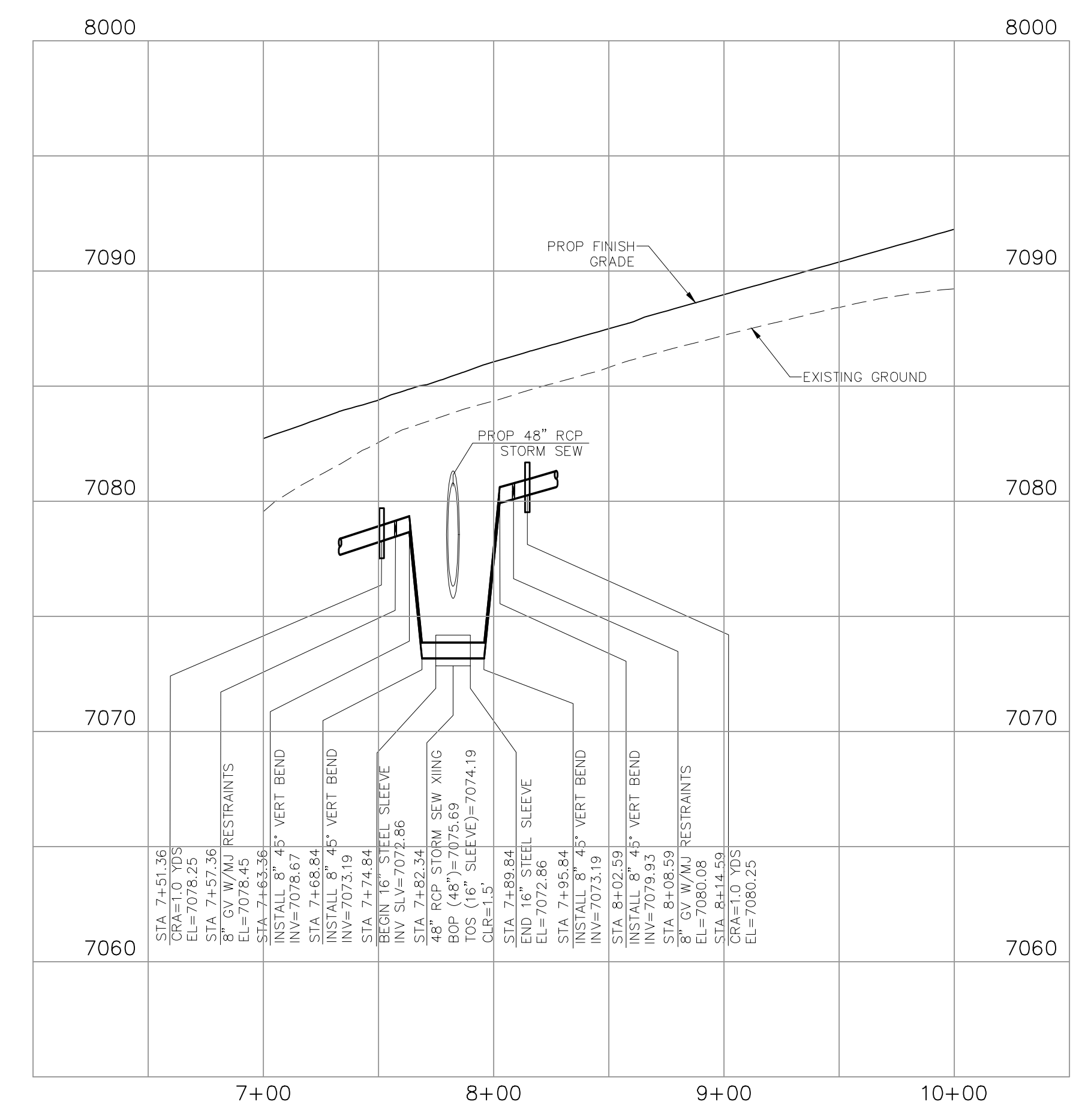
LINE	LENGTH	DIRECTION
L13	224.87'	N38° 06' 42"E
L16	42.27'	N36° 51' 01"E
L17	68.42'	N78° 51' 01"E
L18	140.78'	N89° 44' 40"E
L36	119.09'	N79° 51' 30"W
L37	24.82'	N57° 21' 30"W

CURVE	DELTA	RADIUS	LENGTH
C1	22°03'35"	289.33'	111.40'

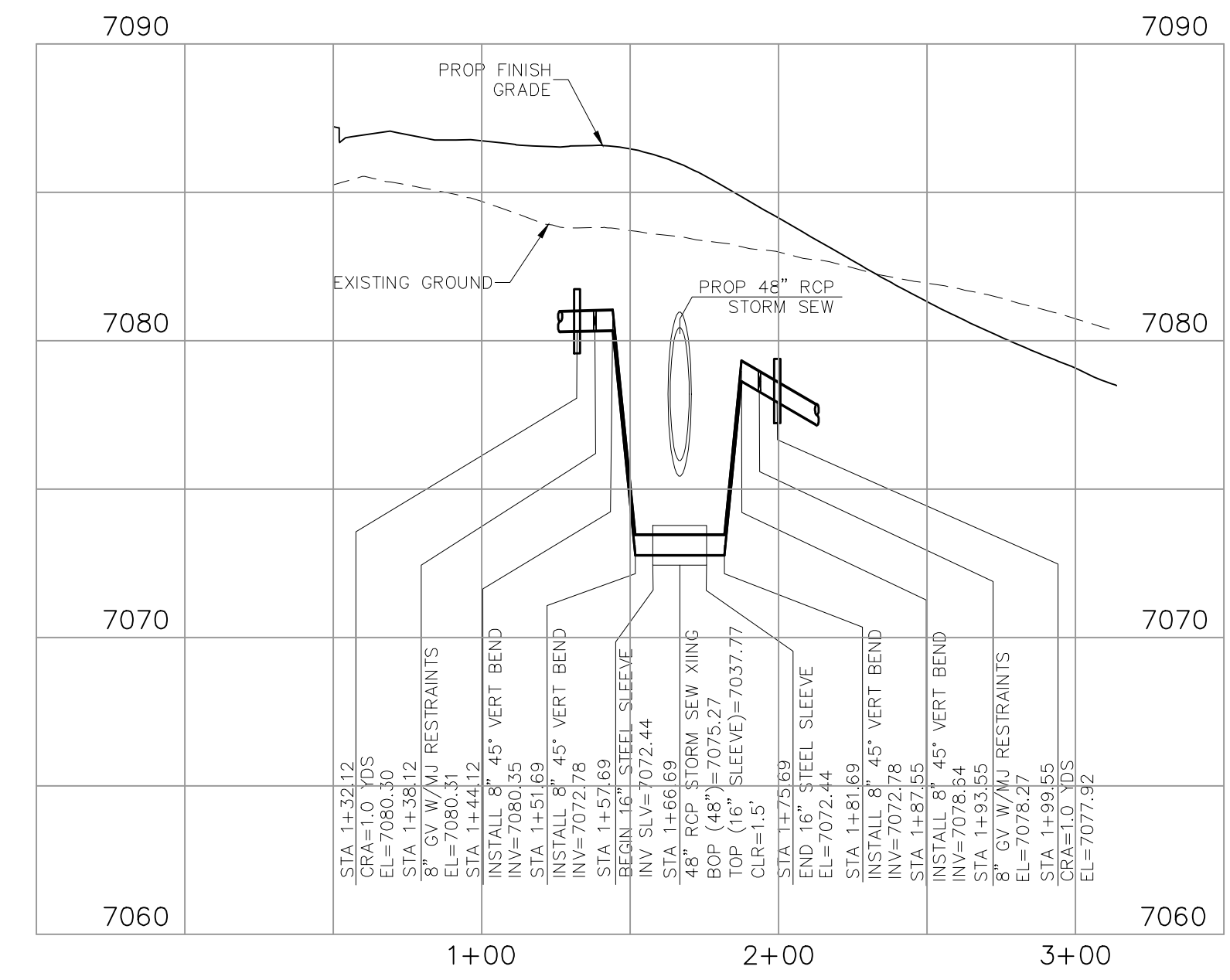
AS-BUILTS
06/24/2022
SF-17-025



NOTE:
ALL WATER LINES SHALL BE
C900, DR14



WATER LOWERING #1
48" STORM SEWER

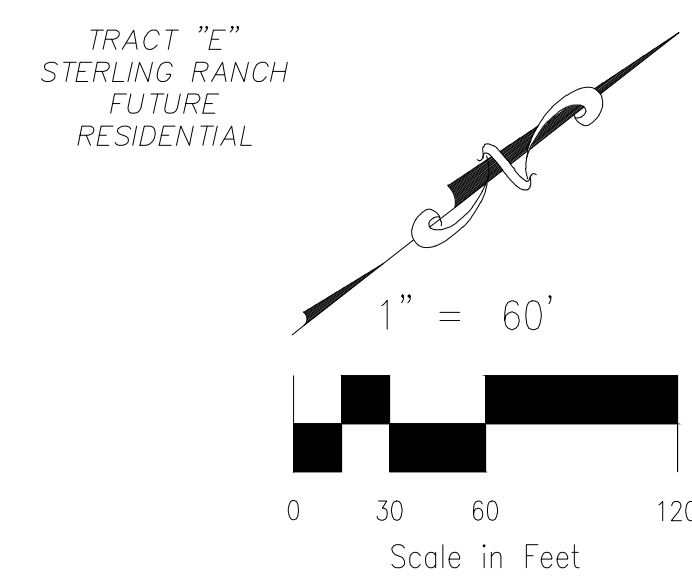
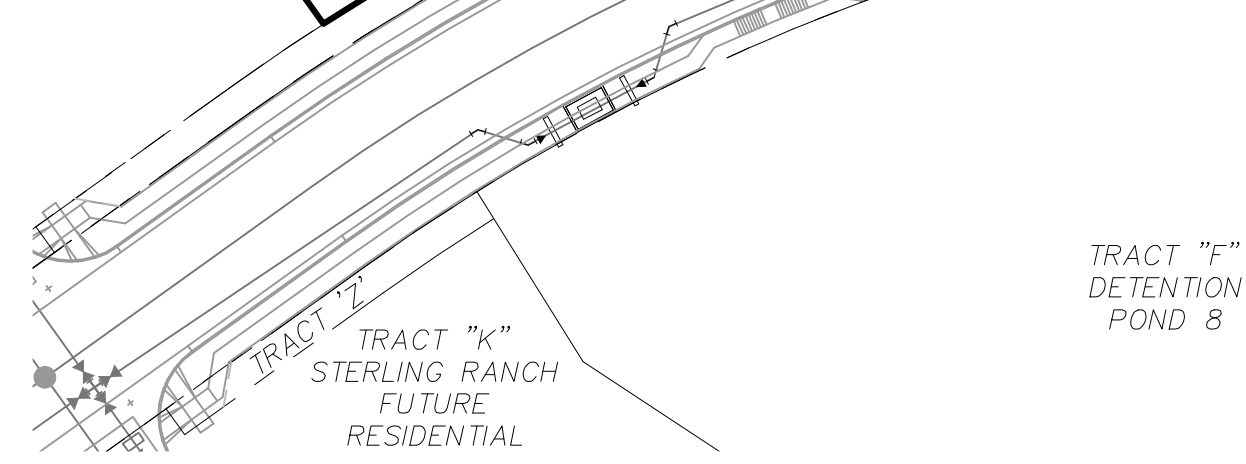
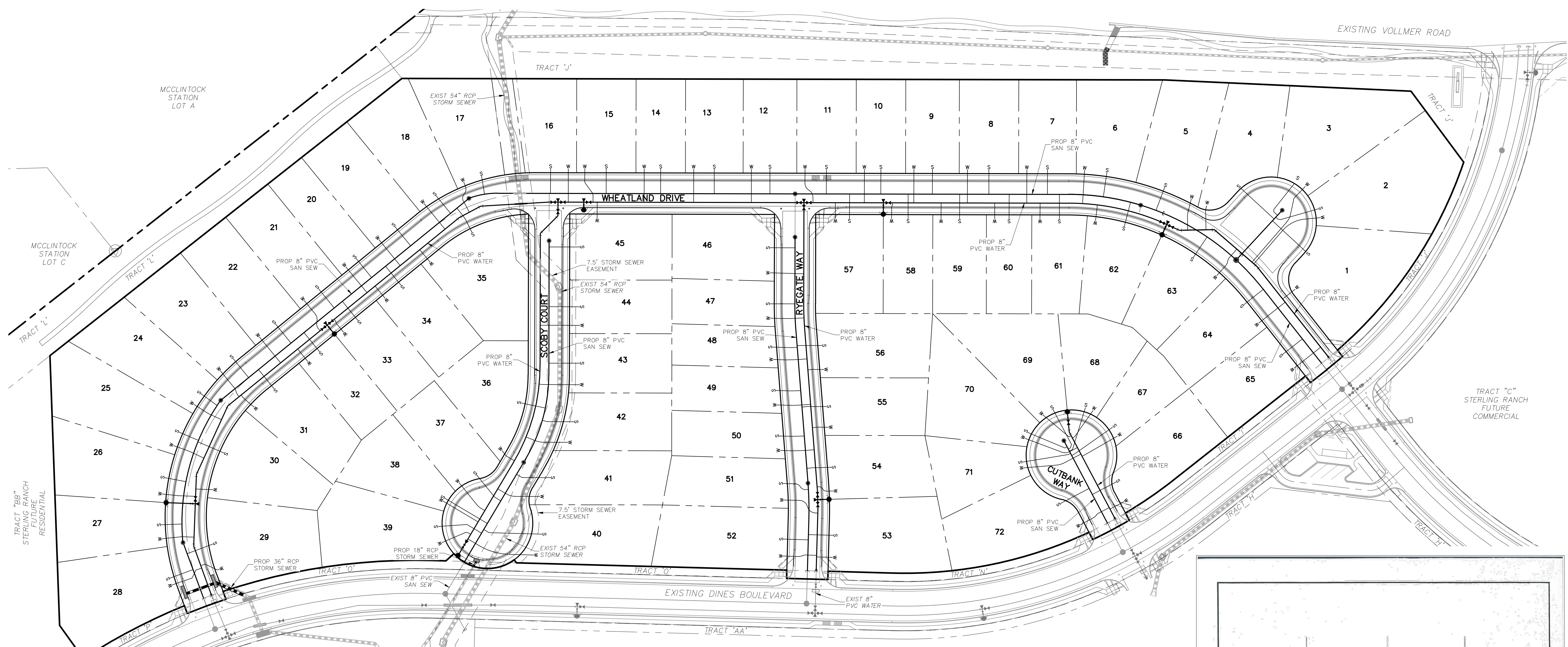


WATER LOWERING #2
48" RCP STORM SEW



WATER PLANS	
PROJECT NO. 09-005	DATE: 11/10/2017
DESIGNED BY: VAS	SCALE: HORIZONTAL: 1"=50'
DRAWN BY: EY	VERTICAL: 1"=5'
CHECKED BY: GW	
WT03	
<p>CIVIL CONSULTANTS, INC.</p>	
<p>20 BOULDER CRESCENT, SUITE 110 COLORADO SPRINGS, CO 80903 PHONE: 719.555.5485</p>	
<p>FOR AND ON BEHALF OF M&S CIVIL CONSULTANTS, INC.</p>	
REVISIONS:	APPROVED BY: DATE:
NO. DATE: BY: DESCRIPTION:	
<p>THE ENGINEER PREPARING THESE PLANS WILL NOT BE RESPONSIBLE OR LIABLE FOR UNAUTHORIZED CHANGES TO OR USES OF THESE PLANS. ALL CHANGES TO THE PLANS MUST BE IN WRITING AND MUST BE APPROVED BY THE PREPARER OF THESE PLANS.</p>	
CAUTION	

File: 0:\00005A\Sterling Ranch No 2\Map\Const Draw\Utility Service Plans\UT01.dwg Plotstamp: 11/14/2018 5:00 PM

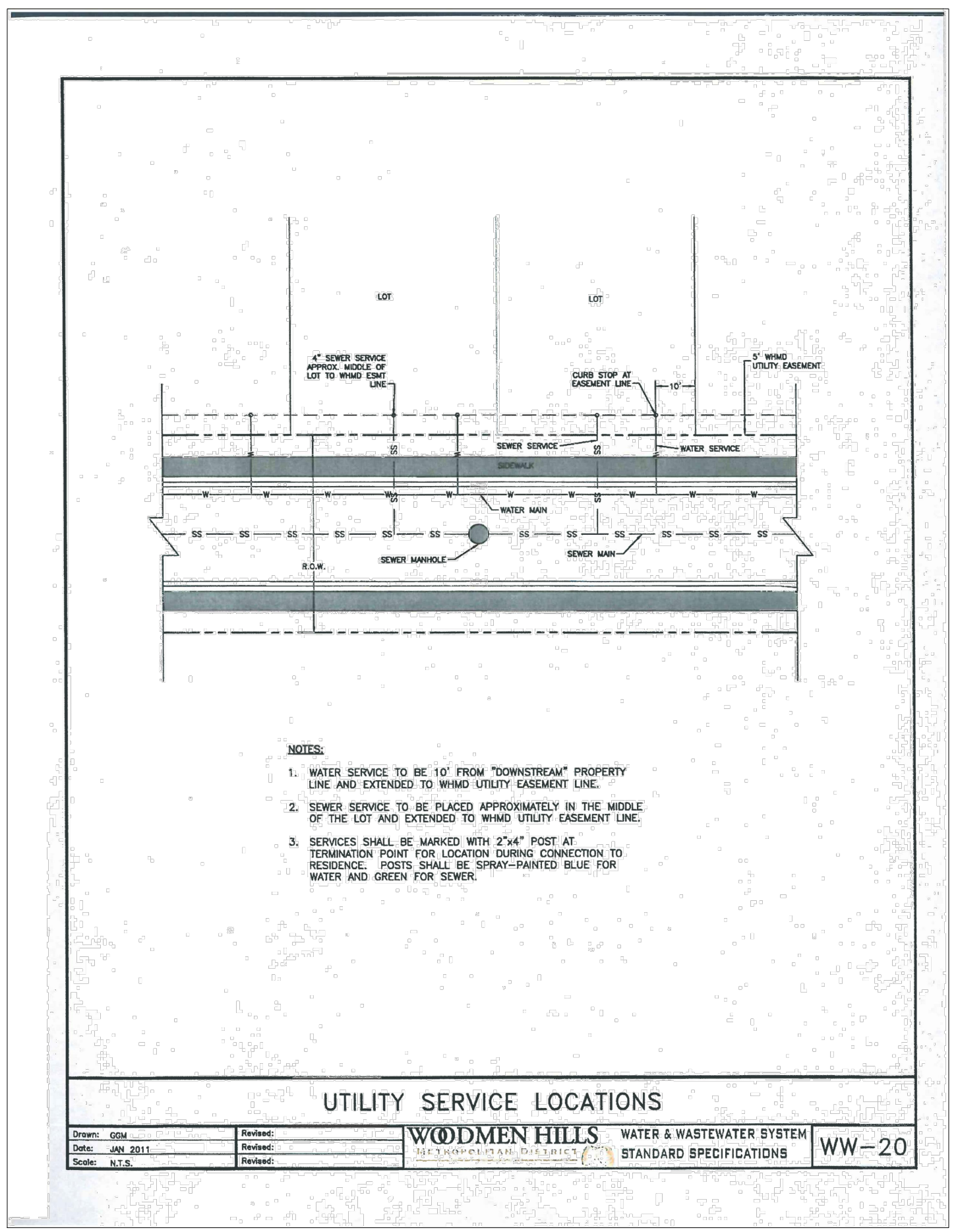


AS-BUILTS
06/24/2022
SF-17-025

Mike Bennett
32314
PROFESSIONAL ENGINEER

GENERAL NOTES:

1. THE CONTRACTOR IS RESPONSIBLE FOR ANY DAMAGE TO ANY UTILITY FACILITIES AS A RESULT OF HIS ACTIONS. THE CONTRACTOR SHALL MAKE ALL THE REQUIRED REPAIRS IMMEDIATELY TO THE SATISFACTION OF THE STERLING RANCH WATER DISTRICT.
2. ALL UTILITY SERVICES WHICH CROSS THE 54" STORM SEWER MAIN (LOTS 40, 41, 42, 43, AND 44) MUST BE SLEEVED.



- NOTES:**
1. WATER SERVICE TO BE 1' FROM "DOWNSTREAM" PROPERTY LINE AND EXTENDED TO WHIM UTILITY EASEMENT LINE.
 2. SEWER SERVICE TO BE PLACED APPROXIMATELY IN THE MIDDLE OF THE LOT AND EXTENDED TO WHIM UTILITY EASEMENT LINE.
 3. SERVICES SHALL BE MARKED WITH 2"x4" POST AT TERMINATION POINT FOR LOCATION DURING CONNECTION TO RESIDENCE. POSTS SHALL BE SPRAY-PAINTED BLUE FOR WATER AND GREEN FOR SEWER.

WOODMEN HILLS WATER & WASTEWATER SYSTEM
STANDARD SPECIFICATIONS WW-20

FOR LOCATING & MARKING GAS, ELECTRIC, WATER & TELEPHONE LINES

FOR BURIED UTILITY INFORMATION
48 HRS BEFORE YOU DIG
CALL 1-800-922-1987

HOMESTEAD AT STERLING RANCH FILING NO. 1

UTILITY SERVICE PLANS

PROJECT NO. 09-005 DATE: 11/14/2018

DESIGNED BY: VAS SCALE: HORIZONTAL: 1"=60' VERTICAL: N/A

DRAWN BY: EY CHECKED BY: GW

SHEET 4 OF 4 UT01

20 BOULDER CRESCENT, SUITE 110
COLORADO SPRINGS, CO 80903
PHONE: 719.555.4485

CIVIL CONSULTANTS, INC.

FOR AND ON BEHALF OF M&S CIVIL CONSULTANTS, INC.

MICHELLE A. SANCHEZ, COLORADO P.E. NO. 371760

APPROVED BY: DATE:

BY: DESCRIPTION:

NO. DATE:

REVISIONS:

THE ENGINEER PREPARING THESE PLANS WILL NOT BE RESPONSIBLE OR LIABLE FOR UNAUTHORIZED CHANGES TO OR USES OF THESE PLANS. ALL CHANGES TO THE PLANS MUST BE IN WRITING AND MUST BE APPROVED BY THE PREPARER OF THESE PLANS.

CAUTION

GENERAL NOTES

- ALL UTILITY CONSTRUCTION TO BE CONDUCTED IN CONFORMANCE WITH THE CURRENT WOODMEN HILLS METROPOLITAN DISTRICT (WHMD, THE DISTRICT) SPECIFICATIONS.
- ALL PLANS ON THE JOB SITE SHALL BE SIGNED BY THE DISTRICT AND THE DISTRICT'S ENGINEER. ANY REVISION TO THE PLANS SHALL BE SO NOTED WITH THE OLD DRAWING MARKED NOT VALID.
- ALL STATIONING IS CENTER LINE UNLESS OTHERWISE NOTED. ALL ELEVATIONS ARE CENTER LINE UNLESS OTHERWISE NOTED.
- ALL MATERIALS AND WORKMANSHIP SHALL BE SUBJECT TO INSPECTION BY THE DISTRICT. THE DISTRICT RESERVES THE RIGHT TO ACCEPT OR REJECT ANY SUCH MATERIALS AND WORKMANSHIP THAT DOES NOT CONFORM TO ITS STANDARDS AND SPECIFICATIONS.
- ALL OVER-LOT GRADING MUST BE COMPLETED TO WITHIN ONE (1) FOOT OF FINAL GRADE PRIOR TO INSTALLATION OF WATER AND WASTEWATER INFRASTRUCTURE.
- ALL WATER AND SEWER SERVICE LOCATIONS SHALL BE CLEARLY MARKED ON EITHER THE CURB HEAD OR THE FACE OF THE CURB, WITH AN "S" FOR SEWER AND A "W" FOR WATER.
- DUCTILE IRON PIPES, INCLUDING FITTINGS, VALVES AND FIRE HYDRANTS, SHALL BE WRAPPED WITH POLYETHYLENE TUBING, DOUBLE BONDED AT EACH JOINT AND ELECTRICALLY ISOLATED. BONDING AND ANODE CONNECTIONS SHALL BE THOROUGHLY COATED WITH BITUMINOUS COATINGS.
- ALL DUCTILE IRON PIPE LESS THAN 12 INCHES AND FITTINGS SHALL HAVE CATHODIC PROTECTION USING TWO NO. 6 WIRES WITH 17 LB. MAGNESIUM ANODES EVERY 400 FEET AND 9 LB. MAGNESIUM ANODES AT EACH FITTING. ALL DUCTILE IRON PIPE 12 INCHES AND GREATER AND FITTINGS SHALL HAVE CATHODIC PROTECTION USING TWO NO. 6 WIRES WITH 17 LB. MAGNESIUM ANODES EVERY 300 FEET AND 9 LB. MAGNESIUM ANODES AT EACH FITTING.
- ALL PIPE MATERIAL, BACKFILL AND INSTALLATION SHALL CONFORM TO THE APPLICABLE SPECIFICATIONS OF THE CITY OF COLORADO SPRINGS, COLORADO DEPARTMENT OF TRANSPORTATION, EL PASO COUNTY DEPARTMENT OF TRANSPORTATION, COLORADO SPRINGS UTILITIES AND THE GEOTECHNICAL ENGINEER.
- COMPACTION TESTS SHALL BE 95% STANDARD PROCTOR AS DETERMINED BY ASTM D698, UNLESS OTHERWISE APPROVED BY THE DISTRICT OR HIGHER STANDARD AS IMPOSED BY ANOTHER AGENCIES HAVING RIGHT-OF-WAY JURISDICTION. THIS SHALL INCLUDE ALL VALVES, FIRE HYDRANT RUNS, WATER & SEWER SERVICE LINES AND MANHOLES. ALL REPORTS SHALL BE SUBMITTED TO THE DISTRICT FOR REVIEW AND APPROVAL.
- THE LOCATION OF ALL EXISTING UTILITIES SHOWN ON THE DRAWINGS ARE APPROXIMATE ONLY. THE LOCATION OF ALL UTILITIES SHALL BE FIELD VERIFIED PRIOR TO COMMENCING CONSTRUCTION ACTIVITIES. THE DISTRICT SHALL BE NOTIFIED OF ANY DEVIATIONS TO THE LINE AND/OR GRADE AS DEPICTED ON THE PLANS. CONTRACTOR SHALL SUBMIT TO THE DISTRICT AND THE ENGINEER OF RECORD A REPORT OF THE FIELD VERIFIED INFORMATION PRIOR TO THE START OF CONSTRUCTION.
- ALL BENDS SHALL BE FIELD STAKED PRIOR TO THE START OF CONSTRUCTION.
- BENDS, DEFLECTION & CUT PIPE LENGTHS SHALL BE USED TO HOLD HORIZONTAL ALIGNMENT OF SEWER AND WATER LINES TO NO MORE THAN 0.5' FROM THE DESIGNED ALIGNMENT. CONSTRUCTION STAKES TO BE AT 25' INTERVALS ALONG CURVES TO ASSURE LOCATION OF PIPE LINE CONSTRUCTION.
- AT ALL LOCATIONS WHERE CAP AND STUB IS NOTED ON DRAWINGS, PROVIDE A PLUG AT THE END OF THE PIPE JOINT NEAREST THE SPECIFIED STATION. PROVIDE A REVERSE ANCHOR AT ALL WATER LINE PLUGS.
- ALL UNUSED SALVAGED WATER UTILITY MATERIAL SHALL BE RETURNED TO THE METROPOLITAN DISTRICT AS REQUESTED.
- AT THE CONTRACTOR'S EXPENSE, ALL UTILITY MAINS SHALL BE SUPPORTED AND PROTECTED SUCH THAT THEY SHALL FUNCTION CONTINUOUSLY DURING CONSTRUCTION OPERATIONS. SHOULD A UTILITY MAIN FAIL AS A RESULT OF THE CONTRACTOR'S OPERATION, IT SHALL BE REPLACED IMMEDIATELY BY THE CONTRACTOR OR BY THE DISTRICT AT FULL COST OF LABOR AND MATERIALS TO THE CONTRACTOR/DEVELOPER.
- PUMPING OR BYPASS OPERATIONS SHALL BE REVIEWED AND APPROVED BY BOTH THE DISTRICT AND THE DISTRICT ENGINEER PRIOR TO EXECUTION.
- THE CONTRACTOR SHALL REPLACE OR REPAIR DAMAGE TO ALL SURFACE IMPROVEMENTS, INCLUDING BUT NOT LIMITED TO FENCES, LANDSCAPING, CURB AND GUTTER AND/OR ASPHALT THAT MAY BE CAUSED DURING CONSTRUCTION.
- ALL CONTRACTORS WORKING ON OR NEAR A WATER OR SEWER FACILITY (TO INCLUDE SERVICE LINES) SHALL HAVE LIABILITY INSURANCE NAMING THE DISTRICT AS AN ADDITIONAL INSURED AND SHALL PROVIDE A CURRENT COPY OF WORKERS COMPENSATION INSURANCE ON FILE WITH THE DISTRICT. NO WORK CAN PROCEED WITHOUT CURRENT CERTIFICATES ON FILE AT THE DISTRICTS' OFFICE.
- THE CONTRACTOR SHALL NOTIFY THE DISTRICT AND ALL AFFECTED UTILITY COMPANIES ADJACENT TO THE PROPOSED UTILITY CONSTRUCTION A MINIMUM OF 48 HOURS AND A MAXIMUM OF 96 HOURS PRIOR TO THE START OF CONSTRUCTION. A WEEKLY CONSTRUCTION MEETING SHALL BE REQUIRED WITH THE CONTRACTOR, DISTRICT ENGINEER AND ALL OTHER PARTIES AS DEEMED NECESSARY BY THE DISTRICT.
- COMMENCEMENT OF CONSTRUCTION OF WATER/SEWER SYSTEMS WITHIN METROPOLITAN DISTRICT:
 - PRIOR TO THE START OF CONSTRUCTION, A PRE-CONSTRUCTION MEETING IS REQUIRED A MINIMUM OF 48 HOURS IN ADVANCE OF COMMENCEMENT OF WORK. A REPRESENTATIVE OF THE OWNER OR DEVELOPER, A REPRESENTATIVE OF THE CONTRACTOR AND DESIGN ENGINEER ARE REQUIRED TO ATTEND. CONTACT THE DISTRICT TO SCHEDULE THE PRE-CONSTRUCTION MEETING. NO PRE-CONSTRUCTION MEETING CAN BE SCHEDULED PRIOR TO FOUR (4) SIGNED/APPROVED PLAN SETS ARE RECEIVED BY THE DISTRICT.
 - THE CONTRACTOR IS REQUIRED TO NOTIFY THE DISTRICT A MINIMUM OF 48 HOURS AND A MAXIMUM OF 2 WEEKS PRIOR TO THE START OF CONSTRUCTION. THE CONTRACTOR SHALL ALSO NOTIFY AFFECTED UTILITY COMPANIES AT LEAST 48 HOURS PRIOR TO THE START OF CONSTRUCTION ADJACENT TO THE KNOWN UTILITY LINES.
- TESTING OF FACILITIES:
 - THE CONTRACTOR SHALL NOTIFY THE DISTRICT A MINIMUM OF 48 HOURS AND A MAXIMUM OF 96 HOURS PRIOR TO THE START OF ANY TESTING.
 - ALL SECTIONS OF WATER LINE ARE TO MEET THE FOLLOWING PRESSURE TESTING REQUIREMENTS
 - TEST 100 % OF ALL LINES
 - MUST PASS PRESSURE TEST TO 200 PSI FOR TWO HOURS (UNLESS OTHERWISE APPROVED ON THE PLANS).
 - ALL SANITARY SEWER FACILITIES ARE TO MEET THE FOLLOWING TESTING REQUIREMENTS
 - ALL LINES SHALL BE JET CLEANED PRIOR TO VACUUM OR PRESSURE TESTING
 - ALL MANHOLES SHALL BE VACUUM TESTED WITH DISTRICT STAFF PRESENT PRIOR TO CCTV INSPECTION.
 - SEWER MAINS TO BE PRESSURE TEST PRIOR TO CCTV INSPECTION
 - ALL LINES SHALL BE CCTV INSPECTED AND VIDEO SHALL TO BE SUBMITTED TO THE DISTRICT FOR REVIEW AND APPROVAL.
- PRELIMINARY ACCEPTANCE SHALL BE DEFINED AS THE POINT IN TIME THAT THE DISTRICT ACCEPTS THE FACILITY FOR USE. ALL SURFACE IMPROVEMENTS AND RESTORATION SHALL BE COMPLETED WITHIN 30 DAYS OF COMMENCEMENT. SHOULD THE CONTRACTOR FAIL TO COMPLETE ALL SURFACE IMPROVEMENTS AND RESTORATION WITHIN 30 DAYS OF COMMENCEMENT OF SERVICE, THE DISTRICT, AT THEIR DISCRETION, MAY ELECT TO COMPLETE THE IMPROVEMENTS AT THE CONTRACTORS COST.
- FINAL ACCEPTANCE BY THE DISTRICT OF ANY LINE OR SYSTEM SHALL NOT OCCUR UNTIL COMPLETION OF FINAL ASPHALT LAYERS AND/OR FINAL COMPLETION AND/OR RESTORATION OF ALL SURFACE IMPROVEMENTS. THE WARRANTY PERIOD FOR ALL FACILITIES PRIOR TO FINAL ACCEPTANCE SHALL BE 24 MONTHS COMMENCING AFTER PRELIMINARY ACCEPTANCE.
- ACCEPTANCE:
 - THE DISTRICT MAY GIVE PRELIMINARY ACCEPTANCE ONCE ALL OF THE TESTS ON ALL THE LINES HAVE BEEN COMPLETED AND A WALK-THRU HAS OCCURRED.
 - A SECOND ACCEPTANCE MAY OCCUR ONCE FIRST LIFT OF ASPHALT GOES DOWN AND A SECOND WALK-THRU OF THE SYSTEM OCCURS. IF ALL FACILITIES ARE CLEAN AND ACCESSIBLE, A FINAL ACCEPTANCE MAY OCCUR (THE DISTRICT MAY REQUIRE CLEANING AND RE-VIDEO OF THE SYSTEM, DEPENDING ON THE SEVERITY OF THE CONTAMINATION).
- ALL WATER AND SEWER MAINS, INCLUDING SERVICE LINES, SHALL HAVE "AS-BUILT" DRAWINGS PREPARED AND APPROVED PRIOR TO PRELIMINARY ACCEPTANCE BY THE DISTRICT.
- ALL COMMERCIAL/BUSINESS DEVELOPMENTS SHALL HAVE AN EIGHT INCH (MIN.) WATER MAIN LOOPED THROUGH THE PROPOSED PROPERTY WITH GATE VALVES LOCATED WHERE THE MAIN ENTERS THE PROPERTY LINE. AN EIGHT INCH SEWER MAIN SHALL BE INSTALLED FOR SERVICE TO COMMERCIAL/BUSINESS DEVELOPMENTS, AND A MANHOLE SHALL BE LOCATED WHERE THE MAIN ENTERS THE PROPERTY. THE END OF THE MAINS SHALL BE MARKED WITH THE APPROPRIATE COLORED CARSONITE MARKER ALONG WITH TRACER WIRE.
- AFTER REVIEW AND APPROVAL OF PLANS FOR THE EXTENSION OF LINES, FACILITIES AND/OR SERVICES, CONSTRUCTION MUST BE COMMENCED WITHIN 18 MONTHS FOR RESIDENTIAL SUBDIVISIONS AND 12 MONTHS FOR ANY COMMERCIAL INSTALLATIONS.
- INSPECTION FEES: CALL THE DISTRICT (719-495-2500) FOR FEE SCHEDULE.

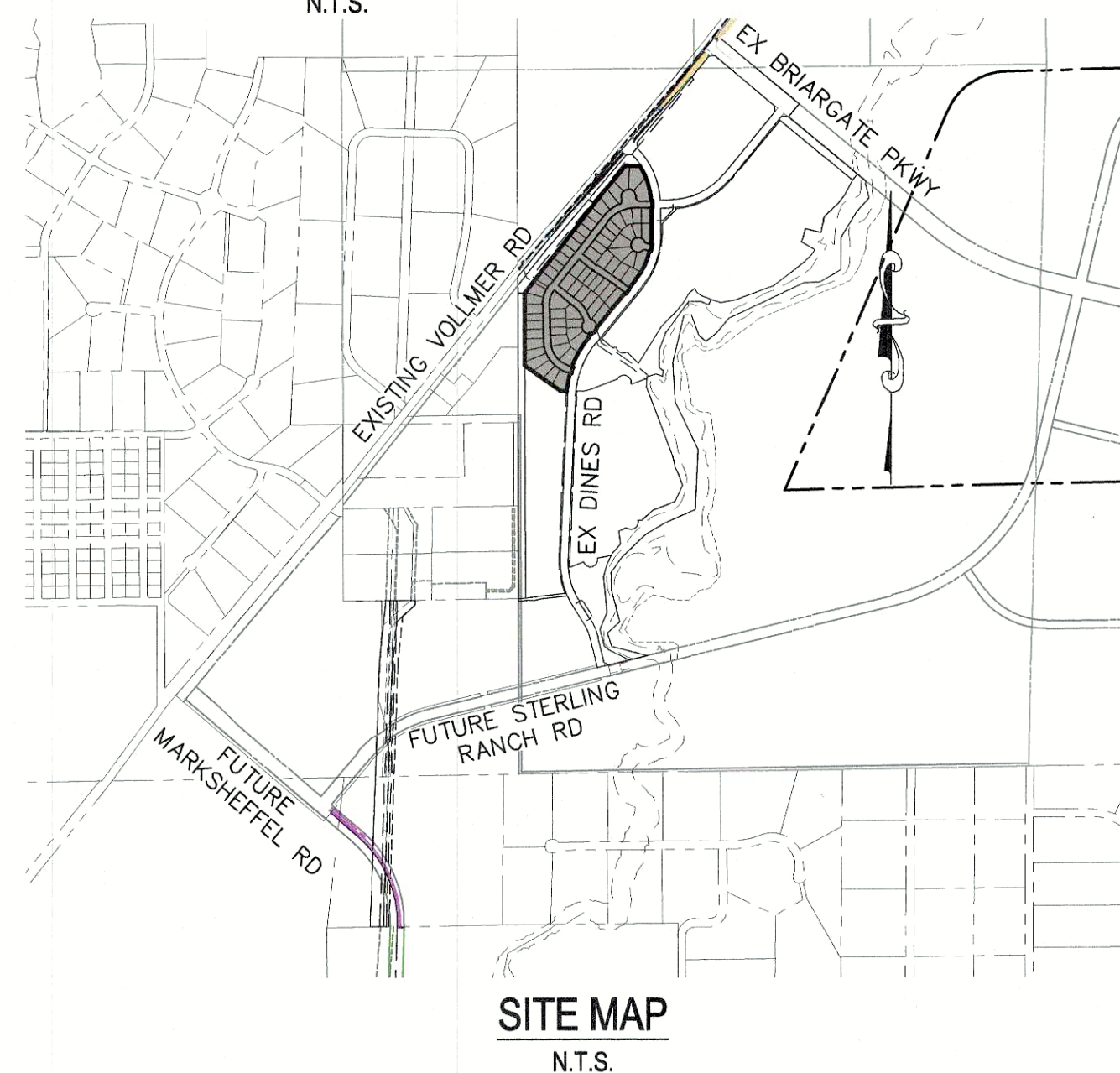
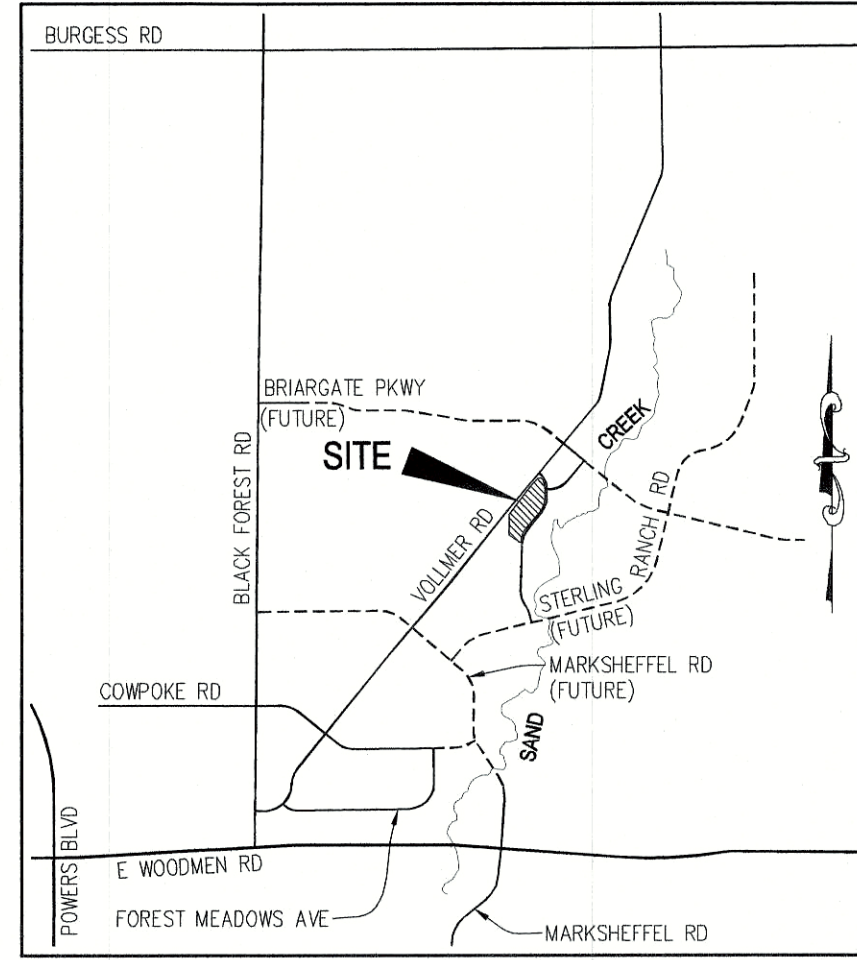
HOMESTEAD AT STERLING RANCH FILING NO. 1

COUNTY OF EL PASO, STATE OF COLORADO

SANITARY SEWER PLAN

(INCLUDING UTILITY SERVICE PLAN)

OCTOBER 2018



BENCHMARKS

- THE TOP OF AN ALUMINUM SURVEYORS CAP, STAMPED "9853", AT THE SOUTHEAST BOUNDARY CORNER OF BARBARICK SUBDIVISION
 NORTHING = 411416.273
 EASTING = 235167.071
 ELEVATION = 7023.42
- THE TOP OF A RED PLASTIC SURVEYORS CAP, ILLEGIBLE, AT THE NORTHWEST BOUNDARY CORNER OF PANNEE RANCHEROS SUBDIVISION
 NORTHING = 410095.404
 EASTING = 235052.131
 ELEVATION = 7000.40
- THE TOP OF A RED PLASTIC SURVEYORS CAP, STAMPED "38141", AT THE SOUTHWEST BOUNDARY CORNER OF BARBARICK SUBDIVISION
 NORTHING = 411399.962
 EASTING = 233849.817
 ELEVATION = 7030.82

WATER & SEWER MAIN EXTENTIONS

ANY CHANGES OR ALTERATIONS AFFECTING THE GRADE, ALIGNMENT, ELEVATION AND/OR DEPTH OF COVER OF ANY WATER OR SEWER MAINS OR OTHER APPURTENANCE SHOWN ON THIS DRAWING SHALL BE THE RESPONSIBILITY OF THE OWNER/DEVELOPER. THE OWNER/DEVELOPER SHALL BE RESPONSIBLE FOR ALL OPERATIONAL DAMAGES AND DEFECTS IN INSTALLATION AND MATERIAL FOR MAINS AND SERVICES FROM THE DATE OF APPROVAL UNTIL FINAL ACCEPTANCE IS ISSUED.

SIGNED: James F. Morley DATE: 10/24/18
 OWNER/DEVELOPER
 PRINT NAME: JAMES F. MORLEY
 ADDRESS: 20 BOULDER CRESCENT, SUITE 200
 COLORADO SPRINGS, CO 80903

DISTRICT APPROVALS

THE STERLING RANCH METROPOLITAN DISTRICT RECOGNIZES THE DESIGN ENGINEER AS HAVING RESPONSIBILITY FOR THE DESIGN AND HAS LIMITED ITS SCOPE OF REVIEW ACCORDINGLY.

STERLING RANCH METROPOLITAN DISTRICT WASTEWATER DESIGN APPROVAL

DATE: 11/15/18 BY: [Signature]

IN CASE OF ERRORS OR OMISSIONS WITH THE WATER DESIGN AS SHOWN ON THIS DOCUMENT THE STANDARDS AS DEFINED IN THE "RULES AND REGULATIONS FOR INSTALLATION OF WASTEWATER MAINS AND SERVICES" SHALL RULE.

APPROVAL EXPIRES 180 DAYS FROM DESIGN APPROVAL.

SHEET INDEX

- | | |
|---------|--|
| SHEET 1 | TITLE SHEET |
| SHEET 2 | PLAN & PROFILE - WHEATLAND DRIVE STA 0+00.00 TO 13+50.00 |
| SHEET 3 | PLAN & PROFILE - WHEATLAND DRIVE STA 13+50.00 TO 16+23.63
- WHEATLAND DRIVE CUL-DE-SAC
- CUTBANK WAY
- RYEGATE WAY
- SCOBY COURT |
| SHEET 4 | PLAN & PROFILE |
| SHEET 5 | UTILITY SERVICE PLAN |

LEGEND

- | | |
|-------|-------------------------|
| ROW | RIGHT OF WAY |
| FL-FL | FLOWLINE TO FLOWLINE |
| BOP | BOTTOM OF PIPE |
| TOP | TOP OF PIPE |
| SS | SANITARY SEWER |
| STM | STORM SEWER |
| WL | WATER |
| STA | STATION |
| 9 | LOT NUMBER |
| BT | BEGIN TRANSITION |
| ET | END TRANSITION |
| PCR | POINT OF CURB RETURN |
| PRC | POINT OF REVERSE CURVE |
| PCC | POINT OF COMPOUND CURVE |
| PC | POINT OF CURVE |
| PT | POINT OF TANGENT |
| * | SPECIAL BEDDING NOTES |



AGENCIES

- OWNER/DEVELOPER: SR LAND, LLC
 20 BOULDER CRESCENT, SUITE 201
 COLORADO SPRINGS, CO 80903
 JIM MORLEY (719) 471-1742
- CIVIL ENGINEER: M & S CIVIL CONSULTANTS, INC.
 20 BOULDER CRESCENT, SUITE 110
 COLORADO SPRINGS, CO 80903
 VIRGIL A. SANCHEZ P.E. (719) 955-5485
- COUNTY ENGINEERING: EL PASO COUNTY PLANNING AND COMMUNITY DEVELOPMENT
 2880 INTERNATIONAL CIRCLE, SUITE 110
 COLORADO SPRINGS, CO 80910
 JEFF RICE, P.E. (719) 520-6300
- TRAFFIC ENGINEERING: EL PASO COUNTY DEPARTMENT OF PUBLIC WORKS
 3275 AKERS DRIVE
 COLORADO SPRINGS, CO 80922
 JENNIFER IRVINE, P.E. (719) 520-6460
- WATER RESOURCES: STERLING RANCH METRO DISTRICT ENGINEERS
 JDS-HYDRO CONSULTANTS
 545 E. PIKES PEAK AVE., SUITE 300
 COLORADO SPRINGS, CO 80903
 JOHN MCGINN (719) 668-8769
- FIRE DISTRICT: BLACK FOREST FIRE PROTECTION DISTRICT
 11445 TEACHOUT ROAD
 COLORADO SPRINGS, CO 80908
 CHIEF BRYAN JACK (719) 495-4300
- GAS DEPARTMENT: COLORADO SPRINGS UTILITIES
 7710 DURANT DR.
 COLORADO SPRINGS, CO 80947
 TIM WENDT (719) 668-3556
- ELECTRIC DEPARTMENT: MOUNTAIN VIEW ELECTRIC
 11140 E. WOODMEN ROAD
 FALCON, CO 80831
 (719) 495-2283
- COMMUNICATIONS: QWEST COMMUNICATIONS
 (U.N.C.C. LOCATORS) (800) 922-1987
 AT&T (LOCATORS) (719) 635-3674

HOMESTEAD AT STERLING RANCH FILING NO. 1
 SANITARY SEWER PLANS
 PROJECT NO. 09-005
 SCALE: HORIZONTAL: N/A
 VERTICAL: N/A
 DATE: 11/10/2017
 SHEET 1 OF 5
 SS01

20 BOULDER CRESCENT, SUITE 110
 COLORADO SPRINGS, CO 80903
 PHONE: 719.955.5485

M & S CIVIL CONSULTANTS, INC.

FOR AND ON BEHALF OF VIRGIL A. SANCHEZ, P.E. NO. 37160

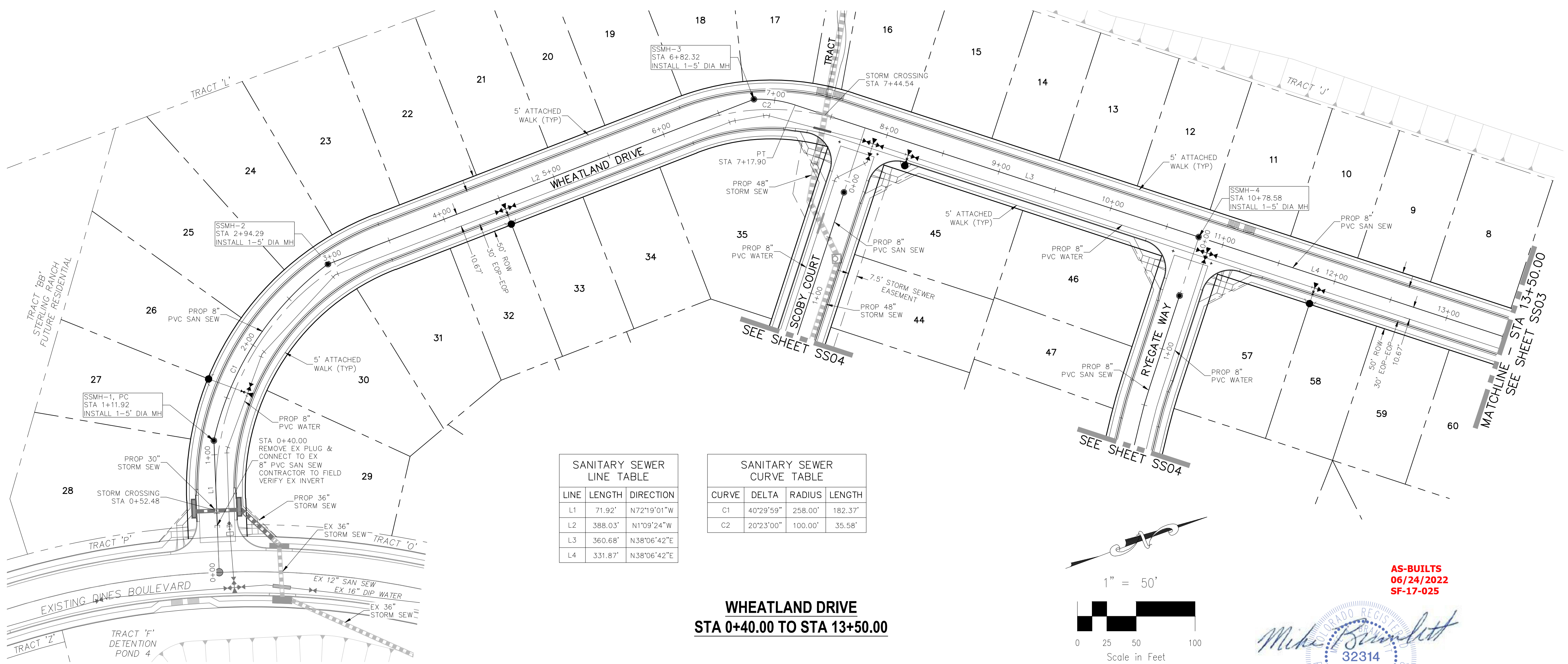
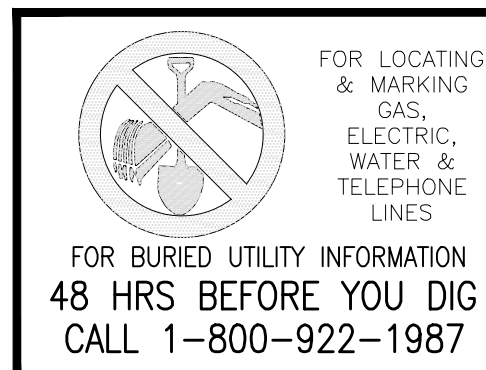
FOR AND ON BEHALF OF M & S CIVIL CONSULTANTS, INC.

NO.	DATE	DESCRIPTION

REVISIONS:

THE ENGINEER PREPARING THESE PLANS WILL NOT BE RESPONSIBLE FOR UNAUTHORIZED CHANGES TO OR ALTERATIONS TO THESE PLANS. ALL CHANGES TO THESE PLANS MUST BE IN WRITING AND MUST BE APPROVED BY THE PREPARER OF THESE PLANS.

CAUTION



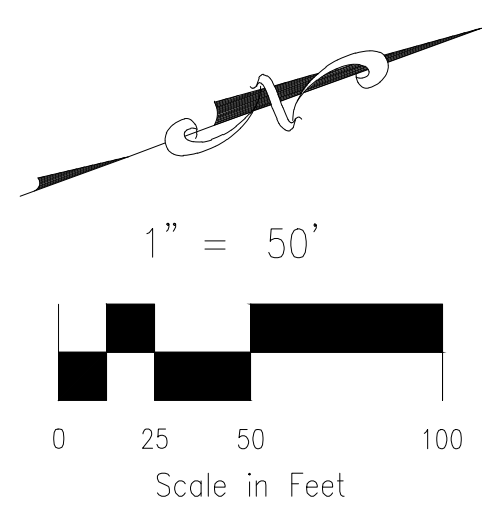
SANITARY SEWER LINE TABLE

LINE	LENGTH	DIRECTION
L1	71.92'	N72°19'01"W
L2	388.03'	N1°09'24"W
L3	360.68'	N38°06'42"E
L4	331.87'	N38°06'42"E

SANITARY SEWER CURVE TABLE

CURVE	DELTA	RADIUS	LENGTH
C1	40°29'59"	258.00'	182.37'
C2	20°23'00"	100.00'	35.58'

**WHEATLAND DRIVE
STA 0+40.00 TO STA 13+50.00**



**AS-BUILTS
06/24/2022
SF-17-025**

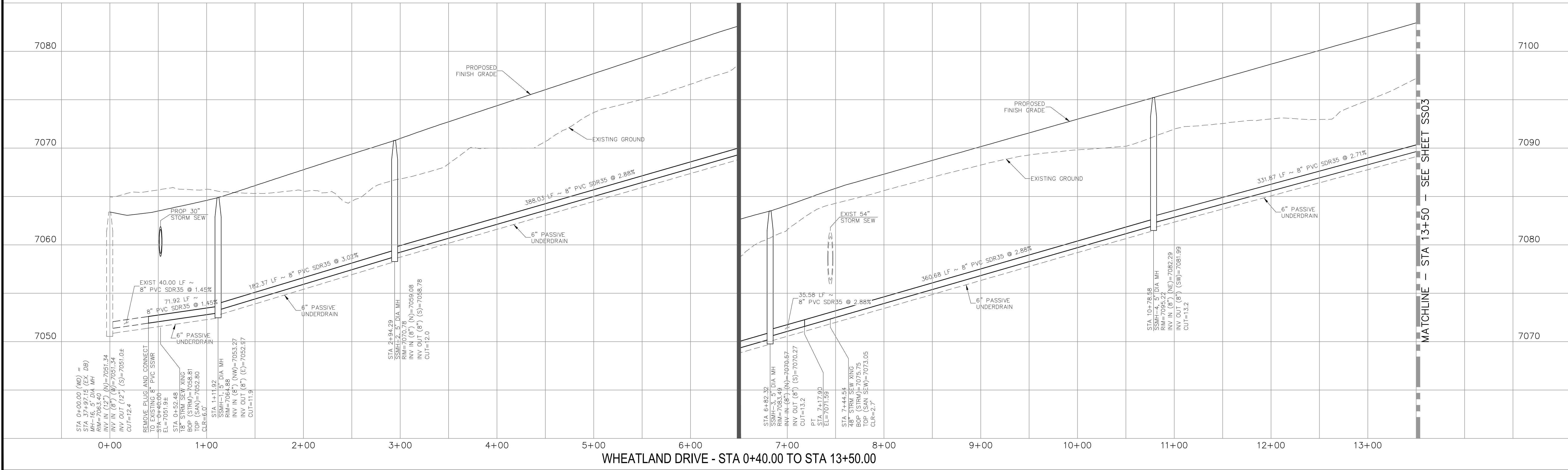


ABBREVIATION LEGEND

- CL-CL CENTERLINE INTERSECTION
- FL-FL FLOWLINE INTERSECTION
- BT BT BEGIN TRANSITION
- ET ET END TRANSITION
- PC PC POINT OF CURVE
- PCC PCC POINT OF COMPOUND CURVE
- PCR PCR POINT OF CURB RETURN
- PRC PRC POINT OF REVERSE CURVE
- PT PT POINT OF TANGENT
- EL EL ELEVATION
- LT LT LEFT
- RT RT RIGHT

STREET ABBREVIATIONS

- CBW CUT BANK WAY
- RW RW RYE GATE WAY
- SC SC SCOOPY COURT
- WD WD WHEATLAND DRIVE
- DB DB DINES BOULEVARD (EX.)
- CDS CUL-DE-SAC
- KN KN KNUCKLE



WHEATLAND DRIVE - STA 0+40.00 TO STA 13+50.00

HOMESTEAD AT STERLING RANCH FILING NO. 1

SANITARY SEWER PLANS

PROJECT NO. 09-005 DATE: 11/10/2017

DESIGNED BY: DLM SCALE: HORIZONTAL: 1"=50' VERTICAL: 1"=5'

DRAWN BY: ELY SHEET 2 OF 5

CHECKED BY: GW SS02

20 BOULDER CRESCENT, SUITE 110
COLORADO SPRINGS, CO 80903
PHONE: 719.555.4485

CIVIL CONSULTANTS, INC.

FOR AND ON BEHALF OF M&S CIVIL CONSULTANTS, INC.

MICHELLE A. SANCHEZ, COLORADO P.E. NO. 37160

REVISIONS:

NO.	DATE	BY	DESCRIPTION

THE ENGINEER PREPARING THESE PLANS WILL NOT BE RESPONSIBLE OR LIABLE FOR UNAUTHORIZED CHANGES TO OR USES OF THESE PLANS. ALL CHANGES TO THE PLANS MUST BE IN WRITING AND MUST BE APPROVED BY THE PREPARER OF THESE PLANS.

CAUTION

File: 0:\09005A\Sterling Ranch No. 2\Map\Const Draw\Sewer Plans\SS02.dwg PlotStamp: 11/17/2017 2:05 PM



STREET ABBREVIATIONS

CBW CUT BANK WAY
 RW RYEGATE WAY
 SC SCOBY COURT
 WD WHEATLAND DRIVE
 DB DINES BOULEVARD (EX.)
 WCDS WHEATLAND DRIVE CUL-DE-SAC
 KN KNUCKLE

ABBREVIATION LEGEND

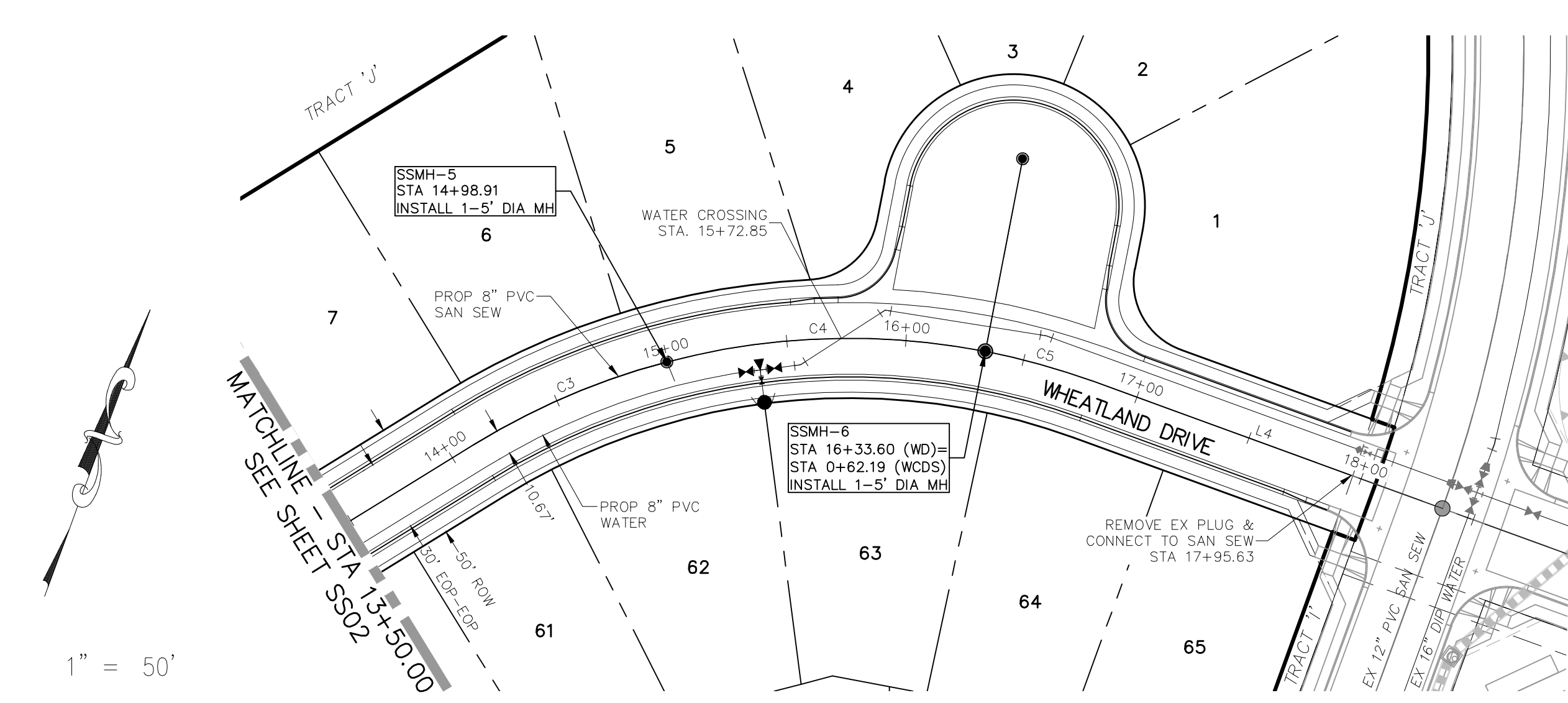
C-C CENTERLINE INTERSECTION
 F-I FLOWLINE INTERSECTION
 BT BEGIN TRANSITION
 ET END TRANSITION
 PC POINT OF CURVE
 PCC POINT OF COMPOUND CURVE
 PCR POINT OF CURB RETURN
 PRC POINT OF REVERSE CURVE
 PT POINT OF TANGENT
 EL ELEVATION
 LT LEFT
 RT RIGHT

SANITARY SEWER LINE TABLE

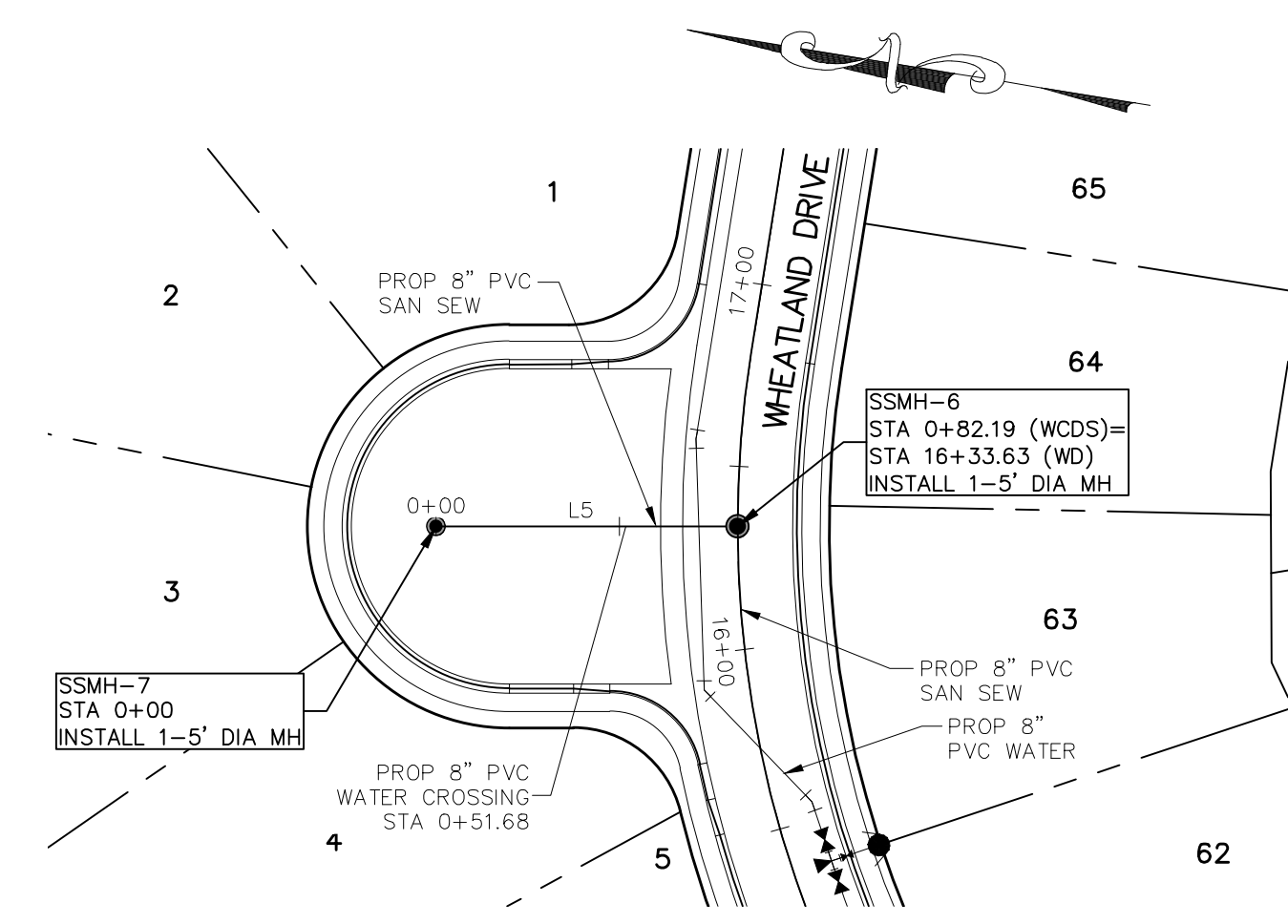
LINE	LENGTH	DIRECTION
L4	114.84'	N89°44'40"E
L5	82.19'	S9°16'09"E
L6	113.10'	S79°51'30"E

SANITARY SEWER CURVE TABLE

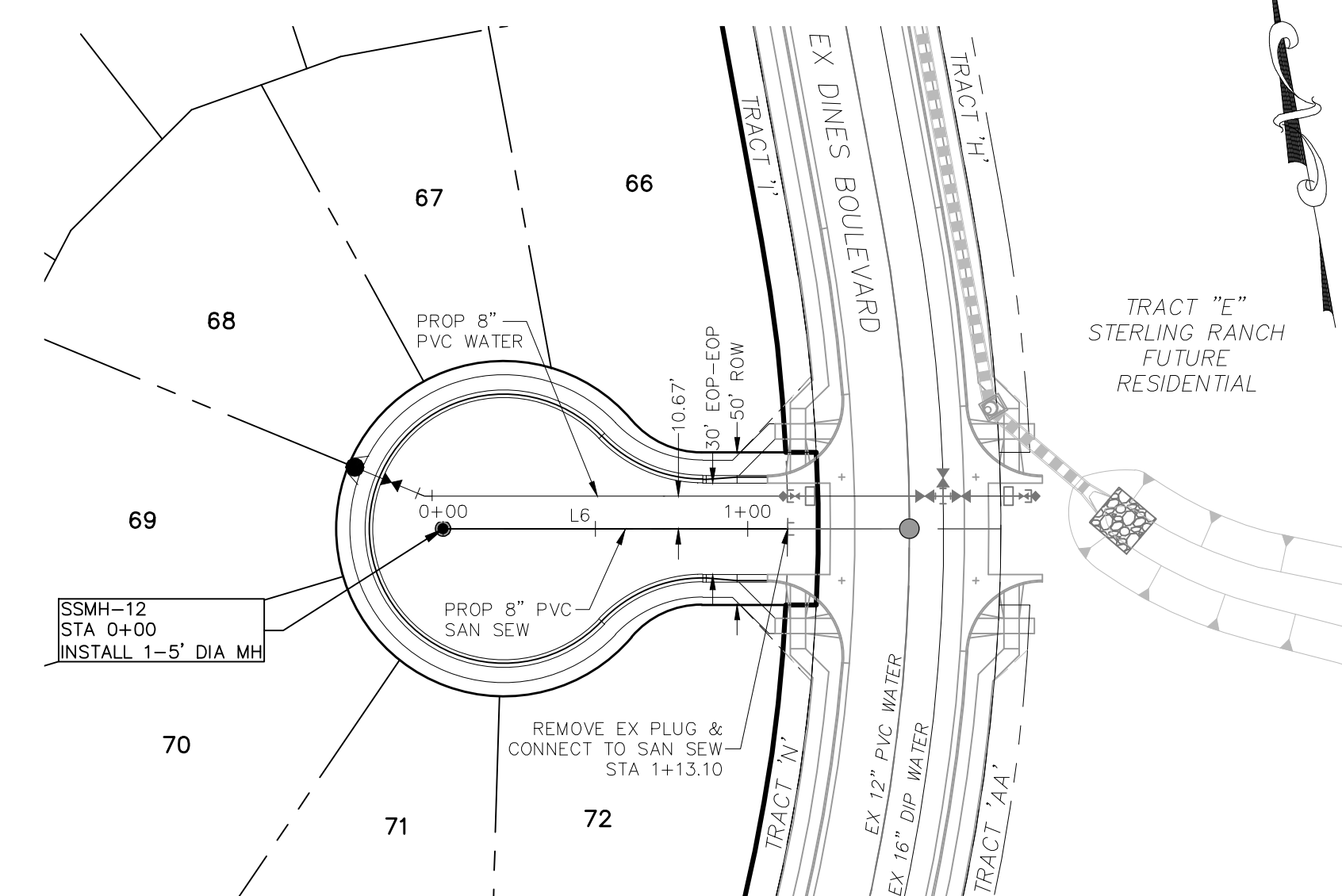
CURVE	DELTA	RADIUS	LENGTH
C3	16°53'46"	300.00'	88.47'
C4	25°43'23"	300.00'	134.69'
C5	9°00'49"	300.00'	47.20'



**WHEATLAND DRIVE
 STA 13+50.00 TO STA 17+95.63**

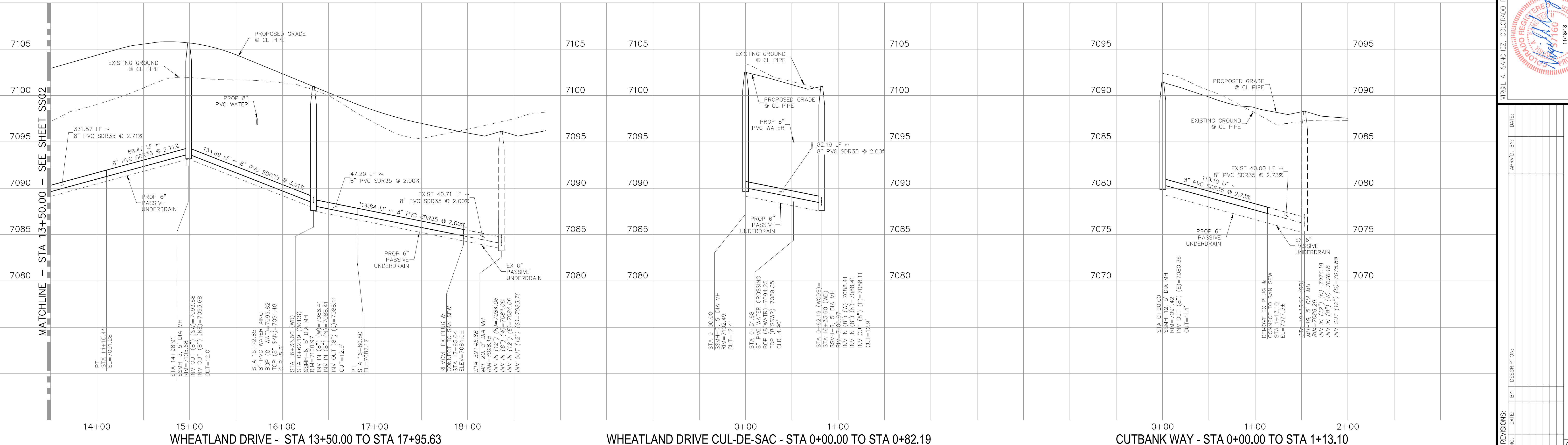


**WHEATLAND DRIVE CUL-DE-SAC
 STA 0+00.00 TO STA 0+82.19**



**CUTBANK WAY
 STA 0+00.00 TO STA 1+13.10**

**AS-BUILTS
 06/24/2022
 SF-17-025**



WHEATLAND DRIVE - STA 13+50.00 TO STA 17+95.63

WHEATLAND DRIVE CUL-DE-SAC - STA 0+00.00 TO STA 0+82.19

CUTBANK WAY - STA 0+00.00 TO STA 1+13.10

HOMESTEAD AT STERLING RANCH FILING NO. 1
SANITARY SEWER PLANS
 PROJECT NO. 09-005
 DATE: 11/10/2017
 SCALE: HORIZONTAL: 1"=50'
 VERTICAL: 1"=5'
 DESIGNED BY: DLM
 DRAWN BY: ELY
 CHECKED BY: GW
 SHEET 3 OF 5
SS03

20 BOULDER CRESCENT, SUITE 110
 COLORADO SPRINGS, CO 80903
 PHONE: 719.555.4485

CIVIL CONSULTANTS, INC.

FOR AND ON BEHALF OF
 M&S CIVIL CONSULTANTS, INC.

 VIRGIL A. SANCHEZ, COLORADO P.E. NO. 37160

REVISIONS:

NO.	DATE:	BY:	DESCRIPTION:

APPROVED BY: _____ DATE: _____

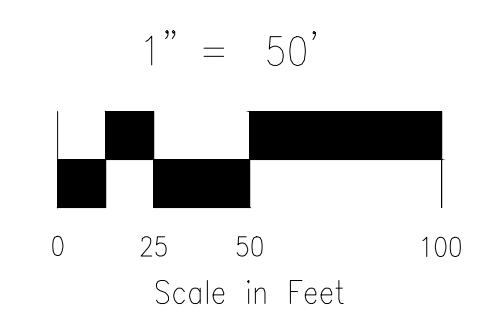
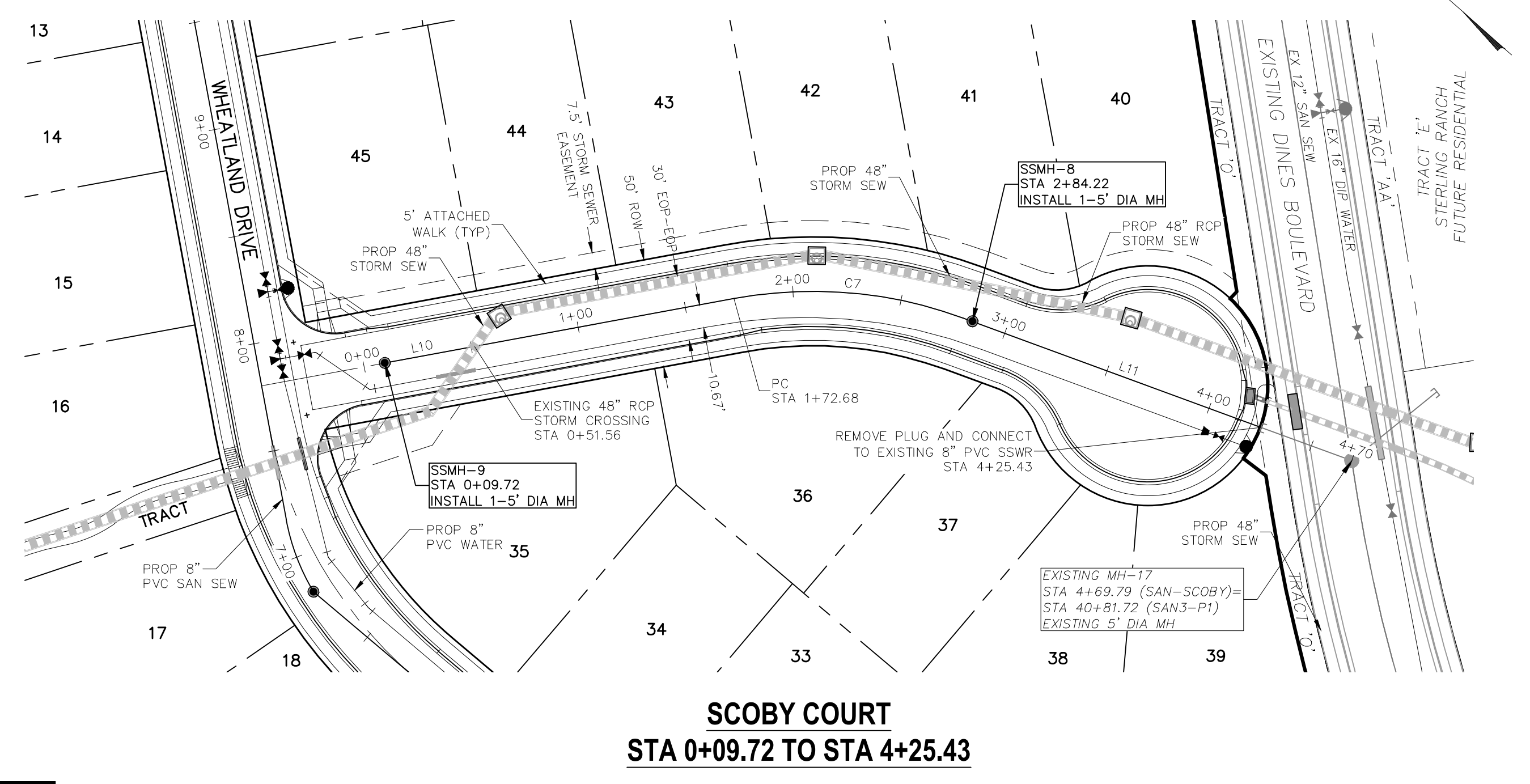
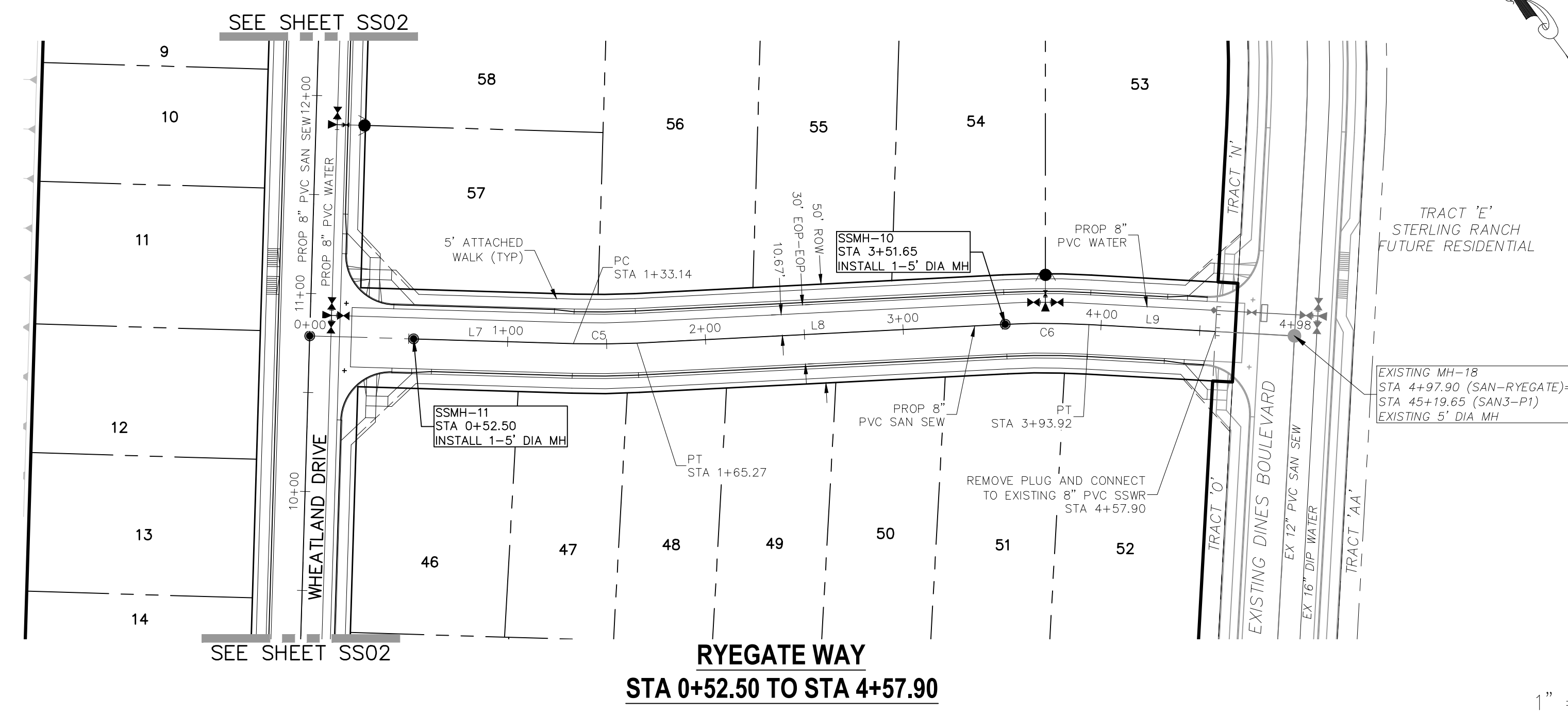
THE ENGINEER PREPARING THESE PLANS WILL NOT BE RESPONSIBLE OR LIABLE FOR UNAUTHORIZED CHANGES TO OR USES OF THESE PLANS. ALL CHANGES TO THE PLANS MUST BE IN WRITING AND MUST BE APPROVED BY THE PREPARER OF THESE PLANS.

CAUTION

File: 0:\09005A\Sterling Ranch No. 2\Map\Const Draw\Sewer Plans\SS03.dwg PlotStamp: 11/16/2017 5:48 PM

20 BOULDER CRESCENT, SUITE 110
 COLORADO SPRINGS, CO 80903
 PHONE: 719.555.4485

CIVIL CONSULTANTS, INC.



SANITARY SEWER LINE TABLE

LINE	LENGTH	DIRECTION
L7	80.64'	S51°53'18"E
L8	186.37'	S56°29'31"E
L9	63.98'	S50°26'12"E
L10	162.95'	S51°53'18"E
L11	185.57'	S21°15'56"E

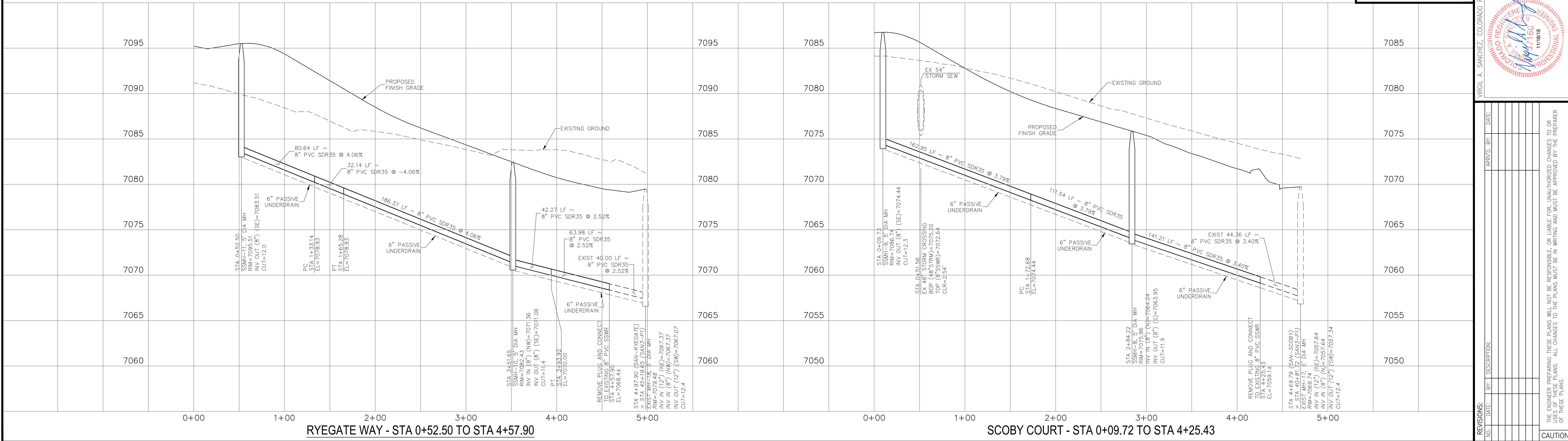
SANITARY SEWER CURVE TABLE

CURVE	DELTA	RADIUS	LENGTH
C5	4°36'13"	400.00'	32.14'
C6	6°03'19"	399.99'	42.27'
C7	31°50'51"	200.67'	111.54'

**AS-BUILTS
 06/24/2022
 SF-17-025**

FOR LOCATING & MARKING GAS, ELECTRIC, WATER & TELEPHONE LINES
**FOR BURIED UTILITY INFORMATION
 48 HRS BEFORE YOU DIG
 CALL 1-800-922-1987**

FOR AND ON BEHALF OF M&S CIVIL CONSULTANTS, INC.



REVISIONS:

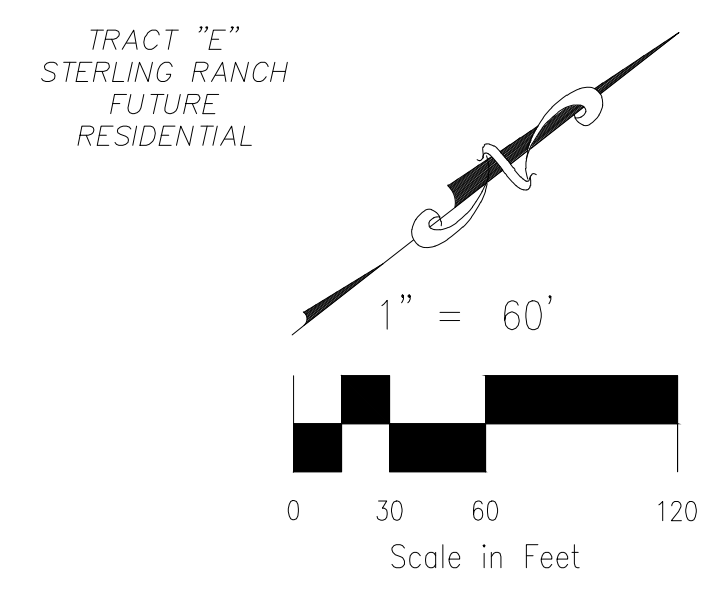
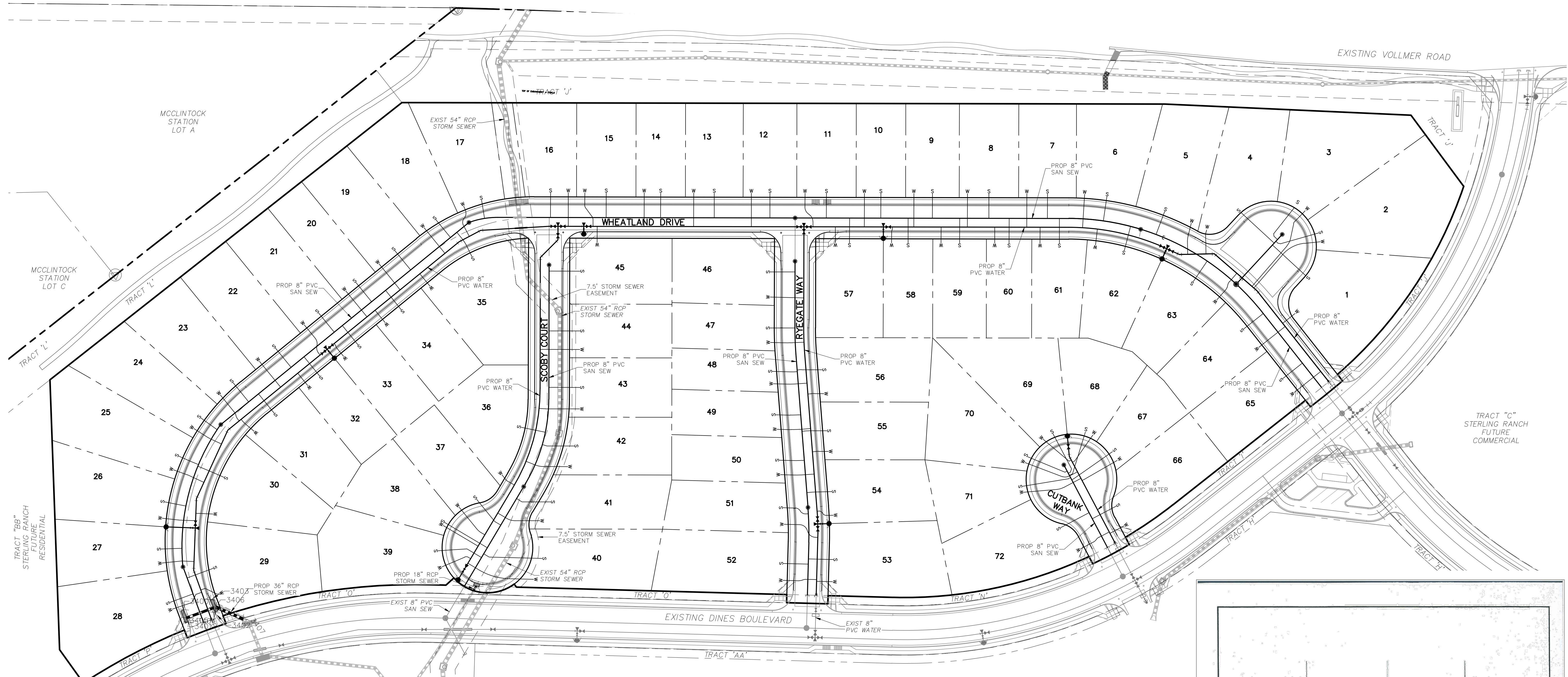
NO.	DATE:	BY:	DESCRIPTION:

APPROVED BY: DATE: _____

THE ENGINEER PREPARING THESE PLANS WILL NOT BE RESPONSIBLE OR LIABLE FOR UNAUTHORIZED CHANGES TO OR USES OF THESE PLANS. ALL CHANGES TO THE PLANS MUST BE IN WRITING AND MUST BE APPROVED BY THE PREPARER OF THESE PLANS.

CAUTION

File: 0:\00005A\Sterling Ranch No 2\Utility Service Plans\UT01.dwg Plotstamp: 11/14/2018 5:00 PM

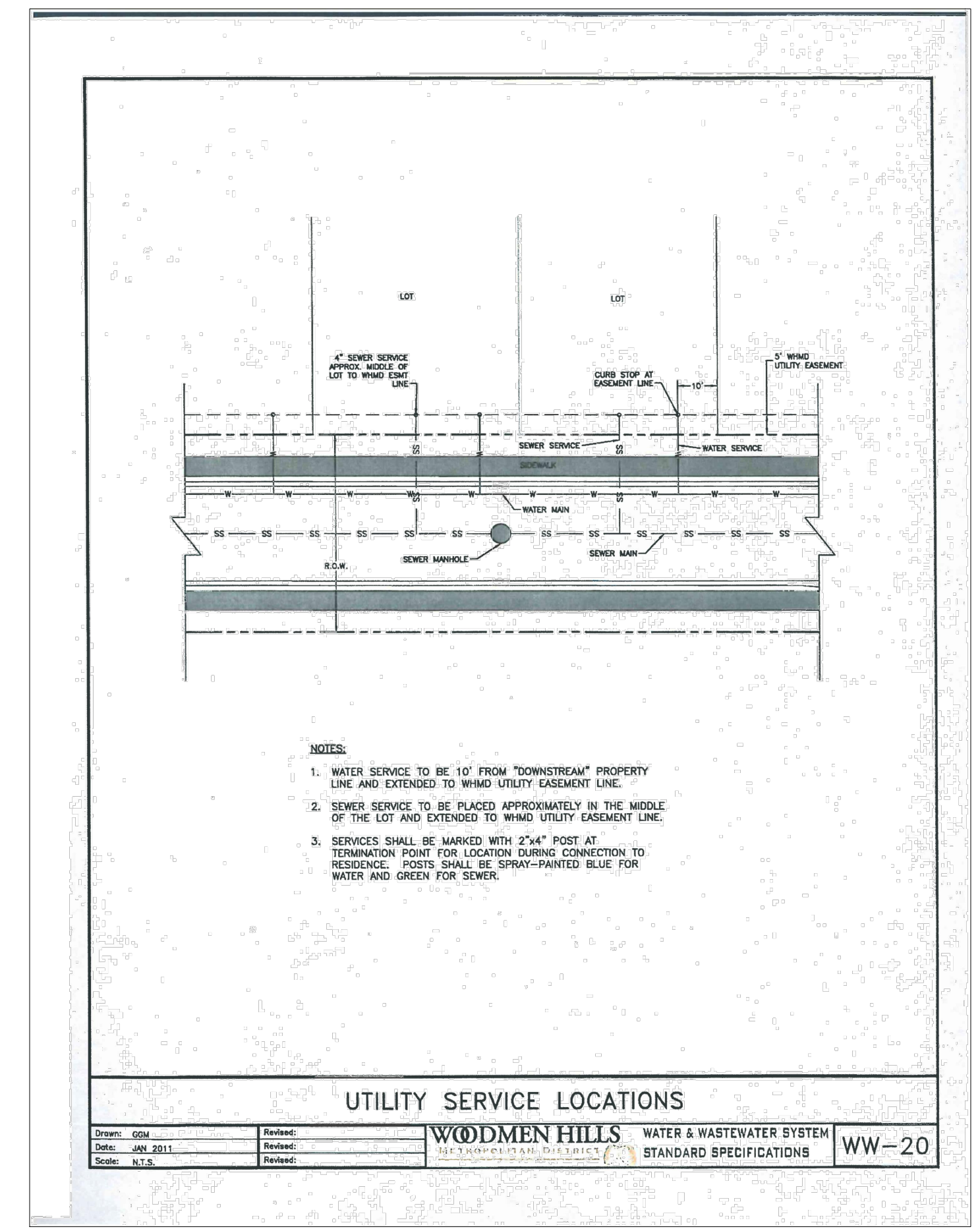


AS-BUILTS
06/24/2022
SF-17-025

Mike Brundlett
32314
PROFESSIONAL ENGINEER

GENERAL NOTES:

1. THE CONTRACTOR IS RESPONSIBLE FOR ANY DAMAGE TO ANY UTILITY FACILITIES AS A RESULT OF HIS ACTIONS. THE CONTRACTOR SHALL MAKE ALL THE REQUIRED REPAIRS IMMEDIATELY TO THE SATISFACTION OF THE STERLING RANCH SANITATION DISTRICT.
2. ALL UTILITY SERVICES WHICH CROSS THE 54" STORM SEWER MAIN (LOTS 16, 40, 41, 42, 43, 44, AND 45) MUST BE SLEEVED.



- NOTES:**
1. WATER SERVICE TO BE 10' FROM "DOWNSTREAM" PROPERTY LINE AND EXTENDED TO WHIM UTILITY EASEMENT LINE.
 2. SEWER SERVICE TO BE PLACED APPROXIMATELY IN THE MIDDLE OF THE LOT AND EXTENDED TO WHIM UTILITY EASEMENT LINE.
 3. SERVICES SHALL BE MARKED WITH 2"x4" POST AT TERMINATION POINT FOR LOCATION DURING CONNECTION TO RESIDENCE. POSTS SHALL BE SPRAY-PAINTED BLUE FOR WATER AND GREEN FOR SEWER.


FOR LOCATING & MARKING GAS, ELECTRIC, WATER & TELEPHONE LINES
FOR BURIED UTILITY INFORMATION
48 HRS BEFORE YOU DIG
CALL 1-800-922-1987

HOMESTEAD AT STERLING RANCH FILING NO. 1

UTILITY SERVICE PLANS

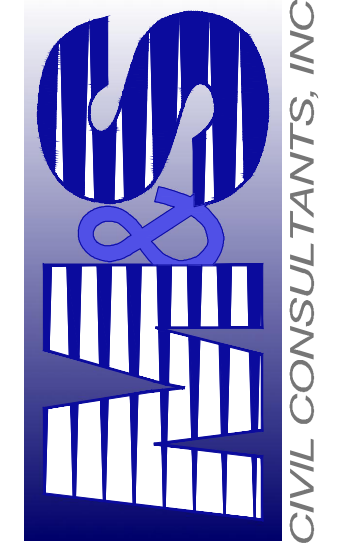
PROJECT NO. 09-005 DATE: 11/10/2017

DESIGNED BY: DLM SCALE: HORIZONTAL: 1"=60' VERTICAL: N/A

DRAWN BY: ELY CHECKED BY: GW

UT01 SHEET 5 OF 5

20 BOULDER CRESCENT, SUITE 110
COLORADO SPRINGS, CO 80903
PHONE: 719.555.4485


CIVIL CONSULTANTS, INC.

FOR AND ON BEHALF OF M&S CIVIL CONSULTANTS, INC.

VIRGIL A. SANCHEZ, COLORADO P.E. NO. 37160

11/18/18

REVISIONS:

NO.	DATE:	BY:	DESCRIPTION:

THE ENGINEER PREPARING THESE PLANS WILL NOT BE RESPONSIBLE OR LIABLE FOR UNAUTHORIZED CHANGES TO OR USES OF THESE PLANS. ALL CHANGES TO THE PLANS MUST BE IN WRITING AND MUST BE APPROVED BY THE PREPARER OF THESE PLANS.

CAUTION