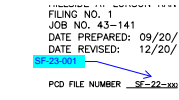


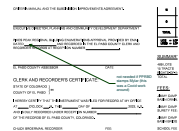
# MDT-SF23001-R1-Plat.pdf Markup Summary

1 (8)



**Subject:** Callout  
**Page Index:** 1  
**Date:** 2/1/2023 3:27:36 PM  
**Author:** CDurham  
**Color:** ■  
**Layer:**  
**Space:**  
**Page Label:** Sheet 1 - Cover

SF-23-001



**Subject:** Callout  
**Page Index:** 1  
**Date:** 2/6/2023 8:19:43 AM  
**Author:** dsdparsons  
**Color:** ■  
**Layer:**  
**Space:**  
**Page Label:** Sheet 1 - Cover

not needed if PPRBD stamps Mylar (this was a Covid work around)



**Subject:** Callout  
**Page Index:** 1  
**Date:** 2/6/2023 8:20:10 AM  
**Author:** dsdparsons  
**Color:** ■  
**Layer:**  
**Space:**  
**Page Label:** Sheet 1 - Cover

please provide recorded Parkland Agreement



**Subject:** Image  
**Page Index:** 1  
**Date:** 2/6/2023 8:41:53 AM  
**Author:** dsdparsons  
**Color:** ■  
**Layer:**  
**Space:**  
**Page Label:** Sheet 1 - Cover



**Subject:** Arrow  
**Page Index:** 1  
**Date:** 2/6/2023 8:42:00 AM  
**Author:** dsdparsons  
**Color:** ■  
**Layer:**  
**Space:**  
**Page Label:** Sheet 1 - Cover



**Subject:**  
**Page Index:** 1  
**Date:** 2/7/2023 11:46:07 AM  
**Author:** dsdrice  
**Color:** ■  
**Layer:**  
**Space:**  
**Page Label:** Sheet 1 - Cover

2

25 88878374 A DISTANCE OF 176.8 FEET TO THE NORTHEAST  
E SOUTHWEST QUARTER OF SECTION 35, T18N, R10E, S1  
R10E20W A DISTANCE OF 392.00 FEET.  
26 887874 A DISTANCE OF 89.00 FEET TO THE SOUTHWEST COR  
NER SOUTH A CORNER BENCH MARK NO. 17 AS RECORDED  
IN A CERTAIN RECORD IN THE PUBLIC OFFICE, COLORADO RECORD  
LONG THE INTERSECTING LINE THEREOF THE FOLLOWING TWO (2)  
25 887874 A DISTANCE OF 176.8 FEET  
26 887874 A DISTANCE OF 392.00 FEET TO THE POINT OF BE  
GINS

**Subject:** Callout  
**Page Index:** 1  
**Date:** 2/7/2023 11:46:30 AM  
**Author:** dsdrice  
**Color:** ■  
**Layer:**  
**Space:**  
**Page Label:** Sheet 1 - Cover

delete extra digit

28 887874  
29 887874  
30 887874  
31 887874  
32 887874  
33 887874  
34 887874  
35 887874  
36 887874  
37 887874  
38 887874  
39 887874  
40 887874  
41 887874  
42 887874  
43 887874  
44 887874  
45 887874  
46 887874  
47 887874  
48 887874  
49 887874  
50 887874  
51 887874  
52 887874  
53 887874  
54 887874  
55 887874  
56 887874  
57 887874  
58 887874  
59 887874  
60 887874  
61 887874  
62 887874  
63 887874  
64 887874  
65 887874  
66 887874  
67 887874  
68 887874  
69 887874  
70 887874  
71 887874  
72 887874  
73 887874  
74 887874  
75 887874  
76 887874  
77 887874  
78 887874  
79 887874  
80 887874  
81 887874  
82 887874  
83 887874  
84 887874  
85 887874  
86 887874  
87 887874  
88 887874  
89 887874  
90 887874  
91 887874  
92 887874  
93 887874  
94 887874  
95 887874  
96 887874  
97 887874  
98 887874  
99 887874  
100 887874

**Subject:** Cloud+  
**Page Index:** 1  
**Date:** 2/7/2023 11:48:16 AM  
**Author:** dsdrice  
**Color:** ■  
**Layer:**  
**Space:**  
**Page Label:** Sheet 1 - Cover

Revise per any drainage report revisions

2 (14)

Include benchmark

**Subject:** Text Box  
**Page Index:** 2  
**Date:** 2/1/2023 3:28:05 PM  
**Author:** CDurham  
**Color:** ■  
**Layer:**  
**Space:**  
**Page Label:** Sheet 2 - Notes

Include benchmark

101 887874  
102 887874  
103 887874  
104 887874  
105 887874  
106 887874  
107 887874  
108 887874  
109 887874  
110 887874  
111 887874  
112 887874  
113 887874  
114 887874  
115 887874  
116 887874  
117 887874  
118 887874  
119 887874  
120 887874  
121 887874  
122 887874  
123 887874  
124 887874  
125 887874  
126 887874  
127 887874  
128 887874  
129 887874  
130 887874  
131 887874  
132 887874  
133 887874  
134 887874  
135 887874  
136 887874  
137 887874  
138 887874  
139 887874  
140 887874  
141 887874  
142 887874  
143 887874  
144 887874  
145 887874  
146 887874  
147 887874  
148 887874  
149 887874  
150 887874  
151 887874  
152 887874  
153 887874  
154 887874  
155 887874  
156 887874  
157 887874  
158 887874  
159 887874  
160 887874  
161 887874  
162 887874  
163 887874  
164 887874  
165 887874  
166 887874  
167 887874  
168 887874  
169 887874  
170 887874  
171 887874  
172 887874  
173 887874  
174 887874  
175 887874  
176 887874  
177 887874  
178 887874  
179 887874  
180 887874  
181 887874  
182 887874  
183 887874  
184 887874  
185 887874  
186 887874  
187 887874  
188 887874  
189 887874  
190 887874  
191 887874  
192 887874  
193 887874  
194 887874  
195 887874  
196 887874  
197 887874  
198 887874  
199 887874  
200 887874

**Subject:** Callout  
**Page Index:** 2  
**Date:** 2/6/2023 8:20:57 AM  
**Author:** dsdparsons  
**Color:** ■  
**Layer:**  
**Space:**  
**Page Label:** Sheet 2 - Notes

complete this note

101 887874  
102 887874  
103 887874  
104 887874  
105 887874  
106 887874  
107 887874  
108 887874  
109 887874  
110 887874  
111 887874  
112 887874  
113 887874  
114 887874  
115 887874  
116 887874  
117 887874  
118 887874  
119 887874  
120 887874  
121 887874  
122 887874  
123 887874  
124 887874  
125 887874  
126 887874  
127 887874  
128 887874  
129 887874  
130 887874  
131 887874  
132 887874  
133 887874  
134 887874  
135 887874  
136 887874  
137 887874  
138 887874  
139 887874  
140 887874  
141 887874  
142 887874  
143 887874  
144 887874  
145 887874  
146 887874  
147 887874  
148 887874  
149 887874  
150 887874  
151 887874  
152 887874  
153 887874  
154 887874  
155 887874  
156 887874  
157 887874  
158 887874  
159 887874  
160 887874  
161 887874  
162 887874  
163 887874  
164 887874  
165 887874  
166 887874  
167 887874  
168 887874  
169 887874  
170 887874  
171 887874  
172 887874  
173 887874  
174 887874  
175 887874  
176 887874  
177 887874  
178 887874  
179 887874  
180 887874  
181 887874  
182 887874  
183 887874  
184 887874  
185 887874  
186 887874  
187 887874  
188 887874  
189 887874  
190 887874  
191 887874  
192 887874  
193 887874  
194 887874  
195 887874  
196 887874  
197 887874  
198 887874  
199 887874  
200 887874

**Subject:** Callout  
**Page Index:** 2  
**Date:** 2/6/2023 8:22:23 AM  
**Author:** dsdparsons  
**Color:** ■  
**Layer:**  
**Space:**  
**Page Label:** Sheet 2 - Notes

repeat not from page 1- not needed if PPRBD stamps mylar

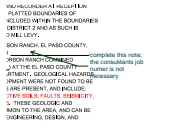
101 887874  
102 887874  
103 887874  
104 887874  
105 887874  
106 887874  
107 887874  
108 887874  
109 887874  
110 887874  
111 887874  
112 887874  
113 887874  
114 887874  
115 887874  
116 887874  
117 887874  
118 887874  
119 887874  
120 887874  
121 887874  
122 887874  
123 887874  
124 887874  
125 887874  
126 887874  
127 887874  
128 887874  
129 887874  
130 887874  
131 887874  
132 887874  
133 887874  
134 887874  
135 887874  
136 887874  
137 887874  
138 887874  
139 887874  
140 887874  
141 887874  
142 887874  
143 887874  
144 887874  
145 887874  
146 887874  
147 887874  
148 887874  
149 887874  
150 887874  
151 887874  
152 887874  
153 887874  
154 887874  
155 887874  
156 887874  
157 887874  
158 887874  
159 887874  
160 887874  
161 887874  
162 887874  
163 887874  
164 887874  
165 887874  
166 887874  
167 887874  
168 887874  
169 887874  
170 887874  
171 887874  
172 887874  
173 887874  
174 887874  
175 887874  
176 887874  
177 887874  
178 887874  
179 887874  
180 887874  
181 887874  
182 887874  
183 887874  
184 887874  
185 887874  
186 887874  
187 887874  
188 887874  
189 887874  
190 887874  
191 887874  
192 887874  
193 887874  
194 887874  
195 887874  
196 887874  
197 887874  
198 887874  
199 887874  
200 887874

**Subject:** Callout  
**Page Index:** 2  
**Date:** 2/6/2023 8:23:04 AM  
**Author:** dsdparsons  
**Color:** ■  
**Layer:**  
**Space:**  
**Page Label:** Sheet 2 - Notes

reception number of Prk Agreement needs to be added



**Subject:** Image  
**Page Index:** 2  
**Date:** 2/6/2023 8:23:12 AM  
**Author:** dsdparsons  
**Color:** ■  
**Layer:**  
**Space:**  
**Page Label:** Sheet 2 - Notes

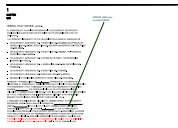


**Subject:** Callout  
**Page Index:** 2  
**Date:** 2/6/2023 9:40:51 AM  
**Author:** dsdparsons  
**Color:** ■  
**Layer:**  
**Space:**  
**Page Label:** Sheet 2 - Notes

complete this note; the consultants job number is not necessary



**Subject:** Image  
**Page Index:** 2  
**Date:** 2/6/2023 9:42:04 AM  
**Author:** dsdparsons  
**Color:** ■  
**Layer:**  
**Space:**  
**Page Label:** Sheet 2 - Notes



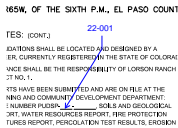
**Subject:** Callout  
**Page Index:** 2  
**Date:** 2/6/2023 9:42:23 AM  
**Author:** dsdparsons  
**Color:** ■  
**Layer:**  
**Space:**  
**Page Label:** Sheet 2 - Notes

UPDATE GEO note to match PUDSP



**Subject:** Callout  
**Page Index:** 2  
**Date:** 2/6/2023 9:42:41 AM  
**Author:** dsdparsons  
**Color:** ■  
**Layer:**  
**Space:**  
**Page Label:** Sheet 2 - Notes

add a disclosure note



**Subject:** Callout  
**Page Index:** 2  
**Date:** 2/7/2023 12:09:07 PM  
**Author:** dsdrice  
**Color:** ■  
**Layer:**  
**Space:**  
**Page Label:** Sheet 2 - Notes

22-001

DISTRICT NO. 1  
DESIGN SHALL BE SUBMITTED AND ONE SET FILED AT THE  
PLANNING AND COMMUNITY DEVELOPMENT DEPARTMENT  
FOR REVIEW AND APPROVAL. ALL SETS MUST BE FILED  
WITH THE PLANNING AND COMMUNITY DEVELOPMENT DEPARTMENT  
IN ORDER TO BE CONSIDERED FOR REVIEW. THE PROJECT  
DESIGN SHALL BE REVIEWED BY THE PLANNING AND COMMUNITY  
DEVELOPMENT DEPARTMENT AND THE PLANNING AND COMMUNITY  
DEVELOPMENT DEPARTMENT SHALL HAVE THE FINAL SAY ON ALL  
DESIGN DECISIONS. THE PLANNING AND COMMUNITY DEVELOPMENT  
DEPARTMENT SHALL BE THE RECORDS OF THE EL PASO COUNTY CLERK  
OF RECORDS. THE RECORDS OF THE EL PASO COUNTY CLERK  
OF RECORDS SHALL BE THE RECORDS OF THE EL PASO COUNTY CLERK  
OF RECORDS.  
5. WITH PERMANENT FOUNDATIONS OR MATERIAL STORAGE  
PERMIT TO BE OBTAINED FROM THE PLANNING AND COMMUNITY  
DEVELOPMENT DEPARTMENT. FENCES SHALL NOT BE PLACED  
WITHIN THE PERMITTED AREA.

**Subject:** Callout  
**Page Index:** 2  
**Date:** 2/7/2023 12:10:37 PM  
**Author:** dsdrice  
**Color:** ■  
**Layer:**  
**Space:**  
**Page Label:** Sheet 2 - Notes

provide

IS NO. 1  
DESIGN SHALL BE SUBMITTED AND ONE SET FILED AT THE  
PLANNING AND COMMUNITY DEVELOPMENT DEPARTMENT  
FOR REVIEW AND APPROVAL. ALL SETS MUST BE FILED  
WITH THE PLANNING AND COMMUNITY DEVELOPMENT DEPARTMENT  
IN ORDER TO BE CONSIDERED FOR REVIEW. THE PROJECT  
DESIGN SHALL BE REVIEWED BY THE PLANNING AND COMMUNITY  
DEVELOPMENT DEPARTMENT AND THE PLANNING AND COMMUNITY  
DEVELOPMENT DEPARTMENT SHALL HAVE THE FINAL SAY ON ALL  
DESIGN DECISIONS. THE PLANNING AND COMMUNITY DEVELOPMENT  
DEPARTMENT SHALL BE THE RECORDS OF THE EL PASO COUNTY CLERK  
OF RECORDS. THE RECORDS OF THE EL PASO COUNTY CLERK  
OF RECORDS SHALL BE THE RECORDS OF THE EL PASO COUNTY CLERK  
OF RECORDS.  
5. WITH PERMANENT FOUNDATIONS OR MATERIAL STORAGE  
PERMIT TO BE OBTAINED FROM THE PLANNING AND COMMUNITY  
DEVELOPMENT DEPARTMENT. FENCES SHALL NOT BE PLACED  
WITHIN THE PERMITTED AREA.

**Subject:** Cloud+  
**Page Index:** 2  
**Date:** 2/7/2023 12:13:59 PM  
**Author:** dsdrice  
**Color:** ■  
**Layer:**  
**Space:**  
**Page Label:** Sheet 2 - Notes

Replace with:  
No driveway shall be established unless an access  
permit has been granted by El Paso County.

Add:  
There shall be no direct lot access to Lorson  
Boulevard.

IS NO. 1  
DESIGN SHALL BE SUBMITTED AND ONE SET FILED AT THE  
PLANNING AND COMMUNITY DEVELOPMENT DEPARTMENT  
FOR REVIEW AND APPROVAL. ALL SETS MUST BE FILED  
WITH THE PLANNING AND COMMUNITY DEVELOPMENT DEPARTMENT  
IN ORDER TO BE CONSIDERED FOR REVIEW. THE PROJECT  
DESIGN SHALL BE REVIEWED BY THE PLANNING AND COMMUNITY  
DEVELOPMENT DEPARTMENT AND THE PLANNING AND COMMUNITY  
DEVELOPMENT DEPARTMENT SHALL HAVE THE FINAL SAY ON ALL  
DESIGN DECISIONS. THE PLANNING AND COMMUNITY DEVELOPMENT  
DEPARTMENT SHALL BE THE RECORDS OF THE EL PASO COUNTY CLERK  
OF RECORDS. THE RECORDS OF THE EL PASO COUNTY CLERK  
OF RECORDS SHALL BE THE RECORDS OF THE EL PASO COUNTY CLERK  
OF RECORDS.  
5. WITH PERMANENT FOUNDATIONS OR MATERIAL STORAGE  
PERMIT TO BE OBTAINED FROM THE PLANNING AND COMMUNITY  
DEVELOPMENT DEPARTMENT. FENCES SHALL NOT BE PLACED  
WITHIN THE PERMITTED AREA.

**Subject:** Callout  
**Page Index:** 2  
**Date:** 2/7/2023 12:15:41 PM  
**Author:** dsdrice  
**Color:** ■  
**Layer:**  
**Space:**  
**Page Label:** Sheet 2 - Notes

222140277

IS NO. 1  
DESIGN SHALL BE SUBMITTED AND ONE SET FILED AT THE  
PLANNING AND COMMUNITY DEVELOPMENT DEPARTMENT  
FOR REVIEW AND APPROVAL. ALL SETS MUST BE FILED  
WITH THE PLANNING AND COMMUNITY DEVELOPMENT DEPARTMENT  
IN ORDER TO BE CONSIDERED FOR REVIEW. THE PROJECT  
DESIGN SHALL BE REVIEWED BY THE PLANNING AND COMMUNITY  
DEVELOPMENT DEPARTMENT AND THE PLANNING AND COMMUNITY  
DEVELOPMENT DEPARTMENT SHALL HAVE THE FINAL SAY ON ALL  
DESIGN DECISIONS. THE PLANNING AND COMMUNITY DEVELOPMENT  
DEPARTMENT SHALL BE THE RECORDS OF THE EL PASO COUNTY CLERK  
OF RECORDS. THE RECORDS OF THE EL PASO COUNTY CLERK  
OF RECORDS SHALL BE THE RECORDS OF THE EL PASO COUNTY CLERK  
OF RECORDS.  
5. WITH PERMANENT FOUNDATIONS OR MATERIAL STORAGE  
PERMIT TO BE OBTAINED FROM THE PLANNING AND COMMUNITY  
DEVELOPMENT DEPARTMENT. FENCES SHALL NOT BE PLACED  
WITHIN THE PERMITTED AREA.

**Subject:** Callout  
**Page Index:** 2  
**Date:** 2/7/2023 12:17:34 PM  
**Author:** dsdrice  
**Color:** ■  
**Layer:**  
**Space:**  
**Page Label:** Sheet 2 - Notes

and amended as recorded at reception no.  
216113013