

"KNECHT SUBDIVISION" CLOSURE SHEETS  
 Sheet 1 of 8  
 09.04.24 LDC, INC.

18058

S 89°16'18" E 1529.22'

915393 Sq. Feet  
 21.0145 Acres

Wed Jul 3 09:22:55 2024

Inverse With Area	PntNo	Bearing	Distance	Northing	Easting	Description
		N 80°01'14"	E 289.40	7409.65	5260.45	
		N 00°01'14"	E 246.76	7459.80	5545.47	
		S 73°00'43"	E 417.32	7706.56	5545.56	
		N 63°41'21"	E 182.91	7584.63	5944.67	
		S 66°21'11"	E 571.16	7665.70	6108.63	
		N 12°02'24"	E 757.41	7436.61	6631.84	
		N 89°16'18"	W 1529.22	8177.36	6789.83	
		S 00°01'14"	W 787.15	8196.80	5260.74	
				7409.65	5260.45	

Closure Error Distance > 0.0000 Error Bearing > S 36°17'11" E  
 Closure Precision > 1 in 104283405.4 Total Distance Inversed > 4781.32

Area: 915393 Sq. Feet, 21.0145 Acres

N 00°01'14" E 787.15'

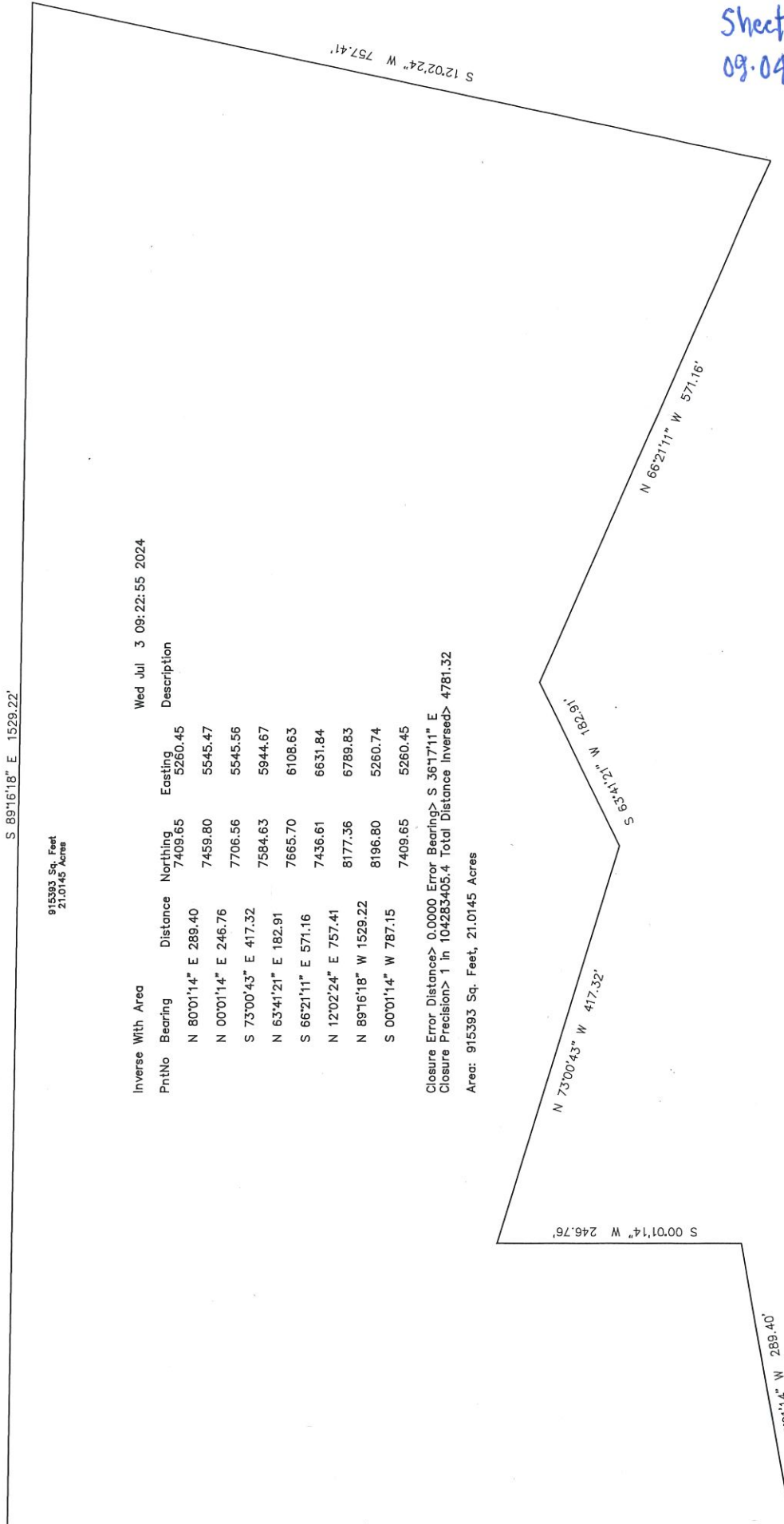
S 00°01'14" W 246.76'

N 73°00'43" W 417.32'

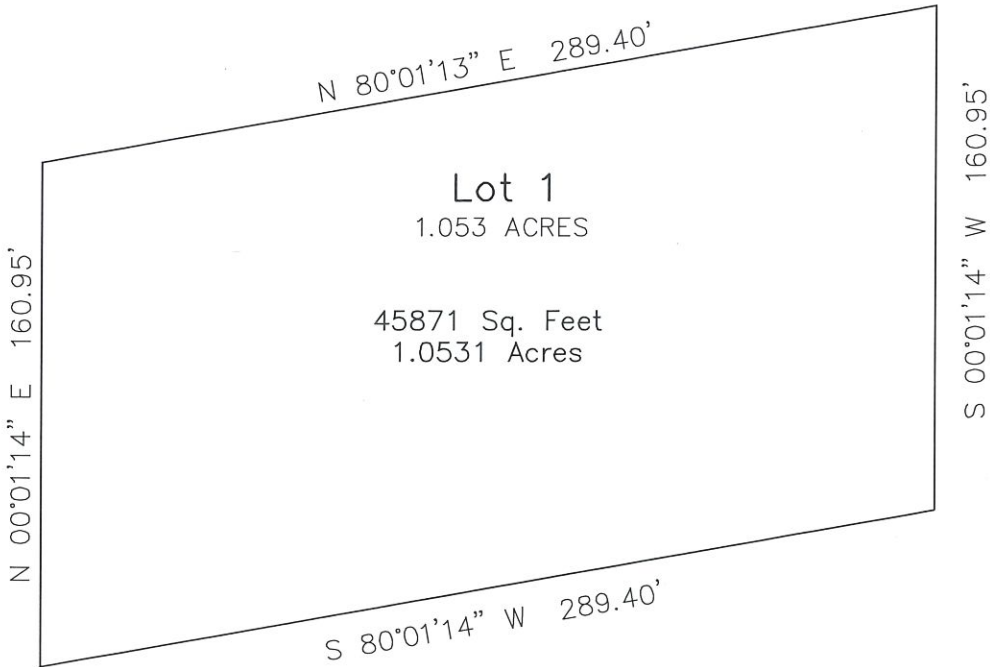
S 63°41'21" W 182.91'

N 66°21'11" W 571.16'

S 12°02'24" W 757.41'



18058



Inverse With Area

Wed Jul 3 09:23:35 2024

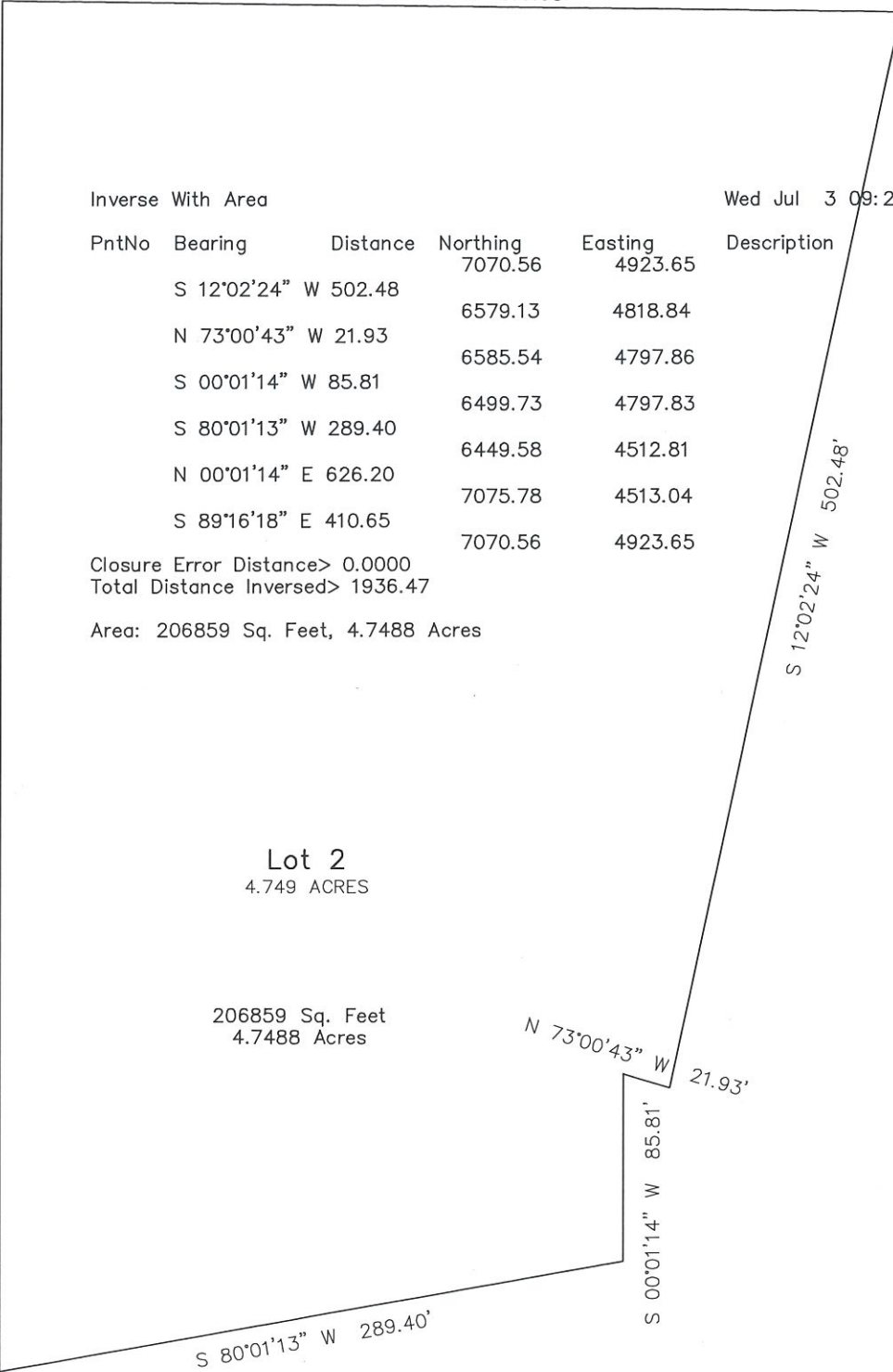
PntNo	Bearing	Distance	Northing	Easting	Description
			6019.77	4797.83	
	S 00°01'14" W	160.95	5858.82	4797.78	
	S 80°01'14" W	289.40	5808.67	4512.75	
	N 00°01'14" E	160.95	5969.62	4512.81	
	N 80°01'13" E	289.40	6019.77	4797.83	

Closure Error Distance > 0.0000  
Total Distance Inversed > 900.70

Area: 45871 Sq. Feet, 1.0531 Acres

18058

S 89°16'18" E 410.65'



Inverse With Area

Wed Jul 3 09:23:58 2024

PntNo	Bearing	Distance	Northing	Easting	Description
	S 12°02'24" W	502.48	7070.56	4923.65	
	N 73°00'43" W	21.93	6579.13	4818.84	
	S 00°01'14" W	85.81	6585.54	4797.86	
	S 80°01'13" W	289.40	6499.73	4797.83	
	N 00°01'14" E	626.20	6449.58	4512.81	
	S 89°16'18" E	410.65	7075.78	4513.04	
			7070.56	4923.65	

Closure Error Distance > 0.0000  
Total Distance Inversed > 1936.47

Area: 206859 Sq. Feet, 4.7488 Acres

N 00°01'14" E 626.20'

S 12°02'24" W 502.48'

Lot 2  
4.749 ACRES

206859 Sq. Feet  
4.7488 Acres

N 73°00'43" W 21.93'

S 00°01'14" W 85.81'

S 80°01'13" W 289.40'

18058

S 89°16'18" E 398.27'

Inverse With Area

Wed Jul 3 09:24:23 2024

PntNo	Bearing	Distance	Northing	Easting	Description
			7065.50	5694.40	
	S 12°02'24" W	614.41	6464.60	5566.23	
	N 73°00'43" W	391.99	6579.13	5191.35	
	N 12°02'24" E	502.48	7070.56	5296.16	
	S 89°16'18" E	398.27	7065.50	5694.40	

Closure Error Distance > 0.0000  
Total Distance Inversed > 1907.15

Area: 218091 Sq. Feet, 5.0067 Acres

N 12°02'24" E 502.48'

S 12°02'24" W 614.41'

218091 Sq. Feet  
5.0067 Acres

Lot 3  
5.007 ACRES

N 73°00'43" W 391.99'

18058

S 89°16'18" E 388.60'

Wed Jul 3 09:25:22 2024

Inverse With Area

PntNo	Bearing	Distance	Northing	Easting	Description
			7060.56	6433.98	
	S 12°02'24" W	625.54	6448.78	6303.50	
	N 66°21'11" W	239.12	6544.69	6084.46	
	S 63°41'21" W	182.91	6463.61	5920.50	
	N 73°00'43" W	3.39	6464.60	5917.25	
	N 12°02'24" E	614.41	7065.50	6045.41	
	S 89°16'18" E	388.60	7060.56	6433.98	

Closure Error Distance > 0.0000  
Total Distance Inversed > 2053.98

Area: 219668 Sq. Feet, 5.0429 Acres

219668 Sq. Feet  
5.0429 Acres

Lot 4  
5.043 ACRES

N 12°02'24" E 614.41'

S 12°02'24" W 625.54'

S 63°41'21" W 182.91'

N 66°21'11" W 239.12'

N 73°00'43" W 3.39'

18058

S 89°16'18" E 331.69'

Inverse With Area

Wed Jul 3 09:25:56 2024

PntNo	Bearing	Distance	Northing	Easting	Description
			7056.34	7173.98	
	S 12°02'24" W	757.41	6315.59	7015.98	
	N 66°21'11" W	332.04	6448.78	6711.82	
	N 12°02'24" E	625.54	7060.56	6842.31	
	S 89°16'18" E	331.69	7056.34	7173.98	

Closure Error Distance > 0.0000  
Total Distance Inversed > 2046.69

Area: 224904 Sq. Feet, 5.1631 Acres

N 12°02'24" E 625.54'

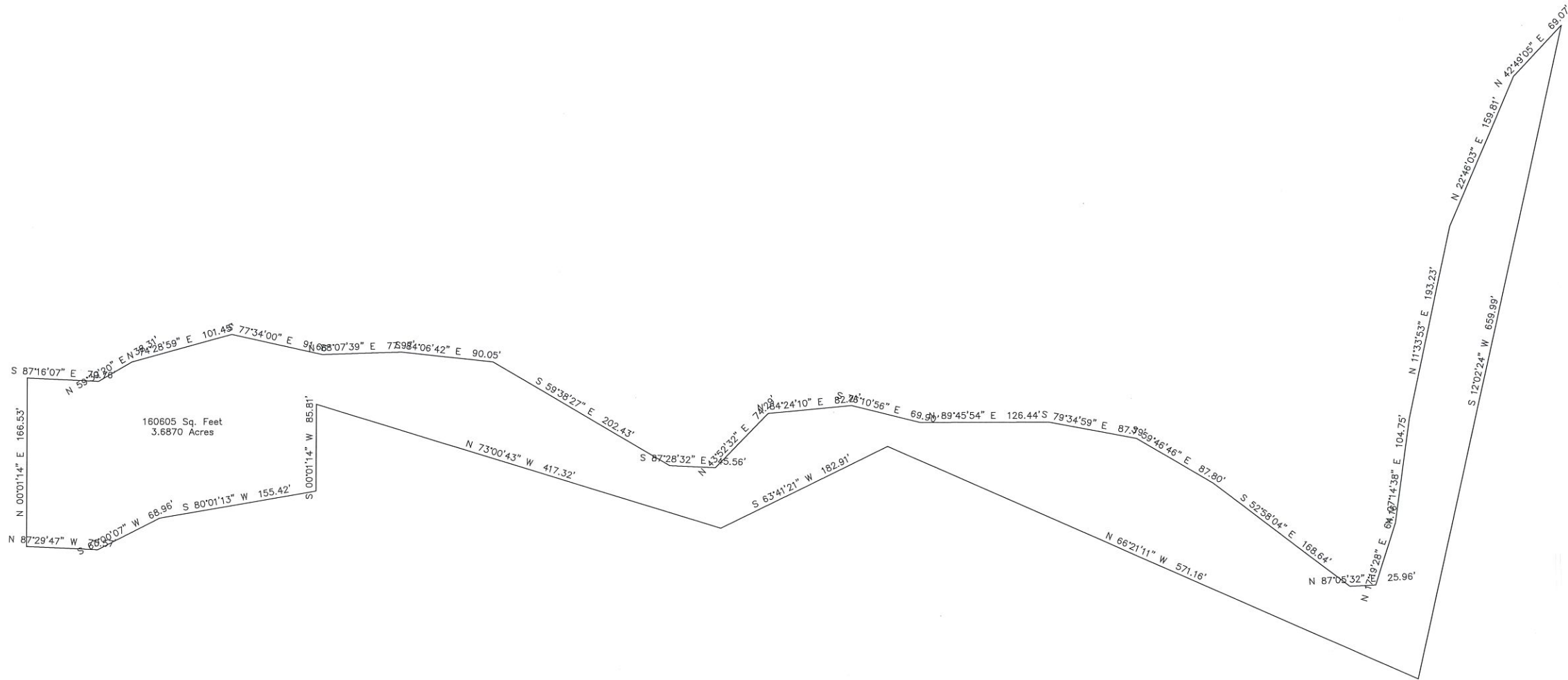
224904 Sq. Feet  
5.1631 Acres

S 12°02'24" W 757.41'

Lot 5  
5.163 ACRES

N 66°21'11" W 332.04'





Thu Aug 29 15:39:00 2024

Inverse With Area					
PntNo	Bearing	Distance	Northing	Easting	Description
			5517.00	6788.78	
	N 07°14'38" E	104.75	5620.92	6801.99	
	N 11°33'53" E	193.23	5810.23	6840.73	
	N 22°46'03" E	159.81	5957.59	6902.57	
	N 42°49'05" E	69.07	6008.25	6949.52	
	S 12°02'24" W	659.99	5362.78	6811.85	
	N 66°21'11" W	571.16	5591.87	6288.65	
	S 63°41'21" W	182.91	5510.80	6124.68	
	N 73°00'43" W	417.32	5632.73	5725.58	
	S 00°01'14" W	85.81	5546.92	5725.54	
	S 80°01'13" W	155.42	5519.98	5572.47	
	S 63°00'07" W	68.96	5488.68	5511.03	
	N 87°29'47" W	70.57	5491.76	5440.52	
	N 00°01'14" E	166.53	5658.29	5440.58	
	S 87°16'07" E	70.76	5654.92	5511.26	
	N 59°39'20" E	38.31	5674.28	5544.33	
	N 74°28'59" E	101.45	5701.42	5642.08	
	S 77°34'00" E	91.66	5681.68	5731.58	
	N 88°07'39" E	77.97	5684.23	5809.51	
	S 84°06'42" E	90.05	5674.99	5899.09	
	S 59°38'27" E	202.43	5572.68	6073.76	
	S 87°28'32" E	45.56	5570.67	6119.28	
	N 43°52'32" E	74.29	5624.23	6170.77	
	N 84°24'10" E	82.21	5632.24	6252.59	
	S 76°10'56" E	69.90	5615.55	6320.46	
	N 89°45'54" E	126.44	5616.07	6446.90	
	S 79°34'59" E	87.79	5600.19	6533.25	
	S 59°46'46" E	87.80	5556.00	6609.12	
	S 52°58'04" E	168.64	5454.43	6743.74	
	N 87°05'32" E	25.96	5455.75	6769.67	
	N 17°19'28" E	64.16	5517.00	6788.78	

Closure Error Distance > 0.0000  
 Total Distance Inversed > 4410.94  
 Area: 160605 Sq. Feet, 3.6870 Acres

New