



EL PASO COUNTY

COMMISSIONERS:
CAMI BREMER (CHAIR)
CARRIE GEITNER (VICE -CHAIR)

COLORADO

HOLLY WILLIAMS
STAN VANDERWERF
LONGINOS GONZALEZ, JR.

DEPARTMENT OF PARKS AND COMMUNITY SERVICES

October 8, 2024

Christina Prete, Project Manager
Stormwater Management Division
El Paso County Public Services Department
3275 Akers Drive
Colorado Springs, CO 80922

Subject: Jimmy Camp Creek Drainage Basin Study, 2nd Submittal - Administrative Comments (MP-23-002)

Hello Christina,

The Parks Planning Division of the Parks and Community Services Department has reviewed the Jimmy Camp Creek Drainage Basin Study and has no additional comments of behalf of El Paso County Parks. In addition to the comments beginning on Page 2, originally submitted on November 14, 2023, staff would like to take this opportunity to highlight the following excerpts from the draft Jimmy Camp Creek Drainage Basin Study, as they relate to trails and open space:

- **Section 2.5:** There are several public parks and open spaces in the Jimmy Camp Creek Drainage Basin. In the El Paso County Master Park Plan (2013) there is a proposed 21-mile primary regional trail beginning at the confluence of Jimmy Camp Creek and Fountain Creek and continuing northeast, along Jimmy Camp Creek, until reaching the City of Colorado Springs. This trail is planned to connect to the City of Fountain's Adams Open Space, proposed Corral Bluffs Open Space, and the City of Colorado Springs's proposed Jimmy Camp Creek Open Space.
- **Section 2.5:** There are multiple proposed Open Spaces that would be located fully or partially in the Jimmy Camp Creek Drainage Basin. Falcon Garrett Roads Open Space would occupy the broad northeast trending ridge that separates upper Jimmy Camp Creek from the East Fork Sand Creek in the northeast headwaters of the Drainage Basin. Corral Bluffs Open Space would be connected to the southeast of Falcon Garrett Road and would provide an opportunity for a regional trail alignment linking Fountain Creek with Colorado Spring's proposed Jimmy Camp Creek Park. The proposed Fountain and Jimmy Camp Creek Open Space would protect the floodplains of both creeks and the nearby wildlife, including the globally-vulnerable Arkansas Darters that live in the spring-fed marshes adjacent to the main creek channels (EPC, 2013).
- **Section 5.33 – Multiple Benefit Goals:** Provide open space and trail opportunities by allowing stream corridors to be used for multiple public recreation benefits.
- **Section 6.9 – Trails:** Multi-use trails can be incorporated into the drainageway design to provide multiple benefits. The trails can be used for recreational use, provide linkages to a broader regional network of trails, parks and open spaces, and provide access for channel maintenance. They should be located outside of low flow channel within the maintenance access and should be located to minimize the impact to riparian vegetation along the low flow channel that acts to stabilize the channel banks. The specific design and construction of these trails is not included in the conceptual design or in the cost estimates in this DBPS.

The layout of a trail along a drainageway should account for hydraulic considerations, utilities in the area, and access to dedicated parks and roadway crossings. The trail may need to have asphalt or concrete surfacing if water velocities during floods are expected to significant or if the trail is expected to be inundated frequently.

- Section 6.10 – Maintenance: Annual clearing of trash and debris at roadway crossings is recommended to ensure the design capacity of the crossing, and to enhance the crossings for trail users if a trail exists.

The following comments and recommendations were originally submitted on November 14, 2023:

“The Jimmy Camp Creek Drainage Basin commences in the north at its headwaters near Corral Bluffs and East Highway 24. Many tributaries feed Jimmy Camp Creek as it flows south toward its confluence with Fountain Creek in the City of Fountain. The creek and its tributaries flow primarily through open grasslands, dotted with numerous residential and industrial developments, but has been identified in the El Paso County Master Plan as an area of projected high development of a suburban residential nature.

The 2022 El Paso County Parks Master Plan shows four proposed regional trail connections and seven proposed bicycle routes located within the Jimmy Camp Creek Drainage Basin, including the following: Jimmy Camp Creek Primary Regional Trail, Highway 94 Primary Regional Trail, Crews Gulch Primary Regional Trail, South Powers Boulevard Primary Regional Trail. Of primary concern is the proposed Jimmy Camp Creek Primary Regional Trail, whose alignment runs north/south along the streambanks of southern Jimmy Camp Creek, before turning east and leaving the drainage basin. The proposed bicycle routes are located within the dedicated public rights-of-way and would be developed within their individual transportation corridor, so project impacts would be minimal.

A western branch of the Jimmy Camp Creek Trail continues alongside Jimmy Camp Creek east of the Colorado Springs Airport, following the creek north past East Highway 94 before terminating near the Corral Bluffs Open Space and Jimmy Camp Creek Park. This branch of the trail and the aforementioned park facilities are owned and managed by City of Colorado Springs Parks and Recreation Department. As such, staff recommends that the master plan be submitted to that agency for their review.

The 2022 El Paso County Parks Master Plan includes an update to the Candidate Open Space Areas, utilizing a weighted overlay of numerous natural and man-made attributes which contribute to strong candidate open space areas. A large percentage of the Jimmy Camp Creek Drainage Basin falls within the bounds of the updated Jimmy Camp and Fountain Creek Candidate Open Space Area, as well as the Corral Bluffs Candidate Open Space Area. Open space attribute values here include the Jimmy Camp Creek corridor, critical fish and bird habitat areas, surface water and wetland areas (jurisdictional and non-jurisdictional), floodplains, moderate wildlife impacts, and a variety of open high prairie grasslands. The Corral Bluffs section contains Corral Bluffs Open Space, an area of archaeological and paleontological significance, as well as stands of juniper and ponderosa pine, all located at the headwaters of the Corral and Strip Mine tributaries of Jimmy Camp Creek.

*The Draft Basin Characteristics Report includes the following references to both County and City of Colorado Springs parks, trails, and open space opportunities located within the Jimmy Camp Creek Drainage Basin (please note minor edits in **bold**):*

- *Additionally, the City of Colorado Springs is planning, as of the date of this report, on annexing and rezoning two properties in the Jimmy Camp Creek basin to parkland. The first property (Jimmy Camp Creek Annexation Filing No.1) consists of 410.3 acres located between the Blaney Rd S. and Meridian Rd. intersection and Jimmy Camp Creek in the upper watershed. The second property (Corral Bluffs Annexation Filing No. 1) consists of 920.4 acres located north of the Aztec Family Raceway in the northeast corner of the basin. These locations are shown as Open Space in the Future Land Use Map discussed below.*
- *There are several public parks and open spaces in the Jimmy Camp Creek Drainage Basin. In the El Paso County Master Park Plan (2013) there is a proposed 21-mile primary regional trail beginning at the confluence of Jimmy Camp Creek and Fountain Creek and continuing northeast, along Jimmy Camp Creek, until reaching the City of Colorado Springs. This trail connects the City of Fountain’s Adams Open Space, proposed Corral Bluffs Open Space, and the City of Colorado Springs’s proposed Jimmy Camp Creek Open Space.*



- There are multiple proposed **[Candidate]** Open Spaces **[Areas]** that would be located fully or partially in the Jimmy Camp Creek Drainage Basin. Falcon Garrett Roads Open Space would occupy the broad northeast trending ridge that separates upper Jimmy Camp Creek from the East Fork Sand Creek in the northeast headwaters of the Drainage Basin. Corral Bluffs open space would be connected to the southeast of Falcon Garrett Road and would provide an opportunity for a regional trail alignment linking Fountain Creek with Colorado Spring’s proposed Jimmy Camp Creek Park. The proposed Fountain and Jimmy Camp Creek Open Space would protect the floodplains of both creeks and the globally-vulnerable Arkansas darters that live in the spring-fed marshes adjacent to the main creek channels (EPC, 2013) **[2022]**.

Staff appreciates the inclusion and recognition of the Jimmy Camp Creek Primary Regional Trail, the vast stretches of Candidate Open Space Areas, and the City’s Corral Bluff Open Space and Jimmy Camp Creek Open Space. The proposed alternatives, which include stormwater detention, creekbank stabilization, and construction of natural stream channels, will only serve to protect the fragile Jimmy Camp Creek corridor, and therefore, allowing for more recreational opportunities in areas that would otherwise be subject to severe erosional and depositional events. Staff recommends that the applicant continue to recognize the creek channels and uplands as potential trail corridors, and further recommend that any future stream channel construction plans include locations for said trails corridors.”

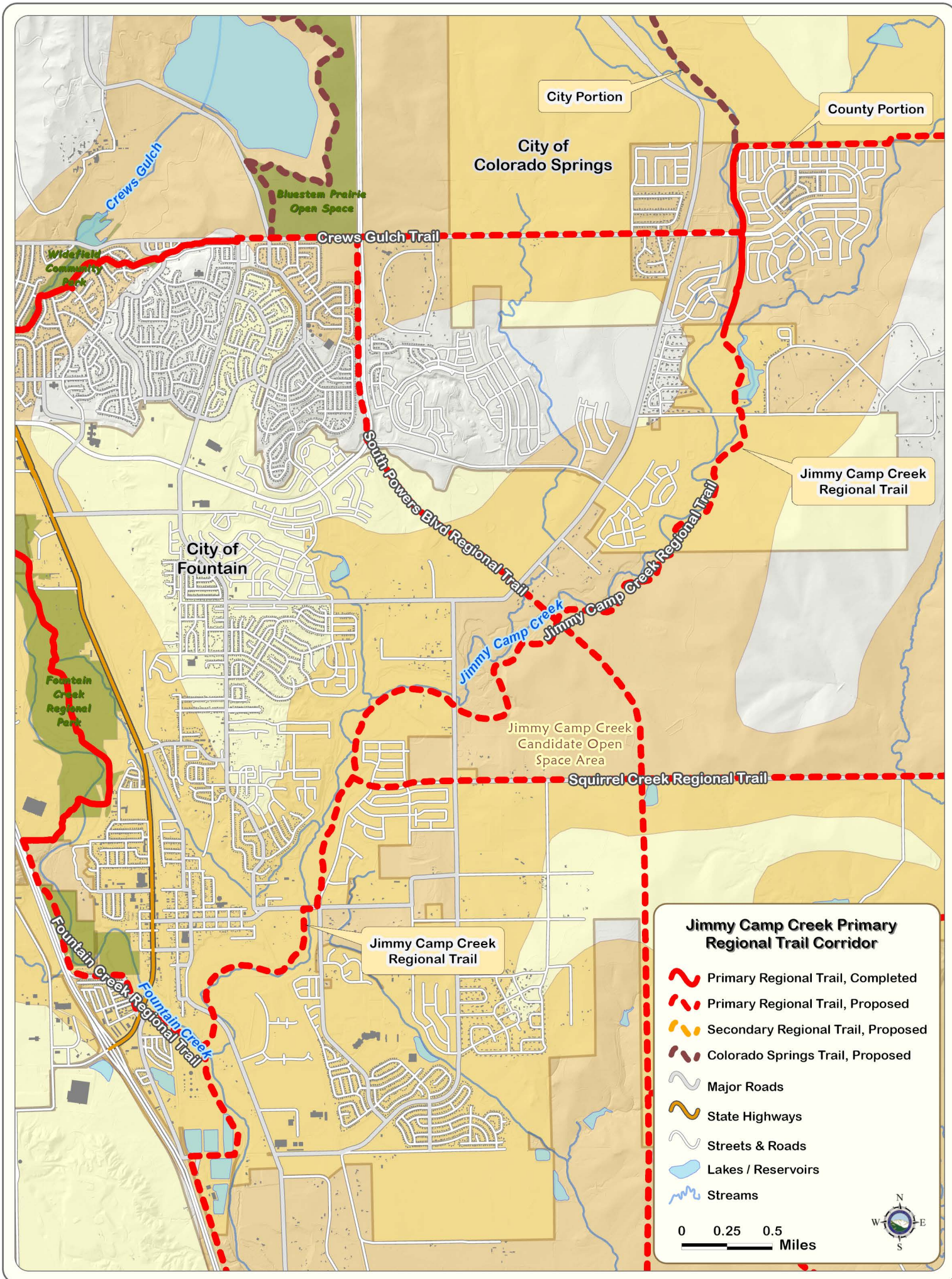
Please feel free to contact me should you have any questions or concerns.

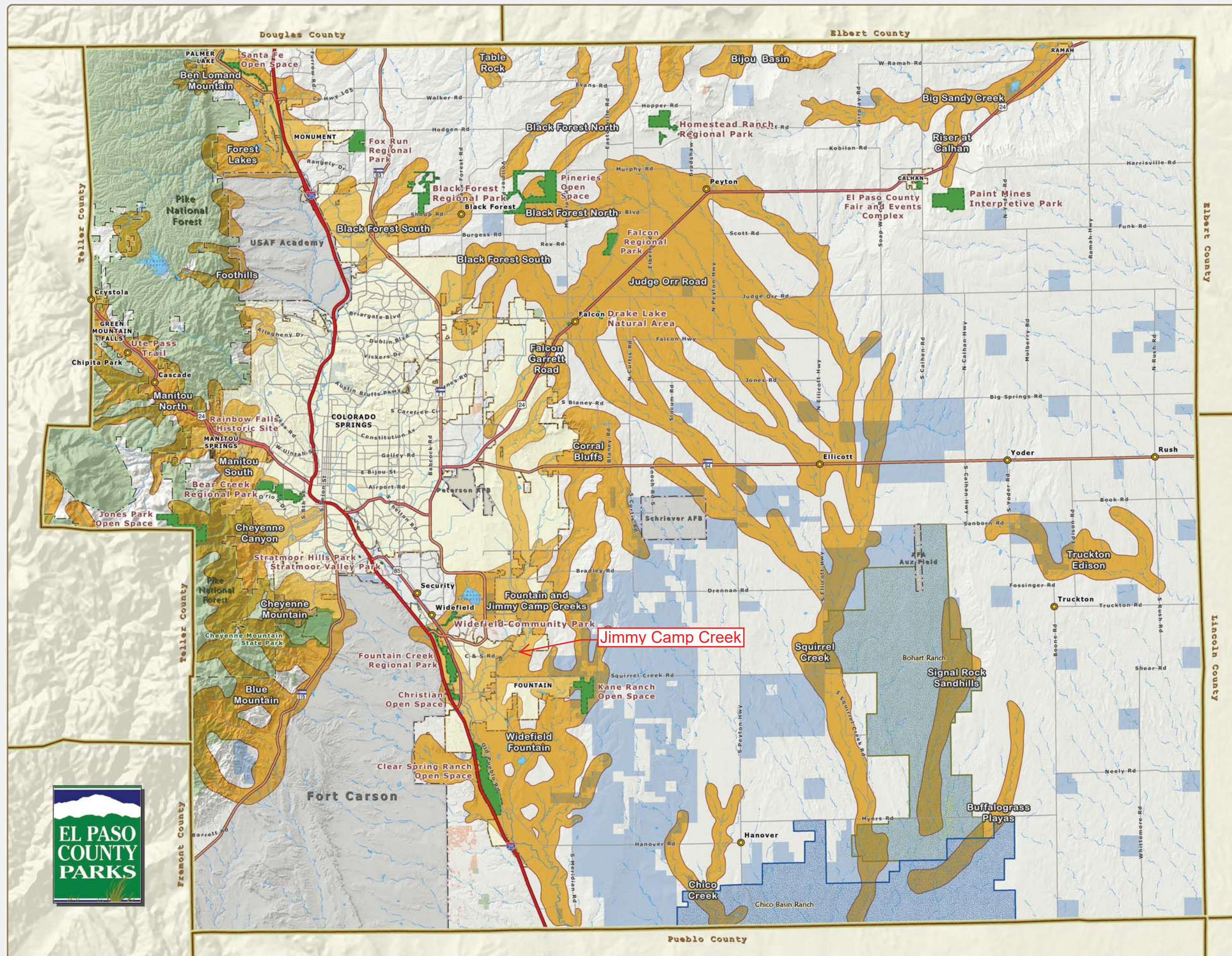
Sincerely,



Ross A. Williams
Park Planner
Parks Planning Division
Parks and Community Services Department
rosswilliams@elpasoco.com







Candidate Open Space Areas

Legend

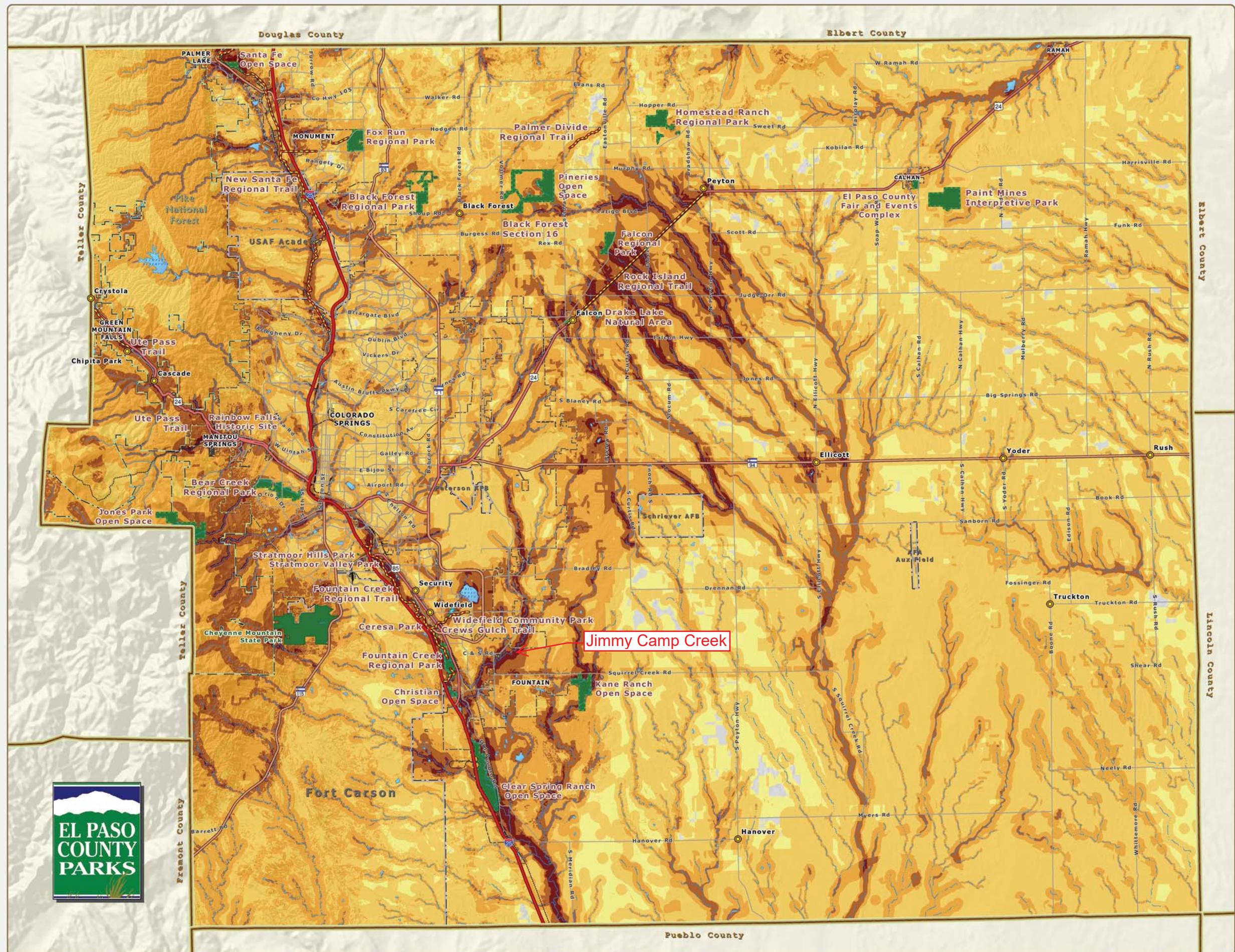
- Candidate Open Space Areas
- El Paso County Parks
- Military Areas
- County Lands
- Federal Lands
- State Lands
- Pike National Forest
- Incorporated Cities
- Nature Conservancy Lands:**
 - Bohart Ranch
 - Chico Basin Ranch
- Unincorporated Towns
- US Interstate Highways
- US Highways
- State Highways
- Major Roadways
- Railroads
- Lakes & Reservoirs
- Creeks - Perennial
- Creeks - Intermittent
- County Boundary

* Candidate Open Space Areas represent areas of medium to high open space values as calculated in the Open Space Composite Analysis.



June 2022
 COPYRIGHT 2022 by the Board of County Commissioners, El Paso County, Colorado. All rights reserved. No part of this document or data contained herein may be reproduced, used to prepare derivative products, or distributed without the specific written approval of the Board of County Commissioners, El Paso County, Colorado. This document was prepared from the best data available at the time of printing. El Paso County, Colorado, makes no claim as to the completeness or accuracy of the data contained herein.



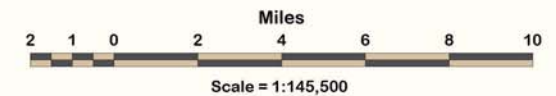


Open Space Composite Analysis

Legend

- Potential Open Space Values**
- Lower Attribute Value
 -
 -
 -
 - Higher Attribute Value
- EPC Parks
 - EPC Regional Trails
 - US Interstate Highways
 - Major Highways
 - Major Roadways
 - Railroads
 - Lakes & Reservoirs
 - Creeks - Perennial
 - Creeks - Intermittent
 - Unincorporated Towns
 - Incorporated Cities
 - Military Areas
 - Pike National Forest
 - County Boundary

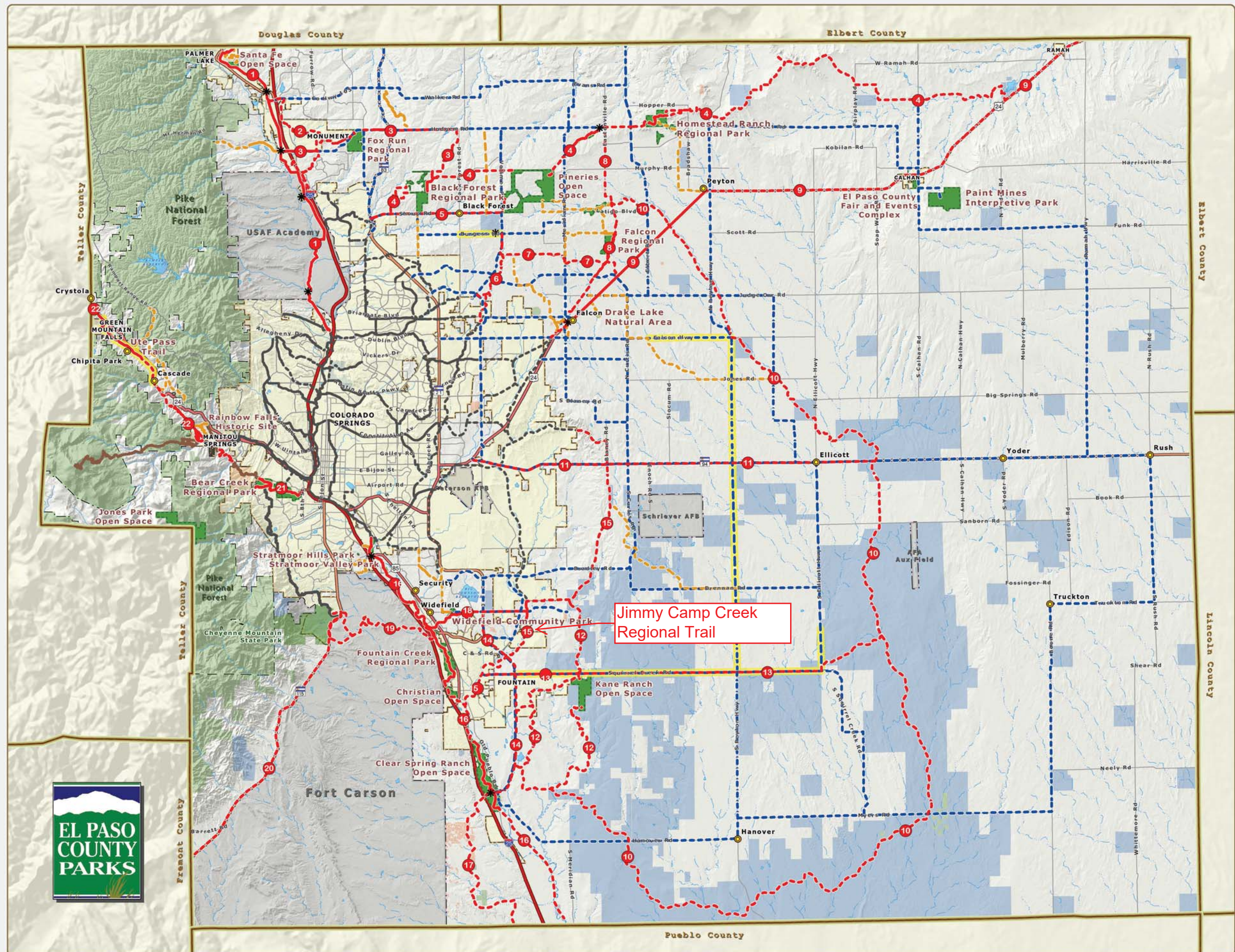
El Paso County wishes to acknowledge the assistance of Greenplay with the initial analysis that led to the development of this map.



June 2022
 COPYRIGHT 2022 by the Board of County Commissioners, El Paso County, Colorado. All rights reserved. No part of this document or data contained herein may be reproduced, used to prepare derivative products, or distributed without the specific written approval of the Board of County Commissioners, El Paso County, Colorado. This document was prepared from the best data available at the time of printing. El Paso County, Colorado, makes no claim as to the completeness or accuracy of the data contained herein.



Trails Master Plan



Legend

Existing & Proposed Regional Trails

1 New Santa Fe Trail	12 Kane Ranch Trail
2 Jackson Creek Trail	13 Squirrel Creek Trail
3 Fox Run Trail	14 South Powers Blvd Trail
4 Palmer Divide Trail	15 Jimmy Camp Creek Trail
5 Black Forest Trail	16 Fountain Creek Trail
6 Sand Creek Trail	17 Fountain Creek West Trail
7 Arroya Lane Trail	18 Crews Gulch Trail
8 Eastonville Trail	19 Chamberlain Trail
9 Rock Island Trail	20 Highway 115 Trail
10 Great Plains Trail	21 Bear Creek Trail
11 Highway 94 Trail	22 Ute Pass Trail

Completed Primary Regional Trails
 Proposed Primary Regional Trails
 Completed Secondary Regional Trails
 Proposed Secondary Regional Trails
 Proposed Bicycle Routes
 Trails By Others
 Existing City Trails
 Proposed City Trails
 2040 MTCP Multimodal Projects

Base Map Information

* EPC Trailheads	Interstate Highways
EPC Parks	Major Highways
State Land Board	State Highways
Incorporated Cities	Major Roadways
Military Areas	Railroads
Pike National Forest	Lakes & Reservoirs
County Boundary	Creeks - Perennial
Unincorporated Towns	Creeks - Intermittent

Miles
2 1 0 2 4 6 8 10
Scale = 1:145,500

June 2022
 COPYRIGHT 2022 by the Board of County Commissioners, El Paso County, Colorado. All rights reserved. No part of this document or data contained herein may be reproduced, used to prepare derivative products, or distributed without the specific written approval of the Board of County Commissioners, El Paso County, Colorado. This document was prepared from the best data available at the time of printing. El Paso County, Colorado, makes no claim as to the completeness or accuracy of the data contained herein.

