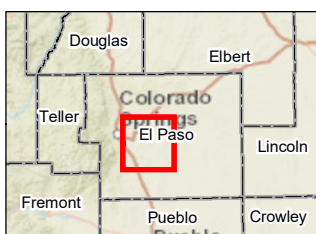
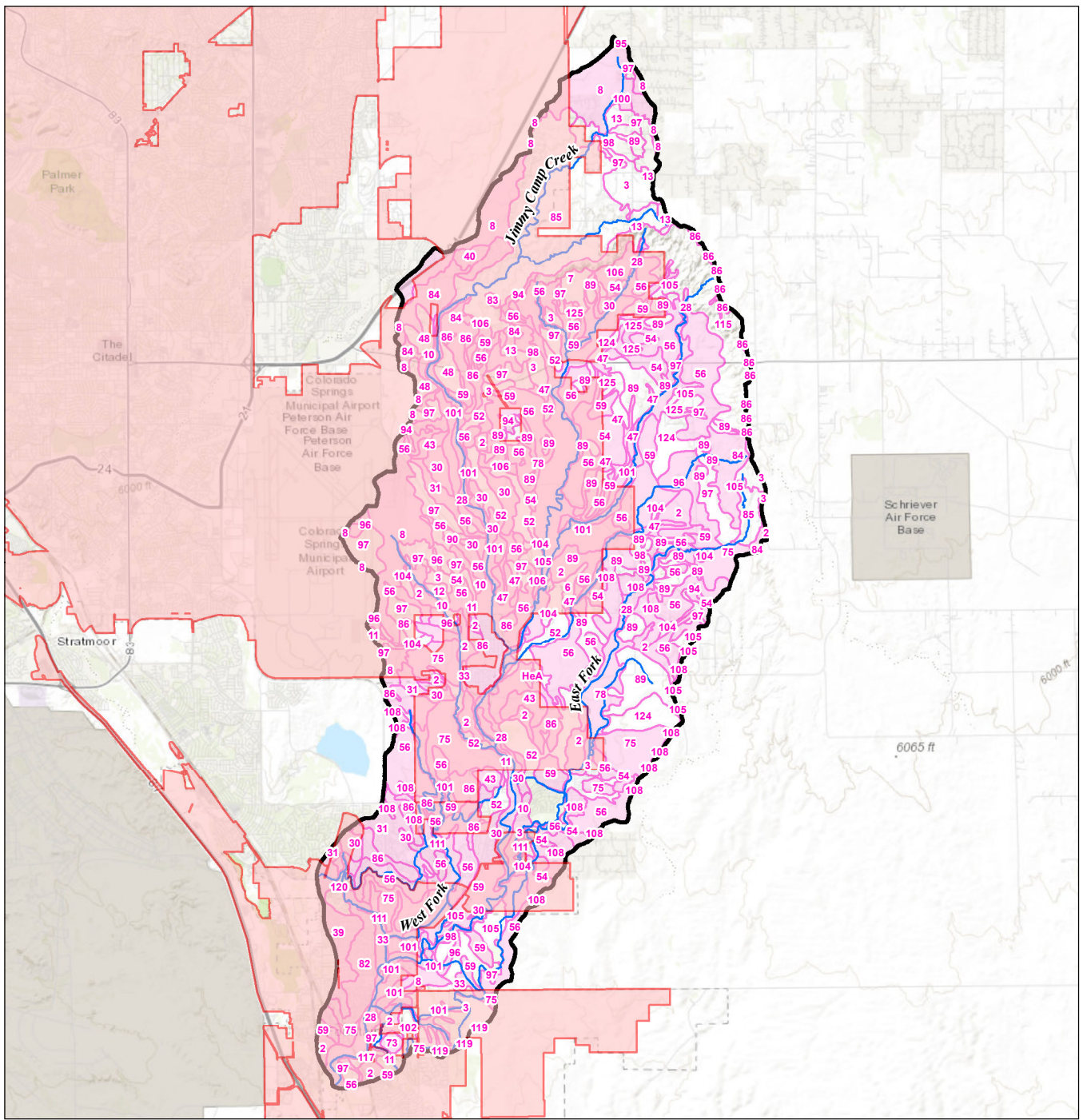
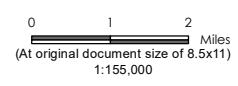


V:\2037\Active\181301205\03_data\gis_cad\gis_SandCreek_soils.mxd Revised: 2021-05-19 By: smetz



- Legend**
- Jimmy_Camp_Watershed
 - Reaches
 - NRCS Hydric Soil Rating**
 - Non-Hydric
 - Partially Hydric

*Soil Types outlined in Environmental Resources Report



Project Location

El Paso County, Colorado

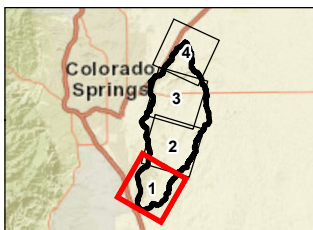
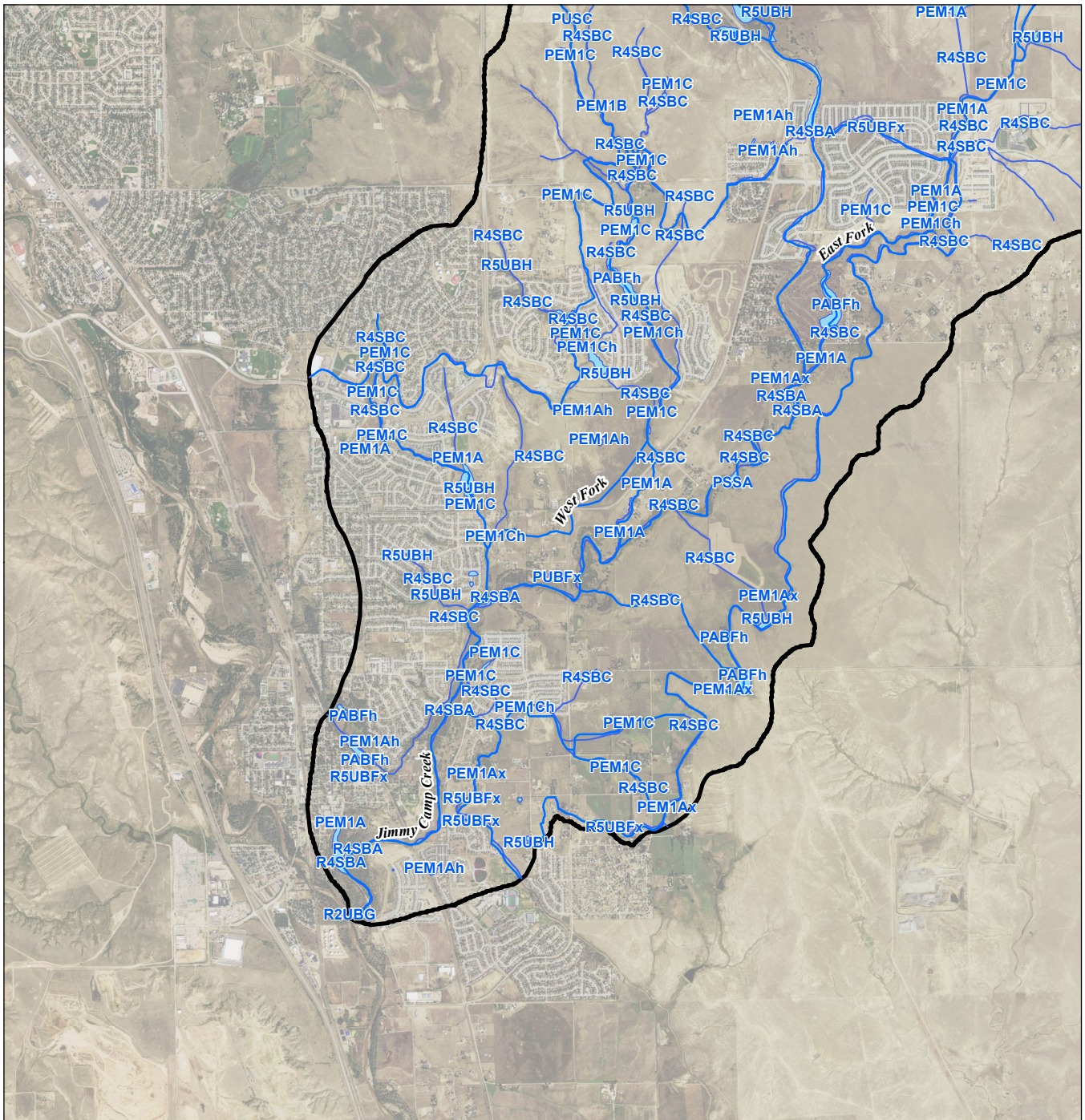
Client/Project 181301205

Project: Jimmy Camp Creek Basin

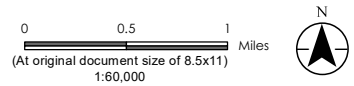
Title
NRCS Soils

- Notes**
1. Coordinate System: NAD 1983 StatePlane Colorado Central FIPS 0502 Feet
 2. Data Sources: City of Colorado Springs
 3. Background: World Topographic Map

Disclaimer: This document has been prepared based on information provided by others as cited in the Notes section. Stantec has not verified the accuracy and/or completeness of this information and shall not be responsible for any errors or omissions which may be incorporated herein as a result. Stantec assumes no responsibility for data supplied in electronic format, and the recipient accepts full responsibility for verifying the accuracy and completeness of the data.



- Legend**
- Sand Creek Basin
 - NWI Wetlands
 - Reaches



Project Location

El Paso County, Colorado

Client/Project

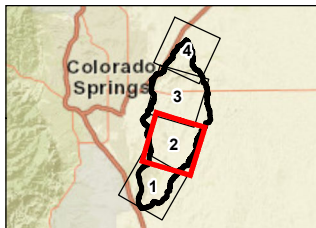
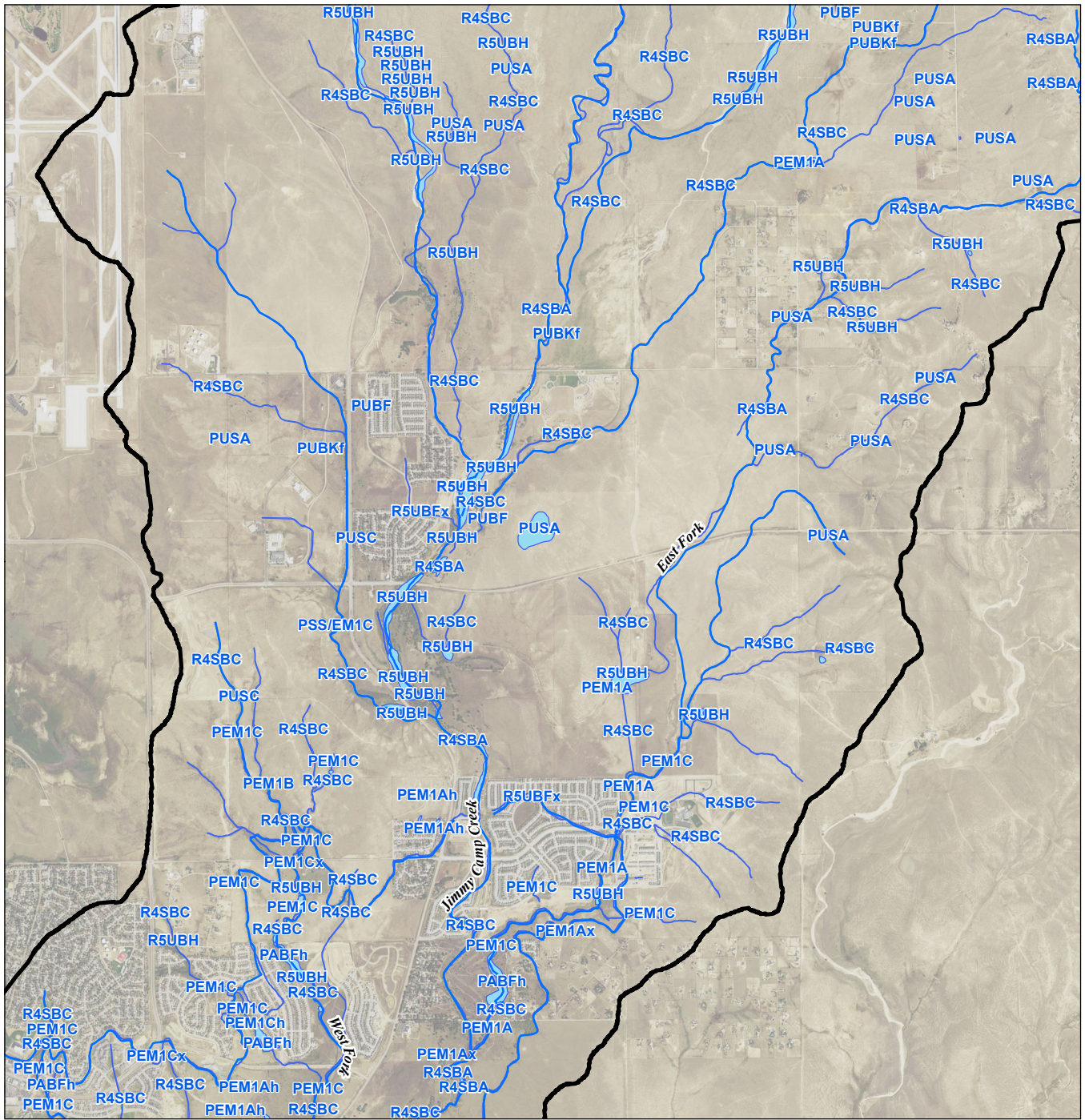
205305329

Project: Jimmy Camp Creek Basin

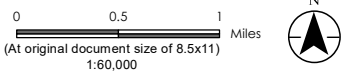
Title

NWI Wetlands

- Notes**
1. Coordinate System: NAD 1983 StatePlane Colorado Central FIPS 0502 Feet
 2. Data Sources: City of Colorado Springs
 3. Background: USA NAIP 2017



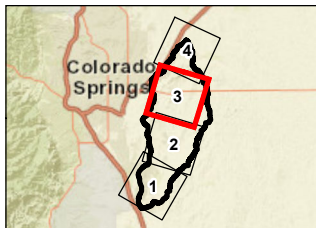
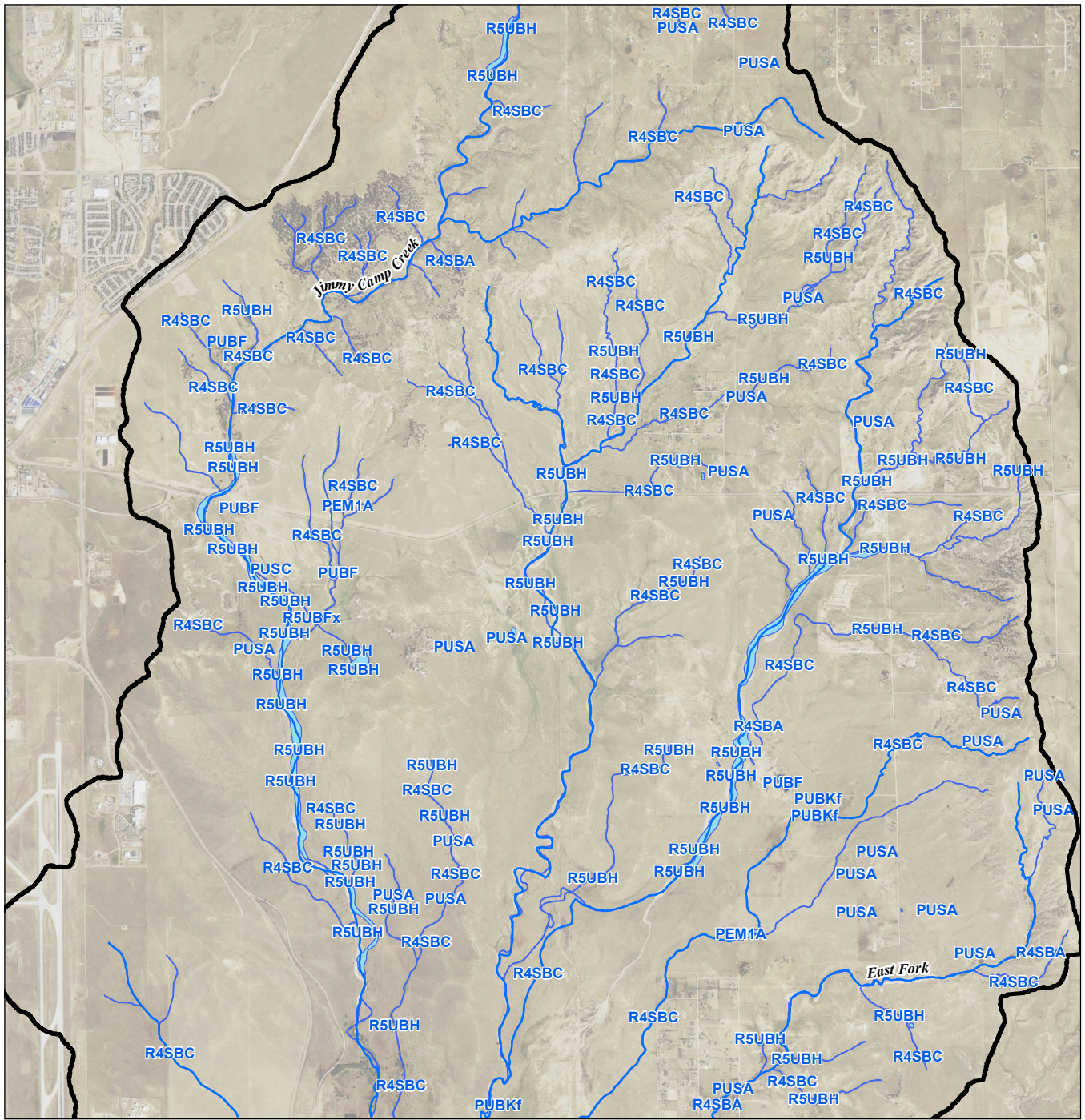
- Legend**
- Sand Creek Basin
 - NWI Wetlands
 - Reaches



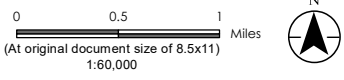
Project Location
 El Paso County, Colorado
Client/Project 205305329
 Project: Jimmy Camp Creek Basin

Title
NWI Wetlands

- Notes**
1. Coordinate System: NAD 1983 StatePlane Colorado Central FIPS 0502 Feet
 2. Data Sources: City of Colorado Springs
 3. Background: USA NAIP 2017



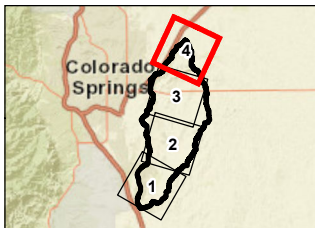
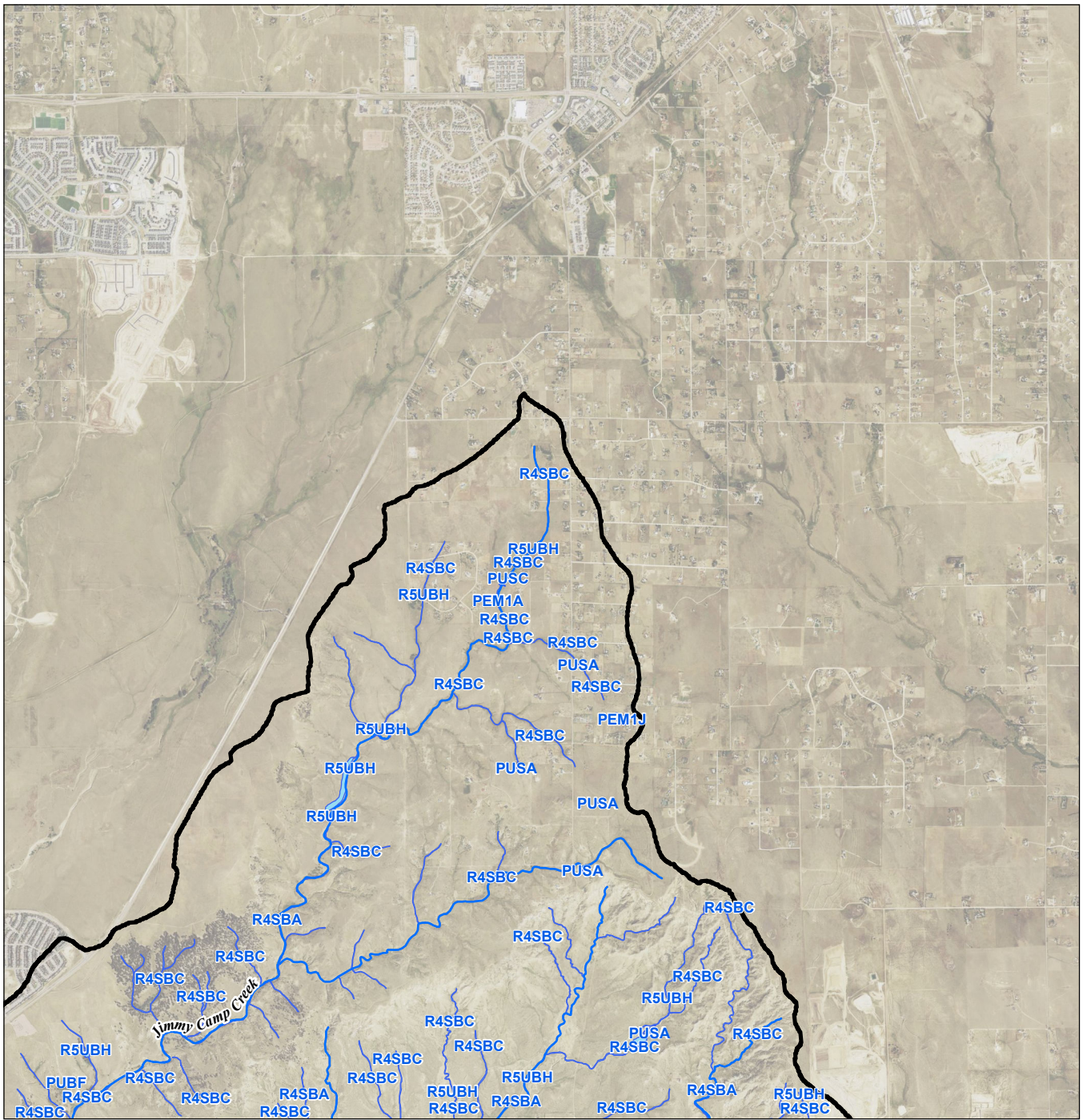
- Legend**
- Sand Creek Basin
 - NWI Wetlands
 - Reaches



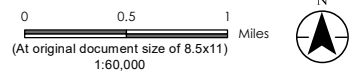
Project Location
 El Paso County, Colorado
Client/Project 205305329
 Project: Jimmy Camp Creek Basin

Title
NWI Wetlands

- Notes**
1. Coordinate System: NAD 1983 StatePlane Colorado Central FIPS 0502 Feet
 2. Data Sources: City of Colorado Springs
 3. Background: USA NAIP 2017



- Legend**
- Sand Creek Basin
 - NWI Wetlands
 - Reaches



Project Location

El Paso County, Colorado

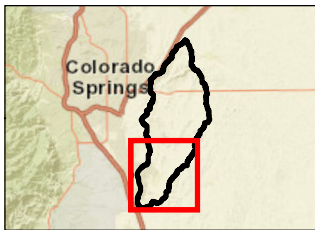
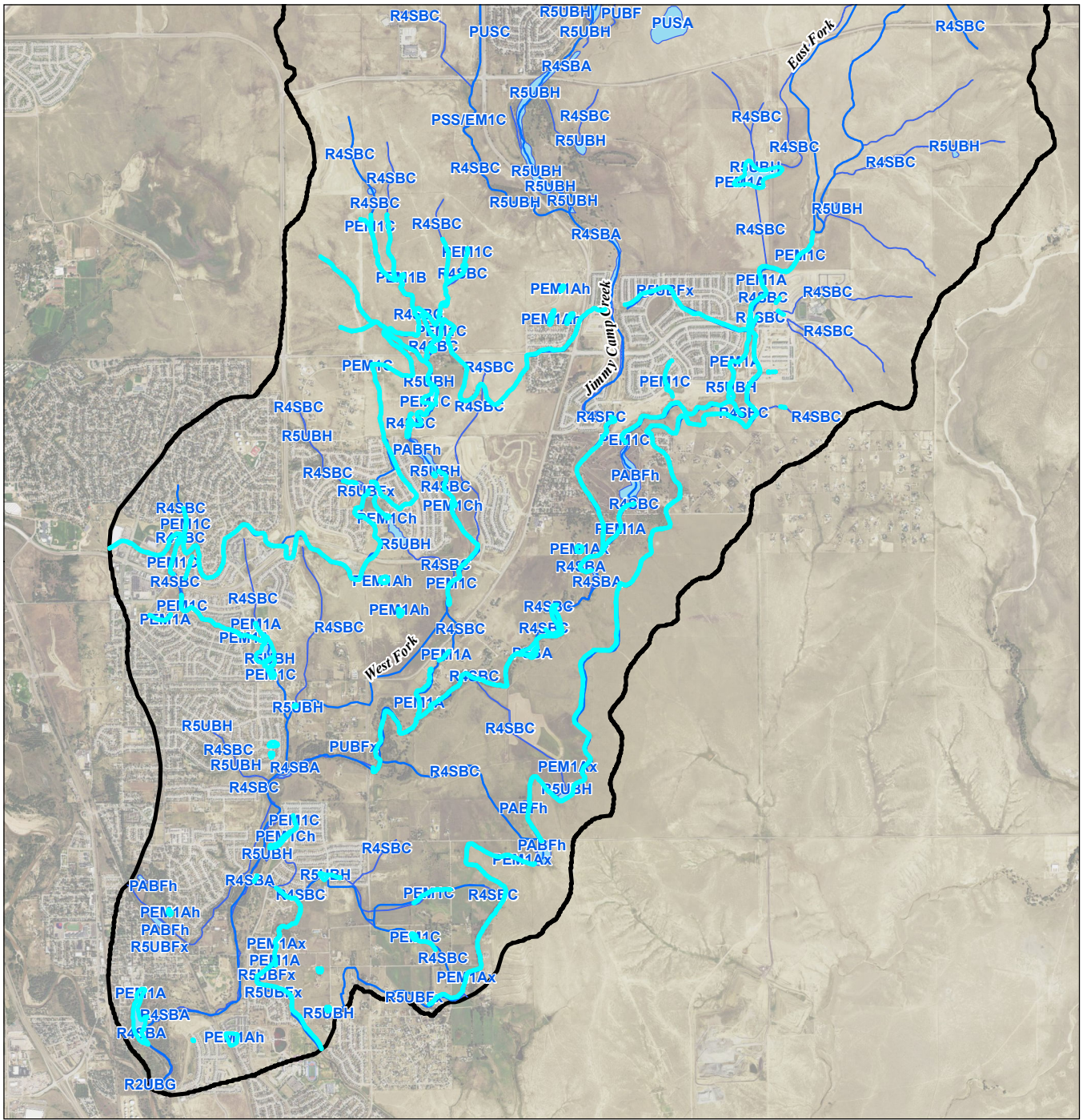
Client/Project 205305329

Project: Jimmy Camp Creek Basin

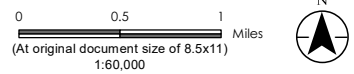
Title

NWI Wetlands

- Notes**
1. Coordinate System: NAD 1983 StatePlane Colorado Central FIPS 0502 Feet
 2. Data Sources: City of Colorado Springs
 3. Background: USA NAIP 2017



- Legend**
- Sand Creek Basin
 - NWI Wetlands
 - Reaches



Project Location

El Paso County, Colorado

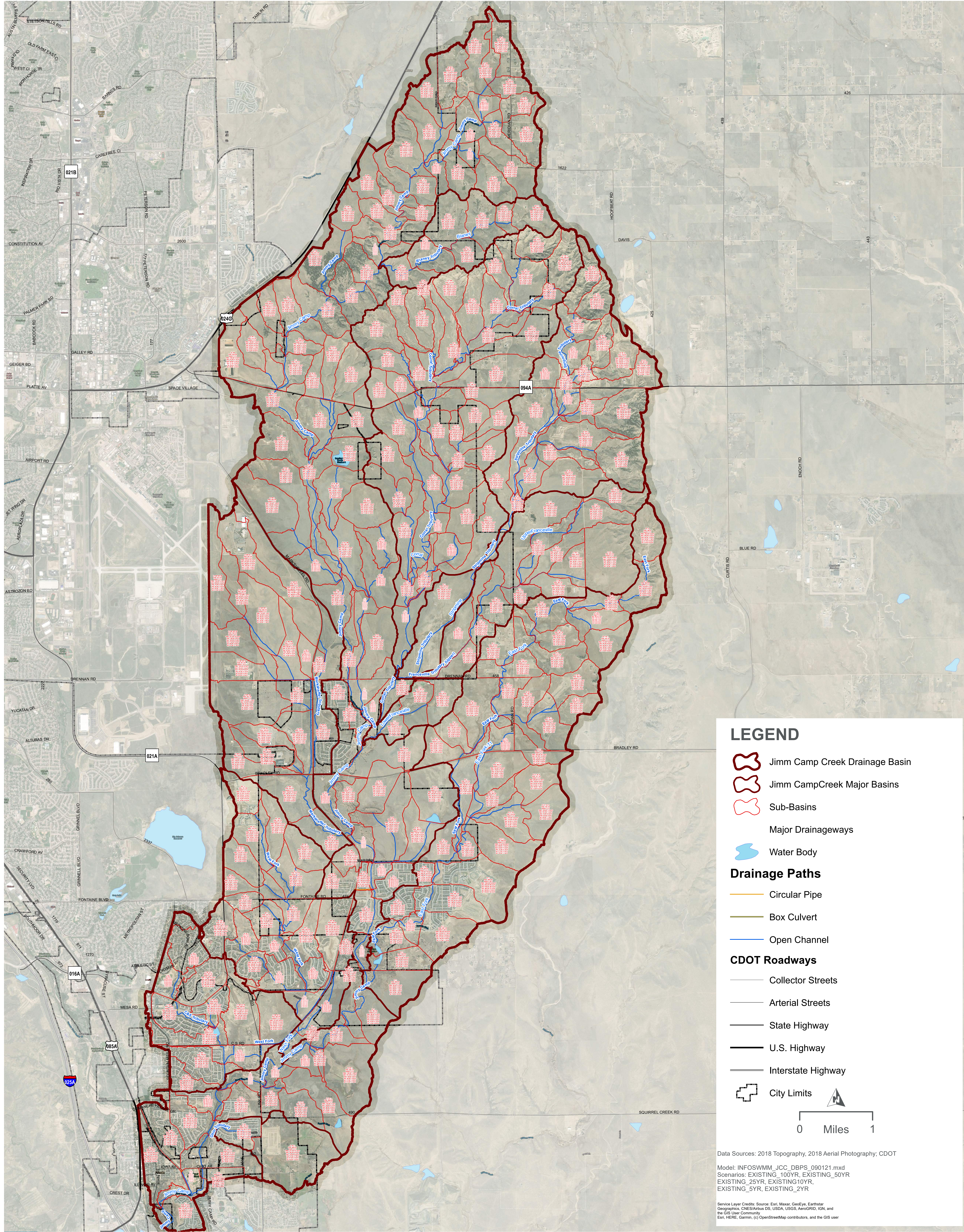
Client/Project 205305329

Project: Jimmy Camp Creek Basin

Title

NWI Wetlands

- Notes**
1. Coordinate System: NAD 1983 StatePlane Colorado Central FIPS 0502 Feet
 2. Data Sources: City of Colorado Springs
 3. Background: USA NAIP 2017



LEGEND

- Jimm Camp Creek Drainage Basin
- Jimm Camp Creek Major Basins
- Sub-Basins
- Major Drainageways
- Water Body
- Drainage Paths**
 - Circular Pipe
 - Box Culvert
 - Open Channel
- CDOT Roadways**
 - Collector Streets
 - Arterial Streets
 - State Highway
 - U.S. Highway
 - Interstate Highway
- City Limits

0 Miles 1

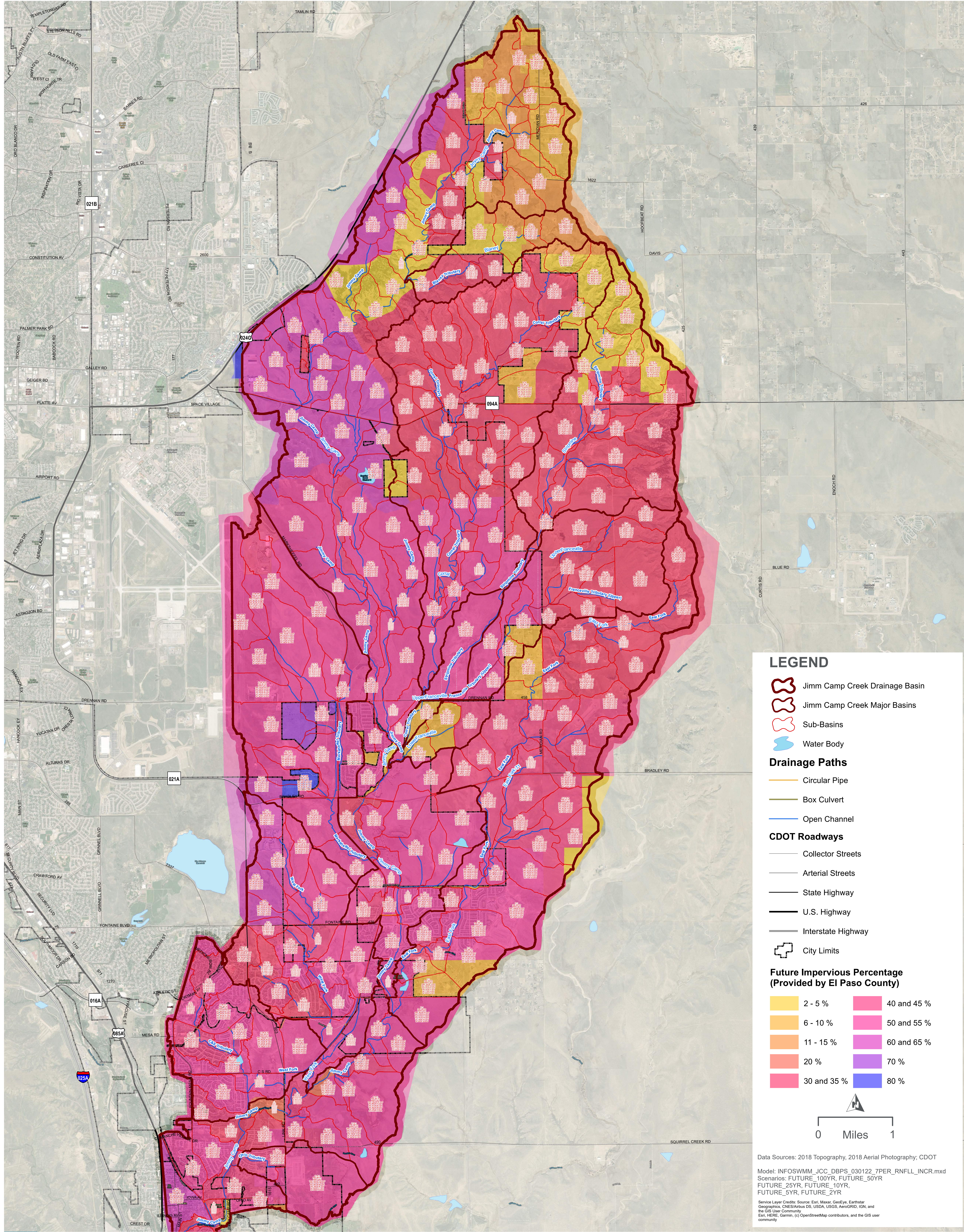
Data Sources: 2018 Topography, 2018 Aerial Photography, CDOT

Model: INFOSWMM_JCC_DBPS_090121.mxd
 Scenarios: EXISTING_100YR, EXISTING_50YR
 EXISTING_25YR, EXISTING10YR,
 EXISTING_5YR, EXISTING_2YR

Service Layer Credits: Source: Esri, Maxar, GeoEye, Earthstar
 Geographics, CNES/Airbus DS, USDA, USGS, AeroGRID, IGN, and
 the GIS User Community
 Esri, HERE, Garmin, (c) OpenStreetMap contributors, and the GIS user



EL PASO COUNTY: JIMMY CAMP CREEK DBPS
EXISTING CONDITION SUB-BASIN MODEL RESULTS:
PEAK RUNOFF FLOW (CFS) AND TOTAL RUNOFF VOLUME (AC-FY)



LEGEND

- Jimm Camp Creek Drainage Basin
- Jimm Camp Creek Major Basins
- Sub-Basins
- Water Body

Drainage Paths

- Circular Pipe
- Box Culvert
- Open Channel

CDOT Roadways

- Collector Streets
- Arterial Streets
- State Highway
- U.S. Highway
- Interstate Highway
- City Limits

Future Impervious Percentage (Provided by El Paso County)

2 - 5 %	40 and 45 %
6 - 10 %	50 and 55 %
11 - 15 %	60 and 65 %
20 %	70 %
30 and 35 %	80 %

0 Miles 1

Data Sources: 2018 Topography, 2018 Aerial Photography, CDOT
 Model: INFOSWMM_JCC_DBPS_D30122_7PER_RNLL_INCR.mxd
 Scenarios: FUTURE_100YR, FUTURE_50YR, FUTURE_25YR, FUTURE_10YR, FUTURE_5YR, FUTURE_2YR
 Service Layer Credits: Source: Esri, Maxar, GeoEye, Earthstar Geographics, CNES/Airbus DS, USDA, USGS, AeroGRID, IGN, and the GIS User Community
 Esri, HERE, Garmin, (c) OpenStreetMap contributors, and the GIS user community