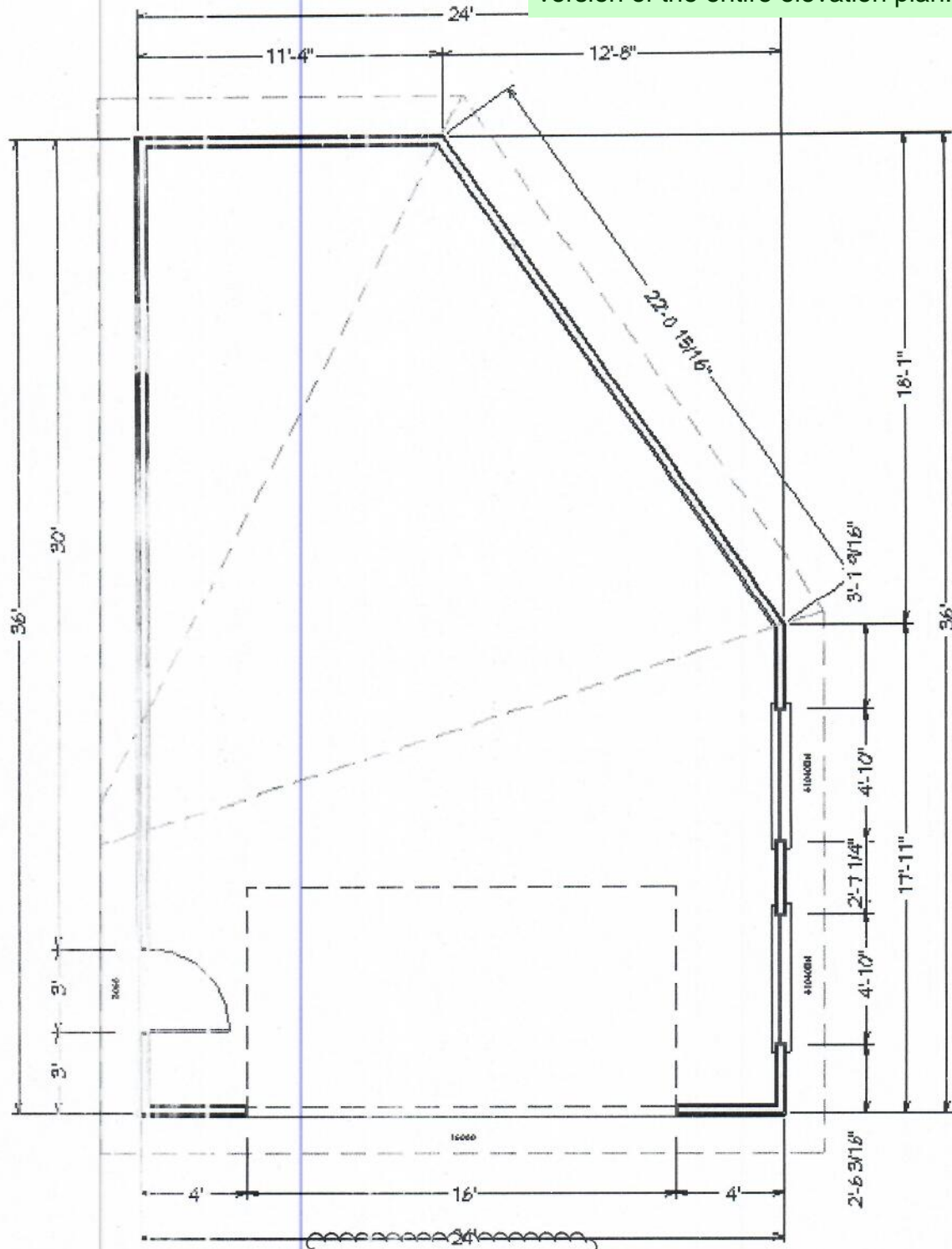


You need to resubmit the entire elevation document. This is just the single edited page. Additionally, we cannot accept drawings with information crossed out. Please resubmit a clean version of the entire elevation plan.



~~749~~  
749 sq ft

749 SF

**Floor Plan**  
Garage  
(non-living space)

Is this intended for living space or as a garage? Please clarify and discuss with Crystal Park HOA if this is proposed to be used for living area.