



**LEGEND**

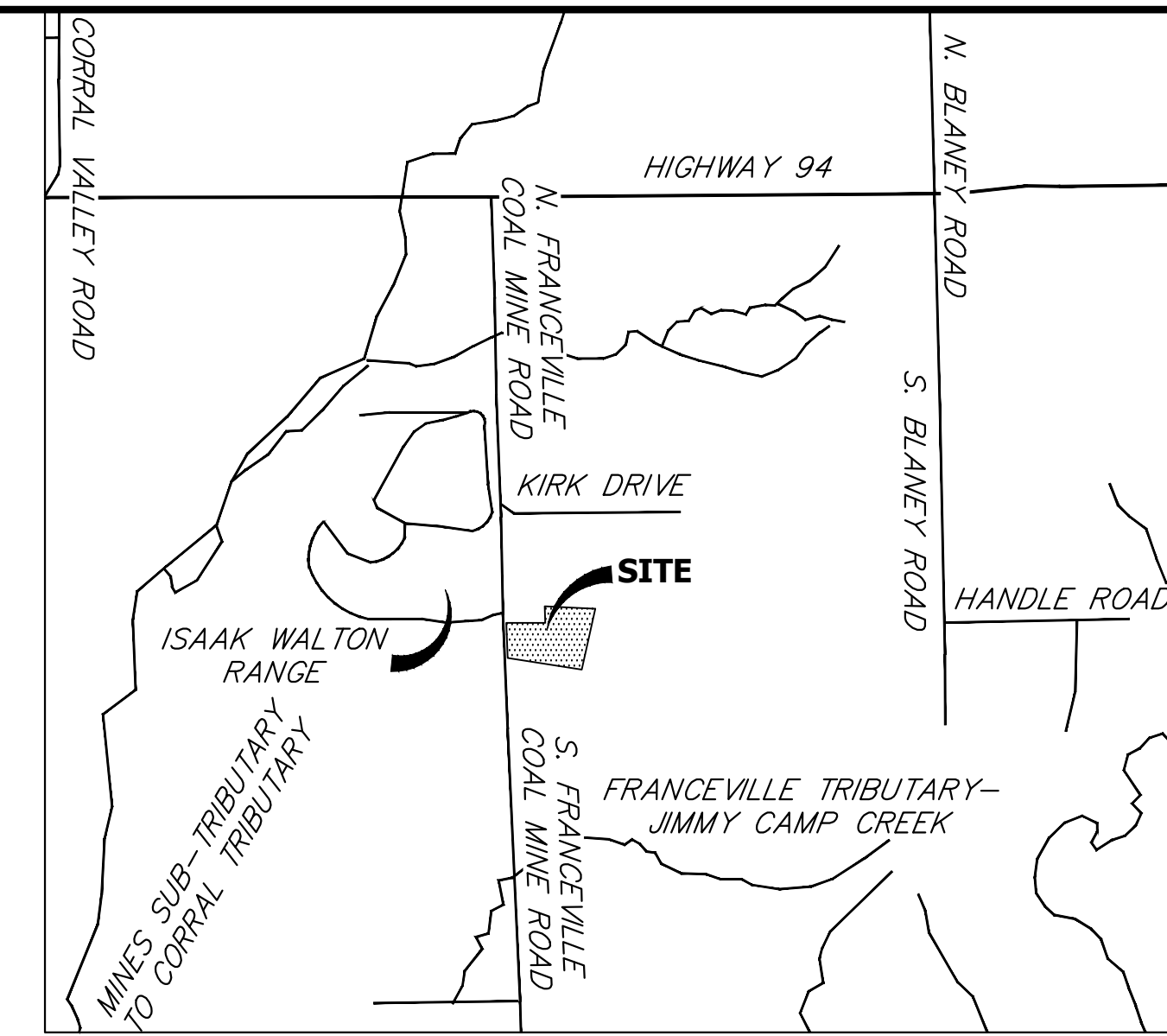
- PINYON PINE
- ONE-SEED JUNIPER
- RUSSIAN SAGE
- THREE LEAF SUMAC
- SEEDING

**LANDSCAPE TABLE**

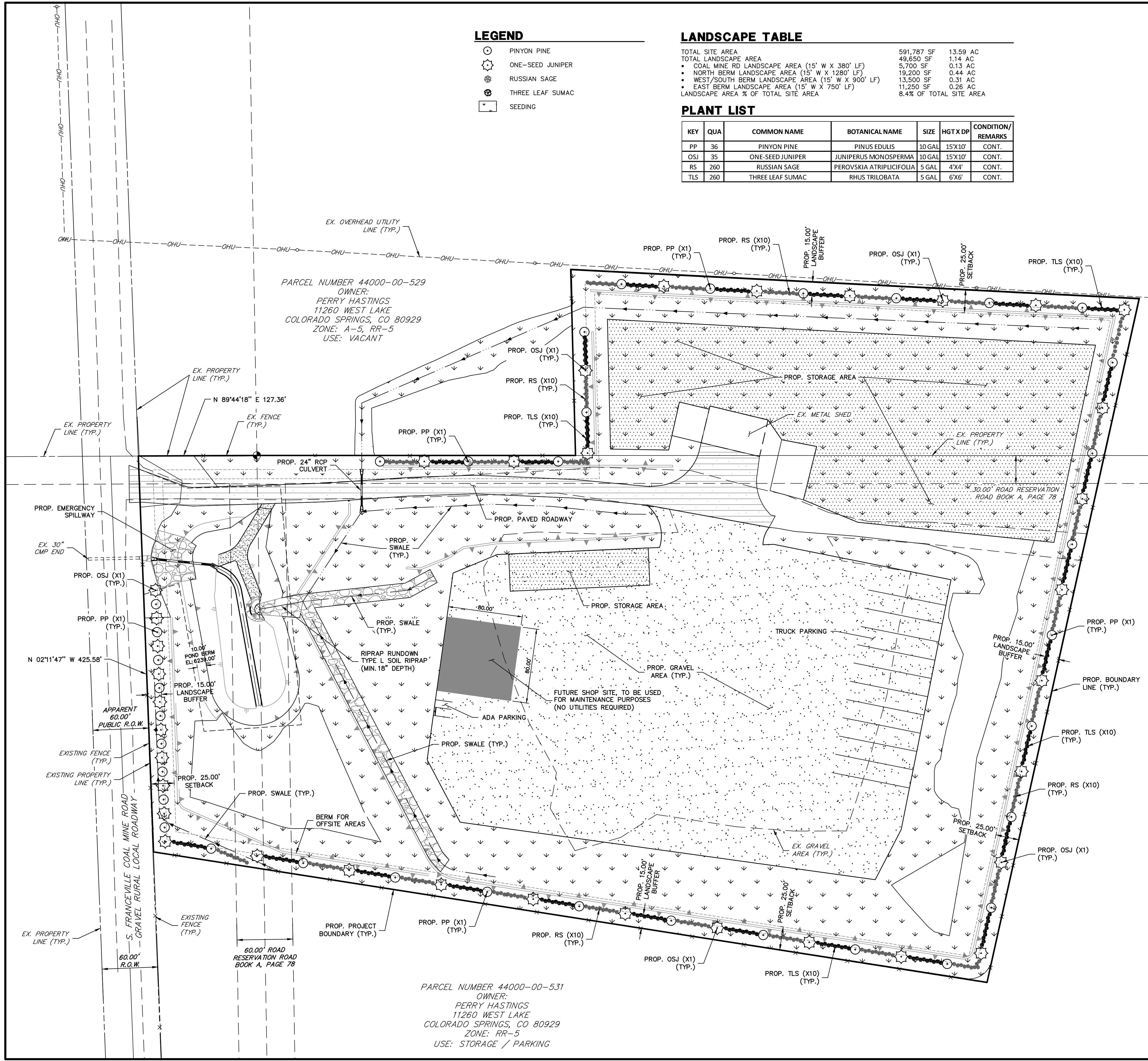
TOTAL SITE AREA	591,787 SF	13.59 AC
TOTAL LANDSCAPE AREA	49,650 SF	1.14 AC
• COAL MINE RD LANDSCAPE AREA (15' W X 380' LF)	5,700 SF	0.13 AC
• NORTH BERM LANDSCAPE AREA (15' W X 1280' LF)	19,200 SF	0.44 AC
• WEST/SOUTH BERM LANDSCAPE AREA (15' W X 900' LF)	13,500 SF	0.31 AC
• EAST BERM LANDSCAPE AREA (15' W X 750' LF)	11,250 SF	0.26 AC
LANDSCAPE AREA % OF TOTAL SITE AREA		8.4% OF TOTAL SITE AREA

**PLANT LIST**

KEY	QUA	COMMON NAME	BOTANICAL NAME	SIZE	HGT X DP	CONDITION/REMARKS
PP	36	PINYON PINE	PINUS EDULIS	10 GAL	15'X10'	CONT.
OSJ	35	ONE-SEED JUNIPER	JUNIPERUS MONOSPERMA	10 GAL	15'X10'	CONT.
RS	260	RUSSIAN SAGE	PEROVSKIA ATRIPLICIFOLIA	5 GAL	4'X4'	CONT.
TLS	260	THREE LEAF SUMAC	RHUS TRILOBATA	5 GAL	6'X6'	CONT.



**VICINITY MAP**  
SCALE: 1" = 2000'



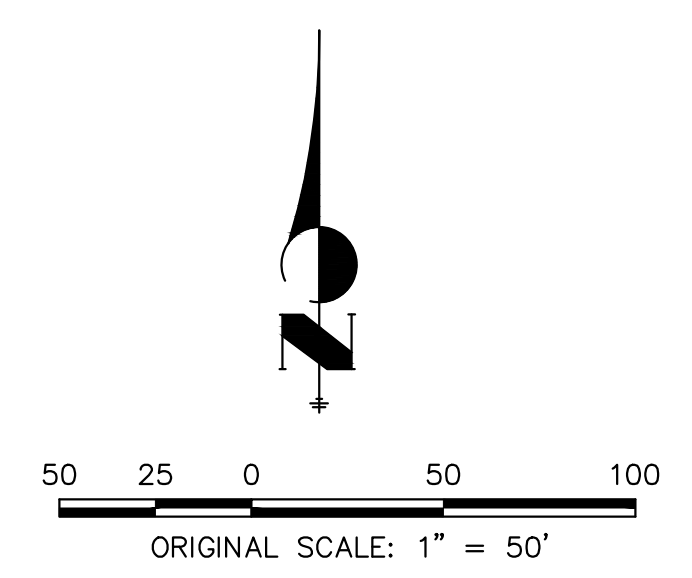
**SEEDING MIX**

ALL AREAS DISTURBED OR CONSTRUCTED SHALL BE SEEDDED WITH THE FOLLOWING SEED MIX:

- A. "NATIVE" SEED MIX:  
PER-ACRE SEEDING RATES ARE BASED ON 144 PURE LIVE SEEDS (PLS) PER SQUARE FOOT, WHICH IS EQUIVALENT TO ONE (1) PURE LIVE SEED PER SQUARE INCH.
- B. WHEATGRASS MIX: THIS IS A TALLER, ALL NATIVE, ALL COOL SEASON, UPLAND MIX IS BEST LEFT UN-MOWED AFTER ESTABLISHMENT.
  - 40% WESTERN WHEATGRASS (PASCOPYRUM SMITHII) 32 LBS./ACRE
  - 40% STREAMBANK WHEATGRASS (ELYMUS LANCEOLATUS) 18 LBS./ACRE
  - 20% SLENDER WHEATGRASS (ELYMUS TRACHYCAULUS) 10 LBS./ACRE
  - 60 LBS./ACRE TOTAL DRILL SEEDDED

**SEEDING SPECIFICATIONS**

- A. SEEDBED PREPARATION:  
THE SEEDBED SHALL BE FREE OF DEBRIS INCLUDING WEEDS, PLANT MATTER, ROCKS, CLODS, AND OTHER IMPERVIOUS MATERIAL OVER ONE (1) INCH IN DIAMETER. SEEDBED SHALL BE SMOOTH AND FREE OF LARGE CLUMPS, FLUFFY YET FIRM, MOIST BUT NOT WET.
- B. SEEDING:  
1. SEEDING SHALL BE DONE IMMEDIATELY AFTER SOIL PREPARATION OPERATIONS TO DISCOURAGE WEED COMPETITION. SEED SHALL BE EVENLY DISTRIBUTED OVER GROUND ON A STILL DAY INTO A SLIGHTLY MOIST SEEDBED, USING AN APPROVED GRASS DRILL FOLLOWED BY PACKER WHEELS. HAND-BROADCASTING METHODS SHALL BE AT DOUBLE THE SEEDING RATE AND SHALL BE "RAKED IN" OR OTHERWISE COVERED WITH SOIL TO A DEPTH OF 1/4 INCH. HYDRAULIC SEEDING CAN BE USED IN AREAS NOT ACCESSIBLE FOR MACHINE METHODS; SEED AND MULCH SHALL NOT BE APPLIED IN THE SAME OPERATION.  
2. SEEDING OF "NATIVE" GRASSES CAN TAKE PLACE AT ANY TIME DURING THE GROWING SEASON. FOR BEST AND QUICKEST RESULTS, WARM SEASON GRASSES SHOULD BE SEEDDED IN MAY AND NO LATER THAN JULY. COOL SEASON "NATIVE" GRASSES ARE BEST SEEDDED IN THE SPRING. GENERALLY, DORMANT SEEDING OF COOL SEASON NON-IRRIGATED GRASS SHALL OCCUR BETWEEN NOVEMBER 15TH AND APRIL 15TH ON UNFROZEN GROUND. SEEDING OF NON-IRRIGATED WARM SEASON GRASSES SHALL OCCUR BETWEEN MARCH 15TH AND JUNE 15TH.  
3. ALL SEEDDED AREAS SHALL BE MULCHED WITH 100% BIODEGRADABLE STRAW MULCH WITHIN 12 HOURS OF SEEDING, IN THE ABSENCE OF NATURAL PRECIPITATION.  
4. ESTABLISHMENT TIME AND ACCEPTANCE FOR BOTH NATIVE AND NATURALIZED GRASS SEED SPECIES, GERMINATION SHOULD START WITHIN THREE (3) TO SIX (6) WEEKS. DEPENDING ON PLANTING TIME, AVAILABLE MOISTURE AND SUCCESS OF WEED CONTROL, FULL ESTABLISHMENT AND INITIAL ACCEPTANCE OF SEED CAN TAKE A MINIMUM OF ONE (1) FULL GROWING SEASON, BUT USUALLY TAKES LONGER. FULL ESTABLISHMENT OF NON-IRRIGATED SEED CAN TAKE THREE (3) TO FIVE (5) YEARS OR MORE. HIGHER SEED RATES, SHALLOW DRILLING OF NO GREATER THAN 1/2", AND NARROW (2-4") SEEDER ROW SPACING HAVE PROVEN TO BE CRITICAL IN OBTAINING RAPID ESTABLISHMENT.



UNTIL SUCH TIME AS THESE DRAWINGS ARE APPROVED BY THE APPROPRIATE REVIEWING AGENCIES, OR ENGINEERING APPROVES THEIR USE, THESE DRAWINGS ARE DESIGNATED BY WRITTEN AUTHORIZATION.  
PREPARED FOR  
**GATEWAY TRUCKING, LLC**  
235 S. FRANCEVILLE COAL MINE RD  
COLORADO SPRINGS, CO 80929  
ATTN: PERRY HASTINGS  
602-558-0846  
HASTINGSCONTRACTINGCO@GMAIL.COM

**J.R. ENGINEERING**  
A Westman Company  
Central 303-740-8888 • Colorado Springs 719-588-2583  
Fort Collins 970-491-9888 • www.jrengineering.com

BY	DATE	NO.	REVISION

H-SCALE	V-SCALE	DATE	DESIGNED BY	DRAWN BY	CHECKED BY
1"=50'	N/A	05/15/26	GAG	GAG	

**GATEWAY TRUCKING SITE DEVELOPMENT PLAN LANDSCAPE PLAN**

SHEET 1 OF 1  
JOB NO. 25215.00

C:\Users\CSID\OneDrive\Engineering\2521500\Project Files\Drawings\Sheet Dwg\2521500\_Landscape\_Plan.dwg Landscape Plan 5/15/2026 7:29:05 AM, CS